



**Transmission of material in this release is embargoed until  
 8:30 a.m. (ET) February 10, 2021**

USDL-21-0226

Technical information: (202) 691-7000 • [cpi\\_info@bls.gov](mailto:cpi_info@bls.gov) • [www.bls.gov/cpi](http://www.bls.gov/cpi)  
 Media Contact: (202) 691-5902 • [PressOffice@bls.gov](mailto:PressOffice@bls.gov)

**CONSUMER PRICE INDEX – JANUARY 2021**

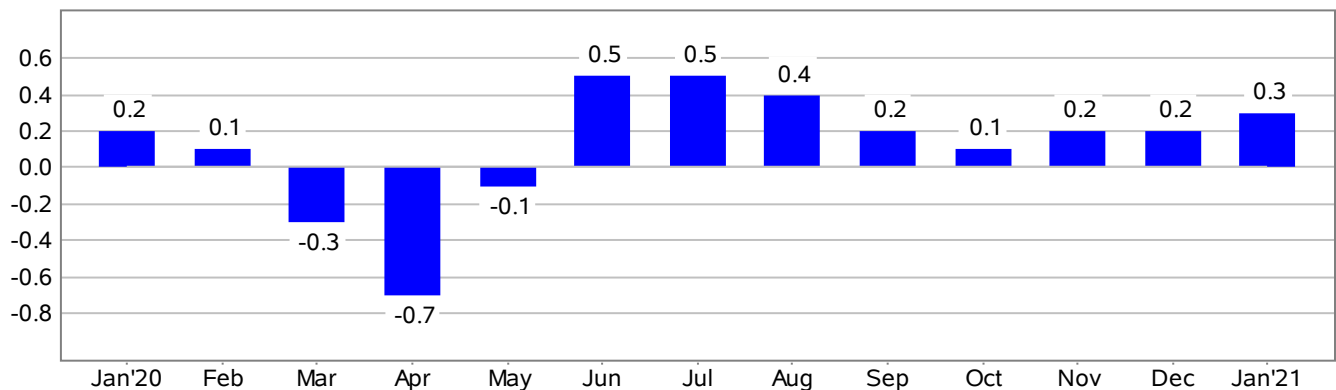
The Consumer Price Index for All Urban Consumers (CPI-U) increased 0.3 percent in January on a seasonally adjusted basis, the U.S. Bureau of Labor Statistics reported today. Over the last 12 months, the all items index increased 1.4 percent before seasonal adjustment.

The gasoline index continued to increase, rising 7.4 percent in January and accounting for most of the seasonally adjusted increase in the all items index. Although the indexes for electricity and natural gas declined, the energy index rose 3.5 percent over the month. The food index rose slightly in January, increasing 0.1 percent as an advance in the index for food away from home more than offset a decline in the index for food at home.

The index for all items less food and energy was unchanged in January. The indexes for apparel, medical care, shelter, and motor vehicle insurance all increased over the month. The indexes for recreation, used cars and trucks, airline fares, and new vehicles all declined in January.

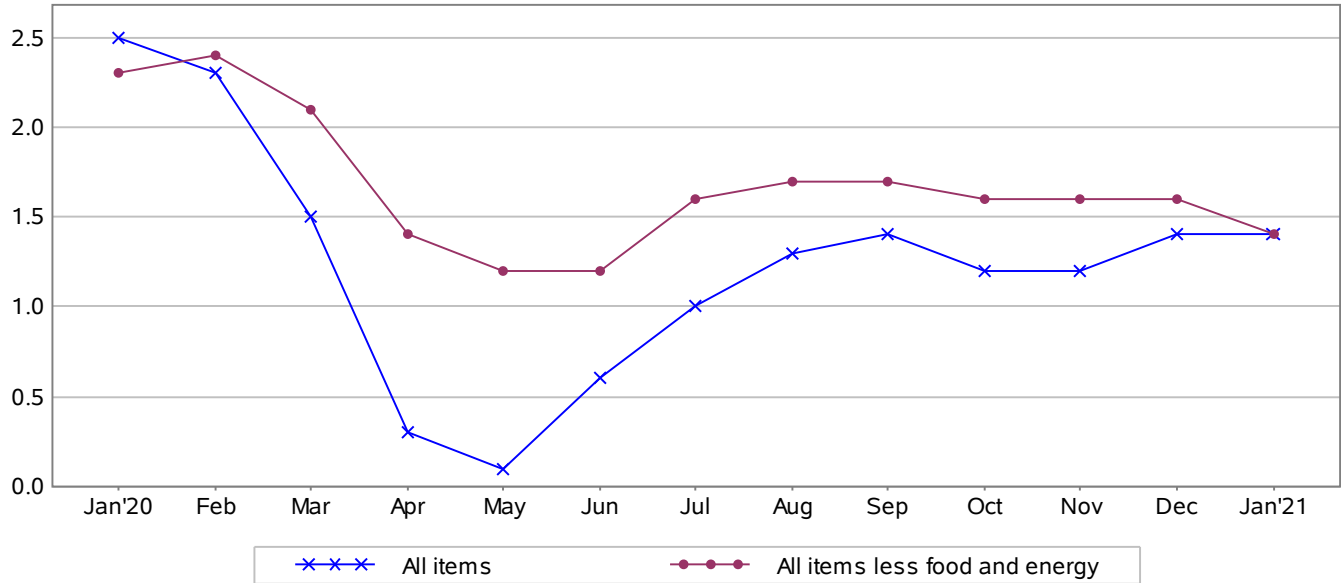
The all items index rose 1.4 percent for the 12 months ending January, the same increase as for the period ending in December. The index for all items less food and energy also rose 1.4 percent over the last 12 months, a smaller increase than the 1.6-percent rise for the 12 months ending December. The food index rose 3.8 percent over the last 12 months. In contrast to these increases, and despite rising in recent months, the energy index declined 3.6 percent over the last year.

**Chart 1. One-month percent change in CPI for All Urban Consumers (CPI-U), seasonally adjusted, Jan. 2020 - Jan. 2021**  
 Percent change



**Chart 2. 12-month percent change in CPI for All Urban Consumers (CPI-U), not seasonally adjusted, Jan. 2020 - Jan. 2021**

Percent change



**Table A. Percent changes in CPI for All Urban Consumers (CPI-U): U.S. city average**

	Seasonally adjusted changes from preceding month							Un-adjusted 12-mos. ended Jan. 2021
	Jul. 2020	Aug. 2020	Sep. 2020	Oct. 2020	Nov. 2020	Dec. 2020	Jan. 2021	
All items.....	0.5	0.4	0.2	0.1	0.2	0.2	0.3	1.4
Food.....	-0.3	0.1	0.1	0.2	0.0	0.3	0.1	3.8
Food at home.....	-0.9	0.0	-0.3	0.1	-0.2	0.3	-0.1	3.7
Food away from home <sup>1</sup> .....	0.5	0.3	0.6	0.3	0.1	0.4	0.3	3.9
Energy.....	2.1	0.9	1.4	0.6	0.7	2.6	3.5	-3.6
Energy commodities.....	4.5	2.1	1.4	0.7	0.5	5.1	7.3	-8.7
Gasoline (all types).....	4.8	2.1	1.7	0.7	0.5	5.2	7.4	-8.6
Fuel oil <sup>1</sup> .....	4.5	2.2	-3.0	0.7	3.3	10.2	5.4	-16.5
Energy services.....	0.0	-0.2	1.3	0.5	0.9	0.2	-0.3	2.1
Electricity.....	0.2	-0.2	0.8	0.6	0.3	0.4	-0.2	1.5
Utility (piped) gas service.....	-0.7	-0.1	3.1	0.4	3.0	-0.4	-0.4	4.3
All items less food and energy.....	0.5	0.3	0.2	0.1	0.2	0.0	0.0	1.4
Commodities less food and energy commodities.....	0.7	1.0	0.5	0.0	0.0	0.1	0.1	1.7
New vehicles.....	0.7	0.0	0.3	0.3	0.0	0.4	-0.5	1.4
Used cars and trucks.....	2.8	5.7	5.3	0.9	-1.4	-0.9	-0.9	10.0
Apparel.....	0.7	0.4	-0.4	-0.9	0.7	0.9	2.2	-2.5
Medical care commodities <sup>1</sup> .....	0.0	0.3	-0.6	-0.7	-0.4	-0.2	-0.1	-2.3
Services less energy services.....	0.5	0.1	0.1	0.1	0.2	0.0	0.0	1.3
Shelter.....	0.2	0.1	0.1	0.1	0.1	0.1	0.1	1.6
Transportation services.....	2.8	-0.7	-0.3	0.2	1.3	-0.6	-0.3	-4.1
Medical care services.....	0.5	0.1	0.0	-0.3	-0.1	-0.1	0.5	2.9

<sup>1</sup> Not seasonally adjusted.

## **Food**

The food index increased 0.1 percent in January. The index for food at home fell 0.1 percent over the month as four of the six major grocery store food group indexes declined. The index for cereals and bakery products fell 0.8 percent in January, its largest decline since March 2016. The index for dairy and related products fell 0.4 percent after rising the 2 previous months. The index for other food at home fell 0.3 percent, and the index for fruits and vegetables declined 0.2 percent over the month.

The index for meats, poultry, fish, and eggs rose in January, increasing 0.5 percent as the index for beef rose 1.1 percent. The nonalcoholic beverages index also increased in January, rising 0.1 percent after a much larger increase the prior month.

The food away from home index rose 0.3 percent in January, continuing a long series of increases. The index for limited service meals rose 0.6 percent, while the index for full service meals increased 0.3 percent.

The food at home index increased 3.7 percent over the past 12 months. All six major grocery store food group indexes increased over the period, with increases ranging from 2.5 percent (cereals and bakery products) to 5.1 percent (meats, poultry, fish, and eggs). The index for food away from home rose 3.9 percent over the last year. The index for limited service meals rose 6.2 percent, the largest 12-month increase in the history of the index, which began in 1997. The index for full service meals rose 2.9 percent over the last 12 months.

## **Energy**

The energy index continued to rise in January, increasing 3.5 percent. The gasoline index was again the dominant factor in the increase, rising 7.4 percent over the month. (Before seasonal adjustment, gasoline prices rose 6.9 percent in January.) The fuel oil index also rose in January, increasing 5.4 percent. However, other energy component indexes declined; the index for electricity fell 0.2 percent over the month, and the index for natural gas fell 0.4 percent.

The energy index fell 3.6 percent over the past 12 months. Despite recent monthly increases, the gasoline index fell 8.6 percent over the last 12 months, and the fuel oil index fell 16.5 percent. The index for electricity, however, rose 1.5 percent over the last 12 months and the index for natural gas increased 4.3 percent.

## **All items less food and energy**

The index for all items less food and energy was unchanged in January. The apparel index increased for the third month in a row, rising 2.2 percent. The medical care index rose 0.4 percent in January, although its components were mixed. The index for physicians' services rose sharply, increasing 1.6 percent, and the index for hospital services rose 0.3 percent. The index for prescription drugs, however, declined 0.5 percent over the month.

The shelter index rose 0.1 percent in January, the same increase as in each of the last 5 months. The indexes for rent and owners' equivalent rent both increased 0.1 percent. The motor vehicle insurance index rose 1.6 percent in January. The tobacco index also rose in January, increasing 1.8 percent.

In contrast, the recreation index declined in January, falling 0.6 percent. The index for used cars and trucks continued to fall, decreasing 0.9 percent over the month. The new vehicles index fell 0.5 percent in January after rising in December. The index for airline fares fell in January, declining 3.2 percent. The index for household furnishings and operations fell 0.3 percent over the month, and the indexes for communication and for alcoholic beverages also declined in January. The indexes for education and personal care were both unchanged over the month.

The index for all items less food and energy rose 1.4 percent over the past 12 months. Among the indexes rising more quickly were those for used cars and trucks (10.0 percent), medical care (1.9 percent), and shelter (1.6 percent). Among the indexes that declined over the last 12 months were airline fares (-21.3 percent), motor vehicle insurance (-3.7 percent), and apparel (-2.5 percent).

### **Not seasonally adjusted CPI measures**

The Consumer Price Index for All Urban Consumers (CPI-U) increased 1.4 percent over the last 12 months to an index level of 261.582 (1982-84=100). For the month, the index increased 0.4 percent prior to seasonal adjustment.

The Consumer Price Index for Urban Wage Earners and Clerical Workers (CPI-W) increased 1.6 percent over the last 12 months to an index level of 255.296 (1982-84=100). For the month, the index rose 0.5 percent prior to seasonal adjustment.

The Chained Consumer Price Index for All Urban Consumers (C-CPI-U) increased 1.3 percent over the last 12 months. For the month, the index increased 0.4 percent on a not seasonally adjusted basis. Please note that the indexes for the past 10 to 12 months are subject to revision.

---

**The Consumer Price Index for February 2021 is scheduled to be released on Wednesday, March 10, 2021 at 8:30 a.m. (ET).**

#### **Coronavirus (COVID-19) Pandemic Impact on January 2021 Consumer Price Index Data**

Data collection by personal visit for the Consumer Price Index (CPI) program has been suspended since March 16, 2020. When possible, data normally collected by personal visit were collected either online or by phone. Additionally, data collection in January was affected by the temporary closing or limited operations of certain types of establishments. These factors resulted in an increase in the number of prices considered temporarily unavailable and imputed.

While the CPI program attempted to collect as much data as possible, many indexes are based on smaller amounts of collected prices than usual, and a small number of indexes that are normally published were not published this month. Additional information is available at [www.bls.gov/covid19/effects-of-covid-19-pandemic-on-consumer-price-index.htm](http://www.bls.gov/covid19/effects-of-covid-19-pandemic-on-consumer-price-index.htm).

## **Technical Note**

### **Brief Explanation of the CPI**

The Consumer Price Index (CPI) measures the change in prices paid by consumers for goods and services. The CPI reflects spending patterns for each of two population groups: all urban consumers and urban wage earners and clerical workers. The all urban consumer group represents about 93 percent of the total U.S. population. It is based on the expenditures of almost all residents of urban or metropolitan areas, including professionals, the self-employed, the poor, the unemployed, and retired people, as well as urban wage earners and clerical workers. Not included in the CPI are the spending patterns of people living in rural nonmetropolitan areas, farming families, people in the Armed Forces, and those in institutions, such as prisons and mental hospitals. Consumer inflation for all urban consumers is measured by two indexes, namely, the Consumer Price Index for All Urban Consumers (CPI-U) and the Chained Consumer Price Index for All Urban Consumers (C-CPI-U).

The Consumer Price Index for Urban Wage Earners and Clerical Workers (CPI-W) is based on the expenditures of households included in the CPI-U definition that meet two requirements: more than one-half of the household's income must come from clerical or wage occupations, and at least one of the household's earners must have been employed for at least 37 weeks during the previous 12 months. The CPI-W population represents about 29 percent of the total U.S. population and is a subset of the CPI-U population.

The CPIs are based on prices of food, clothing, shelter, fuels, transportation, doctors' and dentists' services, drugs, and other goods and services that people buy for day-to-day living. Prices are collected each month in 75 urban areas across the country from about 6,000 housing units and approximately 22,000 retail establishments (department stores, supermarkets, hospitals, filling stations, and other types of stores and service establishments). All taxes directly associated with the purchase and use of items are included in the index. Prices of fuels and a few other items are obtained every month in all 75 locations. Prices of most other commodities and services are collected every month in the three largest geographic areas and every other month in other areas. Prices of most goods and services are obtained by personal visits or telephone calls by the Bureau's trained representatives.

In calculating the index, price changes for the various items in each location are aggregated using weights, which represent their importance in the spending of the appropriate population group. Local data are then combined to obtain a U.S. city average. For the CPI-U and CPI-W, separate indexes are also published by size of city, by region of the country, for cross-classifications of regions and population-size classes, and for 23 selected local areas. Area indexes do not measure differences in the level of prices among cities; they only measure the average change in prices for each area since the base period. For the C-CPI-U, data are issued only at the national level. The CPI-U and CPI-W are considered final when released, but the C-CPI-U is issued in preliminary form and subject to three subsequent quarterly revisions.

The index measures price change from a designed reference date. For most of the CPI-U and the CPI-W, the reference base is 1982-84 equals 100. The reference base for the C-CPI-U is December 1999 equals 100. An increase of 7 percent from the reference base, for example, is shown as 107.000. Alternatively, that relationship can also be expressed as the price of a base period market basket of goods and services rising from \$100 to \$107.

### **Sampling Error in the CPI**

The CPI is a statistical estimate that is subject to sampling error because it is based upon a sample of retail prices and not the complete universe of all prices. BLS calculates and publishes estimates of the 1-

month, 2-month, 6-month, and 12-month percent change standard errors annually for the CPI-U. These standard error estimates can be used to construct confidence intervals for hypothesis testing. For example, the estimated standard error of the 1-month percent change is 0.03 percent for the U.S. all items CPI. This means that if we repeatedly sample from the universe of all retail prices using the same methodology, and estimate a percentage change for each sample, then 95 percent of these estimates will be within 0.06 percent of the 1-month percentage change based on all retail prices. For example, for a 1-month change of 0.2 percent in the all items CPI-U, we are 95 percent confident that the actual percent change based on all retail prices would fall between 0.14 and 0.26 percent. For the latest data, including information on how to use the estimates of standard error, see <https://www.bls.gov/cpi/tables/variance-estimates/home.htm>.

### Calculating Index Changes

Movements of the indexes from 1 month to another are usually expressed as percent changes rather than changes in index points, because index point changes are affected by the level of the index in relation to its base period, while percent changes are not. The following table shows an example of using index values to calculate percent changes:

	<b>Item A</b>	<b>Item B</b>	<b>Item C</b>
<b>Year I</b>	112.500	225.000	110.000
<b>Year II</b>	121.500	243.000	128.000
<b>Change in index points</b>	9.000	18.000	18.000
<b>Percent change</b>	$9.0/112.500 \times 100 = 8.0$	$18.0/225.000 \times 100 = 8.0$	$18.0/110.000 \times 100 = 16.4$

### Use of Seasonally Adjusted and Unadjusted Data

The Consumer Price Index (CPI) produces both unadjusted and seasonally adjusted data. Seasonally adjusted data are computed using seasonal factors derived by the X-13ARIMA-SEATS seasonal adjustment method. These factors are updated each February, and the new factors are used to revise the previous 5 years of seasonally adjusted data. The factors are available at [www.bls.gov/cpi/tables/seasonal-adjustment/seasonal-factors-2021.xlsx](http://www.bls.gov/cpi/tables/seasonal-adjustment/seasonal-factors-2021.xlsx). For more information on data revision scheduling, please see the Factsheet on Seasonal Adjustment at [www.bls.gov/cpi/seasonal-adjustment/questions-and-answers.htm](http://www.bls.gov/cpi/seasonal-adjustment/questions-and-answers.htm) and the Timeline of Seasonal Adjustment Methodological Changes at [www.bls.gov/cpi/seasonal-adjustment/timeline-seasonal-adjustment-methodology-changes.htm](http://www.bls.gov/cpi/seasonal-adjustment/timeline-seasonal-adjustment-methodology-changes.htm).

For analyzing short-term price trends in the economy, seasonally adjusted changes are usually preferred since they eliminate the effect of changes that normally occur at the same time and in about the same magnitude every year—such as price movements resulting from weather events, production cycles, model changeovers, holidays, and sales. This allows data users to focus on changes that are not typical for the time of year. The unadjusted data are of primary interest to consumers concerned about the prices they actually pay. Unadjusted data are also used extensively for escalation purposes. Many collective bargaining contract agreements and pension plans, for example, tie compensation changes to the Consumer Price Index before adjustment for seasonal variation. BLS advises against the use of seasonally adjusted data in escalation agreements because seasonally adjusted series are revised annually.

### *Intervention Analysis*

The Bureau of Labor Statistics uses intervention analysis seasonal adjustment for some CPI series. Sometimes extreme values or sharp movements can distort the underlying seasonal pattern of price change. Intervention analysis seasonal adjustment is a process by which the distortions caused by such unusual events are estimated and removed from the data prior to calculation of seasonal factors. The resulting seasonal factors, which more accurately represent the seasonal pattern, are then applied to the unadjusted data.

For example, this procedure was used for the motor fuel series to offset the effects of the 2009 return to normal pricing after the worldwide economic downturn in 2008. Retaining this outlier data during seasonal factor calculation would distort the computation of the seasonal portion of the time series data for motor fuel, so it was estimated and removed from the data prior to seasonal adjustment. Following that, seasonal factors were calculated based on this “prior adjusted” data. These seasonal factors represent a clearer picture of the seasonal pattern in the data. The last step is for motor fuel seasonal factors to be applied to the unadjusted data.

For the seasonal factors introduced for January 2021, BLS adjusted 72 series using intervention analysis seasonal adjustment, including selected food and beverage items, motor fuels, electricity, and vehicles.

### *Revision of Seasonally Adjusted Indexes*

Seasonally adjusted data, including the U.S. city average all items index levels, are subject to revision for up to 5 years after their original release. Every year, economists in the CPI calculate new seasonal factors for seasonally adjusted series and apply them to the last 5 years of data. Seasonally adjusted indexes beyond the last 5 years of data are considered to be final and not subject to revision. For January 2021, revised seasonal factors and seasonally adjusted indexes for 2016 to 2020 were calculated and published. For series which are directly adjusted using the Census X-13ARIMA-SEATS seasonal adjustment software, the seasonal factors for 2020 will be applied to data for 2021 to produce the seasonally adjusted 2021 indexes. Series which are indirectly seasonally adjusted by summing seasonally adjusted component series have seasonal factors which are derived and are therefore not available in advance.

### *Determining Seasonal Status*

Each year the seasonal status of every series is reevaluated based upon certain statistical criteria. Using these criteria, BLS economists determine whether a series should change its status from "not seasonally adjusted" to "seasonally adjusted", or vice versa. If any of the 81 components of the U.S. city average all items index change their seasonal adjustment status from seasonally adjusted to not seasonally adjusted, not seasonally adjusted data will be used in the aggregation of the dependent series for the last 5 years, but the seasonally adjusted indexes before that period will not be changed. Thirty-four of the 81 components of the U.S. city average all items index are not seasonally adjusted for 2021.

### **Contact Information**

For additional information about the CPI visit [www.bls.gov/cpi](http://www.bls.gov/cpi) or contact the CPI Information and Analysis Section at 202-691-7000 or [cpi\\_info@bls.gov](mailto:cpi_info@bls.gov).

For additional information on seasonal adjustment in the CPI visit [www.bls.gov/cpi/seasonal-adjustment/home.htm](http://www.bls.gov/cpi/seasonal-adjustment/home.htm) or contact the CPI seasonal adjustment section at 202-691-6968 or [cpiseas@bls.gov](mailto:cpiseas@bls.gov).

Information from this release will be made available to sensory impaired individuals upon request. Voice phone: 202-691-5200; Federal Relay Service: 1-800-877-8339.

**Table 1. Consumer Price Index for All Urban Consumers (CPI-U): U.S. city average, by expenditure category, January 2021**

[1982-84=100, unless otherwise noted]

Expenditure category	Relative importance Dec. 2020	Unadjusted indexes			Unadjusted percent change		Seasonally adjusted percent change		
		Jan. 2020	Dec. 2020	Jan. 2021	Jan. 2020-Jan. 2021	Dec. 2020-Jan. 2021	Oct. 2020-Nov. 2020	Nov. 2020-Dec. 2020	Dec. 2020-Jan. 2021
All items.....	100.000	257.971	260.474	261.582	1.4	0.4	0.2	0.2	0.3
Food.....	14.119	261.057	270.023	270.938	3.8	0.3	0.0	0.3	0.1
Food at home.....	7.772	243.110	251.253	252.107	3.7	0.3	-0.2	0.3	-0.1
Cereals and bakery products.....	1.001	275.916	283.735	282.911	2.5	-0.3	-0.3	0.3	-0.8
Meats, poultry, fish, and eggs.....	1.736	252.905	264.475	265.922	5.1	0.5	0.1	-0.2	0.5
Dairy and related products.....	0.792	223.035	231.740	231.546	3.8	-0.1	0.3	0.7	-0.4
Fruits and vegetables.....	1.341	301.679	306.506	309.954	2.7	1.1	0.1	-0.2	-0.2
Nonalcoholic beverages and beverage materials.....	0.930	172.313	177.539	179.789	4.3	1.3	-0.6	0.9	0.1
Other food at home.....	1.972	210.763	218.534	217.824	3.4	-0.3	-0.5	0.7	-0.3
Food away from home <sup>1</sup> .....	6.347	289.137	299.369	300.382	3.9	0.3	0.1	0.4	0.3
Energy.....	6.155	213.043	198.155	205.273	-3.6	3.6	0.7	2.6	3.5
Energy commodities.....	3.020	232.906	198.997	212.676	-8.7	6.9	0.5	5.1	7.3
Fuel oil <sup>1</sup> .....	0.084	291.872	231.044	243.588	-16.5	5.4	3.3	10.2	5.4
Motor fuel.....	2.875	228.343	194.996	208.387	-8.7	6.9	0.5	5.2	7.4
Gasoline (all types).....	2.811	227.010	193.990	207.406	-8.6	6.9	0.5	5.2	7.4
Energy services.....	3.135	203.318	206.758	207.649	2.1	0.4	0.9	0.2	-0.3
Electricity.....	2.425	212.018	214.375	215.242	1.5	0.4	0.3	0.4	-0.2
Utility (piped) gas service.....	0.710	174.272	180.767	181.709	4.3	0.5	3.0	-0.4	-0.4
All items less food and energy.....	79.726	266.004	269.226	269.755	1.4	0.2	0.2	0.0	0.0
Commodities less food and energy.....	20.200	143.532	145.317	145.973	1.7	0.5	0.0	0.1	0.1
Apparel.....	2.663	120.853	114.434	117.785	-2.5	2.9	0.7	0.9	2.2
New vehicles.....	3.756	147.253	149.091	149.377	1.4	0.2	0.0	0.4	-0.5
Used cars and trucks.....	2.750	136.064	150.891	149.659	10.0	-0.8	-1.4	-0.9	-0.9
Medical care commodities <sup>1</sup> .....	1.580	386.331	377.921	377.546	-2.3	-0.1	-0.4	-0.2	-0.1
Alcoholic beverages.....	1.038	253.592	259.397	259.765	2.4	0.1	0.4	0.1	-0.1
Tobacco and smoking products <sup>1</sup> .....	0.608	1,144.642	1,199.508	1,220.942	6.7	1.8	0.5	0.6	1.8
Services less energy services.....	59.526	342.694	346.808	347.190	1.3	0.1	0.2	0.0	0.0
Shelter.....	33.316	323.053	327.702	328.282	1.6	0.2	0.1	0.1	0.1
Rent of primary residence.....	7.862	337.825	344.455	344.758	2.1	0.1	0.1	0.1	0.1
Owners' equivalent rent of residences <sup>2</sup> .....	24.263	331.522	337.695	338.181	2.0	0.1	0.1	0.1	0.1
Medical care services.....	7.289	552.721	564.201	568.778	2.9	0.8	-0.1	-0.1	0.5
Physicians' services <sup>1</sup> .....	1.817	384.715	391.807	397.892	3.4	1.6	0.0	-0.1	1.6
Hospital services <sup>3</sup> .....	2.221	349.152	355.232	358.733	2.7	1.0	0.3	0.3	0.3
Transportation services.....	5.142	324.500	312.959	311.312	-4.1	-0.5	1.3	-0.6	-0.3
Motor vehicle maintenance and repair <sup>1</sup> .....	1.099	300.112	309.888	310.662	3.5	0.2	0.4	0.0	0.2
Motor vehicle insurance.....	1.598	572.693	545.376	551.552	-3.7	1.1	-0.2	-0.1	1.6
Airline fares.....	0.633	255.200	205.983	200.825	-21.3	-2.5	3.7	-2.5	-3.2

<sup>1</sup> Not seasonally adjusted.

<sup>2</sup> Indexes on a December 1982=100 base.

<sup>3</sup> Indexes on a December 1996=100 base.



**Table 2. Consumer Price Index for All Urban Consumers (CPI-U): U.S. city average, by detailed expenditure category, January 2021**

[1982-84=100, unless otherwise noted]

Expenditure category	Relative importance Dec. 2020	Unadjusted percent change		Seasonally adjusted percent change		
		Jan. 2020- Jan. 2021	Dec. 2020- Jan. 2021	Oct. 2020- Nov. 2020	Nov. 2020- Dec. 2020	Dec. 2020- Jan. 2021
		All items.....	100.000	1.4	0.4	0.2
Food.....	14.119	3.8	0.3	0.0	0.3	0.1
Food at home.....	7.772	3.7	0.3	-0.2	0.3	-0.1
Cereals and bakery products.....	1.001	2.5	-0.3	-0.3	0.3	-0.8
Cereals and cereal products.....	0.308	2.6	-0.1	0.0	0.4	-0.5
Flour and prepared flour mixes.....	0.041	1.7	2.9	0.6	0.0	-1.6
Breakfast cereal <sup>1</sup> .....	0.142	3.2	-0.7	-0.6	1.0	-0.7
Rice, pasta, cornmeal.....	0.124	2.4	-0.5	-0.1	0.9	-0.8
Rice <sup>1, 2, 3</sup> .....		4.4	-0.4	1.2	0.0	-0.4
Bakery products <sup>1</sup> .....	0.693	2.5	-0.4	-0.8	0.1	-0.4
Bread <sup>1, 2</sup> .....	0.200	3.5	-0.8	-0.5	0.2	-0.8
White bread <sup>1, 3</sup> .....		2.3	-1.3	-0.6	0.0	-1.3
Bread other than white <sup>1, 3</sup> .....		4.8	-0.5	-0.6	0.7	-0.5
Fresh biscuits, rolls, muffins <sup>2</sup> .....	0.101	4.1	0.4	-0.5	0.2	0.1
Cakes, cupcakes, and cookies <sup>1</sup> .....	0.178	1.5	0.2	-0.5	0.3	0.2
Cookies <sup>1, 3</sup> .....		2.1	-0.9	-1.7	0.7	-0.9
Fresh cakes and cupcakes <sup>1, 3</sup> .....		0.0	2.0	0.1	0.1	2.0
Other bakery products.....	0.214	1.6	-0.8	0.4	0.0	-2.5
Fresh sweetrolls, coffeecakes, doughnuts <sup>1, 3</sup> .....		4.2	-1.4	1.0	0.1	-1.4
Crackers, bread, and cracker products <sup>3</sup> .....		3.2	1.3	2.1	-2.3	-0.9
Frozen and refrigerated bakery products, pies, tarts, turnovers <sup>1, 3</sup> .....		-0.7	-1.7	-3.4	3.2	-3.5
Meats, poultry, fish, and eggs.....	1.736	5.1	0.5	0.1	-0.2	0.5
Meats, poultry, and fish.....	1.637	5.4	0.6	0.1	0.0	0.5
Meats.....	1.026	5.5	0.7	0.1	0.2	0.6
Beef and veal.....	0.471	6.4	0.9	0.3	-0.1	1.1
Uncooked ground beef <sup>1</sup> .....	0.173	4.4	-0.2	0.4	-1.0	-0.2
Uncooked beef roasts <sup>1, 2</sup> .....	0.073	8.4	0.8	0.6	-0.4	0.8
Uncooked beef steaks <sup>2</sup> .....	0.180	6.6	2.1	-0.1	0.0	2.6
Uncooked other beef and veal <sup>1, 2</sup> .....	0.044	9.7	0.7	0.5	0.8	0.7
Pork.....	0.322	5.3	0.9	-0.1	0.6	0.3
Bacon, breakfast sausage, and related products <sup>2</sup> .....	0.134	3.5	0.1	0.2	1.3	-1.7
Bacon and related products <sup>3</sup> .....		5.0	-0.4	1.0	2.4	-1.9
Breakfast sausage and related products <sup>2, 3</sup> .....		1.9	1.5	-1.4	1.2	-1.9
Ham.....	0.062	2.9	3.8	-1.3	1.0	3.1
Ham, excluding canned <sup>3</sup> .....		3.3	3.8	-1.1	0.3	3.9
Pork chops <sup>1</sup> .....	0.052	7.8	-2.4	3.0	-0.9	-2.4
Other pork including roasts, steaks, and ribs <sup>2</sup> .....	0.075	9.0	2.3	-1.4	0.0	2.4
Other meats.....	0.233	4.2	-0.2	0.1	0.1	0.1
Frankfurters <sup>3</sup> .....		4.4	-0.6	-3.5	1.3	0.0
Lunchmeats <sup>1, 2, 3</sup> .....		4.3	-0.1	-0.3	-0.1	0.3
Poultry <sup>1</sup> .....	0.333	6.1	0.5	0.0	-0.9	0.5
Chicken <sup>1, 2</sup> .....	0.273	5.6	-0.2	1.1	-0.7	-0.2
Fresh whole chicken <sup>1, 3</sup> .....		3.8	-0.3	1.5	-1.0	-0.3
Fresh and frozen chicken parts <sup>1, 3</sup> .....		6.2	-0.3	1.1	-0.4	-0.3
Other uncooked poultry including turkey <sup>2</sup> .....	0.060	7.9	3.9	-1.7	-2.1	2.7
Fish and seafood.....	0.278	4.3	0.2	0.2	0.5	-0.2
Fresh fish and seafood <sup>2</sup> .....	0.140	3.7	0.1	0.1	0.6	-0.8
Processed fish and seafood <sup>2</sup> .....	0.138	4.9	0.3	0.3	0.2	0.6
Shelf stable fish and seafood <sup>3</sup> .....		5.5	0.6	1.5	0.0	0.9
Frozen fish and seafood <sup>3</sup> .....		5.0	0.6	-0.2	0.5	0.3
Eggs.....	0.099	0.8	0.2	0.5	-2.8	1.1

See footnotes at end of table.

**Table 2. Consumer Price Index for All Urban Consumers (CPI-U): U.S. city average, by detailed expenditure category, January 2021 — Continued**  
 [1982-84=100, unless otherwise noted]

Expenditure category	Relative importance Dec. 2020	Unadjusted percent change		Seasonally adjusted percent change		
		Jan. 2020- Jan. 2021	Dec. 2020- Jan. 2021	Oct. 2020- Nov. 2020	Nov. 2020- Dec. 2020	Dec. 2020- Jan. 2021
Dairy and related products.....	0.792	3.8	-0.1	0.3	0.7	-0.4
Milk <sup>2</sup> .....	0.218	3.2	-1.4	0.6	1.7	-1.2
Fresh whole milk <sup>3</sup> .....		4.7	-1.4	0.8	2.0	-1.2
Fresh milk other than whole <sup>2, 3</sup> .....		2.7	-1.2	0.2	1.6	-0.8
Cheese and related products <sup>1</sup> .....	0.266	4.5	0.4	-0.3	0.4	0.4
Ice cream and related products.....	0.111	3.3	0.7	0.7	0.3	-0.3
Other dairy and related products <sup>1, 2</sup> .....	0.197	3.8	0.3	-0.3	0.5	0.3
Fruits and vegetables.....	1.341	2.7	1.1	0.1	-0.2	-0.2
Fresh fruits and vegetables.....	1.053	2.4	1.3	0.0	-0.3	-0.1
Fresh fruits.....	0.538	3.6	1.9	0.5	-0.2	1.2
Apples.....	0.073	1.5	2.1	-0.1	0.7	0.7
Bananas <sup>1</sup> .....	0.074	0.5	3.8	0.6	-1.2	3.8
Citrus fruits <sup>2</sup> .....	0.136	5.4	1.3	3.4	-0.4	3.4
Oranges, including tangerines <sup>3</sup> .....		4.6	1.6	3.6	1.7	1.4
Other fresh fruits <sup>2</sup> .....	0.254	4.2	1.6	-0.5	-0.8	-1.9
Fresh vegetables.....	0.516	1.1	0.6	-0.5	-0.5	-1.5
Potatoes.....	0.075	1.4	7.0	-0.7	-0.2	1.7
Lettuce <sup>1</sup> .....	0.068	4.1	-3.8	3.0	-0.4	-3.8
Tomatoes.....	0.082	-1.4	1.1	-3.9	-3.3	-0.9
Other fresh vegetables.....	0.290	1.1	-0.1	-0.1	0.6	-1.8
Processed fruits and vegetables <sup>2</sup> .....	0.288	4.1	0.5	0.5	0.4	-0.7
Canned fruits and vegetables <sup>2</sup> .....	0.150	4.7	0.8	1.6	0.1	-0.5
Canned fruits <sup>2, 3</sup> .....		3.1	-0.7	1.4	0.1	-1.7
Canned vegetables <sup>2, 3</sup> .....		6.5	2.0	1.1	0.5	0.0
Frozen fruits and vegetables <sup>2</sup> .....	0.086	4.1	0.8	-0.5	0.7	0.1
Frozen vegetables <sup>3</sup> .....		2.6	1.0	-0.4	-0.3	-0.2
Other processed fruits and vegetables including dried <sup>2</sup> .....	0.052	2.3	-0.7	-0.7	1.2	-1.1
Dried beans, peas, and lentils <sup>1, 2, 3</sup> .....		4.1	-0.6	-1.0	2.1	-0.6
Nonalcoholic beverages and beverage materials.....	0.930	4.3	1.3	-0.6	0.9	0.1
Juices and nonalcoholic drinks <sup>2</sup> .....	0.666	5.0	1.4	-0.6	0.8	-0.1
Carbonated drinks.....	0.278	7.4	3.5	-0.7	1.2	0.8
Frozen noncarbonated juices and drinks <sup>1, 2</sup> .....	0.006	0.9	0.0	-0.9	1.6	0.0
Nonfrozen noncarbonated juices and drinks <sup>2</sup> .....	0.382	3.3	0.0	0.0	0.2	-0.6
Beverage materials including coffee and tea <sup>2</sup> .....	0.264	2.7	0.8	-0.6	1.1	0.1
Coffee.....	0.169	2.5	1.4	-1.5	1.1	0.8
Roasted coffee <sup>3</sup> .....		2.6	1.6	-1.0	0.9	0.6
Instant coffee <sup>1, 3</sup> .....		2.5	-0.6	-5.2	4.2	-0.6
Other beverage materials including tea <sup>1, 2</sup> .....	0.095	3.1	-0.2	1.1	1.0	-0.2
Other food at home.....	1.972	3.4	-0.3	-0.5	0.7	-0.3
Sugar and sweets <sup>1</sup> .....	0.270	2.8	0.8	-0.1	0.5	0.8
Sugar and sugar substitutes.....	0.037	6.1	1.0	2.5	0.4	-2.5
Candy and chewing gum <sup>1, 2</sup> .....	0.180	2.8	0.9	0.0	0.8	0.9
Other sweets <sup>2</sup> .....	0.053	0.5	0.5	-0.3	0.8	-1.8
Fats and oils.....	0.212	2.0	1.6	0.1	0.4	0.4
Butter and margarine <sup>2</sup> .....	0.063	-1.0	1.8	-2.0	2.1	-1.3
Butter <sup>3</sup> .....		-2.6	3.4	-2.1	0.9	-0.4
Margarine <sup>3</sup> .....		0.4	-1.8	-1.0	2.4	-2.9
Salad dressing <sup>2</sup> .....	0.051	1.9	0.4	1.2	0.2	0.7
Other fats and oils including peanut butter <sup>2</sup> .....	0.098	4.0	2.0	0.6	0.1	1.0
Peanut butter <sup>1, 2, 3</sup> .....				0.1	3.2	
Other foods.....	1.489	3.7	-0.8	-0.7	0.7	-0.6
Soups.....	0.089	2.8	-2.9	-0.5	1.2	-3.0
Frozen and freeze dried prepared foods.....	0.259	3.1	-1.9	0.2	0.3	-0.7

See footnotes at end of table.

**Table 2. Consumer Price Index for All Urban Consumers (CPI-U): U.S. city average, by detailed expenditure category, January 2021 — Continued**  
 [1982-84=100, unless otherwise noted]

Expenditure category	Relative importance Dec. 2020	Unadjusted percent change		Seasonally adjusted percent change		
		Jan. 2020- Jan. 2021	Dec. 2020- Jan. 2021	Oct. 2020- Nov. 2020	Nov. 2020- Dec. 2020	Dec. 2020- Jan. 2021
Snacks <sup>1</sup> .....	0.340	3.7	-1.8	-0.9	0.1	-1.8
Spices, seasonings, condiments, sauces.....	0.290	3.7	1.7	0.0	-0.1	-0.4
Salt and other seasonings and spices <sup>2, 3</sup> .....		3.1	1.0	1.4	2.2	-1.9
Olives, pickles, relishes <sup>1, 2, 3</sup> .....		1.7	-0.5	-0.2	-0.4	-0.5
Sauces and gravies <sup>2, 3</sup> .....		4.7	2.6	-0.5	-2.0	1.6
Other condiments <sup>3</sup> .....		1.7	2.2	-1.4	0.1	0.1
Baby food <sup>1, 2</sup> .....	0.042	4.2	0.2	1.4	-1.1	0.2
Other miscellaneous foods <sup>2</sup> .....	0.469	4.1	-0.7	-1.2	0.9	1.1
Prepared salads <sup>3, 4</sup> .....		0.4	-0.1	0.4	0.7	0.7
Food away from home <sup>1</sup> .....	6.347	3.9	0.3	0.1	0.4	0.3
Full service meals and snacks <sup>1, 2</sup> .....	3.176	2.9	0.3	0.3	0.3	0.3
Limited service meals and snacks <sup>1, 2</sup> .....	2.787	6.2	0.6	0.2	0.5	0.6
Food at employee sites and schools <sup>1, 2</sup> .....	0.130	-14.1	-4.7	-6.3	0.0	-4.7
Food at elementary and secondary schools <sup>1, 3, 5</sup> .....		-21.9	-9.0	-8.8	0.1	-9.0
Food from vending machines and mobile vendors <sup>1, 2</sup> .....	0.080	2.2	1.8	-0.1	0.1	1.8
Other food away from home <sup>1, 2</sup> .....	0.174	1.8	0.0	0.1	0.1	0.0
Energy.....	6.155	-3.6	3.6	0.7	2.6	3.5
Energy commodities.....	3.020	-8.7	6.9	0.5	5.1	7.3
Fuel oil and other fuels.....	0.145	-7.6	7.0	1.5	3.9	4.4
Fuel oil <sup>1</sup> .....	0.084	-16.5	5.4	3.3	10.2	5.4
Propane, kerosene, and firewood <sup>6</sup> .....	0.061	7.7	9.2	0.4	1.0	6.8
Motor fuel.....	2.875	-8.7	6.9	0.5	5.2	7.4
Gasoline (all types).....	2.811	-8.6	6.9	0.5	5.2	7.4
Gasoline, unleaded regular <sup>3</sup> .....		-8.8	7.2	0.1	5.4	7.1
Gasoline, unleaded midgrade <sup>3, 7</sup> .....		-7.5	5.5	0.8	4.5	5.5
Gasoline, unleaded premium <sup>3</sup> .....		-7.5	5.0	0.6	3.5	5.1
Other motor fuels <sup>1, 2</sup> .....	0.064	-13.2	4.7	-0.2	4.3	4.7
Energy services.....	3.135	2.1	0.4	0.9	0.2	-0.3
Electricity.....	2.425	1.5	0.4	0.3	0.4	-0.2
Utility (piped) gas service.....	0.710	4.3	0.5	3.0	-0.4	-0.4
All items less food and energy.....	79.726	1.4	0.2	0.2	0.0	0.0
Commodities less food and energy commodities.....	20.200	1.7	0.5	0.0	0.1	0.1
Household furnishings and supplies <sup>8</sup> .....	3.783	2.4	0.2	0.8	0.0	-0.5
Window and floor coverings and other linens <sup>1, 2</sup> .....	0.271	-3.1	3.0	-2.8	-2.3	3.0
Floor coverings <sup>1, 2</sup> .....	0.062	-1.9	0.5	-0.4	-1.3	0.5
Window coverings <sup>1, 2</sup> .....	0.058	-3.4	-1.0	-2.5	-1.2	-1.0
Other linens <sup>1, 2</sup> .....	0.151	-3.4	5.7	-3.8	-3.0	5.7
Furniture and bedding <sup>1</sup> .....	0.944	1.5	-0.5	0.8	0.2	-0.5
Bedroom furniture <sup>1</sup> .....	0.329	-2.4	-1.1	1.7	0.2	-1.1
Living room, kitchen, and dining room furniture <sup>1, 2</sup> .....	0.454	2.6	0.0	0.1	0.2	0.0
Other furniture <sup>2</sup> .....	0.152	7.0	-0.5	1.1	0.1	-1.7
Appliances <sup>2</sup> .....	0.220	5.7	0.3	1.6	0.0	-1.1
Major appliances <sup>2</sup> .....	0.078	15.8	1.8	2.8	-2.1	-1.3
Laundry equipment <sup>1, 3</sup> .....		23.1	5.2	3.9	2.5	3.5
Other appliances <sup>1, 2</sup> .....	0.140	0.7	-0.6	0.4	0.2	-0.6
Other household equipment and furnishings <sup>1, 2</sup> .....	0.535	2.4	2.3	0.1	-0.3	2.3
Clocks, lamps, and decorator items <sup>1</sup> .....	0.313	3.4	2.2	1.1	-0.6	2.2
Indoor plants and flowers <sup>9</sup> .....	0.093	7.7	1.9	0.0	1.2	2.9
Dishes and flatware <sup>1, 2</sup> .....	0.052	-4.9	3.0	2.0	-2.9	3.0
Nonelectric cookware and tableware <sup>1, 2</sup> .....	0.077	-2.5	2.5	-3.5	-0.3	2.5
Tools, hardware, outdoor equipment and supplies <sup>2</sup> .....	0.892	1.7	-1.4	0.4	0.4	-1.8
Tools, hardware and supplies <sup>1, 2</sup> .....	0.243	2.4	0.1	-1.9	0.1	0.1
Outdoor equipment and supplies <sup>2</sup> .....	0.459	1.3	-2.3	1.4	0.3	-2.5

See footnotes at end of table.

**Table 2. Consumer Price Index for All Urban Consumers (CPI-U): U.S. city average, by detailed expenditure category, January 2021 — Continued**  
 [1982-84=100, unless otherwise noted]

Expenditure category	Relative importance Dec. 2020	Unadjusted percent change		Seasonally adjusted percent change		
		Jan. 2020- Jan. 2021	Dec. 2020- Jan. 2021	Oct. 2020- Nov. 2020	Nov. 2020- Dec. 2020	Dec. 2020- Jan. 2021
Housekeeping supplies <sup>1</sup> .....	0.922	5.3	0.2	1.2	-0.4	0.2
Household cleaning products <sup>1, 2</sup> .....	0.367	6.3	0.4	0.1	0.9	0.4
Household paper products <sup>1, 2</sup> .....	0.235	9.1	0.5	4.0	0.1	0.5
Miscellaneous household products <sup>1, 2</sup> .....	0.320	1.6	-0.2	0.3	-2.4	-0.2
Apparel.....	2.663	-2.5	2.9	0.7	0.9	2.2
Men's and boys' apparel.....	0.666	-2.6	4.3	1.6	1.0	1.4
Men's apparel.....	0.532	-3.6	4.4	1.7	1.3	1.1
Men's suits, sport coats, and outerwear.....	0.088	-15.6	1.7	2.3	3.2	-0.8
Men's underwear, nightwear, swimwear, and accessories <sup>1</sup> .....	0.158	-0.7	0.3	-2.4	-2.6	0.3
Men's shirts and sweaters <sup>2</sup> .....	0.150	-3.0	3.1	3.3	3.1	0.8
Men's pants and shorts.....	0.130	1.3	12.6	1.2	0.4	5.3
Boys' apparel.....	0.134	1.5	3.9	0.7	1.0	3.4
Women's and girls' apparel.....	1.075	-3.3	2.8	-0.1	1.2	3.1
Women's apparel.....	0.875	-5.5	2.5	-0.5	1.0	2.4
Women's outerwear.....	0.062	-1.6	-0.2	-1.4	1.5	2.1
Women's dresses.....	0.092	-11.6	-4.4	2.2	1.9	-1.3
Women's suits and separates <sup>2</sup> .....	0.446	-3.6	5.1	-2.3	1.9	5.5
Women's underwear, nightwear, swimwear, and accessories <sup>2</sup> .....	0.265	-7.5	1.0	0.9	-1.3	0.2
Girls' apparel.....	0.200	7.7	4.5	1.5	2.2	6.2
Footwear.....	0.644	-2.1	1.0	1.1	0.3	1.4
Men's footwear <sup>1</sup> .....	0.224	0.1	3.8	-1.1	-1.6	3.8
Boys' and girls' footwear.....	0.136	-1.9	-0.4	4.6	-1.3	0.5
Women's footwear.....	0.284	-4.0	-0.4	0.6	1.0	-0.7
Infants' and toddlers' apparel.....	0.125	-5.7	-0.9	3.1	-0.8	0.5
Jewelry and watches <sup>6</sup> .....	0.153	3.9	8.8	-1.1	2.0	4.1
Watches <sup>1, 6</sup> .....	0.040	4.0	0.3	-0.9	1.7	0.3
Jewelry <sup>6</sup> .....	0.114	3.8	11.8	-2.1	1.5	6.0
Transportation commodities less motor fuel <sup>8</sup> .....	7.144	4.6	-0.2	-0.6	-0.1	-0.6
New vehicles.....	3.756	1.4	0.2	0.0	0.4	-0.5
New cars and trucks <sup>2, 3</sup> .....		1.5	0.2	0.0	0.5	-0.6
New cars <sup>3</sup> .....		1.6	0.3	-0.1	0.5	-0.5
New trucks <sup>3, 10</sup> .....		1.5	0.2	0.0	0.5	-0.6
Used cars and trucks.....	2.750	10.0	-0.8	-1.4	-0.9	-0.9
Motor vehicle parts and equipment <sup>1</sup> .....	0.393	0.6	0.6	-0.2	0.6	0.6
Tires <sup>1</sup> .....	0.249	1.4	1.0	-0.4	0.7	1.0
Vehicle accessories other than tires <sup>1, 2</sup> .....	0.144	-0.8	-0.1	0.2	0.4	-0.1
Vehicle parts and equipment other than tires <sup>1, 3</sup> .....		-0.7	0.2	0.0	-0.1	0.2
Motor oil, coolant, and fluids <sup>1, 3</sup> .....		-2.4	-0.3	0.7	1.2	-0.3
Medical care commodities <sup>1</sup> .....	1.580	-2.3	-0.1	-0.4	-0.2	-0.1
Medicinal drugs <sup>8</sup> .....	1.515	-2.1	-0.3	-0.1	-0.2	-0.6
Prescription drugs.....	1.141	-2.4	0.0	-0.1	-0.2	-0.5
Nonprescription drugs <sup>1, 8</sup> .....	0.374	-1.3	-1.1	0.1	-0.4	-1.1
Medical equipment and supplies <sup>1, 8</sup> .....	0.066	-6.1	3.5	-5.3	-0.2	3.5
Recreation commodities <sup>8</sup> .....	2.008	-0.2	0.5	0.3	0.2	0.1
Video and audio products <sup>8</sup> .....	0.269	-0.8	-0.1	-0.5	0.2	-0.7
Televisions.....	0.091	-2.9	1.9	1.0	0.7	0.7
Other video equipment <sup>2</sup> .....	0.042	4.8	3.3	-1.5	1.3	2.2
Audio equipment <sup>1</sup> .....	0.079	-1.6	-3.3	-1.6	-0.3	-3.3
Recorded music and music subscriptions <sup>1, 2</sup> .....	0.045	-1.1	-1.5	-0.5	-1.2	-1.5
Pets and pet products <sup>1</sup> .....	0.632	-1.7	0.0	0.9	0.5	0.0
Pet food <sup>1, 2, 3</sup> .....		-0.5	-0.1	0.8	0.0	-0.1
Purchase of pets, pet supplies, accessories <sup>1, 2, 3</sup> .....		-3.3	0.2	1.1	1.1	0.2

See footnotes at end of table.

**Table 2. Consumer Price Index for All Urban Consumers (CPI-U): U.S. city average, by detailed expenditure category, January 2021 — Continued**  
 [1982-84=100, unless otherwise noted]

Expenditure category	Relative importance Dec. 2020	Unadjusted percent change		Seasonally adjusted percent change		
		Jan. 2020-Jan. 2021	Dec. 2020-Jan. 2021	Oct. 2020-Nov. 2020	Nov. 2020-Dec. 2020	Dec. 2020-Jan. 2021
Sporting goods <sup>1</sup> .....	0.604	2.8	0.7	0.6	0.7	0.7
Sports vehicles including bicycles <sup>1</sup> .....	0.361	1.0	0.3	0.5	-0.8	0.3
Sports equipment <sup>1</sup> .....	0.232	5.7	1.3	0.7	3.2	1.3
Photographic equipment and supplies.....	0.026	4.6	1.4	0.5	1.2	1.2
Photographic equipment <sup>2, 3</sup> .....		6.5	1.8	1.3	2.1	2.0
Recreational reading materials <sup>1</sup> .....	0.120	4.3	1.0	0.1	0.7	1.0
Newspapers and magazines <sup>1, 2</sup> .....	0.068	4.3	2.1	1.0	0.2	2.1
Recreational books <sup>1, 2</sup> .....	0.050	4.3	-0.4	-1.0	1.2	-0.4
Other recreational goods <sup>2</sup> .....	0.356	-3.8	1.0	-0.3	-1.3	-0.4
Toys.....	0.274	-4.1	1.2	-0.3	-0.4	-0.6
Toys, games, hobbies and playground equipment <sup>1, 3</sup> .....		-1.0	1.8	-0.6	0.4	-0.9
Sewing machines, fabric and supplies <sup>1, 2</sup> .....	0.020	-6.1	2.0	0.2	-10.4	2.0
Music instruments and accessories <sup>1, 2</sup> .....	0.046	-1.1	-0.7	-0.8	-2.4	-0.7
Education and communication commodities <sup>8</sup> .....	0.501	-1.9	-0.5	0.5	0.3	-0.6
Educational books and supplies <sup>1</sup> .....	0.109	3.0	-0.2	-0.2	0.7	-0.2
College textbooks <sup>1, 3, 11</sup> .....		2.7	-0.2	-0.4	0.8	-0.2
Information technology commodities <sup>8</sup> .....	0.392	-3.2	-0.5	0.7	0.3	-0.7
Computers, peripherals, and smart home assistants <sup>1, 4</sup> .....	0.297	1.6	0.0	2.1	0.9	0.0
Computer software and accessories <sup>1, 2</sup> .....	0.018	-5.1	-1.2	4.6	1.7	-1.2
Telephone hardware, calculators, and other consumer information items <sup>2</sup> .....	0.077	-17.8	-2.5	-4.6	-2.5	-3.1
Alcoholic beverages.....	1.038	2.4	0.1	0.4	0.1	-0.1
Alcoholic beverages at home.....	0.580	2.4	0.2	0.3	0.0	0.0
Beer, ale, and other malt beverages at home.....	0.223	2.2	0.0	0.5	-0.2	-0.1
Distilled spirits at home <sup>1</sup> .....	0.094	2.8	0.8	-0.1	0.1	0.8
Whiskey at home <sup>1, 3</sup> .....		2.7	0.9	0.1	-0.3	0.9
Distilled spirits, excluding whiskey, at home <sup>1, 3</sup> .....		3.1	1.0	-0.1	0.2	1.0
Wine at home.....	0.263	2.4	0.1	0.2	0.1	-0.1
Alcoholic beverages away from home <sup>1</sup> .....	0.458	2.5	0.1	0.6	0.0	0.1
Beer, ale, and other malt beverages away from home <sup>1, 2, 3</sup> .....		2.1	0.0	0.9	0.5	0.0
Wine away from home <sup>1, 2, 3</sup> .....		2.6	0.0	0.4	0.1	0.0
Distilled spirits away from home <sup>1, 2, 3</sup> .....		5.9	0.2	0.7	-0.3	0.2
Other goods <sup>8</sup> .....	1.483	2.2	1.1	0.5	0.0	1.1
Tobacco and smoking products <sup>1</sup> .....	0.608	6.7	1.8	0.5	0.6	1.8
Cigarettes <sup>1, 2</sup> .....	0.529	7.0	1.8	0.6	0.7	1.8
Tobacco products other than cigarettes <sup>1, 2</sup> .....	0.060	4.1	1.4	0.2	-0.1	1.4
Personal care products <sup>1</sup> .....	0.678	0.2	0.6	0.0	-0.6	0.6
Hair, dental, shaving, and miscellaneous personal care products <sup>1, 2</sup> .....	0.364	0.2	0.4	-0.4	-0.8	0.4
Cosmetics, perfume, bath, nail preparations and implements <sup>1</sup> .....	0.306	0.2	0.8	0.5	-0.3	0.8
Miscellaneous personal goods <sup>1, 2</sup> .....	0.197	-3.5	0.6	1.9	-0.1	0.6
Stationery, stationery supplies, gift wrap <sup>3</sup> .....		0.9	0.8	2.8	-0.5	1.3
Services less energy services.....	59.526	1.3	0.1	0.2	0.0	0.0
Shelter.....	33.316	1.6	0.2	0.1	0.1	0.1
Rent of shelter <sup>12</sup> .....	32.950	1.6	0.2	0.1	0.1	0.1
Rent of primary residence.....	7.862	2.1	0.1	0.1	0.1	0.1
Lodging away from home <sup>2</sup> .....	0.825	-11.4	1.9	2.8	-0.3	-1.9
Housing at school, excluding board <sup>12</sup> .....	0.118	2.0	0.0	0.1	0.1	0.1
Other lodging away from home including hotels and motels.....	0.707	-13.3	2.2	3.3	-0.4	-2.2
Owners' equivalent rent of residences <sup>12</sup> .....	24.263	2.0	0.1	0.1	0.1	0.1

See footnotes at end of table.

**Table 2. Consumer Price Index for All Urban Consumers (CPI-U): U.S. city average, by detailed expenditure category, January 2021 — Continued**  
 [1982-84=100, unless otherwise noted]

Expenditure category	Relative importance Dec. 2020	Unadjusted percent change		Seasonally adjusted percent change		
		Jan. 2020- Jan. 2021	Dec. 2020- Jan. 2021	Oct. 2020- Nov. 2020	Nov. 2020- Dec. 2020	Dec. 2020- Jan. 2021
Owners' equivalent rent of primary residence <sup>12</sup> ..	23.044	2.0	0.1	0.1	0.1	0.1
Tenants' and household insurance <sup>1, 2</sup> .....	0.366	0.8	0.5	0.3	0.1	0.5
Water and sewer and trash collection services <sup>2</sup> .....	1.107	3.6	0.5	0.2	0.4	0.4
Water and sewerage maintenance.....	0.810	3.3	0.3	0.2	0.3	0.2
Garbage and trash collection <sup>1, 10</sup> .....	0.297	4.4	0.9	0.3	0.6	0.9
Household operations <sup>1, 2</sup> .....	0.899	4.7	0.7	-0.4	2.0	0.7
Domestic services <sup>1, 2</sup> .....	0.302	6.4	1.3	-1.1	3.2	1.3
Gardening and lawncare services <sup>1, 2</sup> .....						
Moving, storage, freight expense <sup>1, 2</sup> .....	0.091	6.7	2.0	0.3	-0.5	2.0
Repair of household items <sup>1, 2</sup> .....	0.116	0.2				
Medical care services.....	7.289	2.9	0.8	-0.1	-0.1	0.5
Professional services.....	3.662	2.9	1.0	0.1	0.1	0.9
Physicians' services <sup>1</sup> .....	1.817	3.4	1.6	0.0	-0.1	1.6
Dental services.....	1.005	3.1	0.3	0.1	0.2	0.0
Eyeglasses and eye care <sup>1, 6</sup> .....	0.365	0.2	-0.3	-0.5	-0.1	-0.3
Services by other medical professionals <sup>1, 6</sup> .....	0.474	2.7	1.6	-0.1	0.0	1.6
Hospital and related services.....	2.419	2.9	1.0	0.3	0.3	0.3
Hospital services <sup>13</sup> .....	2.221	2.7	1.0	0.3	0.3	0.3
Inpatient hospital services <sup>13, 3</sup> .....		1.7	0.8	0.3	0.2	0.1
Outpatient hospital services <sup>3, 6</sup> .....		2.0	1.2	0.3	0.3	0.3
Nursing homes and adult day services <sup>13</sup> .....	0.124	2.8	0.5	0.4	0.2	0.0
Care of invalids and elderly at home <sup>1, 5</sup> .....	0.073	8.1	0.6	0.2	0.2	0.6
Health insurance <sup>1, 5</sup> .....	1.209	2.9	-0.1	-1.0	-1.1	-0.1
Transportation services.....	5.142	-4.1	-0.5	1.3	-0.6	-0.3
Leased cars and trucks <sup>1, 11</sup> .....	0.641	-3.6				
Car and truck rental <sup>2</sup> .....	0.134	3.0	-6.3	2.5	-4.5	-1.1
Motor vehicle maintenance and repair <sup>1</sup> .....	1.099	3.5	0.2	0.4	0.0	0.2
Motor vehicle body work <sup>1</sup> .....	0.059	3.3	0.4	-0.1	-0.1	0.4
Motor vehicle maintenance and servicing <sup>1</sup> .....	0.635	2.6	0.0	0.7	0.1	0.0
Motor vehicle repair <sup>1, 2</sup> .....	0.345	5.3	0.7	0.1	-0.1	0.7
Motor vehicle insurance.....	1.598	-3.7	1.1	-0.2	-0.1	1.6
Motor vehicle fees <sup>1, 2</sup> .....	0.565	0.5	0.8	-0.3	-0.3	0.8
State motor vehicle registration and license fees <sup>1, 2</sup> .....	0.297	1.0	0.2	0.1	0.0	0.2
Parking and other fees <sup>1, 2</sup> .....	0.254	0.0	1.5	-0.7	-0.6	1.5
Parking fees and tolls <sup>2, 3</sup> .....		2.2	2.5	-0.1	-0.2	2.0
Public transportation.....	1.105	-13.9	-1.4	2.5	-1.0	-1.7
Airline fares.....	0.633	-21.3	-2.5	3.7	-2.5	-3.2
Other intercity transportation.....	0.182	2.9	-0.3	3.2	2.1	0.7
Ship fare <sup>1, 2, 3</sup> .....		2.2	1.0	2.6	3.8	1.0
Intracity transportation <sup>1</sup> .....	0.287	-4.4	0.2	-0.2	-0.1	0.2
Intracity mass transit <sup>1, 3, 8</sup> .....		-10.1	-0.6	-0.2	0.0	-0.6
Recreation services <sup>8</sup> .....	3.789	0.3	-0.9	0.5	-0.5	-1.0
Video and audio services <sup>8</sup> .....	1.268	2.7	-0.3	-0.1	0.3	-0.4
Cable and satellite television service <sup>10</sup> .....	1.192	3.3	-0.4	0.2	0.4	-0.4
Video discs and other media, including rental of video <sup>1, 2</sup> .....	0.076	-4.9	0.5	-5.3	-0.2	0.5
Video discs and other media <sup>1, 2, 3</sup> .....		-4.9	0.6	-6.1	-0.7	0.6
Rental of video discs and other media <sup>1, 2, 3</sup> .....		3.3	1.2	-0.6	1.0	1.2
Pet services including veterinary <sup>2</sup> .....	0.560	4.4	1.6	0.2	0.2	1.4
Veterinarian services <sup>2, 3</sup> .....		4.5	1.2	0.2	0.3	1.0
Photographers and photo processing <sup>1, 2</sup> .....	0.044	2.4	0.7	-0.4	-1.9	0.7
Other recreation services <sup>2</sup> .....	1.916	-2.5	-2.1	1.0	-1.2	-2.1

See footnotes at end of table.

**Table 2. Consumer Price Index for All Urban Consumers (CPI-U): U.S. city average, by detailed expenditure category, January 2021 — Continued**  
 [1982-84=100, unless otherwise noted]

Expenditure category	Relative importance Dec. 2020	Unadjusted percent change		Seasonally adjusted percent change		
		Jan. 2020- Jan. 2021	Dec. 2020- Jan. 2021	Oct. 2020- Nov. 2020	Nov. 2020- Dec. 2020	Dec. 2020- Jan. 2021
Club membership for shopping clubs, fraternal, or other organizations, or participant sports fees <sup>1, 2, ..</sup>	0.689	-0.9	-0.1	0.3	0.3	-0.1
Admissions <sup>1</sup> .....	0.688	-6.6	-5.5	1.7	-3.2	-5.5
Admission to movies, theaters, and concerts <sup>1, 2, 3</sup> .....		1.2	0.2	0.8	0.2	0.2
Admission to sporting events <sup>1, 2, 3</sup> .....		-21.4				
Fees for lessons or instructions <sup>1, 6</sup> .....	0.218	5.5	2.0	1.5	-0.1	2.0
Education and communication services <sup>8</sup> .....	6.308	2.0	0.0	0.0	0.1	0.0
Tuition, other school fees, and childcare.....	2.924	1.2	-0.1	0.2	0.2	0.1
College tuition and fees.....	1.569	0.4	-0.2	0.2	0.2	0.0
Elementary and high school tuition and fees.....	0.431	2.3	0.0	0.2	0.3	0.2
Day care and preschool <sup>9</sup> .....	0.768	2.1	0.2	0.2	0.2	0.0
Technical and business school tuition and fees <sup>2</sup> .....	0.037	2.5	0.1	0.2	0.1	0.1
Postage and delivery services <sup>2</sup> .....	0.111	3.8	1.0	0.3	0.2	0.3
Postage.....	0.101	4.0	0.8	0.3	0.1	0.2
Delivery services <sup>2</sup> .....	0.010	2.5	3.5	0.4	1.1	0.6
Telephone services <sup>1, 2</sup> .....	2.369	4.0	0.1	-0.1	-0.1	0.1
Wireless telephone services <sup>1, 2</sup> .....	1.960	4.1	0.0	-0.2	-0.1	0.0
Land-line telephone services <sup>1, 8</sup> .....	0.410	3.6	0.6	0.2	0.1	0.6
Internet services and electronic information providers <sup>2</sup> .....	0.893	-0.4	0.1	-0.1	-0.1	-0.4
Other personal services <sup>1, 8</sup> .....	1.676	2.0	-0.3	-0.3	0.9	-0.3
Personal care services <sup>1</sup> .....	0.694	5.7	0.7	0.1	1.0	0.7
Haircuts and other personal care services <sup>1, 2</sup> .....	0.694	5.7	0.7	0.1	1.0	0.7
Miscellaneous personal services <sup>1</sup> .....	0.981	-0.5	-1.0	-0.6	0.8	-1.0
Legal services <sup>1, 6</sup> .....	0.250	0.7	0.1	0.0	0.0	0.1
Funeral expenses <sup>1, 6</sup> .....	0.140	0.8	0.1	0.1	0.1	0.1
Laundry and dry cleaning services <sup>1, 2</sup> .....	0.220	2.3	0.7	0.3	0.4	0.7
Apparel services other than laundry and dry cleaning <sup>1, 2</sup> .....	0.030	3.6	0.1	-0.6	0.4	0.1
Financial services <sup>6</sup> .....	0.229	-5.7	-4.7	-2.4	2.6	-5.0
Checking account and other bank services <sup>1, 2, 3</sup> .....		-13.1	-11.2	-8.3	8.5	-11.2
Tax return preparation and other accounting fees <sup>1, 2, 3</sup> .....		-0.1	0.3	0.4	-0.6	0.3

<sup>1</sup> Not seasonally adjusted.

<sup>2</sup> Indexes on a December 1997=100 base.

<sup>3</sup> Special index based on a substantially smaller sample.

<sup>4</sup> Indexes on a December 2007=100 base.

<sup>5</sup> Indexes on a December 2005=100 base.

<sup>6</sup> Indexes on a December 1986=100 base.

<sup>7</sup> Indexes on a December 1993=100 base.

<sup>8</sup> Indexes on a December 2009=100 base.

<sup>9</sup> Indexes on a December 1990=100 base.

<sup>10</sup> Indexes on a December 1983=100 base.

<sup>11</sup> Indexes on a December 2001=100 base.

<sup>12</sup> Indexes on a December 1982=100 base.

<sup>13</sup> Indexes on a December 1996=100 base.



**Table 3. Consumer Price Index for All Urban Consumers (CPI-U): U.S. city average, special aggregate indexes, January 2021**

[1982-84=100, unless otherwise noted]

Special aggregate indexes	Relative importance Dec. 2020	Unadjusted indexes			Unadjusted percent change		Seasonally adjusted percent change		
		Jan. 2020	Dec. 2020	Jan. 2021	Jan. 2020- Jan. 2021	Dec. 2020- Jan. 2021	Oct. 2020- Nov. 2020	Nov. 2020- Dec. 2020	Dec. 2020- Jan. 2021
All items less food.....	85.881	257.476	258.959	260.098	1.0	0.4	0.2	0.2	0.3
All items less shelter.....	66.684	235.553	237.289	238.594	1.3	0.5	0.2	0.3	0.3
All items less food and shelter.....	52.565	228.926	229.010	230.398	0.6	0.6	0.3	0.3	0.4
All items less food, shelter, and energy.....	46.410	234.373	236.831	237.329	1.3	0.2	0.2	0.0	0.0
All items less food, shelter, energy, and used cars and trucks.....	43.661	240.588	241.759	242.424	0.8	0.3	0.3	0.0	0.1
All items less medical care.....	91.130	245.789	248.096	249.098	1.3	0.4	0.2	0.3	0.2
All items less energy.....	93.845	264.540	268.613	269.199	1.8	0.2	0.1	0.1	0.0
Commodities.....	37.339	185.055	186.063	187.790	1.5	0.9	0.1	0.6	0.7
Commodities less food, energy, and used cars and trucks.....	17.450	145.098	144.915	145.857	0.5	0.7	0.3	0.2	0.3
Commodities less food.....	23.220	151.711	149.989	151.918	0.1	1.3	0.1	0.7	1.1
Commodities less food and beverages.....	22.182	148.253	146.342	148.303	0.0	1.3	0.1	0.7	1.2
Services.....	62.661	329.987	334.030	334.451	1.4	0.1	0.2	0.0	0.0
Services less rent of shelter <sup>1</sup> .....	29.711	347.578	350.968	351.226	1.0	0.1	0.3	0.0	-0.1
Services less medical care services.....	55.372	313.118	316.606	316.720	1.2	0.0	0.2	0.1	-0.1
Durables.....	10.942	103.896	107.691	107.517	3.5	-0.2	0.1	0.2	-0.5
Nondurables.....	26.397	226.998	225.432	228.543	0.7	1.4	0.0	1.3	0.7
Nondurables less food.....	12.278	198.307	188.305	193.157	-2.6	2.6	0.0	1.6	1.9
Nondurables less food and beverages.....	11.241	194.871	183.826	188.975	-3.0	2.8	0.0	1.8	2.1
Nondurables less food, beverages, and apparel.....	8.577	245.172	231.006	237.386	-3.2	2.8	-0.3	2.4	2.1
Nondurables less food and apparel.....	9.615	244.762	232.599	238.365	-2.6	2.5	-0.2	2.2	1.8
Housing.....	42.385	269.468	273.684	274.336	1.8	0.2	0.3	0.2	0.0
Education and communication <sup>2</sup> .....	6.810	139.132	141.549	141.556	1.7	0.0	0.1	0.1	0.0
Education <sup>2</sup> .....	3.033	268.841	272.437	272.238	1.3	-0.1	0.1	0.2	0.0
Communication <sup>2</sup> .....	3.777	73.790	75.311	75.361	2.1	0.1	0.0	0.0	-0.1
Information and information processing <sup>2</sup> ....	3.666	69.749	71.171	71.199	2.1	0.0	0.0	0.0	-0.1
Information technology, hardware and services <sup>3</sup> .....	1.297	7.375	7.288	7.280	-1.3	-0.1	0.1	0.0	-0.5
Recreation <sup>2</sup> .....	5.797	121.986	122.692	122.140	0.1	-0.4	0.4	-0.3	-0.6
Video and audio <sup>2</sup> .....	1.537	105.680	108.207	107.888	2.1	-0.3	-0.2	0.3	-0.4
Pets, pet products and services <sup>2</sup> .....	1.192	180.442	181.066	182.431	1.1	0.8	0.5	0.4	0.7
Photography <sup>2</sup> .....	0.071	73.348	74.997	75.719	3.2	1.0	0.0	-0.8	0.9
Food and beverages.....	15.157	260.638	269.383	270.260	3.7	0.3	0.0	0.3	0.1
Domestically produced farm food.....	6.489	250.763	259.404	259.851	3.6	0.2	-0.5	0.3	0.2
Other services.....	11.773	364.536	371.076	369.899	1.5	-0.3	0.1	0.0	-0.3
Apparel less footwear.....	2.019	112.770	106.018	109.762	-2.7	3.5	0.5	1.1	2.5
Fuels and utilities.....	4.387	243.739	247.236	248.879	2.1	0.7	0.8	0.3	0.0
Household energy.....	3.280	200.219	202.017	203.476	1.6	0.7	0.9	0.3	-0.1
Medical care.....	8.870	512.149	518.766	522.133	1.9	0.6	-0.2	-0.1	0.4
Transportation.....	15.160	208.284	203.560	205.631	-1.3	1.0	0.3	0.7	1.1
Private transportation.....	14.055	204.277	201.523	203.963	-0.2	1.2	0.1	0.9	1.3
New and used motor vehicles <sup>2</sup> .....	7.525	98.491	103.242	102.492	4.1	-0.7	0.0	-0.4	-1.0
Utilities and public transportation.....	8.908	219.206	220.601	220.629	0.6	0.0	0.6	0.1	-0.4
Household furnishings and operations.....	4.682	124.151	127.367	127.716	2.9	0.3	0.6	0.2	-0.3
Other goods and services.....	3.159	458.336	466.332	467.995	2.1	0.4	0.1	0.5	0.4
Personal care.....	2.551	237.024	239.497	239.535	1.1	0.0	-0.1	0.4	0.0

<sup>1</sup> Indexes on a December 1982=100 base.

<sup>2</sup> Indexes on a December 1997=100 base.

<sup>3</sup> Indexes on a December 1988=100 base.



**Table 4. Consumer Price Index for All Urban Consumers (CPI-U): Selected areas, all items index, January 2021**  
 [1982-84=100, unless otherwise noted]

Area	Pricing Schedule <sup>1</sup>	Percent change to Jan. 2021 from:			Percent change to Dec. 2020 from:		
		Jan. 2020	Nov. 2020	Dec. 2020	Dec. 2019	Oct. 2020	Nov. 2020
U.S. city average.....	M	1.4	0.5	0.4	1.4	0.0	0.1
<b>Region and area size<sup>2</sup></b>							
Northeast.....	M	1.1	0.7	0.4	1.4	0.3	0.2
Northeast - Size Class A.....	M	1.1	0.7	0.4	1.4	0.2	0.3
Northeast - Size Class B/C <sup>3</sup> .....	M	1.3	0.7	0.5	1.5	0.5	0.2
New England <sup>4</sup> .....	M	0.6	0.8	0.5	0.8	0.7	0.3
Middle Atlantic <sup>4</sup> .....	M	1.3	0.6	0.4	1.6	0.2	0.2
Midwest.....	M	1.2	0.5	0.5	1.1	-0.1	0.1
Midwest - Size Class A.....	M	0.7	0.2	0.1	1.0	-0.3	0.0
Midwest - Size Class B/C <sup>3</sup> .....	M	1.5	0.7	0.6	1.2	0.0	0.1
East North Central <sup>4</sup> .....	M	0.9	0.5	0.5	0.8	-0.3	0.0
West North Central <sup>4</sup> .....	M	2.0	0.4	0.3	1.8	0.3	0.1
South.....	M	1.6	0.7	0.5	1.4	0.1	0.2
South - Size Class A.....	M	1.5	0.6	0.5	1.2	0.0	0.1
South - Size Class B/C <sup>3</sup> .....	M	1.7	0.8	0.6	1.5	0.1	0.2
South Atlantic <sup>4</sup> .....	M	1.8	0.6	0.5	1.6	0.0	0.1
East South Central <sup>4</sup> .....	M	2.2	1.3	0.9	1.7	0.3	0.5
West South Central <sup>4</sup> .....	M	1.0	0.7	0.4	0.8	0.1	0.3
West.....	M	1.4	0.1	0.2	1.5	-0.1	-0.1
West - Size Class A.....	M	1.2	0.2	0.2	1.5	0.0	-0.1
West - Size Class B/C <sup>3</sup> .....	M	1.6	0.1	0.2	1.5	-0.2	-0.1
Mountain <sup>4</sup> .....	M	1.2	0.1	0.3	1.0	-0.2	-0.2
Pacific <sup>4</sup> .....	M	1.5	0.1	0.2	1.6	-0.1	-0.1
<b>Size classes</b>							
Size Class A <sup>5</sup> .....	M	1.2	0.4	0.3	1.3	0.0	0.1
Size Class B/C <sup>3</sup> .....	M	1.6	0.6	0.5	1.4	0.1	0.1
<b>Selected local areas</b>							
Chicago-Naperville-Elgin, IL-IN-WI.....	M	0.7	0.6	0.7	0.9	-0.5	-0.2
Los Angeles-Long Beach-Anaheim, CA.....	M	0.9	0.0	0.2	1.5	-0.1	-0.2
New York-Newark-Jersey City, NY-NJ-PA.....	M	1.2	0.8	0.4	1.6	0.1	0.4
Atlanta-Sandy Springs-Roswell, GA.....	2				1.6	0.1	
Baltimore-Columbia-Towson, MD <sup>6</sup> .....	2				1.4	0.2	
Detroit-Warren-Dearborn, MI.....	2				0.7	-0.3	
Houston-The Woodlands-Sugar Land, TX.....	2				0.7	0.2	
Miami-Fort Lauderdale-West Palm Beach, FL.....	2				1.1	-0.2	
Philadelphia-Camden-Wilmington, PA-NJ-DE-MD.....	2				1.1	0.0	
Phoenix-Mesa-Scottsdale, AZ <sup>7</sup> .....	2				0.5	-0.8	
San Francisco-Oakland-Hayward, CA.....	2				2.0	0.4	
Seattle-Tacoma-Bellevue, WA.....	2				1.4	-0.4	
St. Louis, MO-IL.....	2				1.2	0.1	
Urban Alaska.....	2				0.3	-0.5	
Boston-Cambridge-Newton, MA-NH.....	1	0.5	0.7				
Dallas-Fort Worth-Arlington, TX.....	1	1.5	1.2				
Denver-Aurora-Lakewood, CO.....	1	0.4	0.1				
Minneapolis-St.Paul-Bloomington, MN-WI.....	1	1.6	0.4				
Riverside-San Bernardino-Ontario, CA <sup>4</sup> .....	1	2.2	0.9				
San Diego-Carlsbad, CA.....	1	1.7	0.4				
Tampa-St. Petersburg-Clearwater, FL <sup>8</sup> .....	1	3.4	0.9				
Urban Hawaii.....	1	1.4	0.3				
Washington-Arlington-Alexandria, DC-VA-MD-WV <sup>6</sup> .....	1	1.5	0.7				

<sup>1</sup> Foods, fuels, and several other items are priced every month in all areas. Most other goods and services are priced as indicated: M - Every month. 1 - January, March, May, July, September, and November. 2 - February, April, June, August, October, and December.

<sup>2</sup> Regions defined as the four Census regions.

<sup>3</sup> Indexes on a December 1996=100 base.

<sup>4</sup> Indexes on a December 2017=100 base.

<sup>5</sup> Indexes on a December 1986=100 base.

<sup>6</sup> 1998 - 2017 indexes based on substantially smaller sample.

<sup>7</sup> Indexes on a December 2001=100 base.

<sup>8</sup> Indexes on a 1987=100 base.

NOTE: Local area indexes are byproducts of the national CPI program. Each local index has a smaller sample size than the national index and is, therefore, subject to substantially more sampling and other measurement error. As a result, local area indexes show greater volatility than the national index, although their long-term trends are similar. Therefore, the Bureau of Labor Statistics strongly urges users to consider adopting the national average CPI for use in their escalator clauses.

**Table 5. Chained Consumer Price Index for All Urban Consumers (C-CPI-U) and the Consumer Price Index for All Urban Consumers (CPI-U): U.S. city average, all items index, January 2021**  
 [Percent changes]

Month Year	Unadjusted 1-month percent change		Unadjusted 12-month percent change	
	C-CPI-U <sup>1</sup>	CPI-U	C-CPI-U <sup>1</sup>	CPI-U
December 2008.....			0.2	0.1
December 2009.....			2.5	2.7
December 2010.....			1.3	1.5
December 2011.....			2.9	3.0
December 2012.....			1.5	1.7
December 2013.....			1.3	1.5
December 2014.....			0.5	0.8
December 2015.....			0.4	0.7
December 2016.....			1.8	2.1
December 2017.....			1.7	2.1
December 2018.....			1.5	1.9
January 2019.....	0.2	0.2	1.3	1.6
February 2019.....	0.4	0.4	1.3	1.5
March 2019.....	0.5	0.6	1.5	1.9
April 2019.....	0.4	0.5	1.6	2.0
May 2019.....	0.2	0.2	1.4	1.8
June 2019.....	0.0	0.0	1.3	1.6
July 2019.....	0.1	0.2	1.5	1.8
August 2019.....	0.0	0.0	1.5	1.7
September 2019.....	0.0	0.1	1.4	1.7
October 2019.....	0.1	0.2	1.4	1.8
November 2019.....	-0.1	-0.1	1.6	2.1
December 2019.....	-0.2	-0.1	1.8	2.3
January 2020.....	0.4	0.4	2.0	2.5
February 2020.....	0.3	0.3	1.8	2.3
March 2020.....	-0.2	-0.2	1.1	1.5
April 2020.....	-0.8	-0.7	-0.1	0.3
May 2020.....	0.0	0.0	-0.3	0.1
June 2020.....	0.6	0.5	0.2	0.6
July 2020.....	0.5	0.5	0.6	1.0
August 2020.....	0.3	0.3	1.0	1.3
September 2020.....	0.2	0.1	1.1	1.4
October 2020.....	0.0	0.0	1.0	1.2
November 2020.....	-0.1	-0.1	1.0	1.2
December 2020.....	0.1	0.1	1.2	1.4
January 2021.....	0.4	0.4	1.3	1.4

<sup>1</sup> The C-CPI-U is designed to be a closer approximation to a cost-of-living index in that it, in its final form, accounts for any substitution that consumers make across item categories in response to changes in relative prices. Since the expenditure data required for the calculation of the C-CPI-U are available only with a time lag, the C-CPI-U is issued first in preliminary form using the latest available expenditure data at that time and is subject to four revisions.

Indexes are issued as initial estimates. Indexes are revised each quarter with the publication of January, April, July, and October data as updated expenditure estimates become available. The C-CPI-U indexes are updated quarterly until they become final. January-March indexes are final in January of the following year; April-June indexes are final in April of the following year; July-September indexes are final in July of the following year; October-December indexes are final in October of the following year.

**Table 6. Consumer Price Index for All Urban Consumers (CPI-U): U.S. city average, by expenditure category, January 2021, 1-month analysis table**  
 [1982-84=100, unless otherwise noted]

Expenditure category	Relative importance Dec. 2020	One Month				
		Seasonally adjusted percent change Dec. 2020-Jan. 2021	Seasonally adjusted effect on All Items Dec. 2020-Jan. 2021 <sup>1</sup>	Standard error, median price change <sup>2</sup>	Largest (L) or Smallest (S) seasonally adjusted change since: <sup>3</sup>	
					Date	Percent change
All items.....	100.000	0.3		0.04	L-Aug.2020	0.4
Food.....	14.119	0.1	0.012	0.10	S-Nov.2020	0.0
Food at home.....	7.772	-0.1	-0.010	0.15	S-Nov.2020	-0.2
Cereals and bakery products.....	1.001	-0.8	-0.008	0.40	S-Mar.2016	-0.8
Cereals and cereal products.....	0.308	-0.5	-0.002	0.50	S-Aug.2020	-0.7
Flour and prepared flour mixes.....	0.041	-1.6	-0.001	0.83	S-Oct.2018	-2.4
Breakfast cereal <sup>4</sup> .....	0.142	-0.7	-0.001	0.92	S-Aug.2020	-2.0
Rice, pasta, cornmeal.....	0.124	-0.8	-0.001	0.78	S-Jun.2020	-1.2
Rice <sup>4, 5, 6</sup> .....		-0.4		0.68	S-Oct.2020	-0.6
Bakery products <sup>4</sup> .....	0.693	-0.4	-0.003	0.52	S-Nov.2020	-0.8
Bread <sup>4, 5</sup> .....	0.200	-0.8	-0.002	0.83	S-May 2020	-1.8
White bread <sup>4, 6</sup> .....		-1.3		0.94	S-May 2020	-2.2
Bread other than white <sup>4, 6</sup> .....		-0.5		1.04	S-Nov.2020	-0.6
Fresh biscuits, rolls, muffins <sup>5</sup> .....	0.101	0.1	0.000	1.35	S-Nov.2020	-0.5
Cakes, cupcakes, and cookies <sup>4</sup> .....	0.178	0.2	0.000	0.86	S-Nov.2020	-0.5
Cookies <sup>4, 6</sup> .....		-0.9		0.94	S-Nov.2020	-1.7
Fresh cakes and cupcakes <sup>4, 6</sup> .....		2.0		1.62	L-Jun.2020	3.5
Other bakery products.....	0.214	-2.5	-0.005	0.82	S-EVER	-
Fresh sweetrolls, coffeecakes, doughnuts <sup>4, 6</sup> .....		-1.4		0.76	S-Sep.2020	-2.0
Crackers, bread, and cracker products <sup>6</sup> .....		-0.9		1.24	L-Nov.2020	2.1
Frozen and refrigerated bakery products, pies, tarts, turnovers <sup>4, 6</sup> .....		-3.5		1.13	S-Nov.2020	-3.4
Meats, poultry, fish, and eggs.....	1.736	0.5	0.009	0.34	L-Oct.2020	0.5
Meats, poultry, and fish.....	1.637	0.5	0.008	0.36	L-Jun.2020	2.2
Meats.....	1.026	0.6	0.006	0.44	L-Oct.2020	0.8
Beef and veal.....	0.471	1.1	0.005	0.69	L-Jun.2020	4.6
Uncooked ground beef <sup>4</sup> .....	0.173	-0.2	0.000	0.98	L-Nov.2020	0.4
Uncooked beef roasts <sup>4, 5</sup> .....	0.073	0.8	0.001	1.73	L-Jun.2020	1.3
Uncooked beef steaks <sup>5</sup> .....	0.180	2.6	0.005	0.93	L-Jun.2020	5.3
Uncooked other beef and veal <sup>4, 5</sup> .....	0.044	0.7	0.000	1.14	S-Nov.2020	0.5
Pork.....	0.322	0.3	0.001	0.80	S-Nov.2020	-0.1
Bacon, breakfast sausage, and related products <sup>5</sup> .....	0.134	-1.7	-0.002	0.96	S-Feb.2016	-1.8
Bacon and related products <sup>6</sup> .....		-1.9		1.05	S-Aug.2020	-1.9
Breakfast sausage and related products <sup>5, 6</sup> .....		-1.9		1.32	S-Dec.2018	-2.4
Ham.....	0.062	3.1	0.002	1.91	L-Mar.2019	3.2
Ham, excluding canned <sup>6</sup> .....		3.9		2.36	L-Mar.2019	3.3
Pork chops <sup>4</sup> .....	0.052	-2.4	-0.001	1.70	S-Oct.2020	-4.0
Other pork including roasts, steaks, and ribs <sup>5</sup> .....	0.075	2.4	0.002	1.96	L-Oct.2020	4.4
Other meats.....	0.233	0.1	0.000	0.60	-	-
Frankfurters <sup>6</sup> .....		0.0		1.75	S-Nov.2020	-3.5
Lunchmeats <sup>4, 5, 6</sup> .....		0.3		0.58	S-Nov.2020	-0.3
Poultry <sup>4</sup> .....	0.333	0.5	0.002	0.73	L-May 2020	2.2
Chicken <sup>4, 5</sup> .....	0.273	-0.2	-0.001	0.78	L-Nov.2020	1.1
Fresh whole chicken <sup>4, 6</sup> .....		-0.3		1.35	L-Nov.2020	1.5
Fresh and frozen chicken parts <sup>4, 6</sup> .....		-0.3		0.95	L-Nov.2020	1.1
Other uncooked poultry including turkey <sup>5</sup> .....	0.060	2.7	0.002	1.27	L-Sep.2020	3.5
Fish and seafood.....	0.278	-0.2	0.000	0.54	S-Jun.2020	-0.7
Fresh fish and seafood <sup>5</sup> .....	0.140	-0.8	-0.001	0.82	S-Aug.2020	-1.4
Processed fish and seafood <sup>5</sup> .....	0.138	0.6	0.001	0.80	L-Aug.2020	1.0
Shelf stable fish and seafood <sup>6</sup> .....		0.9		1.06	L-Nov.2020	1.5
Frozen fish and seafood <sup>6</sup> .....		0.3		0.82	L-Aug.2020	1.2

See footnotes at end of table.

**Table 6. Consumer Price Index for All Urban Consumers (CPI-U): U.S. city average, by expenditure category, January 2021, 1-month analysis table — Continued**  
 [1982-84=100, unless otherwise noted]

Expenditure category	Relative importance Dec. 2020	One Month				
		Seasonally adjusted percent change Dec. 2020-Jan. 2021	Seasonally adjusted effect on All Items Dec. 2020-Jan. 2021 <sup>1</sup>	Standard error, median price change <sup>2</sup>	Largest (L) or Smallest (S) seasonally adjusted change since: <sup>3</sup>	
					Date	Percent change
Eggs.....	0.099	1.1	0.001	0.89	L-Apr.2020	14.3
Dairy and related products.....	0.792	-0.4	-0.003	0.36	S-Oct.2020	-0.9
Milk <sup>5</sup> .....	0.218	-1.2	-0.003	0.66	S-Oct.2020	-2.4
Fresh whole milk <sup>6</sup> .....		-1.2		0.76	S-Oct.2020	-2.8
Fresh milk other than whole <sup>5, 6</sup> .....		-0.8		0.80	S-Oct.2020	-2.4
Cheese and related products <sup>4</sup> .....	0.266	0.4	0.001	0.54	—	—
Ice cream and related products.....	0.111	-0.3	0.000	0.95	S-Oct.2020	-1.4
Other dairy and related products <sup>4, 5</sup> .....	0.197	0.3	0.001	0.71	S-Nov.2020	-0.3
Fruits and vegetables.....	1.341	-0.2	-0.003	0.36	—	—
Fresh fruits and vegetables.....	1.053	-0.1	-0.001	0.46	L-Nov.2020	0.0
Fresh fruits.....	0.538	1.2	0.006	0.72	L-Dec.2018	1.5
Apples.....	0.073	0.7	0.001	1.36	—	—
Bananas <sup>4</sup> .....	0.074	3.8	0.003	0.84	L-Apr.2008	5.7
Citrus fruits <sup>5</sup> .....	0.136	3.4	0.005	0.97	L-Nov.2020	3.4
Oranges, including tangerines <sup>6</sup> .....		1.4		1.48	L-Nov.2020	3.6
Other fresh fruits <sup>5</sup> .....	0.254	-1.9	-0.005	1.46	S-Sep.2020	-2.9
Fresh vegetables.....	0.516	-1.5	-0.008	0.50	S-Jan.2017	-2.2
Potatoes.....	0.075	1.7	0.001	1.27	L-Mar.2020	2.2
Lettuce <sup>4</sup> .....	0.068	-3.8	-0.003	1.17	S-May 2019	-5.8
Tomatoes.....	0.082	-0.9	-0.001	1.35	L-Oct.2020	1.3
Other fresh vegetables.....	0.290	-1.8	-0.005	0.64	S-Mar.2020	-1.8
Processed fruits and vegetables <sup>5</sup> .....	0.288	-0.7	-0.002	0.52	S-Apr.2019	-0.8
Canned fruits and vegetables <sup>5</sup> .....	0.150	-0.5	-0.001	0.67	S-Aug.2020	-1.0
Canned fruits <sup>5, 6</sup> .....		-1.7		0.80	S-Apr.2019	-3.2
Canned vegetables <sup>5, 6</sup> .....		0.0		0.85	S-Aug.2020	-0.7
Frozen fruits and vegetables <sup>5</sup> .....	0.086	0.1	0.000	0.93	S-Nov.2020	-0.5
Frozen vegetables <sup>6</sup> .....		-0.2		1.21	S-Dec.2019	-1.0
Other processed fruits and vegetables including dried <sup>5</sup> .....	0.052	-1.1	-0.001	1.19	S-Aug.2019	-1.6
Dried beans, peas, and lentils <sup>4, 5, 6</sup> .....		-0.6		1.72	S-Nov.2020	-1.0
Nonalcoholic beverages and beverage materials.....	0.930	0.1	0.001	0.44	S-Nov.2020	-0.6
Juices and nonalcoholic drinks <sup>5</sup> .....	0.666	-0.1	0.000	0.51	S-Nov.2020	-0.6
Carbonated drinks.....	0.278	0.8	0.002	1.03	S-Nov.2020	-0.7
Frozen noncarbonated juices and drinks <sup>4, 5</sup> .....	0.006	0.0	0.000	0.72	S-Nov.2020	-0.9
Nonfrozen noncarbonated juices and drinks <sup>5</sup> .....	0.382	-0.6	-0.002	0.60	S-Apr.2019	-0.7
Beverage materials including coffee and tea <sup>5</sup> .....	0.264	0.1	0.000	0.66	S-Nov.2020	-0.6
Coffee.....	0.169	0.8	0.001	0.87	S-Nov.2020	-1.5
Roasted coffee <sup>6</sup> .....		0.6		0.97	S-Nov.2020	-1.0
Instant coffee <sup>4, 6</sup> .....		-0.6		1.47	S-Nov.2020	-5.2
Other beverage materials including tea <sup>4, 5</sup> .....	0.095	-0.2	0.000	0.81	S-Oct.2020	-1.2
Other food at home.....	1.972	-0.3	-0.005	0.33	S-Nov.2020	-0.5
Sugar and sweets <sup>4</sup> .....	0.270	0.8	0.002	0.64	L-Aug.2020	0.8
Sugar and sugar substitutes.....	0.037	-2.5	-0.001	0.90	S-EVER	—
Candy and chewing gum <sup>4, 5</sup> .....	0.180	0.9	0.002	0.87	L-Sep.2020	1.5
Other sweets <sup>5</sup> .....	0.053	-1.8	-0.001	0.92	S-Apr.2019	-2.0
Fats and oils.....	0.212	0.4	0.001	0.64	—	—
Butter and margarine <sup>5</sup> .....	0.063	-1.3	-0.001	0.98	S-Nov.2020	-2.0
Butter <sup>6</sup> .....		-0.4		1.18	S-Nov.2020	-2.1
Margarine <sup>6</sup> .....		-2.9		1.33	S-Mar.2016	-3.0
Salad dressing <sup>5</sup> .....	0.051	0.7	0.000	1.06	L-Nov.2020	1.2
Other fats and oils including peanut butter <sup>5</sup> .....	0.098	1.0	0.001	1.14	L-Jun.2020	1.0
Peanut butter <sup>4, 5, 6</sup> .....						
Other foods.....	1.489	-0.6	-0.009	0.37	S-Nov.2020	-0.7

See footnotes at end of table.

**Table 6. Consumer Price Index for All Urban Consumers (CPI-U): U.S. city average, by expenditure category, January 2021, 1-month analysis table — Continued**

[1982-84=100, unless otherwise noted]

Expenditure category	Relative importance Dec. 2020	One Month				
		Seasonally adjusted percent change Dec. 2020-Jan. 2021	Seasonally adjusted effect on All Items Dec. 2020-Jan. 2021 <sup>1</sup>	Standard error, median price change <sup>2</sup>	Largest (L) or Smallest (S) seasonally adjusted change since: <sup>3</sup>	
					Date	Percent change
Soups.....	0.089	-3.0	-0.003	1.17	S-Oct.2007	-3.3
Frozen and freeze dried prepared foods.....	0.259	-0.7	-0.002	0.67	S-Sep.2020	-0.7
Snacks <sup>4</sup> .....	0.340	-1.8	-0.006	0.84	S-Dec.2018	-1.9
Spices, seasonings, condiments, sauces.....	0.290	-0.4	-0.001	0.51	S-Sep.2020	-0.6
Salt and other seasonings and spices <sup>5, 6</sup> .....		-1.9		1.05	S-Jun.2006	-2.2
Olives, pickles, relishes <sup>4, 5, 6</sup> .....		-0.5		0.89	S-May 2020	-2.4
Sauces and gravies <sup>5, 6</sup> .....		1.6		0.77	L-Aug.2020	0.8
Other condiments <sup>6</sup> .....		0.1		1.05	L-Oct.2020	2.2
Baby food <sup>4, 5</sup> .....	0.042	0.2	0.000	0.88	L-Nov.2020	1.4
Other miscellaneous foods <sup>5</sup> .....	0.469	1.1	0.005	0.63	L-Apr.2020	2.4
Prepared salads <sup>7, 6</sup> .....		0.7		1.72	—	—
Food away from home <sup>4</sup> .....	6.347	0.3	0.021	0.10	S-Nov.2020	0.1
Full service meals and snacks <sup>4, 5</sup> .....	3.176	0.3	0.008	0.10	—	—
Limited service meals and snacks <sup>4, 5</sup> .....	2.787	0.6	0.018	0.14	L-Sep.2020	0.9
Food at employee sites and schools <sup>4, 5</sup> .....	0.130	-4.7	-0.006	0.27	S-Nov.2020	-6.3
Food at elementary and secondary schools <sup>4, 8, 6</sup> .....		-9.0		0.06	S-EVER	—
Food from vending machines and mobile vendors <sup>4, 5</sup> .....	0.080	1.8	0.001	0.11	L-Nov.2008	1.8
Other food away from home <sup>4, 5</sup> .....	0.174	0.0	0.000	0.14	S-Oct.2020	-0.7
Energy.....	6.155	3.5	0.220	0.16	L-Jun.2020	4.4
Energy commodities.....	3.020	7.3	0.229	0.20	L-Jun.2020	9.9
Fuel oil and other fuels.....	0.145	4.4	0.006	0.60	L-Jun.2020	4.8
Fuel oil <sup>4</sup> .....	0.084	5.4	0.005	0.94	S-Nov.2020	3.3
Propane, kerosene, and firewood <sup>9</sup> .....	0.061	6.8	0.004	0.56	L-Feb.2014	11.6
Motor fuel.....	2.875	7.4	0.222	0.20	L-Jun.2020	10.1
Gasoline (all types).....	2.811	7.4	0.218	0.20	L-Jun.2020	10.4
Gasoline, unleaded regular <sup>6</sup> .....		7.1		0.45	L-Jun.2020	10.4
Gasoline, unleaded midgrade <sup>10, 6</sup> .....		5.5		0.46	L-Jun.2020	8.3
Gasoline, unleaded premium <sup>6</sup> .....		5.1		0.40	L-Jun.2020	7.0
Other motor fuels <sup>4, 5</sup> .....	0.064	4.7	0.003	0.37	L-Sep.2017	8.0
Energy services.....	3.135	-0.3	-0.009	0.18	S-Jun.2019	-0.3
Electricity.....	2.425	-0.2	-0.006	0.25	S-Aug.2020	-0.2
Utility (piped) gas service.....	0.710	-0.4	-0.003	0.34	—	—
All items less food and energy.....	79.726	0.0	0.025	0.04	—	—
Commodities less food and energy commodities.....	20.200	0.1	0.028	0.10	—	—
Household furnishings and supplies <sup>11</sup> .....	3.783	-0.5	-0.020	0.23	S-May 2018	-0.6
Window and floor coverings and other linens <sup>4, 5</sup> .....	0.271	3.0	0.008	0.96	L-Jan.2020	4.4
Floor coverings <sup>4, 5</sup> .....	0.062	0.5	0.000	0.74	L-Aug.2020	1.1
Window coverings <sup>4, 5</sup> .....	0.058	-1.0	-0.001	1.37	L-Oct.2020	0.4
Other linens <sup>4, 5</sup> .....	0.151	5.7	0.009	1.52	L-Jan.2020	6.6
Furniture and bedding <sup>4</sup> .....	0.944	-0.5	-0.004	0.55	S-Jul.2020	-0.8
Bedroom furniture <sup>4</sup> .....	0.329	-1.1	-0.003	0.68	S-Jul.2020	-1.2
Living room, kitchen, and dining room furniture <sup>4, 5</sup> .....	0.454	0.0	0.000	0.90	S-Oct.2020	-0.4
Other furniture <sup>5</sup> .....	0.152	-1.7	-0.003	0.70	S-Aug.2019	-3.0
Appliances <sup>5</sup> .....	0.220	-1.1	-0.002	0.72	S-Sep.2020	-1.5
Major appliances <sup>5</sup> .....	0.078	-1.3	-0.001	0.93	L-Nov.2020	2.8
Laundry equipment <sup>4, 6</sup> .....		3.5		1.73	L-Jul.2020	8.7
Other appliances <sup>4, 5</sup> .....	0.140	-0.6	-0.001	0.92	S-Oct.2020	-0.9
Other household equipment and furnishings <sup>4, 5</sup> .....	0.535	2.3	0.012	0.55	L-Oct.2004	4.5
Clocks, lamps, and decorator items <sup>4</sup> .....	0.313	2.2	0.007	0.89	L-Apr.2020	3.1
Indoor plants and flowers <sup>12</sup> .....	0.093	2.9	0.003	0.80	L-Apr.1998	2.9
Dishes and flatware <sup>4, 5</sup> .....	0.052	3.0	0.002	1.49	L-Jan.2020	5.1
Nonelectric cookware and tableware <sup>4, 5</sup> .....	0.077	2.5	0.002	0.81	L-Jan.2020	3.0

See footnotes at end of table.

**Table 6. Consumer Price Index for All Urban Consumers (CPI-U): U.S. city average, by expenditure category, January 2021, 1-month analysis table — Continued**  
 [1982-84=100, unless otherwise noted]

Expenditure category	Relative importance Dec. 2020	One Month				
		Seasonally adjusted percent change Dec. 2020-Jan. 2021	Seasonally adjusted effect on All Items Dec. 2020-Jan. 2021 <sup>1</sup>	Standard error, median price change <sup>2</sup>	Largest (L) or Smallest (S) seasonally adjusted change since: <sup>3</sup>	
					Date	Percent change
Tools, hardware, outdoor equipment and supplies <sup>5</sup> . . .	0.892	-1.8	-0.016	0.40	S-EVER	-
Tools, hardware and supplies <sup>4, 5</sup> . . . . .	0.243	0.1	0.000	0.57	-	-
Outdoor equipment and supplies <sup>5</sup> . . . . .	0.459	-2.5	-0.011	0.57	S-EVER	-
Housekeeping supplies <sup>4</sup> . . . . .	0.922	0.2	0.002	0.39	L-Nov.2020	1.2
Household cleaning products <sup>4, 5</sup> . . . . .	0.367	0.4	0.002	0.57	S-Nov.2020	0.1
Household paper products <sup>4, 5</sup> . . . . .	0.235	0.5	0.001	0.74	L-Nov.2020	4.0
Miscellaneous household products <sup>4, 5</sup> . . . . .	0.320	-0.2	0.000	0.64	L-Nov.2020	0.3
Apparel . . . . .	2.663	2.2	0.060	0.41	L-EVER	-
Men's and boys' apparel . . . . .	0.666	1.4	0.010	0.69	L-Nov.2020	1.6
Men's apparel . . . . .	0.532	1.1	0.006	0.76	S-Oct.2020	-2.2
Men's suits, sport coats, and outerwear . . . . .	0.088	-0.8	-0.001	2.01	S-Oct.2020	-5.5
Men's underwear, nightwear, swimwear, and accessories <sup>4</sup> . . . . .	0.158	0.3	0.000	1.25	L-Sep.2020	3.1
Men's shirts and sweaters <sup>5</sup> . . . . .	0.150	0.8	0.001	1.48	S-Oct.2020	-2.3
Men's pants and shorts . . . . .	0.130	5.3	0.007	1.52	L-Oct.2013	10.5
Boys' apparel . . . . .	0.134	3.4	0.005	1.38	L-Jul.2020	4.8
Women's and girls' apparel . . . . .	1.075	3.1	0.034	0.74	L-EVER	-
Women's apparel . . . . .	0.875	2.4	0.022	0.75	L-Jan.2018	2.5
Women's outerwear . . . . .	0.062	2.1	0.001	2.12	L-Feb.2020	2.4
Women's dresses . . . . .	0.092	-1.3	-0.001	1.93	S-May 2020	-9.4
Women's suits and separates <sup>5</sup> . . . . .	0.446	5.5	0.026	1.09	L-EVER	-
Women's underwear, nightwear, swimwear, and accessories <sup>5</sup> . . . . .	0.265	0.2	0.001	1.11	L-Nov.2020	0.9
Girls' apparel . . . . .	0.200	6.2	0.012	1.99	L-EVER	-
Footwear . . . . .	0.644	1.4	0.009	0.57	L-Jan.2020	1.4
Men's footwear <sup>4</sup> . . . . .	0.224	3.8	0.008	0.81	L-EVER	-
Boys' and girls' footwear . . . . .	0.136	0.5	0.001	1.00	L-Nov.2020	4.6
Women's footwear . . . . .	0.284	-0.7	-0.002	0.82	S-May 2020	-1.7
Infants' and toddlers' apparel . . . . .	0.125	0.5	0.001	1.47	L-Nov.2020	3.1
Jewelry and watches <sup>9</sup> . . . . .	0.153	4.1	0.007	1.26	L-Feb.2016	4.1
Watches <sup>4, 9</sup> . . . . .	0.040	0.3	0.000	1.41	S-Nov.2020	-0.9
Jewelry <sup>9</sup> . . . . .	0.114	6.0	0.007	1.67	L-EVER	-
Transportation commodities less motor fuel <sup>11</sup> . . . . .	7.144	-0.6	-0.045	0.10	S-Nov.2020	-0.6
New vehicles . . . . .	3.756	-0.5	-0.019	0.17	S-Jul.2017	-0.5
New cars and trucks <sup>5, 6</sup> . . . . .		-0.6		0.21	S-Jul.2017	-0.5
New cars <sup>6</sup> . . . . .		-0.5		0.24	S-Jul.2017	-0.7
New trucks <sup>13, 6</sup> . . . . .		-0.6		0.21	S-Mar.2020	-0.5
Used cars and trucks . . . . .	2.750	-0.9	-0.025	0.02	-	-
Motor vehicle parts and equipment <sup>4</sup> . . . . .	0.393	0.6	0.002	0.29	-	-
Tires <sup>4</sup> . . . . .	0.249	1.0	0.002	0.33	L-Dec.2018	1.0
Vehicle accessories other than tires <sup>4, 5</sup> . . . . .	0.144	-0.1	0.000	0.56	S-Oct.2020	-1.4
Vehicle parts and equipment other than tires <sup>4, 6</sup> . . . . .		0.2		0.74	L-Sep.2020	1.9
Motor oil, coolant, and fluids <sup>4, 6</sup> . . . . .		-0.3		1.50	S-Oct.2020	-2.0
Medical care commodities <sup>4</sup> . . . . .	1.580	-0.1	-0.002	0.19	L-Aug.2020	0.3
Medicinal drugs <sup>11</sup> . . . . .	1.515	-0.6	-0.010	0.20	S-Jan.2020	-0.7
Prescription drugs . . . . .	1.141	-0.5	-0.006	0.17	S-Jan.2020	-0.6
Nonprescription drugs <sup>4, 11</sup> . . . . .	0.374	-1.1	-0.004	0.66	S-Oct.2020	-1.3
Medical equipment and supplies <sup>4, 11</sup> . . . . .	0.066	3.5	0.002	0.54	L-EVER	-
Recreation commodities <sup>11</sup> . . . . .	2.008	0.1	0.003	0.22	S-Oct.2020	-0.1
Video and audio products <sup>11</sup> . . . . .	0.269	-0.7	-0.002	0.42	S-Jan.2020	-0.7
Televisions . . . . .	0.091	0.7	0.001	0.57	-	-
Other video equipment <sup>5</sup> . . . . .	0.042	2.2	0.001	0.93	L-Aug.2020	2.9
Audio equipment <sup>4</sup> . . . . .	0.079	-3.3	-0.003	1.00	S-Dec.2017	-5.4

See footnotes at end of table.



**Table 6. Consumer Price Index for All Urban Consumers (CPI-U): U.S. city average, by expenditure category, January 2021, 1-month analysis table — Continued**  
 [1982-84=100, unless otherwise noted]

Expenditure category	Relative importance Dec. 2020	One Month				
		Seasonally adjusted percent change Dec. 2020-Jan. 2021	Seasonally adjusted effect on All Items Dec. 2020-Jan. 2021 <sup>1</sup>	Standard error, median price change <sup>2</sup>	Largest (L) or Smallest (S) seasonally adjusted change since: <sup>3</sup>	
					Date	Percent change
Recorded music and music subscriptions <sup>4, 5</sup> .....	0.045	-1.5	-0.001	0.67	S-Sep.2019	-3.6
Pets and pet products <sup>4</sup> .....	0.632	0.0	0.000	0.38	S-Oct.2020	-0.8
Pet food <sup>4, 5, 6</sup> .....		-0.1		0.45	S-Oct.2020	-0.4
Purchase of pets, pet supplies, accessories <sup>4, 5, 6</sup> .....		0.2		0.64	S-Oct.2020	-1.4
Sporting goods <sup>4</sup> .....	0.604	0.7	0.004	0.53	—	—
Sports vehicles including bicycles <sup>4</sup> .....	0.361	0.3	0.001	0.69	L-Nov.2020	0.5
Sports equipment <sup>4</sup> .....	0.232	1.3	0.003	0.53	S-Nov.2020	0.7
Photographic equipment and supplies.....	0.026	1.2	0.000	0.78	—	—
Photographic equipment <sup>5, 6</sup> .....		2.0		0.98	S-Nov.2020	1.3
Recreational reading materials <sup>4</sup> .....	0.120	1.0	0.001	0.83	L-Oct.2020	1.1
Newspapers and magazines <sup>4, 5</sup> .....	0.068	2.1	0.001	0.95	L-Jan.2020	2.4
Recreational books <sup>4, 5</sup> .....	0.050	-0.4	0.000	1.40	S-Nov.2020	-1.0
Other recreational goods <sup>5</sup> .....	0.356	-0.4	-0.002	0.56	L-Nov.2020	-0.3
Toys.....	0.274	-0.6	-0.002	0.64	S-Jun.2020	-0.7
Toys, games, hobbies and playground equipment <sup>7, 6</sup> .....		-0.9		0.95	S-Nov.2020	-0.6
Sewing machines, fabric and supplies <sup>4, 5</sup> .....	0.020	2.0	0.000	1.79	L-Aug.2020	15.0
Music instruments and accessories <sup>4, 5</sup> .....	0.046	-0.7	0.000	0.75	L-Oct.2020	-0.2
Education and communication commodities <sup>11</sup> .....	0.501	-0.6	-0.003	0.58	S-Sep.2020	-2.3
Educational books and supplies <sup>4</sup> .....	0.109	-0.2	0.000	0.63	S-Nov.2020	-0.2
College textbooks <sup>4, 14, 6</sup> .....		-0.2		0.52	S-Nov.2020	-0.4
Information technology commodities <sup>11</sup> .....	0.392	-0.7	-0.003	0.70	S-Sep.2020	-2.9
Computers, peripherals, and smart home assistants <sup>7</sup> .....	0.297	0.0	0.000	0.93	S-Oct.2020	-0.7
Computer software and accessories <sup>4, 5</sup> .....	0.018	-1.2	0.000	1.59	S-Sep.2020	-5.6
Telephone hardware, calculators, and other consumer information items <sup>5</sup> .....	0.077	-3.1	-0.002	0.79	S-Nov.2020	-4.6
Alcoholic beverages.....	1.038	-0.1	-0.001	0.24	S-Sep.2020	-0.1
Alcoholic beverages at home.....	0.580	0.0	0.000	0.35	—	—
Beer, ale, and other malt beverages at home.....	0.223	-0.1	0.000	0.45	L-Nov.2020	0.5
Distilled spirits at home <sup>4</sup> .....	0.094	0.8	0.001	0.52	L-Sep.2020	0.8
Whiskey at home <sup>4, 6</sup> .....		0.9		0.80	L-Jul.2020	1.4
Distilled spirits, excluding whiskey, at home <sup>4, 6</sup> .....		1.0		0.59	L-Jan.2020	1.0
Wine at home.....	0.263	-0.1	0.000	0.68	S-Sep.2020	-0.5
Alcoholic beverages away from home <sup>4</sup> .....	0.458	0.1	0.000	0.31	L-Nov.2020	0.6
Beer, ale, and other malt beverages away from home <sup>5, 6</sup> .....		0.0		0.72	S-Oct.2020	-0.6
Wine away from home <sup>4, 5, 6</sup> .....		0.0		0.33	S-Sep.2020	0.0
Distilled spirits away from home <sup>4, 5, 6</sup> .....		0.2		0.53	L-Nov.2020	0.7
Other goods <sup>11</sup> .....	1.483	1.1	0.016	0.21	L-Apr.2017	1.7
Tobacco and smoking products <sup>4</sup> .....	0.608	1.8	0.011	0.20	L-Apr.2017	3.9
Cigarettes <sup>4, 5</sup> .....	0.529	1.8	0.010	0.22	L-Apr.2017	4.1
Tobacco products other than cigarettes <sup>4, 5</sup> .....	0.060	1.4	0.001	0.43	L-Feb.2015	1.4
Personal care products <sup>4</sup> .....	0.678	0.6	0.004	0.32	L-Jul.2020	0.6
Hair, dental, shaving, and miscellaneous personal care products <sup>4, 5</sup> .....	0.364	0.4	0.002	0.39	L-Jul.2020	0.6
Cosmetics, perfume, bath, nail preparations and implements <sup>4</sup> .....	0.306	0.8	0.002	0.57	L-Feb.2020	1.0
Miscellaneous personal goods <sup>4, 5</sup> .....	0.197	0.6	0.001	0.98	L-Nov.2020	1.9
Stationery, stationery supplies, gift wrap <sup>6</sup> .....		1.3		0.89	L-Nov.2020	2.8
Services less energy services.....	59.526	0.0	0.017	0.04	—	—
Shelter.....	33.316	0.1	0.028	0.05	—	—
Rent of shelter <sup>15</sup> .....	32.950	0.1	0.027	0.05	—	—
Rent of primary residence.....	7.862	0.1	0.009	0.04	—	—

See footnotes at end of table.



**Table 6. Consumer Price Index for All Urban Consumers (CPI-U): U.S. city average, by expenditure category, January 2021, 1-month analysis table — Continued**

[1982-84=100, unless otherwise noted]

Expenditure category	Relative importance Dec. 2020	One Month				
		Seasonally adjusted percent change Dec. 2020- Jan. 2021	Seasonally adjusted effect on All Items Dec. 2020- Jan. 2021 <sup>1</sup>	Standard error, median price change <sup>2</sup>	Largest (L) or Smallest (S) seasonally adjusted change since: <sup>3</sup>	
					Date	Percent change
Lodging away from home <sup>5</sup> .....	0.825	-1.9	-0.017	1.46	S-Oct.2020	-2.7
Housing at school, excluding board <sup>15</sup> .....	0.118	0.1	0.000	0.03	—	—
Other lodging away from home including hotels and motels.....	0.707	-2.2	-0.017	1.65	S-Oct.2020	-3.1
Owners' equivalent rent of residences <sup>15</sup> .....	24.263	0.1	0.034	0.04	—	—
Owners' equivalent rent of primary residence <sup>15</sup> ..	23.044	0.1	0.032	0.04	—	—
Tenants' and household insurance <sup>4, 5</sup> .....	0.366	0.5	0.002	0.12	L-Jul.2018	0.6
Water and sewer and trash collection services <sup>5</sup> .....	1.107	0.4	0.004	0.07	—	—
Water and sewerage maintenance.....	0.810	0.2	0.001	0.09	S-Nov.2020	0.2
Garbage and trash collection <sup>4, 13</sup> .....	0.297	0.9	0.003	0.15	L-Jan.2020	0.9
Household operations <sup>4, 5</sup> .....	0.899	0.7	0.006	0.13	S-Nov.2020	-0.4
Domestic services <sup>4, 5</sup> .....	0.302	1.3	0.004	0.20	S-Nov.2020	-1.1
Gardening and lawncare services <sup>4, 5</sup> .....						
Moving, storage, freight expense <sup>4, 5</sup> .....	0.091	2.0	0.002	0.63	L-Aug.2020	2.6
Repair of household items <sup>4, 5</sup> .....	0.116		0.000	0.08	—	—
Medical care services.....	7.289	0.5	0.035	0.09	L-Jul.2020	0.5
Professional services.....	3.662	0.9	0.034	0.12	L-Jan.1988	0.9
Physicians' services <sup>4</sup> .....	1.817	1.6	0.028	0.16	L-EVER	—
Dental services.....	1.005	0.0	0.000	0.24	S-Aug.2020	-0.1
Eyeglasses and eye care <sup>4, 9</sup> .....	0.365	-0.3	-0.001	0.28	S-Nov.2020	-0.5
Services by other medical professionals <sup>4, 9</sup> .....	0.474	1.6	0.007	0.06	L-EVER	—
Hospital and related services.....	2.419	0.3	0.007	0.13	—	—
Hospital services <sup>16</sup> .....	2.221	0.3	0.006	0.14	—	—
Inpatient hospital services <sup>16, 6</sup> .....		0.1		0.24	S-Oct.2020	-0.3
Outpatient hospital services <sup>9, 6</sup> .....		0.3		0.22	—	—
Nursing homes and adult day services <sup>16</sup> .....	0.124	0.0	0.000	0.14	S-Aug.2019	0.0
Care of invalids and elderly at home <sup>4, 8</sup> .....	0.073	0.6	0.000	0.18	L-Oct.2020	2.6
Health insurance <sup>4, 8</sup> .....	1.209	-0.1	-0.002	0.08	L-Aug.2020	0.9
Transportation services.....	5.142	-0.3	-0.016	0.28	L-Nov.2020	1.3
Leased cars and trucks <sup>4, 14</sup> .....	0.641		-0.028	0.38	—	—
Car and truck rental <sup>5</sup> .....	0.134	-1.1	-0.001	1.88	L-Nov.2020	2.5
Motor vehicle maintenance and repair <sup>4</sup> .....	1.099	0.2	0.003	0.17	L-Nov.2020	0.4
Motor vehicle body work <sup>4</sup> .....	0.059	0.4	0.000	0.20	L-Sep.2020	0.7
Motor vehicle maintenance and servicing <sup>4</sup> .....	0.635	0.0	0.000	0.24	S-Sep.2020	-0.1
Motor vehicle repair <sup>4, 5</sup> .....	0.345	0.7	0.002	0.23	L-Sep.2020	0.7
Motor vehicle insurance.....	1.598	1.6	0.025	0.51	L-Jul.2020	6.5
Motor vehicle fees <sup>4, 5</sup> .....	0.565	0.8	0.004	0.21	L-Sep.2020	0.8
State motor vehicle registration and license fees <sup>4, 5</sup> .....	0.297	0.2	0.001	0.04	L-Jul.2020	0.3
Parking and other fees <sup>4, 5</sup> .....	0.254	1.5	0.004	0.43	L-Sep.2020	1.8
Parking fees and tolls <sup>5, 6</sup> .....		2.0		0.50	L-Sep.2020	2.1
Public transportation.....	1.105	-1.7	-0.019	0.65	S-May 2020	-4.1
Airline fares.....	0.633	-3.2	-0.021	0.82	S-May 2020	-5.5
Other intercity transportation.....	0.182	0.7	0.001	0.85	S-Jul.2020	-0.4
Ship fare <sup>4, 5, 6</sup> .....		1.0		1.02	S-Sep.2020	-0.8
Intracity transportation <sup>4</sup> .....	0.287	0.2	0.000	0.46	L-Sep.2020	8.8
Intracity mass transit <sup>4, 11, 6</sup> .....		-0.6		0.31	S-Oct.2020	-9.3
Recreation services <sup>11</sup> .....	3.789	-1.0	-0.036	0.23	S-Jul.2020	-1.2
Video and audio services <sup>11</sup> .....	1.268	-0.4	-0.005	0.17	S-Oct.2012	-0.4
Cable and satellite television service <sup>13</sup> .....	1.192	-0.4	-0.005	0.15	S-Oct.2012	-0.4
Video djscs and other media, including rental of video <sup>4, 5</sup> .....	0.076	0.5	0.000	1.18	L-Sep.2020	0.9
Video discs and other media <sup>4, 5, 6</sup> .....		0.6		1.57	L-Sep.2020	1.7

See footnotes at end of table.

**Table 6. Consumer Price Index for All Urban Consumers (CPI-U): U.S. city average, by expenditure category, January 2021, 1-month analysis table — Continued**

[1982-84=100, unless otherwise noted]

Expenditure category	Relative importance Dec. 2020	One Month				
		Seasonally adjusted percent change Dec. 2020-Jan. 2021	Seasonally adjusted effect on All Items Dec. 2020-Jan. 2021 <sup>1</sup>	Standard error, median price change <sup>2</sup>	Largest (L) or Smallest (S) seasonally adjusted change since: <sup>3</sup>	
					Date	Percent change
Rental of video discs and other media <sup>4, 5, 6</sup> .....		1.2		0.21	L-Jun.2019	2.2
Pet services including veterinary <sup>5</sup> .....	0.560	1.4	0.008	0.20	L-Feb.2000	2.7
Veterinarian services <sup>5, 6</sup> .....		1.0		0.22	L-Sep.2010	2.3
Photographers and photo processing <sup>4, 5</sup> .....	0.044	0.7	0.000	0.38	L-Sep.2020	1.2
Other recreation services <sup>5</sup> .....	1.916	-2.1	-0.040	0.43	S-Jul.2020	-3.1
Club membership for shopping clubs, fraternal, or other organizations, or participant sports fees <sup>4, 5</sup> .....	0.689	-0.1	0.000	0.32	S-Jul.2020	-4.7
Admissions <sup>4</sup> .....	0.688	-5.5	-0.038	0.85	S-EVER	—
Admission to movies, theaters, and concerts <sup>4, 5, 6</sup> .....		0.2		0.78	—	—
Admission to sporting events <sup>4, 5, 6</sup> .....				2.17	—	—
Fees for lessons or instructions <sup>4, 9</sup> .....	0.218	2.0	0.004	0.22	L-Jun.2007	2.1
Education and communication services <sup>11</sup> .....	6.308	0.0	0.001	0.07	S-Nov.2020	0.0
Tuition, other school fees, and childcare.....	2.924	0.1	0.001	0.05	S-Oct.2020	0.1
College tuition and fees.....	1.569	0.0	0.000	0.06	S-Oct.2020	0.0
Elementary and high school tuition and fees.....	0.431	0.2	0.001	0.14	S-Nov.2020	0.2
Day care and preschool <sup>12</sup> .....	0.768	0.0	0.000	0.05	S-Sep.2020	0.0
Technical and business school tuition and fees <sup>5</sup> .....	0.037	0.1	0.000	0.21	—	—
Postage and delivery services <sup>5</sup> .....	0.111	0.3	0.000	0.03	L-Nov.2020	0.3
Postage.....	0.101	0.2	0.000	0.00	L-Nov.2020	0.3
Delivery services <sup>5</sup> .....	0.010	0.6	0.000	0.35	S-Nov.2020	0.4
Telephone services <sup>4, 5</sup> .....	2.369	0.1	0.003	0.09	L-Oct.2020	0.3
Wireless telephone services <sup>4, 5</sup> .....	1.960	0.0	0.000	0.10	L-Oct.2020	0.0
Land-line telephone services <sup>4, 11</sup> .....	0.410	0.6	0.002	0.19	L-Oct.2020	1.9
Internet services and electronic information providers <sup>5</sup> .....	0.893	-0.4	-0.003	0.20	S-Jun.2020	-0.4
Other personal services <sup>4, 11</sup> .....	1.676	-0.3	-0.005	0.17	S-Nov.2020	-0.3
Personal care services <sup>4</sup> .....	0.694	0.7	0.005	0.35	S-Nov.2020	0.1
Haircuts and other personal care services <sup>4, 5</sup> .....	0.694	0.7	0.005	0.35	S-Nov.2020	0.1
Miscellaneous personal services <sup>4</sup> .....	0.981	-1.0	-0.010	0.12	S-EVER	—
Legal services <sup>4, 9</sup> .....	0.250	0.1	0.000	0.05	L-Aug.2020	0.1
Funeral expenses <sup>4, 9</sup> .....	0.140	0.1	0.000	0.10	—	—
Laundry and dry cleaning services <sup>4, 5</sup> .....	0.220	0.7	0.002	0.17	L-Mar.2019	0.8
Apparel services other than laundry and dry cleaning <sup>4, 5</sup> .....	0.030	0.1	0.000	0.37	S-Nov.2020	-0.6
Financial services <sup>9</sup> .....	0.229	-5.0	-0.012	0.38	S-Nov.2008	-6.0
Checking account and other bank services <sup>4, 5, 6</sup> .....		-11.2		0.17	S-EVER	—
Tax return preparation and other accounting fees <sup>4, 5, 6</sup> .....		0.3		0.36	L-Nov.2020	0.4
<b>Special aggregate indexes</b>						
All items less food.....	85.881	0.3	0.245	0.04	L-Sep.2020	0.3
All items less shelter.....	66.684	0.3	0.229	0.05	—	—
All items less food and shelter.....	52.565	0.4	0.217	0.06	L-Sep.2020	0.4
All items less food, shelter, and energy.....	46.410	0.0	-0.003	0.07	—	—
All items less food, shelter, energy, and used cars and trucks.....	43.661	0.1	0.022	0.07	L-Nov.2020	0.3
All items less medical care.....	91.130	0.2	0.223	0.04	S-Nov.2020	0.2
All items less energy.....	93.845	0.0	0.037	0.04	S-May 2020	0.0
Commodities.....	37.339	0.7	0.269	0.07	L-Aug.2020	0.8
Commodities less food, energy, and used cars and trucks.....	17.450	0.3	0.053	0.11	L-Nov.2020	0.3

See footnotes at end of table.

**Table 6. Consumer Price Index for All Urban Consumers (CPI-U): U.S. city average, by expenditure category, January 2021, 1-month analysis table — Continued**

[1982-84=100, unless otherwise noted]

Expenditure category	Relative importance Dec. 2020	One Month				
		Seasonally adjusted percent change Dec. 2020-Jan. 2021	Seasonally adjusted effect on All Items Dec. 2020-Jan. 2021 <sup>1</sup>	Standard error, median price change <sup>2</sup>	Largest (L) or Smallest (S) seasonally adjusted change since: <sup>3</sup>	
					Date	Percent change
Commodities less food.....	23.220	1.1	0.257	0.10	L-Aug.2020	1.2
Commodities less food and beverages.....	22.182	1.2	0.258	0.10	L-Aug.2020	1.2
Services.....	62.661	0.0	0.008	0.04	—	—
Services less rent of shelter <sup>15</sup> .....	29.711	-0.1	-0.035	0.07	S-May 2020	-0.3
Services less medical care services.....	55.372	-0.1	-0.059	0.05	S-May 2020	-0.1
Durables.....	10.942	-0.5	-0.052	0.11	S-Sep.2018	-0.5
Nondurables.....	26.397	0.7	0.189	0.08	S-Nov.2020	0.0
Nondurables less food.....	12.278	1.9	0.238	0.14	L-Jun.2020	3.0
Nondurables less food and beverages.....	11.241	2.1	0.240	0.15	L-Jun.2020	3.3
Nondurables less food, beverages, and apparel.....	8.577	2.1	0.178	0.12	S-Nov.2020	-0.3
Nondurables less food and apparel.....	9.615	1.8	0.176	0.11	S-Nov.2020	-0.2
Housing.....	42.385	0.0	0.014	0.05	S-Apr.2020	0.0
Education and communication <sup>5</sup> .....	6.810	0.0	-0.002	0.08	S-Sep.2020	-0.1
Education <sup>5</sup> .....	3.033	0.0	0.001	0.06	S-Sep.2020	-0.2
Communication <sup>5</sup> .....	3.777	-0.1	-0.003	0.13	S-Sep.2020	-0.1
Information and information processing <sup>5</sup> .....	3.666	-0.1	-0.003	0.13	S-Sep.2020	-0.1
Information technology, hardware and services <sup>17</sup> .....	1.297	-0.5	-0.006	0.27	S-Sep.2020	-0.7
Recreation <sup>5</sup> .....	5.797	-0.6	-0.034	0.18	S-Jul.2020	-0.6
Video and audio <sup>5</sup> .....	1.537	-0.4	-0.006	0.17	S-Sep.2016	-0.5
Pets, pet products and services <sup>5</sup> .....	1.192	0.7	0.008	0.22	L-Aug.2020	0.9
Photography <sup>5</sup> .....	0.071	0.9	0.001	0.38	L-Jun.2020	1.7
Food and beverages.....	15.157	0.1	0.011	0.09	S-Nov.2020	0.0
Domestically produced farm food <sup>4</sup> .....	6.489	0.2	0.011	0.17	S-Nov.2020	-0.5
Other services.....	11.773	-0.3	-0.040	0.10	S-Mar.2017	-0.8
Apparel less footwear.....	2.019	2.5	0.051	0.56	L-EVER	—
Fuels and utilities.....	4.387	0.0	0.001	0.14	S-May 2020	-0.1
Household energy.....	3.280	-0.1	-0.003	0.18	S-Aug.2020	-0.1
Medical care.....	8.870	0.4	0.034	0.08	L-Jul.2020	0.4
Transportation.....	15.160	1.1	0.161	0.13	L-Sep.2020	1.2
Private transportation.....	14.055	1.3	0.180	0.11	L-Aug.2020	1.3
New and used motor vehicles <sup>5</sup> .....	7.525	-1.0	-0.076	0.10	S-Sep.2003	-1.1
Utilities and public transportation.....	8.908	-0.4	-0.032	0.12	S-May 2020	-0.4
Household furnishings and operations.....	4.682	-0.3	-0.015	0.19	S-May 2018	-0.4
Other goods and services.....	3.159	0.4	0.011	0.13	S-Nov.2020	0.1
Personal care <sup>4</sup> .....	2.551	0.0	0.000	0.16	S-Nov.2020	-0.1

<sup>1</sup> The 'effect' of an item category is a measure of that item's contribution to the All items price change. For example, if the Food index had an effect of 0.40, and the All items index rose 1.2 percent, then the increase in food prices contributed 0.40 / 1.2, or 33.3 percent, to that All items increase. Said another way, had food prices been unchanged for that month the change in the All items index would have been 1.2 percent minus 0.40, or 0.8 percent. Effects can be negative as well. For example, if the effect of food was a negative 0.1, and the All items index rose 0.5 percent, the All items index actually would have been 0.1 percent higher (or 0.6 percent) had food prices been unchanged. Since food prices fell while prices overall were rising, the contribution of food to the All items price change was negative (in this case, -0.1 / 0.5, or minus 20 percent).

<sup>2</sup> A statistic's margin of error is often expressed as its point estimate plus or minus two standard errors. For example, if a CPI category rose 0.6 percent, and its standard error was 0.15 percent, the margin of error on this item's 1-month percent change would be 0.6 percent, plus or minus 0.3 percent.

<sup>3</sup> If the current seasonally adjusted 1-month percent change is greater than the previous published 1-month percent change, then this column identifies the closest prior month with a 1-month percent change as (L)arge as or (L)arger than the current 1-month change. If the current 1-month percent change is smaller than the previous published 1-month percent change, the most recent month with a change as (S)mall or (S)maller than the current month change is identified. If the current and previous published 1-month percent changes are equal, a dash will appear. Standard numerical comparisons are used. For example, 0.8% is greater than 0.6%, -0.4% is less than -0.2%, and -0.2% is less than 0.0%. Note that a (L)arger change can be a smaller decline, for example, a -0.2% change is larger than a -0.4% change, but still represents a decline in the price index. Likewise, (S)maller changes can be increases, for example, a 0.6% change is smaller than 0.8%, but still represents an increase in the price index. In this context, a -0.2% change is considered to be smaller than a 0.0% change.

<sup>4</sup> Not seasonally adjusted.

<sup>5</sup> Indexes on a December 1997=100 base.

<sup>6</sup> Special indexes based on a substantially smaller sample. These series do not contribute to the all items index aggregation and therefore do not have a relative importance or effect.

<sup>7</sup> Indexes on a December 2007=100 base.

<sup>8</sup> Indexes on a December 2005=100 base.

<sup>9</sup> Indexes on a December 1986=100 base.

<sup>10</sup> Indexes on a December 1993=100 base.

<sup>11</sup> Indexes on a December 2009=100 base.

<sup>12</sup> Indexes on a December 1990=100 base.

<sup>13</sup> Indexes on a December 1983=100 base.

<sup>14</sup> Indexes on a December 2001=100 base.

<sup>15</sup> Indexes on a December 1982=100 base.

<sup>16</sup> Indexes on a December 1996=100 base.

<sup>17</sup> Indexes on a December 1988=100 base.

**Table 7. Consumer Price Index for All Urban Consumers (CPI-U): U.S. city average, by expenditure category, January 2021, 12-month analysis table**  
 [1982-84=100, unless otherwise noted]

Expenditure category	Relative importance Dec. 2020	Twelve Month				
		Unadjusted percent change Jan. 2020-Jan. 2021	Unadjusted effect on All Items Jan. 2020-Jan. 2021 <sup>1</sup>	Standard error, median price change <sup>2</sup>	Largest (L) or Smallest (S) unadjusted change since: <sup>3</sup>	
					Date	Percent change
All items.....	100.000	1.4		0.09	—	—
Food.....	14.119	3.8	0.522	0.16	S-Nov.2020	3.7
Food at home.....	7.772	3.7	0.281	0.24	S-Nov.2020	3.6
Cereals and bakery products.....	1.001	2.5	0.025	0.52	S-Nov.2020	2.4
Cereals and cereal products.....	0.308	2.6	0.008	0.79	S-Sep.2020	2.6
Flour and prepared flour mixes.....	0.041	1.7	0.001	1.47	S-Sep.2020	0.7
Breakfast cereal.....	0.142	3.2	0.004	1.30	L-Apr.2012	3.9
Rice, pasta, cornmeal.....	0.124	2.4	0.003	1.30	S-Nov.2020	1.9
Rice <sup>4, 5</sup> .....		4.4		1.80	S-Nov.2020	3.7
Bakery products.....	0.693	2.5	0.017	0.68	S-Nov.2020	2.2
Bread <sup>4</sup> .....	0.200	3.5	0.007	1.23	—	—
White bread <sup>5</sup> .....		2.3		1.35	S-Jan.2020	2.0
Bread other than white <sup>5</sup> .....		4.8		1.27	L-Mar.2012	5.9
Fresh biscuits, rolls, muffins <sup>4</sup> .....	0.101	4.1	0.004	1.53	L-Sep.2020	4.3
Cakes, cupcakes, and cookies.....	0.178	1.5	0.003	1.06	S-Nov.2020	0.5
Cookies <sup>5</sup> .....		2.1		1.36	S-Nov.2020	1.7
Fresh cakes and cupcakes <sup>5</sup> .....		0.0		1.83	L-Jul.2020	0.5
Other bakery products.....	0.214	1.6	0.003	1.12	S-Mar.2020	0.0
Fresh sweetrolls, coffeecakes, doughnuts <sup>5</sup> .....		4.2		2.11	S-Oct.2020	3.9
Crackers, bread, and cracker products <sup>5</sup> .....		3.2		1.89	L-Nov.2020	5.4
Frozen and refrigerated bakery products, pies, tarts, turnovers <sup>5</sup> .....		-0.7		1.51	S-Mar.2020	-1.3
Meats, poultry, fish, and eggs.....	1.736	5.1	0.086	0.50	L-Nov.2020	5.9
Meats, poultry, and fish.....	1.637	5.4	0.085	0.51	L-Nov.2020	6.0
Meats.....	1.026	5.5	0.055	0.64	L-Nov.2020	6.1
Beef and veal.....	0.471	6.4	0.029	0.93	L-Nov.2020	7.5
Uncooked ground beef.....	0.173	4.4	0.007	1.27	S-Feb.2020	3.8
Uncooked beef roasts <sup>4</sup> .....	0.073	8.4	0.006	2.74	L-Nov.2020	11.3
Uncooked beef steaks <sup>4</sup> .....	0.180	6.6	0.011	1.39	L-Oct.2020	6.7
Uncooked other beef and veal <sup>4</sup> .....	0.044	9.7	0.004	2.51	L-Aug.2020	10.0
Pork.....	0.322	5.3	0.016	1.15	L-Oct.2020	6.2
Bacon, breakfast sausage, and related products <sup>4</sup> .....	0.134	3.5	0.005	1.43	S-May 2020	0.8
Bacon and related products <sup>5</sup> .....		5.0		1.36	S-Nov.2020	4.2
Breakfast sausage and related products <sup>4, 5</sup> .....		1.9		2.43	S-Nov.2019	1.9
Ham.....	0.062	2.9	0.002	3.22	L-Sep.2020	3.1
Ham, excluding canned <sup>5</sup> .....		3.3		3.42	L-Aug.2020	3.9
Pork chops.....	0.052	7.8	0.004	2.49	S-Mar.2020	3.2
Other pork including roasts, steaks, and ribs <sup>4</sup> .....	0.075	9.0	0.006	2.52	L-Oct.2020	10.4
Other meats.....	0.233	4.2	0.009	1.06	S-Mar.2020	1.9
Frankfurters <sup>5</sup> .....		4.4		2.85	S-Mar.2020	1.9
Lunchmeats <sup>4, 5</sup> .....		4.3		1.25	S-Jul.2020	4.1
Poultry.....	0.333	6.1	0.019	1.09	L-Nov.2020	7.0
Chicken <sup>4</sup> .....	0.273	5.6	0.015	1.13	L-Nov.2020	6.7
Fresh whole chicken <sup>5</sup> .....		3.8		2.20	L-Nov.2020	6.4
Fresh and frozen chicken parts <sup>5</sup> .....		6.2		1.56	L-Nov.2020	6.5
Other uncooked poultry including turkey <sup>4</sup> .....	0.060	7.9	0.005	3.45	L-Nov.2020	8.6
Fish and seafood.....	0.278	4.3	0.012	0.94	S-Oct.2020	4.3
Fresh fish and seafood <sup>4</sup> .....	0.140	3.7	0.005	1.53	S-Aug.2020	2.9
Processed fish and seafood <sup>4</sup> .....	0.138	4.9	0.006	1.06	L-Feb.2019	5.2
Shelf stable fish and seafood <sup>5</sup> .....		5.5		1.74	—	—
Frozen fish and seafood <sup>5</sup> .....		5.0		1.70	L-Jun.2020	5.0
Eggs.....	0.099	0.8	0.001	1.87	L-Nov.2020	4.3

See footnotes at end of table.

**Table 7. Consumer Price Index for All Urban Consumers (CPI-U): U.S. city average, by expenditure category, January 2021, 12-month analysis table — Continued**  
 [1982-84=100, unless otherwise noted]

Expenditure category	Relative importance Dec. 2020	Twelve Month				
		Unadjusted percent change Jan. 2020-Jan. 2021	Unadjusted effect on All Items Jan. 2020-Jan. 2021 <sup>1</sup>	Standard error, median price change <sup>2</sup>	Largest (L) or Smallest (S) unadjusted change since: <sup>3</sup>	
					Date	Percent change
Dairy and related products.....	0.792	3.8	0.029	0.62	S-Nov.2020	3.6
Milk <sup>4</sup> .....	0.218	3.2	0.007	1.11	S-Aug.2019	3.0
Fresh whole milk <sup>5</sup> .....		4.7		1.99	S-Jul.2020	4.6
Fresh milk other than whole <sup>4, 5</sup> .....		2.7		1.10	S-Jun.2019	1.9
Cheese and related products.....	0.266	4.5	0.012	0.91	L-Oct.2020	4.6
Ice cream and related products.....	0.111	3.3	0.004	1.40	S-Nov.2020	2.6
Other dairy and related products <sup>4</sup> .....	0.197	3.8	0.007	1.03	—	—
Fruits and vegetables.....	1.341	2.7	0.037	0.62	S-Oct.2020	2.6
Fresh fruits and vegetables.....	1.053	2.4	0.025	0.76	S-Oct.2020	2.2
Fresh fruits.....	0.538	3.6	0.019	1.19	L-Feb.2018	4.0
Apples.....	0.073	1.5	0.001	1.95	L-Oct.2019	2.3
Bananas.....	0.074	0.5	0.000	1.54	L-Apr.2020	0.7
Citrus fruits <sup>4</sup> .....	0.136	5.4	0.007	1.83	L-Sep.2018	5.4
Oranges, including tangerines <sup>5</sup> .....		4.6		2.52	L-May 2018	8.8
Other fresh fruits <sup>4</sup> .....	0.254	4.2	0.011	1.94	L-Nov.2020	5.4
Fresh vegetables.....	0.516	1.1	0.006	0.89	S-Apr.2020	0.8
Potatoes.....	0.075	1.4	0.001	2.00	L-Aug.2020	4.9
Lettuce.....	0.068	4.1	0.003	2.64	S-Aug.2020	2.0
Tomatoes.....	0.082	-1.4	-0.001	2.33	S-Dec.2019	-7.7
Other fresh vegetables.....	0.290	1.1	0.003	1.36	S-Jun.2020	0.9
Processed fruits and vegetables <sup>4</sup> .....	0.288	4.1	0.012	0.77	S-Oct.2020	3.8
Canned fruits and vegetables <sup>4</sup> .....	0.150	4.7	0.007	1.17	S-Oct.2020	2.8
Canned fruits <sup>4, 5</sup> .....		3.1		1.49	S-Aug.2020	2.9
Canned vegetables <sup>4, 5</sup> .....		6.5		1.67	L-Apr.2012	8.2
Frozen fruits and vegetables <sup>4</sup> .....	0.086	4.1	0.003	1.35	S-Nov.2020	4.1
Frozen vegetables <sup>5</sup> .....		2.6		1.73	S-Mar.2020	0.9
Other processed fruits and vegetables including dried <sup>4</sup> .....	0.052	2.3	0.001	1.65	S-Nov.2020	1.3
Dried beans, peas, and lentils <sup>4, 5</sup> .....		4.1		3.56	S-Nov.2020	1.8
Nonalcoholic beverages and beverage materials.....	0.930	4.3	0.040	0.59	S-Nov.2020	3.0
Juices and nonalcoholic drinks <sup>4</sup> .....	0.666	5.0	0.032	0.72	S-Nov.2020	4.4
Carbonated drinks.....	0.278	7.4	0.020	1.46	L-Oct.2020	7.9
Frozen noncarbonated juices and drinks <sup>4</sup> .....	0.006	0.9	0.000	2.35	S-Nov.2020	0.5
Nonfrozen noncarbonated juices and drinks <sup>4</sup> .....	0.382	3.3	0.012	0.84	S-Mar.2020	1.6
Beverage materials including coffee and tea <sup>4</sup> .....	0.264	2.7	0.007	0.94	L-Apr.2015	3.0
Coffee.....	0.169	2.5	0.004	1.23	L-Jul.2015	2.8
Roasted coffee <sup>5</sup> .....		2.6		1.70	L-Jul.2015	3.6
Instant coffee <sup>5</sup> .....		2.5		1.91	L-Oct.2020	2.7
Other beverage materials including tea <sup>4</sup> .....	0.095	3.1	0.003	1.20	L-Aug.2020	3.3
Other food at home.....	1.972	3.4	0.064	0.39	S-Nov.2020	2.9
Sugar and sweets.....	0.270	2.8	0.007	0.87	S-Nov.2020	2.8
Sugar and sugar substitutes.....	0.037	6.1	0.002	1.43	S-Sep.2020	4.7
Candy and chewing gum <sup>4</sup> .....	0.180	2.8	0.005	1.23	S-Nov.2020	1.8
Other sweets <sup>4</sup> .....	0.053	0.5	0.000	1.40	S-Sep.2020	0.3
Fats and oils.....	0.212	2.0	0.004	0.99	S-Nov.2020	1.5
Butter and margarine <sup>4</sup> .....	0.063	-1.0	-0.001	1.58	S-Feb.2020	-1.5
Butter <sup>5</sup> .....		-2.6		2.34	S-Dec.2016	-6.3
Margarine <sup>5</sup> .....		0.4		1.75	S-Jun.2020	0.4
Salad dressing <sup>4</sup> .....	0.051	1.9	0.001	1.51	S-Oct.2020	1.6
Other fats and oils including peanut butter <sup>4</sup> .....	0.098	4.0	0.004	1.64	L-Dec.2012	4.0
Peanut butter <sup>4, 5</sup> .....						
Other foods.....	1.489	3.7	0.053	0.47	S-Nov.2020	3.1
Soups.....	0.089	2.8	0.002	2.10	S-Jun.2020	2.4
Frozen and freeze dried prepared foods.....	0.259	3.1	0.008	1.03	S-Apr.2020	2.7

See footnotes at end of table.



**Table 7. Consumer Price Index for All Urban Consumers (CPI-U): U.S. city average, by expenditure category, January 2021, 12-month analysis table — Continued**  
 [1982-84=100, unless otherwise noted]

Expenditure category	Relative importance Dec. 2020	Twelve Month				
		Unadjusted percent change Jan. 2020-Jan. 2021	Unadjusted effect on All Items Jan. 2020-Jan. 2021 <sup>1</sup>	Standard error, median price change <sup>2</sup>	Largest (L) or Smallest (S) unadjusted change since: <sup>3</sup>	
					Date	Percent change
Snacks.....	0.340	3.7	0.012	1.16	S-Nov.2020	3.5
Spices, seasonings, condiments, sauces.....	0.290	3.7	0.011	0.77	—	—
Salt and other seasonings and spices <sup>4, 5</sup> .....		3.1		1.74	S-Oct.2020	0.8
Olives, pickles, relishes <sup>4, 5</sup> .....		1.7		1.17	S-Dec.2019	-1.1
Sauces and gravies <sup>4, 5</sup> .....		4.7		1.41	L-Nov.2020	4.7
Other condiments <sup>5</sup> .....		1.7		1.52	L-Oct.2020	2.6
Baby food <sup>4</sup> .....	0.042	4.2	0.002	1.18	L-Jun.2020	4.2
Other miscellaneous foods <sup>4</sup> .....	0.469	4.1	0.018	1.22	L-Aug.2020	5.2
Prepared salads <sup>6, 5</sup> .....		0.4		3.47	L-Nov.2020	1.9
Food away from home.....	6.347	3.9	0.241	0.26	—	—
Full service meals and snacks <sup>4</sup> .....	3.176	2.9	0.090	0.29	S-Nov.2020	2.9
Limited service meals and snacks <sup>4</sup> .....	2.787	6.2	0.166	0.41	L-EVER	—
Food at employee sites and schools <sup>4</sup> .....	0.130	-14.1	-0.020	1.61	S-EVER	—
Food at elementary and secondary schools <sup>7, 5</sup> .....		-21.9		5.74	S-EVER	—
Food from vending machines and mobile vendors <sup>4</sup> .....	0.080	2.2	0.002	0.93	L-Jun.2020	2.5
Other food away from home <sup>4</sup> .....	0.174	1.8	0.003	0.42	—	—
Energy.....	6.155	-3.6	-0.244	0.26	L-Feb.2020	2.8
Energy commodities.....	3.020	-8.7	-0.310	0.30	L-Feb.2020	5.0
Fuel oil and other fuels.....	0.145	-7.6	-0.013	1.00	L-Feb.2020	-4.7
Fuel oil.....	0.084	-16.5	-0.018	1.43	L-Feb.2020	-5.9
Propane, kerosene, and firewood <sup>8</sup> .....	0.061	7.7	0.005	1.17	L-Jan.2018	9.0
Motor fuel.....	2.875	-8.7	-0.297	0.31	L-Feb.2020	5.5
Gasoline (all types).....	2.811	-8.6	-0.287	0.32	L-Feb.2020	5.6
Gasoline, unleaded regular <sup>5</sup> .....		-8.8		0.73	L-Feb.2020	5.5
Gasoline, unleaded midgrade <sup>9, 5</sup> .....		-7.5		0.71	L-Mar.2020	-6.9
Gasoline, unleaded premium <sup>5</sup> .....		-7.5		0.73	L-Mar.2020	-5.6
Other motor fuels <sup>4</sup> .....	0.064	-13.2	-0.010	0.57	L-Mar.2020	-8.1
Energy services.....	3.135	2.1	0.066	0.40	S-Oct.2020	1.4
Electricity.....	2.425	1.5	0.037	0.45	S-Oct.2020	1.3
Utility (piped) gas service.....	0.710	4.3	0.029	0.71	L-Nov.2020	4.4
All items less food and energy.....	79.726	1.4	1.122	0.11	S-Jun.2020	1.2
Commodities less food and energy commodities.....	20.200	1.7	0.342	0.24	—	—
Household furnishings and supplies <sup>10</sup> .....	3.783	2.4	0.091	0.42	S-Oct.2020	1.9
Window and floor coverings and other linens <sup>4</sup> .....	0.271	-3.1	-0.009	2.13	S-Nov.2019	-4.2
Floor coverings <sup>4</sup> .....	0.062	-1.9	-0.001	1.99	S-Aug.2020	-2.3
Window coverings <sup>4</sup> .....	0.058	-3.4	-0.002	5.19	S-Oct.2019	-4.3
Other linens <sup>4</sup> .....	0.151	-3.4	-0.006	3.22	S-Dec.2019	-4.3
Furniture and bedding.....	0.944	1.5	0.014	1.04	S-Nov.2020	1.5
Bedroom furniture.....	0.329	-2.4	-0.008	1.71	S-Oct.2020	-2.8
Living room, kitchen, and dining room furniture <sup>4</sup> .....	0.454	2.6	0.012	1.56	L-Nov.2019	3.5
Other furniture <sup>4</sup> .....	0.152	7.0	0.010	2.53	S-Oct.2020	6.4
Appliances <sup>4</sup> .....	0.220	5.7	0.012	1.52	S-Oct.2020	4.8
Major appliances <sup>4</sup> .....	0.078	15.8	0.011	2.27	S-Oct.2020	13.7
Laundry equipment <sup>5</sup> .....		23.1		3.31	L-EVER	—
Other appliances <sup>4</sup> .....	0.140	0.7	0.001	1.96	S-Oct.2020	0.6
Other household equipment and furnishings <sup>4</sup> .....	0.535	2.4	0.013	1.25	L-Oct.2004	3.0
Clocks, lamps, and decorator items.....	0.313	3.4	0.011	1.94	L-Oct.2004	3.5
Indoor plants and flowers <sup>11</sup> .....	0.093	7.7	0.007	1.80	L-Nov.2000	8.6
Dishes and flatware <sup>4</sup> .....	0.052	-4.9	-0.003	3.27	S-Oct.2020	-7.2
Nonelectric cookware and tableware <sup>4</sup> .....	0.077	-2.5	-0.002	2.07	S-Jul.2020	-3.0
Tools, hardware, outdoor equipment and supplies <sup>4</sup> .....	0.892	1.7	0.015	1.03	S-Sep.2020	1.6
Tools, hardware and supplies <sup>4</sup> .....	0.243	2.4	0.006	1.75	S-Nov.2020	2.4
Outdoor equipment and supplies <sup>4</sup> .....	0.459	1.3	0.006	1.36	S-Mar.2020	0.8

See footnotes at end of table.

**Table 7. Consumer Price Index for All Urban Consumers (CPI-U): U.S. city average, by expenditure category, January 2021, 12-month analysis table — Continued**  
 [1982-84=100, unless otherwise noted]

Expenditure category	Relative importance Dec. 2020	Twelve Month				
		Unadjusted percent change Jan. 2020-Jan. 2021	Unadjusted effect on All Items Jan. 2020-Jan. 2021 <sup>1</sup>	Standard error, median price change <sup>2</sup>	Largest (L) or Smallest (S) unadjusted change since: <sup>3</sup>	
					Date	Percent change
Housekeeping supplies.....	0.922	5.3	0.047	0.64	L-Nov.2020	5.4
Household cleaning products <sup>4</sup> .....	0.367	6.3	0.022	0.80	L-Feb.2009	6.9
Household paper products <sup>4</sup> .....	0.235	9.1	0.020	1.36	L-Aug.2020	9.9
Miscellaneous household products <sup>4</sup> .....	0.320	1.6	0.005	1.34	S-Apr.2020	1.3
Apparel.....	2.663	-2.5	-0.072	0.80	L-Mar.2020	-1.6
Men's and boys' apparel.....	0.666	-2.6	-0.019	1.46	L-Mar.2020	-0.8
Men's apparel.....	0.532	-3.6	-0.021	1.53	S-Nov.2020	-5.3
Men's suits, sport coats, and outerwear.....	0.088	-15.6	-0.017	4.24	S-Nov.2020	-21.4
Men's underwear, nightwear, swimwear, and accessories.....	0.158	-0.7	-0.001	2.88	S-Dec.2019	-1.6
Men's shirts and sweaters <sup>4</sup> .....	0.150	-3.0	-0.005	2.58	L-Jan.2020	-2.0
Men's pants and shorts.....	0.130	1.3	0.002	3.27	L-Mar.2020	4.2
Boys' apparel.....	0.134	1.5	0.002	3.18	L-Sep.2019	5.4
Women's and girls' apparel.....	1.075	-3.3	-0.038	1.53	L-Mar.2020	-2.6
Women's apparel.....	0.875	-5.5	-0.053	1.52	L-Mar.2020	-3.5
Women's outerwear.....	0.062	-1.6	-0.001	4.57	L-Aug.2019	4.4
Women's dresses.....	0.092	-11.6	-0.012	3.36	S-Nov.2020	-13.5
Women's suits and separates <sup>4</sup> .....	0.446	-3.6	-0.018	2.18	L-Dec.2019	-2.5
Women's underwear, nightwear, swimwear, and accessories <sup>4</sup> .....	0.265	-7.5	-0.022	2.69	S-May 2020	-9.0
Girls' apparel.....	0.200	7.7	0.015	3.94	L-May 2012	7.9
Footwear.....	0.644	-2.1	-0.014	1.33	L-Mar.2020	-0.2
Men's footwear.....	0.224	0.1	0.000	1.82	L-Nov.2019	1.0
Boys' and girls' footwear.....	0.136	-1.9	-0.003	2.46	S-Oct.2020	-5.9
Women's footwear.....	0.284	-4.0	-0.012	2.14	S-Sep.2020	-4.6
Infants' and toddlers' apparel.....	0.125	-5.7	-0.008	2.66	S-Oct.2020	-7.6
Jewelry and watches <sup>8</sup> .....	0.153	3.9	0.006	3.31	L-Jun.2019	4.1
Watches <sup>8</sup> .....	0.040	4.0	0.002	4.26	S-Nov.2020	2.2
Jewelry <sup>8</sup> .....	0.114	3.8	0.005	3.87	L-Apr.2017	6.5
Transportation commodities less motor fuel <sup>10</sup> .....	7.144	4.6	0.316	0.25	S-Sep.2020	4.5
New vehicles.....	3.756	1.4	0.054	0.44	S-Sep.2020	1.0
New cars and trucks <sup>4, 5</sup> .....		1.5		0.48	S-Oct.2020	1.5
New cars <sup>5</sup> .....		1.6		0.76	S-Sep.2020	1.5
New trucks <sup>12, 5</sup> .....		1.5		0.50	S-Sep.2020	1.0
Used cars and trucks.....	2.750	10.0	0.250	0.06	—	—
Motor vehicle parts and equipment.....	0.393	0.6	0.002	0.64	L-Sep.2020	0.6
Tires.....	0.249	1.4	0.003	0.74	L-Nov.2019	2.4
Vehicle accessories other than tires <sup>4</sup> .....	0.144	-0.8	-0.001	1.42	S-Sep.2016	-1.0
Vehicle parts and equipment other than tires <sup>5</sup> .....		-0.7		1.73	S-Apr.1995	-0.8
Motor oil, coolant, and fluids <sup>5</sup> .....		-2.4		2.04	L-Nov.2020	-1.1
Medical care commodities.....	1.580	-2.3	-0.037	1.54	L-Nov.2020	-1.1
Medicinal drugs <sup>10</sup> .....	1.515	-2.1	-0.033	1.58	—	—
Prescription drugs.....	1.141	-2.4	-0.028	2.04	—	—
Nonprescription drugs <sup>10</sup> .....	0.374	-1.3	-0.005	0.99	L-Sep.2020	-0.6
Medical equipment and supplies <sup>10</sup> .....	0.066	-6.1	-0.004	1.50	L-Oct.2020	-4.8
Recreation commodities <sup>10</sup> .....	2.008	-0.2	-0.004	0.58	—	—
Video and audio products <sup>10</sup> .....	0.269	-0.8	-0.002	0.96	—	—
Televisions.....	0.091	-2.9	-0.003	1.45	L-Apr.1998	-2.9
Other video equipment <sup>4</sup> .....	0.042	4.8	0.002	1.93	L-EVER	—
Audio equipment.....	0.079	-1.6	-0.001	2.02	S-Sep.2020	-1.6
Recorded music and music subscriptions <sup>4</sup> .....	0.045	-1.1	-0.001	1.98	S-Aug.2020	-2.0
Pets and pet products.....	0.632	-1.7	-0.011	0.66	L-Sep.2020	-1.6
Pet food <sup>4, 5</sup> .....		-0.5		0.81	L-May 2020	0.2
Purchase of pets, pet supplies, accessories <sup>4, 5</sup> .....		-3.3		1.61	—	—

See footnotes at end of table.



**Table 7. Consumer Price Index for All Urban Consumers (CPI-U): U.S. city average, by expenditure category, January 2021, 12-month analysis table — Continued**  
 [1982-84=100, unless otherwise noted]

Expenditure category	Relative importance Dec. 2020	Twelve Month				
		Unadjusted percent change Jan. 2020-Jan. 2021	Unadjusted effect on All Items Jan. 2020-Jan. 2021 <sup>1</sup>	Standard error, median price change <sup>2</sup>	Largest (L) or Smallest (S) unadjusted change since: <sup>3</sup>	
					Date	Percent change
Sporting goods.....	0.604	2.8	0.017	1.44	L-Aug.2020	3.4
Sports vehicles including bicycles.....	0.361	1.0	0.004	2.05	S-Apr.2020	-0.5
Sports equipment.....	0.232	5.7	0.013	1.43	L-Feb.2009	7.1
Photographic equipment and supplies.....	0.026	4.6	0.001	2.04	S-Nov.2020	2.0
Photographic equipment <sup>4, 5</sup> .....		6.5		1.80	S-Nov.2020	1.1
Recreational reading materials.....	0.120	4.3	0.005	2.24	S-Nov.2020	2.8
Newspapers and magazines <sup>4</sup> .....	0.068	4.3	0.003	3.31	S-Nov.2020	3.0
Recreational books <sup>4</sup> .....	0.050	4.3	0.002	2.51	S-Nov.2020	2.8
Other recreational goods <sup>4</sup> .....	0.356	-3.8	-0.014	1.27	S-Aug.2020	-4.9
Toys.....	0.274	-4.1	-0.012	1.56	S-Nov.2020	-4.3
Toys, games, hobbies and playground equipment <sup>1, 5</sup> .....		-1.0		1.48	S-Nov.2020	-1.6
Sewing machines, fabric and supplies <sup>4</sup> .....	0.020	-6.1	-0.001	3.12	L-Nov.2020	2.2
Music instruments and accessories <sup>4</sup> .....	0.046	-1.1	-0.001	2.64	S-Feb.2019	-1.2
Education and communication commodities <sup>10</sup> .....	0.501	-1.9	-0.010	1.26	L-Sep.2018	-1.9
Educational books and supplies.....	0.109	3.0	0.003	1.94	L-May 2018	4.3
College textbooks <sup>13, 5</sup> .....		2.7		1.94	L-Sep.2018	2.7
Information technology commodities <sup>10</sup> .....	0.392	-3.2	-0.013	1.37	L-Sep.2018	-3.1
Computers, peripherals, and smart home assistants <sup>6</sup> .....	0.297	1.6	0.005	1.83	L-EVER	—
Computer software and accessories <sup>4</sup> .....	0.018	-5.1	-0.001	3.82	—	—
Telephone hardware, calculators, and other consumer information items <sup>4</sup> .....	0.077	-17.8	-0.017	2.08	S-EVER	—
Alcoholic beverages.....	1.038	2.4	0.025	0.73	S-Oct.2020	2.3
Alcoholic beverages at home.....	0.580	2.4	0.014	1.07	S-Oct.2020	2.1
Beer, ale, and other malt beverages at home.....	0.223	2.2	0.005	0.79	S-Feb.2020	2.0
Distilled spirits at home.....	0.094	2.8	0.003	1.41	S-Oct.2020	2.6
Whiskey at home <sup>5</sup> .....		2.7		2.07	S-Sep.2020	1.5
Distilled spirits, excluding whiskey, at home <sup>5</sup> .....		3.1		1.36	—	—
Wine at home.....	0.263	2.4	0.006	2.11	S-Nov.2020	1.5
Alcoholic beverages away from home.....	0.458	2.5	0.011	0.88	S-Sep.2020	2.2
Beer, ale, and other malt beverages away from home <sup>4, 5</sup> .....		2.1		1.14	S-Oct.2020	1.7
Wine away from home <sup>4, 5</sup> .....		2.6		0.88	S-Oct.2020	2.5
Distilled spirits away from home <sup>4, 5</sup> .....		5.9		1.00	—	—
Other goods <sup>10</sup> .....	1.483	2.2	0.033	0.47	L-Jun.2020	2.7
Tobacco and smoking products.....	0.608	6.7	0.039	0.32	L-Nov.2017	7.5
Cigarettes <sup>4</sup> .....	0.529	7.0	0.035	0.33	L-Nov.2017	7.6
Tobacco products other than cigarettes <sup>4</sup> .....	0.060	4.1	0.002	1.00	L-Feb.2019	4.7
Personal care products.....	0.678	0.2	0.001	0.64	L-Mar.2020	0.5
Hair, dental, shaving, and miscellaneous personal care products <sup>4</sup> .....	0.364	0.2	0.001	0.80	L-Oct.2020	0.6
Cosmetics, perfume, bath, nail preparations and implements.....	0.306	0.2	0.001	0.96	L-May 2018	1.1
Miscellaneous personal goods <sup>4</sup> .....	0.197	-3.5	-0.007	2.57	S-Oct.2020	-3.9
Stationery, stationery supplies, gift wrap <sup>5</sup> .....		0.9		2.57	L-Nov.2020	1.9
Services less energy services.....	59.526	1.3	0.779	0.12	S-Dec.2010	1.3
Shelter.....	33.316	1.6	0.537	0.16	S-Aug.2011	1.6
Rent of shelter <sup>14</sup> .....	32.950	1.6	0.534	0.16	S-Aug.2011	1.6
Rent of primary residence.....	7.862	2.1	0.160	0.15	S-Sep.2011	2.1
Lodging away from home <sup>4</sup> .....	0.825	-11.4	-0.109	2.25	S-Oct.2020	-13.7
Housing at school, excluding board <sup>14</sup> .....	0.118	2.0	0.002	0.28	S-Jul.2018	2.0
Other lodging away from home including hotels and motels.....	0.707	-13.3	-0.112	2.52	S-Oct.2020	-15.9
Owners' equivalent rent of residences <sup>14</sup> .....	24.263	2.0	0.483	0.15	S-Aug.2012	2.0

See footnotes at end of table.

**Table 7. Consumer Price Index for All Urban Consumers (CPI-U): U.S. city average, by expenditure category, January 2021, 12-month analysis table — Continued**  
 [1982-84=100, unless otherwise noted]

Expenditure category	Relative importance Dec. 2020	Twelve Month				
		Unadjusted percent change Jan. 2020-Jan. 2021	Unadjusted effect on All Items Jan. 2020-Jan. 2021 <sup>1</sup>	Standard error, median price change <sup>2</sup>	Largest (L) or Smallest (S) unadjusted change since: <sup>3</sup>	
					Date	Percent change
Owners' equivalent rent of primary residence <sup>14</sup> . . .	23.044	2.0	0.458	0.15	S-Aug.2012	2.0
Tenants' and household insurance <sup>4</sup> .....	0.366	0.8	0.003	0.71	L-Jun.2019	0.8
Water and sewer and trash collection services <sup>4</sup> .....	1.107	3.6	0.039	0.23	—	—
Water and sewerage maintenance.....	0.810	3.3	0.026	0.30	—	—
Garbage and trash collection <sup>12</sup> .....	0.297	4.4	0.013	0.46	—	—
Household operations <sup>4</sup> .....	0.899	4.7	0.041	0.67	L-Nov.2019	5.4
Domestic services <sup>4</sup> .....	0.302	6.4	0.018	1.26	L-EVER	—
Gardening and lawncare services <sup>4</sup> .....						
Moving, storage, freight expense <sup>4</sup> .....	0.091	6.7	0.006	1.51	L-Nov.2020	7.1
Repair of household items <sup>4</sup> .....	0.116	0.2	0.000	0.69	L-Mar.2020	5.7
Medical care services.....	7.289	2.9	0.209	0.43	L-Nov.2020	3.2
Professional services.....	3.662	2.9	0.106	0.63	L-Jan.2017	2.9
Physicians' services.....	1.817	3.4	0.062	1.05	L-Feb.2017	3.6
Dental services.....	1.005	3.1	0.031	0.73	L-Oct.2020	3.1
Eyeglasses and eye care <sup>8</sup> .....	0.365	0.2	0.001	0.67	S-May 2018	0.1
Services by other medical professionals <sup>8</sup> .....	0.474	2.7	0.013	0.52	L-Apr.2017	3.2
Hospital and related services.....	2.419	2.9	0.070	0.62	S-Dec.2019	2.9
Hospital services <sup>15</sup> .....	2.221	2.7	0.061	0.68	S-Sep.2019	2.1
Inpatient hospital services <sup>15, 5</sup> .....		1.7		1.14	S-Sep.2019	1.7
Outpatient hospital services <sup>8, 5</sup> .....		2.0		1.03	S-Dec.2019	2.0
Nursing homes and adult day services <sup>15</sup> .....	0.124	2.8	0.003	0.40	S-Sep.2020	2.8
Care of invalids and elderly at home <sup>7</sup> .....	0.073	8.1	0.006	1.78	L-EVER	—
Health insurance <sup>7</sup> .....	1.209	2.9	0.034	0.62	S-Oct.2018	2.2
Transportation services.....	5.142	-4.1	-0.219	0.40	S-Oct.2020	-5.1
Leased cars and trucks <sup>13</sup> .....	0.641	-3.6	-0.023	1.01	S-Mar.2020	-3.6
Car and truck rental <sup>4</sup> .....	0.134	3.0	0.004	2.77	S-Aug.2020	2.0
Motor vehicle maintenance and repair.....	1.099	3.5	0.038	0.66	L-Nov.2020	3.6
Motor vehicle body work.....	0.059	3.3	0.002	0.96	L-Sep.2020	3.4
Motor vehicle maintenance and servicing.....	0.635	2.6	0.016	0.74	—	—
Motor vehicle repair <sup>4</sup> .....	0.345	5.3	0.018	1.40	L-Sep.2020	5.5
Motor vehicle insurance.....	1.598	-3.7	-0.063	0.78	L-Aug.2020	-1.5
Motor vehicle fees <sup>4</sup> .....	0.565	0.5	0.003	0.71	L-Nov.2020	0.5
State motor vehicle registration and license fees <sup>4</sup> .....	0.297	1.0	0.003	0.66	S-Aug.2019	1.0
Parking and other fees <sup>4</sup> .....	0.254	0.0	0.000	1.38	L-Oct.2020	0.5
Parking fees and tolls <sup>4, 5</sup> .....		2.2		1.40	L-Mar.2020	2.5
Public transportation.....	1.105	-13.9	-0.177	0.79	S-Oct.2020	-14.1
Airline fares.....	0.633	-21.3	-0.169	1.12	S-Sep.2020	-25.0
Other intercity transportation.....	0.182	2.9	0.005	2.07	L-Nov.2016	3.4
Ship fare <sup>4, 5</sup> .....		2.2		2.16	L-Mar.2018	3.0
Intracity transportation.....	0.287	-4.4	-0.013	0.91	S-Nov.2020	-5.2
Intracity mass transit <sup>10, 5</sup> .....		-10.1		1.75	S-Aug.2020	-11.8
Recreation services <sup>10</sup> .....	3.789	0.3	0.011	0.43	S-EVER	—
Video and audio services <sup>10</sup> .....	1.268	2.7	0.034	0.55	S-Mar.2020	2.6
Cable and satellite television service <sup>12</sup> .....	1.192	3.3	0.038	0.55	S-Feb.2020	3.3
Video discs and other media, including rental of video <sup>4</sup> .....	0.076	-4.9	-0.004	2.32	L-Oct.2020	-4.6
Video discs and other media <sup>4, 5</sup> .....		-4.9		4.12	L-Sep.2020	-4.2
Rental of video discs and other media <sup>4, 5</sup> .....		3.3		1.10	L-Feb.2020	4.3
Pet services including veterinary <sup>4</sup> .....	0.560	4.4	0.024	0.71	L-Jan.2012	4.5
Veterinarian services <sup>4, 5</sup> .....		4.5		0.75	L-Jan.2020	4.7
Photographers and photo processing <sup>4</sup> .....	0.044	2.4	0.001	1.27	L-Nov.2020	3.7
Other recreation services <sup>4</sup> .....	1.916	-2.5	-0.048	0.74	S-EVER	—

See footnotes at end of table.

**Table 7. Consumer Price Index for All Urban Consumers (CPI-U): U.S. city average, by expenditure category, January 2021, 12-month analysis table — Continued**  
 [1982-84=100, unless otherwise noted]

Expenditure category	Relative importance Dec. 2020	Twelve Month				
		Unadjusted percent change Jan. 2020-Jan. 2021	Unadjusted effect on All Items Jan. 2020-Jan. 2021 <sup>1</sup>	Standard error, median price change <sup>2</sup>	Largest (L) or Smallest (S) unadjusted change since: <sup>3</sup>	
					Date	Percent change
Club membership for shopping clubs, fraternal, or other organizations, or participant sports fees <sup>4</sup> .....	0.689	-0.9	-0.007	0.79	S-Aug.2020	-2.2
Admissions.....	0.688	-6.6	-0.047	1.45	S-EVER	-
Admission to movies, theaters, and concerts <sup>4, 5</sup> .....		1.2		1.84	-	-
Admission to sporting events <sup>4, 5</sup> .....		-21.4		6.47	S-EVER	-
Fees for lessons or instructions <sup>8</sup> .....	0.218	5.5	0.012	1.21	L-Dec.2017	5.5
Education and communication services <sup>10</sup> .....	6.308	2.0	0.128	0.25	S-Jun.2020	1.8
Tuition, other school fees, and childcare.....	2.924	1.2	0.035	0.34	S-EVER	-
College tuition and fees.....	1.569	0.4	0.007	0.55	S-EVER	-
Elementary and high school tuition and fees.....	0.431	2.3	0.010	0.84	-	-
Day care and preschool <sup>11</sup> .....	0.768	2.1	0.016	0.32	S-Jan.2019	2.1
Technical and business school tuition and fees <sup>4</sup> .....	0.037	2.5	0.001	0.67	S-Sep.2020	2.3
Postage and delivery services <sup>4</sup> .....	0.111	3.8	0.004	0.11	S-May 2020	3.8
Postage.....	0.101	4.0	0.004	0.11	S-Jan.2019	3.3
Delivery services <sup>4</sup> .....	0.010	2.5	0.000	0.59	L-Jan.2020	3.5
Telephone services <sup>4</sup> .....	2.369	4.0	0.092	0.43	S-Jun.2020	1.4
Wireless telephone services <sup>4</sup> .....	1.960	4.1	0.078	0.38	-	-
Land-line telephone services <sup>10</sup> .....	0.410	3.6	0.014	1.05	S-Sep.2019	3.6
Internet services and electronic information providers <sup>4</sup> .....	0.893	-0.4	-0.004	0.86	S-Jun.2018	-1.3
Other personal services <sup>10</sup> .....	1.676	2.0	0.033	0.40	S-Dec.2019	1.8
Personal care services.....	0.694	5.7	0.038	0.77	L-Dec.1982	5.7
Haircuts and other personal care services <sup>4</sup> .....	0.694	5.7	0.038	0.77	L-EVER	-
Miscellaneous personal services.....	0.981	-0.5	-0.005	0.34	S-EVER	-
Legal services <sup>9</sup> .....	0.250	0.7	0.002	0.84	S-Mar.2020	0.6
Funeral expenses <sup>9</sup> .....	0.140	0.8	0.001	0.67	S-EVER	-
Laundry and dry cleaning services <sup>4</sup> .....	0.220	2.3	0.005	0.66	L-May 2020	2.5
Apparel services other than laundry and dry cleaning <sup>4</sup> .....	0.030	3.6	0.001	1.01	-	-
Financial services <sup>9</sup> .....	0.229	-5.7	-0.013	1.09	S-Oct.2009	-5.9
Checking account and other bank services <sup>4, 5</sup> .....		-13.1		0.52	S-EVER	-
Tax return preparation and other accounting fees <sup>4, 5</sup> .....		-0.1		1.17	S-Feb.2020	-0.5
<b>Special aggregate indexes</b>						
All items less food.....	85.881	1.0	0.878	0.10	-	-
All items less shelter.....	66.684	1.3	0.863	0.11	L-Feb.2020	1.9
All items less food and shelter.....	52.565	0.6	0.341	0.13	L-Feb.2020	1.9
All items less food, shelter, and energy.....	46.410	1.3	0.585	0.15	S-Oct.2020	1.3
All items less food, shelter, energy, and used cars and trucks.....	43.661	0.8	0.335	0.16	S-Oct.2020	0.7
All items less medical care.....	91.130	1.3	1.227	0.09	-	-
All items less energy.....	93.845	1.8	1.643	0.10	S-Jun.2020	1.7
Commodities.....	37.339	1.5	0.554	0.15	L-Jan.2020	1.8
Commodities less food, energy, and used cars and trucks.....	17.450	0.5	0.092	0.27	-	-
Commodities less food.....	23.220	0.1	0.032	0.20	L-Feb.2020	1.0
Commodities less food and beverages.....	22.182	0.0	0.008	0.21	L-Feb.2020	1.0
Services.....	62.661	1.4	0.846	0.12	S-Mar.2011	1.4
Services less rent of shelter <sup>14</sup> .....	29.711	1.0	0.312	0.16	S-May 2020	1.0
Services less medical care services.....	55.372	1.2	0.636	0.12	S-Jan.2011	1.1
Durables.....	10.942	3.5	0.372	0.24	S-Oct.2020	3.4
Nondurables.....	26.397	0.7	0.183	0.18	L-Feb.2020	2.0

See footnotes at end of table.

**Table 7. Consumer Price Index for All Urban Consumers (CPI-U): U.S. city average, by expenditure category, January 2021, 12-month analysis table — Continued**  
 [1982-84=100, unless otherwise noted]

Expenditure category	Relative importance Dec. 2020	Twelve Month				
		Unadjusted percent change Jan. 2020-Jan. 2021	Unadjusted effect on All Items Jan. 2020-Jan. 2021 <sup>1</sup>	Standard error, median price change <sup>2</sup>	Largest (L) or Smallest (S) unadjusted change since: <sup>3</sup>	
					Date	Percent change
Nondurables less food.....	12.278	-2.6	-0.339	0.29	L-Mar.2020	-2.5
Nondurables less food and beverages.....	11.241	-3.0	-0.364	0.32	L-Mar.2020	-2.8
Nondurables less food, beverages, and apparel.....	8.577	-3.2	-0.292	0.33	L-Feb.2020	3.1
Nondurables less food and apparel.....	9.615	-2.6	-0.267	0.30	L-Feb.2020	2.9
Housing.....	42.385	1.8	0.761	0.13	S-Jan.2013	1.8
Education and communication <sup>4</sup> .....	6.810	1.7	0.118	0.25	S-Jun.2020	1.4
Education <sup>4</sup> .....	3.033	1.3	0.038	0.34	S-Nov.2020	1.3
Communication <sup>4</sup> .....	3.777	2.1	0.080	0.37	S-Jun.2020	0.9
Information and information processing <sup>4</sup> .....	3.666	2.1	0.075	0.38	S-Jun.2020	0.8
Information technology, hardware and services <sup>16</sup> .....	1.297	-1.3	-0.017	0.66	S-Nov.2020	-1.3
Recreation <sup>4</sup> .....	5.797	0.1	0.007	0.37	S-Aug.2018	0.1
Video and audio <sup>4</sup> .....	1.537	2.1	0.032	0.52	S-Jun.2020	2.0
Pets, pet products and services <sup>4</sup> .....	1.192	1.1	0.013	0.50	L-Aug.2020	1.3
Photography <sup>4</sup> .....	0.071	3.2	0.002	1.20	—	—
Food and beverages.....	15.157	3.7	0.547	0.14	S-Nov.2020	3.7
Domestically produced farm food.....	6.489	3.6	0.230	0.27	S-Mar.2020	1.1
Other services.....	11.773	1.5	0.172	0.22	S-Sep.2019	1.3
Apparel less footwear.....	2.019	-2.7	-0.058	0.97	L-Mar.2020	-1.9
Fuels and utilities.....	4.387	2.1	0.092	0.29	S-Nov.2020	1.8
Household energy.....	3.280	1.6	0.053	0.38	S-Nov.2020	1.3
Medical care.....	8.870	1.9	0.172	0.51	L-Nov.2020	2.4
Transportation.....	15.160	-1.3	-0.200	0.19	L-Feb.2020	1.7
Private transportation.....	14.055	-0.2	-0.022	0.19	L-Feb.2020	1.7
New and used motor vehicles <sup>4</sup> .....	7.525	4.1	0.294	0.26	S-Sep.2020	3.9
Utilities and public transportation.....	8.908	0.6	0.058	0.20	S-Sep.2020	0.5
Household furnishings and operations.....	4.682	2.9	0.132	0.36	S-Nov.2020	2.7
Other goods and services.....	3.159	2.1	0.066	0.34	S-Nov.2020	1.7
Personal care.....	2.551	1.1	0.027	0.41	S-Nov.2020	1.1

<sup>1</sup> The 'effect' of an item category is a measure of that item's contribution to the All items price change. For example, if the Food index had an effect of 0.40, and the All items index rose 1.2 percent, then the increase in food prices contributed 0.40 / 1.2, or 33.3 percent, to that All items increase. Said another way, had food prices been unchanged for that year the change in the All items index would have been 1.2 percent minus 0.40, or 0.8 percent. Effects can be negative as well. For example, if the effect of food was a negative 0.1, and the All items index rose 0.5 percent, the All items index actually would have been 0.1 percent higher (or 0.6 percent) had food prices been unchanged. Since food prices fell while prices overall were rising, the contribution of food to the All items price change was negative (in this case, -0.1 / 0.5, or minus 20 percent).

<sup>2</sup> A statistic's margin of error is often expressed as its point estimate plus or minus two standard errors. For example, if a CPI category rose 2.6 percent, and its standard error was 0.25 percent, the margin of error on this item's 12-month percent change would be 2.6 percent, plus or minus 0.5 percent.

<sup>3</sup> If the current 12-month percent change is greater than the previous published 12-month percent change, then this column identifies the closest prior month with a 12-month percent change as (L)arge as or (L)arger than the current 12-month change. If the current 12-month percent change is smaller than the previous published 12-month percent change, the most recent month with a change as (S)mall or (S)maller than the current month change is identified. If the current and previous published 12-month percent changes are equal, a dash will appear. Standard numerical comparison is used. For example, 2.0% is greater than 0.6%, -4.4% is less than -2.0%, and -2.0% is less than 0.0%. Note that a (L)arger change can be a smaller decline, for example, a -0.2% change is larger than a -0.4% change, but still represents a decline in the price index. Likewise, (S)maller changes can be increases, for example, a 0.6% change is smaller than 0.8%, but still represents an increase in the price index. In this context, a -0.2% change is considered to be smaller than a 0.0% change.

<sup>4</sup> Indexes on a December 1997=100 base.

<sup>5</sup> Special indexes based on a substantially smaller sample. These series do not contribute to the all items index aggregation and therefore do not have a relative importance or effect.

<sup>6</sup> Indexes on a December 2007=100 base.

<sup>7</sup> Indexes on a December 2005=100 base.

<sup>8</sup> Indexes on a December 1986=100 base.

<sup>9</sup> Indexes on a December 1993=100 base.

<sup>10</sup> Indexes on a December 2009=100 base.

<sup>11</sup> Indexes on a December 1990=100 base.

<sup>12</sup> Indexes on a December 1983=100 base.

<sup>13</sup> Indexes on a December 2001=100 base.

<sup>14</sup> Indexes on a December 1982=100 base.

<sup>15</sup> Indexes on a December 1996=100 base.

<sup>16</sup> Indexes on a December 1988=100 base.