



**Transmission of material in this release is embargoed until
 8:30 a.m. (EDT) July 11, 2019**

USDL-19-1250

Technical information: (202) 691-7000 • cpi_info@bls.gov • www.bls.gov/cpi
 Media Contact: (202) 691-5902 • PressOffice@bls.gov

CONSUMER PRICE INDEX – JUNE 2019

The Consumer Price Index for All Urban Consumers (CPI-U) increased 0.1 percent in June on a seasonally adjusted basis, the same increase as in May, the U.S. Bureau of Labor Statistics reported today. Over the last 12 months, the all items index increased 1.6 percent before seasonal adjustment.

Increases in the indexes for shelter, apparel, and used cars and trucks more than offset declines in energy indexes to result in the seasonally adjusted all items monthly increase in June. The energy index fell 2.3 percent as all of the major energy component indexes declined. The food index was unchanged as the index for food away from home rose but the index for food at home declined.

The index for all items less food and energy rose 0.3 in June, its largest monthly increase since January 2018. Along with the indexes for shelter, used cars and trucks, and apparel, the indexes for household furnishings and operations, medical care, and motor vehicle insurance were among the indexes that increased in June. The indexes for recreation, airline fares, and personal care all declined in June.

The all items index increased 1.6 percent for the 12 months ending June, a smaller increase than the 1.8-percent rise for the period ending May. The index for all items less food and energy rose 2.1 percent over the last 12 months, and the food index increased 1.9 percent. The energy index, in contrast, declined 3.4 percent over the last 12 months.

Chart 1. One-month percent change in CPI for All Urban Consumers (CPI-U), seasonally adjusted, June 2018 - June 2019
 Percent change

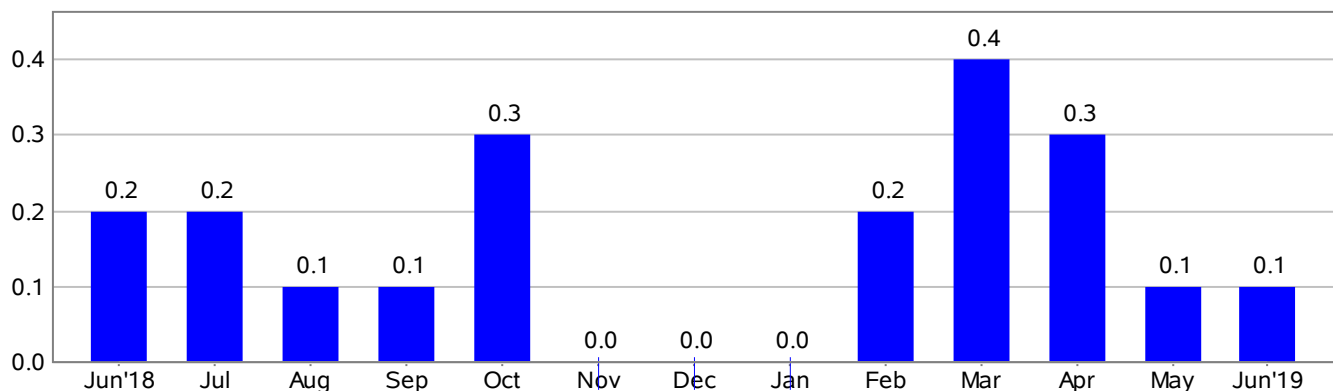


Chart 2. 12-month percent change in CPI for All Urban Consumers (CPI-U), not seasonally adjusted, June 2018 - June 2019

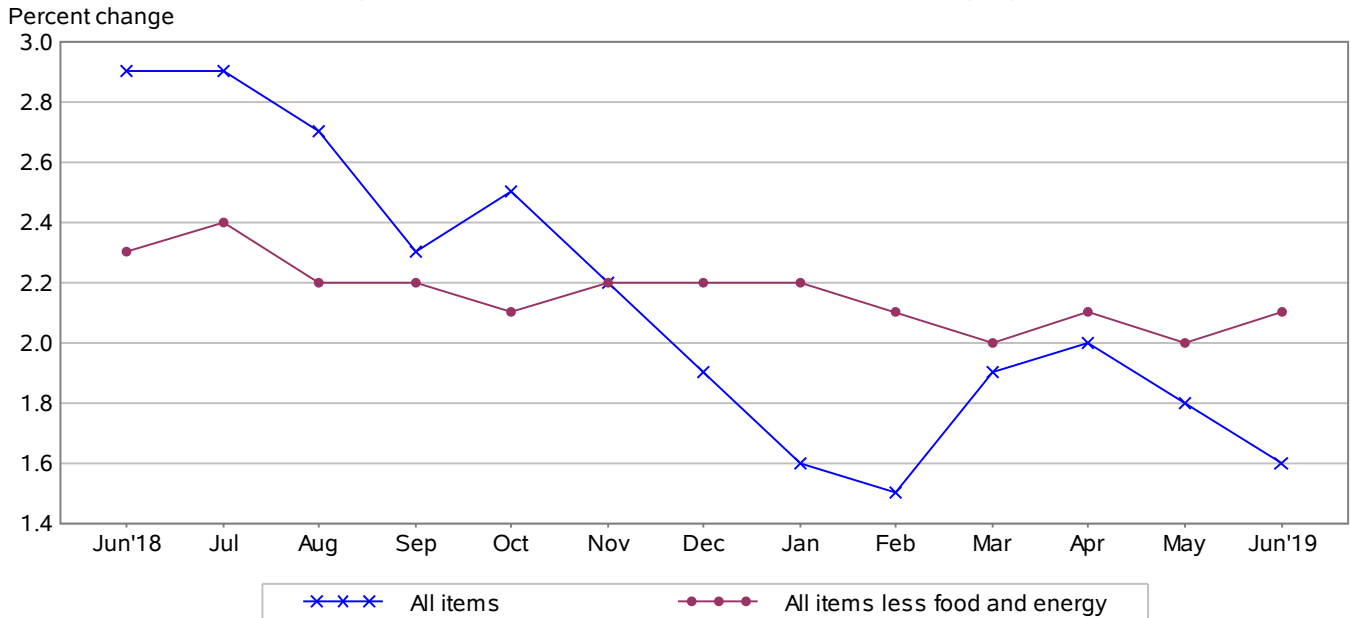


Table A. Percent changes in CPI for All Urban Consumers (CPI-U): U.S. city average

	Seasonally adjusted changes from preceding month							Un-adjusted 12-mos. ended June 2019
	Dec. 2018	Jan. 2019	Feb. 2019	Mar. 2019	Apr. 2019	May 2019	June 2019	
All items0	.0	.2	.4	.3	.1	.1	1.6
Food3	.2	.4	.3	-.1	.3	.0	1.9
Food at home3	.1	.4	.4	-.5	.3	-.2	.9
Food away from home ¹4	.3	.4	.2	.3	.2	.3	3.1
Energy	-2.6	-3.1	.4	3.5	2.9	-.6	-2.3	-3.4
Energy commodities	-5.7	-5.3	1.5	6.2	5.4	-.4	-3.5	-5.4
Gasoline (all types)	-5.8	-5.5	1.5	6.5	5.7	-.5	-3.6	-5.4
Fuel oil	-9.4	-1.3	2.6	2.1	1.3	-.3	-2.3	-5.6
Energy services	1.5	-.5	-.8	.3	-.1	-.8	-.7	-.7
Electricity4	-.6	-.3	.4	.0	-.8	-.8	-.3
Utility (piped) gas service	5.1	-.3	-2.4	-.1	-.8	-1.0	-.3	-2.1
All items less food and energy2	.2	.1	.1	.1	.1	.3	2.1
Commodities less food and energy								
commodities0	.4	-.2	-.2	-.3	-.1	.4	.2
New vehicles0	.2	-.2	.4	.1	.1	.1	.6
Used cars and trucks	-.5	.1	-.7	-.4	-1.3	-1.4	1.6	1.2
Apparel0	1.1	.3	-1.9	-.8	.0	1.1	-1.3
Medical care commodities	-.4	.1	-1.0	.4	.9	-.4	-.2	-1.5
Services less energy services2	.2	.2	.3	.3	.2	.3	2.8
Shelter3	.3	.3	.4	.4	.2	.3	3.5
Transportation services	-.1	-.2	-.1	.0	.1	.1	.0	.9
Medical care services4	.3	.0	.3	.2	.5	.4	2.8

¹ Not seasonally adjusted.

Food

The food index was unchanged in June. The index for food at home declined 0.2 percent after increasing 0.3 percent in May. Four of the six major grocery store food group indexes declined in June. The index for meats, poultry, fish, and eggs, which rose 0.8 percent in May, fell 0.7 percent in June as the index for beef fell 1.3 percent. The indexes for cereals and bakery products and for nonalcoholic beverages both fell 0.6 percent in June after rising in May. The index for fruits and vegetables fell 0.5 percent in June, its third consecutive decline.

In contrast to these declines, the index for other food at home rose 0.7 percent in June after being unchanged in May. The index for dairy and related products rose 0.3 percent in June, its fifth consecutive monthly increase. The index for food away from home rose 0.3 percent in June after a 0.2-percent increase in May. The index for full service meals rose 0.6 percent in June while the index for limited service meals was unchanged.

Over the last 12 months, the food at home index increased 0.9 percent. All six major grocery store food group indexes rose over the span, with increases ranging from 0.3 percent (meats, poultry, fish, and eggs) to 2.3 percent (nonalcoholic beverages). The index for food away from home rose 3.1 percent over the last 12 months, with the index for full service meals rising 3.3 percent and the index for limited service meals increasing 3.0 percent.

Energy

The energy index declined 2.3 percent in June following a 0.6-percent decline in May. The gasoline index, which fell 0.5 percent in May, declined 3.6 percent in June. (Before seasonal adjustment, gasoline prices fell 4.9 percent in June.) The index for electricity fell 0.8 percent in June, the same decline as the prior month, and the index for natural gas fell 0.3 percent.

The energy index decreased 3.4 percent over the past 12 months, with its major component indexes all falling over the period. The gasoline index declined 5.4 percent over the past year and the fuel oil index decreased 5.6 percent. The index for natural gas fell 2.1 percent, and the index for electricity decreased 0.3 percent.

All items less food and energy

The index for all items less food and energy increased 0.3 percent in June. The shelter index rose 0.3 percent in June following a 0.2-percent increase in May. The index for rent increased 0.4 percent and the index for owners' equivalent rent increased 0.3 percent. The index for used cars and trucks rose 1.6 percent in June after declining in recent months. The apparel index, which was unchanged in May, increased 1.1 percent in June. The index for household furnishings and operations rose 0.8 percent in June, its largest increase since February 1991, as the index for gardening and lawncare services rose 6.1 percent.

The medical care index rose 0.3 percent in June, with its component indexes mixed. The index for dental services rose 1.1 percent and the index for physicians' services increased 0.1 percent, while the prescription drugs index fell 0.6 percent and the hospital services index declined 0.1 percent. Also increasing in June were the indexes for motor vehicle insurance, education, new vehicles, communication, and alcoholic beverages.

In contrast to these increases, the recreation index declined 0.2 percent in June following a 0.3-percent decline in May. The index for airline fares fell 0.9 percent and the index for personal care declined 0.2 percent in June; both indexes increased in May.

The index for all items less food and energy rose 2.1 percent over the past 12 months; the 12-month change has been in the range of 2.0 to 2.2 percent for 11 months in a row. The shelter index rose 3.5 percent over the year, the largest 12-month change since the period ending July 2018.

Not seasonally adjusted CPI measures

The Consumer Price Index for All Urban Consumers (CPI-U) increased 1.6 percent over the last 12 months to an index level of 256.143 (1982-84=100). For the month, the index was unchanged prior to seasonal adjustment.

The Consumer Price Index for Urban Wage Earners and Clerical Workers (CPI-W) increased 1.4 percent over the last 12 months to an index level of 249.747 (1982-84=100). For the month, the index was unchanged prior to seasonal adjustment.

The Chained Consumer Price Index for All Urban Consumers (C-CPI-U) increased 1.5 percent over the last 12 months. For the month, the index was unchanged on a not seasonally adjusted basis. Please note that the indexes for the past 10 to 12 months are subject to revision.

The Consumer Price Index for July 2019 is scheduled to be released on Tuesday, August 13, 2019 at 8:30 a.m. (EDT).

Technical Note

Brief Explanation of the CPI

The Consumer Price Index (CPI) measures the change in prices paid by consumers for goods and services. The CPI reflects spending patterns for each of two population groups: all urban consumers and urban wage earners and clerical workers. The all urban consumer group represents about 93 percent of the total U.S. population. It is based on the expenditures of almost all residents of urban or metropolitan areas, including professionals, the self-employed, the poor, the unemployed, and retired people, as well as urban wage earners and clerical workers. Not included in the CPI are the spending patterns of people living in rural nonmetropolitan areas, farming families, people in the Armed Forces, and those in institutions, such as prisons and mental hospitals. Consumer inflation for all urban consumers is measured by two indexes, namely, the Consumer Price Index for All Urban Consumers (CPI-U) and the Chained Consumer Price Index for All Urban Consumers (C-CPI-U).

The Consumer Price Index for Urban Wage Earners and Clerical Workers (CPI-W) is based on the expenditures of households included in the CPI-U definition that meet two requirements: more than one-half of the household's income must come from clerical or wage occupations, and at least one of the household's earners must have been employed for at least 37 weeks during the previous 12 months. The CPI-W population represents about 29 percent of the total U.S. population and is a subset of the CPI-U population.

The CPIs are based on prices of food, clothing, shelter, fuels, transportation, doctors' and dentists' services, drugs, and other goods and services that people buy for day-to-day living. Prices are collected each month in 75 urban areas across the country from about 6,000 housing units and approximately 22,000 retail establishments (department stores, supermarkets, hospitals, filling stations, and other types of stores and service establishments). All taxes directly associated with the purchase and use of items are included in the index. Prices of fuels and a few other items are obtained every month in all 75 locations. Prices of most other commodities and services are collected every month in the three largest geographic areas and every other month in other areas. Prices of most goods and services are obtained by personal visits or telephone calls by the Bureau's trained representatives.

In calculating the index, price changes for the various items in each location are aggregated using weights, which represent their importance in the spending of the appropriate population group. Local data are then combined to obtain a U.S. city average. For the CPI-U and CPI-W, separate indexes are also published by size of city, by region of the country, for cross-classifications of regions and population-size classes, and for 23 selected local areas. Area indexes do not measure differences in the level of prices among cities; they only measure the average change in prices for each area since the base period. For the C-CPI-U, data are issued only at the national level. The CPI-U and CPI-W are considered final when released, but the C-CPI-U is issued in preliminary form and subject to three subsequent quarterly revisions.

The index measures price change from a designed reference date. For most of the CPI-U and the CPI-W, the reference base is 1982-84 equals 100. The reference base for the C-CPI-U is December 1999 equals 100. An increase of 7 percent from the reference base, for example, is shown as 107.000. Alternatively, that relationship can also be expressed as the price of a base period market basket of goods and services rising from \$100 to \$107.

Sampling Error in the CPI

The CPI is a statistical estimate that is subject to sampling error because it is based upon a sample of retail prices and not the complete universe of all prices. BLS calculates and publishes estimates of the 1-month, 2-month, 6-month, and 12-month percent change standard errors annually for the CPI-U. These standard error estimates can be used to construct confidence intervals for hypothesis testing. For

example, the estimated standard error of the 1-month percent change is 0.03 percent for the U.S. all items CPI. This means that if we repeatedly sample from the universe of all retail prices using the same methodology, and estimate a percentage change for each sample, then 95 percent of these estimates will be within 0.06 percent of the 1-month percentage change based on all retail prices. For example, for a 1-month change of 0.2 percent in the all items CPI-U, we are 95 percent confident that the actual percent change based on all retail prices would fall between 0.14 and 0.26 percent. For the latest data, including information on how to use the estimates of standard error, see <https://www.bls.gov/cpi/tables/variance-estimates/home.htm>.

Calculating Index Changes

Movements of the indexes from 1 month to another are usually expressed as percent changes rather than changes in index points, because index point changes are affected by the level of the index in relation to its base period, while percent changes are not. The following table shows an example of using index values to calculate percent changes:

	Item A	Item B	Item C
Year I	112.500	225.000	110.000
Year II	121.500	243.000	128.000
Change in index points	9.000	18.000	18.000
Percent change	$9.0/112.500 \times 100 = 8.0$	$18.0/225.000 \times 100 = 8.0$	$18.0/110.000 \times 100 = 16.4$

Use of Seasonally Adjusted and Unadjusted Data

The Consumer Price Index (CPI) produces both unadjusted and seasonally adjusted data. Seasonally adjusted data are computed using seasonal factors derived by the X-13ARIMA-SEATS seasonal adjustment method. These factors are updated each February, and the new factors are used to revise the previous 5 years of seasonally adjusted data. The factors are available at www.bls.gov/cpi/tables/seasonal-adjustment/seasonal-factors-2019.pdf. For more information on data revision scheduling, please see the Factsheet on Seasonal Adjustment at www.bls.gov/cpi/seasonal-adjustment/questions-and-answers.htm and the Timeline of Seasonal Adjustment Methodological Changes at www.bls.gov/cpi/seasonal-adjustment/timeline-seasonal-adjustment-methodology-changes.htm.

For analyzing short-term price trends in the economy, seasonally adjusted changes are usually preferred since they eliminate the effect of changes that normally occur at the same time and in about the same magnitude every year—such as price movements resulting from weather events, production cycles, model changeovers, holidays, and sales. This allows data users to focus on changes that are not typical for the time of year. The unadjusted data are of primary interest to consumers concerned about the prices they actually pay. Unadjusted data are also used extensively for escalation purposes. Many collective bargaining contract agreements and pension plans, for example, tie compensation changes to the Consumer Price Index before adjustment for seasonal variation. BLS advises against the use of seasonally adjusted data in escalation agreements because seasonally adjusted series are revised annually.

Intervention Analysis

The Bureau of Labor Statistics uses intervention analysis seasonal adjustment for some CPI series. Sometimes extreme values or sharp movements can distort the underlying seasonal pattern of price change. Intervention analysis seasonal adjustment is a process by which the distortions caused by such unusual events are estimated and removed from the data prior to calculation of seasonal factors. The resulting seasonal factors, which more accurately represent the seasonal pattern, are then applied to the unadjusted data.

For example, this procedure was used for the motor fuel series to offset the effects of the 2009 return to normal pricing after the worldwide economic downturn in 2008. Retaining this outlier data during seasonal factor calculation would distort the computation of the seasonal portion of the time series data for motor fuel, so it was estimated and removed from the data prior to seasonal adjustment. Following that, seasonal factors were calculated based on this “prior adjusted” data. These seasonal factors represent a clearer picture of the seasonal pattern in the data. The last step is for motor fuel seasonal factors to be applied to the unadjusted data.

For the seasonal factors introduced for January 2019, BLS adjusted 51 series using intervention analysis seasonal adjustment, including selected food and beverage items, motor fuels, electricity, and vehicles.

Revision of Seasonally Adjusted Indexes

Seasonally adjusted data, including the U.S. city average all items index levels, are subject to revision for up to 5 years after their original release. Every year, economists in the CPI calculate new seasonal factors for seasonally adjusted series and apply them to the last 5 years of data. Seasonally adjusted indexes beyond the last 5 years of data are considered to be final and not subject to revision. For January 2019, revised seasonal factors and seasonally adjusted indexes for 2014 to 2018 were calculated and published. For series which are directly adjusted using the Census X-13ARIMA-SEATS seasonal adjustment software, the seasonal factors for 2018 will be applied to data for 2019 to produce the seasonally adjusted 2019 indexes. Series which are indirectly seasonally adjusted by summing seasonally adjusted component series have seasonal factors which are derived and are therefore not available in advance.

Determining Seasonal Status

Each year the seasonal status of every series is reevaluated based upon certain statistical criteria. Using these criteria, BLS economists determine whether a series should change its status from "not seasonally adjusted" to "seasonally adjusted", or vice versa. If any of the 81 components of the U.S. city average all items index change their seasonal adjustment status from seasonally adjusted to not seasonally adjusted, not seasonally adjusted data will be used in the aggregation of the dependent series for the last 5 years, but the seasonally adjusted indexes before that period will not be changed. Twenty-nine of the 81 components of the U.S. city average all items index are not seasonally adjusted for 2019.

Contact Information

For additional information about the CPI visit www.bls.gov/cpi or contact the CPI Information and Analysis Section at 202-691-7000 or cpi_info@bls.gov.

For additional information on seasonal adjustment in the CPI visit www.bls.gov/cpi/seasonal-adjustment/home.htm or contact the CPI seasonal adjustment section at 202-691-6968 or cpiseas@bls.gov.

Information from this release will be made available to sensory impaired individuals upon request. Voice phone: 202-691-5200; Federal Relay Service: 1-800-877-8339.

Table 1. Consumer Price Index for All Urban Consumers (CPI-U): U.S. city average, by expenditure category, June 2019

[1982-84=100, unless otherwise noted]

Expenditure category	Relative importance May 2019	Unadjusted indexes			Unadjusted percent change		Seasonally adjusted percent change		
		Jun. 2018	May 2019	Jun. 2019	Jun. 2018-Jun. 2019	May 2019-Jun. 2019	Mar. 2019-Apr. 2019	Apr. 2019-May 2019	May 2019-Jun. 2019
All items.....	100.000	251.989	256.092	256.143	1.6	0.0	0.3	0.1	0.1
Food.....	13.237	253.231	258.110	258.064	1.9	0.0	-0.1	0.3	0.0
Food at home.....	7.212	239.158	242.145	241.407	0.9	-0.3	-0.5	0.3	-0.2
Cereals and bakery products.....	0.955	273.682	277.795	276.891	1.2	-0.3	-0.1	0.4	-0.6
Meats, poultry, fish, and eggs.....	1.586	248.609	250.356	249.231	0.3	-0.4	-0.2	0.8	-0.7
Dairy and related products.....	0.719	216.126	217.841	217.433	0.6	-0.2	0.1	0.7	0.3
Fruits and vegetables.....	1.278	295.523	302.352	298.611	1.0	-1.2	-0.9	-0.8	-0.5
Nonalcoholic beverages and beverage materials.....	0.867	166.431	171.260	170.230	2.3	-0.6	-0.9	1.2	-0.6
Other food at home.....	1.807	210.259	210.815	212.056	0.9	0.6	-0.6	0.0	0.7
Food away from home ¹	6.024	275.808	283.394	284.316	3.1	0.3	0.3	0.2	0.3
Energy.....	7.903	229.137	225.773	221.373	-3.4	-1.9	2.9	-0.6	-2.3
Energy commodities.....	4.595	260.848	259.310	246.818	-5.4	-4.8	5.4	-0.4	-3.5
Fuel oil.....	0.113	293.685	289.711	277.244	-5.6	-4.3	1.3	-0.3	-2.3
Motor fuel.....	4.411	257.041	255.584	243.163	-5.4	-4.9	5.6	-0.5	-3.6
Gasoline (all types).....	4.321	255.885	254.551	242.043	-5.4	-4.9	5.7	-0.5	-3.6
Energy services.....	3.308	207.631	202.101	206.219	-0.7	2.0	-0.1	-0.8	-0.7
Electricity.....	2.578	218.591	212.326	217.947	-0.3	2.6	0.0	-0.8	-0.8
Utility (piped) gas service.....	0.730	172.167	168.826	168.628	-2.1	-0.1	-0.8	-1.0	-0.3
All items less food and energy.....	78.860	257.697	262.590	263.177	2.1	0.2	0.1	0.1	0.3
Commodities less food and energy.....	19.350	144.237	144.457	144.461	0.2	0.0	-0.3	-0.1	0.4
Apparel.....	2.997	125.382	124.429	123.749	-1.3	-0.5	-0.8	0.0	1.1
New vehicles.....	3.691	146.562	147.659	147.417	0.6	-0.2	0.1	0.1	0.1
Used cars and trucks.....	2.359	139.090	138.888	140.823	1.2	1.4	-1.3	-1.4	1.6
Medical care commodities.....	1.687	385.121	381.066	379.462	-1.5	-0.4	0.9	-0.4	-0.2
Alcoholic beverages.....	0.958	248.844	252.101	252.538	1.5	0.2	-0.2	0.4	0.3
Tobacco and smoking products.....	0.664	1,060.067	1,108.299	1,109.099	4.6	0.1	-0.1	0.4	0.1
Services less energy services.....	59.511	328.068	336.204	337.197	2.8	0.3	0.3	0.2	0.3
Shelter.....	33.208	307.521	317.188	318.300	3.5	0.4	0.4	0.2	0.3
Rent of primary residence.....	7.901	318.318	329.333	330.648	3.9	0.4	0.4	0.2	0.4
Owners' equivalent rent of residences ²	23.900	314.472	324.143	325.189	3.4	0.3	0.3	0.3	0.3
Medical care services.....	6.961	518.307	531.566	532.956	2.8	0.3	0.2	0.5	0.4
Physicians' services.....	1.710	380.991	382.436	382.702	0.4	0.1	0.2	0.1	0.1
Hospital services ³	2.302	333.408	335.966	335.078	0.5	-0.3	-0.5	0.5	-0.1
Transportation services.....	5.936	323.646	326.397	326.667	0.9	0.1	0.1	0.1	0.0
Motor vehicle maintenance and repair ¹	1.125	285.753	294.586	295.670	3.5	0.4	0.4	-0.2	0.4
Motor vehicle insurance.....	2.350	565.284	568.301	569.079	0.7	0.1	-0.2	-0.4	0.3
Airline fares.....	0.739	278.937	283.275	283.001	1.5	-0.1	-0.1	2.0	-0.9

¹ Not seasonally adjusted.

² Indexes on a December 1982=100 base.

³ Indexes on a December 1996=100 base.

Table 2. Consumer Price Index for All Urban Consumers (CPI-U): U.S. city average, by detailed expenditure category, June 2019

[1982-84=100, unless otherwise noted]

Expenditure category	Relative importance May 2019	Unadjusted percent change		Seasonally adjusted percent change		
		Jun. 2018- Jun. 2019	May 2019- Jun. 2019	Mar. 2019- Apr. 2019	Apr. 2019- May 2019	May 2019- Jun. 2019
All items.....	100.000	1.6	0.0	0.3	0.1	0.1
Food.....	13.237	1.9	0.0	-0.1	0.3	0.0
Food at home.....	7.212	0.9	-0.3	-0.5	0.3	-0.2
Cereals and bakery products.....	0.955	1.2	-0.3	-0.1	0.4	-0.6
Cereals and cereal products.....	0.306	1.0	0.8	-1.0	-0.3	0.6
Flour and prepared flour mixes.....	0.040	-1.0	-0.2	-1.1	0.1	0.6
Breakfast cereal ¹	0.148	1.6	0.5	-0.1	-0.6	0.5
Rice, pasta, cornmeal ¹	0.117	1.0	1.3	-1.5	-0.2	1.3
Rice ^{1, 2, 3}		1.2	1.3	1.3	-1.9	1.3
Bakery products ¹	0.650	1.2	-0.8	0.0	0.7	-0.8
Bread ^{1, 2}	0.192	1.5	-1.0	0.7	-0.1	-1.0
White bread ^{1, 3}		1.8	-0.9	1.2	-0.2	-0.9
Bread other than white ^{1, 3}		1.9	-1.3	-0.1	0.3	-1.3
Fresh biscuits, rolls, muffins ²	0.091	0.2	-1.6	-0.6	1.3	-1.5
Cakes, cupcakes, and cookies.....	0.162	0.7	-0.4	0.5	1.1	-0.4
Cookies ³		-0.8	-1.0	0.0	1.9	-0.7
Fresh cakes and cupcakes ^{1, 3}		3.1	0.4	0.0	0.0	0.4
Other bakery products.....	0.205	1.9	-0.6	-0.7	1.5	-1.0
Fresh sweetrolls, coffeecakes, doughnuts ^{1, 3}		5.7	-1.3	-0.2	1.2	-1.3
Crackers, bread, and cracker products ³		2.0	-0.3	-0.7	2.5	-0.7
Frozen and refrigerated bakery products, pies, tarts, turnovers ³		-0.5	-0.7	-0.2	-0.1	-0.6
Meats, poultry, fish, and eggs.....	1.586	0.3	-0.4	-0.2	0.8	-0.7
Meats, poultry, and fish.....	1.504	1.0	-0.3	0.0	1.0	-0.7
Meats.....	0.943	1.3	-0.3	0.1	1.2	-0.9
Beef and veal.....	0.430	0.6	-0.3	0.1	0.8	-1.3
Uncooked ground beef ¹	0.169	-0.8	-1.3	1.1	0.7	-1.3
Uncooked beef roasts ^{1, 2}	0.063	4.1	2.5	-0.4	2.9	2.5
Uncooked beef steaks ²	0.161	0.8	-0.5	-1.2	1.1	-1.8
Uncooked other beef and veal ^{1, 2}	0.037	0.7	0.5	1.1	-0.9	0.5
Pork.....	0.296	2.0	-0.2	-0.3	2.4	-0.9
Bacon, breakfast sausage, and related products ²	0.132	4.5	1.7	-0.6	2.4	1.8
Bacon and related products ³		7.0	1.7	-1.1	2.6	2.4
Breakfast sausage and related products ^{2, 3}		0.8	1.0	-1.4	2.1	0.4
Ham.....	0.054	-1.4	-0.8	0.2	1.7	-4.0
Ham, excluding canned ³		-2.7	-0.9	0.4	1.5	-4.8
Pork chops ¹	0.044	-1.0	-4.1	2.7	2.6	-4.1
Other pork including roasts, steaks, and ribs ²	0.066	1.7	-0.8	-1.2	2.4	-1.1
Other meats.....	0.217	1.8	-0.4	0.7	0.4	0.0
Frankfurters ³		3.8	-0.1	0.9	0.6	1.5
Lunchmeats ^{2, 3}		1.7	0.1	0.6	0.4	0.9
Lamb and organ meats ^{1, 3}						
Lamb and mutton ^{1, 2, 3}						
Poultry ¹	0.310	-0.4	0.2	0.8	-0.1	0.2
Chicken ^{1, 2}	0.255	-0.3	-0.1	0.9	-0.2	-0.1
Fresh whole chicken ^{1, 3}		1.5	2.0	1.1	0.1	2.0
Fresh and frozen chicken parts ^{1, 3}		-1.2	-1.0	0.9	-0.5	-1.0
Other uncooked poultry including turkey ²	0.055	-0.8	1.4	0.8	-0.5	1.1
Fish and seafood.....	0.251	1.7	-0.7	-1.4	1.5	-0.9
Fresh fish and seafood ²	0.129	1.2	-0.5	-1.8	1.9	-1.1
Processed fish and seafood ²	0.122	2.1	-1.0	-1.0	1.0	-0.7
Shelf stable fish and seafood ^{1, 3}		4.6	-0.5	3.7	0.8	-0.5

See footnotes at end of table.

Table 2. Consumer Price Index for All Urban Consumers (CPI-U): U.S. city average, by detailed expenditure category, June 2019 — Continued
 [1982-84=100, unless otherwise noted]

Expenditure category	Relative importance May 2019	Unadjusted percent change		Seasonally adjusted percent change		
		Jun. 2018- Jun. 2019	May 2019- Jun. 2019	Mar. 2019- Apr. 2019	Apr. 2019- May 2019	May 2019- Jun. 2019
Frozen fish and seafood ³		1.7	-1.4	-1.6	0.8	-0.7
Eggs.....	0.083	-12.4	-3.7	-3.2	-2.2	-2.0
Dairy and related products.....	0.719	0.6	-0.2	0.1	0.7	0.3
Milk ²	0.199	1.9	0.1	0.9	-0.2	0.5
Fresh whole milk ³		2.7	1.0	1.1	-0.8	1.4
Fresh milk other than whole ^{2, 3}		1.9	-0.3	0.3	0.3	0.1
Cheese and related products ¹	0.231	-1.2	0.6	0.0	0.7	0.6
Ice cream and related products.....	0.102	-1.1	-2.8	0.7	0.7	-2.2
Other dairy and related products ^{1, 2}	0.187	2.4	-0.1	-0.5	0.9	-0.1
Fruits and vegetables.....	1.278	1.0	-1.2	-0.9	-0.8	-0.5
Fresh fruits and vegetables.....	1.009	0.9	-1.7	-0.7	-1.0	-0.7
Fresh fruits.....	0.534	-1.9	-2.1	-0.9	-1.3	0.0
Apples.....	0.077	3.4	0.7	1.1	-1.2	-2.0
Bananas ¹	0.078	0.3	0.5	-1.9	0.9	0.5
Citrus fruits ²	0.150	-5.0	0.8	-3.7	-2.4	-1.8
Oranges, including tangerines ³		-6.7	2.4	-4.4	-0.7	-3.0
Other fresh fruits ²	0.229	-2.2	-5.7	0.6	-1.7	2.6
Fresh vegetables.....	0.474	4.1	-1.2	-0.5	-0.7	-1.4
Potatoes.....	0.080	2.0	-2.4	-1.4	0.3	-3.0
Lettuce.....	0.061	9.1	-3.2	-1.3	-7.9	-0.9
Tomatoes ¹	0.073	-0.9	1.4	-2.7	-4.0	1.4
Other fresh vegetables.....	0.260	5.1	-1.2	-0.4	0.0	-0.8
Processed fruits and vegetables ²	0.270	1.7	0.4	-1.4	0.2	0.3
Canned fruits and vegetables ²	0.152	3.9	-0.4	-2.2	1.2	-0.2
Canned fruits ^{2, 3}		2.0	-0.3	-2.9	-0.5	0.0
Canned vegetables ^{2, 3}		5.3	-0.1	-1.1	1.9	0.1
Frozen fruits and vegetables ²	0.076	0.2	1.8	-1.4	-0.3	1.3
Frozen vegetables ³		2.3	2.6	-0.7	-1.1	2.1
Other processed fruits and vegetables including dried ²	0.043	-3.1	0.6	-1.4	0.4	0.1
Dried beans, peas, and lentils ^{1, 2, 3}		-6.2	0.5	1.0	-1.5	0.5
Nonalcoholic beverages and beverage materials.....	0.867	2.3	-0.6	-0.9	1.2	-0.6
Juices and nonalcoholic drinks ²	0.617	2.9	-1.0	-1.0	1.2	-1.0
Carbonated drinks.....	0.261	3.2	-1.9	-0.5	1.0	-2.0
Frozen noncarbonated juices and drinks ^{1, 2}	0.008	-0.2	-1.1	-1.0	0.1	-1.1
Nonfrozen noncarbonated juices and drinks ²	0.348	2.7	-0.2	-1.3	1.2	-0.1
Beverage materials including coffee and tea ²	0.249	0.9	0.3	0.1	0.2	1.0
Coffee.....	0.159	0.3	1.2	-0.4	-0.3	1.8
Roasted coffee ³		0.2	1.6	0.1	-0.8	2.2
Instant coffee ^{1, 3}		3.5	0.9	1.1	0.2	0.9
Other beverage materials including tea ^{1, 2}	0.090	1.9	-1.3	1.2	0.5	-1.3
Other food at home.....	1.807	0.9	0.6	-0.6	0.0	0.7
Sugar and sweets ¹	0.275	2.1	1.3	-1.4	0.1	1.3
Sugar and sugar substitutes.....	0.042	-0.7	-0.4	-0.3	0.5	-0.6
Candy and chewing gum ^{1, 2}	0.181	3.6	1.9	-1.6	0.2	1.9
Other sweets ²	0.052	-0.8	0.5	-2.3	-0.7	0.4
Fats and oils.....	0.211	0.1	-0.8	-2.2	1.8	-0.5
Butter and margarine ²	0.060	1.4	-0.2	-2.9	1.2	0.1
Butter ³		0.8	-1.6	-3.9	2.4	-1.3
Margarine ³		1.5	0.7	-0.3	-0.6	0.8
Salad dressing ²	0.051	2.9	-0.3	-1.7	2.5	0.8
Other fats and oils including peanut butter ²	0.100	-2.1	-1.4	-1.9	1.8	-1.4
Peanut butter ^{1, 2, 3}		-0.5	3.2	-1.4	-0.3	3.2
Other foods.....	1.321	0.7	0.7	-0.2	-0.3	0.7

See footnotes at end of table.

Table 2. Consumer Price Index for All Urban Consumers (CPI-U): U.S. city average, by detailed expenditure category, June 2019 — Continued
 [1982-84=100, unless otherwise noted]

Expenditure category	Relative importance May 2019	Unadjusted percent change		Seasonally adjusted percent change		
		Jun. 2018- Jun. 2019	May 2019- Jun. 2019	Mar. 2019- Apr. 2019	Apr. 2019- May 2019	May 2019- Jun. 2019
Soups.....	0.083	0.3	0.3	-0.1	0.7	0.0
Frozen and freeze dried prepared foods ¹	0.230	-0.1	0.4	1.6	-0.7	0.4
Snacks ¹	0.304	0.5	0.7	-0.3	-0.6	0.7
Spices, seasonings, condiments, sauces.....	0.266	0.8	0.8	-1.1	0.1	0.8
Salt and other seasonings and spices ^{2, 3}		1.0	1.5	-0.9	0.1	1.3
Olives, pickles, relishes ^{1, 2, 3}		0.3	0.1			0.1
Sauces and gravies ^{2, 3}		0.7	0.6	-0.4	0.5	0.5
Other condiments ³		0.3	1.8	-1.0	-1.7	1.8
Baby food ^{1, 2}	0.050	4.8	1.0	1.3	-0.7	1.0
Other miscellaneous foods ^{1, 2}	0.388	1.0	0.7	0.9	-1.1	0.7
Prepared salads ^{1, 3, 4}		-0.6	0.7	0.4	-2.7	0.7
Food away from home ¹	6.024	3.1	0.3	0.3	0.2	0.3
Full service meals and snacks ^{1, 2}	2.993	3.3	0.6	0.4	0.2	0.6
Limited service meals and snacks ^{1, 2}	2.566	3.0	0.0	0.3	0.2	0.0
Food at employee sites and schools ²	0.179	1.4	0.1	0.2	-0.2	0.9
Food at elementary and secondary schools ^{1, 3, 5}		1.6	0.1	0.0	0.0	0.1
Food from vending machines and mobile vendors ^{1, 2}	0.092	4.5	0.2	0.0	1.2	0.2
Other food away from home ^{1, 2}	0.195	2.0	0.7	0.0	-0.2	0.7
Energy.....	7.903	-3.4	-1.9	2.9	-0.6	-2.3
Energy commodities.....	4.595	-5.4	-4.8	5.4	-0.4	-3.5
Fuel oil and other fuels.....	0.184	-4.9	-3.8	0.7	0.3	-2.1
Fuel oil.....	0.113	-5.6	-4.3	1.3	-0.3	-2.3
Propane, kerosene, and firewood ⁶	0.071	-3.8	-3.0	-1.0	0.9	-1.7
Motor fuel.....	4.411	-5.4	-4.9	5.6	-0.5	-3.6
Gasoline (all types).....	4.321	-5.4	-4.9	5.7	-0.5	-3.6
Gasoline, unleaded regular ³		-5.7	-5.1	5.6	-0.6	-3.7
Gasoline, unleaded midgrade ^{3, 7}		-4.3	-4.2	5.9	-0.4	-3.3
Gasoline, unleaded premium ³		-3.3	-4.0	6.6	-0.2	-3.2
Other motor fuels ²	0.090	-4.9	-2.3	1.4	-0.5	-2.3
Energy services.....	3.308	-0.7	2.0	-0.1	-0.8	-0.7
Electricity.....	2.578	-0.3	2.6	0.0	-0.8	-0.8
Utility (piped) gas service.....	0.730	-2.1	-0.1	-0.8	-1.0	-0.3
All items less food and energy.....	78.860	2.1	0.2	0.1	0.1	0.3
Commodities less food and energy commodities.....	19.350	0.2	0.0	-0.3	-0.1	0.4
Household furnishings and supplies ⁸	3.338	1.6	0.2	-0.5	0.3	0.3
Window and floor coverings and other linens ^{1, 2}	0.250	-2.8	-1.2	-1.4	-0.6	-1.2
Floor coverings ^{1, 2}	0.056	3.5	1.2	0.0	0.4	1.2
Window coverings ^{1, 2}	0.042	-6.1	1.0	-1.9	-3.3	1.0
Other linens ^{1, 2}	0.152	-4.0	-2.7	-1.7	-0.2	-2.7
Furniture and bedding.....	0.888	3.1	0.8	-0.7	0.7	0.9
Bedroom furniture ¹	0.317	1.7	0.9	-0.4	0.1	0.9
Living room, kitchen, and dining room furniture ^{1, 2}	0.431	3.6	1.3	-0.6	1.2	1.3
Other furniture ^{1, 2}	0.129	4.9	-0.8	-0.9	-0.4	-0.8
Infants' furniture ^{1, 3, 5}		11.3	0.0			0.0
Appliances ²	0.214	2.6	0.2	0.5	-0.8	0.4
Major appliances ²	0.080	2.9	-1.4	1.0	-0.2	-0.2
Laundry equipment ³		-4.0	-0.7	2.3	0.6	-0.7
Other appliances ²	0.131	2.3	1.2	0.2	-1.5	1.0
Other household equipment and furnishings ²	0.494	0.0	-0.1	-1.0	1.4	0.6
Clocks, lamps, and decorator items ¹	0.271	-1.3	-2.0	-1.7	1.0	-2.0
Indoor plants and flowers ⁹	0.091	1.8	1.0	0.1	0.3	1.0
Dishes and flatware ^{1, 2}	0.054	6.3	6.1	2.4	5.0	6.1
Nonelectric cookware and tableware ²	0.078	-1.9	0.7	-2.8	-0.3	1.0

See footnotes at end of table.

Table 2. Consumer Price Index for All Urban Consumers (CPI-U): U.S. city average, by detailed expenditure category, June 2019 — Continued
 [1982-84=100, unless otherwise noted]

Expenditure category	Relative importance May 2019	Unadjusted percent change		Seasonally adjusted percent change		
		Jun. 2018- Jun. 2019	May 2019- Jun. 2019	Mar. 2019- Apr. 2019	Apr. 2019- May 2019	May 2019- Jun. 2019
Tools, hardware, outdoor equipment and supplies ² . . .	0.659	1.1	0.1	-0.5	-0.3	0.2
Tools, hardware and supplies ^{1, 2}	0.195	1.6	0.5	-0.6	0.4	0.5
Outdoor equipment and supplies ²	0.304	0.6	-0.3	-0.6	-0.9	0.0
Housekeeping supplies ¹	0.833	2.5	0.2	-0.1	-0.1	0.2
Household cleaning products ^{1, 2}	0.330	1.5	-0.1	0.1	-0.1	-0.1
Household paper products ^{1, 2}	0.224	5.6	0.5	-0.5	0.6	0.5
Miscellaneous household products ^{1, 2}	0.279	1.2	0.3	0.1	-0.7	0.3
Apparel	2.997	-1.3	-0.5	-0.8	0.0	1.1
Men's and boys' apparel	0.744	-0.1	-1.0	-2.1	-0.8	0.8
Men's apparel	0.578	-0.6	-1.1	-1.9	-0.7	0.5
Men's suits, sport coats, and outerwear	0.105	0.3	-3.1	-3.5	-1.4	-0.7
Men's underwear, nightwear, swimwear, and accessories	0.152	1.5	-1.2	-0.1	0.7	-1.1
Men's shirts and sweaters ²	0.162	-2.8	-0.8	-3.0	-0.3	1.7
Men's pants and shorts	0.151	-0.9	0.1	0.3	-1.5	1.5
Boys' apparel	0.166	1.7	-0.7	-4.2	0.1	0.9
Women's and girls' apparel	1.216	-3.6	-1.2	0.0	0.2	0.7
Women's apparel	1.043	-4.9	-2.0	0.0	0.2	-0.4
Women's outerwear	0.069	5.0	2.4	-1.8	-0.7	6.3
Women's dresses	0.125	-7.4	-4.8	-1.8	2.5	-1.1
Women's suits and separates ²	0.542	-7.9	-2.0	0.1	-0.7	0.2
Women's underwear, nightwear, swimwear, and accessories ²	0.295	0.0	-2.0	2.1	-1.8	-1.4
Girls' apparel	0.172	4.1	4.0	0.1	0.2	6.8
Footwear	0.657	0.0	0.1	-1.6	0.1	1.6
Men's footwear ¹	0.211	0.5	-0.4	-1.8	1.1	-0.4
Boys' and girls' footwear	0.156	1.6	-0.6	-1.5	-2.5	0.6
Women's footwear	0.289	-1.1	0.8	-0.4	-0.2	2.0
Infants' and toddlers' apparel	0.137	-2.6	-3.0	-0.3	0.5	-1.1
Jewelry and watches ⁶	0.244	4.1	3.8	1.5	0.3	4.1
Watches ^{1, 6}	0.098	4.8	1.3	2.4	-2.2	1.3
Jewelry ⁶	0.147	3.7	5.5	2.9	1.8	5.0
Transportation commodities less motor fuel ⁸	6.542	0.9	0.4	-0.4	-0.4	0.6
New vehicles	3.691	0.6	-0.2	0.1	0.1	0.1
New cars and trucks ^{2, 3}		0.6	-0.2	0.1	0.0	0.1
New cars ³		0.9	-0.1	0.1	0.2	0.2
New trucks ^{3, 10}		0.3	-0.3	0.0	-0.1	-0.1
Used cars and trucks	2.359	1.2	1.4	-1.3	-1.4	1.6
Motor vehicle parts and equipment ¹	0.379	1.9	0.1	-0.2	0.6	0.1
Tires ¹	0.224	2.0	0.1	-0.4	0.5	0.1
Vehicle accessories other than tires ^{1, 2}	0.155	1.7	0.0	0.1	0.8	0.0
Vehicle parts and equipment other than tires ^{1, 3}		2.4	-0.3	1.0	0.6	-0.3
Motor oil, coolant, and fluids ^{1, 3}		-1.7	0.7	-5.2	1.2	0.7
Medical care commodities	1.687	-1.5	-0.4	0.9	-0.4	-0.2
Medicinal drugs ⁸	1.630	-1.6	-0.5	0.6	-0.1	-0.3
Prescription drugs	1.294	-2.0	-0.7	0.7	-0.2	-0.6
Nonprescription drugs ^{1, 8}	0.336	-0.2	0.3	0.5	0.6	0.3
Medical equipment and supplies ^{1, 8}	0.058	3.5	0.6	2.0	1.6	0.6
Recreation commodities ⁸	1.768	-0.9	-0.1	-0.3	0.1	-0.1
Video and audio products ⁸	0.214	-9.6	-0.8	0.0	-1.0	-1.2
Televisions	0.088	-19.7	-1.2	-1.4	-1.5	-2.4
Other video equipment ²	0.027	-2.2	-2.0	-1.7	-1.4	-1.2
Audio equipment ¹	0.044	1.4	-0.8	4.2	-2.2	-0.8
Recorded music and music subscriptions ^{1, 2}	0.047	-2.7	0.5	-0.1	1.0	0.5

See footnotes at end of table.

Table 2. Consumer Price Index for All Urban Consumers (CPI-U): U.S. city average, by detailed expenditure category, June 2019 — Continued
 [1982-84=100, unless otherwise noted]

Expenditure category	Relative importance May 2019	Unadjusted percent change		Seasonally adjusted percent change		
		Jun. 2018- Jun. 2019	May 2019- Jun. 2019	Mar. 2019- Apr. 2019	Apr. 2019- May 2019	May 2019- Jun. 2019
Pets and pet products ¹	0.607	2.8	0.0	0.4	0.5	0.0
Pet food ^{1, 2, 3}		2.8	0.1	0.4	0.6	0.1
Purchase of pets, pet supplies, accessories ^{1, 2, 3}		2.7	-0.2	0.3	0.7	-0.2
Sporting goods.....	0.486	0.7	0.4	-0.9	0.1	0.3
Sports vehicles including bicycles ¹	0.278	1.9	1.0	-0.7	-2.3	1.0
Sports equipment.....	0.201	-1.1	-0.5	0.3	1.6	-0.3
Photographic equipment and supplies.....	0.032	2.7	0.2	1.3	0.0	1.1
Film and photographic supplies ^{1, 2, 3}						
Photographic equipment ^{2, 3}		2.5	0.3	0.9	-0.3	1.1
Recreational reading materials ¹	0.115	3.6	-0.3	1.1	0.9	-0.3
Newspapers and magazines ^{1, 2}	0.072	8.1	0.5	1.5	2.2	0.5
Recreational books ^{1, 2}	0.043	-3.1	-1.6	0.5	-1.2	-1.6
Other recreational goods ²	0.313	-5.6	-0.3	-1.6	0.0	-0.1
Toys.....	0.242	-7.6	-0.4	-1.7	-0.2	-0.1
Toys, games, hobbies and playground equipment ^{1, 3}		-4.7	0.0	-1.3	-0.9	0.2
Sewing machines, fabric and supplies ^{1, 2}	0.024	4.6	0.4	-2.6	-1.7	0.4
Music instruments and accessories ^{1, 2}	0.036	2.8	-0.3	-0.5	2.5	-0.3
Education and communication commodities ⁸	0.513	-6.1	-1.0	-1.1	-0.5	-0.8
Educational books and supplies.....	0.126	-2.1	0.5	0.1	-0.8	0.4
College textbooks ^{1, 3, 11}		-2.5	0.5	0.3	-0.7	0.5
Information technology commodities ⁸	0.386	-7.3	-1.5	-1.5	-0.4	-1.2
Computers, peripherals, and smart home assistant devices ⁴	0.297	-5.9	-1.9	-1.5	-0.4	-1.6
Computer software and accessories ^{1, 2}	0.022	-4.1	2.8	-4.2	0.4	2.8
Telephone hardware, calculators, and other consumer information items ^{1, 2}	0.067	-14.0	-0.8	-0.2	-1.0	-0.8
Alcoholic beverages.....	0.958	1.5	0.2	-0.2	0.4	0.3
Alcoholic beverages at home.....	0.597	1.7	0.1	-0.3	0.8	0.3
Beer, ale, and other malt beverages at home.....	0.265	1.7	0.1	-0.3	0.4	0.4
Distilled spirits at home.....	0.080	2.5	0.6	-0.7	0.1	0.9
Whiskey at home ^{1, 3}		1.1	0.6	-1.8	-0.6	0.6
Distilled spirits, excluding whiskey, at home ^{1, 3}		2.4	0.2	-0.4	-0.3	0.2
Wine at home.....	0.252	1.6	0.0	-0.3	1.5	0.1
Alcoholic beverages away from home ¹	0.361	1.1	0.2	0.2	-0.2	0.2
Beer, ale, and other malt beverages away from home ^{1, 2, 3}		0.8	0.2	-0.2	-0.7	0.2
Wine away from home ^{1, 2, 3}		2.1	0.3	0.2	0.2	0.3
Distilled spirits away from home ^{1, 2, 3}		0.2	0.1	1.0	0.1	0.1
Other goods ⁸	1.548	1.2	-0.4	0.1	0.3	-0.3
Tobacco and smoking products.....	0.664	4.6	0.1	-0.1	0.4	0.1
Cigarettes ²	0.589	4.7	0.1	-0.1	0.4	0.0
Tobacco products other than cigarettes ^{1, 2}	0.060	3.5	0.2	-0.6	0.6	0.2
Personal care products ¹	0.675	-0.6	-0.3	0.4	-0.2	-0.3
Hair, dental, shaving, and miscellaneous personal care products ^{1, 2}	0.377	0.8	-0.5	0.6	0.2	-0.5
Cosmetics, perfume, bath, nail preparations and implements ¹	0.292	-2.3	0.0	0.2	-0.7	0.0
Miscellaneous personal goods ²	0.209	-3.3	-2.0	-0.3	1.5	-1.7
Stationery, stationery supplies, gift wrap ³		-1.3	0.6	-0.7	-0.8	1.0
Infants' equipment ^{1, 3, 5}		-3.0	0.3	0.9	1.1	0.3
Services less energy services.....	59.511	2.8	0.3	0.3	0.2	0.3
Shelter.....	33.208	3.5	0.4	0.4	0.2	0.3
Rent of shelter ¹²	32.840	3.5	0.4	0.4	0.3	0.3

See footnotes at end of table.

Table 2. Consumer Price Index for All Urban Consumers (CPI-U): U.S. city average, by detailed expenditure category, June 2019 — Continued
 [1982-84=100, unless otherwise noted]

Expenditure category	Relative importance May 2019	Unadjusted percent change		Seasonally adjusted percent change		
		Jun. 2018- Jun. 2019	May 2019- Jun. 2019	Mar. 2019- Apr. 2019	Apr. 2019- May 2019	May 2019- Jun. 2019
Rent of primary residence.....	7.901	3.9	0.4	0.4	0.2	0.4
Lodging away from home ²	1.039	3.9	0.6	1.6	-0.1	-0.6
Housing at school, excluding board ¹²	0.112	2.6	0.1	0.2	0.3	0.2
Other lodging away from home including hotels and motels.....	0.926	4.1	0.7	1.8	-0.1	-0.7
Owners' equivalent rent of residences ¹²	23.900	3.4	0.3	0.3	0.3	0.3
Owners' equivalent rent of primary residence ¹² ..	22.568	3.4	0.3	0.3	0.3	0.3
Tenants' and household insurance ^{1, 2}	0.368	0.8	0.4	0.0	0.1	0.4
Water and sewer and trash collection services ²	1.088	3.3	0.2	0.3	0.2	0.3
Water and sewerage maintenance.....	0.821	3.3	0.3	0.4	0.2	0.4
Garbage and trash collection ^{1, 10}	0.266	3.4	0.0	0.2	0.3	0.0
Household operations ^{1, 2}	0.875	5.2	2.8	0.6	-0.6	2.8
Domestic services ^{1, 2}	0.295	0.8	0.1	0.0	-2.2	0.1
Gardening and lawncare services ^{1, 2}	0.289	8.0	6.1	-1.0	0.2	6.1
Moving, storage, freight expense ²	0.103	5.7	1.4	1.2	0.7	-0.6
Repair of household items ^{1, 2}	0.112	8.8	2.3	6.4	-0.1	2.3
Medical care services.....	6.961	2.8	0.3	0.2	0.5	0.4
Professional services.....	3.220	0.9	0.3	-0.1	0.3	0.4
Physicians' services.....	1.710	0.4	0.1	0.2	0.1	0.1
Dental services.....	0.783	1.9	0.9	-0.1	0.4	1.1
Eyeglasses and eye care ^{1, 6}	0.314	1.4	0.1	-0.1	0.5	0.1
Services by other medical professionals ^{1, 6}	0.412	0.5	0.1	-0.2	0.3	0.1
Hospital and related services.....	2.583	0.8	-0.2	-0.4	0.5	-0.1
Hospital services ¹³	2.302	0.5	-0.3	-0.5	0.5	-0.1
Inpatient hospital services ^{13, 3}	0.193	0.5	-0.1	-0.3	0.6	0.0
Outpatient hospital services ^{3, 6}	0.087	0.1	-0.3	-0.8	0.3	-0.2
Nursing homes and adult day services ¹³	0.193	3.5	0.2	0.2	0.1	0.3
Care of invalids and elderly at home ^{1, 5}	0.087	4.0	0.1	0.3	0.0	0.1
Health insurance ^{1, 5}	1.158	13.7	1.3	1.5	1.5	1.3
Transportation services.....	5.936	0.9	0.1	0.1	0.1	0.0
Leased cars and trucks ^{1, 11}	0.619	-3.8	-0.7	-0.1	-1.2	-0.7
Car and truck rental ²	0.109	2.1	7.9	0.3	2.0	4.0
Motor vehicle maintenance and repair ¹	1.125	3.5	0.4	0.4	-0.2	0.4
Motor vehicle body work ¹	0.056	3.9	0.8	1.0	0.1	0.8
Motor vehicle maintenance and servicing ¹	0.636	4.2	0.4	0.3	0.0	0.4
Motor vehicle repair ^{1, 2}	0.369	2.2	0.2	0.5	-0.7	0.2
Motor vehicle insurance.....	2.350	0.7	0.1	-0.2	-0.4	0.3
Motor vehicle fees ^{1, 2}	0.540	2.0	-0.1	0.2	0.2	-0.1
State motor vehicle registration and license fees ^{1, 2}	0.277	0.8	-0.1	0.2	0.0	-0.1
Parking and other fees ^{1, 2}	0.246	3.2	0.0	0.3	0.4	0.0
Parking fees and tolls ^{2, 3}	0.056	3.2	0.1	0.5	0.4	0.2
Automobile service clubs ^{1, 2, 3}	0.056	0.0	0.0	0.0	0.0	0.0
Public transportation.....	1.192	1.1	-0.5	0.3	1.9	-1.1
Airline fares.....	0.739	1.5	-0.1	-0.1	2.0	-0.9
Other intercity transportation.....	0.168	-0.3	-1.7	1.1	0.9	-2.2
Intercity bus fare ^{1, 3, 4}	0.056	0.0	0.2	2.9	2.1	0.2
Intercity train fare ^{1, 3, 4}	0.056	0.0	0.0	0.0	0.0	0.0
Ship fare ^{1, 2, 3}	0.056	-1.5	-2.9	1.3	-0.2	-2.9
Intracity transportation ¹	0.278	1.1	-1.0	-0.1	1.1	-1.0
Intracity mass transit ^{1, 3, 8}	0.056	1.7	0.0	0.0	1.2	0.0
Recreation services ⁸	3.844	1.7	-0.1	0.2	-0.5	-0.2
Video and audio services ⁸	1.579	1.5	-0.1	-0.2	-0.1	0.0
Cable and satellite television service ¹⁰	1.490	1.3	-0.2	-0.2	-0.1	-0.1

See footnotes at end of table.

Table 2. Consumer Price Index for All Urban Consumers (CPI-U): U.S. city average, by detailed expenditure category, June 2019 — Continued
 [1982-84=100, unless otherwise noted]

Expenditure category	Relative importance May 2019	Unadjusted percent change		Seasonally adjusted percent change		
		Jun. 2018- Jun. 2019	May 2019- Jun. 2019	Mar. 2019- Apr. 2019	Apr. 2019- May 2019	May 2019- Jun. 2019
Video discs and other media, including rental of video ^{1, 2}	0.089	5.2	1.5	-0.9	-1.0	1.5
Video discs and other media ^{1, 2, 3}		5.0	1.3	-2.1	-0.7	1.3
Rental of video discs and other media ^{1, 2, 3}		4.4	2.2	1.7	-1.2	2.2
Pet services including veterinary ²	0.417	3.5	0.3	0.1	0.3	0.2
Pet services ^{1, 2, 3}		1.3	0.4	0.2	0.0	0.4
Veterinarian services ^{2, 3}		4.2	0.2	0.1	0.4	0.3
Photographers and photo processing ^{1, 2}	0.037	-1.4	-0.9	-1.3	0.7	-0.9
Photographer fees ^{1, 2, 3}		-3.5	0.2	0.0	1.8	0.2
Photo processing ^{1, 2, 3}		-0.4	-1.8	-2.9	-0.9	-1.8
Other recreation services ²	1.809	1.5	-0.1	0.6	-1.1	-0.4
Club membership for shopping clubs, fraternal, or other organizations, or participant sports fees ^{1, 2}	0.664	1.6	-0.3	0.5	-2.1	-0.3
Admissions.....	0.655	0.4	-0.1	0.8	-0.3	-0.9
Admission to movies, theaters, and concerts ^{1, 2, 3}		0.9	-0.3	0.2	0.9	-0.3
Admission to sporting events ^{1, 2, 3}		-0.8	-0.2	2.7	-3.1	-0.2
Fees for lessons or instructions ^{1, 6}	0.218	3.5	0.2	0.1	-0.1	0.2
Education and communication services ⁸	5.969	1.2	0.2	0.2	0.2	0.2
Tuition, other school fees, and childcare.....	2.882	3.3	0.1	0.2	0.3	0.1
College tuition and fees.....	1.596	3.4	0.0	0.2	0.2	-0.1
Elementary and high school tuition and fees.....	0.332	4.1	0.3	0.3	0.0	0.3
Child care and nursery school ⁹	0.803	2.8	0.4	0.1	0.6	0.4
Technical and business school tuition and fees ²	0.032	1.8	0.4	0.7	0.5	0.5
Postage and delivery services ²	0.112	5.5	0.0	0.4	0.2	0.2
Postage.....	0.098	5.9	0.0	0.3	0.3	0.2
Delivery services ²	0.014	3.1	0.1	0.6	-0.1	0.4
Telephone services ^{1, 2}	2.196	-1.7	0.2	0.2	0.1	0.2
Wireless telephone services ^{1, 2}	1.625	-3.0	0.1	0.2	-0.1	0.1
Land-line telephone services ^{1, 8}	0.570	2.2	0.4	0.1	0.5	0.4
Internet services and electronic information providers ²	0.771	1.2	0.5	0.1	0.2	0.3
Other personal services ^{1, 8}	1.630	1.7	0.1	-0.2	0.3	0.1
Personal care services ¹	0.624	1.8	0.2	-0.1	0.0	0.2
Haircuts and other personal care services ^{1, 2}	0.624	1.8	0.2	-0.1	0.0	0.2
Miscellaneous personal services.....	1.006	1.7	0.1	-0.4	0.5	0.0
Legal services ^{1, 6}	0.301	0.5	0.1	-1.2	0.0	0.1
Funeral expenses ^{1, 6}	0.127	2.0	0.0	0.2	0.4	0.0
Laundry and dry cleaning services ^{1, 2}	0.241	4.0	0.4	0.3	0.3	0.4
Apparel services other than laundry and dry cleaning ^{1, 2}	0.029	4.9	1.0	-0.8	-0.1	1.0
Financial services ⁶	0.237	0.3	-0.4	-0.3	1.3	-0.6
Checking account and other bank services ^{1, 2, 3}		0.2	0.0	0.0	0.0	0.0
Tax return preparation and other accounting fees ^{2, 3}		0.0	-0.5	-0.6	3.6	-0.9

¹ Not seasonally adjusted.

² Indexes on a December 1997=100 base.

³ Special index based on a substantially smaller sample.

⁴ Indexes on a December 2007=100 base.

⁵ Indexes on a December 2005=100 base.

⁶ Indexes on a December 1986=100 base.

⁷ Indexes on a December 1993=100 base.

⁸ Indexes on a December 2009=100 base.

⁹ Indexes on a December 1990=100 base.

¹⁰ Indexes on a December 1983=100 base.

¹¹ Indexes on a December 2001=100 base.

¹² Indexes on a December 1982=100 base.

¹³ Indexes on a December 1996=100 base.

Table 3. Consumer Price Index for All Urban Consumers (CPI-U): U.S. city average, special aggregate indexes, June 2019

[1982-84=100, unless otherwise noted]

Special aggregate indexes	Relative importance May 2019	Unadjusted indexes			Unadjusted percent change		Seasonally adjusted percent change		
		Jun. 2018	May 2019	Jun. 2019	Jun. 2018- Jun. 2019	May 2019- Jun. 2019	Mar. 2019- Apr. 2019	Apr. 2019- May 2019	May 2019- Jun. 2019
All items less food.....	86.763	251.775	255.759	255.825	1.6	0.0	0.4	0.0	0.1
All items less shelter.....	66.792	233.054	235.131	234.791	0.7	-0.1	0.3	0.0	-0.1
All items less food and shelter.....	53.555	227.608	229.061	228.659	0.5	-0.2	0.4	-0.1	-0.1
All items less food, shelter, and energy.....	45.652	229.953	232.280	232.585	1.1	0.1	0.0	0.0	0.3
All items less food, shelter, energy, and used cars and trucks.....	43.293	235.517	238.051	238.200	1.1	0.1	0.0	0.1	0.2
All items less medical care.....	91.352	240.756	244.629	244.653	1.6	0.0	0.3	0.1	0.0
All items less energy.....	92.097	256.325	261.203	261.696	2.1	0.2	0.1	0.1	0.3
Commodities.....	37.181	185.965	187.236	186.112	0.1	-0.6	0.4	0.0	-0.2
Commodities less food, energy, and used cars and trucks.....	16.990	145.458	145.740	145.462	0.0	-0.2	-0.2	0.1	0.2
Commodities less food.....	23.945	155.493	155.507	154.073	-0.9	-0.9	0.7	-0.2	-0.3
Commodities less food and beverages.....	22.987	152.228	152.161	150.688	-1.0	-1.0	0.7	-0.2	-0.4
Services.....	62.819	317.004	323.964	325.218	2.6	0.4	0.3	0.1	0.2
Services less rent of shelter ¹	29.979	337.420	341.281	342.741	1.6	0.4	0.1	0.0	0.1
Services less medical care services.....	55.858	301.716	308.204	309.446	2.6	0.4	0.3	0.0	0.2
Durables.....	9.828	104.636	104.849	105.167	0.5	0.3	-0.3	-0.2	0.5
Nondurables.....	27.353	227.922	229.875	227.749	-0.1	-0.9	0.7	0.2	-0.6
Nondurables less food.....	14.117	205.762	205.504	201.854	-1.9	-1.8	1.5	-0.1	-1.3
Nondurables less food and beverages.....	13.159	203.036	202.572	198.687	-2.1	-1.9	1.7	-0.1	-1.4
Nondurables less food, beverages, and apparel.....	10.162	255.799	255.619	249.683	-2.4	-2.3	2.4	-0.1	-2.2
Nondurables less food and apparel.....	11.120	253.990	254.108	248.754	-2.1	-2.1	2.1	-0.1	-2.0
Housing.....	42.000	258.710	265.137	266.461	3.0	0.5	0.3	0.1	0.3
Education and communication ²	6.482	136.535	137.199	137.344	0.6	0.1	0.1	0.1	0.1
Education ²	3.008	256.679	264.199	264.612	3.1	0.2	0.2	0.2	0.1
Communication ²	3.474	74.129	72.989	73.034	-1.5	0.1	0.0	0.1	0.1
Information and information processing ²	3.362	70.228	68.994	69.038	-1.7	0.1	0.0	0.0	0.1
Information technology, hardware and services ³	1.166	7.489	7.371	7.358	-1.7	-0.2	-0.4	0.0	-0.2
Recreation ²	5.612	119.145	120.254	120.145	0.8	-0.1	0.0	-0.3	-0.2
Video and audio ²	1.793	104.115	104.381	104.162	0.0	-0.2	-0.2	-0.2	-0.2
Pets, pet products and services ²	1.024	172.696	177.868	178.059	3.1	0.1	0.3	0.4	0.1
Photography ²	0.071	72.656	73.309	73.024	0.5	-0.4	-0.1	0.4	0.0
Food and beverages.....	14.195	253.022	257.791	257.778	1.9	0.0	-0.1	0.3	0.1
Domestically produced farm food.....	6.016	247.343	249.781	249.146	0.7	-0.3	-0.4	0.2	-0.1
Other services.....	11.443	352.454	357.190	357.493	1.4	0.1	0.1	0.0	0.0
Apparel less footwear.....	2.340	118.533	117.389	116.544	-1.7	-0.7	-0.5	-0.1	1.0
Fuels and utilities.....	4.579	244.560	241.390	244.703	0.1	1.4	0.0	-0.5	-0.5
Household energy.....	3.492	204.238	198.961	202.402	-0.9	1.7	-0.1	-0.8	-0.8
Medical care.....	8.648	486.019	494.928	495.563	2.0	0.1	0.3	0.3	0.3
Transportation.....	16.889	214.679	215.391	213.073	-0.7	-1.1	1.2	-0.3	-0.7
Private transportation.....	15.697	210.184	210.674	208.319	-0.9	-1.1	1.3	-0.4	-0.7
New and used motor vehicles ²	6.891	99.447	99.416	99.874	0.4	0.5	-0.4	-0.5	0.6
Utilities and public transportation.....	9.274	219.554	218.195	219.709	0.1	0.7	-0.1	-0.2	-0.4
Household furnishings and operations.....	4.213	121.408	123.344	124.237	2.3	0.7	-0.3	0.1	0.8
Other goods and services.....	3.178	442.851	449.896	449.345	1.5	-0.1	0.0	0.3	-0.1
Personal care.....	2.514	231.603	233.542	233.136	0.7	-0.2	0.0	0.3	-0.2

¹ Indexes on a December 1982=100 base.

² Indexes on a December 1997=100 base.

³ Indexes on a December 1988=100 base.

Table 4. Consumer Price Index for All Urban Consumers (CPI-U): Selected areas, all items index, June 2019
 [1982-84=100, unless otherwise noted]

Area	Pricing Schedule ¹	Percent change to Jun. 2019 from:			Percent change to May 2019 from:		
		Jun. 2018	Apr. 2019	May 2019	May 2018	Mar. 2019	Apr. 2019
U.S. city average.....	M	1.6	0.2	0.0	1.8	0.7	0.2
Region and area size²							
Northeast.....	M	1.6	0.4	0.1	1.5	0.6	0.3
Northeast - Size Class A.....	M	1.8	0.4	0.2	1.7	0.5	0.2
Northeast - Size Class B/C ³	M	1.2	0.4	0.1	1.2	0.8	0.4
New England ⁴	M	1.9	0.2	-0.1	1.9	0.7	0.3
Middle Atlantic ⁴	M	1.4	0.5	0.2	1.3	0.6	0.2
Midwest.....	M	1.2	0.3	0.0	1.3	0.6	0.3
Midwest - Size Class A.....	M	1.0	0.6	0.0	1.3	0.6	0.6
Midwest - Size Class B/C ³	M	1.3	0.2	0.0	1.4	0.6	0.1
East North Central ⁴	M	1.2	0.2	-0.1	1.3	0.6	0.3
West North Central ⁴	M	1.3	0.5	0.2	1.4	0.7	0.3
South.....	M	1.1	-0.1	-0.1	1.4	0.5	-0.1
South - Size Class A.....	M	1.2	-0.1	-0.3	1.9	0.8	0.2
South - Size Class B/C ³	M	1.1	-0.1	0.1	1.1	0.3	-0.2
South Atlantic ⁴	M	1.6	-0.2	-0.2	1.9	0.5	-0.1
East South Central ⁴	M	0.3	-0.1	0.0	0.3	0.1	-0.1
West South Central ⁴	M	0.7	0.0	0.1	1.0	0.6	0.0
West.....	M	2.7	0.5	0.0	2.9	1.3	0.5
West - Size Class A.....	M	2.8	0.4	0.0	3.0	1.2	0.4
West - Size Class B/C ³	M	2.6	0.7	0.0	2.8	1.5	0.6
Mountain ⁴	M	2.5	1.0	0.1	2.5	1.7	0.9
Pacific ⁴	M	2.8	0.4	0.0	3.1	1.2	0.4
Size classes							
Size Class A ⁵	M	1.8	0.3	0.0	2.1	0.8	0.3
Size Class B/C ³	M	1.5	0.2	0.0	1.6	0.7	0.1
Selected local areas							
Chicago-Naperville-Elgin, IL-IN-WI.....	M	1.0	0.5	-0.4	1.2	0.7	0.8
Los Angeles-Long Beach-Anaheim, CA.....	M	3.3	0.2	0.0	3.1	1.2	0.2
New York-Newark-Jersey City, NY-NJ-PA.....	M	1.7	0.5	0.3	1.5	0.5	0.2
Atlanta-Sandy Springs-Roswell, GA.....	2	1.1	-0.1				
Baltimore-Columbia-Towson, MD ⁶	2	1.0	-0.8				
Detroit-Warren-Dearborn, MI.....	2	0.1	0.4				
Houston-The Woodlands-Sugar Land, TX.....	2	0.8	0.0				
Miami-Fort Lauderdale-West Palm Beach, FL.....	2	1.2	-0.5				
Philadelphia-Camden-Wilmington, PA-NJ-DE-MD.....	2	2.1	0.5				
Phoenix-Mesa-Scottsdale, AZ ⁷	2	2.2	1.0				
San Francisco-Oakland-Hayward, CA.....	2	3.2	0.2				
Seattle-Tacoma-Bellevue, WA.....	2	2.3	0.7				
St. Louis, MO-IL.....	2	1.0	0.9				
Urban Alaska.....	2	2.5	2.5				
Boston-Cambridge-Newton, MA-NH.....	1				2.3	0.2	
Dallas-Fort Worth-Arlington, TX.....	1				1.5	0.4	
Denver-Aurora-Lakewood, CO.....	1				1.6	0.7	
Minneapolis-St.Paul-Bloomington, MN-WI.....	1				2.3	1.0	
Riverside-San Bernardino-Ontario, CA ⁴	1				2.9	1.2	
San Diego-Carlsbad, CA.....	1				3.8	1.0	
Tampa-St. Petersburg-Clearwater, FL ⁸	1				2.2	0.9	
Urban Hawaii.....	1				2.1	0.7	
Washington-Arlington-Alexandria, DC-VA-MD-WV ⁶	1				1.6	0.6	

¹ Foods, fuels, and several other items are priced every month in all areas. Most other goods and services are priced as indicated: M - Every month. 1 - January, March, May, July, September, and November. 2 - February, April, June, August, October, and December.

² Regions defined as the four Census regions.

³ Indexes on a December 1996=100 base.

⁴ Indexes on a December 2017=100 base.

⁵ Indexes on a December 1986=100 base.

⁶ 1998 - 2017 indexes based on substantially smaller sample.

⁷ Indexes on a December 2001=100 base.

⁸ Indexes on a 1987=100 base.

NOTE: Local area indexes are byproducts of the national CPI program. Each local index has a smaller sample size than the national index and is, therefore, subject to substantially more sampling and other measurement error. As a result, local area indexes show greater volatility than the national index, although their long-term trends are similar. Therefore, the Bureau of Labor Statistics strongly urges users to consider adopting the national average CPI for use in their escalator clauses.

Table 5. Chained Consumer Price Index for All Urban Consumers (C-CPI-U) and the Consumer Price Index for All Urban Consumers (CPI-U): U.S. city average, all items index, June 2019
 [Percent changes]

Month Year	Unadjusted 1-month percent change		Unadjusted 12-month percent change	
	C-CPI-U ¹	CPI-U	C-CPI-U ¹	CPI-U
December 2000.....			2.6	3.4
December 2001.....			1.3	1.6
December 2002.....			2.0	2.4
December 2003.....			1.7	1.9
December 2004.....			3.2	3.3
December 2005.....			2.9	3.4
December 2006.....			2.3	2.5
December 2007.....			3.7	4.1
December 2008.....			0.2	0.1
December 2009.....			2.5	2.7
December 2010.....			1.3	1.5
December 2011.....			2.9	3.0
December 2012.....			1.5	1.7
December 2013.....			1.3	1.5
December 2014.....			0.5	0.8
December 2015.....			0.4	0.7
December 2016.....			1.8	2.1
January 2017.....	0.6	0.6	2.3	2.5
February 2017.....	0.3	0.3	2.6	2.7
March 2017.....	0.0	0.1	2.1	2.4
April 2017.....	0.3	0.3	1.8	2.2
May 2017.....	0.1	0.1	1.5	1.9
June 2017.....	0.0	0.1	1.2	1.6
July 2017.....	-0.2	-0.1	1.3	1.7
August 2017.....	0.3	0.3	1.5	1.9
September 2017.....	0.5	0.5	1.9	2.2
October 2017.....	-0.1	-0.1	1.6	2.0
November 2017.....	0.0	0.0	1.8	2.2
December 2017.....	-0.1	-0.1	1.7	2.1
January 2018.....	0.5	0.5	1.6	2.1
February 2018.....	0.4	0.5	1.7	2.2
March 2018.....	0.2	0.2	1.9	2.4
April 2018.....	0.4	0.4	2.1	2.5
May 2018.....	0.3	0.4	2.3	2.8
June 2018.....	0.1	0.2	2.4	2.9
July 2018.....	0.0	0.0	2.6	2.9
August 2018.....	0.0	0.1	2.3	2.7
September 2018.....	0.1	0.1	1.9	2.3
October 2018.....	0.2	0.2	2.1	2.5
November 2018.....	-0.3	-0.3	1.9	2.2
December 2018.....	-0.3	-0.3	1.6	1.9
January 2019.....	0.2	0.2	1.3	1.6
February 2019.....	0.4	0.4	1.4	1.5
March 2019.....	0.6	0.6	1.7	1.9
April 2019.....	0.5	0.5	1.8	2.0
May 2019.....	0.2	0.2	1.7	1.8
June 2019.....	0.0	0.0	1.5	1.6

¹ The C-CPI-U is designed to be a closer approximation to a cost-of-living index in that it, in its final form, accounts for any substitution that consumers make across item categories in response to changes in relative prices. Since the expenditure data required for the calculation of the C-CPI-U are available only with a time lag, the C-CPI-U is issued first in preliminary form using the latest available expenditure data at that time and is subject to four revisions.

Indexes are issued as initial estimates. Indexes are revised each quarter with the publication of January, April, July, and October data as updated expenditure estimates become available. The C-CPI-U indexes are updated quarterly until they become final. January-March indexes are final in January of the following year; April-June indexes are final in April of the following year; July-September indexes are final in July of the following year; October-December indexes are final in October of the following year.

Table 6. Consumer Price Index for All Urban Consumers (CPI-U): U.S. city average, by expenditure category, June 2019, 1-month analysis table
 [1982-84=100, unless otherwise noted]

Expenditure category	Relative importance May 2019	One Month				
		Seasonally adjusted percent change May 2019-Jun. 2019	Seasonally adjusted effect on All Items May 2019-Jun. 2019 ¹	Standard error, median price change ²	Largest (L) or Smallest (S) seasonally adjusted change since: ³	
					Date	Percent change
All items.....	100.000	0.1		0.04	-	-
Food.....	13.237	0.0	0.005	0.08	S-Apr.2019	-0.1
Food at home.....	7.212	-0.2	-0.014	0.12	S-Apr.2019	-0.5
Cereals and bakery products.....	0.955	-0.6	-0.005	0.29	S-Mar.2016	-0.7
Cereals and cereal products.....	0.306	0.6	0.002	0.57	L-Mar.2019	1.7
Flour and prepared flour mixes.....	0.040	0.6	0.000	0.83	L-Mar.2019	1.7
Breakfast cereal ⁴	0.148	0.5	0.001	0.69	L-Mar.2019	1.2
Rice, pasta, cornmeal ⁴	0.117	1.3	0.002	0.92	L-Mar.2019	2.2
Rice ^{4, 5, 6}		1.3		0.91	L-Apr.2019	1.3
Bakery products ⁴	0.650	-0.8	-0.005	0.33	S-Aug.1999	-0.8
Bread ^{4, 5}	0.192	-1.0	-0.002	0.58	S-Apr.2018	-1.3
White bread ^{4, 6}		-0.9		0.83	S-Apr.2018	-1.7
Bread other than white ^{4, 6}		-1.3		0.82	S-Jul.2017	-1.9
Fresh biscuits, rolls, muffins ⁵	0.091	-1.5	-0.001	0.68	S-Feb.2017	-1.5
Cakes, cupcakes, and cookies.....	0.162	-0.4	-0.001	0.57	S-Mar.2019	-0.9
Cookies ⁶		-0.7		0.88	S-Mar.2019	-1.7
Fresh cakes and cupcakes ^{4, 6}		0.4		0.58	L-Mar.2019	1.1
Other bakery products.....	0.205	-1.0	-0.002	0.57	S-Apr.2017	-1.4
Fresh sweetrolls, coffeecakes, doughnuts ^{4, 6}		-1.3		0.92	S-Apr.2017	-2.0
Crackers, bread, and cracker products ⁶		-0.7		1.03	S-Apr.2019	-0.7
Frozen and refrigerated bakery products, pies, tarts, turnovers ⁶		-0.6		0.70	S-Jan.2019	-0.6
Meats, poultry, fish, and eggs.....	1.586	-0.7	-0.012	0.24	S-Sep.2018	-0.7
Meats, poultry, and fish.....	1.504	-0.7	-0.010	0.25	S-Apr.2017	-0.7
Meats.....	0.943	-0.9	-0.008	0.31	S-Jul.2016	-0.9
Beef and veal.....	0.430	-1.3	-0.006	0.42	S-Jul.2016	-1.4
Uncooked ground beef ⁴	0.169	-1.3	-0.002	0.62	S-May 2018	-2.1
Uncooked beef roasts ^{4, 5}	0.063	2.5	0.002	1.15	S-Apr.2019	-0.4
Uncooked beef steaks ⁵	0.161	-1.8	-0.003	0.74	S-Sep.2017	-1.8
Uncooked other beef and veal ^{4, 5}	0.037	0.5	0.000	0.71	L-Apr.2019	1.1
Pork.....	0.296	-0.9	-0.003	0.62	S-Jun.2018	-0.9
Bacon, breakfast sausage, and related products ⁵	0.132	1.8	0.002	0.77	S-Apr.2019	-0.6
Bacon and related products ⁶		2.4		0.99	S-Apr.2019	-1.1
Breakfast sausage and related products ^{5, 6}		0.4		1.02	S-Apr.2019	-1.4
Ham.....	0.054	-4.0	-0.002	1.52	S-May 1983	-4.6
Ham, excluding canned ⁶		-4.8		1.59	S-EVER	-
Pork chops ⁴	0.044	-4.1	-0.002	1.62	S-Mar.2010	-4.5
Other pork including roasts, steaks, and ribs ⁵	0.066	-1.1	-0.001	1.30	S-Apr.2019	-1.2
Other meats.....	0.217	0.0	0.000	0.66	S-Mar.2019	-0.7
Frankfurters ⁶		1.5		1.35	L-Apr.2018	3.0
Lunchmeats ^{5, 6}		0.9		0.64	L-Feb.2019	1.2
Lamb and organ meats ^{4, 6}						
Lamb and mutton ^{4, 5, 6}						
Poultry ⁴	0.310	0.2	0.001	0.54	L-Apr.2019	0.8
Chicken ^{4, 5}	0.255	-0.1	0.000	0.60	L-Apr.2019	0.9
Fresh whole chicken ^{4, 6}		2.0		1.31	L-Sep.2016	2.9
Fresh and frozen chicken parts ^{4, 6}		-1.0		0.69	S-Sep.2018	-1.1
Other uncooked poultry including turkey ⁵	0.055	1.1	0.001	1.16	L-Feb.2019	3.1
Fish and seafood.....	0.251	-0.9	-0.002	0.47	S-Apr.2019	-1.4
Fresh fish and seafood ⁵	0.129	-1.1	-0.001	0.71	S-Apr.2019	-1.8
Processed fish and seafood ⁵	0.122	-0.7	-0.001	0.63	S-Apr.2019	-1.0

See footnotes at end of table.

Table 6. Consumer Price Index for All Urban Consumers (CPI-U): U.S. city average, by expenditure category, June 2019, 1-month analysis table — Continued
 [1982-84=100, unless otherwise noted]

Expenditure category	Relative importance May 2019	One Month				
		Seasonally adjusted percent change May 2019-Jun. 2019	Seasonally adjusted effect on All Items May 2019-Jun. 2019 ¹	Standard error, median price change ²	Largest (L) or Smallest (S) seasonally adjusted change since: ³	
					Date	Percent change
Shelf stable fish and seafood ^{4, 6}		-0.5		1.04	S-Mar.2019	-1.7
Frozen fish and seafood ⁶		-0.7		0.82	S-Apr.2019	-1.6
Eggs.....	0.083	-2.0	-0.002	1.07	L-Mar.2019	0.5
Dairy and related products.....	0.719	0.3	0.002	0.27	S-Apr.2019	0.1
Milk ⁵	0.199	0.5	0.001	0.48	L-Apr.2019	0.9
Fresh whole milk ⁶		1.4		0.62	L-Mar.2014	2.4
Fresh milk other than whole ^{5, 6}		0.1		0.56	S-Feb.2019	-0.5
Cheese and related products ⁴	0.231	0.6	0.001	0.58	S-Apr.2019	0.0
Ice cream and related products.....	0.102	-2.2	-0.002	0.98	S-Jun.2009	-2.9
Other dairy and related products ^{4, 5}	0.187	-0.1	0.000	0.57	S-Apr.2019	-0.5
Fruits and vegetables.....	1.278	-0.5	-0.006	0.33	L-Mar.2019	1.6
Fresh fruits and vegetables.....	1.009	-0.7	-0.007	0.38	L-Apr.2019	-0.7
Fresh fruits.....	0.534	0.0	0.000	0.50	L-Mar.2019	1.2
Apples.....	0.077	-2.0	-0.002	1.17	S-Jun.2018	-3.1
Bananas ⁴	0.078	0.5	0.000	0.77	S-Apr.2019	-1.9
Citrus fruits ⁵	0.150	-1.8	-0.003	0.90	L-Mar.2019	1.3
Oranges, including tangerines ⁶		-3.0		1.20	S-Apr.2019	-4.4
Other fresh fruits ⁵	0.229	2.6	0.006	0.97	L-Jun.2018	4.5
Fresh vegetables.....	0.474	-1.4	-0.007	0.53	S-Jan.2019	-1.7
Potatoes.....	0.080	-3.0	-0.002	1.53	S-Oct.2013	-3.3
Lettuce.....	0.061	-0.9	-0.001	1.78	L-Mar.2019	6.4
Tomatoes ⁴	0.073	1.4	0.001	1.43	L-Dec.2018	5.5
Other fresh vegetables.....	0.260	-0.8	-0.002	0.68	S-Jun.2017	-0.8
Processed fruits and vegetables ⁵	0.270	0.3	0.001	0.59	L-Mar.2019	1.6
Canned fruits and vegetables ⁵	0.152	-0.2	0.000	0.82	S-Apr.2019	-2.2
Canned fruits ^{5, 6}		0.0		0.95	L-Mar.2019	3.0
Canned vegetables ^{5, 6}		0.1		1.10	S-Apr.2019	-1.1
Frozen fruits and vegetables ⁵	0.076	1.3	0.001	0.99	L-Oct.2016	1.4
Frozen vegetables ⁶		2.1		1.23	L-Feb.2019	2.1
Other processed fruits and vegetables including dried ⁵	0.043	0.1	0.000	0.76	S-Apr.2019	-1.4
Dried beans, peas, and lentils ^{4, 5, 6}		0.5		1.42	L-Apr.2019	1.0
Nonalcoholic beverages and beverage materials.....	0.867	-0.6	-0.005	0.45	S-Apr.2019	-0.9
Juices and nonalcoholic drinks ⁵	0.617	-1.0	-0.006	0.58	S-Apr.2019	-1.0
Carbonated drinks.....	0.261	-2.0	-0.005	1.22	S-Dec.2010	-2.3
Frozen noncarbonated juices and drinks ^{4, 5}	0.008	-1.1	0.000	0.45	S-Sep.2018	-1.4
Nonfrozen noncarbonated juices and drinks ⁵	0.348	-0.1	0.000	0.55	S-Apr.2019	-1.3
Beverage materials including coffee and tea ⁵	0.249	1.0	0.002	0.63	L-Dec.2017	1.3
Coffee.....	0.159	1.8	0.003	0.76	L-Dec.2017	1.8
Roasted coffee ⁶		2.2		0.84	L-Apr.2011	3.7
Instant coffee ^{4, 6}		0.9		1.22	L-Apr.2019	1.1
Other beverage materials including tea ^{4, 5}	0.090	-1.3	-0.001	0.94	S-Aug.2017	-1.4
Other food at home.....	1.807	0.7	0.012	0.23	L-Jan.2012	0.8
Sugar and sweets ⁴	0.275	1.3	0.003	0.65	L-Jan.2019	1.3
Sugar and sugar substitutes.....	0.042	-0.6	0.000	0.79	S-Dec.2018	-1.0
Candy and chewing gum ^{4, 5}	0.181	1.9	0.003	0.89	L-Sep.2014	2.1
Other sweets ⁵	0.052	0.4	0.000	1.08	L-Mar.2019	2.0
Fats and oils.....	0.211	-0.5	-0.001	0.52	S-Apr.2019	-2.2
Butter and margarine ⁵	0.060	0.1	0.000	0.95	S-Apr.2019	-2.9
Butter ⁶		-1.3		1.09	S-Apr.2019	-3.9
Margarine ⁶		0.8		0.82	L-Mar.2019	1.8
Salad dressing ⁵	0.051	0.8	0.000	1.10	S-Apr.2019	-1.7
Other fats and oils including peanut butter ⁵	0.100	-1.4	-0.001	0.72	S-Apr.2019	-1.9

See footnotes at end of table.

Table 6. Consumer Price Index for All Urban Consumers (CPI-U): U.S. city average, by expenditure category, June 2019, 1-month analysis table — Continued

[1982-84=100, unless otherwise noted]

Expenditure category	Relative importance May 2019	One Month				
		Seasonally adjusted percent change May 2019-Jun. 2019	Seasonally adjusted effect on All Items May 2019-Jun. 2019 ¹	Standard error, median price change ²	Largest (L) or Smallest (S) seasonally adjusted change since: ³	
					Date	Percent change
Peanut butter ^{4, 5, 6}		3.2		1.06	L-Oct.2018	3.4
Other foods.....	1.321	0.7	0.010	0.29	L-Jul.2014	0.7
Soups.....	0.083	0.0	0.000	0.97	S-Apr.2019	-0.1
Frozen and freeze dried prepared foods ⁴	0.230	0.4	0.001	0.57	L-Apr.2019	1.6
Snacks ⁴	0.304	0.7	0.002	0.71	L-Feb.2019	1.1
Spices, seasonings, condiments, sauces.....	0.266	0.8	0.002	0.61	L-Jul.2016	0.8
Salt and other seasonings and spices ^{5, 6}		1.3		0.92	L-Jun.2018	1.6
Olives, pickles, relishes ^{4, 5, 6}		0.1		0.76	L-Aug.2018	1.0
Sauces and gravies ^{5, 6}		0.5		0.83	—	—
Other condiments ⁶		1.8		0.93	L-Sep.2018	3.8
Baby food ^{4, 5}	0.050	1.0	0.001	0.83	L-Apr.2019	1.3
Other miscellaneous foods ^{4, 5}	0.388	0.7	0.003	0.47	L-Apr.2019	0.9
Prepared salads ^{4, 7, 6}		0.7		0.84	L-Oct.2018	0.8
Food away from home ⁴	6.024	0.3	0.020	0.06	L-Apr.2019	0.3
Full service meals and snacks ^{4, 5}	2.993	0.6	0.017	0.08	L-EVER	—
Limited service meals and snacks ^{4, 5}	2.566	0.0	0.001	0.09	S-Oct.2018	-0.1
Food at employee sites and schools ⁵	0.179	0.9	0.002	0.22	L-Jun.2018	0.9
Food at elementary and secondary schools ^{4, 8, 6}		0.1		0.15	L-Jan.2019	0.1
Food from vending machines and mobile vendors ^{4, 5}	0.092	0.2	0.000	0.16	S-Apr.2019	0.0
Other food away from home ^{4, 5}	0.195	0.7	0.001	0.13	L-Apr.2018	2.3
Energy.....	7.903	-2.3	-0.179	0.19	S-Jan.2019	-3.1
Energy commodities.....	4.595	-3.5	-0.155	0.20	S-Jan.2019	-5.3
Fuel oil and other fuels.....	0.184	-2.1	-0.004	0.55	S-Dec.2018	-6.2
Fuel oil.....	0.113	-2.3	-0.003	0.86	S-Dec.2018	-9.4
Propane, kerosene, and firewood ⁹	0.071	-1.7	-0.001	0.63	S-Jan.2019	-1.9
Motor fuel.....	4.411	-3.6	-0.151	0.20	S-Jan.2019	-5.5
Gasoline (all types).....	4.321	-3.6	-0.150	0.20	S-Jan.2019	-5.5
Gasoline, unleaded regular ⁶		-3.7		0.44	S-Jan.2019	-5.6
Gasoline, unleaded midgrade ^{10, 6}		-3.3		0.43	S-Jan.2019	-4.6
Gasoline, unleaded premium ⁶		-3.2		0.40	S-Jan.2019	-5.3
Other motor fuels ⁵	0.090	-2.3	-0.002	0.21	S-Jan.2019	-3.8
Energy services.....	3.308	-0.7	-0.023	0.34	L-Apr.2019	-0.1
Electricity.....	2.578	-0.8	-0.021	0.37	—	—
Utility (piped) gas service.....	0.730	-0.3	-0.002	0.51	L-Mar.2019	-0.1
All items less food and energy.....	78.860	0.3	0.232	0.04	L-Jan.2018	0.3
Commodities less food and energy commodities.....	19.350	0.4	0.074	0.09	L-Jan.2019	0.4
Household furnishings and supplies ¹¹	3.338	0.3	0.009	0.20	—	—
Window and floor coverings and other linens ^{4, 5}	0.250	-1.2	-0.003	0.93	S-Apr.2019	-1.4
Floor coverings ^{4, 5}	0.056	1.2	0.001	0.77	L-Mar.2019	1.8
Window coverings ^{4, 5}	0.042	1.0	0.000	1.73	L-Feb.2019	1.2
Other linens ^{4, 5}	0.152	-2.7	-0.004	1.42	S-Feb.2019	-3.2
Furniture and bedding.....	0.888	0.9	0.008	0.42	L-Feb.2019	1.2
Bedroom furniture ⁴	0.317	0.9	0.003	0.68	L-Jan.2019	1.1
Living room, kitchen, and dining room furniture ^{4, 5}	0.431	1.3	0.006	0.65	L-Apr.2018	2.1
Other furniture ^{4, 5}	0.129	-0.8	-0.001	0.74	S-Apr.2019	-0.9
Infants' furniture ^{4, 8, 6}		0.0		0.71	L-Nov.2018	0.9
Appliances ⁵	0.214	0.4	0.001	0.62	L-Apr.2019	0.5
Major appliances ⁵	0.080	-0.2	0.000	1.10	—	—
Laundry equipment ⁶		-0.7		1.77	S-Mar.2019	-1.0
Other appliances ⁵	0.131	1.0	0.001	0.74	L-Jan.2019	1.3
Other household equipment and furnishings ⁵	0.494	0.6	0.003	0.58	S-Apr.2019	-1.0
Clocks, lamps, and decorator items ⁴	0.271	-2.0	-0.005	0.83	S-Dec.2018	-3.8

See footnotes at end of table.

Table 6. Consumer Price Index for All Urban Consumers (CPI-U): U.S. city average, by expenditure category, June 2019, 1-month analysis table — Continued
 [1982-84=100, unless otherwise noted]

Expenditure category	Relative importance May 2019	One Month				
		Seasonally adjusted percent change May 2019-Jun. 2019	Seasonally adjusted effect on All Items May 2019-Jun. 2019 ¹	Standard error, median price change ²	Largest (L) or Smallest (S) seasonally adjusted change since: ³	
					Date	Percent change
Indoor plants and flowers ¹²	0.091	1.0	0.001	0.94	L-Jul.2018	1.0
Dishes and flatware ^{4, 5}	0.054	6.1	0.003	1.31	L-Jan.2017	7.2
Nonelectric cookware and tableware ⁵	0.078	1.0	0.001	0.98	L-Dec.2018	1.2
Tools, hardware, outdoor equipment and supplies ⁵	0.659	0.2	0.001	0.45	L-Feb.2019	0.7
Tools, hardware and supplies ^{4, 5}	0.195	0.5	0.001	0.59	L-Feb.2019	0.8
Outdoor equipment and supplies ⁵	0.304	0.0	0.000	0.56	L-Feb.2019	1.0
Housekeeping supplies ⁴	0.833	0.2	0.002	0.29	L-Mar.2019	0.7
Household cleaning products ^{4, 5}	0.330	-0.1	0.000	0.39	—	—
Household paper products ^{4, 5}	0.224	0.5	0.001	0.45	S-Apr.2019	-0.5
Miscellaneous household products ^{4, 5}	0.279	0.3	0.001	0.55	L-Jan.2019	0.7
Apparel.....	2.997	1.1	0.034	0.51	L-Jan.2019	1.1
Men's and boys' apparel.....	0.744	0.8	0.006	0.92	L-Feb.2019	3.4
Men's apparel.....	0.578	0.5	0.003	0.95	L-Feb.2019	3.2
Men's suits, sport coats, and outerwear.....	0.105	-0.7	-0.001	2.00	L-Mar.2019	0.4
Men's underwear, nightwear, swimwear, and accessories.....	0.152	-1.1	-0.002	1.31	S-Jan.2019	-3.1
Men's shirts and sweaters ⁵	0.162	1.7	0.003	1.43	L-Feb.2019	2.6
Men's pants and shorts.....	0.151	1.5	0.002	1.30	L-Oct.2018	1.7
Boys' apparel.....	0.166	0.9	0.002	1.76	L-Feb.2019	2.4
Women's and girls' apparel.....	1.216	0.7	0.008	0.91	L-Jan.2019	1.5
Women's apparel.....	1.043	-0.4	-0.004	1.03	S-Mar.2019	-2.0
Women's outerwear.....	0.069	6.3	0.004	2.55	L-Sep.2018	7.8
Women's dresses.....	0.125	-1.1	-0.001	1.83	S-Apr.2019	-1.8
Women's suits and separates ⁵	0.542	0.2	0.001	1.32	L-Jan.2019	3.0
Women's underwear, nightwear, swimwear, and accessories ⁵	0.295	-1.4	-0.004	1.25	L-Apr.2019	2.1
Girls' apparel.....	0.172	6.8	0.012	1.59	L-EVER	—
Footwear.....	0.657	1.6	0.011	0.72	L-Jan.2019	2.5
Men's footwear ⁴	0.211	-0.4	-0.001	1.07	S-Apr.2019	-1.8
Boys' and girls' footwear.....	0.156	0.6	0.001	1.46	L-Feb.2019	2.0
Women's footwear.....	0.289	2.0	0.006	0.92	L-Jan.2019	2.0
Infants' and toddlers' apparel.....	0.137	-1.1	-0.002	1.42	S-Jan.2019	-2.1
Jewelry and watches ⁹	0.244	4.1	0.010	1.34	L-Jul.1991	4.8
Watches ^{4, 9}	0.098	1.3	0.001	1.49	L-Apr.2019	2.4
Jewelry ⁹	0.147	5.0	0.007	1.94	L-Jul.1991	5.9
Transportation commodities less motor fuel ¹¹	6.542	0.6	0.040	0.12	L-Nov.2018	1.0
New vehicles.....	3.691	0.1	0.002	0.21	—	—
New cars and trucks ^{5, 6}		0.1		0.22	L-Apr.2019	0.1
New cars ⁶		0.2		0.25	—	—
New trucks ^{13, 6}		-0.1		0.23	—	—
Used cars and trucks.....	2.359	1.6	0.037	0.02	L-Nov.2018	2.5
Motor vehicle parts and equipment ⁴	0.379	0.1	0.000	0.33	S-Apr.2019	-0.2
Tires ⁴	0.224	0.1	0.000	0.46	S-Apr.2019	-0.4
Vehicle accessories other than tires ^{4, 5}	0.155	0.0	0.000	0.55	S-Feb.2019	-0.6
Vehicle parts and equipment other than tires ^{4, 6}		-0.3		0.53	S-Dec.2018	-0.8
Motor oil, coolant, and fluids ^{4, 6}		0.7		0.90	S-Apr.2019	-5.2
Medical care commodities.....	1.687	-0.2	-0.004	0.20	L-Apr.2019	0.9
Medicinal drugs ¹¹	1.630	-0.3	-0.005	0.21	S-Feb.2019	-1.0
Prescription drugs.....	1.294	-0.6	-0.008	0.24	S-Feb.2019	-1.0
Nonprescription drugs ^{4, 11}	0.336	0.3	0.001	0.47	S-Mar.2019	0.1
Medical equipment and supplies ^{4, 11}	0.058	0.6	0.000	0.58	S-Mar.2019	-1.5
Recreation commodities ¹¹	1.768	-0.1	-0.001	0.21	S-Apr.2019	-0.3
Video and audio products ¹¹	0.214	-1.2	-0.003	0.47	S-Mar.2019	-1.7

See footnotes at end of table.

Table 6. Consumer Price Index for All Urban Consumers (CPI-U): U.S. city average, by expenditure category, June 2019, 1-month analysis table — Continued

[1982-84=100, unless otherwise noted]

Expenditure category	Relative importance May 2019	One Month				
		Seasonally adjusted percent change May 2019-Jun. 2019	Seasonally adjusted effect on All Items May 2019-Jun. 2019 ¹	Standard error, median price change ²	Largest (L) or Smallest (S) seasonally adjusted change since: ³	
					Date	Percent change
Televisions.....	0.088	-2.4	-0.002	0.69	S-Mar.2019	-4.2
Other video equipment ⁵	0.027	-1.2	0.000	0.78	L-Mar.2019	0.0
Audio equipment ⁴	0.044	-0.8	0.000	1.18	L-Apr.2019	4.2
Recorded music and music subscriptions ^{4, 5}	0.047	0.5	0.000	0.55	S-Apr.2019	-0.1
Pets and pet products ⁴	0.607	0.0	0.000	0.25	S-Oct.2018	0.0
Pet food ^{4, 5, 6}		0.1		0.29	S-Dec.2018	0.1
Purchase of pets, pet supplies, accessories ^{4, 5, 6}		-0.2		0.53	S-Oct.2018	-0.3
Sporting goods.....	0.486	0.3	0.001	0.48	L-Mar.2019	1.0
Sports vehicles including bicycles ⁴	0.278	1.0	0.003	0.74	L-Mar.2019	1.6
Sports equipment.....	0.201	-0.3	-0.001	0.43	S-Mar.2019	-0.4
Photographic equipment and supplies.....	0.032	1.1	0.000	0.81	L-Apr.2019	1.3
Film and photographic supplies ^{4, 5, 6}						
Photographic equipment ^{5, 6}		1.1		0.94	L-Jan.2019	1.4
Recreational reading materials ⁴	0.115	-0.3	0.000	0.86	S-Feb.2019	-2.7
Newspapers and magazines ^{4, 5}	0.072	0.5	0.000	0.94	S-Mar.2019	0.5
Recreational books ^{4, 5}	0.043	-1.6	-0.001	1.46	S-Jun.2017	-1.9
Other recreational goods ⁵	0.313	-0.1	0.000	0.48	S-Apr.2019	-1.6
Toys.....	0.242	-0.1	0.000	0.60	L-Jan.2019	-0.1
Toys, games, hobbies and playground equipment ^{1, 6}		0.2		0.78	L-Mar.2019	0.7
Sewing machines, fabric and supplies ^{4, 5}	0.024	0.4	0.000	1.54	L-Mar.2019	2.5
Music instruments and accessories ^{4, 5}	0.036	-0.3	0.000	0.52	S-Apr.2019	-0.5
Education and communication commodities ¹¹	0.513	-0.8	-0.004	0.41	S-Apr.2019	-1.1
Educational books and supplies.....	0.126	0.4	0.001	0.78	L-Feb.2019	0.8
College textbooks ^{4, 14, 6}		0.5		0.69	L-Feb.2019	0.8
Information technology commodities ¹¹	0.386	-1.2	-0.005	0.54	S-Apr.2019	-1.5
Computers, peripherals, and smart home assistant devices ⁷	0.297	-1.6	-0.005	0.64	S-Oct.2018	-1.7
Computer software and accessories ^{4, 5}	0.022	2.8	0.001	1.29	L-Jan.2018	2.9
Telephone hardware, calculators, and other consumer information items ^{4, 5}	0.067	-0.8	-0.001	0.92	L-Apr.2019	-0.2
Alcoholic beverages.....	0.958	0.3	0.002	0.18	S-Apr.2019	-0.2
Alcoholic beverages at home.....	0.597	0.3	0.002	0.26	S-Apr.2019	-0.3
Beer, ale, and other malt beverages at home.....	0.265	0.4	0.001	0.35	—	—
Distilled spirits at home.....	0.080	0.9	0.001	0.45	L-Feb.2019	1.1
Whiskey at home ^{4, 6}		0.6		0.53	L-Feb.2019	1.1
Distilled spirits, excluding whiskey, at home ^{4, 6}		0.2		0.63	L-Feb.2019	1.1
Wine at home.....	0.252	0.1	0.000	0.49	S-Apr.2019	-0.3
Alcoholic beverages away from home ⁴	0.361	0.2	0.001	0.19	L-Apr.2019	0.2
Beer, ale, and other malt beverages away from home ^{4, 5, 6}		0.2		0.17	L-Mar.2019	0.6
Wine away from home ^{4, 5, 6}		0.3		0.19	L-Jan.2019	0.4
Distilled spirits away from home ^{4, 5, 6}		0.1		0.19	—	—
Other goods ¹¹	1.548	-0.3	-0.005	0.19	S-Oct.2018	-0.6
Tobacco and smoking products.....	0.664	0.1	0.000	0.17	S-Apr.2019	-0.1
Cigarettes ⁵	0.589	0.0	0.000	0.18	S-Apr.2019	-0.1
Tobacco products other than cigarettes ^{4, 5}	0.060	0.2	0.000	0.41	S-Apr.2019	-0.6
Personal care products ⁴	0.675	-0.3	-0.002	0.26	S-Mar.2019	-0.4
Hair, dental, shaving, and miscellaneous personal care products ^{4, 5}	0.377	-0.5	-0.002	0.35	S-Apr.2018	-0.6
Cosmetics, perfume, bath, nail preparations and implements ⁴	0.292	0.0	0.000	0.41	L-Apr.2019	0.2
Miscellaneous personal goods ⁵	0.209	-1.7	-0.004	0.88	S-Oct.2018	-5.1
Stationery, stationery supplies, gift wrap ⁶		1.0		0.93	L-Feb.2019	1.6

See footnotes at end of table.

Table 6. Consumer Price Index for All Urban Consumers (CPI-U): U.S. city average, by expenditure category, June 2019, 1-month analysis table — Continued
 [1982-84=100, unless otherwise noted]

Expenditure category	Relative importance May 2019	One Month				
		Seasonally adjusted percent change May 2019-Jun. 2019	Seasonally adjusted effect on All Items May 2019-Jun. 2019 ¹	Standard error, median price change ²	Largest (L) or Smallest (S) seasonally adjusted change since: ³	
					Date	Percent change
Infants' equipment ^{4, 8, 6}		0.3		1.15	S-Mar.2019	-0.7
Services less energy services.....	59.511	0.3	0.161	0.04	L-Apr.2019	0.3
Shelter.....	33.208	0.3	0.103	0.07	L-Apr.2019	0.4
Rent of shelter ¹⁵	32.840	0.3	0.107	0.07	—	—
Rent of primary residence.....	7.901	0.4	0.034	0.04	L-Apr.2019	0.4
Lodging away from home ⁵	1.039	-0.6	-0.006	1.80	S-Oct.2018	-1.1
Housing at school, excluding board ¹⁵	0.112	0.2	0.000	0.05	S-Apr.2019	0.2
Other lodging away from home including hotels and motels.....	0.926	-0.7	-0.007	2.03	S-Oct.2018	-1.3
Owners' equivalent rent of residences ¹⁵	23.900	0.3	0.074	0.04	—	—
Owners' equivalent rent of primary residence ¹⁵ ..	22.568	0.3	0.071	0.04	—	—
Tenants' and household insurance ^{4, 5}	0.368	0.4	0.001	0.12	L-Jul.2018	0.6
Water and sewer and trash collection services ⁵	1.088	0.3	0.004	0.09	L-Apr.2019	0.3
Water and sewerage maintenance.....	0.821	0.4	0.004	0.11	L-Apr.2019	0.4
Garbage and trash collection ^{4, 13}	0.266	0.0	0.000	0.22	S-Jan.2019	-2.1
Household operations ^{4, 5}	0.875	2.8	0.024	0.16	L-EVER	—
Domestic services ^{4, 5}	0.295	0.1	0.000	0.06	L-Mar.2019	0.2
Gardening and lawncare services ^{4, 5}	0.289	6.1	0.018	0.17	L-EVER	—
Moving, storage, freight expense ⁵	0.103	-0.6	-0.001	0.65	S-Feb.2019	-2.2
Repair of household items ^{4, 5}	0.112	2.3	0.003	0.16	L-Apr.2019	6.4
Medical care services.....	6.961	0.4	0.028	0.10	S-Apr.2019	0.2
Professional services.....	3.220	0.4	0.013	0.11	L-Mar.2018	0.4
Physicians' services.....	1.710	0.1	0.003	0.21	—	—
Dental services.....	0.783	1.1	0.008	0.13	L-Feb.2018	1.1
Eyeglasses and eye care ^{4, 9}	0.314	0.1	0.000	0.24	S-Apr.2019	-0.1
Services by other medical professionals ^{4, 9}	0.412	0.1	0.000	0.09	S-Apr.2019	-0.2
Hospital and related services.....	2.583	-0.1	-0.002	0.15	S-Apr.2019	-0.4
Hospital services ¹⁶	2.302	-0.1	-0.002	0.17	S-Apr.2019	-0.5
Inpatient hospital services ^{16, 6}		0.0		0.23	S-Apr.2019	-0.3
Outpatient hospital services ^{9, 6}		-0.2		0.22	S-Apr.2019	-0.8
Nursing homes and adult day services ¹⁶	0.193	0.3	0.001	0.11	L-Jan.2019	0.4
Care of invalids and elderly at home ^{4, 8}	0.087	0.1	0.000	0.20	L-Apr.2019	0.3
Health insurance ^{4, 8}	1.158	1.3	0.015	0.11	S-Mar.2019	1.3
Transportation services.....	5.936	0.0	-0.002	0.13	S-Mar.2019	0.0
Leased cars and trucks ^{4, 14}	0.619	-0.7	-0.004	0.36	L-Apr.2019	-0.1
Car and truck rental ⁵	0.109	4.0	0.005	1.67	L-Jun.2017	7.2
Motor vehicle maintenance and repair ⁴	1.125	0.4	0.004	0.14	L-Apr.2019	0.4
Motor vehicle body work ⁴	0.056	0.8	0.000	0.13	L-Apr.2019	1.0
Motor vehicle maintenance and servicing ⁴	0.636	0.4	0.002	0.24	L-Mar.2019	0.9
Motor vehicle repair ^{4, 5}	0.369	0.2	0.001	0.16	L-Apr.2019	0.5
Motor vehicle insurance.....	2.350	0.3	0.006	0.14	L-Oct.2018	0.4
Motor vehicle fees ^{4, 5}	0.540	-0.1	0.000	0.20	S-Dec.2018	-0.2
State motor vehicle registration and license fees ^{4, 5}	0.277	-0.1	0.000	0.07	S-Mar.2019	-0.1
Parking and other fees ^{4, 5}	0.246	0.0	0.000	0.34	S-Dec.2018	-0.4
Parking fees and tolls ^{5, 6}		0.2		0.17	S-Mar.2019	0.1
Automobile service clubs ^{4, 5, 6}						
Public transportation.....	1.192	-1.1	-0.012	0.45	S-Jun.2018	-1.2
Airline fares.....	0.739	-0.9	-0.006	0.68	S-Jan.2019	-0.9
Other intercity transportation.....	0.168	-2.2	-0.004	0.71	S-Oct.2004	-2.2
Intercity bus fare ^{4, 7, 6}		0.2		1.53	S-Feb.2019	-3.6
Intercity train fare ^{4, 7, 6}						
Ship fare ^{4, 5, 6}		-2.9		0.77	S-Jan.2009	-3.2

See footnotes at end of table.

Table 6. Consumer Price Index for All Urban Consumers (CPI-U): U.S. city average, by expenditure category, June 2019, 1-month analysis table — Continued

[1982-84=100, unless otherwise noted]

Expenditure category	Relative importance May 2019	One Month				
		Seasonally adjusted percent change May 2019-Jun. 2019	Seasonally adjusted effect on All Items May 2019-Jun. 2019 ¹	Standard error, median price change ²	Largest (L) or Smallest (S) seasonally adjusted change since: ³	
					Date	Percent change
Intracity transportation ⁴	0.278	-1.0	-0.003	0.34	S-Jun.2018	-1.0
Intracity mass transit ^{4, 11, 6}		0.0		0.05	S-Apr.2019	0.0
Recreation services ¹¹	3.844	-0.2	-0.007	0.22	L-Apr.2019	0.2
Video and audio services ¹¹	1.579	0.0	0.000	0.14	L-Jan.2019	0.4
Cable and satellite television service ¹³	1.490	-0.1	-0.002	0.13	—	—
Video discs and other media, including rental of video ^{4, 5}	0.089	1.5	0.001	0.99	L-Feb.2019	2.1
Video discs and other media ^{4, 5, 6}		1.3		1.95	L-Feb.2019	3.1
Rental of video discs and other media ^{4, 5, 6}		2.2		0.19	L-Mar.2019	2.4
Pet services including veterinary ⁵	0.417	0.2	0.001	0.22	S-Apr.2019	0.1
Pet services ^{4, 5, 6}		0.4		0.14	L-Jan.2019	0.4
Veterinarian services ^{5, 6}		0.3		0.17	S-Apr.2019	0.1
Photographers and photo processing ^{4, 5}	0.037	-0.9	0.000	0.38	S-Apr.2019	-1.3
Photographer fees ^{4, 5, 6}		0.2		0.04	S-Apr.2019	0.0
Photo processing ^{4, 5, 6}		-1.8		0.61	S-Apr.2019	-2.9
Other recreation services ⁵	1.809	-0.4	-0.007	0.39	L-Apr.2019	0.6
Club membership for shopping clubs, fraternal, or other organizations, or participant sports fees ^{4, 5}	0.664	-0.3	-0.002	0.28	L-Apr.2019	0.5
Admissions.....	0.655	-0.9	-0.006	0.75	S-Feb.2019	-2.2
Admission to movies, theaters, and concerts ^{4, 5, 6}		-0.3		0.63	S-Nov.2018	-0.6
Admission to sporting events ^{4, 5, 6}		-0.2		1.92	L-Apr.2019	2.7
Fees for lessons or instructions ^{4, 9}	0.218	0.2	0.000	0.49	L-Mar.2019	0.7
Education and communication services ¹¹	5.969	0.2	0.010	0.08	—	—
Tuition, other school fees, and childcare.....	2.882	0.1	0.003	0.08	S-Mar.2018	0.1
College tuition and fees.....	1.596	-0.1	-0.002	0.13	S-Aug.2017	-0.3
Elementary and high school tuition and fees.....	0.332	0.3	0.001	0.06	L-Apr.2019	0.3
Child care and nursery school ¹²	0.803	0.4	0.003	0.07	S-Apr.2019	0.1
Technical and business school tuition and fees ⁵	0.032	0.5	0.000	0.11	—	—
Postage and delivery services ⁵	0.112	0.2	0.000	0.05	—	—
Postage.....	0.098	0.2	0.000	0.00	S-Mar.2019	0.2
Delivery services ⁵	0.014	0.4	0.000	0.34	L-Apr.2019	0.6
Telephone services ^{4, 5}	2.196	0.2	0.004	0.07	L-Apr.2019	0.2
Wireless telephone services ^{4, 5}	1.625	0.1	0.002	0.08	L-Apr.2019	0.2
Land-line telephone services ^{4, 11}	0.570	0.4	0.002	0.17	S-Apr.2019	0.1
Internet services and electronic information providers ⁵	0.771	0.3	0.002	0.29	L-Feb.2019	0.3
Other personal services ^{4, 11}	1.630	0.1	0.002	0.11	S-Apr.2019	-0.2
Personal care services ⁴	0.624	0.2	0.001	0.17	L-Feb.2019	0.3
Haircuts and other personal care services ^{4, 5}	0.624	0.2	0.001	0.17	L-Feb.2019	0.3
Miscellaneous personal services.....	1.006	0.0	0.000	0.13	S-Apr.2019	-0.4
Legal services ^{4, 9}	0.301	0.1	0.000	0.06	L-Feb.2019	0.9
Funeral expenses ^{4, 9}	0.127	0.0	0.000	0.20	S-Jan.2019	0.0
Laundry and dry cleaning services ^{4, 5}	0.241	0.4	0.001	0.24	L-Mar.2019	0.8
Apparel services other than laundry and dry cleaning ^{4, 5}	0.029	1.0	0.000	0.33	L-Nov.2018	1.3
Financial services ⁹	0.237	-0.6	-0.001	0.33	S-Mar.2019	-3.7
Checking account and other bank services ^{4, 5, 6}		0.0		0.05	—	—
Tax return preparation and other accounting fees ^{5, 6}		-0.9		0.34	S-Mar.2019	-7.8
Special aggregate indexes						

See footnotes at end of table.

Table 6. Consumer Price Index for All Urban Consumers (CPI-U): U.S. city average, by expenditure category, June 2019, 1-month analysis table — Continued

[1982-84=100, unless otherwise noted]

Expenditure category	Relative importance May 2019	One Month				
		Seasonally adjusted percent change May 2019-Jun. 2019	Seasonally adjusted effect on All Items May 2019-Jun. 2019 ¹	Standard error, median price change ²	Largest (L) or Smallest (S) seasonally adjusted change since: ³	
					Date	Percent change
All items less food.....	86.763	0.1	0.053	0.04	L-Apr.2019	0.4
All items less shelter.....	66.792	-0.1	-0.044	0.05	S-Jan.2019	-0.2
All items less food and shelter.....	53.555	-0.1	-0.050	0.06	—	—
All items less food, shelter, and energy.....	45.652	0.3	0.129	0.06	L-Jan.2018	0.3
All items less food, shelter, energy, and used cars and trucks.....	43.293	0.2	0.092	0.06	L-Jan.2019	0.2
All items less medical care.....	91.352	0.0	0.034	0.04	S-Jan.2019	0.0
All items less energy.....	92.097	0.3	0.238	0.04	L-Jan.2018	0.3
Commodities.....	37.181	-0.2	-0.076	0.06	S-Jan.2019	-0.3
Commodities less food, energy, and used cars and trucks.....	16.990	0.2	0.037	0.11	L-Jan.2019	0.4
Commodities less food.....	23.945	-0.3	-0.082	0.09	S-Jan.2019	-0.6
Commodities less food and beverages.....	22.987	-0.4	-0.084	0.09	S-Jan.2019	-0.6
Services.....	62.819	0.2	0.137	0.05	L-Apr.2019	0.3
Services less rent of shelter ¹⁵	29.979	0.1	0.032	0.06	L-Apr.2019	0.1
Services less medical care services.....	55.858	0.2	0.104	0.05	L-Apr.2019	0.3
Durables.....	9.828	0.5	0.046	0.11	L-Oct.2018	0.5
Nondurables.....	27.353	-0.6	-0.161	0.09	S-Jan.2019	-0.8
Nondurables less food.....	14.117	-1.3	-0.180	0.15	S-Jan.2019	-1.4
Nondurables less food and beverages.....	13.159	-1.4	-0.182	0.16	S-Jan.2019	-1.5
Nondurables less food, beverages, and apparel.....	10.162	-2.2	-0.223	0.11	S-Jan.2019	-2.3
Nondurables less food and apparel.....	11.120	-2.0	-0.221	0.10	S-Jan.2019	-2.1
Housing.....	42.000	0.3	0.113	0.07	L-Apr.2019	0.3
Education and communication ⁵	6.482	0.1	0.006	0.08	—	—
Education ⁵	3.008	0.1	0.003	0.09	S-Mar.2018	0.1
Communication ⁵	3.474	0.1	0.002	0.10	—	—
Information and information processing ⁵	3.362	0.1	0.002	0.10	L-Sep.2018	0.1
Information technology, hardware and services ¹⁷	1.166	-0.2	-0.002	0.25	S-Apr.2019	-0.4
Recreation ⁵	5.612	-0.2	-0.008	0.15	L-Apr.2019	0.0
Video and audio ⁵	1.793	-0.2	-0.003	0.13	—	—
Pets, pet products and services ⁵	1.024	0.1	0.001	0.18	S-Nov.2018	0.1
Photography ⁵	0.071	0.0	0.000	0.45	S-Apr.2019	-0.1
Food and beverages.....	14.195	0.1	0.008	0.08	S-Apr.2019	-0.1
Domestically produced farm food.....	6.016	-0.1	-0.005	0.13	S-Apr.2019	-0.4
Other services.....	11.443	0.0	0.004	0.09	—	—
Apparel less footwear.....	2.340	1.0	0.023	0.57	L-Sep.2018	1.4
Fuels and utilities.....	4.579	-0.5	-0.024	0.25	—	—
Household energy.....	3.492	-0.8	-0.027	0.32	—	—
Medical care.....	8.648	0.3	0.025	0.10	—	—
Transportation.....	16.889	-0.7	-0.113	0.08	S-Jan.2019	-1.3
Private transportation.....	15.697	-0.7	-0.101	0.08	S-Jan.2019	-1.3
New and used motor vehicles ⁵	6.891	0.6	0.040	0.12	L-Nov.2018	0.9
Utilities and public transportation.....	9.274	-0.4	-0.040	0.14	S-Jun.2018	-0.5
Household furnishings and operations.....	4.213	0.8	0.033	0.16	L-Feb.1991	0.9
Other goods and services.....	3.178	-0.1	-0.004	0.12	S-Dec.2017	-0.1
Personal care ⁴	2.514	-0.2	-0.004	0.14	S-Mar.2019	-0.3

¹ The 'effect' of an item category is a measure of that item's contribution to the All items price change. For example, if the Food index had an effect of 0.40, and the All items index rose 1.2 percent, then the increase in food prices contributed 0.40 / 1.2, or 33.3 percent, to that All items increase. Said another way, had food prices been unchanged for that month the change in the All items index would have been 1.2 percent minus 0.40, or 0.8 percent. Effects can be negative as well. For example, if the effect of food was a negative 0.1, and the All items index rose 0.5 percent, the All items index actually would have been 0.1 percent higher (or 0.6 percent) had food prices been unchanged. Since food prices fell while prices overall were rising, the contribution of food to the All items price change was negative (in this case, -0.1 / 0.5, or minus 20 percent).

² A statistic's margin of error is often expressed as its point estimate plus or minus two standard errors. For example, if a CPI category rose 0.6 percent, and its standard error was 0.15 percent, the margin of error on this item's 1-month percent change would be 0.6 percent, plus or minus 0.3 percent.

³ If the current seasonally adjusted 1-month percent change is greater than the previous published 1-month percent change, then this column identifies the closest prior month with a 1-month percent change as (L)arge as or (L)arger than the current 1-month change. If the current 1-month percent change is smaller than the previous published 1-month percent change, the most recent month with a change as (S)mall or (S)maller than the current month change is identified. If the current and previous published 1-month percent changes are equal, a dash will appear. Standard numerical comparisons are used. For example, 0.8% is greater than 0.6%, -0.4% is less than -0.2%, and -0.2% is less than 0.0%. Note that a (L)arger change can be a smaller decline, for example, a -0.2% change is larger than a -0.4% change, but still represents a decline in the price index. Likewise, (S)maller changes can be increases, for example, a 0.6% change is smaller than 0.8%, but still represents an increase in the price index. In this context, a -0.2% change is considered to be smaller than a 0.0% change.

⁴ Not seasonally adjusted.

⁵ Indexes on a December 1997=100 base.

⁶ Special indexes based on a substantially smaller sample. These series do not contribute to the all items index aggregation and therefore do not have a relative importance or effect.

⁷ Indexes on a December 2007=100 base.

⁸ Indexes on a December 2005=100 base.

⁹ Indexes on a December 1986=100 base.

¹⁰ Indexes on a December 1993=100 base.

¹¹ Indexes on a December 2009=100 base.

¹² Indexes on a December 1990=100 base.

¹³ Indexes on a December 1983=100 base.

¹⁴ Indexes on a December 2001=100 base.

¹⁵ Indexes on a December 1982=100 base.

¹⁶ Indexes on a December 1996=100 base.

¹⁷ Indexes on a December 1988=100 base.

Table 7. Consumer Price Index for All Urban Consumers (CPI-U): U.S. city average, by expenditure category, June 2019, 12-month analysis table
 [1982-84=100, unless otherwise noted]

Expenditure category	Relative importance May 2019	Twelve Month				
		Unadjusted percent change Jun. 2018- Jun. 2019	Unadjusted effect on All Items Jun. 2018- Jun. 2019 ¹	Standard error, median price change ^{2, 3}	Largest (L) or Smallest (S) unadjusted change since: ⁴	
					Date	Percent change
All items.....	100.000	1.6		-	S-Feb.2019	1.5
Food.....	13.237	1.9	0.252	-	S-Apr.2019	1.8
Food at home.....	7.212	0.9	0.068	-	S-Apr.2019	0.7
Cereals and bakery products.....	0.955	1.2	0.011	-	S-Jan.2019	1.0
Cereals and cereal products.....	0.306	1.0	0.003	-	L-Mar.2019	1.9
Flour and prepared flour mixes.....	0.040	-1.0	0.000	-	L-Mar.2019	-0.4
Breakfast cereal.....	0.148	1.6	0.002	-	L-Mar.2019	1.9
Rice, pasta, cornmeal.....	0.117	1.0	0.001	-	-	-
Rice ^{5, 6}		1.2		-	-	-
Bakery products.....	0.650	1.2	0.008	-	S-Sep.2018	0.8
Bread ⁵	0.192	1.5	0.003	-	S-Oct.2018	1.5
White bread ⁶		1.8		-	S-Mar.2019	1.5
Bread other than white ⁶		1.9		-	S-Nov.2018	1.7
Fresh biscuits, rolls, muffins ⁵	0.091	0.2	0.000	-	S-May.2018	0.2
Cakes, cupcakes, and cookies.....	0.162	0.7	0.001	-	S-Jan.2019	0.3
Cookies ⁶		-0.8		-	S-Jan.2019	-1.1
Fresh cakes and cupcakes ⁶		3.1		-	L-Mar.2019	3.1
Other bakery products.....	0.205	1.9	0.004	-	S-Apr.2019	1.7
Fresh sweetrolls, coffeecakes, doughnuts ⁶		5.7		-	S-Apr.2019	4.0
Crackers, bread, and cracker products ⁶		2.0		-	S-Apr.2019	0.6
Frozen and refrigerated bakery products, pies, tarts, turnovers ⁶		-0.5		-	S-Aug.2018	-2.0
Meats, poultry, fish, and eggs.....	1.586	0.3	0.004	-	S-Apr.2019	-1.1
Meats, poultry, and fish.....	1.504	1.0	0.015	-	S-Apr.2019	0.0
Meats.....	0.943	1.3	0.012	-	S-Apr.2019	-0.3
Beef and veal.....	0.430	0.6	0.003	-	S-Apr.2019	0.0
Uncooked ground beef.....	0.169	-0.8	-0.001	-	S-Apr.2019	-2.0
Uncooked beef roasts ⁵	0.063	4.1	0.003	-	S-Apr.2019	1.7
Uncooked beef steaks ⁵	0.161	0.8	0.001	-	S-Apr.2019	0.8
Uncooked other beef and veal ⁵	0.037	0.7	0.000	-	S-Apr.2017	-2.1
Pork.....	0.296	2.0	0.006	-	S-Apr.2019	-0.4
Bacon, breakfast sausage, and related products ⁵	0.132	4.5	0.006	-	L-Jan.2018	4.8
Bacon and related products ⁶		7.0		-	L-Jan.2018	8.0
Breakfast sausage and related products ^{5, 6}		0.8		-	L-Jul.2018	1.4
Ham.....	0.054	-1.4	-0.001	-	S-Dec.2018	-2.3
Ham, excluding canned ⁶		-2.7		-	S-Oct.2018	-4.3
Pork chops.....	0.044	-1.0	0.000	-	S-Jan.2019	-3.0
Other pork including roasts, steaks, and ribs ⁵	0.066	1.7	0.001	-	S-Apr.2019	-1.4
Other meats.....	0.217	1.8	0.004	-	L-Dec.2015	1.8
Frankfurters ⁶		3.8		-	L-Jun.2018	4.4
Lunchmeats ^{5, 6}		1.7		-	L-Dec.2015	2.4
Lamb and organ meats ⁶				-		
Lamb and mutton ^{5, 6}				-		
Poultry.....	0.310	-0.4	-0.001	-	-	-
Chicken ⁵	0.255	-0.3	-0.001	-	S-Mar.2019	-0.9
Fresh whole chicken ⁶		1.5		-	L-Aug.2018	1.9
Fresh and frozen chicken parts ⁶		-1.2		-	S-Dec.2016	-2.8
Other uncooked poultry including turkey ⁵	0.055	-0.8	0.000	-	L-Apr.2019	-0.8
Fish and seafood.....	0.251	1.7	0.004	-	S-Apr.2019	1.3
Fresh fish and seafood ⁵	0.129	1.2	0.002	-	S-Apr.2019	1.1
Processed fish and seafood ⁵	0.122	2.1	0.003	-	S-Apr.2019	1.5
Shelf stable fish and seafood ⁶		4.6		-	S-Mar.2019	3.3

See footnotes at end of table.

Table 7. Consumer Price Index for All Urban Consumers (CPI-U): U.S. city average, by expenditure category, June 2019, 12-month analysis table — Continued
 [1982-84=100, unless otherwise noted]

Expenditure category	Relative importance May 2019	Twelve Month				
		Unadjusted percent change Jun. 2018- Jun. 2019	Unadjusted effect on All Items Jun. 2018- Jun. 2019 ¹	Standard error, median price change ^{2, 3}	Largest (L) or Smallest (S) unadjusted change since: ⁴	
					Date	Percent change
Frozen fish and seafood ⁶		1.7		—	S-Apr.2019	0.6
Eggs.....	0.083	-12.4	-0.011	—	L-Mar.2019	-8.0
Dairy and related products.....	0.719	0.6	0.004	—	S-Apr.2019	0.3
Milk ⁵	0.199	1.9	0.004	—	S-Feb.2019	0.3
Fresh whole milk ⁶		2.7		—	L-Dec.2014	5.2
Fresh milk other than whole ^{5, 6}		1.9		—	S-Feb.2019	0.8
Cheese and related products.....	0.231	-1.2	-0.003	—	—	—
Ice cream and related products.....	0.102	-1.1	-0.001	—	S-Feb.2018	-2.5
Other dairy and related products ⁵	0.187	2.4	0.004	—	L-Apr.2015	3.4
Fruits and vegetables.....	1.278	1.0	0.013	—	S-Jan.2019	0.9
Fresh fruits and vegetables.....	1.009	0.9	0.009	—	S-Nov.2018	-0.1
Fresh fruits.....	0.534	-1.9	-0.010	—	S-Nov.2018	-2.3
Apples.....	0.077	3.4	0.003	—	L-Oct.2017	3.7
Bananas.....	0.078	0.3	0.000	—	L-Dec.2018	0.9
Citrus fruits ⁵	0.150	-5.0	-0.008	—	S-May 2015	-8.0
Oranges, including tangerines ⁶		-6.7		—	S-Oct.2018	-6.9
Other fresh fruits ⁵	0.229	-2.2	-0.005	—	S-Jan.2019	-3.2
Fresh vegetables.....	0.474	4.1	0.019	—	S-Jan.2019	3.6
Potatoes.....	0.080	2.0	0.002	—	S-Dec.2018	1.8
Lettuce.....	0.061	9.1	0.005	—	L-Apr.2019	15.9
Tomatoes.....	0.073	-0.9	-0.001	—	S-Jan.2019	-5.0
Other fresh vegetables.....	0.260	5.1	0.013	—	S-Jan.2019	4.9
Processed fruits and vegetables ⁵	0.270	1.7	0.005	—	L-Mar.2019	2.7
Canned fruits and vegetables ⁵	0.152	3.9	0.006	—	S-Apr.2019	2.9
Canned fruits ^{5, 6}		2.0		—	L-Mar.2019	8.6
Canned vegetables ^{5, 6}		5.3		—	S-Apr.2019	3.5
Frozen fruits and vegetables ⁵	0.076	0.2	0.000	—	L-Oct.2017	0.3
Frozen vegetables ⁶		2.3		—	L-Apr.2016	3.4
Other processed fruits and vegetables including dried ⁵	0.043	-3.1	-0.001	—	—	—
Dried beans, peas, and lentils ^{5, 6}		-6.2		—	L-Apr.2019	-5.4
Nonalcoholic beverages and beverage materials.....	0.867	2.3	0.020	—	S-Apr.2019	2.2
Juices and nonalcoholic drinks ⁵	0.617	2.9	0.017	—	S-Dec.2018	2.5
Carbonated drinks.....	0.261	3.2	0.008	—	S-Nov.2018	3.0
Frozen noncarbonated juices and drinks ⁵	0.008	-0.2	0.000	—	S-Sep.2018	-0.7
Nonfrozen noncarbonated juices and drinks ⁵	0.348	2.7	0.009	—	S-Apr.2019	2.0
Beverage materials including coffee and tea ⁵	0.249	0.9	0.002	—	L-Dec.2017	1.1
Coffee.....	0.159	0.3	0.001	—	L-Dec.2017	1.7
Roasted coffee ⁶		0.2		—	L-Dec.2017	1.3
Instant coffee ⁶		3.5		—	L-Feb.2015	5.2
Other beverage materials including tea ⁵	0.090	1.9	0.002	—	S-Apr.2019	1.2
Other food at home.....	1.807	0.9	0.016	—	L-Nov.2017	0.9
Sugar and sweets.....	0.275	2.1	0.006	—	L-Dec.2015	2.6
Sugar and sugar substitutes.....	0.042	-0.7	0.000	—	S-Apr.2019	-0.7
Candy and chewing gum ⁵	0.181	3.6	0.007	—	L-Nov.2015	3.9
Other sweets ⁵	0.052	-0.8	0.000	—	S-Apr.2019	-1.4
Fats and oils.....	0.211	0.1	0.000	—	S-Apr.2019	-2.0
Butter and margarine ⁵	0.060	1.4	0.001	—	L-Mar.2019	3.4
Butter ⁶		0.8		—	S-Apr.2019	-1.6
Margarine ⁶		1.5		—	L-Oct.2017	2.3
Salad dressing ⁵	0.051	2.9	0.001	—	L-May 2012	5.0
Other fats and oils including peanut butter ⁵	0.100	-2.1	-0.002	—	S-Apr.2019	-2.9
Peanut butter ^{5, 6}		-0.5		—	L-Jan.2019	1.9
Other foods.....	1.321	0.7	0.010	—	L-Nov.2017	0.7

See footnotes at end of table.

Table 7. Consumer Price Index for All Urban Consumers (CPI-U): U.S. city average, by expenditure category, June 2019, 12-month analysis table — Continued

[1982-84=100, unless otherwise noted]

Expenditure category	Relative importance May 2019	Twelve Month				
		Unadjusted percent change Jun. 2018- Jun. 2019	Unadjusted effect on All Items Jun. 2018- Jun. 2019 ¹	Standard error, median price change ^{2, 3}	Largest (L) or Smallest (S) unadjusted change since: ⁴	
					Date	Percent change
Soups.....	0.083	0.3	0.000	—	S-Apr.2019	-0.3
Frozen and freeze dried prepared foods.....	0.230	-0.1	0.000	—	L-Apr.2019	0.3
Snacks.....	0.304	0.5	0.001	—	L-Mar.2019	0.8
Spices, seasonings, condiments, sauces.....	0.266	0.8	0.002	—	L-Mar.2019	1.5
Salt and other seasonings and spices ^{5, 6}		1.0		—	S-Apr.2019	1.0
Olives, pickles, relishes ^{5, 6}		0.3		—	S-Sep.2018	-3.9
Sauces and gravies ^{5, 6}		0.7		—	L-Apr.2019	0.8
Other condiments ⁶		0.3		—	L-Apr.2019	1.3
Baby food ⁵	0.050	4.8	0.002	—	L-Apr.2019	6.0
Other miscellaneous foods ⁵	0.388	1.0	0.004	—	L-Nov.2015	1.0
Prepared salads ^{7, 6}		-0.6		—	L-Nov.2018	-0.5
Food away from home.....	6.024	3.1	0.184	—	L-Apr.2019	3.1
Full service meals and snacks ⁵	2.993	3.3	0.096	—	L-May 2009	3.4
Limited service meals and snacks ⁵	2.566	3.0	0.077	—	S-Feb.2019	3.0
Food at employee sites and schools ⁵	0.179	1.4	0.003	—	—	—
Food at elementary and secondary schools ^{8, 6}		1.6		—	—	—
Food from vending machines and mobile vendors ⁵	0.092	4.5	0.004	—	S-Apr.2019	4.0
Other food away from home ⁵	0.195	2.0	0.004	—	L-Mar.2019	3.9
Energy.....	7.903	-3.4	-0.276	—	S-Feb.2019	-5.0
Energy commodities.....	4.595	-5.4	-0.253	—	S-Feb.2019	-8.6
Fuel oil and other fuels.....	0.184	-4.9	-0.009	—	S-Jan.2019	-5.9
Fuel oil.....	0.113	-5.6	-0.006	—	S-Jan.2019	-8.1
Propane, kerosene, and firewood ⁹	0.071	-3.8	-0.003	—	S-May 2016	-5.0
Motor fuel.....	4.411	-5.4	-0.243	—	S-Feb.2019	-8.9
Gasoline (all types).....	4.321	-5.4	-0.239	—	S-Feb.2019	-9.1
Gasoline, unleaded regular ⁶		-5.7		—	S-Feb.2019	-9.5
Gasoline, unleaded midgrade ^{10, 6}		-4.3		—	S-Feb.2019	-7.5
Gasoline, unleaded premium ⁶		-3.3		—	S-Feb.2019	-6.4
Other motor fuels ⁵	0.090	-4.9	-0.005	—	S-Sep.2016	-6.2
Energy services.....	3.308	-0.7	-0.023	—	—	—
Electricity.....	2.578	-0.3	-0.008	—	S-Sep.2018	-1.2
Utility (piped) gas service.....	0.730	-2.1	-0.016	—	L-Apr.2019	-1.9
All items less food and energy.....	78.860	2.1	1.673	—	L-Apr.2019	2.1
Commodities less food and energy commodities.....	19.350	0.2	0.030	—	L-Jan.2019	0.3
Household furnishings and supplies ¹¹	3.338	1.6	0.053	—	L-EVER	—
Window and floor coverings and other linens ⁵	0.250	-2.8	-0.007	—	S-Apr.2019	-3.0
Floor coverings ⁵	0.056	3.5	0.002	—	L-Dec.2018	4.2
Window coverings ⁵	0.042	-6.1	-0.003	—	L-Mar.2019	-3.6
Other linens ⁵	0.152	-4.0	-0.006	—	S-Feb.2019	-4.0
Furniture and bedding.....	0.888	3.1	0.027	—	L-Mar.2019	3.3
Bedroom furniture.....	0.317	1.7	0.006	—	L-Jan.2012	2.0
Living room, kitchen, and dining room furniture ⁵	0.431	3.6	0.016	—	L-Mar.2019	4.4
Other furniture ⁵	0.129	4.9	0.006	—	S-Apr.2019	3.7
Infants' furniture ^{8, 6}		11.3		—	S-Dec.2018	-4.7
Appliances ⁵	0.214	2.6	0.005	—	L-Apr.2019	3.3
Major appliances ⁵	0.080	2.9	0.002	—	S-Apr.2018	1.6
Laundry equipment ⁶		-4.0		—	S-Mar.2018	-7.2
Other appliances ⁵	0.131	2.3	0.003	—	L-Mar.2019	2.6
Other household equipment and furnishings ⁵	0.494	0.0	0.000	—	L-Sep.2008	0.0
Clocks, lamps, and decorator items.....	0.271	-1.3	-0.004	—	S-Apr.2019	-3.8
Indoor plants and flowers ¹²	0.091	1.8	0.002	—	L-Oct.2018	3.4
Dishes and flatware ⁵	0.054	6.3	0.003	—	L-EVER	—
Nonelectric cookware and tableware ⁵	0.078	-1.9	-0.002	—	L-Mar.2019	-1.6

See footnotes at end of table.

Table 7. Consumer Price Index for All Urban Consumers (CPI-U): U.S. city average, by expenditure category, June 2019, 12-month analysis table — Continued

[1982-84=100, unless otherwise noted]

Expenditure category	Relative importance May 2019	Twelve Month				
		Unadjusted percent change Jun. 2018- Jun. 2019	Unadjusted effect on All Items Jun. 2018- Jun. 2019 ¹	Standard error, median price change ^{2, 3}	Largest (L) or Smallest (S) unadjusted change since: ⁴	
					Date	Percent change
Tools, hardware, outdoor equipment and supplies ⁵ . . .	0.659	1.1	0.007	—	L-Mar.2019	1.2
Tools, hardware and supplies ⁵	0.195	1.6	0.003	—	L-Feb.2019	1.8
Outdoor equipment and supplies ⁵	0.304	0.6	0.002	—	L-Mar.2019	1.5
Housekeeping supplies	0.833	2.5	0.021	—	S-Apr.2019	2.2
Household cleaning products ⁵	0.330	1.5	0.005	—	S-Jul.2018	1.4
Household paper products ⁵	0.224	5.6	0.012	—	L-Aug.2009	6.9
Miscellaneous household products ⁵	0.279	1.2	0.003	—	S-Apr.2019	0.9
Apparel	2.997	-1.3	-0.040	—	L-Feb.2019	-0.8
Men's and boys' apparel	0.744	-0.1	-0.001	—	L-Mar.2019	1.1
Men's apparel	0.578	-0.6	-0.004	—	L-Mar.2019	-0.2
Men's suits, sport coats, and outerwear	0.105	0.3	0.000	—	S-Apr.2019	0.0
Men's underwear, nightwear, swimwear, and accessories	0.152	1.5	0.002	—	S-Jan.2019	0.1
Men's shirts and sweaters ⁵	0.162	-2.8	-0.005	—	L-Mar.2019	-2.7
Men's pants and shorts	0.151	-0.9	-0.001	—	L-Oct.2018	-0.5
Boys' apparel	0.166	1.7	0.003	—	L-Mar.2019	6.2
Women's and girls' apparel	1.216	-3.6	-0.046	—	L-Feb.2019	-3.6
Women's apparel	1.043	-4.9	-0.053	—	L-Mar.2019	-4.6
Women's outerwear	0.069	5.0	0.003	—	L-Feb.2019	6.7
Women's dresses	0.125	-7.4	-0.010	—	L-Feb.2019	-4.8
Women's suits and separates ⁵	0.542	-7.9	-0.046	—	—	—
Women's underwear, nightwear, swimwear, and accessories ⁵	0.295	0.0	0.000	—	L-Apr.2019	0.2
Girls' apparel	0.172	4.1	0.007	—	L-Jul.2017	5.6
Footwear	0.657	0.0	0.000	—	L-Feb.2019	1.4
Men's footwear	0.211	0.5	0.001	—	L-Feb.2019	2.1
Boys' and girls' footwear	0.156	1.6	0.003	—	L-Mar.2019	3.6
Women's footwear	0.289	-1.1	-0.003	—	L-Jan.2019	-0.7
Infants' and toddlers' apparel	0.137	-2.6	-0.004	—	S-Aug.2017	-2.9
Jewelry and watches ⁹	0.244	4.1	0.010	—	L-Nov.2017	4.1
Watches ⁹	0.098	4.8	0.005	—	L-Oct.2018	7.3
Jewelry ⁹	0.147	3.7	0.006	—	L-Apr.2017	6.5
Transportation commodities less motor fuel ¹¹	6.542	0.9	0.060	—	L-Apr.2019	1.1
New vehicles	3.691	0.6	0.022	—	S-Feb.2019	0.3
New cars and trucks ^{5, 6}		0.6		—	S-Feb.2019	0.3
New cars ⁶		0.9		—	S-Feb.2019	0.6
New trucks ^{13, 6}		0.3		—	S-Feb.2019	0.2
Used cars and trucks	2.359	1.2	0.030	—	L-Jan.2019	1.6
Motor vehicle parts and equipment	0.379	1.9	0.007	—	—	—
Tires	0.224	2.0	0.005	—	L-Oct.2012	2.8
Vehicle accessories other than tires ⁵	0.155	1.7	0.003	—	S-Apr.2018	1.7
Vehicle parts and equipment other than tires ⁶		2.4		—	S-Mar.2019	1.9
Motor oil, coolant, and fluids ⁶		-1.7		—	S-Jul.2016	-2.5
Medical care commodities	1.687	-1.5	-0.025	—	S-Mar.1963	-1.5
Medicinal drugs ¹¹	1.630	-1.6	-0.027	—	S-EVER	—
Prescription drugs	1.294	-2.0	-0.027	—	S-Dec.1967	-2.1
Nonprescription drugs ¹¹	0.336	-0.2	-0.001	—	—	—
Medical equipment and supplies ¹¹	0.058	3.5	0.002	—	L-Apr.2019	3.8
Recreation commodities ¹¹	1.768	-0.9	-0.017	—	L-Jan.2019	-0.8
Video and audio products ¹¹	0.214	-9.6	-0.023	—	S-Mar.2019	-9.9
Televisions	0.088	-19.7	-0.022	—	S-Feb.2017	-20.1
Other video equipment ⁵	0.027	-2.2	-0.001	—	S-Nov.2018	-3.6
Audio equipment	0.044	1.4	0.001	—	L-Apr.2019	3.8
Recorded music and music subscriptions ⁵	0.047	-2.7	-0.001	—	L-Mar.2018	-2.0

See footnotes at end of table.

Table 7. Consumer Price Index for All Urban Consumers (CPI-U): U.S. city average, by expenditure category, June 2019, 12-month analysis table — Continued

[1982-84=100, unless otherwise noted]

Expenditure category	Relative importance May 2019	Twelve Month				
		Unadjusted percent change Jun. 2018- Jun. 2019	Unadjusted effect on All Items Jun. 2018- Jun. 2019 ¹	Standard error, median price change ^{2, 3}	Largest (L) or Smallest (S) unadjusted change since: ⁴	
					Date	Percent change
Pets and pet products.....	0.607	2.8	0.017	—	S-Apr.2019	2.6
Pet food ^{5, 6}		2.8		—	—	—
Purchase of pets, pet supplies, accessories ^{5, 6}		2.7		—	S-Nov.2018	2.0
Sporting goods.....	0.486	0.7	0.003	—	—	—
Sports vehicles including bicycles.....	0.278	1.9	0.005	—	L-Apr.2019	2.1
Sports equipment.....	0.201	-1.1	-0.002	—	S-Apr.2019	-2.7
Photographic equipment and supplies.....	0.032	2.7	0.001	—	L-Jun.2017	4.5
Film and photographic supplies ^{5, 6}						
Photographic equipment ^{5, 6}		2.5		—	L-Nov.2017	2.5
Recreational reading materials.....	0.115	3.6	0.004	—	S-Apr.2019	2.5
Newspapers and magazines ⁵	0.072	8.1	0.005	—	L-Jan.2019	10.5
Recreational books ⁵	0.043	-3.1	-0.001	—	S-Dec.2017	-3.2
Other recreational goods ⁵	0.313	-5.6	-0.019	—	L-Mar.2016	-5.6
Toys.....	0.242	-7.6	-0.020	—	L-Jan.2019	-7.6
Toys, games, hobbies and playground equipment ^{5, 6}		-4.7		—	L-Feb.2016	-4.2
Sewing machines, fabric and supplies ⁵	0.024	4.6	0.001	—	S-Jan.2019	2.3
Music instruments and accessories ⁵	0.036	2.8	0.001	—	S-Apr.2019	-0.3
Education and communication commodities ¹¹	0.513	-6.1	-0.033	—	S-EVER	—
Educational books and supplies.....	0.126	-2.1	-0.003	—	L-Apr.2019	-0.4
College textbooks ^{14, 6}		-2.5		—	L-Apr.2019	-0.4
Information technology commodities ¹¹	0.386	-7.3	-0.030	—	S-Nov.2016	-7.6
Computers, peripherals, and smart home assistant devices ⁷	0.297	-5.9	-0.018	—	S-Jul.2018	-6.4
Computer software and accessories ⁵	0.022	-4.1	-0.001	—	L-Mar.2019	-3.4
Telephone hardware, calculators, and other consumer information items ⁵	0.067	-14.0	-0.011	—	S-Apr.2019	-14.4
Alcoholic beverages.....	0.958	1.5	0.014	—	S-Apr.2019	1.2
Alcoholic beverages at home.....	0.597	1.7	0.010	—	S-Apr.2019	1.0
Beer, ale, and other malt beverages at home.....	0.265	1.7	0.004	—	S-Apr.2019	1.5
Distilled spirits at home.....	0.080	2.5	0.002	—	L-Mar.2019	2.7
Whiskey at home ⁶		1.1		—	S-Jan.2019	1.0
Distilled spirits, excluding whiskey, at home ⁶		2.4		—	L-Feb.2019	2.4
Wine at home.....	0.252	1.6	0.004	—	S-Apr.2019	0.1
Alcoholic beverages away from home.....	0.361	1.1	0.004	—	S-EVER	—
Beer, ale, and other malt beverages away from home ^{5, 6}		0.8		—	S-EVER	—
Wine away from home ^{5, 6}		2.1		—	S-Apr.2019	2.0
Distilled spirits away from home ^{5, 6}		0.2		—	S-Mar.2019	-0.7
Other goods ¹¹	1.548	1.2	0.019	—	S-Apr.2019	1.0
Tobacco and smoking products.....	0.664	4.6	0.030	—	—	—
Cigarettes ⁵	0.589	4.7	0.027	—	L-Apr.2019	4.8
Tobacco products other than cigarettes ⁵	0.060	3.5	0.002	—	S-Apr.2019	2.7
Personal care products.....	0.675	-0.6	-0.004	—	L-Jan.2019	-0.3
Hair, dental, shaving, and miscellaneous personal care products ⁵	0.377	0.8	0.003	—	S-Mar.2019	-0.2
Cosmetics, perfume, bath, nail preparations and implements.....	0.292	-2.3	-0.007	—	L-Mar.2019	-2.2
Miscellaneous personal goods ⁵	0.209	-3.3	-0.007	—	S-Apr.2019	-4.4
Stationery, stationery supplies, gift wrap ⁶		-1.3		—	L-Apr.2019	-1.0
Infants' equipment ^{3, 6}		-3.0		—	L-May 2018	-0.9
Services less energy services.....	59.511	2.8	1.642	—	L-Apr.2019	2.8
Shelter.....	33.208	3.5	1.147	—	L-Jul.2018	3.5
Rent of shelter ¹⁵	32.840	3.5	1.144	—	L-Apr.2019	3.5

See footnotes at end of table.

Table 7. Consumer Price Index for All Urban Consumers (CPI-U): U.S. city average, by expenditure category, June 2019, 12-month analysis table — Continued

[1982-84=100, unless otherwise noted]

Expenditure category	Relative importance May 2019	Twelve Month				
		Unadjusted percent change Jun. 2018- Jun. 2019	Unadjusted effect on All Items Jun. 2018- Jun. 2019 ¹	Standard error, median price change ^{2, 3}	Largest (L) or Smallest (S) unadjusted change since: ⁴	
					Date	Percent change
Rent of primary residence.....	7.901	3.9	0.301	—	L-Aug.2017	3.9
Lodging away from home ⁵	1.039	3.9	0.040	—	L-Apr.2019	4.1
Housing at school, excluding board ¹⁵	0.112	2.6	0.003	—	—	—
Other lodging away from home including hotels and motels.....	0.926	4.1	0.037	—	L-Apr.2019	4.3
Owners' equivalent rent of residences ¹⁵	23.900	3.4	0.803	—	L-Apr.2019	3.4
Owners' equivalent rent of primary residence ¹⁵ ..	22.568	3.4	0.760	—	—	—
Tenants' and household insurance ⁵	0.368	0.8	0.003	—	L-Apr.2019	1.4
Water and sewer and trash collection services ⁵	1.088	3.3	0.035	—	—	—
Water and sewerage maintenance.....	0.821	3.3	0.027	—	L-Jan.2019	3.3
Garbage and trash collection ¹³	0.266	3.4	0.009	—	S-Apr.2018	2.6
Household operations ⁵	0.875	5.2	0.045	—	L-Jan.2019	5.6
Domestic services ⁵	0.295	0.8	0.002	—	L-Apr.2019	3.5
Gardening and lawncare services ⁵	0.289	8.0	0.023	—	L-Nov.2018	8.7
Moving, storage, freight expense ⁵	0.103	5.7	0.006	—	L-Sep.2018	6.7
Repair of household items ⁵	0.112	8.8	0.009	—	L-Feb.2018	9.4
Medical care services.....	6.961	2.8	0.195	—	—	—
Professional services.....	3.220	0.9	0.030	—	L-Feb.2019	1.0
Physicians' services.....	1.710	0.4	0.008	—	L-Feb.2019	0.7
Dental services.....	0.783	1.9	0.015	—	L-Jan.2019	2.8
Eyeglasses and eye care ⁹	0.314	1.4	0.005	—	S-Apr.2019	0.6
Services by other medical professionals ⁹	0.412	0.5	0.002	—	—	—
Hospital and related services.....	2.583	0.8	0.022	—	S-EVER	—
Hospital services ¹⁶	2.302	0.5	0.012	—	S-EVER	—
Inpatient hospital services ^{16, 6}		0.5		—	S-EVER	—
Outpatient hospital services ^{9, 6}		0.1		—	S-EVER	—
Nursing homes and adult day services ¹⁶	0.193	3.5	0.007	—	L-Apr.2019	3.7
Care of invalids and elderly at home ⁸	0.087	4.0	0.003	—	—	—
Health insurance ⁸	1.158	13.7	0.143	—	L-Sep.2012	14.4
Transportation services.....	5.936	0.9	0.056	—	S-Jul.2007	0.8
Leased cars and trucks ¹⁴	0.619	-3.8	-0.025	—	S-Jun.2013	-4.1
Car and truck rental ⁵	0.109	2.1	0.002	—	L-Jan.2019	5.0
Motor vehicle maintenance and repair.....	1.125	3.5	0.038	—	L-Apr.2019	3.8
Motor vehicle body work.....	0.056	3.9	0.002	—	L-Jul.2009	4.4
Motor vehicle maintenance and servicing.....	0.636	4.2	0.026	—	—	—
Motor vehicle repair ⁵	0.369	2.2	0.008	—	—	—
Motor vehicle insurance.....	2.350	0.7	0.016	—	—	—
Motor vehicle fees ⁵	0.540	2.0	0.011	—	L-Apr.2019	2.0
State motor vehicle registration and license fees ⁵	0.277	0.8	0.002	—	S-Mar.2019	0.8
Parking and other fees ⁵	0.246	3.2	0.008	—	L-Apr.2019	3.2
Parking fees and tolls ^{5, 6}		3.2		—	—	—
Automobile service clubs ^{5, 6}				—	—	—
Public transportation.....	1.192	1.1	0.013	—	L-Apr.2016	1.1
Airline fares.....	0.739	1.5	0.011	—	L-Jun.2014	5.3
Other intercity transportation.....	0.168	-0.3	-0.001	—	S-Apr.2019	-0.6
Intercity bus fare ^{7, 6}				—	—	—
Intercity train fare ^{7, 6}				—	—	—
Ship fare ^{5, 6}		-1.5		—	S-Mar.2019	-2.1
Intracity transportation.....	0.278	1.1	0.003	—	L-Aug.2018	2.6
Intracity mass transit ^{11, 6}		1.7		—	S-Apr.2019	0.6
Recreation services ¹¹	3.844	1.7	0.064	—	S-Aug.2018	1.4
Video and audio services ¹¹	1.579	1.5	0.024	—	—	—
Cable and satellite television service ¹³	1.490	1.3	0.019	—	S-Nov.2018	1.1

See footnotes at end of table.

Table 7. Consumer Price Index for All Urban Consumers (CPI-U): U.S. city average, by expenditure category, June 2019, 12-month analysis table — Continued
 [1982-84=100, unless otherwise noted]

Expenditure category	Relative importance May 2019	Twelve Month				
		Unadjusted percent change Jun. 2018- Jun. 2019	Unadjusted effect on All Items Jun. 2018- Jun. 2019 ¹	Standard error, median price change ^{2, 3}	Largest (L) or Smallest (S) unadjusted change since: ⁴	
					Date	Percent change
Video discs and other media, including rental of video ⁵	0.089	5.2	0.005	—	L-Nov.2018	7.4
Video discs and other media ^{5, 6}		5.0		—	L-Nov.2018	9.8
Rental of video discs and other media ^{5, 6}		4.4		—	L-Jul.2015	4.5
Pet services including veterinary ⁵	0.417	3.5	0.014	—	—	—
Pet services ^{5, 6}		1.3		—	L-Apr.2019	3.5
Veterinarian services ^{5, 6}		4.2		—	—	—
Photographers and photo processing ⁵	0.037	-1.4	-0.001	—	S-Jul.2018	-1.8
Photographer fees ^{5, 6}		-3.5		—	S-Mar.2019	-4.1
Photo processing ^{5, 6}		-0.4		—	S-Dec.2018	-3.2
Other recreation services ⁵	1.809	1.5	0.026	—	S-Apr.2018	1.5
Club membership for shopping clubs, fraternal, or other organizations, or participant sports fees ⁵	0.664	1.6	0.010	—	S-Jun.2017	1.2
Admissions.....	0.655	0.4	0.003	—	S-Feb.2019	0.4
Admission to movies, theaters, and concerts ^{5, 6}		0.9		—	S-Feb.2019	0.6
Admission to sporting events ^{5, 6}		-0.8		—	S-Feb.2019	-3.4
Fees for lessons or instructions ⁹	0.218	3.5	0.008	—	L-Nov.2018	3.9
Education and communication services ¹¹	5.969	1.2	0.072	—	S-Feb.2019	1.1
Tuition, other school fees, and childcare.....	2.882	3.3	0.095	—	S-Feb.2019	3.0
College tuition and fees.....	1.596	3.4	0.054	—	S-Feb.2019	3.1
Elementary and high school tuition and fees.....	0.332	4.1	0.013	—	S-Jul.2018	3.9
Child care and nursery school ¹²	0.803	2.8	0.023	—	L-Jun.2017	2.9
Technical and business school tuition and fees ⁵	0.032	1.8	0.001	—	L-Dec.2018	2.1
Postage and delivery services ⁵	0.112	5.5	0.006	—	—	—
Postage.....	0.098	5.9	0.006	—	—	—
Delivery services ⁵	0.014	3.1	0.000	—	—	—
Telephone services ⁵	2.196	-1.7	-0.038	—	L-Apr.2019	-1.7
Wireless telephone services ⁵	1.625	-3.0	-0.050	—	L-Apr.2019	-2.9
Land-line telephone services ¹¹	0.570	2.2	0.013	—	L-Dec.2017	2.2
Internet services and electronic information providers ⁵	0.771	1.2	0.010	—	S-Dec.2018	1.1
Other personal services ¹¹	1.630	1.7	0.028	—	S-Apr.2015	1.7
Personal care services.....	0.624	1.8	0.011	—	S-Jan.2018	1.8
Haircuts and other personal care services ⁵	0.624	1.8	0.011	—	S-Jan.2018	1.8
Miscellaneous personal services.....	1.006	1.7	0.017	—	—	—
Legal services ⁹	0.301	0.5	0.001	—	L-Apr.2019	0.6
Funeral expenses ⁹	0.127	2.0	0.002	—	S-Apr.2019	2.0
Laundry and dry cleaning services ⁵	0.241	4.0	0.009	—	L-Mar.2009	4.0
Apparel services other than laundry and dry cleaning ⁵	0.029	4.9	0.001	—	L-Mar.2019	5.6
Financial services ⁹	0.237	0.3	0.001	—	S-Apr.2019	-0.9
Checking account and other bank services ^{5, 6}		0.2		—	—	—
Tax return preparation and other accounting fees ^{5, 6}		0.0		—	S-Apr.2019	-2.6
Special aggregate indexes						
All items less food.....	86.763	1.6	1.396	—	S-Feb.2019	1.5
All items less shelter.....	66.792	0.7	0.502	—	S-Feb.2019	0.6
All items less food and shelter.....	53.555	0.5	0.250	—	S-Feb.2019	0.3
All items less food, shelter, and energy.....	45.652	1.1	0.526	—	L-Apr.2019	1.1
All items less food, shelter, energy, and used cars and trucks.....	43.293	1.1	0.496	—	—	—
All items less medical care.....	91.352	1.6	1.479	—	S-Feb.2019	1.5

See footnotes at end of table.

Table 7. Consumer Price Index for All Urban Consumers (CPI-U): U.S. city average, by expenditure category, June 2019, 12-month analysis table — Continued
 [1982-84=100, unless otherwise noted]

Expenditure category	Relative importance May 2019	Twelve Month				
		Unadjusted percent change Jun. 2018- Jun. 2019	Unadjusted effect on All Items Jun. 2018- Jun. 2019 ¹	Standard error, median price change ^{2, 3}	Largest (L) or Smallest (S) unadjusted change since: ⁴	
					Date	Percent change
All items less energy.....	92.097	2.1	1.924	—	L-Feb.2019	2.1
Commodities.....	37.181	0.1	0.030	—	S-Feb.2019	-0.2
Commodities less food, energy, and used cars and trucks.....	16.990	0.0	0.001	—	L-Feb.2019	0.0
Commodities less food.....	23.945	-0.9	-0.222	—	S-Feb.2019	-1.4
Commodities less food and beverages.....	22.987	-1.0	-0.237	—	S-Feb.2019	-1.5
Services.....	62.819	2.6	1.619	—	L-Apr.2019	2.7
Services less rent of shelter ¹⁵	29.979	1.6	0.475	—	—	—
Services less medical care services.....	55.858	2.6	1.424	—	L-Apr.2019	2.7
Durables.....	9.828	0.5	0.051	—	L-May 2012	0.6
Nondurables.....	27.353	-0.1	-0.021	—	S-Feb.2019	-0.4
Nondurables less food.....	14.117	-1.9	-0.273	—	S-Feb.2019	-2.7
Nondurables less food and beverages.....	13.159	-2.1	-0.287	—	S-Feb.2019	-3.0
Nondurables less food, beverages, and apparel.....	10.162	-2.4	-0.247	—	S-Feb.2019	-3.8
Nondurables less food and apparel.....	11.120	-2.1	-0.233	—	S-Feb.2019	-3.3
Housing.....	42.000	3.0	1.248	—	L-Dec.2018	3.0
Education and communication ⁵	6.482	0.6	0.039	—	S-Feb.2019	0.6
Education ⁵	3.008	3.1	0.092	—	S-Feb.2019	2.9
Communication ⁵	3.474	-1.5	-0.053	—	S-Jan.2019	-1.7
Information and information processing ⁵	3.362	-1.7	-0.059	—	S-Jan.2019	-1.8
Information technology, hardware and services ¹⁷	1.166	-1.7	-0.021	—	S-Jul.2018	-1.7
Recreation ⁵	5.612	0.8	0.047	—	S-Nov.2018	0.6
Video and audio ⁵	1.793	0.0	0.001	—	S-Dec.2018	0.0
Pets, pet products and services ⁵	1.024	3.1	0.031	—	—	—
Photography ⁵	0.071	0.5	0.000	—	L-Sep.2017	0.5
Food and beverages.....	14.195	1.9	0.266	—	S-Apr.2019	1.7
Domestically produced farm food.....	6.016	0.7	0.044	—	S-Apr.2019	0.5
Other services.....	11.443	1.4	0.164	—	S-Apr.2018	1.2
Apparel less footwear.....	2.340	-1.7	-0.040	—	L-Feb.2019	-1.4
Fuels and utilities.....	4.579	0.1	0.003	—	S-Jul.2016	-0.2
Household energy.....	3.492	-0.9	-0.033	—	S-Jul.2016	-1.4
Medical care.....	8.648	2.0	0.169	—	S-Apr.2019	1.9
Transportation.....	16.889	-0.7	-0.128	—	S-Feb.2019	-1.5
Private transportation.....	15.697	-0.9	-0.141	—	S-Feb.2019	-1.5
New and used motor vehicles ⁵	6.891	0.4	0.030	—	—	—
Utilities and public transportation.....	9.274	0.1	0.007	—	L-Apr.2019	0.1
Household furnishings and operations.....	4.213	2.3	0.098	—	L-Dec.1995	2.5
Other goods and services.....	3.178	1.5	0.047	—	S-Apr.2019	1.4
Personal care.....	2.514	0.7	0.017	—	S-Apr.2019	0.6

¹ The 'effect' of an item category is a measure of that item's contribution to the All items price change. For example, if the Food index had an effect of 0.40, and the All items index rose 1.2 percent, then the increase in food prices contributed 0.40 / 1.2, or 33.3 percent, to that All items increase. Said another way, had food prices been unchanged for that year the change in the All items index would have been 1.2 percent minus 0.40, or 0.8 percent. Effects can be negative as well. For example, if the effect of food was a negative 0.1, and the All items index rose 0.5 percent, the All items index actually would have been 0.1 percent higher (or 0.6 percent) had food prices been unchanged. Since food prices fell while prices overall were rising, the contribution of food to the All items price change was negative (in this case, -0.1 / 0.5, or minus 20 percent).

² A statistic's margin of error is often expressed as its point estimate plus or minus two standard errors. For example, if a CPI category rose 2.6 percent, and its standard error was 0.25 percent, the margin of error on this item's 12-month percent change would be 2.6 percent, plus or minus 0.5 percent.

³ The 2018 geographic revision has prevented official variances for 2018 from being calculated. Experimental variances are available upon request.

⁴ If the current 12-month percent change is greater than the previous published 12-month percent change, then this column identifies the closest prior month with a 12-month percent change as (L)arge as or (L)arger than the current 12-month change. If the current 12-month percent change is smaller than the previous published 12-month percent change, the most recent month with a change as (S)mall or (S)maller than the current month change is identified. If the current and previous published 12-month percent changes are equal, a dash will appear. Standard numerical comparison is used. For example, 2.0% is greater than 0.6%, -4.4% is less than -2.0%, and -2.0% is less than 0.0%. Note that a (L)arger change can be a smaller decline, for example, a -0.2% change is larger than a -0.4% change, but still represents a decline in the price index. Likewise, (S)maller changes can be increases, for example, a 0.6% change is smaller than 0.8%, but still represents an increase in the price index. In this context, a -0.2% change is considered to be smaller than a 0.0% change.

⁵ Indexes on a December 1997=100 base.

⁶ Special indexes based on a substantially smaller sample. These series do not contribute to the all items index aggregation and therefore do not have a relative importance or effect.

⁷ Indexes on a December 2007=100 base.

⁸ Indexes on a December 2005=100 base.

⁹ Indexes on a December 1986=100 base.

¹⁰ Indexes on a December 1993=100 base.

¹¹ Indexes on a December 2009=100 base.

¹² Indexes on a December 1990=100 base.

¹³ Indexes on a December 1983=100 base.

¹⁴ Indexes on a December 2001=100 base.

¹⁵ Indexes on a December 1982=100 base.

¹⁶ Indexes on a December 1996=100 base.

¹⁷ Indexes on a December 1988=100 base.