



**Transmission of material in this release is embargoed until  
 8:30 a.m. (EST) Friday, January 5, 2018**

USDL-18-0024

Technical information:

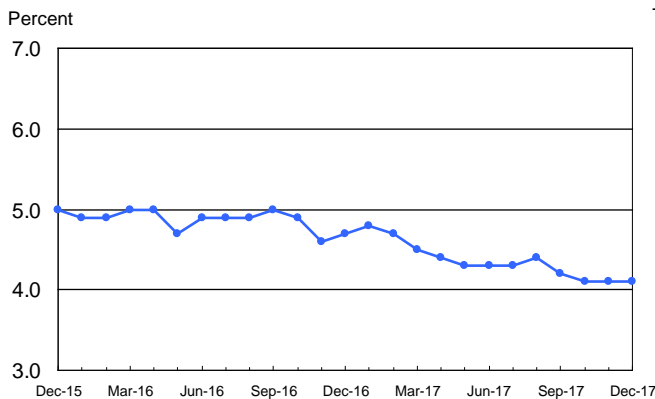
Household data: (202) 691-6378 • cpsinfo@bls.gov • www.bls.gov/cps  
 Establishment data: (202) 691-6555 • cesinfo@bls.gov • www.bls.gov/ces

Media contact: (202) 691-5902 • PressOffice@bls.gov

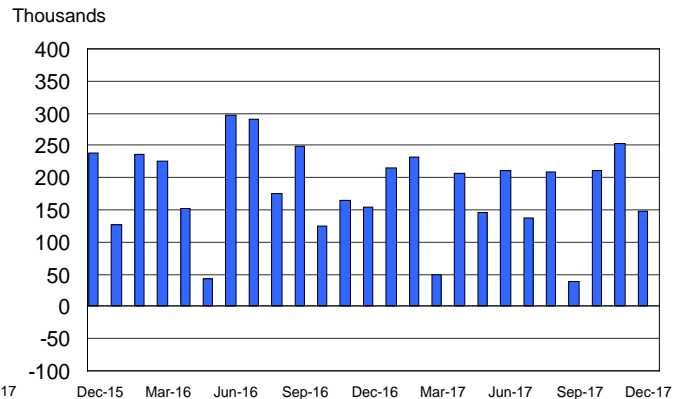
**THE EMPLOYMENT SITUATION — DECEMBER 2017**

Total **nonfarm payroll employment** increased by 148,000 in December, and the **unemployment rate** was unchanged at 4.1 percent, the U.S. Bureau of Labor Statistics reported today. Employment gains occurred in health care, construction, and manufacturing.

**Chart 1. Unemployment rate, seasonally adjusted, December 2015 – December 2017**



**Chart 2. Nonfarm payroll employment over-the-month change, seasonally adjusted, December 2015 – December 2017**



**Revision of Seasonally Adjusted Household Survey Data**

Seasonally adjusted household survey data have been revised using updated seasonal adjustment factors, a procedure done at the end of each calendar year. Seasonally adjusted estimates back to January 2013 were subject to revision. The unemployment rates for January 2017 through November 2017 (as originally published and as revised) appear in table A on page 6, along with additional information about the revisions.

## Household Survey Data

In December, the **unemployment rate** was 4.1 percent for the third consecutive month. The number of **unemployed persons**, at 6.6 million, was essentially unchanged over the month. Over the year, the unemployment rate and the number of unemployed persons were down by 0.6 percentage point and 926,000, respectively. (See table A-1.)

Among the **major worker groups**, the unemployment rate for teenagers declined to 13.6 percent in December, offsetting an increase in November. In December, the unemployment rates for adult men (3.8 percent), adult women (3.7 percent), Whites (3.7 percent), Blacks (6.8 percent), Asians (2.5 percent), and Hispanics (4.9 percent) showed little or no change. (See tables A-1, A-2, and A-3.)

Among the unemployed, the number of **new entrants** decreased by 116,000 in December. New entrants are unemployed persons who never previously worked. (See table A-11.)

The number of **long-term unemployed** (those jobless for 27 weeks or more) was little changed at 1.5 million in December and accounted for 22.9 percent of the unemployed. Over the year, the number of long-term unemployed declined by 354,000. (See table A-12.)

The **labor force participation rate**, at 62.7 percent, was unchanged over the month and over the year. The **employment-population ratio** was unchanged at 60.1 percent in December but was up by 0.3 percentage point over the year. (See table A-1.)

The number of persons employed **part time for economic reasons** (sometimes referred to as involuntary part-time workers) was essentially unchanged at 4.9 million in December but was down by 639,000 over the year. These individuals, who would have preferred full-time employment, were working part time because their hours had been cut back or because they were unable to find a full-time job. (See table A-8.)

In December, 1.6 million persons were **marginally attached to the labor force**, about unchanged from a year earlier. (The data are not seasonally adjusted.) These individuals were not in the labor force, wanted and were available for work, and had looked for a job sometime in the prior 12 months. They were not counted as unemployed because they had not searched for work in the 4 weeks preceding the survey. (See table A-16.)

Among the marginally attached, there were 474,000 **discouraged workers** in December, little changed from a year earlier. (The data are not seasonally adjusted.) Discouraged workers are persons not currently looking for work because they believe no jobs are available for them. The remaining 1.1 million persons marginally attached to the labor force in December had not searched for work for reasons such as school attendance or family responsibilities. (See table A-16.)

## Establishment Survey Data

Total **nonfarm payroll employment** rose by 148,000 in December. Job gains occurred in health care, construction, and manufacturing. In 2017, payroll employment growth totaled 2.1 million, compared with a gain of 2.2 million in 2016. (See table B-1.)

Employment in **health care** increased by 31,000 in December. Employment continued to trend up in ambulatory health care services (+15,000) and hospitals (+12,000). Health care added 300,000 jobs in 2017, compared with a gain of 379,000 jobs in 2016.

**Construction** added 30,000 jobs in December, with most of the increase among specialty trade contractors (+24,000). In 2017, construction employment increased by 210,000, compared with a gain of 155,000 in 2016.

In December, **manufacturing** employment rose by 25,000, largely reflecting a gain in durable goods industries (+21,000). Manufacturing added 196,000 jobs in 2017, following little net change in 2016 (-16,000).

Employment in **food services and drinking places** changed little in December (+25,000). Over the year, the industry added 249,000 jobs, about in line with an increase of 276,000 in 2016.

In December, employment changed little in **professional and business services** (+19,000). In 2017, the industry added an average of 44,000 jobs per month, in line with its average monthly gain in 2016.

Employment in **retail trade** was about unchanged in December (-20,000). Within the industry, employment in general merchandise stores declined by 27,000 over the month. Retail trade employment edged down in 2017 (-67,000), after increasing by 203,000 in 2016.

Employment in other major industries, including **mining, wholesale trade, transportation and warehousing, information, financial activities, and government**, changed little over the month.

The **average workweek for all employees** on private nonfarm payrolls was unchanged at 34.5 hours in December. In manufacturing, the workweek edged down by 0.1 hour to 40.8 hours, while overtime remained at 3.5 hours. The average workweek for **production and nonsupervisory employees** on private nonfarm payrolls was unchanged at 33.8 hours. (See tables B-2 and B-7.)

In December, **average hourly earnings for all employees** on private nonfarm payrolls rose by 9 cents to \$26.63. Over the year, average hourly earnings have risen by 65 cents, or 2.5 percent. Average hourly earnings of private-sector **production and nonsupervisory employees** increased by 7 cents to \$22.30 in December. (See tables B-3 and B-8.)

The change in total nonfarm payroll employment for October was revised down from +244,000 to +211,000, and the change for November was revised up from +228,000 to +252,000. With these revisions, employment gains in October and November combined were 9,000 less than previously reported. (Monthly revisions result from additional reports received from businesses and government agencies since the last published estimates and from the recalculation of seasonal factors.) After revisions, job gains have averaged 204,000 over the last 3 months.

---

**The Employment Situation for January is scheduled to be released on Friday, February 2, 2018, at 8:30 a.m. (EST).**

### **Upcoming Changes to the Household Survey**

Effective with the release of The Employment Situation for January 2018 on February 2, 2018, new population controls will be used in the household survey estimation process. These new controls reflect the annual updating of intercensal population estimates by the U.S. Census Bureau. In accordance with usual practice, historical data will not be revised to incorporate the new controls; consequently, household survey data for January 2018 will not be directly comparable with data for December 2017 or earlier periods. A table showing the effects of the new controls on the major labor force series will be included in the January 2018 release.

### **Upcoming Changes to Establishment Survey Data**

Effective with the release of The Employment Situation for January 2018 on February 2, 2018, the establishment survey will introduce revisions to nonfarm payroll employment, hours, and earnings data to reflect the annual benchmark adjustment for March 2017 and updated seasonal adjustment factors. Not seasonally adjusted data beginning with April 2016 and seasonally adjusted data beginning with January 2013 are subject to revision. Consistent with standard practice, some historical data may be subject to revisions resulting from issues identified during the benchmark process.

The establishment survey will also revise the basis for industry classification from the 2012 North American Industry Classification System (NAICS) to the 2017 NAICS. The conversion will result in minor revisions reflecting content changes within the mining and logging, retail trade, information, financial activities, and professional and business services sectors. Additionally, some smaller industries will be combined within the mining and logging, durable goods manufacturing, retail trade, and information sectors. Several industry titles and descriptions also will be updated.

Approximately 4 percent of employment will be reclassified into different industries as a result of the revision. Details of new, discontinued, and combined industries due to the 2017 NAICS update, as well as changes due to the annual benchmarking process are available at [www.bls.gov/web/empsit/cesnewseries.htm](http://www.bls.gov/web/empsit/cesnewseries.htm).

For more information on the 2017 NAICS update, visit [www.census.gov/eos/www/naics/](http://www.census.gov/eos/www/naics/).

### **Upcoming Changes to The Employment Situation News Release**

Effective with the release of January 2018 data on February 2, 2018, the U.S. Bureau of Labor Statistics will introduce a minor change to The Employment Situation news release table B-1. As a result of the update to the 2017 NAICS, the industry title for general merchandise stores will change to general merchandise stores, including warehouse clubs and supercenters. A listing of all series changes as a result of the 2017 NAICS update, including the industries published in news release table B-1, are available on the BLS website at [www.bls.gov/web/empsit/cesnewseries.htm](http://www.bls.gov/web/empsit/cesnewseries.htm).

## Revision of Seasonally Adjusted Household Survey Data

At the end of each calendar year, BLS routinely updates the seasonal adjustment factors for the labor force series derived from the Current Population Survey (CPS), or household survey. As a result of this process, seasonally adjusted data for January 2013 through November 2017 were subject to revision. (Not seasonally adjusted data were not subject to revision.)

Table A shows the unemployment rates for January 2017 through November 2017, as first published and as revised. The rates changed by one-tenth of a percentage point in 1 of the 11 months and were unchanged in the remaining 10 months. Revised seasonally adjusted data for other major labor force series beginning in December 2016 appear in table B.

An article describing the seasonal adjustment methodology for the household survey data and revised data for January 2017 through November 2017 is available at [www.bls.gov/web/empsit/cps-seas-adjustment-methodology.pdf](http://www.bls.gov/web/empsit/cps-seas-adjustment-methodology.pdf).

Historical data for the household series contained in the A tables of this release can be accessed at [www.bls.gov/cps/cpsatabs.htm](http://www.bls.gov/cps/cpsatabs.htm). Revised historical seasonally adjusted data are available at [www.bls.gov/cps/data.htm](http://www.bls.gov/cps/data.htm) and <https://download.bls.gov/pub/time.series/ln/>.

**Table A. Seasonally adjusted unemployment rates in 2017 and changes due to revision  
January - November 2017**

Month	As first published	As revised	Change
January .....	4.8	4.8	0.0
February .....	4.7	4.7	.0
March .....	4.5	4.5	.0
April .....	4.4	4.4	.0
May .....	4.3	4.3	.0
June .....	4.4	4.3	-.1
July .....	4.3	4.3	.0
August .....	4.4	4.4	.0
September .....	4.2	4.2	.0
October .....	4.1	4.1	.0
November .....	4.1	4.1	.0

**HOUSEHOLD DATA**

**Table B. Employment status of the civilian population by sex and age, seasonally adjusted**

[Numbers in thousands]

Employment status, sex, and age	2016	2017											
	Dec.	Jan.	Feb.	Mar.	Apr.	May	June	July	Aug.	Sept.	Oct.	Nov.	Dec.
<b>TOTAL</b>													
Civilian noninstitutional population <sup>1</sup> . . . . .	254,742	254,082	254,246	254,414	254,588	254,767	254,957	255,151	255,357	255,562	255,766	255,949	256,109
Civilian labor force . . . . .	159,736	159,718	159,997	160,235	160,181	159,729	160,214	160,467	160,598	161,082	160,371	160,533	160,597
Participation rate . . . . .	62.7	62.9	62.9	63.0	62.9	62.7	62.8	62.9	62.9	63.0	62.7	62.7	62.7
Employed . . . . .	152,233	152,076	152,511	153,064	153,161	152,892	153,250	153,511	153,471	154,324	153,846	153,917	154,021
Employment-population ratio . . . . .	59.8	59.9	60.0	60.2	60.2	60.0	60.1	60.2	60.1	60.4	60.2	60.1	60.1
Unemployed . . . . .	7,502	7,642	7,486	7,171	7,021	6,837	6,964	6,956	7,127	6,759	6,524	6,616	6,576
Unemployment rate . . . . .	4.7	4.8	4.7	4.5	4.4	4.3	4.3	4.3	4.4	4.2	4.1	4.1	4.1
<b>Men, 20 years and over</b>													
Civilian noninstitutional population <sup>1</sup> . . . . .	114,603	114,297	114,375	114,455	114,538	114,627	114,721	114,817	114,918	115,020	115,120	115,212	115,292
Civilian labor force . . . . .	81,996	82,051	82,054	82,007	82,054	81,915	82,022	82,128	82,297	82,561	82,366	82,375	82,548
Participation rate . . . . .	71.5	71.8	71.7	71.7	71.6	71.5	71.5	71.5	71.6	71.8	71.5	71.5	71.6
Employed . . . . .	78,396	78,448	78,515	78,548	78,839	78,794	78,753	78,863	78,887	79,393	79,248	79,324	79,431
Employment-population ratio . . . . .	68.4	68.6	68.6	68.6	68.8	68.7	68.6	68.7	68.6	69.0	68.8	68.9	68.9
Unemployed . . . . .	3,600	3,603	3,539	3,459	3,215	3,120	3,269	3,266	3,410	3,168	3,118	3,050	3,117
Unemployment rate . . . . .	4.4	4.4	4.3	4.2	3.9	3.8	4.0	4.0	4.1	3.8	3.8	3.7	3.8
<b>Women, 20 years and over</b>													
Civilian noninstitutional population <sup>1</sup> . . . . .	123,383	123,052	123,131	123,212	123,296	123,386	123,480	123,577	123,679	123,781	123,882	123,975	124,057
Civilian labor force . . . . .	71,898	71,720	72,050	72,233	72,144	71,979	72,187	72,499	72,406	72,497	72,187	72,302	72,293
Participation rate . . . . .	58.3	58.3	58.5	58.6	58.5	58.3	58.5	58.7	58.5	58.6	58.3	58.3	58.3
Employed . . . . .	68,835	68,572	68,978	69,337	69,218	69,087	69,289	69,586	69,502	69,692	69,576	69,665	69,614
Employment-population ratio . . . . .	55.8	55.7	56.0	56.3	56.1	56.0	56.1	56.3	56.2	56.3	56.2	56.2	56.1
Unemployed . . . . .	3,062	3,148	3,072	2,896	2,927	2,892	2,898	2,912	2,903	2,804	2,611	2,637	2,679
Unemployment rate . . . . .	4.3	4.4	4.3	4.0	4.1	4.0	4.0	4.0	4.0	3.9	3.6	3.6	3.7
<b>Both sexes, 16 to 19 years</b>													
Civilian noninstitutional population <sup>1</sup> . . . . .	16,756	16,734	16,740	16,747	16,754	16,754	16,756	16,757	16,759	16,761	16,763	16,762	16,760
Civilian labor force . . . . .	5,842	5,947	5,894	5,995	5,983	5,836	6,006	5,840	5,895	6,024	5,818	5,857	5,757
Participation rate . . . . .	34.9	35.5	35.2	35.8	35.7	34.8	35.8	34.9	35.2	35.9	34.7	34.9	34.4
Employed . . . . .	5,002	5,056	5,018	5,179	5,104	5,010	5,209	5,062	5,082	5,238	5,022	4,928	4,977
Employment-population ratio . . . . .	29.9	30.2	30.0	30.9	30.5	29.9	31.1	30.2	30.3	31.3	30.0	29.4	29.7
Unemployed . . . . .	840	891	876	816	879	825	797	778	813	786	796	929	780
Unemployment rate . . . . .	14.4	15.0	14.9	13.6	14.7	14.1	13.3	13.3	13.8	13.0	13.7	15.9	13.6

<sup>1</sup> The population figures are not adjusted for seasonal variation.

NOTE: Seasonally adjusted data have been revised to reflect updated seasonal adjustment factors.

# HOUSEHOLD DATA

## Summary table A. Household data, seasonally adjusted

[Numbers in thousands]

Category	Dec. 2016	Oct. 2017	Nov. 2017	Dec. 2017	Change from: Nov. 2017- Dec. 2017
<b>Employment status</b>					
Civilian noninstitutional population.....	254,742	255,766	255,949	256,109	160
Civilian labor force.....	159,736	160,371	160,533	160,597	64
Participation rate.....	62.7	62.7	62.7	62.7	0.0
Employed.....	152,233	153,846	153,917	154,021	104
Employment-population ratio.....	59.8	60.2	60.1	60.1	0.0
Unemployed.....	7,502	6,524	6,616	6,576	-40
Unemployment rate.....	4.7	4.1	4.1	4.1	0.0
Not in labor force.....	95,006	95,395	95,416	95,512	96
<b>Unemployment rates</b>					
Total, 16 years and over.....	4.7	4.1	4.1	4.1	0.0
Adult men (20 years and over).....	4.4	3.8	3.7	3.8	0.1
Adult women (20 years and over).....	4.3	3.6	3.6	3.7	0.1
Teenagers (16 to 19 years).....	14.4	13.7	15.9	13.6	-2.3
White.....	4.2	3.5	3.7	3.7	0.0
Black or African American.....	7.9	7.3	7.2	6.8	-0.4
Asian.....	2.8	3.0	3.0	2.5	-0.5
Hispanic or Latino ethnicity.....	5.9	4.8	4.8	4.9	0.1
Total, 25 years and over.....	3.9	3.3	3.3	3.4	0.1
Less than a high school diploma.....	7.6	6.1	5.2	6.3	1.1
High school graduates, no college.....	5.1	4.3	4.3	4.2	-0.1
Some college or associate degree.....	3.8	3.6	3.6	3.6	0.0
Bachelor's degree and higher.....	2.5	2.0	2.1	2.1	0.0
<b>Reason for unemployment</b>					
Job losers and persons who completed temporary jobs.....	3,627	3,214	3,149	3,254	105
Job leavers.....	896	731	739	715	-24
Reentrants.....	2,202	2,001	2,025	2,003	-22
New entrants.....	791	626	697	581	-116
<b>Duration of unemployment</b>					
Less than 5 weeks.....	2,359	2,128	2,253	2,235	-18
5 to 14 weeks.....	2,136	1,943	1,894	1,994	100
15 to 26 weeks.....	1,191	856	921	882	-39
27 weeks and over.....	1,869	1,645	1,593	1,515	-78
<b>Employed persons at work part time</b>					
Part time for economic reasons.....	5,554	4,880	4,851	4,915	64
Slack work or business conditions.....	3,387	2,960	2,995	3,097	102
Could only find part-time work.....	1,871	1,615	1,558	1,570	12
Part time for noneconomic reasons.....	21,253	20,897	21,022	21,122	100
<b>Persons not in the labor force (not seasonally adjusted)</b>					
Marginally attached to the labor force.....	1,684	1,535	1,481	1,623	-
Discouraged workers.....	426	524	469	474	-

- Over-the-month changes are not displayed for not seasonally adjusted data.

NOTE: Persons whose ethnicity is identified as Hispanic or Latino may be of any race. Detail for the seasonally adjusted data shown in this table will not necessarily add to totals because of the independent seasonal adjustment of the various series. Updated population controls are introduced annually with the release of January data.



**ESTABLISHMENT DATA**  
**Summary table B. Establishment data, seasonally adjusted**

Category	Dec. 2016	Oct. 2017	Nov. 2017 <sup>p</sup>	Dec. 2017 <sup>p</sup>
<b>EMPLOYMENT BY SELECTED INDUSTRY</b> (Over-the-month change, in thousands)				
Total nonfarm.....	155	211	252	148
Total private.....	150	222	239	146
Goods-producing.....	32	38	63	55
Mining and logging.....	2	0	5	0
Construction.....	12	15	27	30
Manufacturing.....	18	23	31	25
Durable goods <sup>1</sup> .....	13	13	26	21
Motor vehicles and parts.....	0.9	-0.5	1.5	1.3
Nondurable goods.....	5	10	5	4
Private service-providing.....	118	184	176	91
Wholesale trade.....	1.6	6.8	5.9	9.8
Retail trade.....	13.3	-20.1	26.4	-20.3
Transportation and warehousing.....	13.4	3.7	11.1	1.8
Utilities.....	0.2	0.0	-0.2	-0.9
Information.....	-6	-1	1	7
Financial activities.....	22	8	7	6
Professional and business services <sup>1</sup> .....	36	47	49	19
Temporary help services.....	-17.4	14.3	16.9	7.0
Education and health services <sup>1</sup> .....	50	17	50	28
Health care and social assistance.....	39.2	31.5	38.9	29.2
Leisure and hospitality.....	5	104	17	29
Other services.....	-17	18	9	12
Government.....	5	-11	13	2
<b>(3-month average change, in thousands)</b>				
Total nonfarm.....	148	152	167	204
Total private.....	153	152	170	202
<b>WOMEN AND PRODUCTION AND NONSUPERVISORY EMPLOYEES</b> AS A PERCENT OF ALL EMPLOYEES <sup>2</sup>				
Total nonfarm women employees.....	49.6	49.5	49.5	49.5
Total private women employees.....	48.2	48.1	48.1	48.1
Total private production and nonsupervisory employees.....	82.4	82.4	82.4	82.4
<b>HOURS AND EARNINGS</b> ALL EMPLOYEES				
<b>Total private</b>				
Average weekly hours.....	34.4	34.4	34.5	34.5
Average hourly earnings.....	\$25.98	\$26.51	\$26.54	\$26.63
Average weekly earnings.....	\$893.71	\$911.94	\$915.63	\$918.74
Index of aggregate weekly hours (2007=100) <sup>3</sup> .....	106.2	107.6	108.1	108.3
Over-the-month percent change.....	0.4	0.2	0.5	0.2
Index of aggregate weekly payrolls (2007=100) <sup>4</sup> .....	131.9	136.4	137.2	137.8
Over-the-month percent change.....	0.7	0.1	0.6	0.4
<b>DIFFUSION INDEX</b> (Over 1-month span) <sup>5</sup>				
Total private (261 industries).....	60.0	62.6	68.0	64.2
Manufacturing (78 industries).....	53.8	66.7	64.7	65.4

<sup>1</sup> Includes other industries, not shown separately.

<sup>2</sup> Data relate to production employees in mining and logging and manufacturing, construction employees in construction, and nonsupervisory employees in the service-providing industries.

<sup>3</sup> The indexes of aggregate weekly hours are calculated by dividing the current month's estimates of aggregate hours by the corresponding annual average aggregate hours.

<sup>4</sup> The indexes of aggregate weekly payrolls are calculated by dividing the current month's estimates of aggregate weekly payrolls by the corresponding annual average aggregate weekly payrolls.

<sup>5</sup> Figures are the percent of industries with employment increasing plus one-half of the industries with unchanged employment, where 50 percent indicates an equal balance between industries with increasing and decreasing employment.

p Preliminary

NOTE: Data have been revised to reflect March 2016 benchmark levels and updated seasonal adjustment factors.

# Frequently Asked Questions about Employment and Unemployment Estimates

## 1. Why are there two monthly measures of employment?

The household survey and establishment survey both produce sample-based estimates of employment, and both have strengths and limitations. The establishment survey employment series has a smaller margin of error on the measurement of month-to-month change than the household survey because of its much larger sample size. An over-the-month employment change of about 100,000 is statistically significant in the establishment survey, while the threshold for a statistically significant change in the household survey is about 500,000. However, the household survey has a more expansive scope than the establishment survey because it includes self-employed workers whose businesses are unincorporated, unpaid family workers, agricultural workers, and private household workers, who are excluded by the establishment survey. The household survey also provides estimates of employment for demographic groups. For more information on the differences between the two surveys, please visit [https://www.bls.gov/web/empsit/ces\\_cps\\_trends.htm](https://www.bls.gov/web/empsit/ces_cps_trends.htm).

## 2. Are undocumented immigrants counted in the surveys?

It is likely that both surveys include at least some undocumented immigrants. However, neither the establishment nor the household survey is designed to identify the legal status of workers. Therefore, it is not possible to determine how many are counted in either survey. The establishment survey does not collect data on the legal status of workers. The household survey does include questions which identify the foreign and native born, but it does not include questions about the legal status of the foreign born. Data on the foreign and native born are published each month in table A-7 of The Employment Situation news release.

## 3. Why does the establishment survey have revisions?

The establishment survey revises published estimates to improve its data series by incorporating additional information that was not available at the time of the initial publication of the estimates. The establishment survey revises its initial monthly estimates twice, in the immediately succeeding 2 months, to incorporate additional sample receipts from respondents in the survey and recalculated seasonal adjustment factors. For more information on the monthly revisions, please visit <https://www.bls.gov/ces/cesrevinfo.htm>.

On an annual basis, the establishment survey incorporates a benchmark revision that re-anchors estimates to nearly complete employment counts available from unemployment insurance tax records. The benchmark helps to control for sampling and modeling errors in the estimates. For more information on the annual benchmark revision, please visit <https://www.bls.gov/web/empsit/cesbmart.htm>.

## 4. Does the establishment survey sample include small firms?

Yes; about 40 percent of the establishment survey sample is comprised of business establishments with fewer than 20 employees. The establishment survey sample is designed to maximize the reliability of the statewide total nonfarm employment estimate; firms from all states, size classes, and industries are appropriately sampled to achieve that goal.

## **5. Does the establishment survey account for employment from new businesses?**

Yes; monthly establishment survey estimates include an adjustment to account for the net employment change generated by business births and deaths. The adjustment comes from an econometric model that forecasts the monthly net jobs impact of business births and deaths based on the actual past values of the net impact that can be observed with a lag from the Quarterly Census of Employment and Wages. The establishment survey uses modeling rather than sampling for this purpose because the survey is not immediately able to bring new businesses into the sample. There is an unavoidable lag between the birth of a new firm and its appearance on the sampling frame and availability for selection. BLS adds new businesses to the survey twice a year.

## **6. Is the count of unemployed persons limited to just those people receiving unemployment insurance benefits?**

No; the estimate of unemployment is based on a monthly sample survey of households. All persons who are without jobs and are actively seeking and available to work are included among the unemployed. (People on temporary layoff are included even if they do not actively seek work.) There is no requirement or question relating to unemployment insurance benefits in the monthly survey.

## **7. Does the official unemployment rate exclude people who want a job but are not currently looking for work?**

Yes; however, there are separate estimates of persons outside the labor force who want a job, including those who are not currently looking because they believe no jobs are available (discouraged workers). In addition, alternative measures of labor underutilization (some of which include discouraged workers and other groups not officially counted as unemployed) are published each month in table A-15 of The Employment Situation news release. For more information about these alternative measures, please visit <https://www.bls.gov/cps/lfcharacteristics.htm#altmeasures>.

## **8. How can unusually severe weather affect employment and hours estimates?**

In the establishment survey, the reference period is the pay period that includes the 12th of the month. Unusually severe weather is more likely to have an impact on average weekly hours than on employment. Average weekly hours are estimated for paid time during the pay period, including pay for holidays, sick leave, or other time off. The impact of severe weather on hours estimates typically, but not always, results in a reduction in average weekly hours. For example, some employees may be off work for part of the pay period and not receive pay for the time missed, while some workers, such as those dealing with cleanup or repair, may work extra hours.

Typically, it is not possible to precisely quantify the effect of extreme weather on payroll employment estimates. In order for severe weather conditions to reduce employment estimates, employees have to be off work without pay for the entire pay period. Employees who receive pay for any part of the pay period, even 1 hour, are counted in the payroll employment figures. For more information on how often employees are paid, please visit <https://www.bls.gov/opub/btn/volume-3/how-frequently-do-private-businesses-pay-workers.htm>.

In the household survey, the reference period is generally the calendar week that includes the 12th of the month. Persons who miss the entire week's work for weather-related events are counted as employed whether or not they are paid for the time off. The household survey collects data on the number of persons who had a job but were not at work due to bad weather. It also provides a measure of the number of persons who usually work full time but had reduced hours due to bad weather. Current and historical data are available on the household survey's most requested statistics page, please visit <https://data.bls.gov/cgi-bin/surveymost?ln>.

# Technical Note

This news release presents statistics from two major surveys, the Current Population Survey (CPS; household survey) and the Current Employment Statistics survey (CES; establishment survey). The household survey provides information on the labor force, employment, and unemployment that appears in the "A" tables, marked HOUSEHOLD DATA. It is a sample survey of about 60,000 eligible households conducted by the U.S. Census Bureau for the U.S. Bureau of Labor Statistics (BLS).

The establishment survey provides information on employment, hours, and earnings of employees on nonfarm payrolls; the data appear in the "B" tables, marked ESTABLISHMENT DATA. BLS collects these data each month from the payroll records of a sample of nonagricultural business establishments. Each month the CES program surveys about 147,000 businesses and government agencies, representing approximately 634,000 individual worksites, in order to provide detailed industry data on employment, hours, and earnings of workers on nonfarm payrolls. The active sample includes approximately one-third of all nonfarm payroll employees.

For both surveys, the data for a given month relate to a particular week or pay period. In the household survey, the reference period is generally the calendar week that contains the 12th day of the month. In the establishment survey, the reference period is the pay period including the 12th, which may or may not correspond directly to the calendar week.

## Coverage, definitions, and differences between surveys

**Household survey.** The sample is selected to reflect the entire civilian noninstitutional population. Based on responses to a series of questions on work and job search activities, each person 16 years and over in a sample household is classified as employed, unemployed, or not in the labor force.

People are classified as *employed* if they did any work at all as paid employees during the reference week; worked in their own business, profession, or on their own farm; or worked without pay at least 15 hours in a family business or farm. People are also counted as employed if they were temporarily absent from their jobs because of illness, bad weather, vacation, labor-management disputes, or personal reasons.

People are classified as *unemployed* if they meet all of the following criteria: they had no employment during the reference week; they were available for work at that time; and they made specific efforts to find employment sometime during the 4-week period ending with the reference week. Persons laid off from a job and expecting recall need not be looking for work to be counted as unemployed. The unemployment data derived from the household survey in no way depend upon the eligibility for or receipt of unemployment insurance benefits.

The *civilian labor force* is the sum of employed and unemployed persons. Those persons not classified as employed or unemployed are *not in the labor force*. The

*unemployment rate* is the number unemployed as a percent of the labor force. The *labor force participation rate* is the labor force as a percent of the population, and the *employment-population ratio* is the employed as a percent of the population. Additional information about the household survey can be found at <https://www.bls.gov/cps/documentation.htm>.

**Establishment survey.** The sample establishments are drawn from private nonfarm businesses such as factories, offices, and stores, as well as from federal, state, and local government entities. *Employees on nonfarm payrolls* are those who received pay for any part of the reference pay period, including persons on paid leave. Persons are counted in each job they hold. *Hours and earnings* data are produced for the private sector for all employees and for production and nonsupervisory employees. *Production and nonsupervisory* employees are defined as production and related employees in manufacturing and mining and logging, construction workers in construction, and non-supervisory employees in private service-providing industries.

Industries are classified on the basis of an establishment's principal activity in accordance with the 2012 version of the North American Industry Classification System. Additional information about the establishment survey can be found at <https://www.bls.gov/ces/>.

**Differences in employment estimates.** The numerous conceptual and methodological differences between the household and establishment surveys result in important distinctions in the employment estimates derived from the surveys. Among these are:

- The household survey includes agricultural workers, self-employed workers whose businesses are unincorporated, unpaid family workers, and private household workers among the employed. These groups are excluded from the establishment survey.
- The household survey includes people on unpaid leave among the employed. The establishment survey does not.
- The household survey is limited to workers 16 years of age and older. The establishment survey is not limited by age.
- The household survey has no duplication of individuals, because individuals are counted only once, even if they hold more than one job. In the establishment survey, employees working at more than one job and thus appearing on more than one payroll are counted separately for each appearance.

## Seasonal adjustment

Over the course of a year, the size of the nation's labor force and the levels of employment and unemployment undergo regularly occurring fluctuations. These events may result from seasonal changes in weather, major holidays, and the opening and closing of schools. The effect of such seasonal variation can be very large.

Because these seasonal events follow a more or less regular pattern each year, their influence on the level of a series can be tempered by adjusting for regular seasonal variation. These adjustments make nonseasonal developments, such as declines in employment or increases in the participation of women in the labor force, easier to spot. For example, in the household survey, the large number of youth entering the labor force each June is likely to obscure any other changes that have taken place relative to May, making it difficult to determine if the level of economic activity has risen or declined. Similarly, in the establishment survey, payroll employment in education declines by about 20 percent at the end of the spring term and later rises with the start of the fall term, obscuring the underlying employment trends in the industry. Because seasonal employment changes at the end and beginning of the school year can be estimated, the statistics can be adjusted to make underlying employment patterns more discernable. The seasonally adjusted figures provide a more useful tool with which to analyze changes in month-to-month economic activity.

Many seasonally adjusted series are independently adjusted in both the household and establishment surveys. However, the adjusted series for many major estimates, such as total payroll employment, employment in most major sectors, total employment, and unemployment are computed by aggregating independently adjusted component series. For example, total unemployment is derived by summing the adjusted series for four major age-sex components; this differs from the unemployment estimate that would be obtained by directly adjusting the total or by combining the duration, reasons, or more detailed age categories.

For both the household and establishment surveys, a concurrent seasonal adjustment methodology is used in which new seasonal factors are calculated each month using all relevant data, up to and including the data for the current month. In the household survey, new seasonal factors are used to adjust only the current month's data. In the establishment survey, however, new seasonal factors are used each month to adjust the three most recent monthly estimates. The prior 2 months are routinely revised to incorporate additional sample reports and recalculated seasonal adjustment factors. In both surveys, 5-year revisions to historical data are made once a year.

## Reliability of the estimates

Statistics based on the household and establishment surveys are subject to both sampling and nonsampling error. When a sample, rather than the entire population, is

surveyed, there is a chance that the sample estimates may differ from the true population values they represent. The component of this difference that occurs because samples differ by chance is known as *sampling error*, and its variability is measured by the standard error of the estimate. There is about a 90-percent chance, or level of confidence, that an estimate based on a sample will differ by no more than 1.6 standard errors from the true population value because of sampling error. BLS analyses are generally conducted at the 90-percent level of confidence.

For example, the confidence interval for the monthly change in total nonfarm employment from the establishment survey is on the order of plus or minus 120,000. Suppose the estimate of nonfarm employment increases by 50,000 from one month to the next. The 90-percent confidence interval on the monthly change would range from -70,000 to +170,000 (50,000 +/- 120,000). These figures do not mean that the sample results are off by these magnitudes, but rather that there is about a 90-percent chance that the true over-the-month change lies within this interval. Since this range includes values of less than zero, we could not say with confidence that nonfarm employment had, in fact, increased that month. If, however, the reported nonfarm employment rise was 250,000, then all of the values within the 90-percent confidence interval would be greater than zero. In this case, it is likely (at least a 90-percent chance) that nonfarm employment had, in fact, risen that month. At an unemployment rate of around 6.0 percent, the 90-percent confidence interval for the monthly change in unemployment as measured by the household survey is about +/- 300,000, and for the monthly change in the unemployment rate it is about +/- 0.2 percentage point.

In general, estimates involving many individuals or establishments have lower standard errors (relative to the size of the estimate) than estimates which are based on a small number of observations. The precision of estimates also is improved when the data are cumulated over time, such as for quarterly and annual averages.

The household and establishment surveys are also affected by *nonsampling error*, which can occur for many reasons, including the failure to sample a segment of the population, inability to obtain information for all respondents in the sample, inability or unwillingness of respondents to provide correct information on a timely basis, mistakes made by respondents, and errors made in the collection or processing of the data.

For example, in the establishment survey, estimates for the most recent 2 months are based on incomplete returns; for this reason, these estimates are labeled preliminary in the tables. It is only after two successive revisions to a monthly estimate, when nearly all sample reports have been received, that the estimate is considered final.

Another major source of nonsampling error in the establishment survey is the inability to capture, on a timely basis, employment generated by new firms. To correct for this systematic underestimation of employment growth, an estimation procedure with two components is used to account for business births. The first component excludes employment losses from business deaths from sample-based

estimation in order to offset the missing employment gains from business births. This is incorporated into the sample-based estimation procedure by simply not reflecting sample units going out of business, but imputing to them the same employment trend as the other firms in the sample. This procedure accounts for most of the net birth/death employment.

The second component is an ARIMA time series model designed to estimate the residual net birth/death employment not accounted for by the imputation. The historical time series used to create and test the ARIMA model was derived from the unemployment insurance universe micro-level database, and reflects the actual residual net of births and deaths over the past 5 years.

The sample-based estimates from the establishment survey are adjusted once a year (on a lagged basis) to

universe counts of payroll employment obtained from administrative records of the unemployment insurance program. The difference between the March sample-based employment estimates and the March universe counts is known as a benchmark revision, and serves as a rough proxy for total survey error. The new benchmarks also incorporate changes in the classification of industries. Over the past decade, absolute benchmark revisions for total nonfarm employment have averaged 0.3 percent, with a range from -0.7 percent to 0.6 percent.

#### **Other information**

Information in this release will be made available to sensory impaired individuals upon request. Voice phone: (202) 691-5200; Federal Relay Service: (800) 877-8339.

# HOUSEHOLD DATA

## Table A-1. Employment status of the civilian population by sex and age

[Numbers in thousands]

Employment status, sex, and age	Not seasonally adjusted			Seasonally adjusted <sup>1</sup>					
	Dec. 2016	Nov. 2017	Dec. 2017	Dec. 2016	Aug. 2017	Sept. 2017	Oct. 2017	Nov. 2017	Dec. 2017
<b>TOTAL</b>									
Civilian noninstitutional population.....	254,742	255,949	256,109	254,742	255,357	255,562	255,766	255,949	256,109
Civilian labor force.....	158,968	160,466	159,880	159,736	160,598	161,082	160,371	160,533	160,597
Participation rate.....	62.4	62.7	62.4	62.7	62.9	63.0	62.7	62.7	62.7
Employed.....	151,798	154,180	153,602	152,233	153,471	154,324	153,846	153,917	154,021
Employment-population ratio.....	59.6	60.2	60.0	59.8	60.1	60.4	60.2	60.1	60.1
Unemployed.....	7,170	6,286	6,278	7,502	7,127	6,759	6,524	6,616	6,576
Unemployment rate.....	4.5	3.9	3.9	4.7	4.4	4.2	4.1	4.1	4.1
Not in labor force.....	95,774	95,483	96,230	95,006	94,759	94,480	95,395	95,416	95,512
Persons who currently want a job.....	5,449	4,877	5,071	5,674	5,809	5,626	5,232	5,265	5,308
<b>Men, 16 years and over</b>									
Civilian noninstitutional population.....	123,099	123,707	123,786	123,099	123,413	123,516	123,617	123,707	123,786
Civilian labor force.....	84,463	84,943	84,831	85,001	85,177	85,519	85,247	85,221	85,354
Participation rate.....	68.6	68.7	68.5	69.1	69.0	69.2	69.0	68.9	69.0
Employed.....	80,368	81,535	81,300	80,897	81,342	81,902	81,667	81,666	81,821
Employment-population ratio.....	65.3	65.9	65.7	65.7	65.9	66.3	66.1	66.0	66.1
Unemployed.....	4,095	3,408	3,531	4,104	3,836	3,617	3,580	3,555	3,533
Unemployment rate.....	4.8	4.0	4.2	4.8	4.5	4.2	4.2	4.2	4.1
Not in labor force.....	38,636	38,764	38,955	38,097	38,236	37,996	38,370	38,486	38,432
<b>Men, 20 years and over</b>									
Civilian noninstitutional population.....	114,603	115,212	115,292	114,603	114,918	115,020	115,120	115,212	115,292
Civilian labor force.....	81,640	82,257	82,193	81,996	82,297	82,561	82,366	82,375	82,548
Participation rate.....	71.2	71.4	71.3	71.5	71.6	71.8	71.5	71.5	71.6
Employed.....	77,984	79,349	79,025	78,396	78,887	79,393	79,248	79,324	79,431
Employment-population ratio.....	68.0	68.9	68.5	68.4	68.6	69.0	68.8	68.9	68.9
Unemployed.....	3,656	2,909	3,168	3,600	3,410	3,168	3,118	3,050	3,117
Unemployment rate.....	4.5	3.5	3.9	4.4	4.1	3.8	3.8	3.7	3.8
Not in labor force.....	32,963	32,954	33,099	32,607	32,621	32,459	32,755	32,837	32,745
<b>Women, 16 years and over</b>									
Civilian noninstitutional population.....	131,643	132,242	132,323	131,643	131,943	132,047	132,149	132,242	132,323
Civilian labor force.....	74,505	75,523	75,048	74,735	75,420	75,563	75,124	75,312	75,243
Participation rate.....	56.6	57.1	56.7	56.8	57.2	57.2	56.8	57.0	56.9
Employed.....	71,430	72,645	72,301	71,336	72,129	72,422	72,179	72,251	72,200
Employment-population ratio.....	54.3	54.9	54.6	54.2	54.7	54.8	54.6	54.6	54.6
Unemployed.....	3,075	2,877	2,747	3,398	3,291	3,142	2,945	3,061	3,043
Unemployment rate.....	4.1	3.8	3.7	4.5	4.4	4.2	3.9	4.1	4.0
Not in labor force.....	57,138	56,719	57,275	56,909	56,523	56,484	57,026	56,930	57,080
<b>Women, 20 years and over</b>									
Civilian noninstitutional population.....	123,383	123,975	124,057	123,383	123,679	123,781	123,882	123,975	124,057
Civilian labor force.....	71,794	72,673	72,237	71,898	72,406	72,497	72,187	72,302	72,293
Participation rate.....	58.2	58.6	58.2	58.3	58.5	58.6	58.3	58.3	58.3
Employed.....	68,984	70,163	69,775	68,835	69,502	69,692	69,576	69,665	69,614
Employment-population ratio.....	55.9	56.6	56.2	55.8	56.2	56.3	56.2	56.2	56.1
Unemployed.....	2,810	2,509	2,462	3,062	2,903	2,804	2,611	2,637	2,679
Unemployment rate.....	3.9	3.5	3.4	4.3	4.0	3.9	3.6	3.6	3.7
Not in labor force.....	51,589	51,302	51,820	51,485	51,273	51,284	51,696	51,673	51,764
<b>Both sexes, 16 to 19 years</b>									
Civilian noninstitutional population.....	16,756	16,762	16,760	16,756	16,759	16,761	16,763	16,762	16,760
Civilian labor force.....	5,534	5,536	5,449	5,842	5,895	6,024	5,818	5,857	5,757
Participation rate.....	33.0	33.0	32.5	34.9	35.2	35.9	34.7	34.9	34.4
Employed.....	4,831	4,668	4,801	5,002	5,082	5,238	5,022	4,928	4,977
Employment-population ratio.....	28.8	27.8	28.6	29.9	30.3	31.3	30.0	29.4	29.7
Unemployed.....	704	868	648	840	813	786	796	929	780
Unemployment rate.....	12.7	15.7	11.9	14.4	13.8	13.0	13.7	15.9	13.6
Not in labor force.....	11,221	11,226	11,311	10,914	10,864	10,737	10,945	10,906	11,003

<sup>1</sup> The population figures are not adjusted for seasonal variation; therefore, identical numbers appear in the unadjusted and seasonally adjusted columns.

NOTE: Updated population controls are introduced annually with the release of January data.

**HOUSEHOLD DATA**

**Table A-2. Employment status of the civilian population by race, sex, and age**

[Numbers in thousands]

Employment status, race, sex, and age	Not seasonally adjusted			Seasonally adjusted <sup>1</sup>					
	Dec. 2016	Nov. 2017	Dec. 2017	Dec. 2016	Aug. 2017	Sept. 2017	Oct. 2017	Nov. 2017	Dec. 2017
<b>WHITE</b>									
Civilian noninstitutional population.....	198,845	199,386	199,458	198,845	199,082	199,191	199,298	199,386	199,458
Civilian labor force.....	124,081	124,966	124,594	124,688	125,030	125,397	124,757	125,110	125,200
Participation rate.....	62.4	62.7	62.5	62.7	62.8	63.0	62.6	62.7	62.8
Employed.....	118,992	120,749	120,148	119,401	120,242	120,754	120,400	120,514	120,551
Employment-population ratio.....	59.8	60.6	60.2	60.0	60.4	60.6	60.4	60.4	60.4
Unemployed.....	5,090	4,217	4,446	5,287	4,788	4,643	4,356	4,596	4,649
Unemployment rate.....	4.1	3.4	3.6	4.2	3.8	3.7	3.5	3.7	3.7
Not in labor force.....	74,764	74,420	74,864	74,157	74,053	73,794	74,541	74,276	74,258
<b>Men, 20 years and over</b>									
Civilian labor force.....	64,895	65,297	65,263	65,133	65,298	65,348	65,244	65,394	65,511
Participation rate.....	71.4	71.6	71.6	71.7	71.7	71.8	71.6	71.7	71.8
Employed.....	62,194	63,327	62,964	62,534	62,997	63,159	63,155	63,282	63,307
Employment-population ratio.....	68.4	69.5	69.0	68.8	69.2	69.4	69.3	69.4	69.4
Unemployed.....	2,700	1,971	2,299	2,599	2,301	2,189	2,090	2,112	2,204
Unemployment rate.....	4.2	3.0	3.5	4.0	3.5	3.3	3.2	3.2	3.4
<b>Women, 20 years and over</b>									
Civilian labor force.....	54,856	55,365	55,061	54,965	55,231	55,447	55,014	55,147	55,161
Participation rate.....	57.4	57.7	57.4	57.5	57.7	57.9	57.4	57.5	57.5
Employed.....	52,966	53,729	53,356	52,892	53,276	53,538	53,298	53,342	53,275
Employment-population ratio.....	55.4	56.0	55.6	55.3	55.7	55.9	55.6	55.6	55.5
Unemployed.....	1,890	1,635	1,705	2,072	1,955	1,909	1,715	1,805	1,886
Unemployment rate.....	3.4	3.0	3.1	3.8	3.5	3.4	3.1	3.3	3.4
<b>Both sexes, 16 to 19 years</b>									
Civilian labor force.....	4,330	4,304	4,270	4,591	4,500	4,602	4,499	4,569	4,528
Participation rate.....	35.1	34.9	34.6	37.2	36.5	37.3	36.5	37.0	36.7
Employed.....	3,832	3,693	3,828	3,975	3,968	4,057	3,947	3,891	3,970
Employment-population ratio.....	31.0	29.9	31.0	32.2	32.2	32.9	32.0	31.5	32.2
Unemployed.....	499	611	442	616	532	545	552	678	559
Unemployment rate.....	11.5	14.2	10.4	13.4	11.8	11.8	12.3	14.8	12.3
<b>BLACK OR AFRICAN AMERICAN</b>									
Civilian noninstitutional population.....	32,105	32,404	32,436	32,105	32,296	32,333	32,370	32,404	32,436
Civilian labor force.....	19,779	20,218	20,050	19,890	20,090	20,254	20,134	20,175	20,153
Participation rate.....	61.6	62.4	61.8	62.0	62.2	62.6	62.2	62.3	62.1
Employed.....	18,307	18,779	18,791	18,310	18,571	18,838	18,654	18,718	18,790
Employment-population ratio.....	57.0	58.0	57.9	57.0	57.5	58.3	57.6	57.8	57.9
Unemployed.....	1,472	1,439	1,260	1,579	1,519	1,416	1,479	1,457	1,362
Unemployment rate.....	7.4	7.1	6.3	7.9	7.6	7.0	7.3	7.2	6.8
Not in labor force.....	12,327	12,186	12,385	12,216	12,206	12,079	12,236	12,230	12,283
<b>Men, 20 years and over</b>									
Civilian labor force.....	9,023	9,210	9,128	9,072	9,213	9,294	9,218	9,225	9,178
Participation rate.....	67.4	68.0	67.3	67.8	68.3	68.8	68.2	68.1	67.7
Employed.....	8,337	8,552	8,537	8,378	8,500	8,668	8,539	8,552	8,576
Employment-population ratio.....	62.3	63.1	63.0	62.6	63.0	64.2	63.1	63.1	63.2
Unemployed.....	686	658	591	695	713	626	679	673	601
Unemployment rate.....	7.6	7.1	6.5	7.7	7.7	6.7	7.4	7.3	6.6
<b>Women, 20 years and over</b>									
Civilian labor force.....	10,088	10,310	10,236	10,114	10,127	10,166	10,204	10,219	10,252
Participation rate.....	62.2	63.1	62.5	62.4	62.1	62.3	62.5	62.5	62.6
Employed.....	9,459	9,703	9,707	9,411	9,487	9,550	9,560	9,622	9,657
Employment-population ratio.....	58.4	59.3	59.3	58.1	58.2	58.5	58.5	58.8	59.0
Unemployed.....	629	607	529	703	639	616	644	597	595
Unemployment rate.....	6.2	5.9	5.2	7.0	6.3	6.1	6.3	5.8	5.8
<b>Both sexes, 16 to 19 years</b>									
Civilian labor force.....	668	698	686	703	751	794	712	731	723
Participation rate.....	26.5	27.8	27.4	27.9	29.9	31.6	28.4	29.1	28.8
Employed.....	511	524	547	522	584	619	555	544	557
Employment-population ratio.....	20.3	20.9	21.8	20.7	23.3	24.7	22.1	21.7	22.2
Unemployed.....	157	174	140	181	167	174	157	187	166
Unemployment rate.....	23.5	25.0	20.3	25.8	22.2	22.0	22.0	25.5	22.9

See footnotes at end of table.



**HOUSEHOLD DATA**

**Table A-2. Employment status of the civilian population by race, sex, and age — Continued**

[Numbers in thousands]

Employment status, race, sex, and age	Not seasonally adjusted			Seasonally adjusted <sup>1</sup>					
	Dec. 2016	Nov. 2017	Dec. 2017	Dec. 2016	Aug. 2017	Sept. 2017	Oct. 2017	Nov. 2017	Dec. 2017
<b>ASIAN</b>									
Civilian noninstitutional population.....	15,433	15,370	15,610	15,433	15,341	15,483	15,466	15,370	15,610
Civilian labor force.....	9,681	9,633	9,779	9,685	9,876	9,985	9,864	9,699	9,782
Participation rate.....	62.7	62.7	62.6	62.8	64.4	64.5	63.8	63.1	62.7
Employed.....	9,428	9,343	9,546	9,418	9,489	9,626	9,565	9,407	9,536
Employment-population ratio.....	61.1	60.8	61.2	61.0	61.9	62.2	61.8	61.2	61.1
Unemployed.....	253	290	233	267	388	359	299	292	246
Unemployment rate.....	2.6	3.0	2.4	2.8	3.9	3.6	3.0	3.0	2.5
Not in labor force.....	5,752	5,737	5,831	5,749	5,464	5,498	5,602	5,671	5,829

<sup>1</sup> The population figures are not adjusted for seasonal variation; therefore, identical numbers appear in the unadjusted and seasonally adjusted columns.

NOTE: Estimates for the above race groups will not sum to totals shown in table A-1 because data are not presented for all races. Updated population controls are introduced annually with the release of January data.

**HOUSEHOLD DATA**

**Table A-3. Employment status of the Hispanic or Latino population by sex and age**

[Numbers in thousands]

Employment status, sex, and age	Not seasonally adjusted			Seasonally adjusted <sup>1</sup>					
	Dec. 2016	Nov. 2017	Dec. 2017	Dec. 2016	Aug. 2017	Sept. 2017	Oct. 2017	Nov. 2017	Dec. 2017
<b>HISPANIC OR LATINO ETHNICITY</b>									
Civilian noninstitutional population.....	41,190	41,751	41,831	41,190	41,492	41,579	41,665	41,751	41,831
Civilian labor force.....	27,032	27,479	27,429	27,098	27,325	27,609	27,319	27,389	27,498
Participation rate.....	65.6	65.8	65.6	65.8	65.9	66.4	65.6	65.6	65.7
Employed.....	25,450	26,196	26,077	25,513	25,925	26,209	25,999	26,088	26,141
Employment-population ratio.....	61.8	62.7	62.3	61.9	62.5	63.0	62.4	62.5	62.5
Unemployed.....	1,582	1,283	1,352	1,586	1,400	1,400	1,321	1,301	1,356
Unemployment rate.....	5.9	4.7	4.9	5.9	5.1	5.1	4.8	4.8	4.9
Not in labor force.....	14,158	14,272	14,402	14,092	14,167	13,970	14,346	14,361	14,334
<b>Men, 20 years and over</b>									
Civilian labor force.....	14,832	14,999	15,090	14,825	15,012	15,110	14,959	14,969	15,084
Participation rate.....	79.9	79.8	80.1	79.8	80.4	80.7	79.7	79.6	80.1
Employed.....	14,059	14,432	14,457	14,109	14,303	14,502	14,380	14,400	14,507
Employment-population ratio.....	75.7	76.8	76.7	76.0	76.6	77.5	76.7	76.6	77.0
Unemployed.....	773	567	634	716	709	608	579	569	577
Unemployment rate.....	5.2	3.8	4.2	4.8	4.7	4.0	3.9	3.8	3.8
<b>Women, 20 years and over</b>									
Civilian labor force.....	11,062	11,314	11,165	11,084	11,098	11,249	11,146	11,222	11,189
Participation rate.....	58.8	59.3	58.4	58.9	58.5	59.2	58.5	58.8	58.5
Employed.....	10,435	10,769	10,604	10,427	10,576	10,637	10,601	10,676	10,598
Employment-population ratio.....	55.5	56.4	55.5	55.4	55.8	56.0	55.7	56.0	55.4
Unemployed.....	627	545	561	657	522	612	546	546	591
Unemployment rate.....	5.7	4.8	5.0	5.9	4.7	5.4	4.9	4.9	5.3
<b>Both sexes, 16 to 19 years</b>									
Civilian labor force.....	1,138	1,166	1,174	1,189	1,215	1,250	1,214	1,198	1,225
Participation rate.....	29.8	30.1	30.3	31.2	31.5	32.4	31.4	30.9	31.6
Employed.....	956	995	1,017	976	1,046	1,070	1,018	1,012	1,037
Employment-population ratio.....	25.1	25.7	26.2	25.6	27.1	27.7	26.3	26.2	26.8
Unemployed.....	182	171	158	213	169	180	196	185	188
Unemployment rate.....	16.0	14.7	13.4	17.9	13.9	14.4	16.1	15.5	15.4

<sup>1</sup> The population figures are not adjusted for seasonal variation; therefore, identical numbers appear in the unadjusted and seasonally adjusted columns.

NOTE: Persons whose ethnicity is identified as Hispanic or Latino may be of any race. Updated population controls are introduced annually with the release of January data.

**HOUSEHOLD DATA**

**Table A-4. Employment status of the civilian population 25 years and over by educational attainment**

[Numbers in thousands]

Educational attainment	Not seasonally adjusted			Seasonally adjusted					
	Dec. 2016	Nov. 2017	Dec. 2017	Dec. 2016	Aug. 2017	Sept. 2017	Oct. 2017	Nov. 2017	Dec. 2017
<b>Less than a high school diploma</b>									
Civilian labor force.....	10,461	10,298	10,148	10,476	10,553	10,552	10,328	10,167	10,148
Participation rate.....	44.9	45.6	44.8	44.9	46.1	46.2	46.2	45.1	44.8
Employed.....	9,621	9,779	9,455	9,682	9,903	9,846	9,699	9,639	9,507
Employment-population ratio.....	41.3	43.4	41.8	41.5	43.3	43.1	43.4	42.7	42.0
Unemployed.....	840	518	693	795	649	706	629	528	641
Unemployment rate.....	8.0	5.0	6.8	7.6	6.2	6.7	6.1	5.2	6.3
<b>High school graduates, no college<sup>1</sup></b>									
Civilian labor force.....	35,535	36,102	35,760	35,683	35,908	35,916	35,572	36,014	35,927
Participation rate.....	57.5	57.7	57.5	57.8	57.6	57.4	56.9	57.5	57.8
Employed.....	33,710	34,598	34,245	33,874	34,116	34,377	34,050	34,463	34,425
Employment-population ratio.....	54.6	55.3	55.1	54.8	54.7	55.0	54.4	55.1	55.4
Unemployed.....	1,825	1,504	1,515	1,808	1,792	1,539	1,522	1,551	1,503
Unemployment rate.....	5.1	4.2	4.2	5.1	5.0	4.3	4.3	4.3	4.2
<b>Some college or associate degree</b>									
Civilian labor force.....	38,188	38,075	37,897	38,216	37,247	37,540	37,761	37,955	37,906
Participation rate.....	66.0	66.4	66.2	66.1	65.6	65.9	65.8	66.2	66.2
Employed.....	36,795	36,747	36,590	36,751	35,845	36,189	36,385	36,579	36,534
Employment-population ratio.....	63.6	64.1	63.9	63.6	63.1	63.5	63.4	63.8	63.8
Unemployed.....	1,394	1,328	1,307	1,465	1,402	1,351	1,376	1,376	1,372
Unemployment rate.....	3.6	3.5	3.4	3.8	3.8	3.6	3.6	3.6	3.6
<b>Bachelor's degree and higher<sup>2</sup></b>									
Civilian labor force.....	54,095	55,498	55,824	54,128	55,576	55,621	55,612	55,501	55,852
Participation rate.....	73.6	73.6	73.4	73.7	73.9	74.1	73.8	73.6	73.5
Employed.....	52,843	54,424	54,701	52,789	54,247	54,378	54,477	54,348	54,653
Employment-population ratio.....	71.9	72.2	72.0	71.9	72.1	72.5	72.3	72.1	71.9
Unemployed.....	1,252	1,074	1,123	1,339	1,329	1,242	1,135	1,153	1,200
Unemployment rate.....	2.3	1.9	2.0	2.5	2.4	2.2	2.0	2.1	2.1

<sup>1</sup> Includes persons with a high school diploma or equivalent.

<sup>2</sup> Includes persons with bachelor's, master's, professional, and doctoral degrees.

NOTE: Updated population controls are introduced annually with the release of January data.

**HOUSEHOLD DATA**

**Table A-5. Employment status of the civilian population 18 years and over by veteran status, period of service, and sex, not seasonally adjusted**

[Numbers in thousands]

Employment status, veteran status, and period of service	Total		Men		Women	
	Dec. 2016	Dec. 2017	Dec. 2016	Dec. 2017	Dec. 2016	Dec. 2017
<b>VETERANS, 18 years and over</b>						
Civilian noninstitutional population.....	20,757	19,389	18,735	17,533	2,022	1,856
Civilian labor force.....	10,434	9,521	9,210	8,405	1,224	1,115
Participation rate.....	50.3	49.1	49.2	47.9	60.5	60.1
Employed.....	10,009	9,159	8,822	8,084	1,187	1,075
Employment-population ratio.....	48.2	47.2	47.1	46.1	58.7	57.9
Unemployed.....	424	362	388	321	36	41
Unemployment rate.....	4.1	3.8	4.2	3.8	3.0	3.6
Not in labor force.....	10,323	9,868	9,525	9,128	798	741
<b>Gulf War-era II veterans</b>						
Civilian noninstitutional population.....	4,038	4,164	3,334	3,469	704	695
Civilian labor force.....	3,341	3,383	2,836	2,897	505	486
Participation rate.....	82.7	81.2	85.1	83.5	71.7	69.9
Employed.....	3,152	3,270	2,669	2,800	483	470
Employment-population ratio.....	78.1	78.5	80.0	80.7	68.6	67.6
Unemployed.....	189	113	167	97	22	16
Unemployment rate.....	5.7	3.3	5.9	3.4	4.3	3.3
Not in labor force.....	697	781	498	572	199	209
<b>Gulf War-era I veterans</b>						
Civilian noninstitutional population.....	3,309	2,981	2,799	2,501	510	480
Civilian labor force.....	2,613	2,284	2,252	1,952	361	332
Participation rate.....	79.0	76.6	80.5	78.1	70.9	69.1
Employed.....	2,540	2,204	2,182	1,885	358	319
Employment-population ratio.....	76.8	73.9	78.0	75.4	70.2	66.4
Unemployed.....	74	80	70	67	4	13
Unemployment rate.....	2.8	3.5	3.1	3.4	1.0	4.0
Not in labor force.....	695	697	547	548	149	148
<b>World War II, Korean War, and Vietnam-era veterans</b>						
Civilian noninstitutional population.....	8,308	7,839	8,010	7,572	298	267
Civilian labor force.....	1,875	1,638	1,812	1,573	62	65
Participation rate.....	22.6	20.9	22.6	20.8	20.9	24.3
Employed.....	1,796	1,577	1,740	1,512	56	65
Employment-population ratio.....	21.6	20.1	21.7	20.0	18.8	24.3
Unemployed.....	79	61	73	61	6	0
Unemployment rate.....	4.2	3.7	4.0	3.9	-	-
Not in labor force.....	6,433	6,201	6,198	5,999	236	202
<b>Veterans of other service periods</b>						
Civilian noninstitutional population.....	5,102	4,405	4,592	3,991	510	414
Civilian labor force.....	2,605	2,216	2,310	1,983	295	233
Participation rate.....	51.1	50.3	50.3	49.7	57.9	56.3
Employed.....	2,522	2,109	2,232	1,887	290	222
Employment-population ratio.....	49.4	47.9	48.6	47.3	56.9	53.5
Unemployed.....	83	107	78	96	5	11
Unemployment rate.....	3.2	4.8	3.4	4.8	1.7	4.9
Not in labor force.....	2,497	2,189	2,282	2,008	215	181
<b>NONVETERANS, 18 years and over</b>						
Civilian noninstitutional population.....	224,879	227,397	99,823	101,486	125,055	125,911
Civilian labor force.....	146,581	148,288	74,321	75,509	72,260	72,779
Participation rate.....	65.2	65.2	74.5	74.4	57.8	57.8
Employed.....	140,128	142,639	70,793	72,437	69,335	70,203
Employment-population ratio.....	62.3	62.7	70.9	71.4	55.4	55.8
Unemployed.....	6,454	5,649	3,528	3,073	2,925	2,576
Unemployment rate.....	4.4	3.8	4.7	4.1	4.0	3.5
Not in labor force.....	78,297	79,109	25,502	25,976	52,795	53,133

NOTE: Veterans served on active duty in the U.S. Armed Forces and were not on active duty at the time of the survey. Nonveterans never served on active duty in the U.S. Armed Forces. Veterans could have served anywhere in the world during these periods of service: Gulf War era II (September 2001-present), Gulf War era I (August 1990-August 2001), Vietnam era (August 1964-April 1975), Korean War (July 1950-January 1955), World War II (December 1941-December 1946), and other service periods (all other time periods). Veterans who served in more than one wartime period are classified only in the most recent one. Veterans who served during one of the selected wartime periods and another period are classified only in the wartime period. Dash indicates no data or data that do not meet publication criteria (values not shown where base is less than 75,000).

**HOUSEHOLD DATA**

**Table A-6. Employment status of the civilian population by sex, age, and disability status, not seasonally adjusted**

[Numbers in thousands]

Employment status, sex, and age	Persons with a disability		Persons with no disability	
	Dec. 2016	Dec. 2017	Dec. 2016	Dec. 2017
<b>TOTAL, 16 years and over</b>				
Civilian noninstitutional population.....	30,131	29,780	224,611	226,329
Civilian labor force.....	6,054	6,211	152,914	153,668
Participation rate.....	20.1	20.9	68.1	67.9
Employed.....	5,509	5,690	146,289	147,912
Employment-population ratio.....	18.3	19.1	65.1	65.4
Unemployed.....	545	522	6,625	5,757
Unemployment rate.....	9.0	8.4	4.3	3.7
Not in labor force.....	24,077	23,569	71,697	72,661
<b>Men, 16 to 64 years</b>				
Civilian labor force.....	2,650	2,777	76,792	76,818
Participation rate.....	34.6	37.5	82.0	81.8
Employed.....	2,379	2,509	73,182	73,748
Employment-population ratio.....	31.1	33.9	78.2	78.6
Unemployed.....	271	268	3,610	3,071
Unemployment rate.....	10.2	9.7	4.7	4.0
Not in labor force.....	5,001	4,622	16,836	17,037
<b>Women, 16 to 64 years</b>				
Civilian labor force.....	2,347	2,327	67,993	68,380
Participation rate.....	28.9	30.2	70.4	70.6
Employed.....	2,152	2,134	65,264	65,960
Employment-population ratio.....	26.5	27.7	67.6	68.1
Unemployed.....	195	193	2,729	2,421
Unemployment rate.....	8.3	8.3	4.0	3.5
Not in labor force.....	5,763	5,367	28,522	28,461
<b>Both sexes, 65 years and over</b>				
Civilian labor force.....	1,057	1,107	8,128	8,470
Participation rate.....	7.4	7.5	23.6	23.8
Employed.....	978	1,047	7,842	8,204
Employment-population ratio.....	6.8	7.1	22.8	23.0
Unemployed.....	79	60	286	265
Unemployment rate.....	7.4	5.4	3.5	3.1
Not in labor force.....	13,312	13,580	26,340	27,163

NOTE: A person with a disability has at least one of the following conditions: is deaf or has serious difficulty hearing; is blind or has serious difficulty seeing even when wearing glasses; has serious difficulty concentrating, remembering, or making decisions because of a physical, mental, or emotional condition; has serious difficulty walking or climbing stairs; has difficulty dressing or bathing; or has difficulty doing errands alone such as visiting a doctor's office or shopping because of a physical, mental, or emotional condition. Updated population controls are introduced annually with the release of January data.

**HOUSEHOLD DATA**

**Table A-7. Employment status of the civilian population by nativity and sex, not seasonally adjusted**

[Numbers in thousands]

Employment status and nativity	Total		Men		Women	
	Dec. 2016	Dec. 2017	Dec. 2016	Dec. 2017	Dec. 2016	Dec. 2017
<b>Foreign born, 16 years and over</b>						
Civilian noninstitutional population.....	41,623	41,546	20,196	19,966	21,427	21,579
Civilian labor force.....	27,062	27,143	15,560	15,612	11,501	11,531
Participation rate.....	65.0	65.3	77.0	78.2	53.7	53.4
Employed.....	25,881	26,091	14,945	15,058	10,935	11,033
Employment-population ratio.....	62.2	62.8	74.0	75.4	51.0	51.1
Unemployed.....	1,181	1,052	615	554	566	498
Unemployment rate.....	4.4	3.9	4.0	3.5	4.9	4.3
Not in labor force.....	14,561	14,403	4,636	4,354	9,925	10,048
<b>Native born, 16 years and over</b>						
Civilian noninstitutional population.....	213,119	214,563	102,903	103,820	110,217	110,744
Civilian labor force.....	131,906	132,736	68,903	69,219	63,004	63,517
Participation rate.....	61.9	61.9	67.0	66.7	57.2	57.4
Employed.....	125,917	127,510	65,423	66,242	60,495	61,268
Employment-population ratio.....	59.1	59.4	63.6	63.8	54.9	55.3
Unemployed.....	5,989	5,226	3,480	2,977	2,509	2,249
Unemployment rate.....	4.5	3.9	5.1	4.3	4.0	3.5
Not in labor force.....	81,213	81,827	34,000	34,600	47,213	47,227

NOTE: The foreign born are those residing in the United States who were not U.S. citizens at birth. That is, they were born outside the United States or one of its outlying areas such as Puerto Rico or Guam, to parents neither of whom was a U.S. citizen. The native born are persons who were born in the United States or one of its outlying areas such as Puerto Rico or Guam or who were born abroad of at least one parent who was a U.S. citizen. Updated population controls are introduced annually with the release of January data.

**HOUSEHOLD DATA**

**Table A-8. Employed persons by class of worker and part-time status**

[In thousands]

Category	Not seasonally adjusted			Seasonally adjusted					
	Dec. 2016	Nov. 2017	Dec. 2017	Dec. 2016	Aug. 2017	Sept. 2017	Oct. 2017	Nov. 2017	Dec. 2017
<b>CLASS OF WORKER</b>									
Agriculture and related industries.....	2,180	2,451	2,368	2,349	2,368	2,311	2,471	2,510	2,552
Wage and salary workers <sup>1</sup> .....	1,366	1,666	1,590	1,472	1,596	1,554	1,707	1,697	1,717
Self-employed workers, unincorporated.....	797	754	743	851	725	745	749	791	793
Unpaid family workers.....	18	30	35	-	-	-	-	-	-
Nonagricultural industries.....	149,617	151,729	151,233	149,854	151,175	151,942	151,334	151,453	151,478
Wage and salary workers <sup>1</sup> .....	140,753	142,653	142,295	140,922	142,371	142,959	142,294	142,472	142,505
Government.....	21,029	20,950	20,789	20,887	21,037	20,908	20,755	20,717	20,642
Private industries.....	119,724	121,702	121,506	120,071	121,394	122,055	121,578	121,779	121,900
Private households.....	680	608	687	-	-	-	-	-	-
Other industries.....	119,044	121,094	120,819	119,377	120,695	121,423	121,012	121,140	121,206
Self-employed workers, unincorporated.....	8,800	9,030	8,881	8,921	8,645	8,861	8,956	8,922	8,970
Unpaid family workers.....	64	46	57	-	-	-	-	-	-
<b>PERSONS AT WORK PART TIME<sup>2</sup></b>									
<b>  All industries</b>									
Part time for economic reasons <sup>3</sup> .....	5,707	4,642	5,060	5,554	5,209	5,148	4,880	4,851	4,915
Slack work or business conditions.....	3,478	2,872	3,172	3,387	3,232	3,098	2,960	2,995	3,097
Could only find part-time work.....	1,828	1,497	1,529	1,871	1,631	1,725	1,615	1,558	1,570
Part time for noneconomic reasons <sup>4</sup> .....	21,711	22,123	21,631	21,253	21,468	20,951	20,897	21,022	21,122
<b>    Nonagricultural industries</b>									
Part time for economic reasons <sup>3</sup> .....	5,561	4,554	4,992	5,415	5,125	5,048	4,799	4,759	4,856
Slack work or business conditions.....	3,362	2,819	3,132	3,267	3,196	3,054	2,944	2,952	3,049
Could only find part-time work.....	1,824	1,486	1,528	1,860	1,622	1,702	1,600	1,552	1,563
Part time for noneconomic reasons <sup>4</sup> .....	21,335	21,744	21,226	20,860	21,133	20,619	20,552	20,645	20,703

<sup>1</sup> Includes self-employed workers whose businesses are incorporated.

<sup>2</sup> Refers to those who worked 1 to 34 hours during the survey reference week and excludes employed persons who were absent from their jobs for the entire week.

<sup>3</sup> Refers to those who worked 1 to 34 hours during the reference week for an economic reason such as slack work or unfavorable business conditions, inability to find full-time work, or seasonal declines in demand.

<sup>4</sup> Refers to persons who usually work part time for noneconomic reasons such as childcare problems, family or personal obligations, school or training, retirement or Social Security limits on earnings, and other reasons. This excludes persons who usually work full time but worked only 1 to 34 hours during the reference week for reasons such as vacations, holidays, illness, and bad weather.

- Data not available.

NOTE: Detail for the seasonally adjusted data shown in this table will not necessarily add to totals because of the independent seasonal adjustment of the various series. Updated population controls are introduced annually with the release of January data.

# HOUSEHOLD DATA

## Table A-9. Selected employment indicators

[Numbers in thousands]

Characteristic	Not seasonally adjusted			Seasonally adjusted					
	Dec. 2016	Nov. 2017	Dec. 2017	Dec. 2016	Aug. 2017	Sept. 2017	Oct. 2017	Nov. 2017	Dec. 2017
<b>AGE AND SEX</b>									
Total, 16 years and over.....	151,798	154,180	153,602	152,233	153,471	154,324	153,846	153,917	154,021
16 to 19 years.....	4,831	4,668	4,801	5,002	5,082	5,238	5,022	4,928	4,977
16 to 17 years.....	1,661	1,794	1,803	1,750	1,923	1,972	1,932	1,929	1,907
18 to 19 years.....	3,170	2,874	2,998	3,253	3,150	3,206	3,070	2,996	3,075
20 years and over.....	146,967	149,512	148,801	147,231	148,389	149,085	148,824	148,989	149,045
20 to 24 years.....	13,999	13,963	13,809	14,120	14,227	14,211	14,183	13,982	13,936
25 years and over.....	132,968	135,549	134,991	133,071	134,086	134,845	134,716	135,009	135,083
25 to 54 years.....	98,417	99,823	99,547	98,427	98,584	99,235	99,227	99,407	99,535
25 to 34 years.....	34,219	34,821	34,614	34,204	34,317	34,652	34,666	34,692	34,606
35 to 44 years.....	31,564	32,316	32,302	31,573	31,830	32,045	32,094	32,146	32,304
45 to 54 years.....	32,634	32,685	32,631	32,650	32,437	32,538	32,468	32,568	32,625
55 years and over.....	34,551	35,726	35,444	34,644	35,502	35,610	35,489	35,602	35,548
Men, 16 years and over.....	80,368	81,535	81,300	80,897	81,342	81,902	81,667	81,666	81,821
16 to 19 years.....	2,384	2,186	2,275	2,501	2,455	2,509	2,419	2,342	2,391
16 to 17 years.....	753	811	779	810	884	899	884	884	848
18 to 19 years.....	1,631	1,375	1,495	1,686	1,564	1,600	1,528	1,443	1,540
20 years and over.....	77,984	79,349	79,025	78,396	78,887	79,393	79,248	79,324	79,431
20 to 24 years.....	7,152	7,157	7,093	7,259	7,357	7,313	7,280	7,210	7,203
25 years and over.....	70,832	72,192	71,933	71,122	71,506	72,028	72,016	72,102	72,226
25 to 54 years.....	52,529	53,178	53,163	52,685	52,574	52,980	53,082	53,084	53,308
25 to 34 years.....	18,328	18,650	18,559	18,379	18,438	18,605	18,617	18,617	18,612
35 to 44 years.....	16,988	17,347	17,397	17,040	17,085	17,262	17,320	17,300	17,450
45 to 54 years.....	17,213	17,181	17,206	17,266	17,051	17,114	17,145	17,167	17,246
55 years and over.....	18,303	19,014	18,770	18,437	18,933	19,048	18,934	19,018	18,918
Women, 16 years and over.....	71,430	72,645	72,301	71,336	72,129	72,422	72,179	72,251	72,200
16 to 19 years.....	2,446	2,482	2,526	2,501	2,627	2,729	2,603	2,586	2,586
16 to 17 years.....	908	983	1,024	941	1,039	1,073	1,048	1,044	1,059
18 to 19 years.....	1,538	1,499	1,502	1,567	1,586	1,606	1,541	1,552	1,535
20 years and over.....	68,984	70,163	69,775	68,835	69,502	69,692	69,576	69,665	69,614
20 to 24 years.....	6,847	6,806	6,717	6,861	6,870	6,898	6,903	6,772	6,733
25 years and over.....	62,136	63,357	63,058	61,949	62,580	62,817	62,700	62,906	62,857
25 to 54 years.....	45,889	46,645	46,385	45,742	46,011	46,255	46,146	46,322	46,227
25 to 34 years.....	15,891	16,171	16,055	15,825	15,880	16,047	16,049	16,074	15,994
35 to 44 years.....	14,577	14,969	14,905	14,533	14,745	14,784	14,774	14,846	14,853
45 to 54 years.....	15,421	15,504	15,425	15,384	15,386	15,425	15,323	15,402	15,380
55 years and over.....	16,248	16,712	16,674	16,208	16,569	16,562	16,555	16,584	16,630
<b>MARITAL STATUS</b>									
Married men, spouse present <sup>1</sup> .....	45,254	45,581	45,284	45,389	45,319	45,594	45,776	45,621	45,439
Married women, spouse present <sup>1</sup> .....	35,712	36,151	35,952	35,569	35,519	35,591	35,853	35,844	35,813
Women who maintain families <sup>2</sup> .....	9,998	10,064	9,893	-	-	-	-	-	-
<b>FULL- OR PART-TIME STATUS</b>									
Full-time workers <sup>3</sup> .....	123,570	126,468	125,985	124,301	125,882	126,676	126,636	126,758	126,723
Part-time workers <sup>4</sup> .....	28,228	27,713	27,616	27,890	27,529	27,603	27,142	27,138	27,257
<b>MULTIPLE JOBHOLDERS</b>									
Total multiple jobholders.....	7,675	7,593	7,776	7,558	7,350	7,350	7,209	7,342	7,647
Percent of total employed.....	5.1	4.9	5.1	5.0	4.8	4.8	4.7	4.8	5.0
<b>SELF-EMPLOYMENT</b>									
Self-employed workers, incorporated.....	5,835	6,021	6,047	-	-	-	-	-	-
Self-employed workers, unincorporated.....	9,596	9,785	9,624	9,772	9,370	9,605	9,705	9,713	9,763

<sup>1</sup> Refers to persons in opposite-sex married couples only.

<sup>2</sup> Refers to female householders residing with one or more family members, but not an opposite-sex spouse.

<sup>3</sup> Employed full-time workers are persons who usually work 35 hours or more per week.

<sup>4</sup> Employed part-time workers are persons who usually work less than 35 hours per week.

- Data not available.

NOTE: Detail for the seasonally adjusted data shown in this table will not necessarily add to totals because of the independent seasonal adjustment of the various series. Updated population controls are introduced annually with the release of January data.



# HOUSEHOLD DATA

## Table A-10. Selected unemployment indicators, seasonally adjusted

Characteristic	Number of unemployed persons (in thousands)			Unemployment rates					
	Dec. 2016	Nov. 2017	Dec. 2017	Dec. 2016	Aug. 2017	Sept. 2017	Oct. 2017	Nov. 2017	Dec. 2017
<b>AGE AND SEX</b>									
Total, 16 years and over.....	7,502	6,616	6,576	4.7	4.4	4.2	4.1	4.1	4.1
16 to 19 years.....	840	929	780	14.4	13.8	13.0	13.7	15.9	13.6
16 to 17 years.....	365	455	341	17.2	14.6	13.9	15.0	19.1	15.2
18 to 19 years.....	492	506	467	13.1	12.9	12.8	13.2	14.4	13.2
20 years and over.....	6,662	5,688	5,796	4.3	4.1	3.9	3.7	3.7	3.7
20 to 24 years.....	1,235	1,075	1,063	8.0	7.2	7.6	7.2	7.1	7.1
25 years and over.....	5,420	4,638	4,735	3.9	3.7	3.5	3.3	3.3	3.4
25 to 54 years.....	4,131	3,474	3,528	4.0	3.9	3.5	3.4	3.4	3.4
25 to 34 years.....	1,694	1,545	1,615	4.7	4.9	4.4	4.4	4.3	4.5
35 to 44 years.....	1,300	1,023	992	4.0	3.4	3.2	3.0	3.1	3.0
45 to 54 years.....	1,137	906	921	3.4	3.4	3.1	2.7	2.7	2.7
55 years and over.....	1,267	1,144	1,200	3.5	3.2	3.2	3.1	3.1	3.3
Men, 16 years and over.....	4,104	3,555	3,533	4.8	4.5	4.2	4.2	4.2	4.1
16 to 19 years.....	504	505	416	16.8	14.8	15.2	16.0	17.7	14.8
16 to 17 years.....	207	231	158	20.3	15.1	15.6	17.4	20.7	15.7
18 to 19 years.....	304	287	271	15.3	14.5	15.2	15.7	16.6	15.0
20 years and over.....	3,600	3,050	3,117	4.4	4.1	3.8	3.8	3.7	3.8
20 to 24 years.....	736	662	620	9.2	7.7	8.7	8.0	8.4	7.9
25 years and over.....	2,838	2,406	2,480	3.8	3.7	3.4	3.3	3.2	3.3
25 to 54 years.....	2,150	1,747	1,814	3.9	3.9	3.4	3.3	3.2	3.3
25 to 34 years.....	906	793	841	4.7	5.0	4.3	4.3	4.1	4.3
35 to 44 years.....	673	485	471	3.8	3.2	2.9	2.8	2.7	2.6
45 to 54 years.....	571	468	502	3.2	3.5	3.0	2.7	2.7	2.8
55 years and over.....	688	659	667	3.6	3.2	3.1	3.3	3.4	3.4
Women, 16 years and over.....	3,398	3,061	3,043	4.5	4.4	4.2	3.9	4.1	4.0
16 to 19 years.....	336	424	364	11.8	12.9	11.0	11.4	14.1	12.3
16 to 17 years.....	158	224	183	14.4	14.2	12.5	12.8	17.7	14.7
18 to 19 years.....	189	219	196	10.8	11.3	10.3	10.6	12.4	11.3
20 years and over.....	3,062	2,637	2,679	4.3	4.0	3.9	3.6	3.6	3.7
20 to 24 years.....	499	413	443	6.8	6.6	6.4	6.3	5.8	6.2
25 years and over.....	2,583	2,232	2,254	4.0	3.7	3.6	3.3	3.4	3.5
25 to 54 years.....	1,981	1,727	1,714	4.2	3.9	3.7	3.5	3.6	3.6
25 to 34 years.....	788	752	774	4.7	4.7	4.4	4.5	4.5	4.6
35 to 44 years.....	627	538	521	4.1	3.6	3.5	3.3	3.5	3.4
45 to 54 years.....	567	438	418	3.6	3.4	3.1	2.7	2.8	2.6
55 years and over.....	594	483	546	3.5	3.1	3.4	2.9	2.8	3.2
<b>MARITAL STATUS</b>									
Married men, spouse present <sup>1</sup> .....	1,272	969	1,033	2.7	2.6	2.3	2.0	2.1	2.2
Married women, spouse present <sup>1</sup> .....	1,071	833	942	2.9	2.8	2.5	2.4	2.3	2.6
Women who maintain families <sup>2</sup> .....	621	590	552	5.8	7.2	6.5	5.6	5.5	5.3
<b>FULL- OR PART-TIME STATUS</b>									
Full-time workers <sup>3</sup> .....	6,092	5,189	5,314	4.7	4.4	4.2	4.0	3.9	4.0
Part-time workers <sup>4</sup> .....	1,465	1,421	1,295	5.0	4.4	4.3	4.5	5.0	4.5

<sup>1</sup> Refers to persons in opposite-sex couples only.

<sup>2</sup> Data are not seasonally adjusted. Refers to female householders residing with one or more family members, but not an opposite-sex spouse.

<sup>3</sup> Full-time workers are unemployed persons who have expressed a desire to work full time (35 hours or more per week) or are on layoff from full-time jobs.

<sup>4</sup> Part-time workers are unemployed persons who have expressed a desire to work part time (less than 35 hours per week) or are on layoff from part-time jobs.

NOTE: Detail for the seasonally adjusted data shown in this table will not necessarily add to totals because of the independent seasonal adjustment of the various series. Updated population controls are introduced annually with the release of January data.

# HOUSEHOLD DATA

## Table A-11. Unemployed persons by reason for unemployment

[Numbers in thousands]

Reason	Not seasonally adjusted			Seasonally adjusted					
	Dec. 2016	Nov. 2017	Dec. 2017	Dec. 2016	Aug. 2017	Sept. 2017	Oct. 2017	Nov. 2017	Dec. 2017
<b>NUMBER OF UNEMPLOYED</b>									
Job losers and persons who completed temporary jobs.....	3,668	2,907	3,298	3,627	3,497	3,316	3,214	3,149	3,254
On temporary layoff.....	1,117	807	1,010	1,019	1,030	891	862	950	915
Not on temporary layoff.....	2,550	2,100	2,288	2,608	2,467	2,425	2,352	2,200	2,339
Permanent job losers.....	1,863	1,483	1,604	1,903	1,777	1,728	1,688	1,539	1,636
Persons who completed temporary jobs....	687	617	684	705	690	697	664	661	703
Job leavers.....	842	757	673	896	790	737	731	739	715
Reentrants.....	2,003	1,978	1,827	2,202	2,137	2,068	2,001	2,025	2,003
New entrants.....	657	644	480	791	653	663	626	697	581
<b>PERCENT DISTRIBUTION</b>									
Job losers and persons who completed temporary jobs.....	51.2	46.2	52.5	48.3	49.4	48.9	48.9	47.6	49.7
On temporary layoff.....	15.6	12.8	16.1	13.6	14.6	13.1	13.1	14.4	14.0
Not on temporary layoff.....	35.6	33.4	36.4	34.7	34.9	35.8	35.8	33.3	35.7
Job leavers.....	11.7	12.0	10.7	11.9	11.2	10.9	11.1	11.2	10.9
Reentrants.....	27.9	31.5	29.1	29.3	30.2	30.5	30.5	30.6	30.6
New entrants.....	9.2	10.2	7.7	10.5	9.2	9.8	9.5	10.5	8.9
<b>UNEMPLOYED AS A PERCENT OF THE CIVILIAN LABOR FORCE</b>									
Job losers and persons who completed temporary jobs.....	2.3	1.8	2.1	2.3	2.2	2.1	2.0	2.0	2.0
Job leavers.....	0.5	0.5	0.4	0.6	0.5	0.5	0.5	0.5	0.4
Reentrants.....	1.3	1.2	1.1	1.4	1.3	1.3	1.2	1.3	1.2
New entrants.....	0.4	0.4	0.3	0.5	0.4	0.4	0.4	0.4	0.4

NOTE: Updated population controls are introduced annually with the release of January data.

**HOUSEHOLD DATA**

**Table A-12. Unemployed persons by duration of unemployment**

[Numbers in thousands]

Duration	Not seasonally adjusted			Seasonally adjusted					
	Dec. 2016	Nov. 2017	Dec. 2017	Dec. 2016	Aug. 2017	Sept. 2017	Oct. 2017	Nov. 2017	Dec. 2017
<b>NUMBER OF UNEMPLOYED</b>									
Less than 5 weeks.....	2,251	2,084	2,144	2,359	2,221	2,223	2,128	2,253	2,235
5 to 14 weeks.....	1,974	1,753	1,848	2,136	1,996	1,879	1,943	1,894	1,994
15 weeks and over.....	2,945	2,449	2,287	3,060	2,802	2,695	2,500	2,514	2,397
15 to 26 weeks.....	1,176	921	867	1,191	1,067	962	856	921	882
27 weeks and over.....	1,769	1,529	1,420	1,869	1,735	1,733	1,645	1,593	1,515
Average (mean) duration, in weeks.....	25.8	26.3	23.5	25.9	24.3	26.6	25.8	25.2	23.6
Median duration, in weeks.....	10.5	9.7	8.8	10.8	10.3	10.1	9.8	9.5	9.1
<b>PERCENT DISTRIBUTION</b>									
Less than 5 weeks.....	31.4	33.2	34.1	31.2	31.6	32.7	32.4	33.8	33.7
5 to 14 weeks.....	27.5	27.9	29.4	28.3	28.4	27.6	29.6	28.4	30.1
15 weeks and over.....	41.1	39.0	36.4	40.5	39.9	39.7	38.0	37.7	36.2
15 to 26 weeks.....	16.4	14.6	13.8	15.8	15.2	14.2	13.0	13.8	13.3
27 weeks and over.....	24.7	24.3	22.6	24.7	24.7	25.5	25.0	23.9	22.9

NOTE: Updated population controls are introduced annually with the release of January data.

**HOUSEHOLD DATA**

**Table A-13. Employed and unemployed persons by occupation, not seasonally adjusted**

[Numbers in thousands]

Occupation	Employed		Unemployed		Unemployment rates	
	Dec. 2016	Dec. 2017	Dec. 2016	Dec. 2017	Dec. 2016	Dec. 2017
Total, 16 years and over <sup>1</sup> .....	151,798	153,602	7,170	6,278	4.5	3.9
Management, professional, and related occupations.....	60,069	62,121	1,361	1,290	2.2	2.0
Management, business, and financial operations occupations.....	25,216	25,760	609	514	2.4	2.0
Professional and related occupations.....	34,853	36,361	752	775	2.1	2.1
Service occupations.....	26,459	25,826	1,493	1,405	5.3	5.2
Sales and office occupations.....	33,976	33,633	1,482	1,268	4.2	3.6
Sales and related occupations.....	16,019	15,985	768	627	4.6	3.8
Office and administrative support occupations.....	17,958	17,649	714	641	3.8	3.5
Natural resources, construction, and maintenance occupations.....	13,653	14,299	1,064	961	7.2	6.3
Farming, fishing, and forestry occupations.....	926	1,107	170	195	15.5	15.0
Construction and extraction occupations.....	7,790	8,198	724	600	8.5	6.8
Installation, maintenance, and repair occupations.....	4,938	4,994	170	166	3.3	3.2
Production, transportation, and material moving occupations.....	17,641	17,722	1,097	865	5.9	4.7
Production occupations.....	8,315	8,546	487	376	5.5	4.2
Transportation and material moving occupations.....	9,326	9,177	610	489	6.1	5.1

<sup>1</sup> Persons with no previous work experience and persons whose last job was in the U.S. Armed Forces are included in the unemployed total.

NOTE: Updated population controls are introduced annually with the release of January data.

**HOUSEHOLD DATA**

**Table A-14. Unemployed persons by industry and class of worker, not seasonally adjusted**

Industry and class of worker	Number of unemployed persons (in thousands)		Unemployment rates	
	Dec. 2016	Dec. 2017	Dec. 2016	Dec. 2017
Total, 16 years and over <sup>1</sup> .....	7,170	6,278	4.5	3.9
Nonagricultural private wage and salary workers.....	5,581	4,841	4.5	3.8
Mining, quarrying, and oil and gas extraction.....	27	41	3.7	5.1
Construction.....	670	554	7.4	5.9
Manufacturing.....	630	505	4.0	3.3
Durable goods.....	366	289	3.7	3.0
Nondurable goods.....	264	217	4.5	3.8
Wholesale and retail trade.....	955	841	4.6	4.1
Transportation and utilities.....	241	208	3.6	3.0
Information.....	87	108	3.1	3.8
Financial activities.....	251	143	2.6	1.5
Professional and business services.....	879	712	5.3	4.2
Education and health services.....	667	706	2.9	3.0
Leisure and hospitality.....	899	833	6.4	6.2
Other services.....	276	189	4.2	2.8
Agriculture and related private wage and salary workers.....	166	210	11.2	11.9
Government workers.....	401	460	1.9	2.2
Self-employed workers, unincorporated, and unpaid family workers.....	365	287	3.6	2.9

<sup>1</sup> Persons with no previous work experience and persons whose last job was in the U.S. Armed Forces are included in the unemployed total.

NOTE: Updated population controls are introduced annually with the release of January data.

**HOUSEHOLD DATA**

**Table A-15. Alternative measures of labor underutilization**

[Percent]

Measure	Not seasonally adjusted			Seasonally adjusted					
	Dec. 2016	Nov. 2017	Dec. 2017	Dec. 2016	Aug. 2017	Sept. 2017	Oct. 2017	Nov. 2017	Dec. 2017
U-1 Persons unemployed 15 weeks or longer, as a percent of the civilian labor force.....	1.9	1.5	1.4	1.9	1.7	1.7	1.6	1.6	1.5
U-2 Job losers and persons who completed temporary jobs, as a percent of the civilian labor force.....	2.3	1.8	2.1	2.3	2.2	2.1	2.0	2.0	2.0
U-3 Total unemployed, as a percent of the civilian labor force (official unemployment rate).....	4.5	3.9	3.9	4.7	4.4	4.2	4.1	4.1	4.1
U-4 Total unemployed plus discouraged workers, as a percent of the civilian labor force plus discouraged workers.....	4.8	4.2	4.2	5.0	4.7	4.4	4.4	4.4	4.4
U-5 Total unemployed, plus discouraged workers, plus all other persons marginally attached to the labor force, as a percent of the civilian labor force plus all persons marginally attached to the labor force.....	5.5	4.8	4.9	5.7	5.4	5.1	5.0	5.0	5.1
U-6 Total unemployed, plus all persons marginally attached to the labor force, plus total employed part time for economic reasons, as a percent of the civilian labor force plus all persons marginally attached to the labor force.....	9.1	7.7	8.0	9.1	8.6	8.3	8.0	8.0	8.1

NOTE: Persons marginally attached to the labor force are those who currently are neither working nor looking for work but indicate that they want and are available for a job and have looked for work sometime in the past 12 months. Discouraged workers, a subset of the marginally attached, have given a job-market related reason for not currently looking for work. Persons employed part time for economic reasons are those who want and are available for full-time work but have had to settle for a part-time schedule. Updated population controls are introduced annually with the release of January data.

**HOUSEHOLD DATA**

**Table A-16. Persons not in the labor force and multiple jobholders by sex, not seasonally adjusted**

[Numbers in thousands]

Category	Total		Men		Women	
	Dec. 2016	Dec. 2017	Dec. 2016	Dec. 2017	Dec. 2016	Dec. 2017
<b>NOT IN THE LABOR FORCE</b>						
Total not in the labor force.....	95,774	96,230	38,636	38,955	57,138	57,275
Persons who currently want a job.....	5,449	5,071	2,631	2,330	2,819	2,742
Marginally attached to the labor force <sup>1</sup> .....	1,684	1,623	963	811	721	812
Discouraged workers <sup>2</sup> .....	426	474	295	316	131	158
Other persons marginally attached to the labor force <sup>3</sup> ..	1,258	1,149	668	495	590	654
<b>MULTIPLE JOBHOLDERS</b>						
Total multiple jobholders <sup>4</sup> .....	7,675	7,776	3,630	3,744	4,045	4,032
Percent of total employed.....	5.1	5.1	4.5	4.6	5.7	5.6
Primary job full time, secondary job part time.....	4,204	4,391	2,235	2,335	1,969	2,056
Primary and secondary jobs both part time.....	2,078	1,964	682	668	1,396	1,296
Primary and secondary jobs both full time.....	282	269	162	154	120	116
Hours vary on primary or secondary job.....	1,050	1,091	521	560	529	531

<sup>1</sup> Data refer to persons who want a job, have searched for work during the prior 12 months, and were available to take a job during the reference week, but had not looked for work in the past 4 weeks.

<sup>2</sup> Includes those who did not actively look for work in the prior 4 weeks for reasons such as thinks no work available, could not find work, lacks schooling or training, employer thinks too young or old, and other types of discrimination.

<sup>3</sup> Includes those who did not actively look for work in the prior 4 weeks for such reasons as school or family responsibilities, ill health, and transportation problems, as well as a number for whom reason for nonparticipation was not determined.

<sup>4</sup> Includes a small number of persons who work part time on their primary job and full time on their secondary job(s), not shown separately.

NOTE: Updated population controls are introduced annually with the release of January data.

**ESTABLISHMENT DATA**

**Table B-1. Employees on nonfarm payrolls by industry sector and selected industry detail**

[In thousands]

Industry	Not seasonally adjusted				Seasonally adjusted				Change from: Nov.2017 - Dec.2017 <sup>P</sup>
	Dec. 2016	Oct. 2017	Nov. 2017 <sup>P</sup>	Dec. 2017 <sup>P</sup>	Dec. 2016	Oct. 2017	Nov. 2017 <sup>P</sup>	Dec. 2017 <sup>P</sup>	
Total nonfarm.....	146,158	147,952	148,526	148,346	145,325	146,980	147,232	147,380	148
Total private.....	123,522	125,268	125,716	125,654	123,026	124,654	124,893	125,039	146
Goods-producing.....	19,670	20,351	20,299	20,179	19,794	20,141	20,204	20,259	55
Mining and logging.....	669	731	735	730	668	722	727	727	0
Logging.....	50.3	50.0	51.1	51.2	51.0	48.8	49.9	50.7	0.8
Mining.....	618.3	680.5	683.6	678.9	616.8	673.3	677.5	675.8	-1.7
Oil and gas extraction.....	177.7	179.3	180.3	178.9	177.3	178.9	179.0	177.9	-1.1
Mining, except oil and gas.....	179.7	188.7	187.8	184.4	182.0	186.5	187.1	186.3	-0.8
Coal mining.....	50.2	52.1	51.1	50.9	49.7	51.6	50.9	50.5	-0.4
Metal ore mining.....	39.3	38.9	38.7	38.9	39.1	39.0	38.8	38.8	0.0
Nonmetallic mineral mining and quarrying.....	90.2	97.7	98.0	94.6	93.2	95.9	97.4	97.1	-0.3
Support activities for mining.....	260.9	312.5	315.5	315.6	257.5	307.9	311.4	311.6	0.2
Construction.....	6,660	7,125	7,057	6,910	6,783	6,936	6,963	6,993	30
Construction of buildings.....	1,491.9	1,564.7	1,556.2	1,544.4	1,503.2	1,534.1	1,543.5	1,550.4	6.9
Residential building.....	751.0	783.0	778.4	780.0	753.6	767.5	772.6	780.8	8.2
Nonresidential building.....	740.9	781.7	777.8	764.4	749.6	766.6	770.9	769.6	-1.3
Heavy and civil engineering construction.....	885.3	1,023.7	982.9	917.2	935.0	962.9	957.9	957.2	-0.7
Specialty trade contractors.....	4,282.5	4,536.6	4,517.7	4,448.4	4,345.0	4,439.3	4,461.3	4,485.1	23.8
Residential specialty trade contractors.....	1,882.7	1,988.5	1,982.3	1,954.6	1,912.2	1,952.8	1,961.4	1,971.4	10.0
Nonresidential specialty trade contractors.....	2,399.8	2,548.1	2,535.4	2,493.8	2,432.8	2,486.5	2,499.9	2,513.7	13.8
Manufacturing.....	12,341	12,495	12,507	12,539	12,343	12,483	12,514	12,539	25
Durable goods.....	7,709	7,788	7,816	7,847	7,708	7,791	7,817	7,838	21
Wood products.....	396.0	396.3	395.2	396.7	396.2	394.9	394.3	395.0	0.7
Nonmetallic mineral products.....	407.0	421.4	421.6	416.7	412.3	416.1	418.0	419.7	1.7
Primary metals.....	377.2	385.6	386.0	390.6	375.8	386.6	387.7	390.3	2.6
Fabricated metal products.....	1,422.1	1,455.8	1,464.8	1,470.8	1,421.6	1,456.7	1,464.5	1,469.9	5.4
Machinery.....	1,075.7	1,094.6	1,103.1	1,113.2	1,075.6	1,098.7	1,106.7	1,112.7	6.0
Computer and electronic products.....	1,040.7	1,045.3	1,048.8	1,054.9	1,039.4	1,047.1	1,050.6	1,053.6	3.0
Computer and peripheral equipment.....	162.4	167.8	170.1	170.4	162.4	167.7	169.7	169.7	0.0
Communications equipment.....	84.0	84.8	84.7	84.9	84.2	85.0	84.7	84.8	0.1
Semiconductors and electronic components.....	363.2	362.4	363.2	367.2	362.1	363.5	364.5	366.8	2.3
Electronic instruments.....	396.4	397.0	398.3	400.2	396.0	397.9	399.4	400.1	0.7
Miscellaneous computer and electronic products.....	34.7	33.3	32.5	32.2	34.6	33.1	32.2	32.2	0.0
Electrical equipment and appliances.....	382.7	394.1	395.6	397.8	383.2	394.8	396.1	397.3	1.2
Transportation equipment <sup>1</sup> .....	1,623.8	1,611.2	1,617.0	1,622.1	1,619.8	1,613.5	1,615.9	1,616.9	1.0
Motor vehicles and parts <sup>2</sup> .....	946.1	937.2	941.4	945.5	942.4	938.7	940.2	941.5	1.3
Furniture and related products.....	391.0	391.4	388.8	389.6	392.8	391.0	390.1	389.4	-0.7
Miscellaneous durable goods manufacturing.....	592.7	592.2	595.3	594.9	591.4	591.5	592.8	592.8	0.0
Nondurable goods.....	4,632	4,707	4,691	4,692	4,635	4,692	4,697	4,701	4
Food manufacturing.....	1,565.8	1,618.2	1,606.3	1,609.7	1,568.2	1,608.7	1,611.9	1,616.4	4.5
Textile mills.....	112.2	110.1	109.9	110.5	112.2	110.2	109.5	110.3	0.8
Textile product mills.....	112.8	109.2	109.6	108.8	112.8	108.7	108.7	108.5	-0.2
Apparel.....	129.8	118.3	118.2	116.8	128.9	117.3	116.5	115.8	-0.7
Paper and paper products.....	368.7	369.0	370.0	369.9	368.3	369.9	370.8	369.6	-1.2
Printing and related support activities.....	444.1	436.6	436.7	436.6	442.3	436.0	435.0	433.9	-1.1
Petroleum and coal products.....	110.0	115.6	113.0	108.4	111.0	112.6	112.2	110.3	-1.9
Chemicals.....	812.5	823.4	821.8	828.5	809.8	826.2	826.5	828.4	1.9
Plastics and rubber products.....	695.8	706.8	711.2	713.1	698.3	710.2	713.5	714.6	1.1
Miscellaneous nondurable goods manufacturing.....	280.3	299.7	294.0	289.8	283.6	291.8	292.1	293.0	0.9
Private service-providing.....	103,852	104,917	105,417	105,475	103,232	104,513	104,689	104,780	91
Trade, transportation, and utilities.....	28,090	27,479	28,025	28,220	27,374	27,415	27,458	27,448	-10
Wholesale trade.....	5,892.8	5,951.6	5,961.0	5,964.3	5,888.4	5,943.5	5,949.4	5,959.2	9.8
Durable goods.....	2,933.0	2,967.9	2,981.3	2,989.2	2,932.7	2,970.5	2,980.0	2,986.6	6.6
Nondurable goods.....	2,054.6	2,072.1	2,069.7	2,065.3	2,052.9	2,063.3	2,062.9	2,065.8	2.9

See footnotes at end of table.



**ESTABLISHMENT DATA**

**Table B-1. Employees on nonfarm payrolls by industry sector and selected industry detail**

— Continued

[In thousands]

Industry	Not seasonally adjusted				Seasonally adjusted				Change from: Nov.2017 - Dec.2017 <sup>P</sup>
	Dec. 2016	Oct. 2017	Nov. 2017 <sup>P</sup>	Dec. 2017 <sup>P</sup>	Dec. 2016	Oct. 2017	Nov. 2017 <sup>P</sup>	Dec. 2017 <sup>P</sup>	
Wholesale trade - Continued									
Electronic markets and agents and brokers.....	905.2	911.6	910.0	909.8	902.8	909.7	906.5	906.8	0.3
Retail trade.....	16,375.9	15,823.9	16,286.6	16,345.9	15,881.0	15,808.4	15,834.8	15,814.5	-20.3
Motor vehicle and parts dealers.....	1,993.4	2,025.7	2,025.3	2,019.1	2,002.0	2,023.7	2,025.4	2,028.3	2.9
Automobile dealers.....	1,293.5	1,312.4	1,311.2	1,307.6	1,295.3	1,309.0	1,309.2	1,310.2	1.0
Other motor vehicle dealers.....	145.2	153.9	150.7	150.0	152.5	155.6	155.8	157.7	1.9
Auto parts, accessories, and tire stores...	554.7	559.4	563.4	561.5	554.2	559.0	560.4	560.4	0.0
Furniture and home furnishings stores.....	494.2	487.9	504.6	510.7	478.0	486.1	487.7	489.9	2.2
Electronics and appliance stores.....	532.7	500.0	513.4	514.3	509.0	497.2	491.5	495.3	3.8
Building material and garden supply stores.....	1,242.9	1,284.6	1,282.1	1,276.0	1,283.2	1,306.2	1,309.6	1,311.5	1.9
Food and beverage stores.....	3,117.5	3,080.1	3,111.3	3,124.0	3,097.0	3,080.3	3,091.6	3,098.1	6.5
Health and personal care stores.....	1,080.8	1,044.7	1,065.5	1,067.4	1,065.0	1,046.9	1,050.5	1,046.6	-3.9
Gasoline stations.....	929.9	942.0	947.1	938.2	934.3	939.9	944.1	941.1	-3.0
Clothing and clothing accessories stores....	1,489.7	1,308.1	1,434.8	1,457.9	1,340.8	1,317.2	1,316.0	1,312.2	-3.8
Sporting goods, hobby, book, and music stores.....	689.0	606.0	671.4	685.0	614.8	608.7	612.4	610.8	-1.6
General merchandise stores.....	3,392.0	3,130.5	3,303.0	3,316.8	3,180.2	3,113.0	3,117.2	3,089.9	-27.3
Department stores.....	1,448.4	1,277.4	1,393.2	1,425.7	1,301.6	1,278.1	1,281.2	1,273.0	-8.2
Other general merchandise stores.....	1,943.6	1,853.1	1,909.8	1,891.1	1,878.7	1,834.9	1,836.0	1,816.9	-19.1
Miscellaneous store retailers.....	840.6	836.8	839.6	842.8	830.3	823.1	825.4	827.2	1.8
Nonstore retailers.....	573.2	577.5	588.5	593.7	546.4	566.1	563.4	563.6	0.2
Transportation and warehousing.....	5,264.8	5,150.9	5,225.3	5,357.5	5,048.0	5,109.4	5,120.5	5,122.3	1.8
Air transportation.....	476.8	492.5	491.2	491.4	479.3	492.5	493.0	493.2	0.2
Rail transportation.....	210.9	205.5	205.5	204.3	210.8	205.3	204.9	204.4	-0.5
Water transportation.....	63.3	65.6	64.5	64.9	64.4	65.5	65.6	66.0	0.4
Truck transportation.....	1,465.0	1,492.5	1,486.6	1,476.2	1,464.9	1,475.2	1,475.9	1,475.3	-0.6
Transit and ground passenger transportation.....	484.6	497.5	493.5	493.5	470.0	480.1	478.0	479.0	1.0
Pipeline transportation.....	48.5	46.8	47.1	47.0	48.5	46.8	47.1	46.9	-0.2
Scenic and sightseeing transportation.....	29.3	38.0	31.4	30.0	35.3	36.4	35.9	36.0	0.1
Support activities for transportation.....	665.8	674.9	674.9	680.5	664.0	670.7	672.9	677.0	4.1
Couriers and messengers.....	855.2	662.8	731.6	874.4	668.0	673.8	676.1	678.2	2.1
Warehousing and storage.....	965.4	974.8	999.0	995.3	942.8	963.1	971.1	966.3	-4.8
Utilities.....	556.8	552.6	552.2	552.2	556.7	553.4	553.2	552.3	-0.9
Information.....	2,775	2,715	2,729	2,730	2,762	2,714	2,715	2,722	7
Publishing industries, except Internet.....	733.2	718.8	719.6	719.5	729.5	717.4	717.2	716.0	-1.2
Motion picture and sound recording industries.....	415.0	403.2	412.1	408.8	415.9	405.1	403.1	410.5	7.4
Broadcasting, except Internet.....	264.6	262.2	260.9	260.3	264.7	260.7	259.6	258.9	-0.7
Telecommunications.....	793.3	751.8	755.8	756.9	786.2	752.8	754.0	753.3	-0.7
Data processing, hosting and related services.....	303.9	306.1	306.7	308.4	300.7	305.3	306.6	307.0	0.4
Other information services.....	264.9	272.8	274.1	276.5	265.2	273.1	274.7	275.9	1.2
Financial activities.....	8,373	8,489	8,485	8,505	8,364	8,485	8,492	8,498	6
Finance and insurance.....	6,210.7	6,266.9	6,268.8	6,284.9	6,194.6	6,267.4	6,268.1	6,271.8	3.7
Monetary authorities - central bank.....	18.9	18.7	18.7	18.7	18.8	18.7	18.7	18.7	0.0
Credit intermediation and related activities.....	2,644.3	2,659.2	2,661.1	2,668.4	2,637.9	2,663.7	2,663.7	2,664.8	1.1
Depository credit intermediation <sup>1</sup> .....	1,709.1	1,713.2	1,716.1	1,717.3	1,708.9	1,719.3	1,719.3	1,717.9	-1.4
Commercial banking.....	1,313.2	1,310.7	1,312.4	1,313.1	1,310.9	1,314.9	1,315.0	1,313.9	-1.1
Nondepository credit intermediation.....	626.4	631.5	630.2	632.3	621.9	629.7	628.9	628.8	-0.1
Activities related to credit intermediation...	308.8	314.5	314.8	318.8	307.0	314.7	315.6	318.2	2.6
Securities, commodity contracts, investments, and funds and trusts.....	934.6	952.4	953.3	956.6	933.0	950.5	952.7	953.4	0.7
Insurance carriers and related activities.....	2,612.9	2,636.6	2,635.7	2,641.2	2,604.9	2,634.5	2,633.0	2,634.9	1.9
Real estate and rental and leasing.....	2,161.9	2,222.5	2,216.5	2,220.0	2,169.3	2,217.1	2,223.7	2,225.9	2.2
Real estate.....	1,586.0	1,617.3	1,615.1	1,622.5	1,586.4	1,612.5	1,616.4	1,618.0	1.6
Rental and leasing services.....	552.3	582.0	578.1	574.1	559.5	581.4	584.2	584.7	0.5
Lessors of nonfinancial intangible assets....	23.6	23.2	23.3	23.4	23.4	23.2	23.1	23.2	0.1

See footnotes at end of table.

**ESTABLISHMENT DATA**

**Table B-1. Employees on nonfarm payrolls by industry sector and selected industry detail**

— Continued

[In thousands]

Industry	Not seasonally adjusted				Seasonally adjusted				Change from: Nov.2017 - Dec.2017 <sup>P</sup>
	Dec. 2016	Oct. 2017	Nov. 2017 <sup>P</sup>	Dec. 2017 <sup>P</sup>	Dec. 2016	Oct. 2017	Nov. 2017 <sup>P</sup>	Dec. 2017 <sup>P</sup>	
Private service-providing - Continued									
Professional and business services.....	20,521	21,067	21,125	21,042	20,416	20,875	20,924	20,943	19
Professional and technical services.....	9,036.5	9,181.7	9,232.0	9,243.4	9,013.2	9,198.9	9,219.9	9,215.2	-4.7
Legal services.....	1,130.5	1,130.5	1,130.1	1,133.6	1,126.1	1,128.0	1,127.6	1,128.2	0.6
Accounting and bookkeeping services.....	997.8	946.7	979.1	992.2	1,000.0	1,005.1	1,009.1	993.7	-15.4
Architectural and engineering services.....	1,424.8	1,478.5	1,473.3	1,473.5	1,427.3	1,469.9	1,472.6	1,474.9	2.3
Specialized design services.....	143.1	141.8	143.7	143.5	141.2	140.6	142.0	141.7	-0.3
Computer systems design and related services.....	2,028.1	2,081.7	2,087.9	2,079.8	2,031.5	2,071.5	2,075.0	2,078.3	3.3
Management and technical consulting services.....	1,422.3	1,469.8	1,477.8	1,478.5	1,407.4	1,457.0	1,463.6	1,464.4	0.8
Scientific research and development services.....	694.6	708.8	710.5	711.9	695.0	711.2	711.4	711.6	0.2
Advertising and related services.....	491.4	489.6	489.5	491.5	488.3	487.3	487.1	489.6	2.5
Other professional and technical services.....	703.9	734.3	740.1	738.9	696.4	728.1	731.4	732.8	1.4
Management of companies and enterprises.....	2,265.6	2,283.7	2,289.4	2,298.5	2,258.9	2,287.4	2,290.2	2,294.0	3.8
Administrative and waste services.....	9,218.9	9,601.8	9,603.6	9,499.9	9,143.6	9,388.4	9,413.9	9,434.1	20.2
Administrative and support services.....	8,807.5	9,182.8	9,186.0	9,081.8	8,730.6	8,970.0	8,995.5	9,014.1	18.6
Office administrative services.....	510.5	531.8	534.4	536.2	510.4	531.6	532.6	535.3	2.7
Facilities support services.....	140.7	147.2	146.7	147.9	140.6	146.3	146.7	148.0	1.3
Employment services <sup>1</sup> .....	3,759.5	3,880.4	3,923.2	3,907.8	3,618.0	3,748.4	3,767.4	3,778.2	10.8
Temporary help services.....	3,093.1	3,193.2	3,231.5	3,214.2	2,961.6	3,073.4	3,090.3	3,097.3	7.0
Business support services.....	941.8	930.2	941.6	940.0	920.0	915.3	918.7	915.3	-3.4
Travel arrangement and reservation services.....	213.8	214.5	212.9	213.9	215.0	215.1	214.6	215.8	1.2
Investigation and security services.....	918.4	928.8	928.3	930.5	910.3	921.0	919.5	924.3	4.8
Services to buildings and dwellings.....	2,014.8	2,213.7	2,167.8	2,076.1	2,101.4	2,161.4	2,162.1	2,162.0	-0.1
Other support services.....	308.0	336.2	331.1	329.4	314.8	331.0	333.8	335.2	1.4
Waste management and remediation services.....	411.4	419.0	417.6	418.1	413.0	418.4	418.4	420.0	1.6
Education and health services.....	23,023	23,429	23,525	23,485	22,871	23,231	23,281	23,309	28
Educational services.....	3,699.1	3,820.3	3,860.9	3,778.1	3,603.6	3,658.9	3,669.2	3,668.9	-0.3
Health care and social assistance.....	19,324.3	19,608.3	19,664.1	19,707.3	19,266.9	19,572.4	19,611.3	19,640.5	29.2
Health care <sup>3</sup> .....	15,641.9	15,863.2	15,901.4	15,949.5	15,594.5	15,833.4	15,862.8	15,894.2	31.4
Ambulatory health care services.....	7,224.2	7,387.8	7,411.1	7,427.8	7,194.7	7,361.6	7,385.5	7,400.3	14.8
Offices of physicians.....	2,575.6	2,616.4	2,621.1	2,626.7	2,558.9	2,606.8	2,611.9	2,612.6	0.7
Offices of dentists.....	937.7	948.2	951.0	957.6	937.1	947.2	949.7	957.4	7.7
Offices of other health practitioners.....	886.0	910.3	919.4	919.2	884.2	907.9	913.5	916.1	2.6
Outpatient care centers.....	884.3	920.1	924.8	929.4	880.5	919.9	924.0	926.7	2.7
Medical and diagnostic laboratories.....	263.1	262.6	263.0	265.3	262.0	261.8	262.4	263.6	1.2
Home health care services.....	1,384.8	1,428.2	1,432.3	1,432.5	1,380.0	1,420.2	1,426.8	1,426.8	0.0
Other ambulatory health care services.....	292.7	302.0	299.5	297.1	291.9	297.9	297.2	297.1	-0.1
Hospitals.....	5,087.3	5,144.9	5,149.6	5,166.9	5,077.0	5,139.6	5,140.4	5,152.8	12.4
Nursing and residential care facilities.....	3,330.4	3,330.5	3,340.7	3,354.8	3,322.8	3,332.2	3,336.9	3,341.1	4.2
Nursing care facilities.....	1,651.1	1,630.5	1,634.5	1,638.9	1,645.8	1,630.7	1,631.9	1,631.8	-0.1
Residential mental health facilities.....	616.2	620.9	624.4	628.2	615.8	622.3	624.6	627.5	2.9
Community care facilities for the elderly.....	899.1	912.3	913.5	918.9	897.3	912.4	912.3	913.2	0.9
Other residential care facilities.....	164.0	168.8	168.3	168.8	163.9	166.9	168.1	168.6	0.5
Social assistance.....	3,682.4	3,745.1	3,762.7	3,757.8	3,672.4	3,739.0	3,748.5	3,746.3	-2.2
Individual and family services.....	2,261.8	2,312.8	2,324.5	2,321.9	2,262.0	2,314.7	2,322.0	2,319.2	-2.8
Emergency and other relief services.....	166.6	168.6	169.8	172.7	166.0	169.5	170.3	170.9	0.6
Vocational rehabilitation services.....	336.2	336.5	337.5	336.4	335.5	336.9	337.3	337.1	-0.2
Child day care services.....	917.8	927.2	930.9	926.8	908.9	917.9	918.9	919.1	0.2
Leisure and hospitality.....	15,394	15,951	15,738	15,703	15,744	16,004	16,021	16,050	29
Arts, entertainment, and recreation.....	2,059.8	2,244.6	2,125.2	2,109.4	2,245.9	2,285.9	2,283.1	2,286.9	3.8
Performing arts and spectator sports.....	424.9	473.7	452.5	450.3	449.8	467.2	466.8	470.3	3.5
Museums, historical sites, and similar institutions.....	153.4	169.4	164.4	164.9	161.4	168.8	171.3	173.5	2.2
Amusements, gambling, and recreation.....	1,481.5	1,601.5	1,508.3	1,494.2	1,634.7	1,649.9	1,645.0	1,643.1	-1.9
Accommodation and food services.....	13,334.5	13,706.7	13,613.1	13,593.8	13,498.4	13,717.9	13,737.4	13,762.8	25.4

See footnotes at end of table.

**ESTABLISHMENT DATA**

**Table B-1. Employees on nonfarm payrolls by industry sector and selected industry detail**

— Continued

[In thousands]

Industry	Not seasonally adjusted				Seasonally adjusted				Change from: Nov.2017 - Dec.2017 <sup>P</sup>
	Dec. 2016	Oct. 2017	Nov. 2017 <sup>P</sup>	Dec. 2017 <sup>P</sup>	Dec. 2016	Oct. 2017	Nov. 2017 <sup>P</sup>	Dec. 2017 <sup>P</sup>	
Accommodation and food services - Continued									
Accommodation.....	1,882.8	1,948.9	1,911.3	1,899.6	1,949.5	1,961.7	1,965.0	1,965.3	0.3
Food services and drinking places.....	11,451.7	11,757.8	11,701.8	11,694.2	11,548.9	11,756.2	11,772.4	11,797.5	25.1
Other services.....	5,676	5,787	5,790	5,790	5,701	5,789	5,798	5,810	12
Repair and maintenance.....	1,275.9	1,299.5	1,297.6	1,296.5	1,287.7	1,299.6	1,303.1	1,304.4	1.3
Personal and laundry services.....	1,461.9	1,504.9	1,509.6	1,511.0	1,462.6	1,503.2	1,506.8	1,510.7	3.9
Membership associations and organizations...	2,938.2	2,982.8	2,982.5	2,982.2	2,950.4	2,985.8	2,988.2	2,994.5	6.3
Government.....	22,636	22,684	22,810	22,692	22,299	22,326	22,339	22,341	2
Federal.....	2,837.0	2,804.0	2,794.0	2,819.0	2,819.0	2,807.0	2,802.0	2,803.0	1.0
Federal, except U.S. Postal Service.....	2,199.8	2,189.6	2,180.9	2,190.8	2,199.7	2,191.2	2,189.5	2,189.9	0.4
U.S. Postal Service.....	637.4	614.7	613.4	628.0	619.1	615.6	612.9	612.6	-0.3
State government.....	5,190.0	5,210.0	5,249.0	5,177.0	5,085.0	5,062.0	5,070.0	5,066.0	-4.0
State government education.....	2,524.2	2,559.7	2,600.9	2,530.0	2,414.1	2,403.5	2,411.6	2,408.6	-3.0
State government, excluding education.....	2,665.9	2,650.6	2,648.2	2,646.7	2,671.1	2,658.4	2,657.9	2,657.1	-0.8
Local government.....	14,609.0	14,670.0	14,767.0	14,696.0	14,395.0	14,457.0	14,467.0	14,472.0	5.0
Local government education.....	8,246.2	8,238.5	8,333.5	8,293.2	7,944.6	7,984.7	7,987.4	7,990.0	2.6
Local government, excluding education.....	6,363.2	6,431.5	6,433.1	6,402.5	6,450.0	6,472.2	6,479.2	6,482.3	3.1

<sup>1</sup> Includes other industries, not shown separately.

<sup>2</sup> Includes motor vehicles, motor vehicle bodies and trailers, and motor vehicle parts.

<sup>3</sup> Includes ambulatory health care services, hospitals, and nursing and residential care facilities.

p Preliminary

NOTE: Data have been revised to reflect March 2016 benchmark levels and updated seasonal adjustment factors.

**ESTABLISHMENT DATA**

**Table B-2. Average weekly hours and overtime of all employees on private nonfarm payrolls by industry sector, seasonally adjusted**

Industry	Dec. 2016	Oct. 2017	Nov. 2017 <sup>p</sup>	Dec. 2017 <sup>p</sup>
<b>AVERAGE WEEKLY HOURS</b>				
Total private.....	34.4	34.4	34.5	34.5
Goods-producing.....	40.2	40.4	40.5	40.5
Mining and logging.....	43.7	45.4	45.5	45.8
Construction.....	38.9	39.0	39.1	39.3
Manufacturing.....	40.7	40.9	40.9	40.8
Durable goods.....	41.2	41.5	41.4	41.4
Nondurable goods.....	39.9	40.0	40.2	39.9
Private service-providing.....	33.3	33.3	33.3	33.4
Trade, transportation, and utilities.....	34.4	34.4	34.7	34.6
Wholesale trade.....	38.9	39.0	39.2	39.3
Retail trade.....	31.1	31.0	31.3	31.2
Transportation and warehousing.....	38.8	38.8	39.0	38.9
Utilities.....	42.5	42.2	42.2	41.9
Information.....	36.1	36.3	36.1	36.2
Financial activities.....	37.4	37.5	37.6	37.6
Professional and business services.....	36.0	36.0	36.0	36.0
Education and health services.....	32.9	32.9	32.9	33.0
Leisure and hospitality.....	26.0	26.1	26.1	26.2
Other services.....	31.9	31.7	31.7	31.8
<b>AVERAGE OVERTIME HOURS</b>				
Manufacturing.....	3.3	3.5	3.5	3.5
Durable goods.....	3.3	3.5	3.4	3.5
Nondurable goods.....	3.3	3.5	3.6	3.4

p Preliminary

NOTE: Data have been revised to reflect March 2016 benchmark levels and updated seasonal adjustment factors.

**ESTABLISHMENT DATA**

**Table B-3. Average hourly and weekly earnings of all employees on private nonfarm payrolls by industry sector, seasonally adjusted**

Industry	Average hourly earnings				Average weekly earnings			
	Dec. 2016	Oct. 2017	Nov. 2017 <sup>p</sup>	Dec. 2017 <sup>p</sup>	Dec. 2016	Oct. 2017	Nov. 2017 <sup>p</sup>	Dec. 2017 <sup>p</sup>
Total private.....	\$25.98	\$26.51	\$26.54	\$26.63	\$893.71	\$911.94	\$915.63	\$918.74
Goods-producing.....	27.24	27.77	27.76	27.81	1,095.05	1,121.91	1,124.28	1,126.31
Mining and logging.....	32.48	32.66	32.57	32.59	1,419.38	1,482.76	1,481.94	1,492.62
Construction.....	28.40	29.10	29.17	29.24	1,104.76	1,134.90	1,140.55	1,149.13
Manufacturing.....	26.33	26.75	26.71	26.74	1,071.63	1,094.08	1,092.44	1,090.99
Durable goods.....	27.60	28.02	28.00	28.06	1,137.12	1,162.83	1,159.20	1,161.68
Nondurable goods.....	24.13	24.56	24.49	24.45	962.79	982.40	984.50	975.56
Private service-providing.....	25.68	26.21	26.26	26.35	855.14	872.79	874.46	880.09
Trade, transportation, and utilities.....	22.54	22.90	22.96	23.04	775.38	787.76	796.71	797.18
Wholesale trade.....	29.91	30.02	30.22	30.30	1,163.50	1,170.78	1,184.62	1,190.79
Retail trade.....	17.97	18.26	18.28	18.34	558.87	566.06	572.16	572.21
Transportation and warehousing.....	23.50	24.07	24.16	24.26	911.80	933.92	942.24	943.71
Utilities.....	38.72	39.64	39.46	39.36	1,645.60	1,672.81	1,665.21	1,649.18
Information.....	37.45	38.30	38.47	38.59	1,351.95	1,390.29	1,388.77	1,396.96
Financial activities.....	32.71	33.66	33.69	33.88	1,223.35	1,262.25	1,266.74	1,273.89
Professional and business services.....	31.23	31.85	31.90	32.04	1,124.28	1,146.60	1,148.40	1,153.44
Education and health services.....	26.02	26.48	26.51	26.58	856.06	871.19	872.18	877.14
Leisure and hospitality.....	15.12	15.55	15.60	15.66	393.12	405.86	407.16	410.29
Other services.....	23.39	23.92	23.99	24.04	746.14	758.26	760.48	764.47

p Preliminary

NOTE: Data have been revised to reflect March 2016 benchmark levels and updated seasonal adjustment factors.

**ESTABLISHMENT DATA**

**Table B-4. Indexes of aggregate weekly hours and payrolls for all employees on private nonfarm payrolls by industry sector, seasonally adjusted**

[2007=100]

Industry	Index of aggregate weekly hours <sup>1</sup>					Index of aggregate weekly payrolls <sup>2</sup>				
	Dec. 2016	Oct. 2017	Nov. 2017 <sup>p</sup>	Dec. 2017 <sup>p</sup>	Percent change from: Nov. 2017 - Dec. 2017 <sup>p</sup>	Dec. 2016	Oct. 2017	Nov. 2017 <sup>p</sup>	Dec. 2017 <sup>p</sup>	Percent change from: Nov. 2017 - Dec. 2017 <sup>p</sup>
Total private.....	106.2	107.6	108.1	108.3	0.2	131.9	136.4	137.2	137.8	0.4
Goods-producing.....	90.7	92.7	93.2	93.5	0.3	111.6	116.4	117.0	117.5	0.4
Mining and logging.....	91.7	103.0	103.9	104.6	0.7	119.6	135.1	135.9	136.9	0.7
Construction.....	91.0	93.2	93.8	94.7	1.0	112.2	117.9	118.9	120.4	1.3
Manufacturing.....	90.4	91.9	92.1	92.0	-0.1	110.7	114.3	114.4	114.5	0.1
Durable goods.....	89.4	91.0	91.1	91.4	0.3	109.6	113.3	113.3	113.8	0.4
Nondurable goods.....	92.3	93.7	94.2	93.6	-0.6	113.0	116.7	117.1	116.1	-0.9
Private service-providing.....	110.6	112.0	112.2	112.6	0.4	138.0	142.6	143.1	144.2	0.8
Trade, transportation, and utilities.....	102.4	102.6	103.6	103.3	-0.3	124.2	126.4	128.1	128.1	0.0
Wholesale trade.....	99.9	101.1	101.8	102.2	0.4	124.7	126.7	128.3	129.2	0.7
Retail trade.....	100.3	99.5	100.7	100.2	-0.5	119.2	120.2	121.7	121.5	-0.2
Transportation and warehousing.....	112.1	113.5	114.3	114.0	-0.3	133.7	138.6	140.1	140.4	0.2
Utilities.....	102.4	101.0	101.0	100.1	-0.9	131.0	132.3	131.7	130.2	-1.1
Information.....	91.1	90.0	89.5	90.0	0.6	121.4	122.7	122.6	123.6	0.8
Financial activities.....	102.4	104.2	104.6	104.6	0.0	130.7	136.8	137.4	138.3	0.7
Professional and business services.....	115.6	118.2	118.5	118.6	0.1	146.3	152.5	153.1	153.9	0.5
Education and health services.....	122.9	124.8	125.1	125.6	0.4	153.8	159.0	159.5	160.6	0.7
Leisure and hospitality.....	116.8	119.2	119.3	120.0	0.6	142.5	149.5	150.2	151.6	0.9
Other services.....	104.9	105.8	106.0	106.5	0.5	134.4	138.7	139.3	140.4	0.8

<sup>1</sup> The indexes of aggregate weekly hours are calculated by dividing the current month's estimates of aggregate hours by the corresponding 2007 annual average aggregate hours. Aggregate hours estimates are the product of estimates of average weekly hours and employment.

<sup>2</sup> The indexes of aggregate weekly payrolls are calculated by dividing the current month's estimates of aggregate weekly payrolls by the corresponding 2007 annual average aggregate weekly payrolls. Aggregate payrolls estimates are the product of estimates of average hourly earnings, average weekly hours, and employment.

p Preliminary

NOTE: Data have been revised to reflect March 2016 benchmark levels and updated seasonal adjustment factors.

**ESTABLISHMENT DATA**

**Table B-5. Employment of women on nonfarm payrolls by industry sector, seasonally adjusted**

Industry	Women employees (in thousands)				Percent of all employees			
	Dec. 2016	Oct. 2017	Nov. 2017 <sup>p</sup>	Dec. 2017 <sup>p</sup>	Dec. 2016	Oct. 2017	Nov. 2017 <sup>p</sup>	Dec. 2017 <sup>p</sup>
Total nonfarm.....	72,066	72,757	72,923	72,970	49.6	49.5	49.5	49.5
Total private.....	59,275	59,926	60,083	60,125	48.2	48.1	48.1	48.1
Goods-producing.....	4,348	4,426	4,450	4,457	22.0	22.0	22.0	22.0
Mining and logging.....	99	99	101	99	14.8	13.7	13.9	13.6
Construction.....	853	881	888	893	12.6	12.7	12.8	12.8
Manufacturing.....	3,396	3,446	3,461	3,465	27.5	27.6	27.7	27.6
Durable goods.....	1,809	1,822	1,833	1,833	23.5	23.4	23.4	23.4
Nondurable goods.....	1,587	1,624	1,628	1,632	34.2	34.6	34.7	34.7
Private service-providing.....	54,927	55,500	55,633	55,668	53.2	53.1	53.1	53.1
Trade, transportation, and utilities.....	11,084	10,967	10,983	10,965	40.5	40.0	40.0	39.9
Wholesale trade.....	1,744.0	1,753.8	1,755.1	1,753.2	29.6	29.5	29.5	29.4
Retail trade.....	7,971.9	7,839.2	7,846.4	7,829.2	50.2	49.6	49.6	49.5
Transportation and warehousing.....	1,239.4	1,246.7	1,253.8	1,256.2	24.6	24.4	24.5	24.5
Utilities.....	129.1	127.0	127.3	126.4	23.2	22.9	23.0	22.9
Information.....	1,106	1,075	1,073	1,074	40.0	39.6	39.5	39.5
Financial activities.....	4,746	4,784	4,789	4,787	56.7	56.4	56.4	56.3
Professional and business services.....	9,160	9,398	9,454	9,444	44.9	45.0	45.2	45.1
Education and health services.....	17,632	17,879	17,905	17,928	77.1	77.0	76.9	76.9
Leisure and hospitality.....	8,196	8,334	8,363	8,394	52.1	52.1	52.2	52.3
Other services.....	3,003	3,063	3,066	3,076	52.7	52.9	52.9	52.9
Government.....	12,791	12,831	12,840	12,845	57.4	57.5	57.5	57.5

p Preliminary

NOTE: Data have been revised to reflect March 2016 benchmark levels and updated seasonal adjustment factors.

**ESTABLISHMENT DATA**

**Table B-6. Employment of production and nonsupervisory employees on private nonfarm payrolls by industry sector, seasonally adjusted<sup>1</sup>**

[In thousands]

Industry	Dec. 2016	Oct. 2017	Nov. 2017 <sup>p</sup>	Dec. 2017 <sup>p</sup>
Total private.....	101,372	102,735	102,910	103,033
Goods-producing.....	14,247	14,475	14,524	14,584
Mining and logging.....	468	522	527	532
Construction.....	5,123	5,189	5,208	5,239
Manufacturing.....	8,656	8,764	8,789	8,813
Durable goods.....	5,300	5,348	5,367	5,388
Nondurable goods.....	3,356	3,416	3,422	3,425
Private service-providing.....	87,125	88,260	88,386	88,449
Trade, transportation, and utilities.....	23,009	23,146	23,159	23,166
Wholesale trade.....	4,712.5	4,763.7	4,769.8	4,778.7
Retail trade.....	13,461.8	13,487.9	13,489.1	13,480.1
Transportation and warehousing.....	4,387.6	4,449.7	4,455.8	4,462.5
Utilities.....	447.4	444.8	444.5	444.7
Information.....	2,227	2,188	2,184	2,191
Financial activities.....	6,512	6,598	6,600	6,602
Professional and business services.....	16,697	17,028	17,081	17,072
Education and health services.....	20,069	20,403	20,450	20,480
Leisure and hospitality.....	13,886	14,108	14,117	14,137
Other services.....	4,725	4,789	4,795	4,801

<sup>1</sup> Data relate to production employees in mining and logging and manufacturing, construction employees in construction, and nonsupervisory employees in the service-providing industries. These groups account for approximately four-fifths of the total employment on private nonfarm payrolls.

<sup>p</sup> Preliminary

NOTE: Data have been revised to reflect March 2016 benchmark levels and updated seasonal adjustment factors.



**ESTABLISHMENT DATA**

**Table B-7. Average weekly hours and overtime of production and nonsupervisory employees on private nonfarm payrolls by industry sector, seasonally adjusted<sup>1</sup>**

Industry	Dec. 2016	Oct. 2017	Nov. 2017 <sup>p</sup>	Dec. 2017 <sup>p</sup>
<b>AVERAGE WEEKLY HOURS</b>				
Total private.....	33.6	33.7	33.8	33.8
Goods-producing.....	41.0	41.2	41.3	41.3
Mining and logging.....	45.5	46.1	46.3	46.4
Construction.....	39.2	39.5	39.7	39.8
Manufacturing.....	41.9	42.0	42.0	41.9
Durable goods.....	42.3	42.4	42.3	42.4
Nondurable goods.....	41.1	41.3	41.4	41.2
Private service-providing.....	32.3	32.5	32.5	32.5
Trade, transportation, and utilities.....	33.6	33.9	34.0	34.0
Wholesale trade.....	38.8	39.1	39.1	39.2
Retail trade.....	29.8	30.3	30.5	30.4
Transportation and warehousing.....	38.6	38.3	38.4	38.5
Utilities.....	42.9	42.6	42.5	42.3
Information.....	35.8	35.8	35.6	35.8
Financial activities.....	37.0	36.9	37.0	37.0
Professional and business services.....	35.2	35.4	35.4	35.5
Education and health services.....	32.2	32.3	32.3	32.3
Leisure and hospitality.....	24.8	24.8	24.9	24.9
Other services.....	30.9	30.7	30.8	30.8
<b>AVERAGE OVERTIME HOURS</b>				
Manufacturing.....	4.3	4.5	4.5	4.4
Durable goods.....	4.4	4.6	4.5	4.5
Nondurable goods.....	4.1	4.3	4.5	4.3

<sup>1</sup> Data relate to production employees in mining and logging and manufacturing, construction employees in construction, and nonsupervisory employees in the service-providing industries. These groups account for approximately four-fifths of the total employment on private nonfarm payrolls.

<sup>p</sup> Preliminary

NOTE: Data have been revised to reflect March 2016 benchmark levels and updated seasonal adjustment factors.

**ESTABLISHMENT DATA**

**Table B-8. Average hourly and weekly earnings of production and nonsupervisory employees on private nonfarm payrolls by industry sector, seasonally adjusted<sup>1</sup>**

Industry	Average hourly earnings				Average weekly earnings			
	Dec. 2016	Oct. 2017	Nov. 2017 <sup>p</sup>	Dec. 2017 <sup>p</sup>	Dec. 2016	Oct. 2017	Nov. 2017 <sup>p</sup>	Dec. 2017 <sup>p</sup>
Total private.....	\$21.80	\$22.20	\$22.23	\$22.30	\$732.48	\$748.14	\$751.37	\$753.74
Goods-producing.....	22.80	23.33	23.36	23.46	934.80	961.20	964.77	968.90
Mining and logging.....	27.36	27.70	27.70	27.86	1,244.88	1,276.97	1,282.51	1,292.70
Construction.....	26.23	26.90	26.95	27.04	1,028.22	1,062.55	1,069.92	1,076.19
Manufacturing.....	20.63	21.06	21.07	21.14	864.40	884.52	884.94	885.77
Durable goods.....	21.63	22.04	22.04	22.10	914.95	934.50	932.29	937.04
Nondurable goods.....	19.02	19.49	19.51	19.57	781.72	804.94	807.71	806.28
Private service-providing.....	21.59	21.96	21.99	22.06	697.36	713.70	714.68	716.95
Trade, transportation, and utilities.....	19.19	19.45	19.51	19.55	644.78	659.36	663.34	664.70
Wholesale trade.....	24.45	24.75	24.85	24.88	948.66	967.73	971.64	975.30
Retail trade.....	15.28	15.39	15.45	15.51	455.34	466.32	471.23	471.50
Transportation and warehousing.....	20.91	21.56	21.60	21.58	807.13	825.75	829.44	830.83
Utilities.....	35.81	36.14	36.09	36.05	1,536.25	1,539.56	1,533.83	1,524.92
Information.....	30.44	30.82	30.96	30.97	1,089.75	1,103.36	1,102.18	1,108.73
Financial activities.....	26.32	26.72	26.62	26.75	973.84	985.97	984.94	989.75
Professional and business services.....	25.81	26.24	26.27	26.33	908.51	928.90	929.96	934.72
Education and health services.....	22.77	23.13	23.19	23.26	733.19	747.10	749.04	751.30
Leisure and hospitality.....	13.04	13.47	13.52	13.58	323.39	334.06	336.65	338.14
Other services.....	19.57	20.18	20.23	20.25	604.71	619.53	623.08	623.70

<sup>1</sup> Data relate to production employees in mining and logging and manufacturing, construction employees in construction, and nonsupervisory employees in the service-providing industries. These groups account for approximately four-fifths of the total employment on private nonfarm payrolls.

p Preliminary

NOTE: Data have been revised to reflect March 2016 benchmark levels and updated seasonal adjustment factors.

**ESTABLISHMENT DATA**

**Table B-9. Indexes of aggregate weekly hours and payrolls for production and nonsupervisory employees on private nonfarm payrolls by industry sector, seasonally adjusted<sup>1</sup>**

[2002=100]

Industry	Index of aggregate weekly hours <sup>2</sup>					Index of aggregate weekly payrolls <sup>3</sup>				
	Dec. 2016	Oct. 2017	Nov. 2017 <sup>p</sup>	Dec. 2017 <sup>p</sup>	Percent change from: Nov. 2017 - Dec. 2017 <sup>p</sup>	Dec. 2016	Oct. 2017	Nov. 2017 <sup>p</sup>	Dec. 2017 <sup>p</sup>	Percent change from: Nov. 2017 - Dec. 2017 <sup>p</sup>
Total private.....	113.5	115.4	115.9	116.0	0.1	165.3	171.1	172.2	172.9	0.4
Goods-producing.....	89.3	91.1	91.7	92.0	0.3	124.6	130.2	131.1	132.2	0.8
Mining and logging.....	113.2	127.9	129.7	131.2	1.2	180.1	206.0	208.9	212.5	1.7
Construction.....	100.6	102.6	103.5	104.4	0.9	142.4	149.1	150.7	152.4	1.1
Manufacturing.....	83.3	84.5	84.7	84.8	0.1	112.3	116.4	116.8	117.2	0.3
Durable goods.....	84.3	85.2	85.3	85.9	0.7	113.8	117.3	117.4	118.5	0.9
Nondurable goods.....	81.3	83.1	83.5	83.1	-0.5	109.2	114.5	115.1	115.0	-0.1
Private service-providing.....	119.8	122.2	122.3	122.4	0.1	177.4	184.0	184.5	185.2	0.4
Trade, transportation, and utilities.....	107.8	109.4	109.8	109.8	0.0	147.5	151.8	152.8	153.1	0.2
Wholesale trade.....	107.7	109.7	109.8	110.3	0.5	155.1	159.9	160.8	161.7	0.6
Retail trade.....	101.5	103.4	104.1	103.7	-0.4	133.0	136.5	137.9	137.9	0.0
Transportation and warehousing.....	127.5	128.3	128.8	129.3	0.4	169.1	175.5	176.5	177.0	0.3
Utilities.....	98.2	96.9	96.6	96.2	-0.4	146.7	146.2	145.5	144.8	-0.5
Information.....	91.0	89.4	88.7	89.5	0.9	137.1	136.4	136.0	137.3	1.0
Financial activities.....	113.4	114.6	115.0	115.0	0.0	183.7	188.4	188.3	189.3	0.5
Professional and business services.....	131.7	135.1	135.5	135.8	0.2	202.3	211.0	211.8	212.8	0.5
Education and health services.....	137.8	140.5	140.8	141.0	0.1	207.1	214.5	215.6	216.5	0.4
Leisure and hospitality.....	126.1	128.2	128.8	128.9	0.1	186.8	196.0	197.7	198.8	0.6
Other services.....	102.4	103.1	103.6	103.7	0.1	146.0	151.6	152.7	153.0	0.2

<sup>1</sup> Data relate to production employees in mining and logging and manufacturing, construction employees in construction, and nonsupervisory employees in the service-providing industries. These groups account for approximately four-fifths of the total employment on private nonfarm payrolls.

<sup>2</sup> The indexes of aggregate weekly hours are calculated by dividing the current month's estimates of aggregate hours by the corresponding 2002 annual average aggregate hours. Aggregate hours estimates are the product of estimates of average weekly hours and employment.

<sup>3</sup> The indexes of aggregate weekly payrolls are calculated by dividing the current month's estimates of aggregate weekly payrolls by the corresponding 2002 annual average aggregate weekly payrolls. Aggregate payrolls estimates are the product of estimates of average hourly earnings, average weekly hours, and employment.

p Preliminary

NOTE: Data have been revised to reflect March 2016 benchmark levels and updated seasonal adjustment factors.