

FOR RELEASE AT 8:30 AM EST, WEDNESDAY, JANUARY 19, 2022

## MONTHLY NEW RESIDENTIAL CONSTRUCTION, DECEMBER 2021

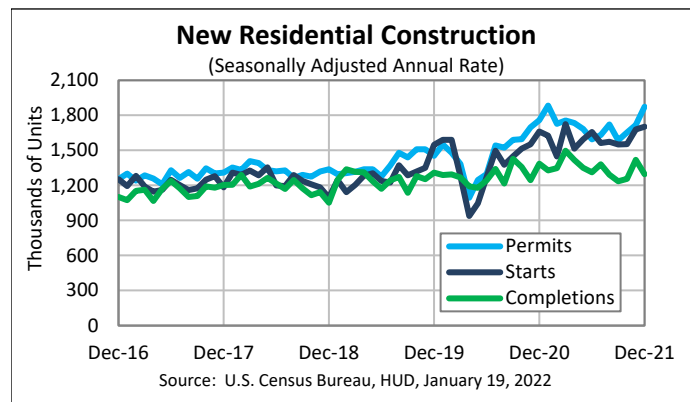
Release Number: CB22-11

**Special Notice:** Privately-owned housing units authorized by building permits in the Northeast increased 111.9% (+/- 3.8%) from November to December. In December, there was a large increase in building permits issued in Philadelphia, PA. Philadelphia enacted several real estate tax changes for residential projects permitted after December 31, 2021. State and local estimates on housing units authorized by building permits are scheduled to be released on January 26, 2022 at [www.census.gov/construction/bps/](http://www.census.gov/construction/bps/).

**Notice of methodology change:** Beginning with the January 2022 New Residential Construction release on February 17, 2022, the monthly Building Permits Survey design will change from a representative sample to a cut-off sample. This change will allow complete local and county data on new housing units authorized by permits to be published on a monthly basis going forward. For additional details on this change and the impact on New Residential Construction, see our [FAQ document](#).

**January 19, 2022** - The U.S. Census Bureau and the U.S. Department of Housing and Urban Development jointly announced the following new residential construction statistics for December 2021:

NEW RESIDENTIAL CONSTRUCTION DECEMBER 2021	
Building Permits:	1,873,000
Housing Starts:	1,702,000
Housing Completions:	1,295,000
Next Release: February 17, 2022	
Seasonally Adjusted Annual Rate (SAAR)	
Source: U.S. Census Bureau, HUD, January 19, 2022	



### Building Permits

Privately-owned housing units authorized by building permits in December were at a seasonally adjusted annual rate of 1,873,000. This is 9.1 percent ( $\pm 1.1$  percent) above the revised November rate of 1,717,000 and is 6.5 percent ( $\pm 1.7$  percent) above the December 2020 rate of 1,758,000. Single-family authorizations in December were at a rate of 1,128,000; this is 2.0 percent ( $\pm 1.3$  percent) above the revised November figure of 1,106,000. Authorizations of units in buildings with five units or more were at a rate of 675,000 in December.

An estimated 1,724,700 housing units were authorized by building permits in 2021. This is 17.2 percent ( $\pm 0.6$  percent) above the 2020 figure of 1,471,100.

### Housing Starts

Privately-owned housing starts in December were at a seasonally adjusted annual rate of 1,702,000. This is 1.4 percent ( $\pm 10.1$  percent)\* above the revised November estimate of 1,678,000 and is 2.5 percent ( $\pm 13.8$  percent)\* above the December 2020 rate of 1,661,000. Single-family housing starts in December were at a rate of 1,172,000; this is 2.3 percent ( $\pm 9.8$  percent)\* below the revised November figure of 1,199,000. The December rate for units in buildings with five units or more was 524,000.

#### Data Inquiries

Economic Indicators Division, Residential Construction Branch  
301-763-5160  
[eid.rcb.customer.service@census.gov](mailto:eid.rcb.customer.service@census.gov)

#### Media Inquiries

Public Information Office  
301-763-3030  
[pio@census.gov](mailto:pio@census.gov)



U.S. Department of Commerce  
U.S. CENSUS BUREAU  
[census.gov](http://census.gov)



An estimated 1,595,100 housing units were started in 2021. This is 15.6 percent ( $\pm 4.0$  percent) above the 2020 figure of 1,379,600.

### Housing Completions

Privately-owned housing completions in December were at a seasonally adjusted annual rate of 1,295,000. This is 8.7 percent ( $\pm 14.5$  percent)\* below the revised November estimate of 1,418,000 and is 6.6 percent ( $\pm 10.4$  percent)\* below the December 2020 rate of 1,386,000. Single-family housing completions in December were at a rate of 990,000; this is 3.9 percent ( $\pm 13.3$  percent)\* above the revised November rate of 953,000. The December rate for units in buildings with five units or more was 299,000.

An estimated 1,337,800 housing units were completed in 2021. This is 4.0 percent ( $\pm 3.2$  percent)\* above the 2020 figure of 1,286,900.

The January report is scheduled for release on February 17, 2022. View the full schedule in the Economic Briefing Room:

<[www.census.gov/economic-indicators/](http://www.census.gov/economic-indicators/)>. The full text and tables for this release can be found at

<[www.census.gov/construction/nrc/](http://www.census.gov/construction/nrc/)>.

### EXPLANATORY NOTES

In interpreting changes in the statistics in this release, note that month-to-month changes in seasonally adjusted statistics often show movements which may be irregular. It may take three months to establish an underlying trend for building permit authorizations, six months for total starts, and six months for total completions. The statistics in this release are estimated from sample surveys and are subject to sampling variability as well as nonsampling error including bias and variance from response, nonreporting, and undercoverage. Estimated relative standard errors of the most recent data are shown in the tables. Whenever a statement such as “2.5 percent ( $\pm 3.2$  percent) above” appears in the text, this indicates the range (-0.7 to +5.7 percent) in which the actual percentage change is likely to have occurred. All ranges given for percentage changes are 90 percent confidence intervals and account only for sampling variability. If a range does not contain zero, the change is statistically significant. If it does contain zero, the change is not statistically significant; that is, it is uncertain whether there was an increase or decrease. The same policies apply to the confidence intervals for percentage changes shown in the tables. On average, the preliminary seasonally adjusted estimates of total building permits, housing starts and housing completions are revised 2.1 percent or less. Explanations of confidence intervals and sampling variability can be found on our website. <[www.census.gov/construction/nrc/how\\_the\\_data\\_are\\_collected/](http://www.census.gov/construction/nrc/how_the_data_are_collected/)>

### API

The Census Bureau’s application programming interface lets developers create custom apps to reach new users and makes key demographic, socio-economic and housing statistics more accessible than ever before.

<[www.census.gov/developers/](http://www.census.gov/developers/)>

### FRED Mobile App



Receive the latest updates on the nation’s key economic indicators by downloading the FRED App <<https://fred.stlouisfed.org/fred-mobile/>> for both Apple and Android devices. FRED, the signature database of the Federal Reserve Bank of St. Louis, now incorporates the Census Bureau’s 13 economic indicators.

###

\* The 90 percent confidence interval includes zero. In such cases, there is insufficient statistical evidence to conclude that the actual change is different from zero.

#### Data Inquiries

Economic Indicators Division, Residential Construction Branch  
301-763-5160  
[eid.rcb.customer.service@census.gov](mailto:eid.rcb.customer.service@census.gov)

#### Media Inquiries

Public Information Office  
301-763-3030  
[pio@census.gov](mailto:pio@census.gov)



U.S. Department of Commerce  
U.S. CENSUS BUREAU  
[census.gov](http://census.gov)



## New Privately-Owned Housing Units Authorized in Permit-Issuing Places

(Thousands of Units. Detail may not add to total because of rounding.)

**Table 1a - Seasonally adjusted annual rate**

Period	United States				Northeast		Midwest		South		West	
	Total	1 unit	2 to 4 units	5 units or more	Total	1 unit	Total	1 unit	Total	1 unit	Total	1 unit
<b>2020</b>												
December	1,758	1,233	49	476	155	71	259	168	898	710	446	284
<b>2021</b>												
January	1,883	1,268	55	560	195	79	245	175	956	711	487	303
February	1,726	1,145	48	533	170	78	250	172	863	609	443	286
March	1,755	1,194	58	503	155	78	253	174	908	661	439	281
April	1,733	1,148	50	535	168	76	228	159	918	649	419	264
May	1,683	1,134	58	491	156	71	223	138	898	678	406	247
June	1,594	1,066	49	479	135	64	205	129	878	641	376	232
July	1,630	1,048	54	528	130	58	213	126	857	629	430	235
August	1,721	1,050	41	630	155	67	217	126	907	608	442	249
September	1,586	1,041	49	496	124	55	216	126	849	619	397	241
October	1,653	1,074	51	528	129	63	234	133	859	639	431	239
November (r)	1,717	1,106	48	563	143	62	219	141	906	647	449	256
<b>December (p)</b>	<b>1,873</b>	<b>1,128</b>	<b>70</b>	<b>675</b>	<b>303</b>	<b>82</b>	<b>267</b>	<b>158</b>	<b>899</b>	<b>650</b>	<b>404</b>	<b>238</b>
Average RSE (%) <sup>1</sup>	2	2	4	2	3	4	4	4	2	2	2	3
Percent Change <sup>2</sup>												
<b>Dec. 2021 from Nov. 2021</b>	<b>9.1%</b>	<b>2.0%</b>	<b>45.8%</b>	<b>19.9%</b>	<b>111.9%</b>	<b>32.3%</b>	<b>21.9%</b>	<b>12.1%</b>	<b>-0.8%</b>	<b>0.5%</b>	<b>-10.0%</b>	<b>-7.0%</b>
90 percent confidence interval <sup>3</sup>	± 1.1	± 1.3	± 13.8	± 3.8	± 3.8	± 7.9	± 7.2	± 4.5	± 0.6	± 1.7	± 2.0	± 2.1
<b>Dec. 2021 from Dec. 2020</b>	<b>6.5%</b>	<b>-8.5%</b>	<b>42.9%</b>	<b>41.8%</b>	<b>95.5%</b>	<b>15.5%</b>	<b>3.1%</b>	<b>-6.0%</b>	<b>0.1%</b>	<b>-8.5%</b>	<b>-9.4%</b>	<b>-16.2%</b>
90 percent confidence interval <sup>3</sup>	± 1.7	± 1.6	± 12.4	± 2.7	± 11.9	± 17.1	± 4.9	± 6.1	± 1.0	± 1.1	± 2.9	± 3.1

**Table 1b - Not seasonally adjusted**

Period	United States				Northeast		Midwest		South		West	
	Total	1 unit	2 to 4 units	5 units or more	Total	1 unit	Total	1 unit	Total	1 unit	Total	1 unit
2020 Annual	1,471.1	979.4	47.2	444.5	134.8	56.3	202.1	128.0	776.3	568.5	358.0	226.7
2021 Annual (p)	1,724.7	1,110.6	52.1	562.1	164.9	67.1	231.1	144.1	902.6	645.1	426.1	254.3
RSE (%)	2	2	2	1	2	4	3	4	1	2	2	2
<b>Year to year percent change<sup>2</sup></b>	<b>17.2%</b>	<b>13.4%</b>	<b>10.4%</b>	<b>26.4%</b>	<b>22.4%</b>	<b>19.3%</b>	<b>14.4%</b>	<b>12.6%</b>	<b>16.3%</b>	<b>13.5%</b>	<b>19.0%</b>	<b>12.2%</b>
90 percent confidence interval <sup>3</sup>	± 0.6	± 0.6	± 3.6	± 1.4	± 2.2	± 3.3	± 1.7	± 1.3	± 0.6	± 0.4	± 2.3	± 2.4
<b>2020</b>												
December	137.0	88.6	3.7	44.7	13.1	5.0	16.7	10.1	68.2	52.1	39.0	21.4
<b>2021</b>												
January	128.8	83.9	3.6	41.3	13.4	5.0	12.6	8.3	70.4	51.3	32.4	19.3
February	120.1	81.1	3.4	35.6	10.8	4.8	13.4	9.1	64.9	46.9	31.0	20.3
March	157.6	110.8	5.2	41.5	13.0	6.5	21.0	15.0	84.8	63.3	38.8	26.0
April	157.9	107.8	4.4	45.7	13.6	6.8	22.4	15.9	83.0	60.1	38.8	25.1
May	142.3	99.1	4.6	38.5	13.1	6.1	20.4	13.1	74.9	58.0	33.8	21.9
June	154.5	105.1	4.7	44.7	13.5	6.4	20.4	13.6	83.3	61.2	37.3	23.9
July	139.2	91.9	4.6	42.7	11.4	5.2	18.7	11.7	72.7	53.9	36.3	21.1
August	154.6	93.5	3.9	57.2	13.3	6.1	21.2	12.0	82.0	53.3	38.1	22.2
September	134.6	87.4	4.2	43.0	10.4	5.1	20.8	12.1	70.9	50.3	32.5	19.9
October	136.4	85.7	4.6	46.1	10.5	5.5	22.6	11.9	68.5	49.7	34.8	18.5
November (r)	131.8	80.4	3.9	47.5	12.5	5.0	17.4	10.6	67.3	46.6	34.6	18.2
<b>December (p)</b>	<b>152.0</b>	<b>81.3</b>	<b>5.4</b>	<b>65.2</b>	<b>25.8</b>	<b>5.8</b>	<b>18.2</b>	<b>9.8</b>	<b>71.6</b>	<b>47.7</b>	<b>36.4</b>	<b>18.0</b>
Average RSE (%) <sup>1</sup>	2	2	4	2	3	4	4	4	2	2	2	3

p Preliminary

r Revised

S Does not meet publication standards because tests for identifiable and stable seasonality do not meet reliability standards

X Not applicable

<sup>1</sup> Average relative standard error for the latest 6-month period

<sup>2</sup> Computed using unrounded data

<sup>3</sup> If the 90 percent confidence interval includes zero, there is insufficient evidence to conclude that the actual change is different from zero

Note: Year-to-date permits estimates reflect revisions not distributed to months.

Source: U.S. Census Bureau and U.S. Department of Housing and Urban Development, New Residential Construction, January 19, 2022.

Additional information on the survey methodology may be found at <[www.census.gov/construction/nrc/how\\_the\\_data\\_are\\_collected/](http://www.census.gov/construction/nrc/how_the_data_are_collected/)>.

## New Privately-Owned Housing Units Authorized, but Not Started, at End of Period

(Thousands of Units. Detail may not add to total because of rounding.)

**Table 2a - Seasonally adjusted**

Period	United States				Northeast		Midwest		South		West	
	Total	1 unit	2 to 4 units	5 units or more	Total	1 unit	Total	1 unit	Total	1 unit	Total	1 unit
<b>2020</b>												
December .....	187	104	S	80	23	12	13	8	98	60	53	24
<b>2021</b>												
January .....	204	114	S	87	23	12	13	9	111	66	57	27
February .....	217	122	S	92	25	12	16	12	118	71	58	27
March .....	229	130	S	97	24	12	18	13	126	76	61	29
April .....	242	139	S	101	24	12	22	14	135	82	61	31
May .....	246	146	S	97	23	12	21	12	140	90	62	32
June .....	245	148	S	94	22	11	21	13	141	93	61	31
July .....	247	145	S	99	23	11	22	12	140	92	62	30
August .....	261	149	S	109	23	12	27	13	144	90	67	34
September .....	257	146	S	108	23	11	28	13	143	90	63	32
October (r) .....	269	154	S	112	25	12	29	14	150	95	65	33
November (r) .....	267	149	S	116	25	12	28	16	149	89	65	32
<b>December (p) .....</b>	<b>270</b>	<b>144</b>	<b>S</b>	<b>122</b>	<b>33</b>	<b>13</b>	<b>27</b>	<b>13</b>	<b>145</b>	<b>87</b>	<b>65</b>	<b>31</b>
Average RSE (%) <sup>1</sup> .....	6	6	X	10	19	24	14	14	8	8	9	10
Percent Change <sup>2</sup>												
<b>Dec. 2021 from Nov. 2021 .....</b>	<b>1.1%</b>	<b>-3.4%</b>	<b>S</b>	<b>5.2%</b>	<b>32.0%</b>	<b>8.3%</b>	<b>-3.6%</b>	<b>-18.8%</b>	<b>-2.7%</b>	<b>-2.2%</b>	<b>0.0%</b>	<b>-3.1%</b>
90 percent confidence interval <sup>3</sup> .....	± 2.8	± 3.2	X	± 5.2	± 13.8	± 8.0	± 7.6	± 7.6	± 4.1	± 4.3	± 5.9	± 9.2
<b>Dec. 2021 from Dec. 2020 .....</b>	<b>44.4%</b>	<b>38.5%</b>	<b>S</b>	<b>52.5%</b>	<b>43.5%</b>	<b>8.3%</b>	<b>107.7%</b>	<b>62.5%</b>	<b>48.0%</b>	<b>45.0%</b>	<b>22.6%</b>	<b>29.2%</b>
90 percent confidence interval <sup>3</sup> .....	± 15.1	± 12.6	X	± 25.6	± 40.0	± 33.9	± 63.0	± 39.2	± 17.6	± 15.9	± 20.9	± 26.2

**Table 2b - Not seasonally adjusted**

Period	United States				Northeast		Midwest		South		West	
	Total	1 unit	2 to 4 units	5 units or more	Total	1 unit	Total	1 unit	Total	1 unit	Total	1 unit
<b>2020</b>												
December .....	187.9	101.0	3.2	83.6	23.0	11.1	11.6	7.0	99.1	58.9	54.2	24.1
<b>2021</b>												
January .....	201.9	109.7	3.0	89.3	22.8	11.0	12.3	7.7	109.1	64.2	57.7	26.8
February .....	215.7	119.1	3.1	93.6	25.8	12.4	16.2	11.1	116.4	68.6	57.3	27.0
March .....	236.3	135.9	2.3	98.2	24.7	12.3	21.5	14.3	127.7	78.7	62.5	30.7
April .....	253.0	148.5	2.5	102.0	23.8	12.6	26.5	17.4	138.1	85.1	64.5	33.4
May .....	250.5	149.7	2.6	98.1	24.2	12.5	21.3	13.9	141.4	91.3	63.5	32.0
June .....	254.4	155.5	2.7	96.2	24.0	11.4	22.7	14.8	145.4	96.3	62.3	33.0
July .....	247.2	148.5	2.6	96.0	24.3	11.8	21.5	12.1	139.9	94.1	61.4	30.6
August .....	258.1	149.0	2.7	106.3	23.4	11.6	26.7	12.6	142.6	91.2	65.3	33.6
September .....	254.0	145.2	2.6	106.3	21.9	10.6	27.2	12.3	144.4	90.5	60.6	31.8
October (r) .....	259.4	147.4	2.6	109.4	22.0	11.4	29.0	12.9	146.8	92.0	61.6	31.1
November (r) .....	253.0	139.4	2.4	111.2	22.9	11.8	27.1	13.3	141.0	85.4	62.0	28.9
<b>December (p) .....</b>	<b>273.3</b>	<b>140.9</b>	<b>3.6</b>	<b>128.8</b>	<b>33.7</b>	<b>12.6</b>	<b>26.2</b>	<b>11.8</b>	<b>145.3</b>	<b>84.7</b>	<b>68.0</b>	<b>31.6</b>
Average RSE (%) <sup>1</sup> .....	6	6	23	10	19	24	14	14	8	8	9	10

p Preliminary

r Revised

S Does not meet publication standards because tests for identifiable and stable seasonality do not meet reliability standards

X Not applicable

<sup>1</sup> Average relative standard error for the latest 6-month period

<sup>2</sup> Computed using unrounded data

<sup>3</sup> See the Explanatory Notes in the accompanying text for an explanation of 90 percent confidence intervals

Note: These data represent the number of housing units authorized in all months up to and including the last day of the reporting period and not started as of that date without regard to the months of original permit issuance. Cancelled, abandoned, expired, and revoked permits are excluded.

Source: U.S. Census Bureau and U.S. Department of Housing and Urban Development, New Residential Construction, January 19, 2022.

Additional information on the survey methodology may be found at <[www.census.gov/construction/nrc/how\\_the\\_data\\_are\\_collected/](http://www.census.gov/construction/nrc/how_the_data_are_collected/)>.

## New Privately-Owned Housing Units Started

(Thousands of Units. Detail may not add to total because of rounding.)

**Table 3a - Seasonally adjusted annual rate**

Period	United States				Northeast		Midwest		South		West	
	Total	1 unit	2 to 4 units	5 units or more	Total	1 unit	Total	1 unit	Total	1 unit	Total	1 unit
<b>2020</b>												
December .....	1,661	1,315	S	336	136	84	246	219	837	692	442	320
<b>2021</b>												
January .....	1,625	1,143	S	469	204	79	209	163	811	642	401	259
February .....	1,447	1,069	S	365	109	69	136	108	771	581	431	311
March .....	1,725	1,255	S	448	165	95	288	217	891	676	381	267
April .....	1,514	1,061	S	439	158	74	180	144	782	582	394	261
May .....	1,594	1,098	S	486	139	63	263	164	810	596	382	275
June .....	1,657	1,161	S	485	147	79	198	131	871	667	441	284
July .....	1,562	1,112	S	439	69	42	183	145	900	668	410	257
August .....	1,573	1,088	S	478	166	67	196	129	884	674	327	218
September .....	1,550	1,089	S	452	127	69	203	132	804	624	416	264
October (r) .....	1,552	1,074	S	468	114	54	213	130	814	623	411	267
November (r) .....	1,678	1,199	S	461	114	63	211	132	933	717	420	287
<b>December (p) .....</b>	<b>1,702</b>	<b>1,172</b>	<b>S</b>	<b>524</b>	<b>137</b>	<b>70</b>	<b>288</b>	<b>199</b>	<b>915</b>	<b>658</b>	<b>362</b>	<b>245</b>
Average RSE (%) <sup>1</sup> .....	6	5	X	14	16	18	11	7	8	8	11	11
Percent Change <sup>2</sup>												
<b>Dec. 2021 from Nov. 2021 .....</b>	<b>1.4%</b>	<b>-2.3%</b>	<b>S</b>	<b>13.7%</b>	<b>20.2%</b>	<b>11.1%</b>	<b>36.5%</b>	<b>50.8%</b>	<b>-1.9%</b>	<b>-8.2%</b>	<b>-13.8%</b>	<b>-14.6%</b>
90 percent confidence interval <sup>3</sup> .....	± 10.1	± 9.8	X	± 21.4	± 28.1	± 30.2	± 28.7	± 21.3	± 16.8	± 14.9	± 14.0	± 16.0
<b>Dec. 2021 from Dec. 2020 .....</b>	<b>2.5%</b>	<b>-10.9%</b>	<b>S</b>	<b>56.0%</b>	<b>0.7%</b>	<b>-16.7%</b>	<b>17.1%</b>	<b>-9.1%</b>	<b>9.3%</b>	<b>-4.9%</b>	<b>-18.1%</b>	<b>-23.4%</b>
90 percent confidence interval <sup>3</sup> .....	± 13.8	± 9.0	X	± 58.5	± 38.9	± 38.2	± 30.3	± 23.4	± 16.1	± 11.7	± 20.9	± 17.3

**Table 3b - Not seasonally adjusted**

Period	United States				Northeast		Midwest		South		West	
	Total	1 unit	2 to 4 units	5 units or more	Total	1 unit	Total	1 unit	Total	1 unit	Total	1 unit
2020 Annual .....	1,379.6	990.5	12.3	376.8	111.5	60.2	191.6	135.6	735.5	553.1	341.0	241.5
2021 Annual (p) .....	1,595.1	1,123.1	12.0	460.1	136.2	67.6	212.5	147.5	847.9	641.6	398.5	266.3
RSE (%) .....	2	2	19	7	7	7	2	2	2	3	4	3
<b>Year to year percent change<sup>2</sup> .....</b>	<b>15.6%</b>	<b>13.4%</b>	<b>-2.8%</b>	<b>22.1%</b>	<b>22.2%</b>	<b>12.3%</b>	<b>10.9%</b>	<b>8.8%</b>	<b>15.3%</b>	<b>16.0%</b>	<b>16.9%</b>	<b>10.3%</b>
90 percent confidence interval <sup>3</sup> .....	± 4.0	± 4.2	± 39.1	± 8.5	± 15.8	± 12.1	± 6.0	± 4.3	± 5.3	± 6.8	± 6.4	± 5.5
<b>2020</b>												
December .....	115.1	89.7	0.7	24.6	9.5	5.7	14.7	12.7	60.4	49.8	30.4	21.5
<b>2021</b>												
January .....	115.2	77.9	1.0	36.2	14.7	5.0	11.3	7.8	60.7	47.6	28.5	17.5
February .....	102.1	74.6	1.0	26.5	6.3	3.4	7.1	5.1	57.6	43.8	31.1	22.4
March .....	140.6	102.8	1.7	36.0	12.8	7.2	20.4	14.7	75.3	58.0	32.1	22.9
April .....	135.5	97.2	1.2	37.0	13.8	6.7	16.1	13.1	70.1	53.2	35.5	24.3
May .....	145.7	100.5	0.9	44.3	12.5	5.6	26.6	17.6	71.9	52.5	34.6	24.9
June .....	154.3	111.6	1.0	41.7	14.4	8.5	19.6	13.8	79.5	61.9	40.9	27.4
July .....	143.9	104.6	1.0	38.3	6.7	4.3	18.5	15.1	81.3	61.0	37.6	24.1
August .....	140.0	98.0	0.6	41.4	14.6	6.1	18.1	12.3	78.1	59.9	29.2	19.8
September .....	135.2	93.5	0.9	40.8	11.6	6.4	19.0	12.6	68.3	52.0	36.2	22.6
October (r) .....	133.6	91.6	0.9	41.1	10.0	4.8	20.2	13.0	67.8	51.1	35.5	22.8
November (r) .....	128.9	89.5	1.4	37.9	9.1	4.9	16.6	10.1	70.7	52.9	32.5	21.5
<b>December (p) .....</b>	<b>120.3</b>	<b>81.0</b>	<b>0.4</b>	<b>38.9</b>	<b>9.8</b>	<b>4.8</b>	<b>18.9</b>	<b>12.3</b>	<b>66.7</b>	<b>47.7</b>	<b>24.9</b>	<b>16.2</b>
Average RSE (%) <sup>1</sup> .....	6	5	46	14	16	18	11	7	8	8	11	11

p Preliminary

r Revised

S Does not meet publication standards because tests for identifiable and stable seasonality do not meet reliability standards

X Not applicable

<sup>1</sup> Average relative standard error for the latest 6-month period

<sup>2</sup> Computed using unrounded data

<sup>3</sup> See the Explanatory Notes in the accompanying text for an explanation of 90 percent confidence intervals

Source: U.S. Census Bureau and U.S. Department of Housing and Urban Development, New Residential Construction, January 19, 2022. Additional information on the survey methodology may be found at [www.census.gov/construction/nrc/how\\_the\\_data\\_are\\_collected/](http://www.census.gov/construction/nrc/how_the_data_are_collected/).

## New Privately-Owned Housing Units Under Construction at End of Period

(Thousands of Units. Detail may not add to total because of rounding.)

**Table 4a - Seasonally adjusted**

Period	United States				Northeast		Midwest		South		West	
	Total	1 unit	2 to 4 units	5 units or more	Total	1 unit	Total	1 unit	Total	1 unit	Total	1 unit
<b>2020</b>												
December .....	1,264	609	S	645	178	57	163	86	576	303	347	163
<b>2021</b>												
January .....	1,284	619	S	654	183	58	165	87	581	308	355	166
February .....	1,289	623	S	655	181	58	163	85	581	309	364	171
March .....	1,307	637	S	658	186	58	165	91	589	313	367	175
April .....	1,324	646	S	665	194	60	167	93	593	318	370	175
May .....	1,339	658	S	668	197	60	172	97	595	322	375	179
June .....	1,371	678	S	680	201	61	175	96	615	339	380	182
July .....	1,384	693	S	678	198	60	174	98	629	351	383	184
August .....	1,408	706	S	689	203	61	174	98	644	364	387	183
September .....	1,434	719	S	702	203	62	178	100	656	370	397	187
October (r) .....	1,464	732	S	720	204	62	182	101	669	379	409	190
November (r) .....	1,485	752	S	720	202	63	183	101	687	396	413	192
<b>December (p) .....</b>	<b>1,519</b>	<b>769</b>	<b>S</b>	<b>737</b>	<b>201</b>	<b>62</b>	<b>194</b>	<b>107</b>	<b>703</b>	<b>406</b>	<b>421</b>	<b>194</b>
Average RSE (%) <sup>1</sup> .....	3	3	X	6	6	6	3	4	4	5	6	5
Percent Change <sup>2</sup>												
<b>Dec. 2021 from Nov. 2021 .....</b>	<b>2.3%</b>	<b>2.3%</b>	<b>S</b>	<b>2.4%</b>	<b>-0.5%</b>	<b>-1.6%</b>	<b>6.0%</b>	<b>5.9%</b>	<b>2.3%</b>	<b>2.5%</b>	<b>1.9%</b>	<b>1.0%</b>
90 percent confidence interval <sup>3</sup> .....	± 0.8	± 1.2	X	± 0.9	± 1.2	± 2.0	± 2.1	± 2.4	± 1.5	± 1.7	± 1.2	± 2.7
<b>Dec. 2021 from Dec. 2020 .....</b>	<b>20.2%</b>	<b>26.3%</b>	<b>S</b>	<b>14.3%</b>	<b>12.9%</b>	<b>8.8%</b>	<b>19.0%</b>	<b>24.4%</b>	<b>22.0%</b>	<b>34.0%</b>	<b>21.3%</b>	<b>19.0%</b>
90 percent confidence interval <sup>3</sup> .....	± 3.4	± 4.7	X	± 5.9	± 6.3	± 9.4	± 8.3	± 7.7	± 6.7	± 9.3	± 6.3	± 8.7

**Table 4b - Not seasonally adjusted**

Period	United States				Northeast		Midwest		South		West	
	Total	1 unit	2 to 4 units	5 units or more	Total	1 unit	Total	1 unit	Total	1 unit	Total	1 unit
<b>2020</b>												
December .....	1,240.3	590.5	10.1	639.8	177.0	56.8	162.0	85.5	560.6	289.8	340.8	158.4
<b>2021</b>												
January .....	1,263.8	597.3	10.7	655.8	181.9	56.6	161.3	83.5	570.4	296.6	350.1	160.6
February .....	1,270.3	600.4	10.9	658.9	178.9	55.4	157.0	78.6	574.7	300.8	359.7	165.6
March .....	1,289.9	619.0	12.0	658.9	184.3	56.1	158.1	84.1	584.7	307.9	362.9	170.9
April .....	1,315.5	636.9	13.1	665.5	192.5	58.8	161.5	87.4	591.7	316.2	369.8	174.5
May .....	1,343.1	657.9	13.1	672.1	197.9	59.8	170.6	95.1	597.4	322.7	377.3	180.4
June .....	1,382.3	687.6	13.5	681.2	202.2	61.9	176.2	96.8	620.4	343.9	383.4	185.1
July .....	1,405.1	714.2	13.2	677.6	199.7	61.2	177.5	101.9	639.2	361.6	388.6	189.5
August .....	1,427.7	729.3	12.7	685.7	203.6	62.7	180.2	104.2	653.6	374.7	390.3	187.7
September .....	1,457.2	741.9	12.8	702.4	205.2	63.8	183.7	105.8	666.3	380.7	402.1	191.6
October (r) .....	1,478.6	750.0	12.3	716.3	204.7	63.5	187.8	106.8	675.9	387.3	410.2	192.4
November (r) .....	1,495.5	760.7	13.0	721.7	203.6	64.0	187.1	104.9	689.3	397.7	415.5	194.1
<b>December (p) .....</b>	<b>1,491.8</b>	<b>748.8</b>	<b>13.0</b>	<b>730.0</b>	<b>199.7</b>	<b>61.8</b>	<b>193.0</b>	<b>107.0</b>	<b>686.0</b>	<b>391.9</b>	<b>413.0</b>	<b>188.0</b>
Average RSE (%) <sup>1</sup> .....	3	3	20	6	6	6	3	4	4	5	6	5

p Preliminary

r Revised

S Does not meet publication standards because tests for identifiable and stable seasonality do not meet reliability standards

X Not applicable

<sup>1</sup> Average relative standard error for the latest 6-month period

<sup>2</sup> Computed using unrounded data

<sup>3</sup> See the Explanatory Notes in the accompanying text for an explanation of 90 percent confidence intervals

Source: U.S. Census Bureau and U.S. Department of Housing and Urban Development, New Residential Construction, January 19, 2022.

Additional information on the survey methodology may be found at <[www.census.gov/construction/nrc/how\\_the\\_data\\_are\\_collected/](http://www.census.gov/construction/nrc/how_the_data_are_collected/)>.

## New Privately-Owned Housing Units Completed

(Thousands of Units. Detail may not add to total because of rounding.)

**Table 5a - Seasonally adjusted annual rate**

Period	United States				Northeast		Midwest		South		West	
	Total	1 unit	2 to 4 units	5 units or more	Total	1 unit	Total	1 unit	Total	1 unit	Total	1 unit
<b>2020</b>												
December .....	1,386	958	S	415	124	65	190	139	732	540	340	214
<b>2021</b>												
January .....	1,328	1,012	S	311	108	71	175	146	740	568	305	227
February .....	1,347	1,017	S	320	121	63	188	152	723	563	315	239
March .....	1,497	1,034	S	457	134	85	214	125	814	596	335	228
April .....	1,417	994	S	421	99	49	176	119	791	565	351	261
May .....	1,350	966	S	379	72	52	191	121	780	565	307	228
June .....	1,312	922	S	382	109	68	171	133	700	487	332	234
July .....	1,380	945	S	422	107	56	189	122	711	513	373	254
August .....	1,291	945	S	340	132	61	165	113	688	536	306	235
September .....	1,235	944	S	284	100	55	198	128	681	549	256	212
October (r) .....	1,255	933	S	308	115	51	172	121	643	514	325	247
November (r) .....	1,418	953	S	455	113	51	218	135	744	525	343	242
<b>December (p) .....</b>	<b>1,295</b>	<b>990</b>	<b>S</b>	<b>299</b>	<b>118</b>	<b>70</b>	<b>167</b>	<b>103</b>	<b>721</b>	<b>573</b>	<b>289</b>	<b>244</b>
Average RSE (%) <sup>1</sup> .....	6	5	X	16	24	20	14	14	8	8	10	9
Percent Change <sup>2</sup>												
<b>Dec. 2021 from Nov. 2021 .....</b>	<b>-8.7%</b>	<b>3.9%</b>	<b>S</b>	<b>-34.3%</b>	<b>4.4%</b>	<b>37.3%</b>	<b>-23.4%</b>	<b>-23.7%</b>	<b>-3.1%</b>	<b>9.1%</b>	<b>-15.7%</b>	<b>0.8%</b>
90 percent confidence interval <sup>3</sup> .....	± 14.5	± 13.3	X	± 27.7	± 58.3	± 46.7	± 38.2	± 44.0	± 21.8	± 22.2	± 23.5	± 31.4
<b>Dec. 2021 from Dec. 2020 .....</b>	<b>-6.6%</b>	<b>3.3%</b>	<b>S</b>	<b>-28.0%</b>	<b>-4.8%</b>	<b>7.7%</b>	<b>-12.1%</b>	<b>-25.9%</b>	<b>-1.5%</b>	<b>6.1%</b>	<b>-15.0%</b>	<b>14.0%</b>
90 percent confidence interval <sup>3</sup> .....	± 10.4	± 11.7	X	± 16.4	± 29.9	± 48.8	± 23.9	± 16.9	± 17.4	± 19.8	± 11.5	± 17.6

**Table 5b - Not seasonally adjusted**

Period	United States				Northeast		Midwest		South		West	
	Total	1 unit	2 to 4 units	5 units or more	Total	1 unit	Total	1 unit	Total	1 unit	Total	1 unit
2020 Annual .....	1,286.9	911.7	10.5	364.7	95.2	56.7	182.5	125.6	678.4	506.1	330.9	223.4
2021 Annual (p) .....	1,337.8	966.9	7.7	363.2	110.5	60.6	183.7	124.9	724.0	543.8	319.5	237.5
RSE (%) .....	2	1	22	6	8	8	3	3	3	2	4	3
<b>Year to year percent change<sup>2</sup> .....</b>	<b>4.0%</b>	<b>6.1%</b>	<b>-26.3%</b>	<b>-0.4%</b>	<b>16.1%</b>	<b>6.9%</b>	<b>0.7%</b>	<b>-0.5%</b>	<b>6.7%</b>	<b>7.5%</b>	<b>-3.4%</b>	<b>6.3%</b>
90 percent confidence interval <sup>3</sup> .....	± 3.2	± 3.4	± 22.8	± 5.6	± 16.2	± 13.7	± 6.9	± 7.1	± 4.6	± 4.3	± 8.0	± 8.0
<b>2020</b>												
December .....	130.5	92.0	1.2	37.3	11.5	6.2	17.8	13.2	69.2	51.9	32.1	20.8
<b>2021</b>												
January .....	93.7	72.2	0.3	21.1	7.9	5.4	11.9	10.0	53.4	41.8	20.5	15.1
February .....	94.6	72.5	0.6	21.5	8.0	4.1	12.6	10.2	51.7	41.0	22.4	17.3
March .....	120.5	83.9	0.5	36.1	9.9	6.1	16.4	9.4	67.7	50.4	26.4	17.9
April .....	112.4	78.9	0.2	33.3	7.4	3.4	14.1	9.6	63.8	45.9	27.1	20.0
May .....	112.0	80.3	0.4	31.4	5.7	4.0	15.4	9.7	65.3	47.5	25.6	19.1
June .....	115.9	80.9	0.7	34.4	10.3	6.5	15.2	11.8	59.9	40.8	30.6	21.8
July .....	121.4	78.5	1.3	41.5	9.9	4.9	16.4	9.8	62.7	43.2	32.3	20.6
August .....	117.6	83.0	0.6	34.0	12.2	5.1	15.2	10.0	62.2	47.0	28.0	20.9
September .....	103.0	79.0	0.6	23.4	8.6	4.8	17.1	11.3	55.1	44.3	22.2	18.6
October (r) .....	110.8	83.0	1.2	26.6	10.3	4.8	16.1	11.7	54.6	43.5	29.8	23.0
November (r) .....	112.7	78.7	0.8	33.3	9.2	4.7	18.0	11.9	58.6	42.6	26.9	19.5
<b>December (p) .....</b>	<b>123.0</b>	<b>95.9</b>	<b>0.5</b>	<b>26.7</b>	<b>11.1</b>	<b>6.8</b>	<b>15.1</b>	<b>9.4</b>	<b>69.1</b>	<b>56.0</b>	<b>27.7</b>	<b>23.8</b>
Average RSE (%) <sup>1</sup> .....	6	5	56	16	24	20	14	14	8	8	10	9

p Preliminary

r Revised

S Does not meet publication standards because tests for identifiable and stable seasonality do not meet reliability standards

X Not applicable

<sup>1</sup> Average relative standard error for the latest 6-month period

<sup>2</sup> Computed using unrounded data

<sup>3</sup> See the Explanatory Notes in the accompanying text for an explanation of 90 percent confidence intervals

Source: U.S. Census Bureau and U.S. Department of Housing and Urban Development, New Residential Construction, January 19, 2022. Additional information on the survey methodology may be found at [www.census.gov/construction/nrc/how\\_the\\_data\\_are\\_collected/](http://www.census.gov/construction/nrc/how_the_data_are_collected/).