



Transmission of material in this release is embargoed until
8:30 a.m. (ET) Thursday, May 14, 2026

USDL-26-0724

Technical information: (202) 691-7101 • MXPinfo@bls.gov • www.bls.gov/mxp

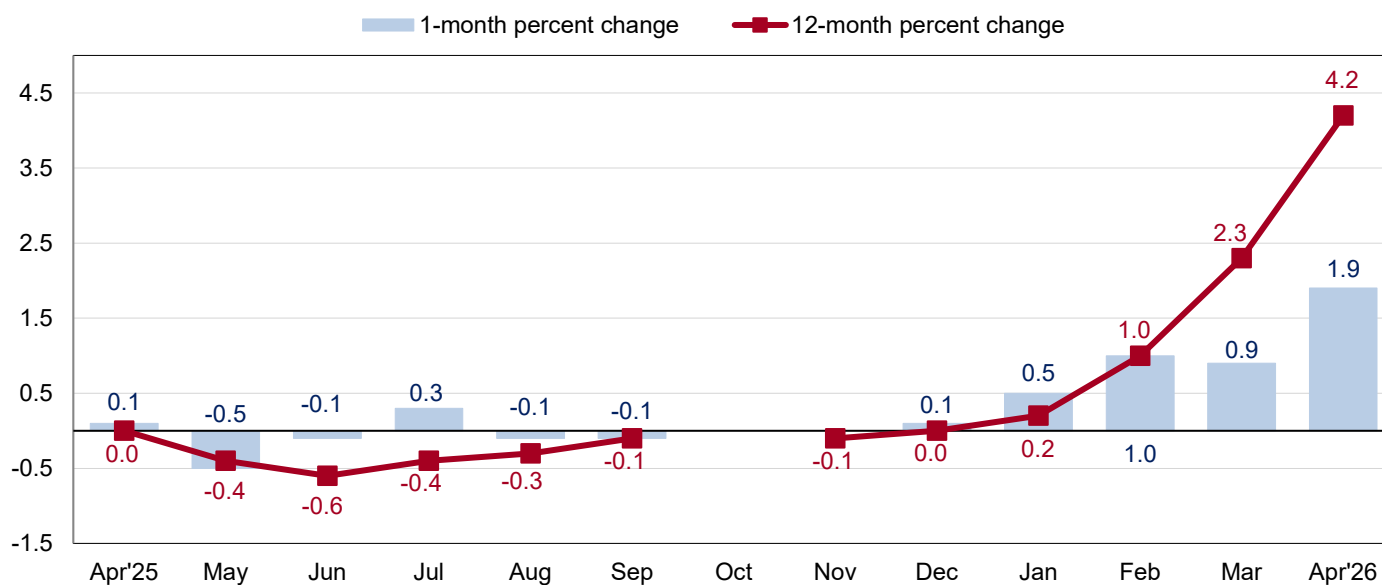
Media contact: (202) 691-5902 • PressOffice@bls.gov

U.S. IMPORT AND EXPORT PRICE INDEXES - APRIL 2026

U.S. import prices increased 1.9 percent in April, the U.S. Bureau of Labor Statistics reported today, following a 0.9-percent rise in March. Higher prices for fuel imports and nonfuel imports drove the advance in April. Prices for U.S. exports advanced 3.3 percent in April, after rising 1.5 percent the previous month.

Imports

Chart 1. One-month and 12-month percent changes in the Import Price Index: April 2025 – April 2026



Note: The Oct and Nov 2025 data values are not available due to the 2025 lapse in appropriations.

U.S. import prices advanced 1.9 percent in April following an increase of 0.9 percent in March and a rise of 1.0 percent in February. Prices for U.S. imports increased 4.2 percent from April 2025 to April 2026. The 12-month rise in U.S. import prices was the largest over-the-year advance since the index increased 4.2 percent for the year ended October 2022. (See All commodities in table 1.)

Fuel Imports: Import prices for fuels and lubricants increased 16.3 percent in April following an advance of 10.0 percent in March. The April increase was the largest monthly advance since the index rose 17.8 percent in March 2022. Higher prices for import petroleum more than offset lower prices for import natural gas. In April, prices for import petroleum and petroleum products increased 19.0 percent. In contrast, import natural gas prices declined over the same period, falling 22.1 percent. Prices for import fuels and lubricants advanced 20.0 percent from April 2025 to April 2026. Over the past 12 months, the price index for import petroleum and petroleum products rose 22.0 percent and prices for import natural gas ticked up 0.1 percent.

All Imports Excluding Fuel: Prices for nonfuel imports increased 0.8 percent in April following an advance of 0.2 percent in March. Higher prices for capital goods; nonfuel industrial supplies and materials; consumer goods, excluding automobiles; and foods, feeds, and beverages more than offset lower prices for automotive vehicles, parts and engines. Nonfuel import prices increased 2.9 percent from April 2025 to April 2026. The 12-month advance in nonfuel import prices was the largest over-the-year rise since the index increased 2.9 for the year ended October 2022. Higher prices for capital goods; nonfuel industrial supplies and materials; and consumer goods, excluding automobiles more than offset lower prices for automotive vehicles, parts and engines as well as for foods, feeds, and beverages from April 2025 to April 2026.

Foods, Feeds, and Beverages: Import foods, feeds, and beverages prices rose 0.9 percent in April following an increase of 1.1 percent in March and an advance of 0.3 percent in February. Higher prices for vegetables, meat, fruit, and other animal and vegetable preparations and products more than offset lower prices for green coffee in April.

Nonfuel Industrial Supplies and Materials: Import prices for nonfuel industrial supplies and materials increased 1.6 percent in April, after declining 0.8 percent in March. Higher prices for finished metals shapes and advanced manufacturing more than offset lower prices for major nonferrous metals-crude.

Finished Goods: Finished goods import prices were mixed in April. Import capital goods prices increased 1.1 percent. Higher prices for computers, peripherals and semiconductors as well as for oil drilling, mining, and construction machinery and equipment more than offset lower prices for electric apparatus and parts in April. Over the same period, prices for import consumer goods, excluding automobiles increased 0.4 percent. In contrast, the price index for import automotive vehicles, parts and engines fell 0.1 percent in April.

Table A. Percent change in Import and Export Price Indexes, selected categories

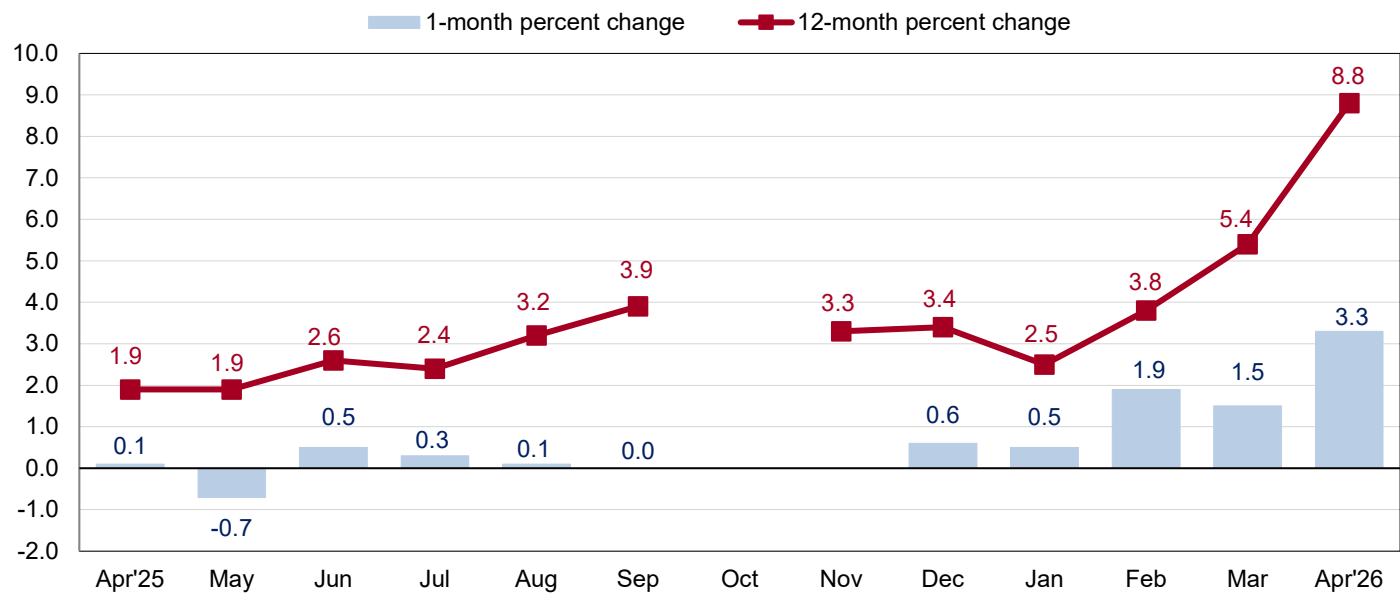
| Month | IMPORTS | | | EXPORTS | | |
|------------------------|------------------|-------------------|------------------|------------------|----------------------|--------------------------|
| | All imports | Fuel imports | Nonfuel imports | All exports | Agricultural exports | Non-agricultural exports |
| 2025 | | | | | | |
| April..... | 0.1 | -2.6 | 0.3 | 0.1 | 0.3 | 0.0 |
| May..... | -0.5 | -5.0 | -0.1 | -0.7 | 0.2 | -0.8 |
| June..... | -0.1 | 0.6 | -0.3 | 0.5 | 0.8 | 0.6 |
| July..... | 0.3 | 2.7 | 0.2 | 0.3 | -0.2 | 0.3 |
| August..... | -0.1 | -0.7 | -0.2 | 0.1 | -0.1 | 0.2 |
| September..... | -0.1 | -1.5 | 0.0 | 0.0 | -0.5 | 0.1 |
| October..... | – | – | – | – | 0.4 | – |
| November..... | – | – | – | – | 0.8 | – |
| December..... | 0.1 | -1.1 | 0.2 | 0.6 | -0.2 | 0.7 |
| 2026 | | | | | | |
| January..... | 0.5 ^r | -1.2 | 0.7 ^r | 0.5 | 0.1 | 0.5 |
| February..... | 1.0 ^r | 2.5 ^r | 0.8 | 1.9 | 0.8 ^r | 2.1 |
| March..... | 0.9 ^r | 10.0 ^r | 0.2 ^r | 1.5 ^r | 0.6 ^r | 1.6 ^r |
| April..... | 1.9 | 16.3 | 0.8 | 3.3 | 1.6 | 3.4 |
| Apr. 2024 to 2025..... | 0.0 | -11.9 | 1.1 | 1.9 | 1.8 | 1.8 |
| Apr. 2025 to 2026..... | 4.2 | 20.0 | 2.9 | 8.8 | 4.3 | 9.3 |

r Revised

Some Oct and Nov 2025 data values are not available due to the 2025 lapse in appropriations.

Exports

Chart 2. One-month and 12-month percent changes in the Export Price Index: April 2025 – April 2026



Note: The Oct and Nov 2025 data values are not available due to the 2025 lapse in appropriations.

Prices for U.S. exports increased 3.3 percent in April. Higher prices for nonagricultural and agricultural exports contributed to the monthly advance. U.S. export prices rose 8.8 percent over the 12-month period ended April 2026. The 12-month rise in U.S. export prices was the largest over-the-year advance since the index rose 9.8 percent for the year ended September 2022. (See All commodities in table 2.)

Agricultural Exports: The price index for agricultural exports increased 1.6 percent in April following a 0.6-percent rise in March. The April advance was the largest monthly increase since the index rose 2.1 percent in October 2024. Higher prices for fruit as well as for meat contributed to the April increase. The price index for agricultural exports advanced 4.3 percent over the past 12 months, as higher prices for soybeans as well as for meat drove the over-the-year increase.

All Exports Excluding Agriculture: Nonagricultural export prices increased 3.4 percent in April, after rising 1.6 percent in March and advancing 2.1 percent in February. Higher prices for nonagricultural industrial supplies and materials; capital goods; and consumer goods, excluding automobiles more than offset lower prices for automotive vehicles, parts and engines in April. Prices for nonagricultural exports increased 9.3 percent from April 2025 to April 2026. Higher prices for nonagricultural industrial supplies and materials; capital goods; and consumer goods, excluding automobiles drove the 12-month increase.

Nonagricultural Industrial Supplies and Materials: Nonagricultural industrial supplies and materials prices rose 7.3 percent in April, after an increase of 3.8 percent the previous month. Higher export prices for petroleum as well as for chemicals more than offset lower prices for nonferrous metals in April.

Finished Goods: Finished goods export prices were mixed in April. Capital goods export prices increased 0.7 percent. Higher prices for computers, peripherals, and semiconductors and for industrial and service machinery more than offset lower prices for civilian aircraft, aircraft engines and parts. The price index for export consumer goods, excluding automobiles advanced 0.5 percent over the same period. In contrast, export automotive vehicles, parts and engines prices decreased 0.1 percent in April, the first monthly decline for the price index since July 2025.

More information for the major import and export price indexes can be found at www.bls.gov/web/ximpim/largest.htm.

Measures of Import and Export Prices by Locality

Imports by Locality of Origin: Import prices from China rose 0.8 percent in April, the largest 1-month advance since the index increased 0.8 percent in July 2008. The price index for imports from China increased 0.3 percent over the past 12 months, the first year-over-year advance since December 2022. Prices for imports from Japan advanced 0.9 percent in April following a drop of 0.1 percent in March. The price index for imports from Japan rose 1.7 percent over the past 12 months. Import prices from the European Union and Mexico increased 0.9 percent and 1.2 percent, respectively, in April. Prices for imports from Canada increased 5.6 percent in April, the largest monthly rise since the index advanced 8.6 percent in March 2022. (See table 7.)

Exports by Locality of Destination: Prices for exports to China increased 2.1 percent in April following a rise of 1.8 percent the previous month. The price index for exports to China advanced 4.8 percent over the past 12 months, the largest over-the-year rise since the index increased 5.2 percent from September 2021 to September 2022. Prices for exports to Japan advanced 3.0 percent in April following a decline of 0.6 percent in March. The price index for exports to Japan increased 9.1 percent over the past 12 months. The price index for exports to the European Union increased 4.5 percent in April, the largest monthly rise since the index advanced 4.6 percent in March 2022. Export prices to Mexico increased 2.6 percent in April and prices for exports to Canada advanced 1.8 percent over the same period. (See table 8.)

Terms of Trade Indexes: Terms of trade indexes are based on country, region, or grouping and measure the change in the purchasing power of exports relative to imports. The U.S. terms of trade index with China increased 1.3 percent in April following a 1.2-percent advance in March. Higher export prices to China in April more than offset higher import prices from China. Over the same period, the index for U.S. terms of trade with Japan increased 2.1 percent, after declining 0.5 percent the previous month. In April, the index for U.S. terms of trade with the European Union increased 3.6 percent and the U.S. terms of trade index with Mexico advanced 1.4 percent. In contrast, the U.S. terms of trade index with Canada fell 3.7 percent over the same period. (See table 9.)

Import and Export Services

Imports: Import air passenger fares decreased 2.7 percent in April, after advancing 2.0 percent in March. Lower European and Asian fares more than offset higher Latin American/Caribbean fares. Over the past year, import air passenger fares rose 1.6 percent. Prices for import air freight increased 0.9 percent in April following a decline of 1.7 percent the previous month. Higher import prices for Asian air freight more than offset lower import prices for European air freight in April. Over the past 12 months, import air freight prices advanced 3.2 percent. (See table 10.)

Exports: Export air passenger fares rose 5.2 percent in April following a 5.6-percent advance the previous month. Higher Latin American/Caribbean and Asian fares more than offset lower European fares. The price index for export air passenger fares increased 5.4 percent from April 2025 to April 2026, the largest over-the-year rise since the index advanced 9.1 percent for the year ended April 2023. Export air freight prices increased 8.5 percent in April, the largest 1-month advance since percent changes were first published on a monthly basis in January 2006. Higher prices for export Asian and European air freight contributed to the monthly advance. Over the past 12 months, the price index for export air freight increased 4.6 percent, the largest over-the-year rise since October 2024.

U.S. Import and Export Price Index data for May 2026 are scheduled for release on Tuesday, June 16, 2026, at 8:30 a.m. (ET).

Table 1. U.S. import price indexes and percent changes for End Use categories of goods: April 2025 to April 2026

[2000=100, unless otherwise noted]

| Description | End Use | Relative importance Mar. 2026 ¹ | Index | | Percent change | | | | |
|---|---------|--|-----------|-----------|------------------------|------------------------|------------------------|------------------------|------------------------|
| | | | Mar. 2026 | Apr. 2026 | Annual | Monthly | | | |
| | | | | | Apr. 2025 to Apr. 2026 | Dec. 2025 to Jan. 2026 | Jan. 2026 to Feb. 2026 | Feb. 2026 to Mar. 2026 | Mar. 2026 to Apr. 2026 |
| All commodities | | 100.000 | 144.8 | 147.6 | 4.2 | 0.5 | 1.0 | 0.9 | 1.9 |
| All imports excluding food and fuels (Dec. 2010=100) | | 85.349 | 112.5 | 113.3 | 3.3 | 0.7 | 0.8 | 0.2 | 0.7 |
| All imports excluding petroleum | | 92.929 | 129.1 | 130.0 | 2.9 | 0.7 | 0.9 | 0.0 | 0.7 |
| All imports excluding fuels (Dec. 2001=100) | | 92.246 | 133.0 | 134.1 | 2.9 | 0.7 | 0.8 | 0.2 | 0.8 |
| Foods, feeds, & beverages | 0 | 6.897 | 228.9 | 230.9 | -2.0 | 0.3 | 0.3 | 1.1 | 0.9 |
| Agricultural foods, feeds & beverages, excluding distilled beverages..... | 00 | 5.718 | 260.8 | 263.4 | -0.9 | 0.2 | 0.2 | 1.2 | 1.0 |
| Nonagricultural foods (fish, distilled beverages)..... | 01 | 1.179 | 150.8 | 151.3 | -7.1 | 1.0 | 0.8 | 0.7 | 0.3 |
| Industrial supplies & materials | 1 | 22.499 | 259.7 | 277.0 | 13.1 | 1.2 | 2.3 | 2.7 | 6.7 |
| Industrial supplies & materials excluding petroleum..... | | 15.480 | 228.5 | 230.6 | 9.0 | 2.8 | 2.1 | -2.0 | 0.9 |
| Industrial supplies & materials excluding fuels (Dec. 2001=100)..... | | 14.740 | 255.9 | 260.0 | 9.4 | 2.4 | 2.2 | -0.8 | 1.6 |
| Industrial supplies & materials, durable.... | | 10.185 | 264.9 | 269.2 | 14.9 | 3.4 | 2.7 | -0.9 | 1.6 |
| Industrial supplies & materials nondurable excluding petroleum..... | | 5.243 | 184.0 | 183.3 | -0.9 | 1.9 | 1.1 | -3.9 | -0.4 |
| Fuels & lubricants..... | 10 | 7.754 | 269.5 | 313.5 | 20.0 | -1.2 | 2.5 | 10.0 | 16.3 |
| Petroleum & petroleum products..... | 100 | 7.071 | 286.9 | 341.4 | 22.0 | -2.7 | 2.7 | 14.0 | 19.0 |
| Crude petroleum..... | 10000 | 4.839 | 282.7 | 337.3 | 16.2 | -2.6 | 2.2 | 11.5 | 19.3 |
| Fuels, n.e.s.-coals & gas..... | 101 | 0.444 | 198.1 | 158.6 | -1.1 | 15.1 | 1.5 | -27.0 | -19.9 |
| Natural gas..... | 10110 | 0.359 | 195.0 | 151.9 | 0.1 | 17.7 | 1.8 | -31.9 | -22.1 |
| Paper & paper base stocks..... | 11 | 0.422 | 127.7 | 128.8 | -5.8 | -0.4 | 0.7 | -0.7 | 0.9 |
| Materials associated with nondurable supplies & materials..... | 12 | 4.138 | 199.8 | 203.1 | -0.3 | 0.2 | 1.1 | -0.3 | 1.7 |
| Selected building materials (Jan. 2025=100)..... | 13 | 1.371 | 93.8 | 94.6 | -4.8 | 0.5 | 1.4 | 0.0 | 0.9 |
| Unfinished metals related to durable goods..... | 14 | 4.334 | 457.4 | 448.6 | 27.6 | 4.2 | 5.3 | 1.5 | -1.9 |
| Finished metals related to durable goods..... | 15 | 2.900 | 270.0 | 289.1 | 16.0 | 4.9 | 1.2 | -5.5 | 7.1 |
| Nonmetals related to durable goods (Jan. 2025=100)..... | 16 | 1.580 | 99.2 | 101.3 | 2.9 | 0.8 | 0.2 | 0.4 | 2.1 |
| Capital goods | 2 | 31.079 | 97.4 | 98.5 | 4.6 | 0.6 | 1.3 | 0.5 | 1.1 |
| Nonelectrical machinery..... | 21 | 24.441 | 88.1 | 89.5 | 5.7 | 0.7 | 1.5 | 0.7 | 1.6 |
| Transportation equipment excluding motor vehicles (Dec. 2001=100)..... | 22 | 1.995 | 165.2 | 165.2 | 1.8 | -0.1 | 0.1 | 1.0 | 0.0 |
| Automotive vehicles, parts & engines | 3 | 14.649 | 120.4 | 120.3 | -1.1 | 0.3 | 0.1 | 0.0 | -0.1 |
| Automotive vehicles, parts and engines, 2 digit (Dec. 2023=100)..... | 30 | 14.649 | 101.1 | 101.0 | -1.1 | 0.2 | 0.1 | 0.0 | -0.1 |
| Consumer goods, excluding automotives | 4 | 24.877 | 110.6 | 111.0 | 1.1 | 0.0 | 0.2 | 0.2 | 0.4 |
| Nondurables, manufactured..... | 40 | 13.448 | 126.5 | 127.2 | 0.6 | -0.4 | 0.1 | 0.3 | 0.6 |
| Durables, manufactured..... | 41 | 10.725 | 95.9 | 96.2 | 2.2 | 0.5 | 0.3 | 0.3 | 0.3 |
| Nonmanufactured consumer goods..... | 42 | 0.704 | 117.9 | 118.1 | -4.5 | -0.6 | -0.7 | -4.9 | 0.2 |

¹ Relative importance values are based on 2024 trade values.

NOTES: Data may be revised in each of the 3 months after original publication.

Dash = Not available

Table 2. U.S. export price indexes and percent changes for End Use categories of goods: April 2025 to April 2026

[2000=100, unless otherwise noted]

| Description | End Use | Relative importance Mar. 2026 ¹ | Index | | Percent change | | | | |
|--|---------|--|-----------|-----------|------------------------|------------------------|------------------------|------------------------|------------------------|
| | | | Mar. 2026 | Apr. 2026 | Annual | Monthly | | | |
| | | | | | Apr. 2025 to Apr. 2026 | Dec. 2025 to Jan. 2026 | Jan. 2026 to Feb. 2026 | Feb. 2026 to Mar. 2026 | Mar. 2026 to Apr. 2026 |
| All commodities | | 100.000 | 160.8 | 166.1 | 8.8 | 0.5 | 1.9 | 1.5 | 3.3 |
| Agricultural commodities | | 8.795 | 236.3 | 240.1 | 4.3 | 0.1 | 0.8 | 0.6 | 1.6 |
| All exports excluding food and fuels (Dec. 2010=100) | | 73.879 | 125.4 | 126.3 | 5.5 | 0.9 | 1.0 | 0.0 | 0.7 |
| All exports excluding fuels (June 2022=100) | | 82.254 | 108.1 | 109.0 | 5.4 | 0.8 | 0.8 | 0.1 | 0.8 |
| Nonagricultural commodities | | 91.205 | 154.7 | 160.0 | 9.3 | 0.5 | 2.1 | 1.6 | 3.4 |
| Foods, feeds, & beverages | 0 | 8.375 | 243.4 | 247.2 | 4.9 | -0.1 | 1.2 | 0.6 | 1.6 |
| Agricultural foods, feeds & beverages, excluding distilled beverages..... | 00 | 7.912 | 244.6 | 248.5 | 4.8 | -0.1 | 1.2 | 0.5 | 1.6 |
| Nonagricultural foods (fish, distilled beverages)..... | 01 | 0.462 | 217.6 | 219.5 | 6.1 | 0.8 | 0.8 | 1.4 | 0.9 |
| Industrial supplies & materials | 1 | 39.791 | 228.1 | 244.5 | 18.3 | 0.5 | 4.6 | 3.7 | 7.2 |
| Industrial supplies & materials excluding fuels (Dec. 2020=100)..... | | 21.971 | 140.9 | 142.6 | 12.2 | 1.7 | 2.6 | 0.0 | 1.2 |
| Industrial supplies & materials, durable.... | | 12.636 | 295.4 | 292.4 | 19.9 | 2.8 | 3.9 | -0.8 | -1.0 |
| Industrial supplies & materials, nondurable..... | | 27.156 | 201.5 | 223.8 | 17.5 | -0.7 | 4.9 | 6.0 | 11.1 |
| Agricultural industrial supplies & materials..... | 10 | 0.882 | 190.8 | 193.5 | 0.0 | 1.7 | -2.7 | 1.0 | 1.4 |
| Nonagricultural industrial supplies & materials..... | | 38.909 | 229.1 | 245.9 | 18.7 | 0.4 | 4.8 | 3.8 | 7.3 |
| Fuels & lubricants..... | 11 | 17.746 | 252.9 | 290.0 | 25.2 | -1.3 | 7.4 | 8.7 | 14.7 |
| Nonagricultural supplies & materials excluding fuels & building materials..... | 12 | 20.422 | 239.3 | 242.1 | 13.1 | 1.9 | 2.9 | 0.0 | 1.2 |
| Selected building materials..... | 13 | 0.742 | 165.6 | 167.2 | 4.5 | -1.6 | 1.8 | 0.2 | 1.0 |
| Capital goods | 2 | 31.466 | 127.9 | 128.8 | 2.9 | 0.8 | 0.1 | 0.1 | 0.7 |
| Nonelectrical machinery..... | 21 | 21.595 | 105.4 | 106.6 | 2.8 | 0.5 | 0.0 | -0.1 | 1.1 |
| Transportation equipment excluding motor vehicles (Dec. 2001=100)..... | 22 | 6.132 | 231.0 | 230.5 | 2.5 | 1.8 | -0.2 | 0.3 | -0.2 |
| Automotive vehicles, parts & engines | 3 | 7.985 | 134.3 | 134.2 | 1.4 | 0.1 | 0.1 | 0.1 | -0.1 |
| Vehicles-passenger (Dec. 2023=100)..... | 30 | 7.985 | 105.6 | 105.6 | 1.4 | 0.1 | 0.1 | 0.0 | 0.0 |
| Consumer goods, excluding automotives | 4 | 12.383 | 122.8 | 123.4 | 3.4 | 0.3 | 0.7 | -0.2 | 0.5 |
| Nondurables, manufactured..... | 40 | 7.282 | 112.4 | 113.1 | 3.3 | 0.7 | 0.8 | -0.2 | 0.6 |
| Durables, manufactured..... | 41 | 4.386 | 129.6 | 130.1 | 5.3 | -0.1 | 0.5 | 0.3 | 0.4 |
| Nonmanufactured consumer goods (Dec. 2018=100)..... | 42 | 0.715 | 112.7 | 112.8 | -5.4 | 0.1 | 0.0 | -4.6 | 0.1 |

¹ Relative importance values are based on 2024 trade values.

NOTES: Data may be revised in each of the 3 months after original publication.

Dash = Not available

Table 3. U.S. import price indexes and percent changes for NAICS industries: April 2025 to April 2026
 [December 2005=100, unless otherwise noted]

| Description | NAICS | Relative importance Mar. 2026 ¹ | Index | | Percent change | | | | |
|---|-------|--|-----------|-----------|-------------------------------|------------------------|------------------------|------------------------|------------------------|
| | | | Mar. 2026 | Apr. 2026 | Annual Apr. 2025 to Apr. 2026 | Monthly | | | |
| | | | | | | Dec. 2025 to Jan. 2026 | Jan. 2026 to Feb. 2026 | Feb. 2026 to Mar. 2026 | Mar. 2026 to Apr. 2026 |
| Nonmanufacturing | | 7.652 | 149.9 | 167.0 | 9.7 | -0.1 | 1.6 | 5.6 | 11.4 |
| Agriculture, forestry, fishing and hunting | 11 | 2.145 | 264.5 | 267.0 | -1.9 | 1.6 | 0.7 | 3.8 | 0.9 |
| Crop production..... | 111 | 1.771 | 280.5 | 283.2 | -2.5 | 1.4 | 0.6 | 4.2 | 1.0 |
| Animal production (Dec. 2022=100)..... | 112 | 0.233 | 133.5 | 136.2 | 6.0 | 6.2 | -0.4 | 1.5 | 2.0 |
| Forestry and logging (Jan. 2025=100).... | 113 | 0.094 | 89.7 | 93.2 | -7.1 | -5.3 | 3.6 | -0.7 | 3.9 |
| Fishing, hunting and trapping (Jan. 2025=100)..... | 114 | 0.047 | 104.5 | 93.9 | 0.5 | 2.5 | 6.5 | 8.5 | -10.1 |
| Mining | 21 | 5.507 | 134.9 | 155.8 | 14.4 | -1.0 | 2.1 | 6.4 | 15.5 |
| Oil and gas extraction..... | 211 | 5.296 | 132.0 | 153.4 | 14.6 | -0.8 | 2.1 | 6.6 | 16.2 |
| Mining (except oil and gas) (Dec. 2022=100)..... | 212 | 0.211 | 129.1 | 127.1 | 5.2 | -3.1 | 0.3 | 1.3 | -1.5 |
| Manufacturing | | 91.972 | 125.9 | 127.4 | 3.5 | 0.5 | 0.9 | 0.5 | 1.2 |
| Manufacturing, part 1 | 31 | 10.082 | 138.9 | 140.2 | -1.3 | -0.7 | 0.1 | -0.1 | 0.9 |
| Food manufacturing..... | 311 | 4.473 | 204.3 | 206.3 | -0.2 | -1.2 | -0.2 | 0.1 | 1.0 |
| Beverage and tobacco product manufacturing..... | 312 | 0.900 | 123.2 | 123.9 | -11.2 | 0.8 | 2.0 | -0.6 | 0.6 |
| Textile mills (Dec. 2023=100)..... | 313 | 0.281 | 100.5 | 102.4 | 0.9 | 0.3 | 0.5 | 0.4 | 1.9 |
| Textile product mills (Dec. 2023=100).... | 314 | 0.696 | 96.2 | 97.0 | -1.0 | 0.8 | 1.2 | 1.2 | 0.8 |
| Apparel manufacturing..... | 315 | 2.475 | 112.9 | 114.8 | -0.9 | -1.0 | -0.1 | -1.0 | 1.7 |
| Manufacturing, part 2 | 32 | 18.936 | 140.1 | 144.0 | 3.4 | 0.0 | 0.6 | 2.2 | 2.8 |
| Wood product manufacturing (Jan. 2025=100)..... | 321 | 0.718 | 92.2 | 93.8 | -7.1 | 0.9 | 2.0 | 0.7 | 1.7 |
| Paper manufacturing..... | 322 | 0.765 | 112.9 | 113.9 | -2.6 | 0.1 | 0.3 | 0.2 | 0.9 |
| Petroleum and coal products manufacturing..... | 324 | 2.023 | 139.1 | 165.7 | 38.4 | -2.7 | 3.8 | 21.5 | 19.1 |
| Chemical manufacturing..... | 325 | 12.091 | 150.1 | 151.2 | 0.8 | 0.2 | 0.3 | 0.3 | 0.7 |
| Plastics and rubber products manufacturing..... | 326 | 2.311 | 126.8 | 129.0 | 0.0 | 0.6 | 0.1 | -0.4 | 1.7 |
| Nonmetallic mineral product manufacturing..... | 327 | 0.900 | 141.2 | 141.1 | -0.4 | 0.6 | -0.6 | 0.6 | -0.1 |
| Manufacturing, part 3 | 33 | 62.955 | 118.5 | 119.4 | 4.4 | 0.9 | 1.1 | 0.1 | 0.8 |
| Primary metal manufacturing..... | 331 | 5.838 | 324.7 | 326.7 | 27.4 | 5.3 | 4.7 | -2.3 | 0.6 |
| Fabricated metal product manufacturing... | 332 | 2.926 | 140.6 | 147.8 | 2.3 | 0.1 | 0.4 | 0.1 | 5.1 |
| Machinery manufacturing..... | 333 | 8.025 | 135.8 | 135.9 | 2.4 | 0.7 | 0.1 | 0.4 | 0.1 |
| Computer and electronic product manufacturing..... | 334 | 17.919 | 74.0 | 75.6 | 5.7 | 0.4 | 1.9 | 0.7 | 2.2 |
| Electrical equipment, appliance, and component manufacturing..... | 335 | 6.318 | 126.8 | 125.3 | -1.2 | 0.2 | 0.1 | -0.1 | -1.2 |
| Transportation equipment manufacturing.. | 336 | 15.242 | 120.0 | 120.0 | -0.7 | 0.3 | 0.2 | 0.1 | 0.0 |
| Miscellaneous manufacturing..... | 339 | 5.192 | 138.6 | 138.1 | 4.9 | 0.9 | 1.2 | 0.0 | -0.4 |

¹ Relative importance values are based on 2024 trade values.
 NOTES: Data may be revised in each of the 3 months after original publication.
 Dash = Not available

Table 4. U.S. export price indexes and percent changes for NAICS industries: April 2025 to April 2026
 [December 2005=100, unless otherwise noted]

| Description | NAICS | Relative importance Mar. 2026 ¹ | Index | | Percent change | | | | |
|--|-------|--|--------------|--------------|---------------------------------|---------------------------------|---------------------------------|---------------------------------|---------------------------------|
| | | | Mar. 2026 | Apr. 2026 | Annual | Monthly | | | |
| | | | | | Apr. 2025 to Apr. 2026 | Dec. 2025 to Jan. 2026 | Jan. 2026 to Feb. 2026 | Feb. 2026 to Mar. 2026 | Mar. 2026 to Apr. 2026 |
| Nonmanufacturing..... | | 15.276 | 185.0 | 204.7 | 17.7 | -1.0 | 7.5 | 3.7 | 10.6 |
| Agriculture, forestry, fishing and hunting..... | 11 | 4.175 | 186.0 | 189.5 | 3.6 | 0.1 | 0.8 | 0.6 | 1.9 |
| Crop production..... | 111 | 3.942 | 197.8 | 201.4 | 3.9 | 0.0 | 0.9 | 0.7 | 1.8 |
| Animal production (Jan. 2025=100)..... | 112 | 0.107 | 102.7 | 106.1 | 0.9 | 5.8 | -5.1 | 1.2 | 3.3 |
| Forestry and logging (Jan. 2025=100)..... | 113 | 0.094 | 97.0 | 98.8 | -5.0 | -2.3 | 0.2 | -2.5 | 1.9 |
| Fishing, hunting and trapping (Jan. 2025=100)..... | 114 | 0.032 | 96.6 | 100.4 | -3.2 | 3.0 | 10.9 | -1.7 | 3.9 |
| Mining..... | 21 | 11.101 | 120.3 | 137.1 | 23.5 | -1.6 | 10.4 | 4.9 | 14.0 |
| Oil and gas extraction (Dec. 2021=100)... | 211 | 9.856 | 108.0 | 125.2 | 24.1 | -1.9 | 10.8 | 5.4 | 15.9 |
| Mining (except oil and gas)..... | 212 | 1.246 | 138.5 | 135.1 | 18.7 | 1.3 | 6.7 | 1.7 | -2.5 |
| Manufacturing..... | | 82.832 | 144.7 | 147.5 | 6.9 | 0.7 | 0.8 | 1.1 | 1.9 |
| Manufacturing, part 1..... | 31 | 5.937 | 177.7 | 180.9 | 5.4 | -0.1 | 0.8 | 0.2 | 1.8 |
| Food manufacturing..... | 311 | 4.367 | 211.7 | 214.7 | 5.0 | -0.3 | 1.0 | 0.4 | 1.4 |
| Beverage and tobacco product manufacturing..... | 312 | 0.489 | 136.1 | 139.7 | 4.3 | 2.0 | -1.3 | 1.4 | 2.6 |
| Manufacturing, part 2..... | 32 | 25.190 | 140.2 | 148.3 | 9.9 | 0.0 | 1.1 | 3.9 | 5.8 |
| Wood product manufacturing (Dec. 2017=100)..... | 321 | 0.408 | 133.6 | 135.6 | 2.6 | -0.5 | -0.6 | -1.2 | 1.5 |
| Paper manufacturing (Jan. 2025=100)..... | 322 | 1.221 | 98.2 | 100.4 | 0.8 | -0.8 | -1.0 | 0.7 | 2.2 |
| Petroleum and coal products manufacturing..... | 324 | 6.530 | 150.6 | 173.8 | 30.8 | -0.7 | 2.4 | 15.3 | 15.4 |
| Chemical manufacturing..... | 325 | 14.261 | 137.2 | 141.0 | 3.8 | 0.4 | 1.0 | 1.0 | 2.8 |
| Plastics and rubber products manufacturing..... | 326 | 1.981 | 136.6 | 137.0 | 0.2 | 0.0 | -0.9 | -2.2 | 0.3 |
| Nonmetallic mineral product manufacturing..... | 327 | 0.620 | 138.6 | 140.9 | 6.7 | -1.2 | 1.5 | -0.5 | 1.7 |
| Manufacturing, part 3..... | 33 | 51.705 | 143.4 | 143.6 | 5.4 | 1.1 | 0.7 | -0.1 | 0.1 |
| Primary metal manufacturing..... | 331 | 5.974 | 354.9 | 343.9 | 29.1 | 7.4 | 4.1 | -1.2 | -3.1 |
| Machinery manufacturing..... | 333 | 8.459 | 158.3 | 158.4 | 3.4 | 0.4 | 0.3 | 0.2 | 0.1 |
| Computer and electronic product manufacturing..... | 334 | 12.852 | 84.4 | 86.0 | 2.6 | 0.4 | -0.1 | 0.1 | 1.9 |
| Transportation equipment manufacturing.. | 336 | 13.132 | 156.8 | 156.6 | 1.8 | 0.8 | -0.1 | 0.2 | -0.1 |
| Furniture and related product manufacturing (Dec. 2023=100)..... | 337 | 0.296 | 112.0 | 113.0 | 7.7 | 0.9 | 0.3 | -0.3 | 0.9 |
| Miscellaneous manufacturing..... | 339 | 4.337 | 147.5 | 147.6 | 3.5 | 0.0 | 0.8 | -0.7 | 0.1 |

¹ Relative importance values are based on 2024 trade values.

NOTES: Data may be revised in each of the 3 months after original publication.

Dash = Not available

Table 5. U.S. import price indexes and percent changes for Harmonized categories of goods: April 2025 to April 2026

[2000=100, unless otherwise noted]

| Description | Harmoni- zied system | Relative importance Mar. 2026 ¹ | Index | | Percent change | | | | |
|--|----------------------------|---|--------------|--------------|---------------------------------|---------------------------------|---------------------------------|---------------------------------|---------------------------------|
| | | | Mar. 2026 | Apr. 2026 | Annual | Monthly | | | |
| | | | | | Apr. 2025 to Apr. 2026 | Dec. 2025 to Jan. 2026 | Jan. 2026 to Feb. 2026 | Feb. 2026 to Mar. 2026 | Mar. 2026 to Apr. 2026 |
| Live animals; animal products..... | I | 1.543 | 264.1 | 267.0 | 3.2 | 1.6 | -0.2 | 0.6 | 1.1 |
| Meat and edible meat offal..... | 02 | 0.529 | 392.5 | 400.2 | 7.8 | -0.6 | -1.0 | 0.0 | 2.0 |
| Fish and crustaceans, molluscs and other aquatic invertebrates..... | 03 | 0.687 | 165.5 | 166.0 | 0.7 | 2.5 | -0.5 | 2.2 | 0.3 |
| Dairy products, eggs, and honey (Jan. 2025=100)..... | 04 | 0.142 | 99.9 | 100.3 | -2.3 | 1.2 | -1.1 | -1.5 | 0.4 |
| Vegetable products..... | II | 2.131 | 275.5 | 278.7 | -1.7 | 0.3 | 0.2 | 3.5 | 1.2 |
| Live trees & plants; bulbs, roots; cut flowers and ornamental foliage (Jan. 2025=100)... | 06 | 0.130 | 78.1 | 81.3 | -6.7 | -0.3 | -0.8 | -9.7 | 4.1 |
| Edible vegetables, roots, and tubers..... | 07 | 0.520 | 120.2 | 126.1 | 25.0 | 0.5 | 3.9 | 15.1 | 4.9 |
| Edible fruit and nuts; peel of citrus fruit or melons..... | 08 | 0.718 | 121.6 | 123.5 | -8.7 | -0.1 | 0.6 | 3.6 | 1.6 |
| Coffee, tea, mate and spices..... | 09 | 0.450 | 402.4 | 388.2 | -12.8 | 0.9 | -3.3 | -2.8 | -3.5 |
| Cereals (Jan. 2025=100)..... | 10 | 0.091 | 96.1 | 94.9 | -2.8 | 0.8 | 0.5 | 4.0 | -1.2 |
| Milling industry products; malt; starches; inulin; wheat gluten (Jan. 2025=100)..... | 11 | 0.083 | 93.2 | 93.8 | -1.6 | 0.8 | 0.0 | 0.8 | 0.6 |
| Oilseeds & misc grains, seeds, plants, straw & fodder (Jan. 2025=100)..... | 12 | 0.087 | 100.3 | 97.6 | 2.0 | 3.9 | -3.3 | 3.3 | -2.7 |
| Animal or vegetable fats and oils (Dec. 2009=100)..... | III | 0.565 | 162.3 | 167.6 | 4.9 | -3.4 | 2.2 | -0.4 | 3.3 |
| Animal or vegetable fats and oils and their cleavage products; prepared (Dec. 2023=100)..... | 15 | 0.565 | 109.3 | 112.8 | 4.8 | -3.3 | 2.1 | -0.4 | 3.2 |
| Prepared foodstuffs, beverages, and tobacco..... | IV | 3.181 | 200.7 | 201.4 | -6.2 | -0.6 | 0.4 | -0.2 | 0.3 |
| Sugars and sugar confectionary (Dec. 2021=100)..... | 17 | 0.204 | 116.5 | 117.6 | -2.4 | -2.7 | -1.7 | 4.5 | 0.9 |
| Cocoa and cocoa preparations (Dec. 2009=100)..... | 18 | 0.301 | 251.4 | 244.6 | -19.2 | -1.4 | -1.0 | -2.2 | -2.7 |
| Preparations of cereals, flour, starch or milk; bakers' wares (Dec. 2023=100)..... | 19 | 0.492 | 98.8 | 99.3 | 2.3 | 0.1 | 0.8 | -0.3 | 0.5 |
| Preparations of vegetables, fruit, nuts, or other parts of plants (Jan. 2025=100)..... | 20 | 0.442 | 95.8 | 96.2 | -2.5 | 0.5 | -0.6 | -1.1 | 0.4 |
| Miscellaneous edible preparations (Dec. 2022=100)..... | 21 | 0.403 | 97.4 | 98.7 | 0.2 | -4.1 | 0.3 | 0.5 | 1.3 |
| Beverages, spirits, and vinegar..... | 22 | 0.847 | 132.5 | 132.9 | -12.3 | 0.5 | 2.4 | -1.3 | 0.3 |
| Residues and waste from the food industries; prepared animal feed (Jan. 2025=100)..... | 23 | 0.147 | 90.2 | 92.2 | -5.5 | -1.6 | -0.9 | 0.6 | 2.2 |
| Tobacco and manufactured tobacco substitutes (Jan. 2025=100)..... | 24 | 0.108 | 100.7 | 103.4 | 2.2 | 2.6 | 0.6 | 2.4 | 2.7 |
| Mineral products..... | V | 7.640 | 278.3 | 323.6 | 19.9 | -1.3 | 2.4 | 9.9 | 16.3 |
| Salt; sulfur; earths and stone; plaster materials, lime & cement (Jan. 2025=100)..... | 25 | 0.170 | 109.8 | 110.9 | 13.4 | -2.4 | 3.9 | 2.8 | 1.0 |
| Ores, slag and ash (Jan. 2025=100)..... | 26 | 0.113 | 102.6 | 100.1 | -1.6 | 0.8 | -4.9 | 0.6 | -2.4 |
| Mineral fuels, oils and residuals, bituminous substances and mineral waxes..... | 27 | 7.357 | 270.7 | 316.4 | 20.4 | -1.3 | 2.5 | 10.3 | 16.9 |
| Products of the chemical or allied industries..... | VI | 11.596 | 171.5 | 172.5 | 0.9 | 0.2 | 0.1 | 0.4 | 0.6 |
| Inorganic chemicals (Dec. 2024=100)..... | 28 | 0.563 | 95.7 | 97.6 | 3.3 | 0.8 | -0.9 | -1.2 | 2.0 |
| Organic chemicals..... | 29 | 1.929 | 120.7 | 123.3 | -6.1 | -7.3 | 1.0 | 0.7 | 2.2 |
| Pharmaceutical products..... | 30 | 6.875 | 161.2 | 161.0 | 3.8 | 1.6 | -0.1 | 0.7 | -0.1 |
| Fertilizers (Dec. 2022=100)..... | 31 | 0.317 | 69.9 | 69.1 | 6.5 | -0.1 | -0.1 | 2.3 | -1.1 |

See footnotes at end of table.

Table 5. U.S. import price indexes and percent changes for Harmonized categories of goods: April 2025 to April 2026 — Continued
 [2000=100, unless otherwise noted]

| Description | Harmonized system | Relative importance Mar. 2026 ¹ | Index | | Percent change | | | | |
|---|-------------------|--|-----------|-----------|------------------------|------------------------|------------------------|------------------------|------------------------|
| | | | Mar. 2026 | Apr. 2026 | Annual | Monthly | | | |
| | | | | | Apr. 2025 to Apr. 2026 | Dec. 2025 to Jan. 2026 | Jan. 2026 to Feb. 2026 | Feb. 2026 to Mar. 2026 | Mar. 2026 to Apr. 2026 |
| Soap, lubricants; waxes, candles, polishing products, and modeling paste (Dec. 2024=100)..... | 34 | 0.195 | 100.8 | 98.6 | -1.4 | 0.7 | 0.2 | 1.5 | -2.2 |
| Albuminoidal substances; modified starches; glues; enzymes (Jan. 2025=100)..... | 35 | 0.109 | 95.0 | 100.6 | 6.8 | 3.9 | 0.3 | -1.5 | 5.9 |
| Miscellaneous chemical products..... | 38 | 0.727 | 111.1 | 109.5 | 1.4 | 1.8 | 0.4 | 0.9 | -1.4 |
| Plastics and articles thereof; rubber and articles thereof..... | VII | 3.246 | 148.3 | 152.4 | 0.0 | 0.6 | 0.3 | -0.3 | 2.8 |
| Plastics and articles thereof..... | 39 | 2.216 | 145.1 | 150.2 | 0.8 | 0.6 | 0.6 | 0.1 | 3.5 |
| Rubber and articles thereof..... | 40 | 1.030 | 157.4 | 159.2 | -1.8 | 0.6 | -0.1 | -1.0 | 1.1 |
| Raw hides, skins, leather, furskins, travel goods, etc (Dec. 2025=100)..... | VIII | 0.423 | 98.9 | 100.7 | — | -0.6 | 0.1 | -0.6 | 1.8 |
| Articles of leather; travel goods, bags, etc. of various materials (Dec. 2025=100)..... | 42 | 0.404 | 98.7 | 100.5 | — | -0.6 | 0.1 | -0.8 | 1.8 |
| Wood, wood charcoal, cork, straw, basketware and wickerwork (Jan. 2025=100)..... | IX | 0.738 | 92.7 | 93.6 | -7.4 | 0.9 | 1.7 | 1.1 | 1.0 |
| Wood and articles of wood; wood charcoal (Jan. 2025=100)..... | 44 | 0.705 | 91.8 | 93.4 | -7.7 | 1.1 | 1.9 | 0.3 | 1.7 |
| Woodpulp, recovered paper, and paper products (Jan. 2025=100)..... | X | 0.854 | 95.7 | 96.0 | -2.6 | 0.0 | 0.3 | -0.2 | 0.3 |
| Pulp wood, waste paper, and paperboard (Jan. 2025=100)..... | 47 | 0.118 | 88.2 | 90.6 | -10.9 | -1.3 | 1.0 | -1.3 | 2.7 |
| Paper and paperboard; articles of paper pulp, paper or paperboard (Jan. 2025=100)..... | 48 | 0.571 | 96.3 | 96.2 | -1.5 | 0.2 | 0.4 | 0.0 | -0.1 |
| Textile and textile articles..... | XI | 3.373 | 114.9 | 116.5 | -1.0 | -0.8 | 0.3 | -0.4 | 1.4 |
| Manmade filaments, yarns and woven fabrics (Jan. 2025=100)..... | 54 | 0.054 | 93.8 | 94.9 | -4.3 | 2.5 | 0.9 | -0.4 | 1.2 |
| Manmade staple fibers, yarns & woven fabrics (Jan. 2025=100)..... | 55 | 0.047 | 94.4 | 94.9 | -2.4 | 2.1 | -3.1 | 1.9 | 0.5 |
| Wadding, felt and nonwovens; special yarns; twine, cordage, and ropes (Jan. 2025=100)..... | 56 | 0.085 | 95.4 | 97.6 | -2.2 | -1.3 | 2.8 | -3.3 | 2.3 |
| Articles of apparel and clothing accessories, knitted or crocheted (Dec. 2023=100)..... | 61 | 1.343 | 93.9 | 95.6 | -0.6 | -1.1 | -0.3 | -1.2 | 1.8 |
| Articles of apparel and clothing accessories, not knitted or crocheted..... | 62 | 1.048 | 121.9 | 123.5 | -1.6 | -1.5 | 0.7 | -0.8 | 1.3 |
| Made-up or worn textile articles (Dec. 2023=100)..... | 63 | 0.505 | 94.2 | 94.6 | -1.9 | 1.8 | 1.2 | 2.4 | 0.4 |
| Headgear, umbrellas, artificial flowers, etc..... | XII | 1.049 | 127.0 | 126.5 | 2.3 | -0.9 | 0.1 | 0.4 | -0.4 |
| Footwear and parts of such articles..... | 64 | 0.872 | 125.9 | 124.0 | 1.9 | -0.1 | -0.9 | 0.9 | -1.5 |
| Stone, plaster, cement, asbestos, ceramics, glass etc..... | XIII | 0.792 | 133.3 | 133.3 | -0.7 | 0.2 | -0.5 | 0.5 | 0.0 |
| Articles of stone, plaster, cement, asbestos, or mica (Dec. 2020=100)..... | 68 | 0.281 | 93.7 | 94.1 | -1.8 | 1.0 | 0.1 | -1.5 | 0.4 |
| Ceramic products (Dec. 2024=100)..... | 69 | 0.231 | 99.2 | 100.3 | 1.9 | 0.0 | -0.2 | 1.8 | 1.1 |
| Glass and glassware (Dec. 2021=100)..... | 70 | 0.281 | 109.3 | 107.8 | -1.6 | -0.3 | -1.5 | 1.4 | -1.4 |
| Pearls, stones, precious metals, imitation jewelry, and coins..... | XIV | 4.571 | 398.4 | 390.3 | 36.7 | 6.2 | 4.0 | -3.0 | -2.0 |
| Pearls, precious stones, precious metals jewelry, coin (Dec. 2023=100)..... | 71 | 4.571 | 177.0 | 173.4 | 36.6 | 6.2 | 4.0 | -3.0 | -2.0 |
| Base metals and articles of base metals. ... | XV | 5.215 | 234.2 | 244.8 | 7.0 | 1.7 | 2.2 | 0.6 | 4.5 |

See footnotes at end of table.

Table 5. U.S. import price indexes and percent changes for Harmonized categories of goods: April 2025 to April 2026 — Continued
 [2000=100, unless otherwise noted]

| Description | Harmoni- zied system | Relative importance Mar. 2026 ¹ | Index | | Percent change | | | | |
|--|----------------------------|---|--------------|--------------|---------------------------------|---------------------------------|---------------------------------|---------------------------------|---------------------------------|
| | | | Mar. 2026 | Apr. 2026 | Annual | Monthly | | | |
| | | | | | Apr. 2025 to Apr. 2026 | Dec. 2025 to Jan. 2026 | Jan. 2026 to Feb. 2026 | Feb. 2026 to Mar. 2026 | Mar. 2026 to Apr. 2026 |
| Iron and steel (Jan. 2025=100)..... | 72 | 0.871 | 92.8 | 94.5 | -3.2 | 0.7 | 0.2 | 1.1 | 1.8 |
| Articles of iron or steel..... | 73 | 1.437 | 175.7 | 190.5 | 2.5 | 0.2 | -0.5 | -0.6 | 8.4 |
| Copper and articles thereof..... | 74 | 0.684 | 531.3 | 545.9 | 20.5 | 5.9 | 7.6 | -0.4 | 2.7 |
| Nickel and articles thereof (Jan. 2025=100)..... | 75 | 0.107 | 102.5 | 107.1 | 7.0 | 1.0 | 1.7 | 1.1 | 4.5 |
| Aluminum and articles thereof..... | 76 | 0.976 | 224.0 | 238.8 | 13.7 | 3.4 | 4.6 | 1.4 | 6.6 |
| Lead and articles thereof (Jan. 2025=100)... | 78 | 0.030 | 104.6 | 100.5 | -2.0 | 2.9 | 1.1 | -1.0 | -3.9 |
| Zinc and articles thereof (Jan. 2025=100)... | 79 | 0.075 | 107.9 | 110.0 | 17.3 | 1.1 | 0.7 | 0.6 | 1.9 |
| Tin and articles thereof (Jan. 2025=100)..... | 80 | 0.042 | 150.8 | 152.5 | 45.2 | 9.2 | 10.4 | 4.1 | 1.1 |
| Base metals nesoi; cermets; articles thereof (Jan. 2025=100)..... | 81 | 0.137 | 122.7 | 126.4 | 27.3 | 0.2 | 6.9 | 4.1 | 3.0 |
| Tools, implements, cutlery, spoons and forks, of base metal; parts thereof..... | 82 | 0.354 | 134.5 | 137.2 | 5.1 | 3.3 | 1.0 | 0.4 | 2.0 |
| Miscellaneous articles of base metal..... | 83 | 0.502 | 148.6 | 148.6 | 4.6 | -1.6 | 1.3 | 1.6 | 0.0 |
| Machinery, electrical equipment, TV image and sound recorders, parts, etc..... | XVI | 32.089 | 84.4 | 85.3 | 3.6 | 0.6 | 1.1 | 0.5 | 1.1 |
| Machinery and mechanical appliances; parts thereof..... | 84 | 17.102 | 94.1 | 96.1 | 6.7 | 0.7 | 1.7 | 0.7 | 2.1 |
| Electrical machinery and equip, sound and TV recorders & reproducers, parts..... | 85 | 14.987 | 75.4 | 75.5 | 0.5 | 0.5 | 0.3 | 0.3 | 0.1 |
| Vehicles, aircraft, vessels and associated transport equipment..... | XVII | 13.001 | 124.0 | 124.0 | -0.6 | 0.2 | 0.2 | 0.2 | 0.0 |
| Motor vehicles and their parts..... | 87 | 11.972 | 122.4 | 122.4 | -1.0 | 0.2 | 0.2 | 0.1 | 0.0 |
| Optical, photo, measuring, medical & musical instruments; & timepieces..... | XVIII | 4.215 | 114.4 | 113.7 | 1.8 | 0.5 | 0.4 | 0.4 | -0.6 |
| Optical, photographic, measuring and medical instruments..... | 90 | 3.897 | 109.1 | 109.1 | 1.8 | 0.5 | 0.4 | 0.4 | 0.0 |
| Miscellaneous manufactured articles..... | XX | 3.701 | 121.8 | 121.8 | 0.1 | 0.1 | 0.3 | 0.0 | 0.0 |
| Toys, games and sports equipment; parts and accessories thereof..... | 95 | 1.287 | 106.9 | 106.6 | -0.5 | 0.5 | 0.0 | -0.1 | -0.3 |
| Miscellaneous manufactured articles..... | 96 | 0.270 | 150.9 | 153.2 | -0.3 | 0.3 | 1.4 | 1.3 | 1.5 |

¹ Relative importance values are based on 2024 trade values.

NOTES: Data may be revised in each of the 3 months after original publication.

Dash = Not available

Table 6. U.S. export price indexes and percent changes for Harmonized categories of goods: April 2025 to April 2026

[2000=100, unless otherwise noted]

| Description | Harmoni- zied system | Relative importance Mar. 2026 ¹ | Index | | Percent change | | | | |
|--|----------------------------|---|--------------|--------------|---------------------------------|---------------------------------|---------------------------------|---------------------------------|---------------------------------|
| | | | Mar. 2026 | Apr. 2026 | Annual | Monthly | | | |
| | | | | | Apr. 2025 to Apr. 2026 | Dec. 2025 to Jan. 2026 | Jan. 2026 to Feb. 2026 | Feb. 2026 to Mar. 2026 | Mar. 2026 to Apr. 2026 |
| Live animals; animal products..... | I | 1.850 | 291.5 | 297.0 | 5.2 | -0.5 | 1.8 | 0.9 | 1.9 |
| Meat & edible meat offal (Dec. 2006=100)... | 02 | 1.156 | 254.9 | 260.1 | 5.6 | -1.4 | 2.4 | 0.5 | 2.0 |
| Fish and crustaceans, mollusks and aquatic invertebrates (Jan. 2025=100)..... | 03 | 0.254 | 106.6 | 105.9 | 6.0 | 1.2 | 3.1 | 0.0 | -0.7 |
| Dairy products, eggs and honey (Jan. 2025=100)..... | 04 | 0.318 | 95.5 | 98.7 | 0.9 | -1.5 | 1.3 | 2.0 | 3.4 |
| Products of animal origin, nesoi (Jan. 2025=100)..... | 05 | 0.054 | 109.7 | 110.5 | 13.1 | 3.9 | -3.4 | 3.0 | 0.7 |
| Vegetable products..... | II | 4.063 | 249.1 | 253.2 | 4.3 | 0.2 | 0.7 | 1.0 | 1.6 |
| Edible Vegetables (Jan. 2025=100)..... | 07 | 0.326 | 103.3 | 104.9 | 6.8 | -0.4 | 5.3 | -2.1 | 1.5 |
| Edible fruit and nuts; citrus or melon peels... | 08 | 0.964 | 192.1 | 196.1 | 1.8 | -0.8 | 0.5 | -0.5 | 2.1 |
| Cereals..... | 10 | 1.147 | 225.5 | 229.5 | -1.8 | 1.2 | -1.3 | 0.9 | 1.8 |
| Milling industry products; malt; starches; inulin; wheat gluten (Jan. 2025=100)..... | 11 | 0.060 | 98.5 | 100.0 | -0.5 | 2.4 | -1.6 | -0.5 | 1.5 |
| Oilseeds and misc. grains, seeds, fruits, plants, straw and fodder..... | 12 | 1.441 | 232.6 | 235.1 | 9.4 | 0.0 | 1.6 | 3.0 | 1.1 |
| Animal or vegetable fats and oils (Jan. 2025=100)..... | III | 0.119 | 102.9 | 110.5 | 8.9 | -2.0 | 1.7 | -1.1 | 7.4 |
| Animal or vegetable fats & oils (Jan. 2025=100)..... | 15 | 0.119 | 102.9 | 110.5 | 8.9 | -2.0 | 1.7 | -1.1 | 7.4 |
| Prepared foodstuffs, beverages, and tobacco..... | IV | 2.846 | 186.2 | 188.3 | 3.9 | 0.1 | 0.1 | 0.4 | 1.1 |
| Edible preps of meat, of fish, or of aquatic invertebrates (Jan. 2025=100)..... | 16 | 0.137 | 105.8 | 106.5 | 4.8 | -0.7 | 0.6 | 2.0 | 0.7 |
| Sugars and sugar confectionary (Jan. 2025=100)..... | 17 | 0.152 | 105.0 | 103.5 | 5.3 | -1.9 | 1.0 | 1.4 | -1.4 |
| Cocoa and cocoa preparations (Jan. 2025=100)..... | 18 | 0.196 | 112.4 | 115.1 | 9.8 | -3.1 | 3.6 | -3.6 | 2.4 |
| Preparations of cereals, flour, starch or milk; bakers' wares (Dec. 2023=100)..... | 19 | 0.270 | 107.5 | 107.3 | 4.1 | -0.1 | 2.0 | 0.2 | -0.2 |
| Preparations of vegetables, fruit, nuts or other parts of plants (Jan. 2025=100)..... | 20 | 0.295 | 103.0 | 102.3 | 1.8 | -0.4 | 0.1 | 0.7 | -0.7 |
| Miscellaneous edible preparations (Dec. 2017=100)..... | 21 | 0.548 | 121.0 | 123.3 | 5.4 | 1.2 | -0.6 | -1.5 | 1.9 |
| Beverages, spirits, and vinegar (Dec. 2024=100)..... | 22 | 0.516 | 100.8 | 102.2 | 2.2 | 1.1 | -3.9 | 3.2 | 1.4 |
| Residues and waste from the food industries; prepared animal feed..... | 23 | 0.651 | 243.6 | 247.3 | 3.1 | 0.3 | 1.6 | 0.7 | 1.5 |
| Mineral products..... | V | 17.574 | 309.0 | 354.1 | 26.3 | -1.3 | 7.4 | 8.6 | 14.6 |
| Ores, slag and ash (Dec. 2012=100)..... | 26 | 0.578 | 186.5 | 182.6 | 32.5 | -1.0 | 8.9 | 0.0 | -2.1 |
| Mineral fuels, oils and residuals, bituminous substances and mineral waxes..... | 27 | 16.822 | 293.2 | 338.2 | 26.4 | -1.2 | 7.4 | 9.1 | 15.3 |
| Products of the chemical or allied industries..... | VI | 12.464 | 170.9 | 173.8 | 4.0 | 0.7 | 1.3 | 0.4 | 1.7 |
| Inorganic chemicals (Jan. 2025=100)..... | 28 | 0.963 | 110.1 | 112.9 | 10.9 | 3.5 | 2.2 | -0.6 | 2.5 |
| Organic chemicals (Jan. 2025=100)..... | 29 | 2.640 | 100.2 | 105.6 | 5.5 | -0.6 | 2.7 | 2.2 | 5.4 |
| Pharmaceutical products..... | 30 | 4.739 | 109.8 | 109.5 | 2.0 | 1.6 | 0.3 | 0.4 | -0.3 |
| Fertilizers (Jan. 2025=100)..... | 31 | 0.303 | 109.2 | 112.6 | 7.9 | -2.6 | 0.9 | 0.0 | 3.1 |
| Tanning or dyeing extracts, dyes, paints varnish, putty, & inks (Dec. 2024=100).... | 32 | 0.433 | 110.2 | 110.4 | 1.4 | -1.7 | -0.4 | 0.3 | 0.2 |
| Miscellaneous chemical products..... | 38 | 1.811 | 199.4 | 200.5 | 3.1 | 0.3 | 2.3 | -0.3 | 0.6 |
| Rubber and articles thereof..... | 40 | 0.720 | 198.4 | 197.1 | -0.9 | -2.6 | 1.8 | 0.5 | -0.7 |

See footnotes at end of table.

Table 6. U.S. export price indexes and percent changes for Harmonized categories of goods: April 2025 to April 2026 — Continued
 [2000=100, unless otherwise noted]

| Description | Harmoni- zied system | Relative importance Mar. 2026 ¹ | Index | | Percent change | | | | |
|--|----------------------------|---|--------------|--------------|---------------------------------|---------------------------------|---------------------------------|---------------------------------|---------------------------------|
| | | | Mar. 2026 | Apr. 2026 | Annual | Monthly | | | |
| | | | | | Apr. 2025 to Apr. 2026 | Dec. 2025 to Jan. 2026 | Jan. 2026 to Feb. 2026 | Feb. 2026 to Mar. 2026 | Mar. 2026 to Apr. 2026 |
| Raw hides and skins other than furskins and leather (Jan. 2025=100)..... | 41 | 0.060 | 89.6 | 93.0 | 2.0 | -2.3 | -7.2 | -1.8 | 3.8 |
| Wood, wood charcoal, cork, straw, baskets and wickerwork (Dec. 2014=100)..... | IX | 0.474 | 118.9 | 120.0 | 0.1 | -1.1 | -0.6 | -1.2 | 0.9 |
| Wood and articles of wood; wood charcoal (Dec. 2023=100)..... | 44 | 0.472 | 110.8 | 111.8 | -0.1 | -1.1 | -0.5 | -1.1 | 0.9 |
| Woodpulp, recovered paper, and paper products (Jan. 2025=100)..... | X | 1.346 | 98.9 | 99.9 | -0.6 | -0.7 | 0.7 | 0.4 | 1.0 |
| Woodpulp and recovered paper (Dec. 2019=100)..... | 47 | 0.382 | 159.6 | 159.5 | -9.0 | -1.2 | -0.3 | 2.0 | -0.1 |
| Paper and paperboard; articles of paper pulp, paper or paperboard (Jan. 2025=100)..... | 48 | 0.770 | 99.9 | 101.8 | 2.7 | -0.3 | 0.3 | 0.0 | 1.9 |
| Textile and textile articles (Jan. 2025=100).. | XI | 1.152 | 100.9 | 103.1 | 3.7 | -0.3 | 1.4 | -1.2 | 2.2 |
| Cotton, yarns and woven fabrics thereof.... | 52 | 0.246 | 128.4 | 131.9 | -2.4 | 0.3 | -1.8 | -1.3 | 2.7 |
| Manmade filaments, yarns and woven fabrics (Jan. 2025=100)..... | 54 | 0.068 | 98.1 | 100.0 | -2.5 | -2.5 | 1.9 | -4.2 | 1.9 |
| Manmade staple fibers, yarns and woven fabrics (Jan. 2025=100)..... | 55 | 0.101 | 95.9 | 96.8 | -3.5 | -4.5 | 1.5 | -0.7 | 0.9 |
| Stone, plaster, cement, asbestos, ceramics, glass etc..... | XIII | 0.666 | 166.0 | 167.3 | 6.2 | -0.4 | 1.3 | -0.5 | 0.8 |
| Glass and glassware (Dec. 2019=100)..... | 70 | 0.311 | 119.2 | 120.9 | 5.4 | -1.6 | 1.7 | -1.5 | 1.4 |
| Pearls, stones, precious metals, imitation jewelry, and coins..... | XIV | 5.940 | 575.3 | 554.9 | 36.0 | 7.1 | 6.5 | -1.4 | -3.5 |
| Pearls, precious stones, precious metals; jewelry, coin (Dec. 2023=100)..... | 71 | 5.940 | 184.3 | 177.8 | 36.0 | 7.1 | 6.6 | -1.4 | -3.5 |
| Base metals and articles of base metals. ... | XV | 4.849 | 240.5 | 242.8 | 11.2 | 0.9 | 2.3 | 0.4 | 1.0 |
| Iron and steel (Jan. 2025=100)..... | 72 | 0.983 | 108.1 | 108.9 | 4.9 | -0.3 | 1.4 | 1.5 | 0.7 |
| Copper and articles thereof..... | 74 | 0.742 | 362.5 | 361.0 | 19.5 | 4.2 | 5.9 | -0.9 | -0.4 |
| Aluminum and articles thereof..... | 76 | 0.844 | 187.9 | 191.9 | 17.3 | 0.2 | 4.2 | 0.4 | 2.1 |
| Machinery, electrical equipment, TV image and sound recorders, parts, etc..... | XVI | 26.173 | 112.7 | 113.5 | 2.7 | 0.7 | 0.2 | 0.1 | 0.7 |
| Machinery and mechanical appliances; parts thereof..... | 84 | 15.531 | 139.9 | 140.3 | 2.6 | 1.2 | 0.2 | 0.2 | 0.3 |
| Electrical machinery and equipment and parts and accessories thereof..... | 85 | 10.642 | 84.6 | 85.6 | 2.6 | 0.1 | 0.0 | 0.0 | 1.2 |
| Vehicles, aircraft, vessels and associated transport equipment..... | XVII | 9.402 | 162.5 | 162.7 | 2.6 | 0.1 | 0.2 | 0.1 | 0.1 |
| Motor vehicles and their parts..... | 87 | 6.721 | 135.0 | 135.0 | 2.7 | 0.0 | 0.1 | 0.1 | 0.0 |
| Aircraft, spacecraft, and parts thereof (excluding military) (Dec. 2025=100)..... | 88 | 2.548 | 101.3 | 101.7 | - | 0.7 | 0.5 | 0.1 | 0.4 |
| Miscellaneous manufactured articles..... | XX | 1.048 | 150.0 | 152.8 | 7.2 | 0.1 | 0.5 | 0.1 | 1.9 |
| Furniture; stuffed furnishings; lamps and lighting fittings nesoi..... | 94 | 0.530 | 162.4 | 166.1 | 8.6 | 1.1 | 0.2 | 0.3 | 2.3 |
| Toys, games and sports equipment; parts and accessories thereof..... | 95 | 0.386 | 134.6 | 134.2 | 6.7 | 0.8 | 0.8 | 0.5 | -0.3 |

¹ Relative importance values are based on 2024 trade values.

NOTES: Data may be revised in each of the 3 months after original publication.

Dash = Not available

Table 7. U.S. import price indexes and percent changes by locality of origin: April 2025 to April 2026
 [2000=100, unless otherwise noted]

| Description | Relative importance Mar. 2026 ¹ | Index | | Percent change | | | | |
|---|--|-----------|-----------|------------------------|------------------------|------------------------|------------------------|------------------------|
| | | Mar. 2026 | Apr. 2026 | Annual | Monthly | | | |
| | | | | Apr. 2025 to Apr. 2026 | Dec. 2025 to Jan. 2026 | Jan. 2026 to Feb. 2026 | Feb. 2026 to Mar. 2026 | Mar. 2026 to Apr. 2026 |
| Industrialized Countries² | 100.000 | 153.4 | 157.0 | 6.4 | 1.0 | 1.1 | 0.7 | 2.3 |
| Nonmanufacturing..... | 10.025 | 244.1 | 279.0 | 12.7 | -0.6 | 1.3 | 3.3 | 14.3 |
| Manufacturing..... | 89.500 | 145.7 | 147.2 | 5.6 | 1.1 | 1.1 | 0.3 | 1.0 |
| Canada | 100.000 | 177.6 | 187.6 | 9.4 | 0.6 | 1.1 | 2.5 | 5.6 |
| Nonmanufacturing..... | 29.238 | 237.4 | 273.3 | 13.4 | -0.7 | 1.5 | 3.2 | 15.1 |
| Manufacturing..... | 69.818 | 165.3 | 168.2 | 7.3 | 1.1 | 0.9 | 2.2 | 1.8 |
| European Union | 100.000 | 161.2 | 162.6 | 3.6 | 0.4 | 0.7 | 0.4 | 0.9 |
| Manufacturing..... | 99.333 | 156.7 | 158.0 | 3.5 | 0.3 | 0.8 | 0.4 | 0.8 |
| France (Dec. 2003=100) | 100.000 | 157.0 | 159.8 | -0.1 | -0.6 | 0.1 | 0.4 | 1.8 |
| Germany (Dec. 2003=100) | 100.000 | 131.1 | 131.6 | 4.8 | 1.6 | -0.3 | 0.5 | 0.4 |
| United Kingdom (Dec. 2003=100) | 100.000 | 138.0 | 138.8 | -1.5 | 0.2 | 0.4 | -0.4 | 0.6 |
| Latin America³ | 100.000 | 181.7 | 184.4 | 4.6 | 0.4 | 0.7 | 1.8 | 1.5 |
| Nonmanufacturing..... | 13.441 | 357.2 | 387.6 | 13.3 | 0.5 | 2.7 | 9.7 | 8.5 |
| Manufacturing..... | 86.064 | 146.2 | 146.7 | 3.2 | 0.4 | 0.3 | 0.6 | 0.3 |
| Mexico (Dec. 2003=100) | 100.000 | 152.8 | 154.7 | 3.4 | 0.3 | 0.2 | 1.2 | 1.2 |
| Nonmanufacturing (Dec. 2008=100)..... | 6.753 | 188.7 | 215.3 | 23.1 | 0.1 | 4.7 | 15.1 | 14.1 |
| Manufacturing (Dec. 2008=100)..... | 92.805 | 104.4 | 104.7 | 2.2 | 0.3 | -0.1 | 0.3 | 0.3 |
| Pacific Rim (Dec. 2003=100)⁴ | 100.000 | 103.4 | 104.8 | 2.3 | 0.3 | 1.1 | 0.5 | 1.4 |
| China (Dec. 2003=100) | 100.000 | 98.0 | 98.8 | 0.3 | 0.1 | 0.2 | 0.5 | 0.8 |
| Japan | 100.000 | 102.9 | 103.8 | 1.7 | 0.1 | 0.3 | -0.1 | 0.9 |
| Taiwan (Dec. 2018=100) | 100.000 | 113.9 | 115.6 | 4.0 | 0.4 | 0.9 | 0.6 | 1.5 |
| Asian NICs⁵ | 100.000 | 96.8 | 100.1 | 4.6 | -0.4 | 1.8 | 1.5 | 3.4 |
| ASEAN (Dec. 2003=100)⁶ | 100.000 | 102.6 | 103.2 | 0.4 | -1.0 | 0.5 | 0.3 | 0.6 |
| Asia Near East (Dec. 2003=100)⁷ | 100.000 | 203.6 | 225.3 | 8.5 | 0.5 | -0.1 | 4.1 | 10.7 |

¹ Relative importance values are based on 2024 trade values.

² Western Europe, Canada, Japan, Australia, New Zealand, and South Africa.

³ Mexico, Central America, South America, and the Caribbean.

⁴ China, Japan, Australia, Brunei, Indonesia, Macao, Malaysia, New Zealand, Papua New Guinea, Philippines, and the Asian Newly Industrialized Countries.

⁵ Asian Newly Industrialized Countries - Hong Kong, Singapore, South Korea, and Taiwan.

⁶ Association of Southeast Asian Nations - Brunei, Cambodia, Indonesia, Laos, Malaysia, Myanmar, Philippines, Singapore, Thailand, and Vietnam.

⁷ Bahrain, Iran, Iraq, Israel, Jordan, Kuwait, Lebanon, Oman, Qatar, Saudi Arabia, Syria, United Arab Emirates, and Yemen.

NOTES: Data may be revised in each of the 3 months after original publication.

Regions are not mutually exclusive.

Dash = Not available

Table 8. U.S. export price indexes and percent changes by locality of destination: April 2025 to April 2026
 [December 2017=100, unless otherwise noted]

| Description | Relative importance Mar. 2026 ¹ | Index | | Percent change | | | | |
|---|--|-----------|-----------|-------------------------------|------------------------|------------------------|------------------------|------------------------|
| | | Mar. 2026 | Apr. 2026 | Annual Apr. 2025 to Apr. 2026 | Monthly | | | |
| | | | | | Dec. 2025 to Jan. 2026 | Jan. 2026 to Feb. 2026 | Feb. 2026 to Mar. 2026 | Mar. 2026 to Apr. 2026 |
| Industrialized Countries² | 100.000 | 136.4 | 140.0 | 10.2 | 0.7 | 2.4 | 1.0 | 2.6 |
| Nonmanufacturing..... | 15.192 | 158.5 | 178.8 | 24.7 | -0.7 | 9.0 | 7.7 | 12.8 |
| Manufacturing..... | 82.800 | 132.5 | 133.7 | 7.0 | 0.8 | 1.1 | -0.1 | 0.9 |
| Canada | 100.000 | 139.9 | 142.4 | 7.2 | 0.4 | 1.8 | 0.1 | 1.8 |
| Nonmanufacturing (Dec. 2020=100)..... | 9.306 | 159.9 | 171.7 | 16.1 | 1.8 | 9.0 | 0.7 | 7.4 |
| Manufacturing (Dec. 2020=100)..... | 87.451 | 127.7 | 129.3 | 5.3 | -0.2 | 0.7 | 0.3 | 1.3 |
| European Union | 100.000 | 128.3 | 134.1 | 11.3 | -0.2 | 3.1 | 2.9 | 4.5 |
| Nonmanufacturing..... | 22.106 | 149.5 | 173.5 | 31.5 | -1.2 | 9.6 | 10.4 | 16.1 |
| Manufacturing..... | 76.723 | 123.6 | 125.2 | 5.3 | 0.2 | 1.3 | 0.7 | 1.3 |
| Germany | 100.000 | 140.3 | 143.5 | 13.5 | 1.7 | 3.0 | 1.7 | 2.3 |
| Latin America³ | 100.000 | 129.4 | 134.7 | 8.7 | -0.5 | 1.3 | 2.6 | 4.1 |
| Nonmanufacturing..... | 8.694 | 154.8 | 157.0 | 1.4 | -1.8 | 3.7 | -3.6 | 1.4 |
| Manufacturing..... | 90.843 | 127.7 | 133.2 | 9.4 | -0.3 | 0.9 | 3.3 | 4.3 |
| Mexico | 100.000 | 131.6 | 135.0 | 7.1 | -0.3 | 1.2 | 1.8 | 2.6 |
| Nonmanufacturing..... | 7.710 | 137.7 | 140.0 | 0.2 | -4.0 | 2.4 | -6.1 | 1.7 |
| Manufacturing..... | 91.686 | 132.3 | 135.7 | 7.8 | 0.1 | 1.1 | 2.5 | 2.6 |
| Pacific Rim⁴ | 100.000 | 120.5 | 124.3 | 8.2 | 0.9 | 1.7 | 1.3 | 3.2 |
| Nonmanufacturing..... | 20.501 | 118.4 | 133.2 | 20.0 | 0.9 | 5.1 | 6.1 | 12.5 |
| Manufacturing..... | 77.527 | 122.4 | 123.5 | 5.1 | 1.1 | 0.8 | 0.2 | 0.9 |
| China | 100.000 | 113.0 | 115.4 | 4.8 | 1.2 | -0.1 | 1.8 | 2.1 |
| Nonmanufacturing..... | 22.736 | 96.6 | 106.8 | 8.9 | 0.4 | 0.2 | 0.2 | 10.6 |
| Manufacturing..... | 74.804 | 120.8 | 120.1 | 2.9 | 1.3 | -0.3 | 2.4 | -0.6 |
| Japan | 100.000 | 121.8 | 125.4 | 9.1 | 1.4 | 2.6 | -0.6 | 3.0 |
| Nonmanufacturing..... | 20.322 | 116.0 | 123.0 | 1.4 | 1.4 | 8.8 | -8.1 | 6.0 |
| Manufacturing..... | 78.356 | 122.6 | 125.4 | 10.7 | 1.8 | 0.9 | 1.4 | 2.3 |

¹ Relative importance values are based on 2024 trade values.

² Western Europe, Canada, Japan, Australia, New Zealand, and South Africa.

³ Mexico, Central America, South America, and the Caribbean.

⁴ China, Japan, Australia, Brunei, Indonesia, Macao, Malaysia, New Zealand, Papua New Guinea, Philippines, and the Asian Newly Industrialized Countries.

NOTES: Data may be revised in each of the 3 months after original publication.

Regions are not mutually exclusive.

Dash = Not available

Table 9. U.S. terms of trade indexes and percent changes by locality: April 2025 to April 2026¹
 [December 2017=100, unless otherwise noted]

| Description | Index | | Percent change | | | | |
|---|-----------|-----------|------------------------|------------------------|------------------------|------------------------|------------------------|
| | Mar. 2026 | Apr. 2026 | Annual | Monthly | | | |
| | | | Apr. 2025 to Apr. 2026 | Dec. 2025 to Jan. 2026 | Jan. 2026 to Feb. 2026 | Feb. 2026 to Mar. 2026 | Mar. 2026 to Apr. 2026 |
| Industrialized Countries² | 108.8 | 109.1 | 3.5 | -0.3 | 1.3 | 0.4 | 0.3 |
| Canada | 103.5 | 99.7 | -2.0 | -0.2 | 0.7 | -2.3 | -3.7 |
| European Union | 107.1 | 111.0 | 7.5 | -0.6 | 2.3 | 2.4 | 3.6 |
| Germany | 123.2 | 125.5 | 8.4 | 0.2 | 3.3 | 1.2 | 1.9 |
| Latin America³ | 106.0 | 108.8 | 4.0 | -0.9 | 0.6 | 0.8 | 2.6 |
| Mexico | 111.1 | 112.6 | 3.7 | -0.6 | 1.0 | 0.5 | 1.4 |
| Pacific Rim⁴ | 114.7 | 116.7 | 5.7 | 0.5 | 0.6 | 0.9 | 1.7 |
| China | 115.4 | 116.9 | 4.5 | 1.1 | -0.3 | 1.2 | 1.3 |
| Japan | 113.0 | 115.4 | 7.3 | 1.3 | 2.3 | -0.5 | 2.1 |

¹ Terms of trade indexes are derived by dividing the export price index by the corresponding import price index and multiplying by 100.

² Western Europe, Canada, Japan, Australia, New Zealand, and South Africa.

³ Mexico, Central America, South America, and the Caribbean.

⁴ China, Japan, Australia, Brunei, Indonesia, Macao, Malaysia, New Zealand, Papua New Guinea, Philippines, and the Asian Newly Industrialized Countries.

NOTES: Data may be revised in each of the 3 months after original publication.

Regions are not mutually exclusive.

Dash = Not available

Table 10. U.S. international price indexes and percent changes for selected transportation services: April 2025 to April 2026

[2000=100, unless otherwise noted]

| Description | Relative importance Mar. 2026 ¹ | Index | | Percent change | | | | |
|---|--|-----------|-----------|------------------------|------------------------|------------------------|------------------------|------------------------|
| | | Mar. 2026 | Apr. 2026 | Annual | Monthly | | | |
| | | | | Apr. 2025 to Apr. 2026 | Dec. 2025 to Jan. 2026 | Jan. 2026 to Feb. 2026 | Feb. 2026 to Mar. 2026 | Mar. 2026 to Apr. 2026 |
| Air Freight | | | | | | | | |
| Import Air Freight | 100.000 | 251.6 | 253.8 | 3.2 | -4.5 | -1.2 | -1.7 | 0.9 |
| Europe (Dec. 2003=100)..... | 39.064 | 217.0 | 212.6 | 12.4 | 1.8 | -0.8 | 6.6 | -2.0 |
| Asia..... | 58.423 | 239.8 | 244.9 | -0.8 | -9.3 | -1.4 | -7.6 | 2.1 |
| Export Air Freight | 100.000 | 172.2 | 186.8 | 4.6 | 3.4 | 1.6 | -0.1 | 8.5 |
| Europe (Dec. 2006=100)..... | 37.583 | 126.1 | 133.3 | 2.9 | 5.0 | 1.0 | -5.0 | 5.7 |
| Asia (Dec. 2011=100)..... | 43.422 | 130.9 | 143.0 | 2.8 | -2.3 | 2.4 | 1.6 | 9.2 |
| Inbound Air Freight | 100.000 | 185.9 | 194.3 | 3.1 | -3.6 | -1.7 | 2.6 | 4.5 |
| Europe (Dec. 2003=100)..... | 34.635 | 184.3 | 180.8 | 14.2 | 3.2 | -2.5 | 9.2 | -1.9 |
| Asia..... | 52.094 | 164.4 | 179.5 | 1.1 | -8.7 | -1.7 | -3.6 | 9.2 |
| Outbound Air Freight | 100.000 | 158.0 | 178.6 | 6.8 | 2.2 | 0.6 | -1.2 | 13.0 |
| Europe (Dec. 2003=100)..... | 35.567 | 157.4 | 170.8 | 4.7 | 5.4 | -1.3 | -4.5 | 8.5 |
| Asia..... | 36.939 | 160.7 | 178.6 | 0.1 | 0.1 | 2.4 | 0.8 | 11.1 |
| Air Passenger Fares | | | | | | | | |
| Import Air Passenger Fares | 100.000 | 175.8 | 171.1 | 1.6 | -10.1 | -0.4 | 2.0 | -2.7 |
| Europe..... | 46.817 | 207.0 | 200.0 | 11.3 | 0.9 | 0.6 | 2.8 | -3.4 |
| Asia..... | 19.556 | 156.2 | 154.0 | 1.5 | -18.4 | -10.2 | 20.5 | -1.4 |
| Latin America/Caribbean..... | 9.636 | 158.0 | 162.2 | 5.1 | -19.3 | 10.3 | 2.3 | 2.7 |
| Export Air Passenger Fares | 100.000 | 181.5 | 191.0 | 5.4 | 13.2 | -11.9 | 5.6 | 5.2 |
| Europe..... | 32.685 | 218.0 | 213.7 | -1.9 | 7.8 | -7.8 | 5.7 | -2.0 |
| Asia..... | 17.039 | 160.6 | 180.4 | 7.1 | 19.3 | -20.5 | 7.7 | 12.3 |
| Latin America/Caribbean..... | 29.833 | 187.4 | 213.7 | 11.5 | 26.4 | -16.0 | 4.0 | 14.0 |

¹ Relative importance values are based on 2024 trade values.

NOTES: Data may be revised in each of the 3 months after original publication.

Dash = Not available

TECHNICAL NOTE

Import and Export Goods and Services Price Indexes - All indexes use a modified Laspeyres formula and are not seasonally adjusted. Price indexes are reweighted annually, with a 2-year lag in the weights. Published series use a base year of 2000=100 where possible. More detailed index series and additional information may be obtained at www.bls.gov/mxp or by calling (202) 691-7101.

Merchandise Goods Classification Systems - The merchandise price indexes are published using three classification systems. Items are classified by end use according to the Bureau of Economic Analysis Classification System, by industry according to the North American Industry Classification System (NAICS), and by product category according to the Harmonized System (HS). While classification by end use and product category are self-explanatory, some notes are in order for classifying items by industry. In the NAICS imports and exports tables, items are classified by output industry, not input industry. As an example, NAICS import index 326 (plastics and rubber products manufacturing) includes outputs such as manufactured plastic rather than inputs such as petroleum. The NAICS classification structure also matches the classification system used by the Producer Price Index (PPI) to produce the NAICS primary products indexes.

Import Price Goods Indexes - Items are classified by the Harmonized Tariff Schedule of the United States Annotated (TSUSA). Import prices are based on U.S. dollar prices paid by the U.S. importer. The prices are generally either "free on board" (f.o.b.) foreign port or "cost, insurance, and freight" (c.i.f.) U.S. port transaction prices, depending on the practices of the individual industry.

Export Price Goods Indexes - Items are classified by the Harmonized Schedule B classification system of the U.S. Bureau of the Census. The prices used are generally either "free alongside ship" (f.a.s.) factory or "free on board" (f.o.b.) transaction prices, depending on the practices of the individual industry.

Services Price Indexes - Indexes for import and export air passenger fares calculate changes in the average revenue received per passenger by foreign carriers from U.S. residents and by U.S. carriers from foreign residents, respectively. The air freight indexes are calculated from data collected directly from airlines. These data exclude mail and passenger baggage. The scope of the service being priced is the movement of freight from airport to airport only and does not include any ground transportation or port service. The air freight indexes are presented using two definitions: balance of payments (which represents transactions between U.S. and foreign residents) and international (which represents transactions inbound to and outbound from the United States.)

Import Price Indexes by Locality of Origin - Prices used in these indexes are a subset of the data collected for the import price indexes. The indexes are specific to a country, region, or grouping and, beginning with January 2002, are based on the North American Industry Classification System (NAICS) covering goods-producing industries. Nonmanufactured goods are defined as NAICS 11 and 21, and manufactured goods are defined as NAICS 31-33.

Export Price Indexes by Locality of Destination - Prices used in these indexes are a subset of the data collected for the export price indexes. The indexes are specific to a country, region, or grouping and are based on the North American Industry Classification System (NAICS) covering goods-producing industries. Nonmanufactured goods are defined as NAICS 11 and 21, and manufactured goods are defined as NAICS 31-33.

Terms of Trade Indexes - Terms of trade indexes measure the relative price of exports in terms of import prices for a specific country, region, or grouping. The indexes are calculated as one country, region, or grouping's all-export goods price index divided by the corresponding all-import goods price index on a scale of 100.

Relative Importance - A relative importance is a specific index's price-updated value share (expressed as a percentage) of overall imports or exports at a specific point in time. Relative importance values are affected by the trade weights at the point indexes are reweighted and index changes relative to other indexes since the reweight point. If an index is rising in value relative to other indexes over time, the relative importance will increase as well.

Revision Policy - To reflect the availability of late reports and corrections by respondents, monthly data may be revised in each of the 3 months after original publication. After 3 months, no further data revisions take place. For example, data first published in the January release will be subject to revision in the releases for February, March, and April.

Rounding Policy - Index values are rounded to the tenth decimal place after being calculated. All percent changes are then derived from the rounded index values and subsequently rounded to the tenth decimal place.

Uses of the Data - The primary use of the indexes is to deflate trade statistics, notably the foreign trade sector of the National Income and Product Accounts (NIPA) constructed by the Department of Commerce. Other published indexes are useful for general market analysis. For trade in international services, balance of payments indexes are used for deflating NIPA, while international indexes are more appropriate for market analysis.

Additional Information - More detailed data are available on the Import/Export Price Indexes home page at www.bls.gov/mxp. For import and export price indexes data requests, send an email to mxpinfo@bls.gov.

If you are deaf, hard of hearing, or have a speech disability, please dial 7-1-1 to access telecommunications relay services.