



Transmission of material in this release is embargoed until
8:30 a.m. (ET) Wednesday, April 15, 2026

USDL-26-0620

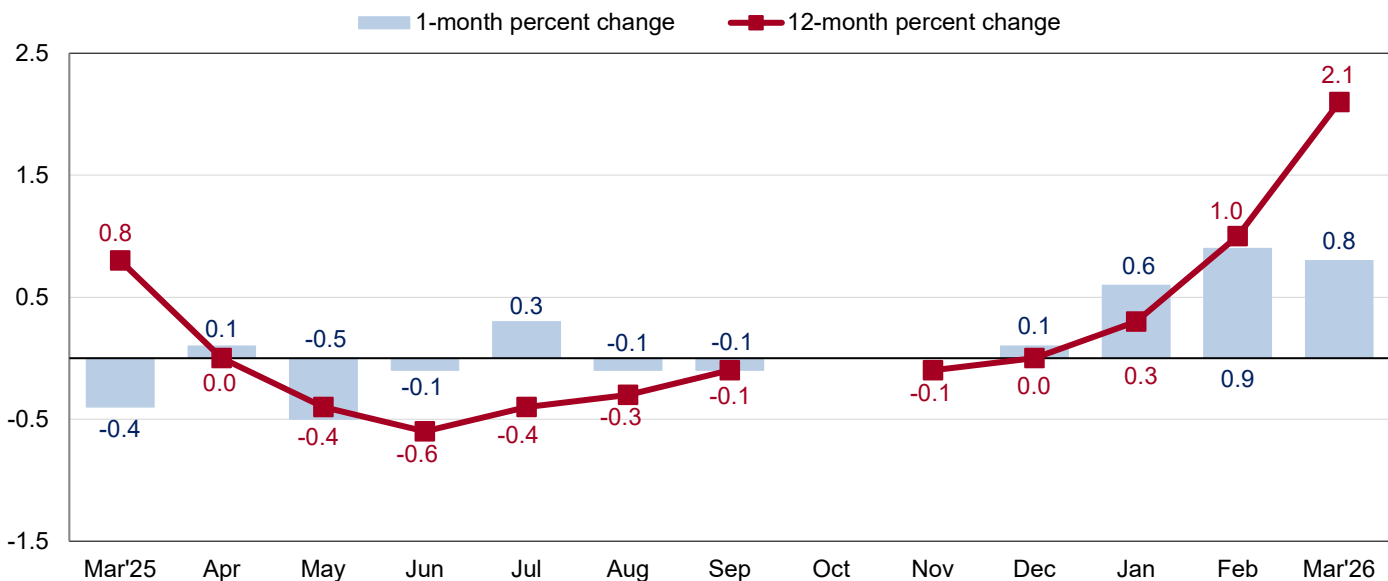
Technical information: (202) 691-7101 • MXPinfo@bls.gov • www.bls.gov/mxp
Media contact: (202) 691-5902 • PressOffice@bls.gov

U.S. IMPORT AND EXPORT PRICE INDEXES - MARCH 2026

U.S. import prices increased 0.8 percent in March, the U.S. Bureau of Labor Statistics reported today, following a 0.9-percent rise in February. Higher prices for nonfuel imports and fuel imports drove the advance in March. Prices for U.S. exports rose 1.6 percent in March, after increasing 1.9 percent the previous month.

Imports

Chart 1. One-month and 12-month percent changes in the Import Price Index: March 2025 – March 2026



Note: The Oct and Nov 2025 data values are not available due to the 2025 lapse in appropriations.

U.S. import prices rose 0.8 percent in March, following increases of 0.9 percent in February and 0.6 percent in January. Prices for U.S. imports advanced 2.1 percent from March 2025 to March 2026. The 12-month increase in U.S. import prices was the largest over-the-year advance since the index rose 2.2 percent in December 2024. (See All commodities in table 1.)

Changes to source data for import natural gas prices

Effective with this release, directly collected data for import natural gas prices is replaced with non-survey sources for price index calculation. This transition to an alternative data source did not create a break in series with previously published price indexes. For additional information see www.bls.gov/mxp/publications/additional-publications/natural-gas-facts.htm.

Fuel Imports: Import prices for fuels and lubricants increased 2.9 percent in March, following an advance of 2.4 percent in February. The March increase was the largest monthly advance since the index rose 3.0 percent in January 2025. Higher prices for petroleum more than offset lower prices for natural gas. In March, prices for import petroleum and petroleum products advanced 9.4 percent. Natural gas import prices declined 71.0 percent in March, after rising 77.3 percent over the prior 3 months. Despite March's increase, import fuels and lubricants prices decreased 6.0 percent over the past 12 months. The price index for import petroleum and petroleum products declined 4.2 percent from March 2025 to March 2026. Prices for import natural gas fell 49.8 percent over the same period.

All Imports Excluding Fuel: Prices for nonfuel imports advanced 0.6 percent in March, following a rise of 0.8 percent in February. Higher prices for nonfuel industrial supplies and materials; capital goods; consumer goods excluding automobiles; and foods, feeds, and beverages drove the increase. Nonfuel import prices advanced 2.8 percent on a 12-month basis. The March increase was the largest over-the-year advance since the index rose 2.9 percent in October 2022. Higher prices for nonfuel industrial supplies and materials, capital goods, and consumer goods excluding automobiles more than offset lower prices for foods, feeds, and beverages as well as for automotive vehicles, parts and engines from March 2025 to March 2026.

Foods, Feeds, and Beverages: Import foods, feeds, and beverages prices advanced 0.5 percent in March, following increases of 0.3 percent in February and 0.4 percent in January. Higher prices for vegetables; fruit; fish and shellfish; as well as for cane and beet sugar contributed to the increase in March.

Nonfuel Industrial Supplies and Materials: Import prices for nonfuel industrial supplies and materials increased 1.6 percent in March, after a 2.2-percent advance in February. Higher prices for finished metals shapes and advanced manufacturing and for major nonferrous metals-crude drove the advance.

Finished Goods: Prices for the major finished goods import categories were mostly up in March. Import capital goods prices increased 0.5 percent in March. Higher import prices for computers, peripherals and semiconductors; civilian aircraft, engines, and parts; and industrial and service machinery contributed to the advance. The price index for import consumer goods excluding automobiles rose 0.4 percent in March. Higher prices for medicinal, dental and pharmaceutical preparatory materials drove the overall increase in import consumer goods excluding automobiles prices. The price index for automotive vehicles, parts and engines recorded no change in March.

Table A. Percent change in Import and Export Price Indexes, selected categories

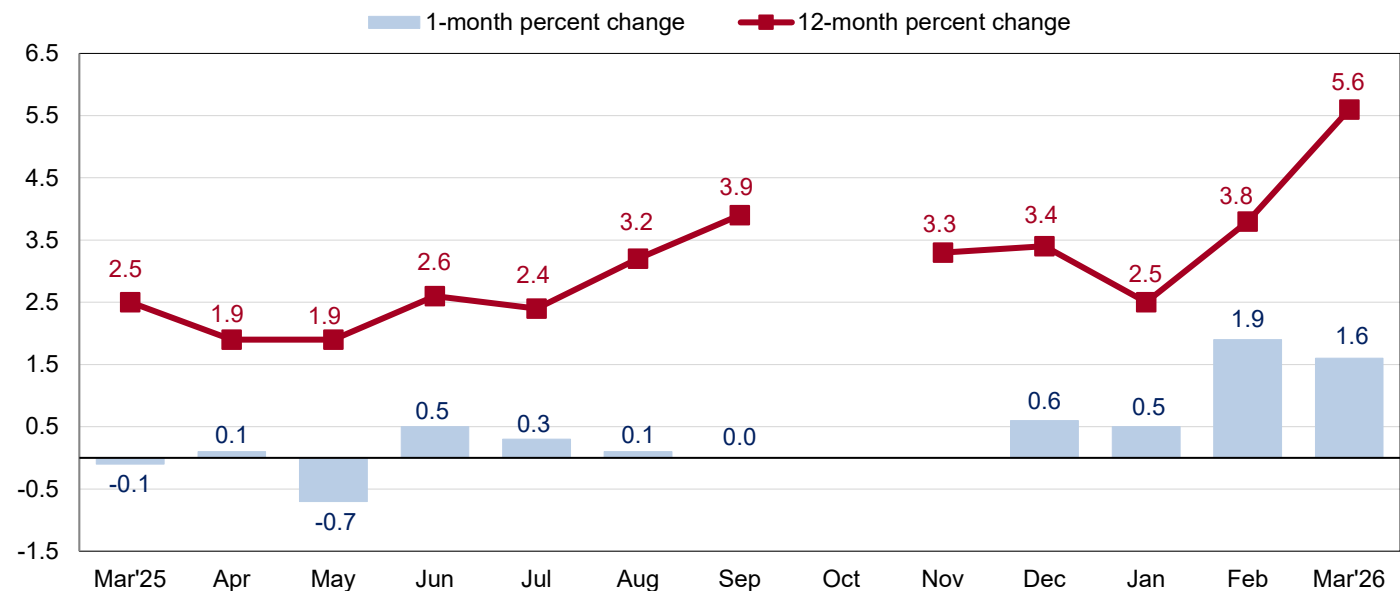
Month	IMPORTS			EXPORTS		
	All imports	Fuel imports	Nonfuel imports	All exports	Agricultural exports	Non-agricultural exports
2025						
March.....	-0.4	-3.4	-0.1	-0.1	-0.2	0.0
April.....	0.1	-2.6	0.3	0.1	0.3	0.0
May.....	-0.5	-5.0	-0.1	-0.7	0.2	-0.8
June.....	-0.1	0.6	-0.3	0.5	0.8	0.6
July.....	0.3	2.7	0.2	0.3	-0.2	0.3
August.....	-0.1	-0.7	-0.2	0.1	-0.1	0.2
September.....	-0.1	-1.5	0.0	0.0	-0.5	0.1
October.....	—	—	—	—	0.4	—
November.....	—	—	—	—	0.8	—
December.....	0.1	-1.1	0.2	0.6	-0.2	0.7
2026						
January.....	0.6	-1.2	0.8	0.5 ^r	0.1 ^r	0.5 ^r
February.....	0.9 ^r	2.4 ^r	0.8 ^r	1.9 ^r	0.9 ^r	2.1 ^r
March.....	0.8	2.9	0.6	1.6	0.9	1.7
Mar. 2024 to 2025.....	0.8	-6.0	1.4	2.5	1.1	2.6
Mar. 2025 to 2026.....	2.1	-6.0	2.8	5.6	3.4	5.8

^r Revised

Some Oct and Nov 2025 data values are not available due to the 2025 lapse in appropriations.

Exports

Chart 2. One-month and 12-month percent changes in the Export Price Index: March 2025 – March 2026



Note: The Oct and Nov 2025 data values are not available due to the 2025 lapse in appropriations.

Prices for U.S. exports advanced 1.6 percent in March. Higher prices for nonagricultural exports and agricultural exports drove the increase. U.S. export prices rose 5.6 percent for the 12-month period ended March 2026. The March advance was the largest over-the-year increase since the index rose 6.1 percent in November 2022. (See All commodities in table 2.)

Agricultural Exports: The price index for agricultural exports increased 0.9 percent in March, following a 0.9-percent rise in February. Higher prices for soybeans, fruit, and meat drove the advance in agricultural exports in March. The price index for agricultural exports increased 3.4 percent over the past 12 months, as higher prices for soybeans; other foods and food preparations; and meat more than offset lower prices for corn.

All Exports Excluding Agriculture: Export prices for nonagricultural commodities increased 1.7 percent in March, after rising 2.1 percent in February. Higher prices for nonagricultural industrial supplies and materials more than offset lower prices for capital goods and for consumer goods excluding automobiles. Nonagricultural commodities export prices advanced 5.8 percent from March 2025 to March 2026. Higher prices for nonagricultural industrial supplies and materials, capital goods, and consumer goods excluding automobiles contributed to the 12-month increase.

Nonagricultural Industrial Supplies and Materials: Nonagricultural industrial supplies and materials prices increased 4.3 percent in March, after an advance of 4.9 percent the previous month. Higher export prices for crude petroleum, other petroleum products, and fuel oil more than offset lower export prices for natural gas and for nonmonetary gold.

Finished Goods: Prices for the major finished goods export categories were mostly down in March. Capital goods prices decreased 0.2 percent in March. Lower prices for semiconductors and for other industrial machinery more than offset higher prices for computers. In March, export prices for consumer goods excluding automobiles declined 0.2 percent, the first monthly decrease for the price index since September 2025. The price index for automotive vehicles, parts and engines recorded no change in March.

More information for the major import and export price indexes can be found at www.bls.gov/web/ximpim/largest.htm.

Measures of Import and Export Prices by Locality

Imports by Locality of Origin: Import prices from China increased 0.7 percent in March, the largest monthly advance since December 2021. Despite the monthly rise, the price index for imports from China declined 1.1 percent over the past 12 months. Prices for imports from Japan decreased 0.2 percent in March, following an increase of 0.2 percent in February. The price index for imports from Japan advanced 0.4 percent from March 2025 to March 2026. Import prices from the European Union and Mexico rose 0.3 percent and 0.8 percent, respectively, in March. In contrast, prices for imports from Canada edged down 0.1 percent over the same period. (See table 7.)

Exports by Locality of Destination: Prices for exports to China increased 2.3 percent in March, following a decline of 0.4 percent in February. The March advance was the largest monthly increase since the index rose 2.4 percent in October 2024. The price index for exports to China increased 3.6 percent over the past 12 months. Prices for exports to Japan decreased 0.5 percent in March, following advances of 2.4 percent in February and 1.4 percent in January. The price index for exports to Japan rose 5.6 percent from March 2025 to March 2026. Export prices to the European Union advanced 2.6 percent in March and the price index for exports to Canada increased 0.8 percent over the same period. Prices for exports to Mexico advanced 3.2 percent in March, the largest monthly increase since a 4.7-percent rise in May 2022. (See table 8.)

Terms of Trade Indexes: Terms of trade indexes are based on country, region, or grouping and measure the change in the purchasing power of exports relative to imports. The U.S. terms of trade index with China increased 1.6 percent in March, following a 0.6-percent decrease in February. The index for U.S. terms of trade with Japan declined 0.3 percent in March, after increasing 2.3 percent the previous month. The U.S. terms of trade index with the European Union increased 2.3 percent in March, after rising 2.4 percent in February. In March, the U.S. terms of trade index with Canada increased 0.8 percent and the index for U.S. terms of trade with Mexico advanced 2.4 percent. (See table 9.)

Import and Export Services

Imports: Import air passenger fares advanced 2.0 percent in March, after decreasing 0.4 percent in February. Higher Asian, European, and Latin American/Caribbean fares drove the overall increase in import air passenger fares in March. Import air passenger fares increased 1.3 percent from March 2025 to March 2026. Prices for import air freight fell 2.0 percent in March, following a 2.9-percent decline in February. Lower prices for import Asian air freight more than offset higher prices for import European air freight in March. Despite the monthly decrease, import air freight prices advanced 8.3 percent for the year ended March 2026. (See table 10.)

Exports: Export air passenger fares increased 5.6 percent in March, following an 11.9-percent decrease the previous month. Higher European, Asian, and Latin American/Caribbean fares in March contributed to the overall advance in export air passenger fares. The price index for export air passenger fares advanced 1.3 percent from March 2025 to March 2026, the largest over-the-year increase since the index rose 3.6 percent in January 2025. Export air freight prices recorded no change in March, after advancing 1.6 percent in February. The price index for export air freight declined 2.5 percent over the past year.

U.S. Import and Export Price Index data for April 2026 are scheduled for release on Thursday, May 14, 2026, at 8:30 a.m. (ET).

Table 1. U.S. import price indexes and percent changes for End Use categories of goods: March 2025 to March 2026

[2000=100, unless otherwise noted]

Description	End Use	Relative importance Feb. 2026 ¹	Index		Percent change				
			Feb. 2026	Mar. 2026	Annual	Monthly			
					Mar. 2025 to Mar. 2026	Nov. 2025 to Dec. 2025	Dec. 2025 to Jan. 2026	Jan. 2026 to Feb. 2026	Feb. 2026 to Mar. 2026
All commodities		100.000	143.5	144.6	2.1	0.1	0.6	0.9	0.8
All imports excluding food and fuels (Dec. 2010=100)		86.009	112.4	113.1	3.5	0.3	0.7	0.9	0.6
All imports excluding petroleum		93.752	129.2	129.3	2.6	0.4	0.8	0.9	0.1
All imports excluding fuels (Dec. 2001=100)		92.894	132.8	133.6	2.8	0.2	0.8	0.8	0.6
Foods, feeds, & beverages	0	6.885	226.6	227.8	-3.4	0.4	0.4	0.3	0.5
Agricultural foods, feeds & beverages, excluding distilled beverages.....	00	5.705	258.0	259.3	-2.4	0.5	0.2	0.2	0.5
Nonagricultural foods (fish, distilled beverages).....	01	1.180	149.7	150.7	-8.1	-0.3	1.0	0.8	0.7
Industrial supplies & materials	1	22.087	252.8	257.9	4.6	0.6	1.1	2.3	2.0
Industrial supplies & materials excluding petroleum.....		15.917	233.0	230.0	8.9	2.4	2.8	2.1	-1.3
Industrial supplies & materials excluding fuels (Dec. 2001=100).....		14.976	257.8	262.0	10.7	1.5	2.3	2.2	1.6
Industrial supplies & materials, durable....		10.364	267.3	273.8	18.1	3.0	3.3	2.7	2.4
Industrial supplies & materials nondurable excluding petroleum.....		5.476	191.4	175.8	-6.0	1.5	1.9	1.0	-8.2
Fuels & lubricants.....	10	7.106	244.9	252.1	-6.0	-1.1	-1.2	2.4	2.9
Petroleum & petroleum products.....	100	6.248	251.4	275.0	-4.2	-3.1	-2.7	2.7	9.4
Crude petroleum.....	10000	4.376	253.5	273.3	-7.8	-3.1	-2.6	2.2	7.8
Fuels, n.e.s.-coals & gas.....	101	0.613	271.2	106.0	-38.3	34.3	15.1	1.5	-60.9
Natural gas.....	10110	0.532	286.5	83.2	-49.8	47.9	17.7	1.8	-71.0
Paper & paper base stocks.....	11	0.429	128.6	127.6	-6.0	-0.7	-0.4	0.7	-0.8
Materials associated with nondurable supplies & materials.....	12	4.188	200.6	200.2	-2.6	-1.4	0.2	1.2	-0.2
Selected building materials (Jan. 2025=100).....	13	1.381	93.7	94.5	-5.3	-0.3	0.5	1.3	0.9
Unfinished metals related to durable goods.....	14	4.303	450.3	460.4	33.2	4.4	4.1	5.3	2.2
Finished metals related to durable goods.....	15	3.094	285.5	295.6	20.0	4.7	4.9	1.2	3.5
Nonmetals related to durable goods (Jan. 2025=100).....	16	1.586	98.7	101.0	3.0	-1.0	0.7	0.2	2.3
Capital goods	2	31.152	96.9	97.4	4.1	0.0	0.6	1.3	0.5
Nonelectrical machinery.....	21	24.475	87.4	88.0	4.6	-0.1	0.7	1.4	0.7
Transportation equipment excluding motor vehicles (Dec. 2001=100).....	22	1.992	163.6	165.2	2.1	0.1	-0.1	0.2	1.0
Automotive vehicles, parts & engines	3	14.804	120.7	120.7	-0.8	0.0	0.5	0.1	0.0
Automotive vehicles, parts and engines, 2 digit (Dec. 2023=100).....	30	14.804	101.3	101.4	-0.8	0.0	0.4	0.1	0.1
Consumer goods, excluding automotives	4	25.073	110.5	110.9	1.2	0.0	0.1	0.2	0.4
Nondurables, manufactured.....	40	13.530	126.2	127.0	0.6	-0.3	-0.2	0.0	0.6
Durables, manufactured.....	41	10.776	95.6	95.9	2.0	0.3	0.5	0.3	0.3
Nonmanufactured consumer goods.....	42	0.766	127.2	123.0	-1.0	0.6	0.8	0.4	-3.3

¹ Relative importance values are based on 2024 trade values.

NOTES: Data may be revised in each of the 3 months after original publication.

Dash = Not available

Table 2. U.S. export price indexes and percent changes for End Use categories of goods: March 2025 to March 2026

[2000=100, unless otherwise noted]

Description	End Use	Relative importance Feb. 2026 ¹	Index		Percent change				
			Feb. 2026	Mar. 2026	Annual	Monthly			
					Mar. 2025 to Mar. 2026	Nov. 2025 to Dec. 2025	Dec. 2025 to Jan. 2026	Jan. 2026 to Feb. 2026	Feb. 2026 to Mar. 2026
All commodities.....		100.000	158.4	161.0	5.6	0.6	0.5	1.9	1.6
Agricultural commodities.....		8.880	235.1	237.3	3.4	-0.2	0.1	0.9	0.9
All exports excluding food and fuels (Dec. 2010=100).....		74.934	125.3	125.3	5.5	0.3	0.9	0.9	0.0
All exports excluding fuels (June 2022=100).....		83.383	108.0	108.1	5.4	0.4	0.8	0.8	0.1
Nonagricultural commodities.....		91.120	152.3	154.9	5.8	0.7	0.5	2.1	1.7
Foods, feeds, & beverages.....	0	8.450	241.9	244.5	4.1	0.0	-0.1	1.2	1.1
Agricultural foods, feeds & beverages, excluding distilled beverages.....	00	7.986	243.2	245.8	3.9	-0.1	-0.1	1.2	1.1
Nonagricultural foods (fish, distilled beverages).....	01	0.463	214.8	217.7	6.2	1.3	0.8	0.8	1.4
Industrial supplies & materials.....	1	39.013	220.3	229.3	10.2	1.3	0.5	4.8	4.1
Industrial supplies & materials excluding fuels (Dec. 2020=100).....		22.321	141.0	141.4	13.1	0.7	1.7	2.7	0.3
Industrial supplies & materials, durable....		12.946	298.1	297.2	26.1	1.8	2.8	4.0	-0.3
Industrial supplies & materials, nondurable.....		26.067	190.6	202.6	4.0	1.1	-0.6	5.1	6.3
Agricultural industrial supplies & materials.....	10	0.893	190.4	190.8	-0.9	-0.5	1.8	-2.1	0.2
Nonagricultural industrial supplies & materials.....		38.120	221.1	230.5	10.6	1.4	0.5	4.9	4.3
Fuels & lubricants.....	11	16.617	233.3	255.0	6.2	2.3	-1.2	7.7	9.3
Nonagricultural supplies & materials excluding fuels & building materials.....	12	20.754	239.6	240.2	14.1	0.7	1.9	3.0	0.3
Selected building materials.....	13	0.749	164.6	165.2	6.6	2.0	-1.6	1.4	0.4
Capital goods.....	2	31.835	127.5	127.3	2.0	0.1	0.7	-0.1	-0.2
Nonelectrical machinery.....	21	21.875	105.2	104.7	1.2	0.0	0.4	-0.2	-0.5
Transportation equipment excluding motor vehicles (Dec. 2001=100).....	22	6.199	230.0	230.5	2.7	0.0	1.7	-0.3	0.2
Automotive vehicles, parts & engines.....	3	8.101	134.2	134.2	2.4	0.1	0.1	0.1	0.0
Vehicles-passenger (Dec. 2023=100).....	30	8.101	105.6	105.6	2.4	0.1	0.1	0.1	0.0
Consumer goods, excluding automotives.....	4	12.601	123.1	122.9	3.5	0.9	0.4	0.6	-0.2
Nondurables, manufactured.....	40	7.406	112.6	112.9	3.6	0.5	0.9	0.6	0.3
Durables, manufactured.....	41	4.435	129.1	129.1	5.1	1.6	-0.2	0.5	0.0
Nonmanufactured consumer goods (Dec. 2018=100).....	42	0.761	118.1	112.7	-5.5	0.0	0.1	0.0	-4.6

¹ Relative importance values are based on 2024 trade values.

NOTES: Data may be revised in each of the 3 months after original publication.

Dash = Not available

Table 3. U.S. import price indexes and percent changes for NAICS industries: March 2025 to March 2026
 [December 2005=100, unless otherwise noted]

Description	NAICS	Relative importance Feb. 2026 ¹	Index		Percent change				
			Feb. 2026	Mar. 2026	Annual	Monthly			
					Mar. 2025 to Mar. 2026	Nov. 2025 to Dec. 2025	Dec. 2025 to Jan. 2026	Jan. 2026 to Feb. 2026	Feb. 2026 to Mar. 2026
Nonmanufacturing		7.305	141.9	142.1	-8.4	0.3	-0.1	1.6	0.1
Agriculture, forestry, fishing and hunting	11	2.084	254.8	260.9	-4.5	0.6	1.6	0.7	2.4
Crop production.....	111	1.714	269.1	276.1	-5.2	0.9	1.4	0.6	2.6
Animal production (Dec. 2022=100).....	112	0.231	131.5	132.6	1.1	-0.5	6.2	-0.4	0.8
Forestry and logging (Jan. 2025=100)....	113	0.095	90.2	90.0	-8.1	2.7	-5.3	3.4	-0.2
Fishing, hunting and trapping (Jan. 2025=100).....	114	0.044	96.3	104.7	0.3	-10.3	2.5	6.5	8.7
Mining	21	5.221	126.8	125.8	-9.9	0.2	-1.0	2.1	-0.8
Oil and gas extraction.....	211	5.010	123.8	122.8	-10.6	0.1	-0.8	2.1	-0.8
Mining (except oil and gas) (Dec. 2022=100).....	212	0.211	128.1	129.2	7.0	3.5	-3.1	0.8	0.9
Manufacturing		92.347	125.4	126.3	2.8	0.2	0.6	0.9	0.7
Manufacturing, part 1	31	10.183	139.1	139.4	-2.4	-0.5	-0.6	0.1	0.2
Food manufacturing.....	311	4.510	204.3	204.1	-1.5	0.0	-1.1	-0.2	-0.1
Beverage and tobacco product manufacturing.....	312	0.914	124.1	123.2	-12.1	-1.1	0.9	2.0	-0.7
Textile mills (Dec. 2023=100).....	313	0.282	100.1	102.6	0.7	-1.2	0.3	0.5	2.5
Textile product mills (Dec. 2023=100)....	314	0.694	95.1	97.3	-2.2	-1.1	0.8	1.2	2.3
Apparel manufacturing.....	315	2.520	114.0	113.6	-2.6	-1.3	-1.0	-0.1	-0.4
Manufacturing, part 2	32	18.702	137.2	139.7	0.1	-0.7	0.1	0.5	1.8
Wood product manufacturing (Jan. 2025=100).....	321	0.719	91.5	92.2	-8.1	-1.5	0.9	1.9	0.8
Paper manufacturing.....	322	0.770	112.7	113.3	-2.9	-0.8	0.1	0.3	0.5
Petroleum and coal products manufacturing.....	324	1.675	114.2	130.1	5.3	-3.5	-2.7	3.5	13.9
Chemical manufacturing.....	325	12.168	149.8	150.3	0.3	-0.3	0.4	0.2	0.3
Plastics and rubber products manufacturing.....	326	2.339	127.3	128.9	0.2	-0.1	0.6	0.1	1.3
Nonmetallic mineral product manufacturing.....	327	0.901	140.3	142.8	0.1	0.4	0.6	-0.6	1.8
Manufacturing, part 3	33	63.462	118.4	119.1	4.6	0.6	0.9	1.1	0.6
Primary metal manufacturing.....	331	6.026	332.4	340.8	35.1	4.9	5.3	4.7	2.5
Fabricated metal product manufacturing...	332	2.951	140.6	142.3	-1.8	1.2	0.1	0.5	1.2
Machinery manufacturing.....	333	8.046	135.1	135.4	2.2	-0.2	0.5	0.1	0.2
Computer and electronic product manufacturing.....	334	17.945	73.5	74.0	3.4	0.0	0.4	1.9	0.7
Electrical equipment, appliance, and component manufacturing.....	335	6.378	127.0	126.9	2.8	0.2	0.3	0.1	-0.1
Transportation equipment manufacturing..	336	15.381	120.1	120.3	-0.6	0.0	0.5	0.1	0.2
Miscellaneous manufacturing.....	339	5.239	138.7	138.8	5.9	0.4	1.0	1.2	0.1

¹ Relative importance values are based on 2024 trade values.

NOTES: Data may be revised in each of the 3 months after original publication.

Dash = Not available

Table 4. U.S. export price indexes and percent changes for NAICS industries: March 2025 to March 2026
 [December 2005=100, unless otherwise noted]

Description	NAICS	Relative importance Feb. 2026 ¹	Index		Percent change				
			Feb. 2026	Mar. 2026	Annual	Monthly			
					Mar. 2025 to Mar. 2026	Nov. 2025 to Dec. 2025	Dec. 2025 to Jan. 2026	Jan. 2026 to Feb. 2026	Feb. 2026 to Mar. 2026
Nonmanufacturing		14.968	178.4	188.1	5.4	3.5	-1.0	7.5	5.4
Agriculture, forestry, fishing and hunting	11	4.223	185.1	186.9	3.3	-1.0	0.1	1.0	1.0
Crop production.....	111	3.984	196.7	198.7	3.4	-1.0	0.0	1.1	1.0
Animal production (Jan. 2025=100).....	112	0.107	101.5	104.7	6.1	1.1	5.8	-5.1	3.2
Forestry and logging (Jan. 2025=100)....	113	0.098	99.6	97.5	-1.8	-2.6	-2.3	0.3	-2.1
Fishing, hunting and trapping (Jan. 2025=100).....	114	0.034	98.7	97.9	-2.9	1.7	3.0	11.4	-0.8
Mining	21	10.745	114.6	122.9	6.7	5.3	-1.6	10.3	7.2
Oil and gas extraction (Dec. 2021=100)...	211	9.503	102.4	110.3	4.7	5.4	-1.9	10.7	7.7
Mining (except oil and gas).....	212	1.243	135.9	140.9	25.5	4.4	1.3	6.4	3.7
Manufacturing		83.132	142.8	144.2	4.9	0.1	0.6	0.8	1.0
Manufacturing, part 1	31	6.013	177.1	178.5	3.7	0.7	-0.1	0.7	0.8
Food manufacturing.....	311	4.417	210.7	212.3	3.4	0.7	-0.3	1.0	0.8
Beverage and tobacco product manufacturing.....	312	0.490	134.1	136.6	3.4	-0.1	2.0	-1.3	1.9
Manufacturing, part 2	32	24.604	134.8	139.7	3.3	-0.8	-0.4	1.4	3.6
Wood product manufacturing (Dec. 2017=100).....	321	0.418	134.7	134.9	6.6	-1.6	-0.4	-1.0	0.1
Paper manufacturing (Jan. 2025=100)....	322	1.246	98.6	98.4	-1.0	-0.3	-0.8	0.1	-0.2
Petroleum and coal products manufacturing.....	324	5.813	131.9	150.0	9.9	-2.4	-0.6	3.3	13.7
Chemical manufacturing.....	325	14.260	134.9	136.1	0.2	-0.7	-0.2	1.0	0.9
Plastics and rubber products manufacturing.....	326	2.064	139.9	139.0	3.9	0.2	0.0	-0.8	-0.6
Nonmetallic mineral product manufacturing.....	327	0.634	139.3	138.6	4.1	2.8	-1.3	1.5	-0.5
Manufacturing, part 3	33	52.515	143.3	142.8	5.6	0.4	1.1	0.5	-0.3
Primary metal manufacturing.....	331	6.139	358.9	352.7	39.1	2.0	7.4	4.1	-1.7
Machinery manufacturing.....	333	8.572	157.8	157.9	2.5	-0.7	0.3	0.2	0.1
Computer and electronic product manufacturing.....	334	12.986	83.9	83.6	0.2	0.0	0.2	-0.5	-0.4
Transportation equipment manufacturing..	336	13.318	156.4	156.7	2.6	0.1	0.8	-0.1	0.2
Furniture and related product manufacturing (Dec. 2023=100).....	337	0.301	112.3	112.0	7.2	0.8	0.9	0.3	-0.3
Miscellaneous manufacturing.....	339	4.432	148.4	147.2	3.7	1.9	0.0	0.7	-0.8

¹ Relative importance values are based on 2024 trade values.

NOTES: Data may be revised in each of the 3 months after original publication.

Dash = Not available

Table 5. U.S. import price indexes and percent changes for Harmonized categories of goods: March 2025 to March 2026

[2000=100, unless otherwise noted]

Description	Harmoni- zied system	Relative importance Feb. 2026 ¹	Index		Percent change				
			Feb. 2026	Mar. 2026	Annual	Monthly			
					Mar. 2025 to Mar. 2026	Nov. 2025 to Dec. 2025	Dec. 2025 to Jan. 2026	Jan. 2026 to Feb. 2026	Feb. 2026 to Mar. 2026
Live animals; animal products.....	I	1.546	262.3	262.9	1.3	0.6	1.6	-0.2	0.2
Meat and edible meat of fal.....	02	0.533	391.9	389.7	6.2	2.0	-0.6	-1.1	-0.6
Fish and crustaceans, molluscs and other aquatic invertebrates.....	03	0.678	162.1	164.6	-1.4	1.1	2.5	-0.4	1.5
Dairy products, eggs, and honey (Jan. 2025=100).....	04	0.145	101.4	100.8	-0.6	-2.8	1.2	-1.1	-0.6
Vegetable products.....	II	2.076	266.1	272.9	-3.3	0.1	0.3	0.2	2.6
Live trees & plants; bulbs, roots; cut flowers and ornamental foliage (Jan. 2025=100)...	06	0.146	86.5	80.2	-9.7	-0.9	-0.3	-0.8	-7.3
Edible vegetables, roots, and tubers.....	07	0.455	530.3	578.8	11.0	-2.3	0.5	3.8	9.1
Edible fruit and nuts; peel of citrus fruit or melons.....	08	0.699	117.4	121.8	-10.0	1.9	-0.1	0.6	3.7
Coffee, tea, mate and spices.....	09	0.467	413.9	405.3	-4.3	1.2	0.9	-3.3	-2.1
Cereals (Jan. 2025=100).....	10	0.088	92.2	94.7	-1.0	-3.6	0.7	0.4	2.7
Milling industry products; malt; starches; inulin; wheat gluten (Jan. 2025=100).....	11	0.083	92.5	93.1	-3.9	-0.5	0.8	0.0	0.6
Oilseeds & misc grains, seeds, plants, straw & fodder (Jan. 2025=100).....	12	0.085	97.1	100.5	-0.3	-1.8	3.9	-3.3	3.5
Animal or vegetable fats and oils (Dec. 2009=100).....	III	0.573	163.1	158.9	1.1	-0.1	-3.4	2.3	-2.6
Animal or vegetable fats and oils and their cleavage products; prepared (Dec. 2023=100).....	15	0.573	109.8	107.0	1.1	-0.2	-3.3	2.2	-2.6
Prepared foodstuffs, beverages, and tobacco.....	IV	3.221	201.6	201.1	-7.3	-0.4	-0.5	0.5	-0.2
Sugars and sugar confectionary (Dec. 2021=100).....	17	0.197	111.5	116.6	-1.8	-4.0	-2.7	-1.7	4.6
Cocoa and cocoa preparations (Dec. 2009=100).....	18	0.311	257.1	245.9	-24.3	3.0	-1.4	-1.0	-4.4
Preparations of cereals, flour, starch or milk; bakers' wares (Dec. 2023=100).....	19	0.498	99.1	99.3	1.3	-1.9	0.1	0.8	0.2
Preparations of vegetables, fruit, nuts, or other parts of plants (Jan. 2025=100).....	20	0.456	98.0	97.4	-2.1	-0.8	1.1	-0.1	-0.6
Miscellaneous edible preparations (Dec. 2022=100).....	21	0.404	96.9	97.7	2.2	1.0	-4.1	0.3	0.8
Beverages, spirits, and vinegar.....	22	0.865	134.3	132.9	-12.6	-1.1	0.5	2.4	-1.0
Residues and waste from the food industries; prepared animal feed (Jan. 2025=100).....	23	0.148	89.7	90.3	-8.6	1.4	-1.6	-0.9	0.7
Tobacco and manufactured tobacco substitutes (Jan. 2025=100).....	24	0.107	98.6	99.5	-2.9	0.6	2.9	0.6	0.9
Mineral products.....	V	7.011	253.2	260.6	-5.9	-0.9	-1.3	2.4	2.9
Salt; sulfur; earths and stone; plaster materials, lime & cement (Jan. 2025=100).....	25	0.166	106.7	109.6	12.5	5.2	-2.4	3.8	2.7
Ores, slag and ash (Jan. 2025=100).....	26	0.115	103.1	103.9	1.0	3.6	0.8	-3.8	0.8
Mineral fuels, oils and residuals, bituminous substances and mineral waxes.....	27	6.729	245.5	252.8	-6.3	-1.1	-1.3	2.5	3.0
Products of the chemical or allied industries.....	VI	11.660	171.0	171.6	0.6	-0.4	0.4	0.0	0.4
Inorganic chemicals (Dec. 2024=100).....	28	0.574	96.9	95.7	-0.7	-2.3	0.8	-0.9	-1.2
Organic chemicals.....	29	1.945	120.7	121.6	-9.5	-0.9	-6.3	0.7	0.7
Pharmaceutical products.....	30	6.886	160.1	161.1	5.3	0.1	1.6	-0.1	0.6
Fertilizers (Dec. 2022=100).....	31	0.312	68.3	68.2	9.6	-5.1	-0.1	-0.1	-0.1

See footnotes at end of table.

Table 5. U.S. import price indexes and percent changes for Harmonized categories of goods: March 2025 to March 2026 — Continued
 [2000=100, unless otherwise noted]

Description	Harmoni- zied system	Relative importance Feb. 2026 ¹	Index		Percent change				
			Feb. 2026	Mar. 2026	Annual	Monthly			
					Mar. 2025 to Mar. 2026	Nov. 2025 to Dec. 2025	Dec. 2025 to Jan. 2026	Jan. 2026 to Feb. 2026	Feb. 2026 to Mar. 2026
Soap, lubricants; waxes, candles, polishing products, and modeling paste (Dec. 2024=100).....	34	0.194	99.3	100.9	1.9	-0.3	0.7	0.2	1.6
Albuminoidal substances; modified starches; glues; enzymes (Jan. 2025=100).....	35	0.112	96.8	93.3	-2.2	-1.3	3.9	0.7	-3.6
Miscellaneous chemical products.....	38	0.727	110.1	111.0	2.5	-1.6	1.8	0.4	0.8
Plastics and articles thereof; rubber and articles thereof.....	VII	3.282	148.7	150.5	-1.2	-0.4	0.6	0.3	1.2
Plastics and articles thereof.....	39	2.233	145.0	147.7	-0.7	-0.4	0.6	0.6	1.9
Rubber and articles thereof.....	40	1.049	159.0	158.7	-2.1	-0.5	0.6	-0.1	-0.2
Raw hides, skins, leather, furskins, travel goods, etc (Dec. 2025=100).....	VIII	0.429	99.5	100.3	-	-	-0.6	0.1	0.8
Articles of leather; travel goods, bags, etc. of various materials (Dec. 2025=100).....	42	0.411	99.5	100.3	-	-	-0.6	0.1	0.8
Wood, wood charcoal, cork, straw, basketware and wickerwork (Jan. 2025=100).....	IX	0.736	91.7	92.8	-7.9	-1.8	0.9	1.7	1.2
Wood and articles of wood; wood charcoal (Jan. 2025=100).....	44	0.709	91.5	92.1	-8.6	-1.4	1.1	1.9	0.7
Woodpulp, recovered paper, and paper products (Jan. 2025=100).....	X	0.863	95.9	95.8	-2.6	-0.5	0.0	0.3	-0.1
Pulp wood, waste paper, and paperboard (Jan. 2025=100).....	47	0.120	89.4	87.7	-11.8	-2.5	-1.3	1.0	-1.9
Paper and paperboard; articles of paper pulp, paper or paperboard (Jan. 2025=100).....	48	0.576	96.3	96.4	-1.4	-0.3	0.2	0.4	0.1
Textile and textile articles.....	XI	3.414	115.4	115.8	-2.4	-1.4	-0.8	0.3	0.3
Manmade filaments, yarns and woven fabrics (Jan. 2025=100).....	54	0.055	94.3	95.2	-5.1	-1.0	2.6	0.9	1.0
Manmade staple fibers, yarns & woven fabrics (Jan. 2025=100).....	55	0.047	92.5	95.3	-4.1	-0.6	2.1	-3.2	3.0
Wadding, felt and nonwovens; special yarns; twine, cordage, and ropes (Jan. 2025=100).....	56	0.089	98.7	97.4	-3.4	1.2	-1.3	2.8	-1.3
Articles of apparel and clothing accessories, knitted or crocheted (Dec. 2023=100)....	61	1.370	95.0	94.7	-2.4	-1.4	-1.1	-0.3	-0.3
Articles of apparel and clothing accessories, not knitted or crocheted.....	62	1.065	122.9	122.2	-3.1	-1.2	-1.5	0.7	-0.6
Made-up or worn textile articles (Dec. 2023=100).....	63	0.497	92.0	95.0	-2.3	-2.6	1.8	1.2	3.3
Headgear, umbrellas, artificial flowers, etc.....	XII	1.054	126.5	127.1	1.2	0.2	-0.9	0.1	0.5
Footwear and parts of such articles.....	64	0.872	124.8	126.3	2.5	0.2	-0.1	-0.9	1.2
Stone, plaster, cement, asbestos, ceramics, glass etc.....	XIII	0.795	132.7	134.3	-0.7	-0.2	0.2	-0.5	1.2
Articles of stone, plaster, cement, asbestos, or mica (Dec. 2020=100).....	68	0.287	95.1	94.4	-2.4	-0.6	1.0	0.1	-0.7
Ceramic products (Dec. 2024=100).....	69	0.228	97.4	99.6	-0.1	1.2	0.0	-0.2	2.3
Glass and glassware (Dec. 2021=100).....	70	0.279	107.8	110.5	0.4	-0.9	-0.3	-1.5	2.5
Pearls, stones, precious metals, imitation jewelry, and coins.....	XIV	4.772	412.4	427.8	55.4	6.7	6.5	4.2	3.7
Pearls, precious stones, precious metals jewelry, coin (Dec. 2023=100).....	71	4.772	183.2	190.0	55.4	6.7	6.5	4.2	3.7
Base metals and articles of base metals. ...	XV	5.228	232.8	235.0	2.3	0.9	1.7	2.2	0.9

See footnotes at end of table.

Table 5. U.S. import price indexes and percent changes for Harmonized categories of goods: March 2025 to March 2026 — Continued
 [2000=100, unless otherwise noted]

Description	Harmoni- zied system	Relative importance Feb. 2026 ¹	Index		Percent change				
			Feb. 2026	Mar. 2026	Annual	Monthly			
					Mar. 2025 to Mar. 2026	Nov. 2025 to Dec. 2025	Dec. 2025 to Jan. 2026	Jan. 2026 to Feb. 2026	Feb. 2026 to Mar. 2026
Iron and steel (Jan. 2025=100).....	72	0.869	91.8	92.6	-5.7	0.6	0.7	0.2	0.9
Articles of iron or steel.....	73	1.458	176.8	177.7	-5.3	0.6	0.2	-0.4	0.5
Copper and articles thereof.....	74	0.692	533.4	528.5	20.3	1.2	5.9	7.6	-0.9
Nickel and articles thereof (Jan. 2025=100).....	75	0.107	101.2	103.0	2.3	-1.6	1.0	1.5	1.8
Aluminum and articles thereof.....	76	0.970	220.9	226.0	6.0	2.1	3.4	4.6	2.3
Lead and articles thereof (Jan. 2025=100)...	78	0.030	105.4	103.6	3.0	1.6	2.8	1.0	-1.7
Zinc and articles thereof (Jan. 2025=100)...	79	0.075	107.3	108.6	11.5	3.8	1.2	0.6	1.2
Tin and articles thereof (Jan. 2025=100).....	80	0.041	144.9	150.2	48.6	1.8	9.2	10.4	3.7
Base metals nesoi; cermets; articles thereof (Jan. 2025=100).....	81	0.133	117.7	118.6	20.3	0.5	0.1	6.8	0.8
Tools, implements, cutlery, spoons and forks, of base metal; parts thereof.....	82	0.355	134.0	135.3	2.8	0.9	3.3	1.0	1.0
Miscellaneous articles of base metal.....	83	0.498	146.2	149.0	5.0	-0.1	-1.6	1.2	1.9
Machinery, electrical equipment, TV image and sound recorders, parts, etc.....	XVI	32.183	83.9	84.3	3.1	0.1	0.5	1.1	0.5
Machinery and mechanical appliances; parts thereof.....	84	17.110	93.3	93.9	4.3	0.0	0.7	1.6	0.6
Electrical machinery and equip, sound and TV recorders & reproducers, parts.....	85	15.073	75.2	75.4	1.6	0.1	0.5	0.3	0.3
Vehicles, aircraft, vessels and associated transport equipment.....	XVII	13.121	124.0	124.3	-0.6	0.1	0.4	0.2	0.2
Motor vehicles and their parts.....	87	12.100	122.7	122.8	-0.8	0.0	0.5	0.2	0.1
Optical, photo, measuring, medical & musical instruments; & timepieces.....	XVIII	4.227	113.7	114.0	2.9	-0.2	0.5	0.3	0.3
Optical, photographic, measuring and medical instruments.....	90	3.912	108.6	108.7	2.3	-0.1	0.5	0.3	0.1
Miscellaneous manufactured articles.....	XX	3.731	121.7	121.8	0.6	0.0	0.0	0.3	0.1
Toys, games and sports equipment; parts and accessories thereof.....	95	1.300	107.0	106.8	-0.3	0.0	0.5	0.0	-0.2
Miscellaneous manufactured articles.....	96	0.268	148.9	150.8	-3.3	-1.1	0.3	1.4	1.3

¹ Relative importance values are based on 2024 trade values.

NOTES: Data may be revised in each of the 3 months after original publication.

Dash = Not available

Table 6. U.S. export price indexes and percent changes for Harmonized categories of goods: March 2025 to March 2026

[2000=100, unless otherwise noted]

Description	Harmoni- zied system	Relative importance Feb. 2026 ¹	Index		Percent change				
			Feb. 2026	Mar. 2026	Annual	Monthly			
					Mar. 2025 to Mar. 2026	Nov. 2025 to Dec. 2025	Dec. 2025 to Jan. 2026	Jan. 2026 to Feb. 2026	Feb. 2026 to Mar. 2026
Live animals; animal products.....	I	1.867	289.0	291.6	3.1	0.2	-0.5	1.8	0.9
Meat & edible meat offal (Dec. 2006=100)...	02	1.170	253.5	255.0	3.5	0.3	-1.4	2.3	0.6
Fish and crustaceans, mollusks and aquatic invertebrates (Jan. 2025=100).....	03	0.259	106.8	106.7	6.1	1.2	1.2	3.3	-0.1
Dairy products, eggs and honey (Jan. 2025=100).....	04	0.317	93.5	95.3	-4.1	-0.3	-1.5	1.2	1.9
Products of animal origin, nesoi (Jan. 2025=100).....	05	0.053	106.7	109.5	9.1	-4.6	3.9	-3.2	2.6
Vegetable products.....	II	4.102	247.1	249.8	4.0	-0.9	0.2	0.8	1.1
Edible Vegetables (Jan. 2025=100).....	07	0.340	105.8	105.9	9.3	-2.5	-0.4	5.6	0.1
Edible fruit and nuts; citrus or melon peels...	08	0.987	193.2	194.4	7.9	-1.5	-0.8	0.6	0.6
Cereals.....	10	1.161	224.2	224.5	-5.6	-1.1	1.2	-0.9	0.1
Milling industry products; malt; starches; inulin; wheat gluten (Jan. 2025=100).....	11	0.061	98.9	98.5	-0.6	0.6	2.4	-1.7	-0.4
Oilseeds and misc. grains, seeds, fruits, plants, straw and fodder.....	12	1.425	226.0	231.6	6.0	0.1	0.0	1.7	2.5
Animal or vegetable fats and oils (Jan. 2025=100).....	III	0.121	103.4	104.9	6.0	-1.1	-2.0	1.1	1.5
Animal or vegetable fats & oils (Jan. 2025=100).....	15	0.121	103.4	104.9	6.0	-1.1	-2.0	1.1	1.5
Prepared foodstuffs, beverages, and tobacco.....	IV	2.881	185.2	187.7	3.1	0.7	0.1	-0.1	1.3
Edible preps of meat, of fish, or of aquatic invertebrates (Jan. 2025=100).....	16	0.137	104.0	104.6	1.1	0.6	-0.7	0.9	0.6
Sugars and sugar confectionary (Jan. 2025=100).....	17	0.152	103.2	105.3	6.1	-0.2	-1.9	0.6	2.0
Cocoa and cocoa preparations (Jan. 2025=100).....	18	0.205	115.5	119.5	15.3	1.4	-3.1	2.7	3.5
Preparations of cereals, flour, starch or milk; bakers' wares (Dec. 2023=100).....	19	0.275	107.8	107.6	5.3	2.5	-0.1	2.5	-0.2
Preparations of vegetables, fruit, nuts or other parts of plants (Jan. 2025=100).....	20	0.297	101.9	103.5	3.2	0.7	-0.4	-0.3	1.6
Miscellaneous edible preparations (Dec. 2017=100).....	21	0.565	122.6	121.6	2.0	1.6	1.2	-0.7	-0.8
Beverages, spirits, and vinegar (Dec. 2024=100).....	22	0.508	97.6	102.0	2.2	-2.4	1.1	-4.0	4.5
Residues and waste from the food industries; prepared animal feed.....	23	0.658	241.8	244.2	1.1	1.5	0.3	1.6	1.0
Mineral products.....	V	16.512	285.3	312.7	7.8	2.6	-1.2	7.7	9.6
Ores, slag and ash (Dec. 2012=100).....	26	0.590	187.0	201.0	50.4	4.4	-1.0	9.2	7.5
Mineral fuels, oils and residuals, bituminous substances and mineral waxes.....	27	15.751	269.7	296.1	6.7	2.4	-1.2	7.8	9.8
Products of the chemical or allied industries.....	VI	12.417	167.3	167.9	0.7	-0.4	-1.1	1.3	0.4
Inorganic chemicals (Jan. 2025=100).....	28	0.988	111.0	110.8	10.1	-1.5	3.6	2.3	-0.2
Organic chemicals (Jan. 2025=100).....	29	2.369	88.3	89.9	-13.1	-1.1	-10.4	2.7	1.8
Pharmaceutical products.....	30	4.840	110.2	110.5	3.6	0.0	2.3	0.3	0.3
Fertilizers (Jan. 2025=100).....	31	0.308	109.3	105.1	2.6	-2.8	-2.6	1.0	-3.8
Tanning or dyeing extracts, dyes, paints varnish, putty, & inks (Dec. 2024=100)....	32	0.441	110.3	110.6	9.1	0.1	-1.5	-0.2	0.3
Miscellaneous chemical products.....	38	1.855	200.6	199.8	3.3	0.1	0.3	2.6	-0.4
Rubber and articles thereof.....	40	0.731	197.8	200.7	2.0	-1.9	-2.6	2.0	1.5

See footnotes at end of table.

Table 6. U.S. export price indexes and percent changes for Harmonized categories of goods: March 2025 to March 2026 — Continued
 [2000=100, unless otherwise noted]

Description	Harmoni- zied system	Relative importance Feb. 2026 ¹	Index		Percent change				
			Feb. 2026	Mar. 2026	Annual	Monthly			
					Mar. 2025 to Mar. 2026	Nov. 2025 to Dec. 2025	Dec. 2025 to Jan. 2026	Jan. 2026 to Feb. 2026	Feb. 2026 to Mar. 2026
Raw hides and skins other than furskins and leather (Jan. 2025=100).....	41	0.062	91.5	87.8	-7.8	-4.2	-2.1	-7.1	-4.0
Wood, wood charcoal, cork, straw, baskets and wickerwork (Dec. 2014=100).....	IX	0.486	119.9	120.4	4.7	-0.1	-1.1	-0.8	0.4
Wood and articles of wood; wood charcoal (Dec. 2023=100).....	44	0.485	111.6	112.1	4.4	-0.1	-1.2	-0.8	0.4
Woodpulp, recovered paper, and paper products (Jan. 2025=100).....	X	1.362	98.4	99.0	-0.7	0.0	-0.7	0.6	0.6
Woodpulp and recovered paper (Dec. 2019=100).....	47	0.381	156.5	158.0	-8.9	-2.0	-1.1	-0.3	1.0
Paper and paperboard; articles of paper pulp, paper or paperboard (Jan. 2025=100).....	48	0.785	100.1	100.3	2.0	1.1	-0.3	0.5	0.2
Textile and textile articles (Jan. 2025=100)..	XI	1.181	101.6	101.7	2.4	0.9	-0.3	0.9	0.1
Cotton, yarns and woven fabrics thereof....	52	0.254	130.1	129.1	-5.4	-0.5	0.3	-1.8	-0.8
Manmade filaments, yarns and woven fabrics (Jan. 2025=100).....	54	0.072	102.7	98.9	0.0	3.6	-2.6	2.3	-3.7
Manmade staple fibers, yarns and woven fabrics (Jan. 2025=100).....	55	0.103	96.5	95.6	-3.1	0.6	-4.5	1.4	-0.9
Stone, plaster, cement, asbestos, ceramics, glass etc.....	XIII	0.680	166.7	166.2	5.1	1.1	-0.4	1.2	-0.3
Glass and glassware (Dec. 2019=100).....	70	0.321	121.0	119.0	3.4	2.8	-1.6	1.7	-1.7
Pearls, stones, precious metals, imitation jewelry, and coins.....	XIV	6.124	582.8	571.1	47.7	4.1	7.1	6.4	-2.0
Pearls, precious stones, precious metals; jewelry, coin (Dec. 2023=100).....	71	6.124	186.7	182.9	47.6	4.1	7.1	6.4	-2.0
Base metals and articles of base metals. ...	XV	4.913	239.5	240.8	11.5	0.5	0.9	2.3	0.5
Iron and steel (Jan. 2025=100).....	72	0.986	106.6	108.0	6.6	1.2	-0.3	1.5	1.3
Copper and articles thereof.....	74	0.760	364.9	368.8	24.1	1.6	4.2	5.6	1.1
Aluminum and articles thereof.....	76	0.853	186.7	189.7	18.3	1.6	0.2	3.9	1.6
Machinery, electrical equipment, TV image and sound recorders, parts, etc.....	XVI	26.532	112.3	112.1	2.2	0.1	0.7	-0.1	-0.2
Machinery and mechanical appliances; parts thereof.....	84	15.762	139.5	139.6	2.9	-0.1	1.2	0.1	0.1
Electrical machinery and equipment and parts and accessories thereof.....	85	10.770	84.2	83.7	1.1	0.4	0.0	-0.4	-0.6
Vehicles, aircraft, vessels and associated transport equipment.....	XVII	9.557	162.3	162.4	2.3	0.1	0.2	0.1	0.1
Motor vehicles and their parts.....	87	6.930	134.9	135.0	2.2	0.1	0.0	0.1	0.1
Aircraft, spacecraft, and parts thereof (excluding military) (Dec. 2025=100).....	88	2.627	101.2	101.2	-	-	0.7	0.5	0.0
Miscellaneous manufactured articles.....	XX	1.065	149.7	150.7	9.4	2.8	0.1	0.5	0.7
Furniture; stuffed furnishings; lamps and lighting fittings nesoi.....	94	0.538	161.9	163.5	6.7	1.5	1.1	0.2	1.0
Toys, games and sports equipment; parts and accessories thereof.....	95	0.391	133.9	134.6	14.1	0.7	0.8	0.8	0.5

¹ Relative importance values are based on 2024 trade values.

NOTES: Data may be revised in each of the 3 months after original publication.

Dash = Not available

Table 7. U.S. import price indexes and percent changes by locality of origin: March 2025 to March 2026
 [2000=100, unless otherwise noted]

Description	Relative importance Feb. 2026 ¹	Index		Percent change				
		Feb. 2026	Mar. 2026	Annual Mar. 2025 to Mar. 2026	Monthly			
					Nov. 2025 to Dec. 2025	Dec. 2025 to Jan. 2026	Jan. 2026 to Feb. 2026	Feb. 2026 to Mar. 2026
Industrialized Countries²	100.000	152.3	150.8	2.3	0.5	1.0	1.0	-1.0
Nonmanufacturing.....	9.777	236.3	226.0	-10.5	1.7	-0.6	1.3	-4.4
Manufacturing.....	89.745	145.1	144.0	3.6	0.4	1.1	1.0	-0.8
Canada	100.000	173.4	173.3	1.0	0.7	0.7	1.1	-0.1
Nonmanufacturing.....	29.006	230.0	219.0	-10.8	1.9	-0.7	1.5	-4.8
Manufacturing.....	70.033	161.9	164.8	6.0	0.3	1.2	0.9	1.8
European Union	100.000	160.3	160.8	2.4	0.3	0.3	0.6	0.3
Manufacturing.....	99.374	155.8	156.3	2.3	0.3	0.2	0.7	0.3
France (Dec. 2003=100)	100.000	156.4	158.5	-1.5	0.3	-1.1	0.6	1.3
Germany (Dec. 2003=100)	100.000	130.7	132.2	4.7	0.6	1.8	-0.4	1.1
United Kingdom (Dec. 2003=100)	100.000	138.7	139.0	-0.8	-0.7	0.3	0.4	0.2
Latin America³	100.000	178.3	180.7	2.3	0.2	0.5	0.6	1.3
Nonmanufacturing.....	12.480	325.5	348.9	0.3	-0.5	0.5	2.7	7.2
Manufacturing.....	87.061	145.2	145.8	2.5	0.3	0.4	0.3	0.4
Mexico (Dec. 2003=100)	100.000	150.9	152.1	1.3	0.3	0.3	0.1	0.8
Nonmanufacturing (Dec. 2008=100).....	5.927	163.6	179.3	0.0	0.3	-0.1	4.6	9.6
Manufacturing (Dec. 2008=100).....	93.645	104.0	104.2	1.7	0.3	0.3	-0.2	0.2
Pacific Rim (Dec. 2003=100)⁴	100.000	102.9	103.5	1.0	-0.1	0.2	1.2	0.6
China (Dec. 2003=100)	100.000	97.5	98.2	-1.1	0.1	0.1	0.2	0.7
Japan	100.000	102.8	102.6	0.4	-0.5	0.0	0.2	-0.2
Taiwan (Dec. 2018=100)	100.000	113.2	114.1	2.7	0.0	0.4	0.9	0.8
Asian NICs⁵	100.000	95.3	96.6	0.7	-1.3	-0.3	1.6	1.4
ASEAN (Dec. 2003=100)⁶	100.000	102.2	102.6	1.7	-0.1	-1.0	0.4	0.4
Asia Near East (Dec. 2003=100)⁷	100.000	202.5	210.3	1.1	-0.6	0.4	3.6	3.9

¹ Relative importance values are based on 2024 trade values.

² Western Europe, Canada, Japan, Australia, New Zealand, and South Africa.

³ Mexico, Central America, South America, and the Caribbean.

⁴ China, Japan, Australia, Brunei, Indonesia, Macao, Malaysia, New Zealand, Papua New Guinea, Philippines, and the Asian Newly Industrialized Countries.

⁵ Asian Newly Industrialized Countries - Hong Kong, Singapore, South Korea, and Taiwan.

⁶ Association of Southeast Asian Nations - Brunei, Cambodia, Indonesia, Laos, Malaysia, Myanmar, Philippines, Singapore, Thailand, and Vietnam.

⁷ Bahrain, Iran, Iraq, Israel, Jordan, Kuwait, Lebanon, Oman, Qatar, Saudi Arabia, Syria, United Arab Emirates, and Yemen.

NOTES: Data may be revised in each of the 3 months after original publication.

Regions are not mutually exclusive.

Dash = Not available

Table 8. U.S. export price indexes and percent changes by locality of destination: March 2025 to March 2026
 [December 2017=100, unless otherwise noted]

Description	Relative importance Feb. 2026 ¹	Index		Percent change				
		Feb. 2026	Mar. 2026	Annual Mar. 2025 to Mar. 2026	Monthly			
					Nov. 2025 to Dec. 2025	Dec. 2025 to Jan. 2026	Jan. 2026 to Feb. 2026	Feb. 2026 to Mar. 2026
Industrialized Countries²	100.000	135.2	136.6	8.1	1.4	0.8	2.5	1.0
Nonmanufacturing.....	14.228	147.2	157.5	8.2	3.6	-0.7	9.0	7.0
Manufacturing.....	83.755	132.9	132.9	7.1	0.9	0.8	1.4	0.0
Canada	100.000	140.4	141.5	7.5	1.7	0.5	2.3	0.8
Nonmanufacturing (Dec. 2020=100).....	9.296	160.3	162.6	10.6	1.7	1.8	10.0	1.4
Manufacturing (Dec. 2020=100).....	87.275	127.9	129.2	5.8	1.5	0.0	1.0	1.0
European Union	100.000	124.7	128.0	5.8	1.3	-0.2	3.1	2.6
Nonmanufacturing.....	20.605	135.4	147.1	8.3	4.3	-1.2	9.6	8.6
Manufacturing.....	78.315	122.6	123.4	4.1	0.2	0.2	1.2	0.7
Germany	100.000	138.0	140.6	10.6	-0.8	1.7	3.1	1.9
Latin America³	100.000	125.9	130.3	4.5	0.2	-0.6	1.2	3.5
Nonmanufacturing.....	9.265	160.6	171.4	6.2	7.6	-1.8	3.8	6.7
Manufacturing.....	90.259	123.5	127.3	4.3	-0.5	-0.5	1.0	3.1
Mexico	100.000	129.4	133.5	5.7	-0.2	-0.3	1.3	3.2
Nonmanufacturing.....	8.356	146.7	163.6	9.0	9.1	-4.0	2.4	11.5
Manufacturing.....	91.033	129.1	132.2	5.4	-1.0	0.1	1.1	2.4
Pacific Rim⁴	100.000	118.5	119.2	3.9	0.4	0.9	1.4	0.6
Nonmanufacturing.....	19.567	111.2	117.1	2.6	1.3	0.7	4.9	5.3
Manufacturing.....	78.426	121.8	121.1	3.9	-0.2	1.3	0.3	-0.6
China	100.000	110.5	113.0	3.6	-0.7	1.0	-0.4	2.3
Nonmanufacturing.....	22.529	93.7	93.5	-5.4	-0.8	-0.6	-1.6	-0.2
Manufacturing.....	74.917	118.3	121.7	5.8	-0.8	1.3	-0.1	2.9
Japan	100.000	122.2	121.6	5.6	0.6	1.4	2.4	-0.5
Nonmanufacturing.....	21.807	125.0	115.1	-6.5	6.1	1.0	8.2	-7.9
Manufacturing.....	76.961	120.8	122.7	8.5	-1.5	1.9	0.8	1.6

¹ Relative importance values are based on 2024 trade values.

² Western Europe, Canada, Japan, Australia, New Zealand, and South Africa.

³ Mexico, Central America, South America, and the Caribbean.

⁴ China, Japan, Australia, Brunei, Indonesia, Macao, Malaysia, New Zealand, Papua New Guinea, Philippines, and the Asian Newly Industrialized Countries.

NOTES: Data may be revised in each of the 3 months after original publication.

Regions are not mutually exclusive.

Dash = Not available

Table 9. U.S. terms of trade indexes and percent changes by locality: March 2025 to March 2026¹
 [December 2017=100, unless otherwise noted]

Description	Index		Percent change				
	Feb. 2026	Mar. 2026	Annual	Monthly			
			Mar. 2025 to Mar. 2026	Nov. 2025 to Dec. 2025	Dec. 2025 to Jan. 2026	Jan. 2026 to Feb. 2026	Feb. 2026 to Mar. 2026
Industrialized Countries²	108.7	110.9	5.6	0.8	-0.2	1.5	2.0
Canada	106.4	107.3	6.4	1.0	-0.2	1.1	0.8
European Union	104.7	107.1	3.3	1.0	-0.6	2.4	2.3
Germany	121.5	122.4	5.7	-1.3	-0.1	3.4	0.7
Latin America³	105.1	107.4	2.2	0.0	-0.9	0.6	2.2
Mexico	110.6	113.2	4.3	-0.5	-0.6	1.1	2.4
Pacific Rim⁴	113.3	113.3	2.9	0.5	0.6	0.2	0.0
China	113.4	115.2	4.7	-0.8	0.9	-0.6	1.6
Japan	113.5	113.2	5.2	1.1	1.3	2.3	-0.3

¹ Terms of trade indexes are derived by dividing the export price index by the corresponding import price index and multiplying by 100.

² Western Europe, Canada, Japan, Australia, New Zealand, and South Africa.

³ Mexico, Central America, South America, and the Caribbean.

⁴ China, Japan, Australia, Brunei, Indonesia, Macao, Malaysia, New Zealand, Papua New Guinea, Philippines, and the Asian Newly Industrialized Countries.

NOTES: Data may be revised in each of the 3 months after original publication.

Regions are not mutually exclusive.

Dash = Not available

Table 10. U.S. international price indexes and percent changes for selected transportation services: March 2025 to March 2026

[2000=100, unless otherwise noted]

Description	Relative importance Feb. 2026 ¹	Index		Percent change				
		Feb. 2026	Mar. 2026	Annual Mar. 2025 to Mar. 2026	Monthly			
					Nov. 2025 to Dec. 2025	Dec. 2025 to Jan. 2026	Jan. 2026 to Feb. 2026	Feb. 2026 to Mar. 2026
Air Freight								
Import Air Freight	100.000	255.0	249.9	8.3	3.7	-3.2	-2.9	-2.0
Europe (Dec. 2003=100).....	35.595	201.6	212.7	35.3	4.5	5.8	-5.4	5.5
Asia.....	62.012	259.6	239.8	0.9	4.1	-9.3	-1.4	-7.6
Export Air Freight	100.000	172.4	172.4	-2.5	0.7	3.4	1.6	0.0
Europe (Dec. 2006=100).....	35.187	132.8	126.3	-4.0	-0.1	5.0	1.0	-4.9
Asia (Dec. 2011=100).....	38.006	128.9	131.0	-6.2	3.0	-2.3	2.4	1.6
Inbound Air Freight	100.000	181.1	182.4	2.6	3.3	-2.8	-2.5	0.7
Europe (Dec. 2003=100).....	32.348	167.8	179.9	33.1	4.3	5.4	-5.0	7.2
Asia.....	55.604	170.9	160.8	-7.1	4.1	-8.7	-1.5	-5.9
Outbound Air Freight	100.000	159.8	158.2	-6.1	0.5	2.2	0.5	-1.0
Europe (Dec. 2003=100).....	36.818	164.8	157.8	-6.5	0.7	5.4	-1.3	-4.2
Asia.....	36.220	159.4	160.8	-9.6	0.3	0.1	2.4	0.9
Air Passenger Fares								
Import Air Passenger Fares	100.000	172.3	175.8	1.3	6.4	-10.1	-0.4	2.0
Europe.....	46.499	201.4	207.0	6.1	-0.7	0.9	0.6	2.8
Asia.....	16.556	129.6	156.2	-0.3	12.9	-18.4	-10.2	20.5
Latin America/Caribbean.....	9.621	154.5	158.0	2.6	16.3	-19.3	10.3	2.3
Export Air Passenger Fares	100.000	171.8	181.5	1.3	-2.3	13.2	-11.9	5.6
Europe.....	32.671	206.3	218.0	2.4	-3.2	7.8	-7.8	5.7
Asia.....	16.703	149.1	160.6	-4.8	-6.9	19.3	-20.5	7.7
Latin America/Caribbean.....	30.291	180.2	187.4	2.2	1.8	26.4	-16.0	4.0

¹ Relative importance values are based on 2024 trade values.

NOTES: Data may be revised in each of the 3 months after original publication.

Dash = Not available

TECHNICAL NOTE

Import and Export Goods and Services Price Indexes - All indexes use a modified Laspeyres formula and are not seasonally adjusted. Price indexes are reweighted annually, with a 2-year lag in the weights. Published series use a base year of 2000=100 where possible. More detailed index series and additional information may be obtained at www.bls.gov/mxp or by calling (202) 691-7101.

Merchandise Goods Classification Systems - The merchandise price indexes are published using three classification systems. Items are classified by end use according to the Bureau of Economic Analysis Classification System, by industry according to the North American Industry Classification System (NAICS), and by product category according to the Harmonized System (HS). While classification by end use and product category are self-explanatory, some notes are in order for classifying items by industry. In the NAICS imports and exports tables, items are classified by output industry, not input industry. As an example, NAICS import index 326 (plastics and rubber products manufacturing) includes outputs such as manufactured plastic rather than inputs such as petroleum. The NAICS classification structure also matches the classification system used by the Producer Price Index (PPI) to produce the NAICS primary products indexes.

Import Price Goods Indexes - Items are classified by the Harmonized Tariff Schedule of the United States Annotated (TSUSA). Import prices are based on U.S. dollar prices paid by the U.S. importer. The prices are generally either "free on board" (f.o.b.) foreign port or "cost, insurance, and freight" (c.i.f.) U.S. port transaction prices, depending on the practices of the individual industry.

Export Price Goods Indexes - Items are classified by the Harmonized Schedule B classification system of the U.S. Bureau of the Census. The prices used are generally either "free alongside ship" (f.a.s.) factory or "free on board" (f.o.b.) transaction prices, depending on the practices of the individual industry.

Services Price Indexes - Indexes for import and export air passenger fares calculate changes in the average revenue received per passenger by foreign carriers from U.S. residents and by U.S. carriers from foreign residents, respectively. The air freight indexes are calculated from data collected directly from airlines. These data exclude mail and passenger baggage. The scope of the service being priced is the movement of freight from airport to airport only and does not include any ground transportation or port service. The air freight indexes are presented using two definitions: balance of payments (which represents transactions between U.S. and foreign residents) and international (which represents transactions inbound to and outbound from the United States.)

Import Price Indexes by Locality of Origin - Prices used in these indexes are a subset of the data collected for the import price indexes. The indexes are specific to a country, region, or grouping and, beginning with January 2002, are based on the North American Industry Classification System (NAICS) covering goods-producing industries. Nonmanufactured goods are defined as NAICS 11 and 21, and manufactured goods are defined as NAICS 31-33.

Export Price Indexes by Locality of Destination - Prices used in these indexes are a subset of the data collected for the export price indexes. The indexes are specific to a country, region, or grouping and are based on the North American Industry Classification System (NAICS) covering goods-producing industries. Nonmanufactured goods are defined as NAICS 11 and 21, and manufactured goods are defined as NAICS 31-33.

Terms of Trade Indexes - Terms of trade indexes measure the relative price of exports in terms of import prices for a specific country, region, or grouping. The indexes are calculated as one country, region, or grouping's all-export goods price index divided by the corresponding all-import goods price index on a scale of 100.

Relative Importance - A relative importance is a specific index's price-updated value share (expressed as a percentage) of overall imports or exports at a specific point in time. Relative importance values are affected by the trade weights at the point indexes are reweighted and index changes relative to other indexes since the reweight point. If an index is rising in value relative to other indexes over time, the relative importance will increase as well.

Revision Policy - To reflect the availability of late reports and corrections by respondents, monthly data may be revised in each of the 3 months after original publication. After 3 months, no further data revisions take place. For example, data first published in the January release will be subject to revision in the releases for February, March, and April.

Rounding Policy - Index values are rounded to the tenth decimal place after being calculated. All percent changes are then derived from the rounded index values and subsequently rounded to the tenth decimal place.

Uses of the Data - The primary use of the indexes is to deflate trade statistics, notably the foreign trade sector of the National Income and Product Accounts (NIPA) constructed by the Department of Commerce. Other published indexes are useful for general market analysis. For trade in international services, balance of payments indexes are used for deflating NIPA, while international indexes are more appropriate for market analysis.

Additional Information - More detailed data are available on the Import/Export Price Indexes home page at www.bls.gov/mxp. For import and export price indexes data requests, send an email to mxpinfo@bls.gov.

If you are deaf, hard of hearing, or have a speech disability, please dial 7-1-1 to access telecommunications relay services.