



**Transmission of material in this release is embargoed until
 8:30 a.m. (EDT) Wednesday, May 10, 2017**

USDL-17-0591

Technical information: (202) 691-7101 • MXPinfo@bls.gov • www.bls.gov/mxp
 Media contact: (202) 691-5902 • PressOffice@bls.gov

U.S. IMPORT AND EXPORT PRICE INDEXES – APRIL 2017

The price index for U.S. imports advanced 0.5 percent in April, the U.S. Bureau of Labor Statistics reported today, after ticking up 0.1 percent the previous month. Higher fuel prices and nonfuel prices each contributed to the increase in April. U.S. export prices rose 0.2 percent in April following a 0.1-percent advance in March. Prices for U.S. exports have not recorded a monthly decline since the index fell 0.8 percent in August 2016.

Chart 1. One-month percent change in the Import Price Index: April 2016 – April 2017

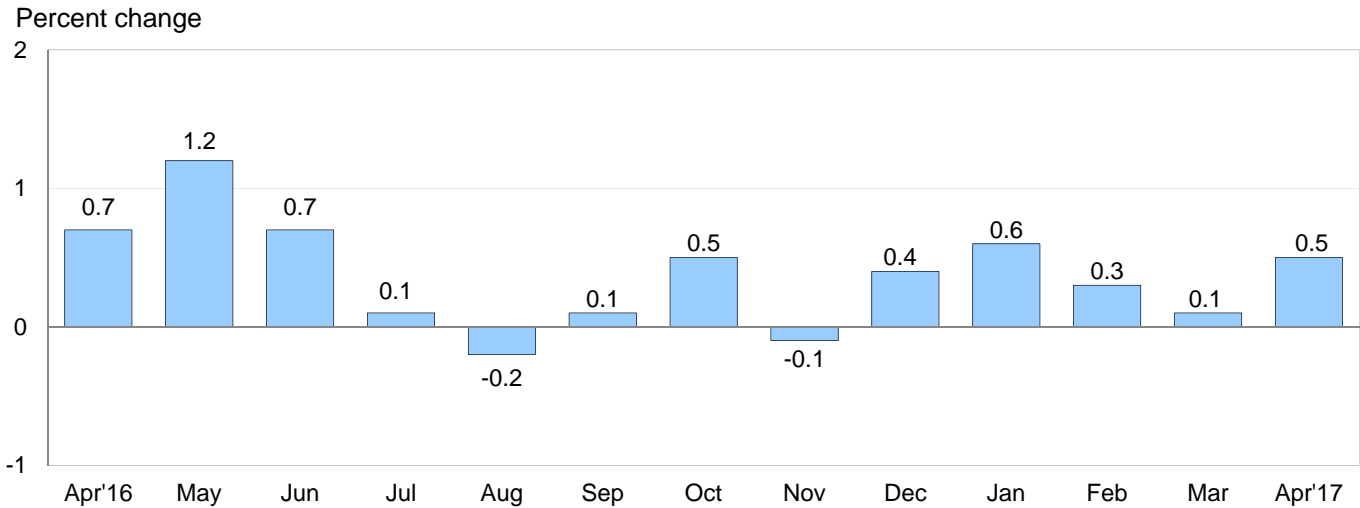
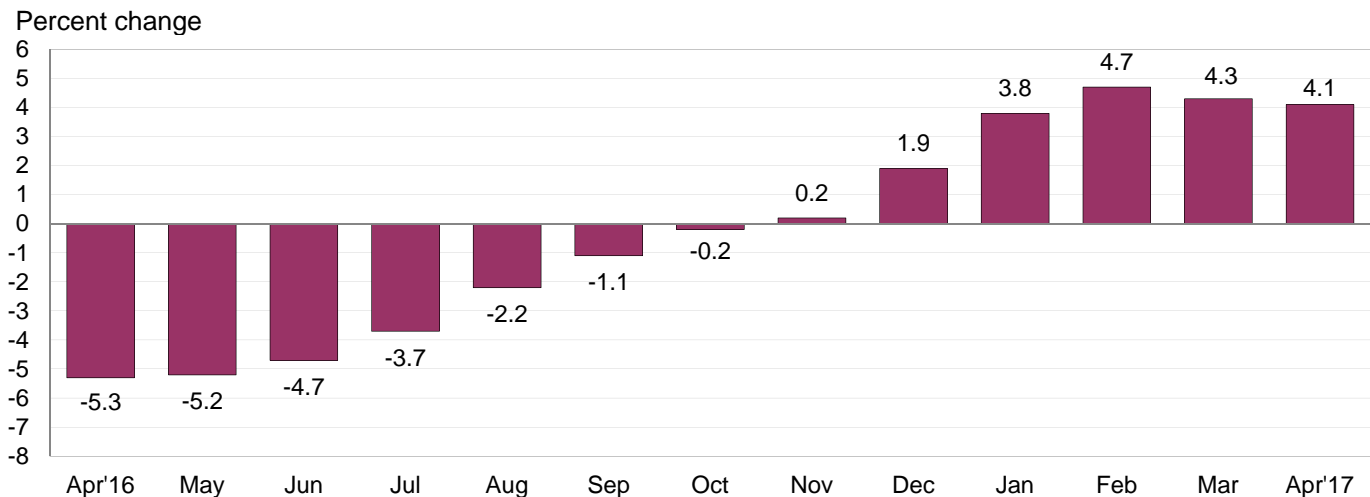


Chart 2. 12-month percent change in the Import Price Index: April 2016 – April 2017



All Imports: Import prices rose 0.5 percent in April and have not recorded a monthly decline since the index edged down 0.1 percent in November. Prices for U.S. imports rose 4.1 percent for the year ended in April, continuing the recent trend of 12-month increases over 4.0 percent, which are the largest over-the-year advances for the index since a 5.1-percent increase in February 2012. Import prices have risen on a 12-month basis since November.

Fuel Imports: Fuel prices rose 1.6 percent in April following a 0.9-percent decline the previous month. A 1.6-percent advance in petroleum prices and a 4.0-percent rise in natural gas prices each contributed to the April increase in overall fuel prices. The price index for import fuel advanced 42.7 percent over the past year in contrast to a 31.7-percent decline for the previous 12-month period ended April 2016. Petroleum prices rose 43.8 percent between April 2016 and April 2017 and natural gas prices increased 48.9 percent over the same period.

All Imports Excluding Fuel: The price index for nonfuel prices advanced 0.3 percent in April, after increasing 0.2 percent in March and 0.4 percent in February. In April, higher prices for nonfuel industrial supplies and materials; foods, feeds, and beverages; and each of the major finished goods categories all contributed to the overall rise in nonfuel prices. Prices for nonfuel imports advanced 1.1 percent for the year ended in April. Rising prices for nonfuel industrial supplies and materials; automotive vehicles; foods, feeds, and beverages; and consumer goods more than offset lower capital goods prices for the year.

Table A. Percent change in Import and Export Price Indexes, selected categories

Month	IMPORTS			EXPORTS		
	All imports	Fuel imports	Nonfuel imports	All exports	Agricultural exports	Non-agricultural exports
2016						
April.....	0.7	9.8	0.1	0.5	0.8	0.4
May.....	1.2	12.7	0.3	1.1	3.0	1.0
June.....	0.7	10.5	-0.2	0.8	2.5	0.5
July.....	0.1	-2.1	0.3	0.2	-0.3	0.3
August.....	-0.2	-3.4	0.0	-0.8	-3.4	-0.6
September.....	0.1	1.3	0.0	0.3	-1.0	0.5
October.....	0.5	6.6	0.0	0.2	0.5	0.2
November.....	-0.1	-1.1	-0.1	0.1	0.7	0.0
December.....	0.4	5.8	0.0	0.4	-0.2	0.4
2017						
January.....	0.6	6.1	-0.1	0.2	0.4 ^r	0.2
February.....	0.3 ^r	0.4 ^r	0.4	0.3	1.4 ^r	0.3
March.....	0.1 ^r	-0.9 ^r	0.2	0.1 ^r	0.8 ^r	0.1 ^r
April.....	0.5	1.6	0.3	0.2	0.3	0.1
Apr. 2015 to 2016.....	-5.3	-31.7	-2.0	-5.1	-9.1	-4.7
Apr. 2016 to 2017.....	4.1	42.7	1.1	3.0	4.6	2.9

r Revised

Chart 3. One-month percent change in the Export Price Index: April 2016 – April 2017

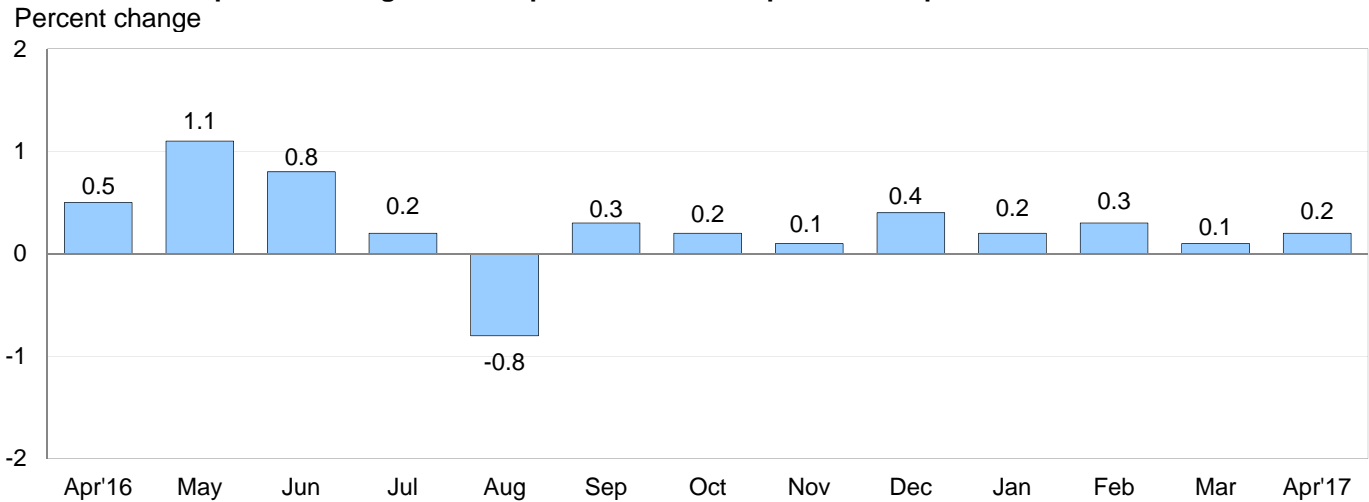
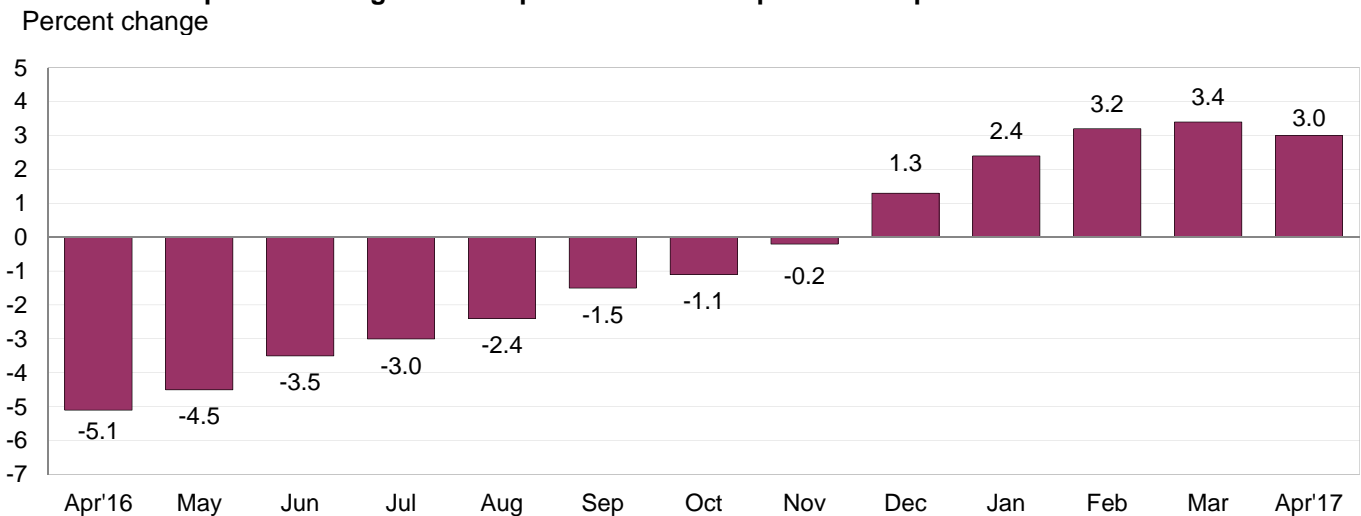


Chart 4. 12-month percent change in the Export Price Index: April 2016 – April 2017



All Exports: U.S. export prices continued to rise in April, increasing 0.2 percent. Higher prices for both agricultural and nonagricultural exports contributed to the overall advance in export prices. Prices for U.S. exports rose 3.0 percent over the past 12 months following a 5.1-percent drop for the year ended April 2016.

Agricultural Exports: Agricultural export prices advanced 0.3 percent in April, after a 0.8-percent increase the previous month. In April, a 37.9-percent jump in vegetable prices more than offset falling prices for soybeans, corn, and wheat. The increase in vegetable prices was the largest monthly advance since the index was first published monthly in December 1996. The price index for agricultural exports rose 4.6 percent over the past year.

All Exports Excluding Agriculture: Prices for nonagricultural exports ticked up 0.1 percent for the second consecutive month in April. Higher prices for capital goods and automotive vehicles more than offset a drop in prices for industrial supplies and materials. The price index for nonagricultural exports increased 2.9 percent over the past 12 months. The advance was primarily driven by a 9.6-percent rise in nonagricultural industrial supplies and materials prices. Consumer goods prices recorded no change in April.

SELECTED APRIL HIGHLIGHTS

Import Prices

Imports by Locality of Origin: Prices for imports from China edged down 0.1 percent in April, after rising 0.2 percent in March and 0.1 percent in February. Despite the recent increases, import prices from China fell 1.2 percent over the past year and have not risen on a 12-month basis since October 2014. In contrast, the price indexes for imports from Mexico, Canada, and the European Union all increased in April, rising 2.2 percent, 0.6 percent, and 0.2 percent, respectively. Prices for imports from Japan recorded no change in April following a 0.1-percent advance in March and a 0.2-percent rise in February.

Nonfuel Industrial Supplies and Materials: Prices for nonfuel industrial supplies and materials increased 0.8 percent in April, after advancing 1.5 percent the previous month. The April rise was led by a 2.6-percent advance in building materials prices.

Finished Goods: Prices for each of the major finished goods categories increased in April. Automotive vehicles prices increased 0.5 percent, the largest monthly advance for the index since a 0.7-percent rise in April 2012. The price indexes for capital goods and consumer goods each ticked up 0.1 percent in April. Capital goods prices declined 0.3 percent over the past year and prices for consumer goods advanced 0.2 percent.

Foods, Feeds, and Beverages: Foods, feeds, and beverages prices advanced 0.3 percent in April following a 0.5-percent decrease in March. The April increase was led by a 3.6-percent rise in fruit prices, which also advanced 33.0 percent over the past 12 months.

Transportation Services: Import air passenger fares decreased 3.2 percent in April, after declining 6.4 percent over the previous 3 months. The April decline was driven by a 7.5-percent drop in European fares. The index for import air passenger fares declined 9.1 percent between April 2016 and April 2017. Import air freight prices increased 0.7 percent in April and 7.5 percent over the past 12 months.

Export Prices

Nonagricultural Industrial Supplies and Materials: Nonagricultural industrial supplies and materials prices edged down 0.1 percent for the second consecutive month in April. The decrease was led by lower prices for chemicals, coal, and paper stocks.

Finished Goods: Finished goods prices were mostly up in April. Capital goods prices increased 0.2 percent for the fifth consecutive month and have not recorded a monthly decline since October. Prices for automotive vehicles advanced 0.3 percent, driven by a 0.7-percent rise in non-engine automobile parts. The price index for consumer goods recorded no change in April, after rising 0.3 percent in March.

Transportation Services: Export air passenger fares declined 5.8 percent in April following a 3.0-percent advance in March. The April downturn was led by a 10.1-percent decrease in European fares. The index for export air passenger fares fell 1.4 percent for the year ended in April. Lower European and Asian fares over the past year both contributed to the decline. Prices for export air freight decreased 0.2 percent in April and rose 3.2 percent over the past year.

Import and Export Price Index data for May 2017 are scheduled for release on Thursday, June 15, 2017 at 8:30 a.m. (EDT).

Table 1. U.S. import price indexes and percent changes for selected categories of goods: April 2016 to April 2017

[2000=100, unless otherwise noted]

Description	End Use	Relative importance Mar. 2017 ¹	Index		Percent change				
			Mar. 2017	Apr. 2017	Annual Apr. 2016 to Apr. 2017	Monthly			
						Dec. 2016 to Jan. 2017	Jan. 2017 to Feb. 2017	Feb. 2017 to Mar. 2017	Mar. 2017 to Apr. 2017
All commodities		100.000	122.8	123.4	4.1	0.6	0.3	0.1	0.5
All imports excluding food and fuels (Dec. 2010=100)		84.519	98.7	99.0	1.0	0.1	0.3	0.2	0.3
All imports excluding petroleum		91.242	111.6	112.0	1.4	0.1	0.3	0.1	0.4
All imports excluding fuels (Dec. 2001=100)		90.606	115.7	116.0	1.1	-0.1	0.4	0.2	0.3
Foods, feeds, & beverages	0	6.087	177.8	178.4	3.3	-1.3	1.0	-0.5	0.3
Agricultural foods, feeds & beverages, excluding distilled beverages.....	00	4.736	193.8	194.9	3.3	-1.9	1.2	-0.6	0.6
Nonagricultural foods (fish, distilled beverages).....	01	1.351	141.9	141.3	3.4	1.0	0.2	-0.4	-0.4
Industrial supplies & materials	1	22.863	170.8	172.7	19.2	2.9	1.0	0.5	1.1
Industrial supplies & materials excluding petroleum.....		14.105	147.2	148.5	7.9	1.2	1.0	1.0	0.9
Industrial supplies & materials excluding fuels (Dec. 2001=100).....		13.469	166.8	168.1	6.9	0.6	1.4	1.5	0.8
Industrial supplies & materials, durable....		8.373	157.0	158.6	9.0	0.7	1.9	1.6	1.0
Industrial supplies & materials nondurable excluding petroleum.....		5.096	134.8	135.8	6.5	1.9	-0.4	0.1	0.7
Fuels & lubricants.....	10	9.394	178.6	181.5	42.7	6.1	0.4	-0.9	1.6
Petroleum & petroleum products.....	100	8.758	193.0	196.1	43.8	5.7	0.9	-0.4	1.6
Crude.....	10000	6.220	198.0	204.0	46.9	4.5	2.3	-0.2	3.0
Fuels, n.e.s.-coals & gas.....	101	0.482	101.3	104.4	45.0	13.7	-8.1	-10.2	3.1
Gas-natural.....	10110	0.359	79.9	83.1	48.9	11.6	-10.2	-13.6	4.0
Paper & paper base stocks.....	11	0.534	105.1	106.7	-0.5	-0.3	-0.2	0.0	1.5
Materials associated with nondurable supplies & materials.....	12	4.630	154.4	155.0	4.3	0.5	0.7	1.5	0.4
Selected building materials.....	13	1.416	141.9	145.6	7.1	1.1	0.9	1.3	2.6
Unfinished metals related to durable goods.....	14	3.509	214.3	215.5	17.8	1.2	3.6	2.8	0.6
Finished metals related to durable goods.....	15	1.692	146.5	148.6	2.6	0.1	0.6	0.5	1.4
Nonmetals related to durable goods.....	16	1.688	109.2	109.4	0.7	0.0	0.8	0.5	0.2
Capital goods	2	27.423	88.8	88.9	-0.3	-0.1	0.1	0.1	0.1
Electric generating equipment.....	20	3.305	116.2	116.1	0.2	-0.2	0.0	0.2	-0.1
Nonelectrical machinery.....	21	21.507	81.2	81.4	-0.4	-0.1	0.1	0.1	0.2
Transportation equipment excluding motor vehicles (Dec. 2001=100).....	22	2.611	137.1	136.9	-0.3	0.1	0.1	0.1	-0.1
Automotive vehicles, parts & engines	3	16.230	110.1	110.7	0.4	-0.4	0.0	0.0	0.5
Consumer goods, excluding automotives	4	27.397	107.0	107.1	0.2	0.4	0.2	-0.1	0.1
Nondurables, manufactured.....	40	13.449	121.5	121.6	1.5	1.0	0.3	0.0	0.1
Durables, manufactured.....	41	12.636	93.2	93.3	-1.1	-0.3	0.0	-0.1	0.1
Nonmanufactured consumer goods.....	42	1.313	114.9	116.3	-1.8	0.1	2.6	-3.0	1.2

¹ Relative importance figures are based on 2015 trade values.

NOTES: Data may be revised in each of the 3 months after original publication.

Dash = Not available

Table 2. U.S. export price indexes and percent changes for selected categories of goods: April 2016 to April 2017

[2000=100, unless otherwise noted]

Description	End Use	Relative importance Mar. 2017 ¹	Index		Percent change				
			Mar. 2017	Apr. 2017	Annual Apr. 2016 to Apr. 2017	Monthly			
						Dec. 2016 to Jan. 2017	Jan. 2017 to Feb. 2017	Feb. 2017 to Mar. 2017	Mar. 2017 to Apr. 2017
All commodities.....		100.000	122.1	122.3	3.0	0.2	0.3	0.1	0.2
Agricultural commodities.....		9.548	179.8	180.4	4.6	0.4	1.4	0.8	0.3
All exports excluding food and fuels (Dec. 2010=100).....		83.426	98.9	98.8	0.6	-0.1	0.5	0.3	-0.1
Nonagricultural commodities.....		90.453	117.8	117.9	2.9	0.2	0.3	0.1	0.1
Foods, feeds, & beverages.....	0	8.868	181.6	183.0	5.1	0.6	1.4	0.9	0.8
Agricultural foods, feeds & beverages, excluding distilled beverages.....	00	8.252	181.0	182.1	4.6	0.5	1.5	0.8	0.6
Nonagricultural foods (fish, distilled beverages).....	01	0.616	197.7	204.9	11.4	2.1	-0.3	3.3	3.6
Industrial supplies & materials.....	1	29.816	147.2	146.9	9.4	0.5	0.4	0.0	-0.2
Industrial supplies & materials, durable....		10.726	159.4	159.1	5.5	0.5	1.5	1.2	-0.2
Industrial supplies & materials, nondurable.....		19.091	141.6	141.3	11.8	0.7	-0.3	-0.6	-0.2
Agricultural industrial supplies & materials.....	10	1.296	177.8	175.5	4.8	0.1	1.0	1.3	-1.3
Nonagricultural industrial supplies & materials.....		28.520	146.2	146.0	9.6	0.6	0.4	-0.1	-0.1
Fuels & lubricants.....	11	7.707	161.0	164.0	35.1	2.9	-2.2	-2.8	1.9
Nonagricultural supplies & materials excluding fuels & building materials....	12	19.779	152.7	151.3	2.4	-0.3	1.5	0.9	-0.9
Selected building materials.....	13	1.034	119.7	120.5	5.2	-0.4	0.2	2.1	0.7
Capital goods.....	2	38.228	107.5	107.7	0.6	0.2	0.2	0.2	0.2
Electrical generating equipment.....	20	3.958	112.6	112.7	0.2	0.4	-0.3	0.6	0.1
Nonelectrical machinery.....	21	25.034	93.7	93.9	-0.4	-0.1	0.1	0.1	0.2
Transportation equipment excluding motor vehicles (Dec. 2001=100).....	22	9.235	169.6	169.9	3.7	1.1	0.5	0.1	0.2
Automotive vehicles, parts & engines.....	3	10.336	113.1	113.4	0.3	0.5	0.0	0.0	0.3
Consumer goods, excluding automotives.....	4	12.753	108.0	108.0	-2.1	-1.0	0.0	0.3	0.0
Nondurables, manufactured.....	40	6.153	103.5	103.6	-2.0	-1.9	0.1	0.1	0.1
Durables, manufactured.....	41	5.195	106.9	106.9	-1.5	-0.3	0.0	0.2	0.0

¹ Relative importance figures are based on 2015 trade values.

NOTES: Data may be revised in each of the 3 months after original publication.

Dash = Not available

Table 3. U.S. import price indexes and percent changes for selected industries: April 2016 to April 2017
 [December 2005=100, unless otherwise noted]

Description	NAICS	Relative importance Mar. 2017 ¹	Index		Percent change				
			Mar. 2017	Apr. 2017	Annual Apr. 2016 to Apr. 2017	Monthly			
						Dec. 2016 to Jan. 2017	Jan. 2017 to Feb. 2017	Feb. 2017 to Mar. 2017	Mar. 2017 to Apr. 2017
Nonmanufacturing		8.843	97.5	99.8	35.2	3.6	1.8	-1.6	2.4
Agriculture, forestry, fishing and hunting	11	2.009	180.4	182.3	8.4	-1.4	3.0	-3.0	1.1
Crop production.....	111	1.588	190.8	194.4	9.0	-3.1	3.0	-3.1	1.9
Animal production (Dec. 2014=100).....	112	0.206	79.1	77.9	-7.8	5.9	1.1	-1.1	-1.5
Mining	21	6.834	87.9	90.3	45.2	5.3	1.5	-1.2	2.7
Oil and gas extraction.....	211	6.561	87.6	90.2	47.1	5.0	1.6	-1.4	3.0
Mining (except oil and gas) (Dec. 2006=100).....	212	0.273	107.7	103.7	8.4	9.2	-0.3	2.3	-3.7
Manufacturing		90.864	109.8	110.1	1.7	0.3	0.2	0.3	0.3
Manufacturing, part 1	31	11.893	123.7	123.8	0.4	-0.2	0.2	-0.1	0.1
Food manufacturing.....	311	3.446	153.8	154.1	2.5	-0.8	0.9	-0.2	0.2
Beverage and tobacco product manufacturing.....	312	1.060	118.3	118.2	-0.4	0.0	0.2	0.2	-0.1
Textile mills (Dec. 2011=100).....	313	0.399	98.2	98.4	-0.2	0.1	0.0	0.2	0.2
Textile product mills.....	314	0.931	108.5	108.5	-0.7	-0.4	-0.3	0.4	0.0
Apparel manufacturing.....	315	4.210	111.1	111.2	-0.3	0.0	0.1	-0.1	0.1
Leather and allied product manufacturing.....	316	1.846	122.9	122.9	-0.6	-0.1	0.0	-0.1	0.0
Manufacturing, part 2	32	17.566	120.5	120.6	6.7	2.0	0.2	0.8	0.1
Wood product manufacturing.....	321	0.866	122.5	127.5	12.1	1.6	2.0	1.9	4.1
Paper manufacturing.....	322	1.019	104.3	104.8	-0.6	-0.2	0.0	0.0	0.5
Printing and related support activities (Dec. 2016=100).....	323	0.222	100.1	100.1	-	-0.1	0.2	0.0	0.0
Petroleum and coal products manufacturing.....	324	2.284	83.8	82.3	34.5	8.1	-3.2	0.1	-1.8
Chemical manufacturing.....	325	9.931	135.7	136.1	4.5	1.7	0.8	0.9	0.3
Plastics and rubber products manufacturing.....	326	2.236	118.0	117.9	1.0	0.0	0.0	1.1	-0.1
Nonmetallic mineral product manufacturing.....	327	1.009	128.4	128.4	-1.2	0.0	-0.2	-0.2	0.0
Manufacturing, part 3	33	61.405	103.5	103.8	0.6	-0.2	0.3	0.2	0.3
Primary metal manufacturing.....	331	4.190	141.8	142.6	16.4	1.5	3.6	2.4	0.6
Fabricated metal product manufacturing... ..	332	3.063	121.3	122.4	-0.1	-0.1	0.1	0.1	0.9
Machinery manufacturing.....	333	7.069	116.1	116.4	-0.2	-0.3	0.1	0.1	0.3
Computer and electronic product manufacturing.....	334	17.617	75.9	75.9	-1.0	-0.3	0.0	0.1	0.0
Electrical equipment, appliance, and component manufacturing.....	335	4.887	114.0	114.8	0.1	-0.1	-0.3	-0.2	0.7
Transportation equipment manufacturing..	336	17.522	109.4	109.9	0.2	-0.4	0.1	-0.1	0.5
Furniture and related product manufacturing.....	337	1.731	115.2	115.3	0.2	0.4	0.1	0.0	0.1
Miscellaneous manufacturing.....	339	5.325	117.6	117.8	-1.6	-0.4	0.2	0.1	0.2

¹ Relative importance figures are based on 2015 trade values.

NOTES: Data may be revised in each of the 3 months after original publication.

Dash = Not available

Table 4. U.S. export price indexes and percent changes for selected industries: April 2016 to April 2017
 [December 2005=100, unless otherwise noted]

Description	NAICS	Relative importance Mar. 2017 ¹	Index		Percent change				
			Mar. 2017	Apr. 2017	Annual Apr. 2016 to Apr. 2017	Monthly			
						Dec. 2016 to Jan. 2017	Jan. 2017 to Feb. 2017	Feb. 2017 to Mar. 2017	Mar. 2017 to Apr. 2017
Nonmanufacturing.....		7.322	130.5	130.8	13.5	2.2	0.4	-2.2	0.2
Agriculture, forestry, fishing and hunting.....	11	4.709	158.0	158.6	6.4	0.7	2.6	0.8	0.4
Crop production.....	111	4.344	164.2	164.3	6.3	0.4	2.8	0.4	0.1
Mining.....	21	2.613	75.3	75.1	28.8	4.6	-2.9	-7.4	-0.3
Mining (except oil and gas).....	212	1.253	103.5	99.5	30.7	8.4	4.7	-2.7	-3.9
Manufacturing.....		91.092	112.1	112.3	2.1	0.2	0.2	0.2	0.2
Manufacturing, part 1.....	31	7.074	137.2	137.1	3.2	0.4	0.1	1.0	-0.1
Food manufacturing.....	311	4.737	154.8	155.2	4.6	0.5	-0.1	0.8	0.3
Beverage and tobacco product manufacturing.....	312	0.709	112.1	109.7	2.1	-1.4	1.5	2.8	-2.1
Textile mills (Dec. 2016=100).....	313	0.678	101.8	101.6	-	1.1	0.4	0.3	-0.2
Leather and allied product manufacturing (Dec. 2016=100).....	316	0.289	100.1	99.9	-	0.1	0.2	-0.2	-0.2
Manufacturing, part 2.....	32	23.942	107.2	107.3	5.7	-0.5	0.0	0.0	0.1
Paper manufacturing.....	322	1.597	114.5	116.3	-4.3	-0.1	-0.6	-2.6	1.6
Petroleum and coal products manufacturing.....	324	5.175	93.2	95.3	38.7	1.9	-2.1	-1.5	2.3
Chemical manufacturing.....	325	13.241	113.8	112.8	-0.6	-1.8	0.9	0.6	-0.9
Plastics and rubber products manufacturing.....	326	2.315	114.9	114.2	-1.0	0.9	0.0	0.3	-0.6
Nonmetallic mineral product manufacturing.....	327	0.850	113.7	113.8	1.6	0.2	-0.1	1.0	0.1
Manufacturing, part 3.....	33	60.075	111.6	111.9	0.7	0.4	0.3	0.2	0.3
Primary metal manufacturing.....	331	4.017	136.9	138.1	5.1	0.6	1.4	1.2	0.9
Fabricated metal product manufacturing.....	332	3.308	137.3	137.3	6.0	2.9	2.5	0.0	0.0
Machinery manufacturing.....	333	10.271	125.3	125.6	-0.4	-0.2	0.1	0.1	0.2
Computer and electronic product manufacturing.....	334	14.182	82.5	82.7	-1.4	-0.4	-0.1	0.0	0.2
Electrical equipment, appliance, and component manufacturing.....	335	3.982	112.8	112.9	0.4	0.2	-0.1	0.5	0.1
Transportation equipment manufacturing.....	336	18.498	124.1	124.3	1.9	0.7	0.2	0.1	0.2
Furniture and related product manufacturing (Dec. 2011=100).....	337	0.456	117.4	117.3	3.3	0.4	-0.2	-0.2	-0.1
Miscellaneous manufacturing.....	339	5.360	118.8	118.8	-1.8	0.1	0.3	0.3	0.0

¹ Relative importance figures are based on 2015 trade values.

NOTES: Data may be revised in each of the 3 months after original publication.

Dash = Not available

Table 5. U.S. import price indexes and percent changes for selected categories of goods: April 2016 to April 2017

[2000=100, unless otherwise noted]

Description	Harmonized system	Relative importance Mar. 2017 ¹	Index		Percent change				
			Mar. 2017	Apr. 2017	Annual Apr. 2016 to Apr. 2017	Monthly			
						Dec. 2016 to Jan. 2017	Jan. 2017 to Feb. 2017	Feb. 2017 to Mar. 2017	Mar. 2017 to Apr. 2017
Live animals; animal products.....	I	1.482	191.7	192.3	2.6	0.6	1.2	-0.1	0.3
Meat and edible meat offal.....	02	0.435	239.4	242.8	5.3	-1.7	2.8	1.1	1.4
Fish and crustaceans, molluscs and other aquatic invertebrates.....	03	0.753	143.8	143.2	3.7	1.4	-0.6	-1.2	-0.4
Vegetable products.....	II	2.021	212.2	217.2	11.9	-3.2	3.1	-2.8	2.4
Edible vegetables, roots, and tubers.....	07	0.360	410.3	422.2	-5.1	-16.5	2.8	-2.2	2.9
Edible fruit and nuts; peel of citrus fruit or melons.....	08	0.842	124.8	129.8	40.3	-1.1	2.4	-1.4	4.0
Coffee, tea, mate and spices.....	09	0.368	236.7	232.8	2.8	2.2	-0.2	-0.8	-1.6
Animal or vegetable fats and oils (Dec. 2009=100).....	III	0.297	113.7	113.3	3.8	-1.3	3.0	-5.1	-0.4
Prepared foodstuffs, beverages, and tobacco.....	IV	2.677	159.7	159.0	-0.4	-0.8	0.2	0.3	-0.4
Sugars and sugar confectionary (Dec. 2012=100).....	17	0.184	86.0	86.8	0.9	-2.7	0.1	-0.1	0.9
Cocoa and cocoa preparations (Dec. 2009=100).....	18	0.201	98.8	94.3	-15.4	-3.8	-2.8	0.8	-4.6
Preparations of vegetables, fruit, nuts, or other parts of plants.....	20	0.341	158.4	157.4	1.3	-0.9	-0.4	0.0	-0.6
Beverages, spirits, and vinegar.....	22	1.001	128.0	127.8	-0.6	-0.2	0.2	0.2	-0.2
Mineral products.....	V	9.252	177.7	180.8	42.0	6.3	0.1	-0.8	1.7
Mineral fuels, oils and residuals, bituminous substances and mineral waxes.....	27	9.010	175.6	179.0	44.1	6.4	0.1	-0.8	1.9
Products of the chemical or allied industries.....	VI	9.379	152.6	152.5	4.0	2.0	1.1	0.7	-0.1
Inorganic chemicals.....	28	0.567	285.3	289.5	10.1	3.8	2.1	6.5	1.5
Organic chemicals.....	29	2.411	124.8	125.4	4.3	1.0	0.9	1.7	0.5
Pharmaceutical products.....	30	4.351	149.1	148.4	4.7	3.1	1.3	-0.4	-0.5
Fertilizers (Dec. 2009=100).....	31	0.279	79.2	76.8	-1.3	2.1	3.7	-0.1	-3.0
Tanning extracts; dye, pigments, varnish, paints & putty (Dec. 2011=100).....	32	0.182	101.9	107.2	9.9	0.3	0.0	0.1	5.2
Essential oils and resinoids (Dec. 2016=100).....	33	0.546	100.0	98.6	-	0.2	0.0	-0.2	-1.4
Miscellaneous chemical products.....	38	0.685	104.1	103.9	2.6	0.7	0.4	0.7	-0.2
Plastics and articles thereof; rubber and articles thereof.....	VII	3.450	139.7	139.9	2.9	0.4	0.7	0.7	0.1
Plastics and articles thereof.....	39	2.174	140.5	140.7	0.7	0.1	0.2	0.9	0.1
Rubber and articles thereof.....	40	1.276	139.7	139.8	6.8	1.0	1.5	0.4	0.1
Raw hides, skins, leather, furskins, travel goods, etc.....	VIII	0.684	123.1	122.9	-1.2	0.0	0.0	-0.2	-0.2
Articles of leather; travel goods, bags, etc. of various materials.....	42	0.653	128.3	128.0	-1.0	-0.2	0.0	-0.2	-0.2
Wood, wood charcoal, cork, straw, basketware and wickerwork.....	IX	0.898	148.8	154.9	11.9	1.6	1.7	1.9	4.1
Wood and articles of wood; wood charcoal (Dec. 2014=100).....	44	0.873	102.5	106.8	12.4	1.6	1.8	2.0	4.2
Woodpulp, recovered paper, and paper products.....	X	1.084	109.7	110.1	0.3	-0.3	0.1	0.0	0.4
Paper and paperboard; articles of paper pulp, paper or paperboard.....	48	0.726	103.8	103.3	-1.2	0.0	0.1	0.1	-0.5
Printed matter (Dec. 2015=100).....	49	0.220	106.0	106.0	5.6	-0.1	0.2	0.0	0.0
Textile and textile articles.....	XI	5.355	113.2	113.3	-0.1	0.0	0.0	0.1	0.1

See footnotes at end of table.

Table 5. U.S. import price indexes and percent changes for selected categories of goods: April 2016 to April 2017 — Continued

[2000=100, unless otherwise noted]

Description	Harmonized system	Relative importance Mar. 2017 ¹	Index		Percent change				
			Mar. 2017	Apr. 2017	Annual Apr. 2016 to Apr. 2017	Monthly			
						Dec. 2016 to Jan. 2017	Jan. 2017 to Feb. 2017	Feb. 2017 to Mar. 2017	Mar. 2017 to Apr. 2017
Articles of apparel and clothing accessories, knitted or crocheted.....	61	2.202	103.8	103.9	0.2	0.2	-0.1	0.0	0.1
Articles of apparel and clothing accessories, not knitted or crocheted.....	62	1.835	119.1	119.1	-0.7	-0.2	0.2	0.0	0.0
Made-up or worn textile articles.....	63	0.653	103.7	103.7	0.4	-0.4	0.1	0.4	0.0
Headgear, umbrellas, artificial flowers, etc.....	XII	1.523	122.3	122.3	-0.6	0.0	0.0	-0.1	0.0
Footwear and parts of such articles.....	64	1.289	121.4	121.4	-0.6	0.0	0.0	-0.1	0.0
Stone, plaster, cement, asbestos, ceramics, glass etc.....	XIII	0.941	130.0	129.9	-1.5	-0.1	-0.2	-0.2	-0.1
Articles of stone, plaster, cement, asbestos, or mica (Dec. 2015=100).....	68	0.325	96.3	96.1	-3.7	0.0	-0.5	-0.3	-0.2
Ceramic products.....	69	0.272	136.6	136.7	-0.6	0.0	0.0	-0.4	0.1
Glass and glassware.....	70	0.344	129.7	129.7	-0.1	-0.2	-0.1	0.1	0.0
Pearls, stones, precious metals, imitation jewelry, and coins.....	XIV	2.812	169.8	170.5	1.8	0.0	1.8	1.2	0.4
Base metals and articles of base metals. ...	XV	5.511	165.9	166.9	9.4	0.9	1.4	1.4	0.6
Iron and steel.....	72	1.352	195.9	198.7	27.8	5.1	3.0	3.0	1.4
Articles of iron or steel.....	73	1.635	138.9	140.6	1.5	0.2	0.1	0.4	1.2
Copper and articles thereof.....	74	0.391	275.9	270.9	9.1	-2.0	3.4	0.9	-1.8
Aluminum and articles thereof.....	76	0.806	128.8	129.9	7.6	0.3	2.2	3.0	0.9
Tools, implements, cutlery, spoons and forks, of base metal; parts thereof.....	82	0.434	122.8	122.9	-0.6	0.8	-0.1	0.1	0.1
Miscellaneous articles of base metal.....	83	0.517	135.4	136.7	0.1	-0.1	0.1	0.1	1.0
Machinery, electrical equipment, TV image and sound recorders, parts, etc.....	XVI	29.807	80.4	80.5	-0.6	-0.2	0.0	0.0	0.1
Machinery and mechanical appliances; parts thereof.....	84	14.813	85.8	86.0	0.0	0.0	0.2	0.2	0.2
Electrical machinery and equip, sound and TV recorders & reproducers, parts.....	85	14.994	75.4	75.3	-1.1	-0.7	0.0	-0.1	-0.1
Vehicles, aircraft, vessels and associated transport equipment.....	XVII	14.596	113.9	114.6	0.4	-0.3	0.1	0.0	0.6
Motor vehicles and their parts.....	87	13.101	112.6	113.3	0.5	-0.3	0.1	0.0	0.6
Aircraft, spacecraft, and parts thereof (Dec. 2002=100).....	88	1.362	118.5	118.6	-1.3	-0.1	0.0	-0.3	0.1
Optical, photo, measuring, medical & musical instruments; & timepieces.....	XVIII	3.856	101.4	101.5	-1.7	-0.9	-0.1	-0.1	0.1
Optical, photographic, measuring and medical instruments.....	90	3.530	98.1	98.2	-1.9	-0.8	-0.3	0.0	0.1
Clocks and watches and parts thereof.....	91	0.267	141.7	142.0	0.1	-0.8	1.1	-0.1	0.2
Miscellaneous manufactured articles.....	XX	4.301	111.4	111.4	-0.7	-0.3	0.0	0.1	0.0
Furniture & stuffed furnishings; lamps & lighting fittings, nesoi; prefab bldgs.....	94	2.648	116.4	116.4	-0.3	0.2	0.0	0.0	0.0
Toys, games and sports equipment; parts and accessories thereof.....	95	1.377	102.7	102.9	-0.7	-0.7	0.0	0.0	0.2
Miscellaneous manufactured articles.....	96	0.276	129.7	129.7	-4.1	-1.5	0.0	0.0	0.0

¹ Relative importance figures are based on 2015 trade values.

NOTES: Data may be revised in each of the 3 months after original publication.

Dash = Not available

Table 6. U.S. export price indexes and percent changes for selected categories of goods: April 2016 to April 2017

[2000=100, unless otherwise noted]

Description	Harmoni- zied system	Relative importance Mar. 2017 ¹	Index		Percent change				
			Mar. 2017	Apr. 2017	Annual Apr. 2016 to Apr. 2017	Monthly			
						Dec. 2016 to Jan. 2017	Jan. 2017 to Feb. 2017	Feb. 2017 to Mar. 2017	Mar. 2017 to Apr. 2017
Live animals; animal products.....	I	1.873	201.7	203.3	10.9	1.8	0.0	2.8	0.8
Meat & edible meat offal (Dec. 2006=100)...	02	1.082	158.2	159.1	9.1	0.9	0.3	5.3	0.6
Fish and crustaceans, mollusks and aquatic invertebrates (Dec. 2016=100).....	03	0.403	108.0	114.6	–	5.1	-0.7	3.4	6.1
Vegetable products.....	II	4.462	202.3	205.7	7.9	0.5	4.0	0.7	1.7
Edible fruit and nuts; peel of citrus fruit or melons.....	08	0.857	143.7	142.0	-7.6	1.0	-4.5	2.1	-1.2
Cereals.....	10	1.248	182.3	173.7	-2.3	3.9	2.2	2.3	-4.7
Oilseeds and misc. grains, seeds, fruits, plants, straw and fodder.....	12	1.715	207.2	191.6	2.2	-1.7	1.8	0.0	-7.5
Prepared foodstuffs, beverages, and tobacco.....	IV	3.064	147.3	147.8	1.0	-0.8	-0.3	0.6	0.3
Preparations of vegetables, fruit, nuts or other parts of plants (Dec. 2009=100)....	20	0.382	116.7	116.9	-1.8	-0.1	-0.1	0.1	0.2
Beverages, spirits, and vinegar (Dec. 2008=100).....	22	0.549	111.0	112.2	5.6	-1.7	-1.2	1.4	1.1
Residues and waste from the food industries; prepared animal feed.....	23	0.724	197.3	194.8	1.1	-2.0	0.4	-1.0	-1.3
Mineral products.....	V	8.005	191.0	193.2	37.5	2.8	-1.4	-2.6	1.2
Ores, slag and ash (Dec. 2012=100).....	26	0.553	93.1	93.7	27.0	-1.8	6.5	-0.6	0.6
Mineral fuels, oils and residuals, bituminous substances and mineral waxes.....	27	7.260	182.1	184.3	39.9	3.1	-1.9	-2.7	1.2
Products of the chemical or allied industries.....	VI	10.882	134.8	133.1	-1.8	-2.1	0.8	0.4	-1.3
Inorganic chemicals.....	28	0.850	177.7	167.9	-2.8	0.7	-0.8	-0.3	-5.5
Organic chemicals.....	29	2.603	135.3	130.7	-0.9	-4.3	3.5	1.5	-3.4
Pharmaceutical products.....	30	3.131	103.5	103.6	-2.7	-3.5	-0.1	0.3	0.1
Fertilizers (Dec. 2016=100).....	31	0.240	103.8	107.9	–	0.0	-0.2	4.0	3.9
Tanning or dyeing extracts, dyes, paints varnish, putty, & inks (Dec. 2015=100)....	32	0.522	97.9	98.2	-0.7	-0.7	0.5	0.2	0.3
Essential oils and resinoids; perfumery cosmetic or toilet preparations.....	33	0.812	131.8	131.8	-2.0	0.5	0.0	0.1	0.0
Soap; lubricants; waxes, polishing or scouring products; candles, pastes.....	34	0.515	116.1	114.5	-1.7	0.5	-0.2	-0.6	-1.4
Miscellaneous chemical products.....	38	1.769	145.7	145.1	-1.2	-0.7	0.1	-0.1	-0.4
Plastics and articles thereof; rubber and articles thereof.....	VII	5.166	139.1	138.8	1.7	0.0	0.8	1.1	-0.2
Plastics and articles thereof.....	39	4.141	132.7	132.5	0.5	-0.2	0.2	0.7	-0.2
Rubber and articles thereof.....	40	1.025	167.5	166.7	6.6	1.1	3.7	2.6	-0.5
Raw hides, skins, leather, furskins, travel goods, etc.....	VIII	0.353	124.3	123.8	4.5	0.7	0.9	0.9	-0.4
Wood, wood charcoal, cork, straw, baskets and wickerwork (Dec. 2014=100).....	IX	0.627	96.9	97.7	2.7	0.6	-1.4	4.6	0.8
Woodpulp, recovered paper, and paper products.....	X	2.179	129.0	123.7	2.1	0.9	0.7	2.4	-4.1
Woodpulp and recovered paper.....	47	0.742	149.1	131.6	7.4	3.2	0.4	6.8	-11.7
Paper and paperboard; articles of paper pulp, paper or paperboard.....	48	1.084	119.4	119.2	-0.4	-0.3	1.1	0.1	-0.2
Printed material (Dec. 2014=100).....	49	0.353	101.5	101.6	1.2	0.0	0.0	0.9	0.1
Textile and textile articles.....	XI	1.758	121.0	121.1	1.5	1.2	0.6	-0.6	0.1
Cotton, including yarns and woven fabrics thereof.....	52	0.468	129.9	130.0	15.5	3.4	1.7	1.1	0.1

See footnotes at end of table.

Table 6. U.S. export price indexes and percent changes for selected categories of goods: April 2016 to April 2017 — Continued

[2000=100, unless otherwise noted]

Description	Harmoni- zied system	Relative importance Mar. 2017 ¹	Index		Percent change				
			Mar. 2017	Apr. 2017	Annual	Monthly			
					Apr. 2016 to Apr. 2017	Dec. 2016 to Jan. 2017	Jan. 2017 to Feb. 2017	Feb. 2017 to Mar. 2017	Mar. 2017 to Apr. 2017
Stone, plaster, cement, asbestos, ceramics, glass etc.....	XIII	0.838	123.3	123.4	0.7	-0.4	-0.2	0.9	0.1
Articles of stone, plaster, cement, asbestos, or mica (Dec. 2015=100).....	68	0.278	101.0	101.2	0.7	-1.3	0.2	0.8	0.2
Glass and glassware.....	70	0.428	99.3	99.4	0.0	0.0	-0.4	0.1	0.1
Pearls, stones, precious metals, imitation jewelry, and coins.....	XIV	4.200	231.7	232.5	0.7	-0.1	1.9	1.8	0.3
Base metals and articles of base metals. ...	XV	4.973	152.8	153.5	8.3	1.2	1.2	1.3	0.5
Iron and steel.....	72	1.065	160.8	161.6	16.1	2.8	-0.8	3.6	0.5
Copper and articles thereof.....	74	0.479	169.3	169.6	12.0	-2.8	1.8	0.1	0.2
Aluminum and articles thereof.....	76	0.850	112.7	113.7	10.6	0.1	2.4	2.9	0.9
Tools, implements, cutlery, spoons and forks, of base metal (Dec. 2015=100).	82	0.349	99.5	99.5	-0.2	-0.2	-0.3	0.0	0.0
Miscellaneous articles of base metal.....	83	0.347	148.2	148.2	0.0	0.0	0.0	0.3	0.0
Machinery, electrical equipment, TV image and sound recorders, parts, etc.....	XVI	28.699	95.9	96.1	0.2	0.2	0.1	0.1	0.2
Machinery and mechanical appliances; parts thereof.....	84	16.860	113.4	113.8	0.8	0.3	0.3	0.1	0.4
Electrical machinery and equipment and parts and accessories thereof.....	85	11.839	77.0	77.0	-0.8	0.0	-0.1	0.1	0.0
Vehicles, aircraft, vessels and associated transport equipment.....	XVII	14.967	132.3	132.6	0.9	0.4	0.1	0.0	0.2
Motor vehicles and their parts.....	87	8.702	115.1	115.4	0.4	0.6	0.0	0.0	0.3
Optical, photo, measuring, medical & musical instruments; & timepieces.....	XVIII	6.056	106.4	106.4	-0.6	0.0	0.4	0.1	0.0
Miscellaneous manufactured articles.....	XX	1.492	112.7	112.4	0.7	0.3	0.2	-0.1	-0.3
Furniture; stuffed furnishings; lamps and lighting fittings nesoi;.....	94	0.899	128.2	128.2	2.2	0.3	-0.1	-0.2	0.0
Toys, games and sports equipment; parts and accessories thereof.....	95	0.438	89.3	88.7	-0.9	0.2	0.0	-0.2	-0.7

¹ Relative importance figures are based on 2015 trade values.

NOTES: Data may be revised in each of the 3 months after original publication.

Dash = Not available

Table 7. U.S. import price indexes and percent changes by locality of origin: April 2016 to April 2017
 [2000=100, unless otherwise noted]

Description	Relative importance Mar. 2017 ¹	Index		Percent change				
		Mar. 2017	Apr. 2017	Annual	Monthly			
				Apr. 2016 to Apr. 2017	Dec. 2016 to Jan. 2017	Jan. 2017 to Feb. 2017	Feb. 2017 to Mar. 2017	Mar. 2017 to Apr. 2017
Industrialized Countries²	100.000	119.8	120.3	4.6	0.5	0.6	0.3	0.4
Nonmanufacturing.....	9.009	144.1	147.2	36.4	5.2	1.6	3.1	2.2
Manufacturing.....	90.519	117.3	117.7	2.3	0.1	0.5	0.0	0.3
Other Countries³	100.000	119.4	119.8	3.3	-0.1	0.4	-0.1	0.3
Nonmanufacturing.....	8.911	197.1	201.5	36.0	2.4	2.6	-3.1	2.2
Manufacturing.....	90.886	102.8	103.0	0.6	-0.3	0.2	0.1	0.2
Canada	100.000	126.7	127.5	11.9	2.0	1.1	0.7	0.6
Nonmanufacturing.....	24.861	138.7	141.6	38.6	5.5	1.5	3.4	2.1
Manufacturing.....	74.339	127.2	127.4	5.2	0.9	1.1	-0.2	0.2
European Union⁴	100.000	132.3	132.5	1.0	0.5	-0.1	0.2	0.2
Manufacturing.....	99.420	128.9	129.2	1.0	0.5	-0.1	0.2	0.2
France (Dec. 2003=100)	100.000	121.4	121.6	-0.8	-0.5	-0.2	0.3	0.2
Germany (Dec. 2003=100)	100.000	113.3	113.8	0.6	1.3	0.2	0.0	0.4
United Kingdom (Dec. 2003=100)	100.000	117.7	117.3	-0.9	0.0	0.2	0.0	-0.3
Latin America⁵	100.000	143.0	144.3	6.3	-0.1	0.7	-0.2	0.9
Nonmanufacturing.....	18.242	224.6	229.6	35.2	1.1	1.9	-3.4	2.2
Manufacturing.....	81.422	119.7	120.4	1.3	-0.3	0.4	0.5	0.6
Mexico (Dec. 2003=100)	100.000	124.1	126.8	1.9	-1.2	0.4	0.5	2.2
Nonmanufacturing (Dec. 2008=100).....	8.764	119.6	122.9	35.5	-2.4	1.5	3.0	2.8
Manufacturing (Dec. 2008=100).....	90.920	86.3	88.1	-0.7	-1.2	0.3	0.2	2.1
Pacific Rim (Dec. 2003=100)⁶	100.000	98.4	98.5	-0.2	-0.1	0.1	0.1	0.1
China (Dec. 2003=100)	100.000	100.2	100.1	-1.2	-0.3	0.1	0.2	-0.1
Japan	100.000	96.5	96.5	1.4	-0.4	0.2	0.1	0.0
Asian NICs⁷	100.000	85.2	85.6	1.2	0.0	0.5	0.5	0.5
ASEAN (Dec. 2003=100)⁸	100.000	97.8	97.9	1.2	0.1	0.3	0.1	0.1
Asia Near East (Dec. 2003=100)⁹	100.000	158.7	157.8	20.6	3.4	2.9	-2.3	-0.6

¹ Relative importance figures are based on 2015 trade values.

² Western Europe, Canada, Japan, Australia, New Zealand, and South Africa.

³ Eastern Europe, Latin America, OPEC countries, and other countries in Asia, Africa, and the Western Hemisphere.

⁴ European Union countries.

⁵ Mexico, Central America, South America, and the Caribbean.

⁶ China, Japan, Australia, Brunei, Indonesia, Macao, Malaysia, New Zealand, Papua New Guinea, Philippines, and the Asian Newly Industrialized Countries.

⁷ Asian Newly Industrialized Countries - Hong Kong, Singapore, South Korea, and Taiwan.

⁸ Association of Southeast Asian Nations - Brunei, Cambodia, Indonesia, Laos, Malaysia, Myanmar, Philippines, Singapore, Thailand, and Vietnam.

⁹ Bahrain, Iran, Iraq, Israel, Jordan, Kuwait, Lebanon, Oman, Qatar, Saudi Arabia, Syria, United Arab Emirates, and Yemen.

NOTES: Data may be revised in each of the 3 months after original publication.

Regions are not mutually exclusive.

Dash = Not available

Table 8. U.S. international price indexes and percent changes for selected transportation services: April 2016 to April 2017

[2000=100, unless otherwise noted]

Description	Relative importance Mar. 2017 ¹	Index		Percent change				
		Mar. 2017	Apr. 2017	Annual	Monthly			
				Apr. 2016 to Apr. 2017	Dec. 2016 to Jan. 2017	Jan. 2017 to Feb. 2017	Feb. 2017 to Mar. 2017	Mar. 2017 to Apr. 2017
Air Freight								
Import Air Freight	100.000	162.6	163.8	7.5	-1.9	-0.2	0.6	0.7
Europe (Dec. 2003=100).....	24.754	136.7	136.7	0.7	-0.7	0.4	0.1	0.0
Asia.....	62.216	150.0	152.4	11.9	-2.6	-0.8	1.1	1.6
Export Air Freight	100.000	159.1	158.8	3.2	0.8	0.5	1.4	-0.2
Europe (Dec. 2006=100).....	32.751	147.0	147.0	1.0	0.6	0.5	-0.2	0.0
Inbound Air Freight	100.000	153.4	153.8	5.1	-0.9	-0.4	0.3	0.3
Europe (Dec. 2003=100).....	27.083	132.2	131.1	-2.5	0.8	0.4	-0.5	-0.8
Asia.....	59.117	140.6	142.8	9.8	-2.8	-1.0	0.7	1.6
Outbound Air Freight	100.000	139.4	136.2	-1.4	2.4	-0.6	0.4	-2.3
Europe (Dec. 2003=100).....	30.619	144.4	144.4	1.4	1.9	-1.6	0.6	0.0
Asia.....	46.699	134.4	127.8	-2.9	4.0	0.1	0.3	-4.9
Air Passenger Fares								
Import Air Passenger Fares	100.000	174.3	168.7	-9.1	-1.7	-0.8	-4.0	-3.2
Europe.....	41.785	197.5	182.7	-17.1	9.7	0.3	-8.6	-7.5
Asia.....	21.327	128.0	128.3	-5.2	-8.5	-4.0	-0.4	0.2
Latin America/Caribbean.....	10.184	162.1	163.5	12.7	-11.7	2.3	2.4	0.9
Export Air Passenger Fares	100.000	154.1	145.2	-1.4	0.5	-11.6	3.0	-5.8
Europe.....	33.932	211.4	190.0	-3.9	-6.3	5.4	-1.7	-10.1
Asia.....	26.459	127.5	117.8	-4.8	10.1	-20.5	3.2	-7.6
Latin America/Caribbean.....	26.969	173.4	166.9	11.6	2.6	-9.6	9.5	-3.7

¹ Relative importance figures are based on 2015 trade values.

NOTES: Data may be revised in each of the 3 months after original publication.

Dash = Not available

TECHNICAL NOTE

Import and Export Merchandise and Services Price Indexes - All indexes use a modified Laspeyres formula and are not seasonally adjusted. Price indexes are reweighted annually, with a 2-year lag in the weights. Published series use a base year of 2000=100 where possible. More detailed index series and additional information may be obtained at www.bls.gov/mxp or by calling (202) 691-7101.

Merchandise Goods Classification Systems - The merchandise price indexes are published using three classification systems. Items are classified by end use according to the Bureau of Economic Analysis Classification System, by industry according to the North American Industry Classification System (NAICS), and by product category according to the Harmonized System (HS). While classification by end use and product category are self-explanatory, some notes are in order for classifying items by industry. In the NAICS imports and exports tables, items are classified by output industry, not input industry. As an example, NAICS import index 326 (plastics and rubber products manufacturing) include outputs such as manufactured plastic rather than inputs such as petroleum. The NAICS classification structure also matches the classification system used by the Producer Price Index (PPI) to produce the NAICS primary products indexes.

Import Price Indexes - Products have been classified by the Harmonized Tariff Schedule of the United States Annotated (TSUSA). Import prices are based on U.S. dollar prices paid by the U.S. importer. The prices are generally either "free on board" (f.o.b.) foreign port or "cost, insurance, and freight" (c.i.f.) U.S. port transaction prices, depending on the practices of the individual industry. The index for crude petroleum is calculated from data collected by the U.S. Department of Energy.

Export Price Indexes - Products have been classified by the Harmonized Schedule B classification system of the U.S. Bureau of the Census. The prices used are generally either "free alongside ship" (f.a.s.) factory or "free on board" (f.o.b.) transaction prices, depending on the practices of the individual industry. Prices used in the grain index, excluding rice, are obtained from the U.S. Department of Agriculture.

Services Price Indexes - Starting in September 2008, the import air passenger fares indexes represent changes in the average revenue per passenger received by foreign carriers from U.S. residents and are calculated from data obtained from an airline consulting service. These data include tickets sold by travel agencies and travel websites. Tickets sold directly by the airlines are excluded, as are frequent flyer tickets generally. Starting in January 2008, the export air passenger fares indexes represent changes in the average revenue per passenger received by U.S. carriers from foreign residents and are calculated from data collected directly from airlines. These data include frequent flyer tickets and those sold by consolidators. Taxes and fees are included in the import air passenger fares indexes and excluded from the export air passenger fares indexes. The air freight indexes are calculated from data collected directly from airlines. These data exclude mail and passenger baggage. The scope of the service being priced is the movement of freight from airport to airport only, and does not include any ground transportation or port service. The air freight indexes are presented using two definitions: balance of payments (which represent transactions between U.S. and foreign residents) and international (which represent transactions inbound to and outbound from the U.S.). Fact sheets specifying detailed information for each services industry are available at www.bls.gov/mxp under "MXP Publications."

Import Indexes by Locality of Origin - Prices used in these indexes are a subset of the data collected for the import price indexes. Beginning with January 2002, the indexes are defined by locality of origin using a nomenclature based upon the North American Industry Classification System (NAICS). Nonmanufactured goods are defined as NAICS 11 and 21, and manufactured goods are defined as NAICS 31-33.

Revision Policy - To reflect the availability of late reports and corrections by respondents, monthly data may be revised in each of the 3 months after original publication. After 3 months, no further data revisions take place. For example, data first published in the January release will be subject to revision in the releases for February, March, and April.

Uses of the Data - The primary use of the indexes is to deflate trade statistics, notably the foreign trade sector of the National Income and Product Accounts (NIPA) constructed by the Department of Commerce. Other published indexes are useful for general market analysis. For trade in international services, balance of payments indexes are used for deflating NIPA, while international indexes are more appropriate for market analysis. Merchandise and services indexes also can be used to study U.S. competitiveness and to compute price elasticities, and the merchandise import indexes by country or region of origin are useful in terms of trade analysis.

Email Subscription - The U.S. import and export price indexes news release is available through an email subscription service at www.bls.gov/bls/list.htm.

Additional Information - More detailed data are available on the Import/Export Price Indexes home page at www.bls.gov/mxp. For import and export price indexes data requests, send an email to mxpinfo@bls.gov.

Information from this release will be made available to sensory impaired individuals upon request.
Voice phone: (202)-691-5200; Federal Relay Service: 1-(800)-877-8339.