



**Transmission of material in this release is embargoed until  
8:30 a.m. (EDT) Thursday, March 15, 2018**

USDL-18-0376

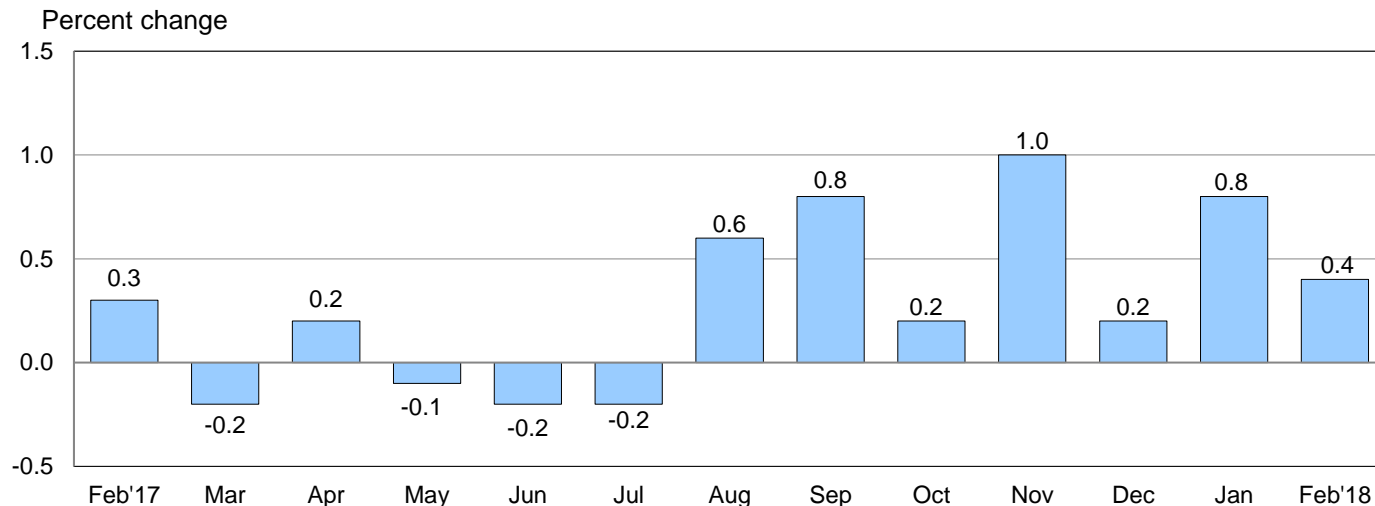
Technical information: (202) 691-7101 • [MXPinfo@bls.gov](mailto:MXPinfo@bls.gov) • [www.bls.gov/mxp](http://www.bls.gov/mxp)

Media contact: (202) 691-5902 • [PressOffice@bls.gov](mailto:PressOffice@bls.gov)

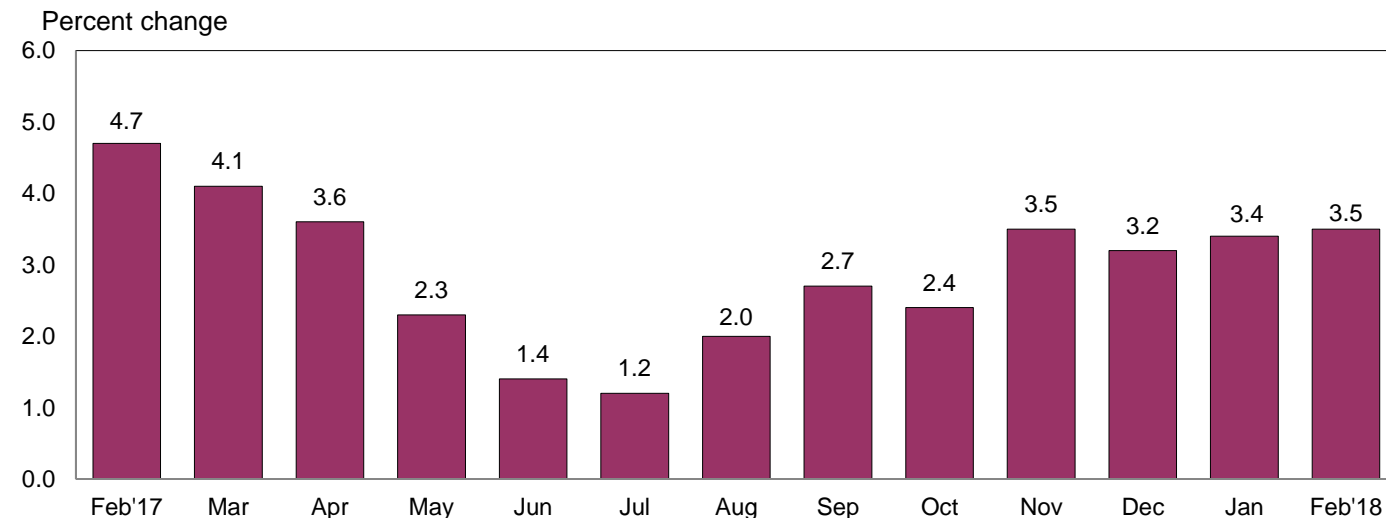
### U.S. IMPORT AND EXPORT PRICE INDEXES – FEBRUARY 2018

U.S. import prices increased 0.4 percent in February, the U.S. Bureau of Labor Statistics reported today, after rising 0.8 percent in January. In February, higher nonfuel prices more than offset declining prices for imported fuel. Prices for U.S. exports rose 0.2 percent in February following a 0.8-percent advance the previous month.

**Chart 1. One-month percent change in the Import Price Index: February 2017 – February 2018**



**Chart 2. 12-month percent change in the Import Price Index: February 2017 – February 2018**



**All Imports:** The price index for U.S. imports rose 0.4 percent in February, the seventh consecutive monthly increase, after advancing 0.8 percent in January. The last time the index declined on a monthly basis was a 0.2-percent drop in July 2017. Import prices advanced 3.5 percent for the 12-month period ended in February, matching the 12-month rise in November. Those were the largest annual increases since the index rose 3.6 percent for the 12-month period ended April 2017.

**Fuel Imports:** The price index for fuel imports declined 0.6 percent in February, the first monthly decline since July. Prior to February, the index for fuel imports rose 29.1 percent between July 2017 and January 2018. Both petroleum and natural gas prices contributed to the decline in overall fuel prices in February. Petroleum prices fell 0.5 percent and prices for natural gas decreased 3.0 percent. Despite the February decline, the price index for fuel imports rose 17.4 percent over the past 12 months. Petroleum prices increased 18.3 percent for the year ended in February and prices for natural gas advanced 17.9 percent over the same period.

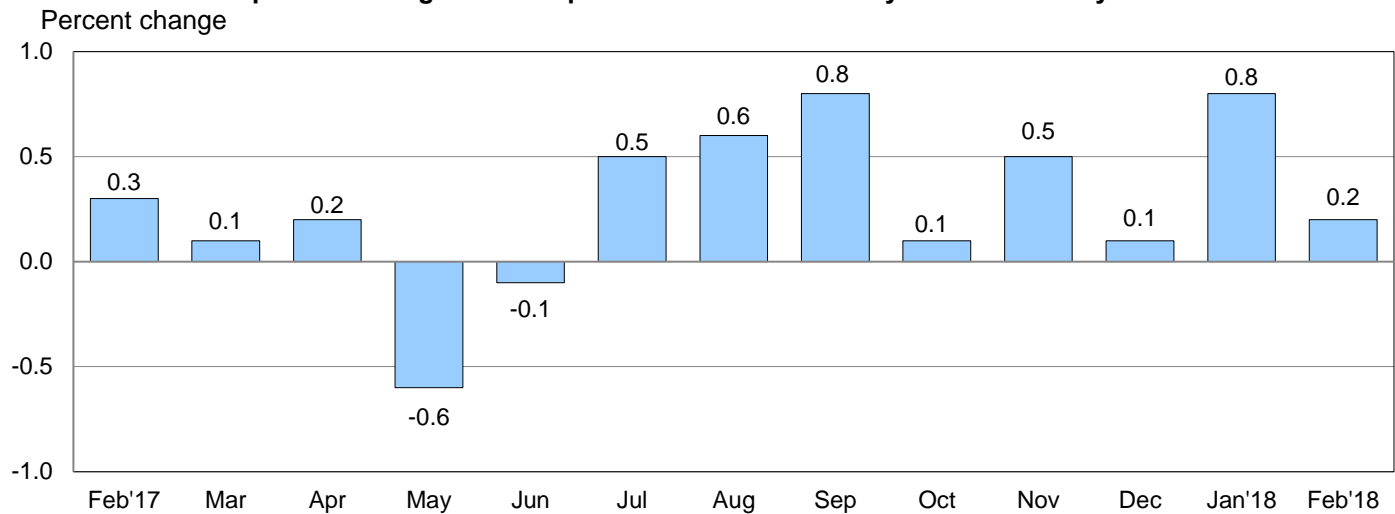
**All Imports Excluding Fuel:** The price index for nonfuel imports advanced 0.5 percent in February, after rising 0.5 percent the previous month. The last time the index increased by more than 0.5 percent was a 0.8-percent advance in April 2011. Prices for capital goods; consumer goods; nonfuel industrial supplies and materials; foods, feeds, and beverages; and automotive vehicles all contributed to the February advance. The price index for nonfuel imports increased 2.1 percent over the past 12 months, the largest over-the-year rise since the index advanced 2.4 percent for the year ended February 2012. The primary contributor to the 12-month advance in February was higher prices for nonfuel industrial supplies and materials.

**Table A. Percent change in Import and Export Price Indexes, selected categories**

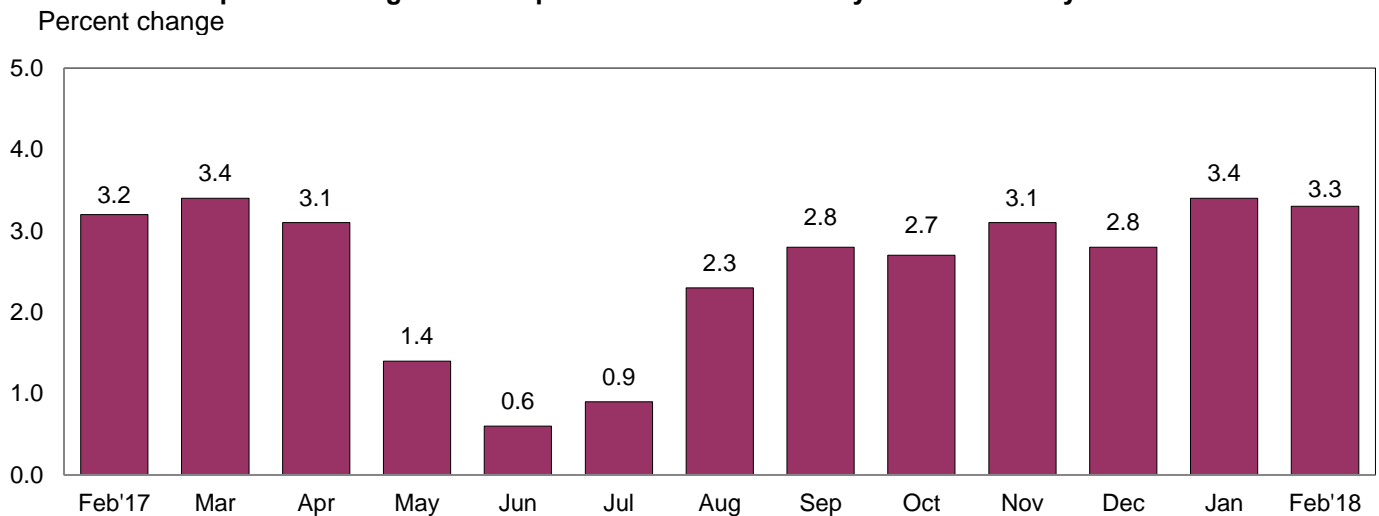
Month	IMPORTS			EXPORTS		
	All imports	Fuel imports	Nonfuel imports	All exports	Agricultural exports	Non-agricultural exports
<b>2017</b>						
February.....	0.3	0.3	0.3	0.3	1.4	0.3
March.....	-0.2	-3.0	0.2	0.1	1.1	0.0
April.....	0.2	-0.4	0.3	0.2	0.1	0.3
May.....	-0.1	-0.9	0.1	-0.6	-1.6	-0.4
June.....	-0.2	-3.6	0.1	-0.1	-1.4	0.0
July.....	-0.2	-1.0	-0.1	0.5	1.8	0.3
August.....	0.6	4.0	0.3	0.6	0.0	0.7
September.....	0.8	5.7	0.3	0.8	-0.7	0.9
October.....	0.2	0.3	0.1	0.1	2.0	-0.1
November.....	1.0	9.8	0.0	0.5	-0.7	0.7
December.....	0.2	3.3 <sup>r</sup>	-0.2 <sup>r</sup>	0.1	-0.3	0.1
<b>2018</b>						
January.....	0.8 <sup>r</sup>	3.2 <sup>r</sup>	0.5 <sup>r</sup>	0.8	0.1 <sup>r</sup>	0.8 <sup>r</sup>
February.....	0.4	-0.6	0.5	0.2	0.6	0.2
Feb. 2016 to 2017.....	4.7	68.9	0.6	3.2	2.1	3.3
Feb. 2017 to 2018.....	3.5	17.4	2.1	3.3	0.8	3.6

r Revised

**Chart 3. One-month percent change in the Export Price Index: February 2017 – February 2018**



**Chart 4. 12-month percent change in the Export Price Index: February 2017 – February 2018**



**All Exports:** U.S. export prices increased 0.2 percent in February after rising 0.8 percent in January. The last time the index declined on a monthly basis was a 0.1-percent decrease in June 2017. In February, higher prices for both nonagricultural and agricultural exports contributed to the increase in overall export prices. The price index for U.S. exports increased 3.3 percent over the past 12 months.

**Agricultural Exports:** The price index for agricultural exports rose 0.6 percent in February, after ticking up 0.1 percent the previous month. The February advance was the largest increase since the index rose 2.0 percent in October and was driven by higher prices for corn and soybeans, which increased 7.2 percent and 2.5 percent, respectively. Prices for agricultural exports rose 0.8 percent over the past year. Rising meat prices were the primary contributor to the advance in agricultural prices for the year ended in February.

**All Exports Excluding Agriculture:** Nonagricultural export prices advanced 0.2 percent in February following a 0.8-percent rise in January. The price indexes for nonagricultural industrial supplies and materials, consumer goods, capital goods, and automotive vehicles all contributed to the monthly increase. Over the past 12 months prices for nonagricultural exports advanced 3.6 percent, which matched the 12-month increase in January. Those were the largest 12-month rises since a 4.0-percent advance for the year ended December 2011.

## SELECTED FEBRUARY HIGHLIGHTS

### Import Prices

**Imports by Locality of Origin:** Prices for imports from China increased 0.2 percent in February, the first monthly advance since the index rose 0.3 percent in November. The price index for imports from China increased 0.3 percent for the 12-month period ended in February, the largest 12-month advance since the index rose 0.4 percent for the year ended June 2014. Import prices from Japan advanced 0.2 percent in February, after a 0.5-percent rise in January. Despite the increase, prices for imports from Japan declined 0.1 percent over the past 12 months. The last time the index advanced on a 12-month basis was an increase of 0.5 percent in July 2017. Import prices from Canada increased 0.2 percent in February and prices for imports from the European Union rose 0.7 percent. In contrast, the import price index from Mexico decreased 0.5 percent in February, the largest monthly drop since the index fell 1.2 percent in January 2017.

**Nonfuel Industrial Supplies and Materials:** Nonfuel industrial supplies and materials prices increased 0.9 percent in February following a 1.8-percent advance in January. The rise in February was driven by higher prices for chemicals and iron and steel mill products.

**Finished Goods:** Prices for each of the finished goods categories increased in February. Prices for capital goods advanced 0.6 percent, led by rising prices for computers, peripherals, and semiconductors. The price indexes for consumer goods and automotive vehicles also rose in February, increasing 0.5 percent and 0.2 percent, respectively.

**Foods, Feeds, and Beverages:** Import prices for foods, feeds, and beverages rose 1.1 percent in February after advancing 0.8 percent the previous month. The February increase was driven by higher prices for vegetables, which advanced 4.3 percent.

**Transportation Services:** Import air passenger fares rose 0.9 percent in February, after decreasing 3.2 percent in January. The February advance was led by a 1.9-percent rise in European fares and a 4.6-percent increase in Latin American/Caribbean fares, which more than offset lower Asian fares. Import air passenger fares rose 4.2 percent over the past year. Import air freight prices increased 1.6 percent in February and 11.4 percent over the past 12 months.

### Export Prices

**Nonagricultural Industrial Supplies and Materials:** The price index for nonagricultural industrial supplies and materials rose 0.3 percent in February. The advance was driven by a 1.5-percent increase in chemicals prices and a 2.0-percent rise in the price index for nonferrous metals.

**Finished Goods:** Prices for each of the major finished goods categories increased in February. Consumer goods prices advanced 0.3 percent, led by higher prices for medicinal, dental, and pharmaceutical preparatory materials. The price indexes for capital goods and automotive vehicles each ticked up 0.1 percent in February.

**Transportation Services:** Export air passenger fares decreased 8.9 percent in February, the largest decline since the index fell 11.6 percent in February 2017. The decreases were driven by lower Asian and Latin American/Caribbean fares which more than offset higher European fares. Despite the monthly decreases, export air passenger fares rose 1.2 percent for the year ended in February. Prices for export air freight increased 0.2 percent in February and 7.1 percent over the past year.

---

**Import and Export Price Index data for March are scheduled for release on Thursday, April 12, 2018 at 8:30 a.m. (EDT).**

**Table 1. U.S. import price indexes and percent changes for selected categories of goods: February 2017 to February 2018**

[2000=100, unless otherwise noted]

Description	End Use	Relative importance Jan. 2018 <sup>1</sup>	Index		Percent change				
			Jan. 2018	Feb. 2018	Annual	Monthly			
					Feb. 2017 to Feb. 2018	Oct. 2017 to Nov. 2017	Nov. 2017 to Dec. 2017	Dec. 2017 to Jan. 2018	Jan. 2018 to Feb. 2018
<b>All commodities</b> .....		100.000	126.5	127.0	3.5	1.0	0.2	0.8	0.4
<b>All imports excluding food and fuels (Dec. 2010=100)</b> .....		82.891	99.9	100.4	1.9	0.1	-0.1	0.4	0.5
<b>All imports excluding petroleum</b> .....		89.832	113.2	113.8	2.1	0.2	-0.1	0.5	0.5
<b>All imports excluding fuels (Dec. 2001=100)</b> .....		89.016	117.2	117.8	2.1	0.0	-0.2	0.5	0.5
<b>Foods, feeds, &amp; beverages</b> .....	0	6.125	182.4	184.4	3.5	-1.0	-0.9	0.8	1.1
Agricultural foods, feeds & beverages, excluding distilled beverages.....	00	4.825	200.6	203.0	4.5	-1.1	-1.2	0.8	1.2
Nonagricultural foods (fish, distilled beverages).....	01	1.300	141.0	142.2	-0.2	-0.7	0.0	0.8	0.9
<b>Industrial supplies &amp; materials</b> .....	1	25.196	190.2	190.7	12.2	4.4	1.3	2.4	0.3
Industrial supplies & materials excluding petroleum.....		15.110	157.0	158.1	8.4	1.4	0.3	2.1	0.7
Industrial supplies & materials excluding fuels (Dec. 2001=100).....		14.200	176.8	178.4	8.6	0.9	-0.3	1.8	0.9
Industrial supplies & materials, durable....		9.027	168.1	169.6	9.7	0.7	-0.8	2.3	0.9
Industrial supplies & materials nondurable excluding petroleum.....		6.000	143.0	143.6	6.6	2.5	2.0	1.9	0.4
Fuels & lubricants.....	10	10.984	212.7	211.5	17.4	9.8	3.3	3.2	-0.6
Petroleum & petroleum products.....	100	10.168	230.1	229.0	18.3	9.5	2.8	3.0	-0.5
Crude.....	10000	7.288	241.3	237.7	20.0	9.4	3.2	4.3	-1.5
Fuels, n.e.s.-coals & gas.....	101	0.632	124.3	120.8	7.1	19.4	16.0	8.9	-2.8
Gas-natural.....	10110	0.490	112.5	109.1	17.9	25.7	20.0	13.4	-3.0
Paper & paper base stocks.....	11	0.546	111.3	112.6	7.1	0.6	0.5	1.5	1.2
Materials associated with nondurable supplies & materials.....	12	4.703	160.7	162.1	6.6	1.1	0.7	1.0	0.9
Selected building materials.....	13	1.607	150.1	152.7	8.9	0.3	-1.0	-0.7	1.7
Unfinished metals related to durable goods.....	14	3.904	234.4	236.6	13.5	1.5	-1.8	4.9	0.9
Finished metals related to durable goods.....	15	1.801	160.1	161.8	11.0	0.4	0.3	1.6	1.1
Nonmetals related to durable goods.....	16	1.651	110.6	110.5	1.7	0.0	0.1	0.2	-0.1
<b>Capital goods</b> .....	2	26.736	89.3	89.8	1.2	-0.1	0.0	0.0	0.6
Electric generating equipment.....	20	3.227	117.0	117.7	1.2	0.2	-0.2	0.0	0.6
Nonelectrical machinery.....	21	21.257	81.9	82.2	1.5	-0.1	0.0	0.1	0.4
Transportation equipment excluding motor vehicles (Dec. 2001=100).....	22	2.252	135.4	137.4	0.5	0.1	0.1	0.3	1.5
<b>Automotive vehicles, parts &amp; engines</b> .....	3	15.886	110.7	110.9	0.7	-0.1	0.0	0.5	0.2
<b>Consumer goods, excluding automobiles</b> .....	4	26.057	106.8	107.3	0.2	0.0	-0.1	0.1	0.5
Nondurables, manufactured.....	40	12.724	121.4	121.9	0.4	0.1	0.0	0.0	0.4
Durables, manufactured.....	41	12.029	92.9	93.1	-0.2	0.0	-0.2	0.1	0.2
Nonmanufactured consumer goods.....	42	1.304	115.7	118.9	0.4	-0.3	0.2	0.8	2.8

<sup>1</sup> Relative importance figures are based on 2016 trade values.

NOTES: Data may be revised in each of the 3 months after original publication.

Dash = Not available

**Table 2. U.S. export price indexes and percent changes for selected categories of goods: February 2017 to February 2018**

[2000=100, unless otherwise noted]

Description	End Use	Relative importance Jan. 2018 <sup>1</sup>	Index		Percent change				
			Jan. 2018	Feb. 2018	Annual	Monthly			
					Feb. 2017 to Feb. 2018	Oct. 2017 to Nov. 2017	Nov. 2017 to Dec. 2017	Dec. 2017 to Jan. 2018	Jan. 2018 to Feb. 2018
<b>All commodities.....</b>		100.000	125.7	126.0	3.3	0.5	0.1	0.8	0.2
<b>Agricultural commodities.....</b>		9.892	178.6	179.7	0.8	-0.7	-0.3	0.1	0.6
<b>All exports excluding food and fuels (Dec. 2010=100).....</b>		80.998	100.6	101.0	2.4	0.2	0.1	0.5	0.4
<b>Nonagricultural commodities.....</b>		90.108	121.6	121.9	3.6	0.7	0.1	0.8	0.2
<b>Foods, feeds, &amp; beverages.....</b>	0	9.250	180.1	181.3	0.8	-1.0	-0.5	-0.2	0.7
Agricultural foods, feeds & beverages, excluding distilled beverages.....	00	8.629	178.8	179.7	0.0	-1.0	-0.6	-0.3	0.5
Nonagricultural foods (fish, distilled beverages).....	01	0.621	207.9	212.5	11.0	-0.6	0.4	1.5	2.2
<b>Industrial supplies &amp; materials.....</b>	1	31.369	157.8	158.2	7.5	2.0	0.1	2.0	0.3
Industrial supplies & materials, durable....		10.417	164.5	165.9	5.4	0.2	-0.1	1.5	0.9
Industrial supplies & materials, nondurable.....		20.952	155.0	154.9	8.7	3.1	0.0	2.4	-0.1
Agricultural industrial supplies & materials.....	10	1.263	183.3	185.5	5.8	1.0	1.2	2.4	1.2
<b>Nonagricultural industrial supplies &amp; materials.....</b>		30.106	157.0	157.4	7.7	2.1	-0.1	2.0	0.3
Fuels & lubricants.....	11	9.751	192.4	189.8	14.6	5.1	-0.4	4.2	-1.4
Nonagricultural supplies & materials excluding fuels & building materials.....	12	19.347	157.1	158.7	4.9	1.0	0.1	1.1	1.0
Selected building materials.....	13	1.008	121.3	122.1	4.2	0.2	-0.2	-1.9	0.7
<b>Capital goods.....</b>	2	36.601	108.9	109.0	1.6	0.0	0.1	0.3	0.1
Electrical generating equipment.....	20	3.879	115.4	114.9	2.6	0.2	0.3	-0.5	-0.4
Nonelectrical machinery.....	21	23.655	94.5	94.6	1.1	-0.1	0.0	0.3	0.1
Transportation equipment excluding motor vehicles (Dec. 2001=100).....	22	9.067	173.1	173.6	2.5	0.1	0.3	0.5	0.3
<b>Automotive vehicles, parts &amp; engines.....</b>	3	10.140	113.7	113.8	0.6	-0.1	-0.1	0.4	0.1
<b>Consumer goods, excluding automotives.....</b>	4	12.640	110.0	110.3	2.4	0.1	0.2	0.5	0.3
Nondurables, manufactured.....	40	6.166	107.0	107.3	3.8	0.1	0.4	1.1	0.3
Durables, manufactured.....	41	5.030	107.7	107.8	1.0	0.0	0.1	-0.1	0.1

<sup>1</sup> Relative importance figures are based on 2016 trade values.

NOTES: Data may be revised in each of the 3 months after original publication.

Dash = Not available

**Table 3. U.S. import price indexes and percent changes for selected industries: February 2017 to February 2018**

[December 2005=100, unless otherwise noted]

Description	NAICS	Relative importance Jan. 2018 <sup>1</sup>	Index		Percent change				
			Jan. 2018	Feb. 2018	Annual	Monthly			
					Feb. 2017 to Feb. 2018	Oct. 2017 to Nov. 2017	Nov. 2017 to Dec. 2017	Dec. 2017 to Jan. 2018	Jan. 2018 to Feb. 2018
<b>Nonmanufacturing.....</b>		10.109	115.3	114.8	16.1	6.7	2.4	4.2	-0.4
<b>Agriculture, forestry, fishing and hunting.....</b>	11	2.076	188.7	195.4	5.8	-2.4	-2.2	2.3	3.6
Crop production.....	111	1.683	202.8	210.9	7.9	-3.3	-3.0	2.1	4.0
Animal production (Dec. 2014=100).....	112	0.194	78.0	79.7	-0.6	3.1	0.7	2.6	2.2
<b>Mining.....</b>	21	8.033	107.5	105.9	19.1	9.5	3.7	4.7	-1.5
Oil and gas extraction.....	211	7.810	107.9	106.1	19.6	9.9	3.9	5.0	-1.7
<b>Manufacturing.....</b>		89.605	111.4	112.1	2.4	0.4	0.0	0.4	0.6
<b>Manufacturing, part 1.....</b>	31	11.347	124.7	125.1	1.1	-0.1	0.0	0.2	0.3
Food manufacturing.....	311	3.420	156.7	157.8	2.4	-0.2	-0.1	0.3	0.7
Beverage and tobacco product manufacturing.....	312	1.092	120.2	120.2	1.8	-0.1	0.0	0.7	0.0
Textile mills (Dec. 2011=100).....	313	0.384	100.0	100.4	2.4	0.1	0.6	-0.2	0.4
Textile product mills.....	314	0.921	109.2	109.3	1.1	-0.2	0.0	0.0	0.1
Apparel manufacturing.....	315	3.856	111.2	111.4	0.2	-0.1	0.1	0.3	0.2
Leather and allied product manufacturing.....	316	1.673	122.9	122.9	-0.1	0.1	0.1	0.0	0.0
<b>Manufacturing, part 2.....</b>	32	18.009	124.3	125.6	5.0	1.7	0.4	0.1	1.0
Wood product manufacturing.....	321	0.988	132.2	135.6	12.8	0.5	-1.5	-1.2	2.6
Paper manufacturing.....	322	1.005	106.6	107.3	2.9	0.1	0.2	0.4	0.7
Printing and related support activities (Dec. 2016=100).....	323	0.209	100.3	100.4	0.3	-0.1	0.0	1.4	0.1
Petroleum and coal products manufacturing.....	324	2.587	94.0	96.8	15.7	10.7	1.5	-0.7	3.0
Chemical manufacturing.....	325	10.051	138.1	139.1	3.4	0.6	0.4	0.4	0.7
Plastics and rubber products manufacturing.....	326	2.181	118.2	118.9	1.8	-0.1	0.1	-0.1	0.6
Nonmetallic mineral product manufacturing.....	327	0.987	129.6	129.7	0.8	0.1	0.2	0.4	0.1
<b>Manufacturing, part 3.....</b>	33	60.248	104.6	105.1	1.7	0.1	-0.2	0.5	0.5
Primary metal manufacturing.....	331	4.418	154.3	156.5	13.0	1.3	-1.6	4.0	1.4
Fabricated metal product manufacturing.....	332	3.090	126.6	127.4	5.1	0.1	0.1	0.4	0.6
Machinery manufacturing.....	333	6.765	118.0	118.6	2.2	-0.1	0.1	0.2	0.5
Computer and electronic product manufacturing.....	334	17.095	75.5	75.8	0.0	0.0	-0.1	-0.1	0.4
Electrical equipment, appliance, and component manufacturing.....	335	4.889	115.1	115.7	1.2	0.3	-0.2	-0.1	0.5
Transportation equipment manufacturing.....	336	16.890	109.9	110.2	0.7	0.0	0.0	0.5	0.3
Furniture and related product manufacturing.....	337	1.768	116.1	116.1	0.8	0.0	0.0	0.3	0.0
Miscellaneous manufacturing.....	339	5.334	118.4	118.4	0.8	0.0	-0.1	0.8	0.0

<sup>1</sup> Relative importance figures are based on 2016 trade values.

NOTES: Data may be revised in each of the 3 months after original publication.

Dash = Not available

**Table 4. U.S. export price indexes and percent changes for selected industries: February 2017 to February 2018**

[December 2005=100, unless otherwise noted]

Description	NAICS	Relative importance Jan. 2018 <sup>1</sup>	Index		Percent change				
			Jan. 2018	Feb. 2018	Annual	Monthly			
					Feb. 2017 to Feb. 2018	Oct. 2017 to Nov. 2017	Nov. 2017 to Dec. 2017	Dec. 2017 to Jan. 2018	Jan. 2018 to Feb. 2018
<b>Nonmanufacturing.....</b>		8.563	139.9	137.1	2.7	-0.1	0.4	1.2	-2.0
<b>Agriculture, forestry, fishing and hunting.....</b>	11	5.148	155.0	155.6	-0.7	-1.5	-0.7	1.0	0.4
Crop production.....	111	4.743	160.8	161.3	-1.3	-1.7	-0.8	1.1	0.3
<b>Mining.....</b>	21	3.415	93.0	87.7	7.9	2.4	2.1	1.5	-5.7
Mining (except oil and gas).....	212	1.129	110.4	112.5	5.8	0.8	0.3	1.8	1.9
<b>Manufacturing.....</b>		89.818	115.2	115.8	3.5	0.4	0.0	0.8	0.5
<b>Manufacturing, part 1.....</b>	31	6.937	138.9	140.1	3.0	-0.1	0.3	-0.4	0.9
Food manufacturing.....	311	4.747	157.0	158.4	3.1	-0.2	0.3	-0.8	0.9
Beverage and tobacco product manufacturing.....	312	0.678	116.8	120.0	10.1	0.3	-0.2	1.4	2.7
Textile mills (Dec. 2016=100).....	313	0.629	101.5	102.4	0.9	0.0	0.5	-0.2	0.9
Leather and allied product manufacturing (Dec. 2016=100).....	316	0.274	98.3	98.8	-1.5	0.7	1.0	1.0	0.5
<b>Manufacturing, part 2.....</b>	32	25.097	114.6	115.8	8.0	1.8	-0.3	2.0	1.0
Wood product manufacturing (Dec. 2017=100).....	321	0.527	100.0	102.2	-	-	-	0.0	2.2
Paper manufacturing.....	322	1.649	125.2	125.2	6.6	0.7	-0.3	0.7	0.0
Petroleum and coal products manufacturing.....	324	6.401	112.0	113.2	19.7	6.3	-1.7	6.0	1.1
Chemical manufacturing.....	325	13.237	117.5	119.0	5.2	0.5	0.4	0.9	1.3
Plastics and rubber products manufacturing.....	326	2.225	114.0	114.2	-0.3	-0.3	-0.1	0.0	0.2
Nonmetallic mineral product manufacturing.....	327	0.821	114.2	115.1	2.2	-0.2	-0.1	-0.3	0.8
<b>Manufacturing, part 3.....</b>	33	57.784	113.1	113.3	1.7	-0.1	0.1	0.4	0.2
Primary metal manufacturing.....	331	3.903	142.9	144.4	6.7	0.6	-0.2	2.3	1.0
Fabricated metal product manufacturing... ..	332	3.023	138.3	138.4	0.7	-0.2	-0.1	0.5	0.1
Machinery manufacturing.....	333	8.947	125.8	126.2	0.8	-0.2	0.2	0.2	0.3
Computer and electronic product manufacturing.....	334	14.188	83.6	83.6	1.3	-0.1	0.0	0.4	0.0
Electrical equipment, appliance, and component manufacturing.....	335	3.807	115.0	114.8	2.2	0.0	0.0	-0.6	-0.2
Transportation equipment manufacturing... ..	336	18.126	125.5	125.8	1.5	0.0	0.1	0.5	0.2
Furniture and related product manufacturing (Dec. 2011=100).....	337	0.401	118.3	118.7	0.9	0.2	0.2	0.2	0.3
Miscellaneous manufacturing.....	339	5.389	119.7	120.2	1.5	0.2	0.2	0.0	0.4

<sup>1</sup> Relative importance figures are based on 2016 trade values.

NOTES: Data may be revised in each of the 3 months after original publication.

Dash = Not available



**Table 5. U.S. import price indexes and percent changes for selected categories of goods: February 2017 to February 2018**

[2000=100, unless otherwise noted]

Description	Harmonized system	Relative importance Jan. 2018 <sup>1</sup>	Index		Percent change				
			Jan. 2018	Feb. 2018	Annual	Monthly			
					Feb. 2017 to Feb. 2018	Oct. 2017 to Nov. 2017	Nov. 2017 to Dec. 2017	Dec. 2017 to Jan. 2018	Jan. 2018 to Feb. 2018
<b>Live animals; animal products.....</b>	I	1.373	193.5	197.6	3.0	0.0	-0.1	1.3	2.1
Meat and edible meat offal.....	02	0.374	246.9	252.4	6.6	-1.1	0.4	0.4	2.2
Fish and crustaceans, molluscs and other aquatic invertebrates.....	03	0.709	140.9	143.3	-1.7	-1.3	0.2	1.7	1.7
<b>Vegetable products.....</b>	II	2.067	224.4	233.0	7.5	-2.6	-2.8	1.7	3.8
Edible vegetables, roots, and tubers.....	07	0.494	506.4	539.7	28.6	16.9	-4.9	0.3	6.6
Edible fruit and nuts; peel of citrus fruit or melons.....	08	0.858	130.9	133.0	6.9	-11.9	-3.7	1.9	1.6
Coffee, tea, mate and spices.....	09	0.343	218.3	216.5	-8.8	-1.2	-2.2	0.5	-0.8
<b>Animal or vegetable fats and oils (Dec. 2009=100).....</b>	III	0.302	114.4	112.9	-5.8	0.2	-0.9	-1.6	-1.3
<b>Prepared foodstuffs, beverages, and tobacco.....</b>	IV	2.753	162.6	162.7	2.1	-0.1	0.1	0.4	0.1
Sugars and sugar confectionary (Dec. 2012=100).....	17	0.202	90.5	90.5	5.1	-0.7	-0.1	4.6	0.0
Cocoa and cocoa preparations (Dec. 2009=100).....	18	0.197	94.4	95.2	-2.9	0.6	-1.3	0.0	0.8
Preparations of vegetables, fruit, nuts, or other parts of plants.....	20	0.364	168.3	167.5	5.7	0.1	-0.6	-1.2	-0.5
Miscellaneous edible preparations (Dec. 2017=100).....	21	0.201	99.5	100.3	—	—	—	-0.5	0.8
Beverages, spirits, and vinegar.....	22	1.034	130.2	130.3	2.0	-0.1	0.1	0.8	0.1
<b>Mineral products.....</b>	V	10.756	211.8	210.8	17.8	9.6	3.1	3.3	-0.5
Mineral fuels, oils and residuals, bituminous substances and mineral waxes.....	27	10.511	209.7	208.6	17.9	10.0	3.2	3.3	-0.5
<b>Products of the chemical or allied industries.....</b>	VI	9.415	155.7	156.7	3.4	0.7	0.8	0.8	0.6
Inorganic chemicals.....	28	0.617	311.8	317.3	18.9	3.7	7.0	3.3	1.8
Organic chemicals.....	29	2.384	129.9	130.2	6.1	1.1	1.4	0.8	0.2
Pharmaceutical products.....	30	4.397	148.9	150.5	0.5	0.2	0.0	0.5	1.1
Fertilizers (Dec. 2009=100).....	31	0.263	81.4	80.3	1.3	3.1	-1.0	1.5	-1.4
Tanning extracts; dye, pigments, varnish, paints & putty (Dec. 2011=100).....	32	0.183	107.0	107.3	5.4	-0.5	0.9	0.7	0.3
Essential oils and resinoids (Dec. 2016=100).....	33	0.578	102.5	103.2	3.0	0.1	-0.3	0.2	0.7
Miscellaneous chemical products.....	38	0.641	107.1	106.3	2.8	0.3	0.1	1.2	-0.7
<b>Plastics and articles thereof; rubber and articles thereof.....</b>	VII	3.394	139.9	140.9	1.5	-0.1	-0.1	-0.3	0.7
Plastics and articles thereof.....	39	2.231	142.7	143.5	2.9	0.2	-0.3	-0.1	0.6
Rubber and articles thereof.....	40	1.163	136.4	137.7	-1.0	-0.7	0.4	-0.7	1.0
<b>Raw hides, skins, leather, furskins, travel goods, etc.....</b>	VIII	0.633	124.2	124.4	0.9	0.1	-0.1	0.1	0.2
Articles of leather; travel goods, bags, etc. of various materials.....	42	0.597	129.6	129.7	0.9	0.0	0.0	0.1	0.1
<b>Wood, wood charcoal, cork, straw, basketware and wickerwork.....</b>	IX	1.017	160.6	164.9	12.9	0.4	-1.6	-1.2	2.7
Wood and articles of wood; wood charcoal (Dec. 2014=100).....	44	0.993	110.8	113.8	13.2	0.4	-1.6	-1.2	2.7
<b>Woodpulp, recovered paper, and paper products.....</b>	X	1.060	112.4	113.4	3.4	0.3	0.2	0.9	0.9
Paper and paperboard; articles of paper pulp, paper or paperboard.....	48	0.696	103.8	105.3	1.5	0.0	0.0	0.7	1.4

See footnotes at end of table.

**Table 5. U.S. import price indexes and percent changes for selected categories of goods: February 2017 to February 2018 — Continued**  
 [2000=100, unless otherwise noted]

Description	Harmoni- zied system	Relative importance Jan. 2018 <sup>1</sup>	Index		Percent change				
			Jan. 2018	Feb. 2018	Annual	Monthly			
					Feb. 2017 to Feb. 2018	Oct. 2017 to Nov. 2017	Nov. 2017 to Dec. 2017	Dec. 2017 to Jan. 2018	Jan. 2018 to Feb. 2018
Printed matter (Dec. 2015=100).....	49	0.206	105.9	106.1	0.1	0.0	0.0	1.0	0.2
<b>Textile and textile articles.....</b>	XI	5.002	113.7	114.0	0.8	-0.2	0.2	0.3	0.3
Articles of apparel and clothing accessories, knitted or crocheted.....	61	2.011	103.9	104.0	0.2	-0.1	0.0	0.4	0.1
Articles of apparel and clothing accessories, not knitted or crocheted.....	62	1.698	119.1	119.2	0.1	-0.3	0.2	0.4	0.1
Made-up or worn textile articles.....	63	0.641	104.0	104.0	0.7	-0.1	0.3	-0.1	0.0
<b>Headgear, umbrellas, artificial flowers, etc.....</b>	XII	1.384	122.0	121.8	-0.5	0.1	0.2	-0.1	-0.2
Footwear and parts of such articles.....	64	1.159	121.0	120.9	-0.5	0.1	0.1	-0.1	-0.1
<b>Stone, plaster, cement, asbestos, ceramics, glass etc.....</b>	XIII	0.928	131.6	131.3	0.8	-0.1	0.1	0.5	-0.2
Articles of stone, plaster, cement, asbestos, or mica (Dec. 2015=100).....	68	0.329	97.9	98.3	1.8	0.0	0.4	0.3	0.4
Ceramic products.....	69	0.261	136.7	134.9	-1.6	0.1	0.1	0.0	-1.3
Glass and glassware.....	70	0.338	132.0	132.0	1.9	-0.2	-0.2	0.9	0.0
<b>Pearls, stones, precious metals, imitation jewelry, and coins.....</b>	XIV	3.107	175.1	175.0	4.4	0.8	-0.6	2.4	-0.1
<b>Base metals and articles of base metals. ...</b>	XV	5.531	177.2	179.3	9.6	0.6	-0.9	2.0	1.2
Iron and steel.....	72	1.247	209.6	214.2	12.6	0.1	-0.6	3.2	2.2
Articles of iron or steel.....	73	1.598	150.8	152.6	10.3	0.1	0.1	1.1	1.2
Copper and articles thereof.....	74	0.426	306.2	303.8	11.1	2.8	-2.3	4.4	-0.8
Aluminum and articles thereof.....	76	0.939	137.4	138.0	10.3	0.9	-1.4	1.3	0.4
Tools, implements, cutlery, spoons and forks, of base metal; parts thereof.....	82	0.417	122.1	122.5	-0.2	0.0	-0.1	0.2	0.3
Miscellaneous articles of base metal.....	83	0.516	136.8	137.2	1.4	0.0	0.1	-0.8	0.3
<b>Machinery, electrical equipment, TV image and sound recorders, parts, etc.....</b>	XVI	28.924	80.4	80.9	0.6	-0.1	0.0	-0.2	0.6
Machinery and mechanical appliances; parts thereof.....	84	14.129	86.5	87.1	1.9	0.0	0.0	-0.1	0.7
Electrical machinery and equip, sound and TV recorders & reproducers, parts.....	85	14.796	74.7	75.1	-0.5	-0.1	-0.1	-0.3	0.5
<b>Vehicles, aircraft, vessels and associated transport equipment.....</b>	XVII	14.084	114.7	114.8	0.8	0.0	0.0	0.7	0.1
Motor vehicles and their parts.....	87	12.870	113.6	113.8	1.1	0.0	0.0	0.7	0.2
Aircraft, spacecraft, and parts thereof (Dec. 2002=100).....	88	1.121	116.4	116.4	-2.0	0.2	0.2	0.3	0.0
<b>Optical, photo, measuring, medical &amp; musical instruments; &amp; timepieces.....</b>	XVIII	3.892	103.3	103.4	2.1	-0.3	-0.1	1.7	0.1
Optical, photographic, measuring and medical instruments.....	90	3.605	99.9	100.1	2.1	-0.4	-0.1	1.8	0.2
Clocks and watches and parts thereof.....	91	0.229	142.5	142.4	0.4	0.0	0.3	-1.3	-0.1
<b>Miscellaneous manufactured articles.....</b>	XX	4.289	111.4	111.5	0.2	0.2	0.0	0.0	0.1
Furniture & stuffed furnishings; lamps & lighting fittings, nesoi; prefab bldgs.....	94	2.704	117.3	117.4	0.9	0.3	-0.1	0.2	0.1
Toys, games and sports equipment; parts and accessories thereof.....	95	1.302	101.7	101.7	-1.0	0.1	0.2	0.1	0.0
Miscellaneous manufactured articles.....	96	0.283	128.6	128.6	-0.8	0.0	-0.1	-0.8	0.0

<sup>1</sup> Relative importance figures are based on 2016 trade values.

NOTES: Data may be revised in each of the 3 months after original publication.

Dash = Not available

**Table 6. U.S. export price indexes and percent changes for selected categories of goods: February 2017 to February 2018**

[2000=100, unless otherwise noted]

Description	Harmoni- zied system	Relative importance Jan. 2018 <sup>1</sup>	Index		Percent change				
			Jan. 2018	Feb. 2018	Annual	Monthly			
					Feb. 2017 to Feb. 2018	Oct. 2017 to Nov. 2017	Nov. 2017 to Dec. 2017	Dec. 2017 to Jan. 2018	Jan. 2018 to Feb. 2018
<b>Live animals; animal products.....</b>	I	1.943	207.3	208.9	6.3	-1.0	0.5	-0.3	0.8
Meat & edible meat offal (Dec. 2006=100)...	02	1.193	167.0	168.5	12.1	-1.3	1.2	0.2	0.9
Fish and crustaceans, mollusks and aquatic invertebrates (Dec. 2016=100).....	03	0.409	114.4	117.1	12.1	-0.6	0.5	1.4	2.4
Dairy products, eggs and honey (Dec. 2017=100).....	04	0.262	94.5	94.4	-	-	-	-5.5	-0.1
<b>Vegetable products.....</b>	II	4.761	195.1	195.1	-2.8	-2.2	-1.4	1.1	0.0
Edible fruit and nuts; peel of citrus fruit or melons.....	08	0.924	147.3	146.6	4.2	2.6	-1.5	0.8	-0.5
Cereals.....	10	1.370	183.5	192.0	7.7	0.7	0.4	1.5	4.6
Oilseeds and misc. grains, seeds, fruits, plants, straw and fodder.....	12	1.899	199.3	203.5	-1.7	0.3	2.2	-2.5	2.1
<b>Prepared foodstuffs, beverages, and tobacco.....</b>	IV	3.074	150.0	152.1	3.9	-0.2	-0.1	0.6	1.4
Preparations of vegetables, fruit, nuts or other parts of plants (Dec. 2009=100)....	20	0.350	117.7	117.6	0.9	0.0	0.0	0.4	-0.1
Miscellaneous edible preparations (Dec. 2017=100).....	21	0.601	101.9	103.2	-	-	-	1.9	1.3
Beverages, spirits, and vinegar (Dec. 2008=100).....	22	0.519	105.5	108.0	-1.4	-2.4	-2.7	-0.8	2.4
Residues and waste from the food industries; prepared animal feed.....	23	0.699	205.6	211.9	6.4	2.1	1.7	1.3	3.1
<b>Mineral products.....</b>	V	10.146	231.7	228.4	16.6	5.1	-0.1	4.3	-1.4
Ores, slag and ash (Dec. 2012=100).....	26	0.556	109.0	113.4	21.3	2.1	0.4	3.3	4.0
Mineral fuels, oils and residuals, bituminous substances and mineral waxes.....	27	9.413	222.3	218.4	16.7	5.4	-0.2	4.4	-1.8
<b>Products of the chemical or allied industries.....</b>	VI	10.796	137.7	139.8	4.2	0.2	0.7	0.9	1.5
Inorganic chemicals.....	28	0.753	167.7	168.5	-5.5	0.4	2.5	3.1	0.5
Organic chemicals.....	29	2.456	138.1	144.6	8.5	0.4	0.4	1.1	4.7
Pharmaceutical products.....	30	3.281	108.3	109.0	5.6	-0.5	0.5	2.7	0.6
Fertilizers (Dec. 2016=100).....	31	0.241	111.6	117.0	17.2	2.3	0.7	3.5	4.8
Tanning or dyeing extracts, dyes, paints varnish, putty, & inks (Dec. 2015=100)....	32	0.524	99.8	100.7	3.1	-0.1	-0.5	-1.6	0.9
Essential oils and resinoids; perfumery cosmetic or toilet preparations.....	33	0.815	130.2	130.4	-1.1	0.5	0.1	-2.0	0.2
Soap; lubricants; waxes, polishing or scouring products; candles, pastes.....	34	0.527	126.6	126.5	8.3	0.6	-0.2	-0.1	-0.1
Miscellaneous chemical products.....	38	1.805	150.6	150.7	3.4	0.7	2.0	0.4	0.1
<b>Plastics and articles thereof; rubber and articles thereof.....</b>	VII	5.072	139.8	140.3	2.0	0.4	-0.7	0.3	0.4
Plastics and articles thereof.....	39	4.211	136.6	136.8	3.8	0.8	-0.8	0.5	0.1
Rubber and articles thereof.....	40	0.860	152.4	153.7	-5.8	-1.5	-0.4	-0.5	0.9
<b>Wood, wood charcoal, cork, straw, baskets and wickerwork (Dec. 2014=100).....</b>	IX	0.670	103.0	104.7	13.1	0.8	-0.1	-1.3	1.7
<b>Woodpulp, recovered paper, and paper products.....</b>	X	2.032	128.3	127.0	0.8	6.0	-0.2	0.1	-1.0
Woodpulp and recovered paper.....	47	0.632	136.1	130.7	-6.4	19.9	0.5	0.0	-4.0
Paper and paperboard; articles of paper pulp, paper or paperboard.....	48	1.070	124.0	124.5	4.4	0.0	-0.6	0.2	0.4
Printed material (Dec. 2014=100).....	49	0.329	104.5	104.5	3.9	3.5	0.0	-0.6	0.0
<b>Textile and textile articles.....</b>	XI	1.665	122.1	122.3	0.5	0.3	0.5	1.2	0.2

See footnotes at end of table.

**Table 6. U.S. export price indexes and percent changes for selected categories of goods: February 2017 to February 2018 — Continued**  
 [2000=100, unless otherwise noted]

Description	Harmoni- zied system	Relative importance Jan. 2018 <sup>1</sup>	Index		Percent change				
			Jan. 2018	Feb. 2018	Annual	Monthly			
					Feb. 2017 to Feb. 2018	Oct. 2017 to Nov. 2017	Nov. 2017 to Dec. 2017	Dec. 2017 to Jan. 2018	Jan. 2018 to Feb. 2018
Cotton, including yarns and woven fabrics thereof.....	52	0.451	132.3	132.1	2.8	1.9	2.2	3.2	-0.2
<b>Stone, plaster, cement, asbestos, ceramics, glass etc.....</b>	XIII	0.806	123.2	123.4	0.9	-0.1	0.0	-0.2	0.2
Articles of stone, plaster, cement, asbestos, or mica (Dec. 2015=100).....	68	0.270	101.2	101.3	1.1	-0.1	0.0	-0.1	0.1
Glass and glassware.....	70	0.411	98.6	98.8	-0.5	-0.1	0.0	-0.3	0.2
<b>Pearls, stones, precious metals, imitation jewelry, and coins.....</b>	XIV	4.138	239.7	240.9	5.8	0.3	-0.2	2.0	0.5
<b>Base metals and articles of base metals. . .</b>	XV	4.909	159.0	159.5	5.8	-0.1	0.2	1.3	0.3
Iron and steel.....	72	1.053	167.7	164.4	5.9	-3.4	1.2	3.6	-2.0
Copper and articles thereof.....	74	0.581	203.2	204.8	21.0	2.6	0.8	3.0	0.8
Aluminum and articles thereof.....	76	0.959	118.2	121.7	11.1	2.7	-0.8	0.1	3.0
Tools, implements, cutlery, spoons and forks, of base metal (Dec. 2015=100). . . .	82	0.317	99.8	99.6	0.1	0.0	0.0	0.3	-0.2
Miscellaneous articles of base metal.....	83	0.339	149.3	149.3	1.1	0.0	-0.1	0.8	0.0
<b>Machinery, electrical equipment, TV image and sound recorders, parts, etc.....</b>	XVI	27.621	96.8	96.9	1.1	-0.1	0.2	0.0	0.1
Machinery and mechanical appliances; parts thereof.....	84	15.804	113.8	114.0	0.6	-0.2	-0.1	0.2	0.2
Electrical machinery and equipment and parts and accessories thereof.....	85	11.817	78.4	78.4	2.0	-0.1	0.6	-0.1	0.0
<b>Vehicles, aircraft, vessels and associated transport equipment.....</b>	XVII	14.313	134.1	134.5	1.7	0.0	0.2	0.5	0.3
Motor vehicles and their parts.....	87	8.325	115.7	115.9	0.7	-0.1	-0.1	0.5	0.2
<b>Optical, photo, measuring, medical &amp; musical instruments; &amp; timepieces.....</b>	XVIII	5.953	108.3	108.7	2.3	0.2	0.1	0.5	0.4
<b>Miscellaneous manufactured articles.....</b>	XX	1.409	112.4	112.2	-0.5	-0.1	-0.1	0.3	-0.2
Furniture; stuffed furnishings; lamps and lighting fittings nesoi;.....	94	0.819	128.4	128.9	0.4	-0.1	0.2	0.0	0.4
Toys, games and sports equipment; parts and accessories thereof.....	95	0.429	89.1	88.0	-1.7	0.0	-0.8	1.1	-1.2

<sup>1</sup> Relative importance figures are based on 2016 trade values.

NOTES: Data may be revised in each of the 3 months after original publication.

Dash = Not available

**Table 7. U.S. import price indexes and percent changes by locality of origin: February 2017 to February 2018**  
 [2000=100, unless otherwise noted]

Description	Relative importance Jan. 2018 <sup>1</sup>	Index		Percent change				
		Jan. 2018	Feb. 2018	Annual	Monthly			
				Feb. 2017 to Feb. 2018	Oct. 2017 to Nov. 2017	Nov. 2017 to Dec. 2017	Dec. 2017 to Jan. 2018	Jan. 2018 to Feb. 2018
<b>Industrialized Countries<sup>2</sup></b> .....	100.000	123.8	124.4	4.3	1.1	0.5	1.1	0.5
Nonmanufacturing.....	9.205	160.4	157.2	12.7	8.9	3.4	2.9	-2.0
Manufacturing.....	90.251	120.2	121.1	3.2	0.3	0.3	0.8	0.7
<b>Canada</b> .....	100.000	133.3	133.5	6.1	2.9	0.8	1.4	0.2
Nonmanufacturing.....	24.663	153.4	150.1	11.8	9.4	3.7	2.7	-2.2
Manufacturing.....	74.400	131.3	132.5	4.0	0.9	-0.2	1.0	0.9
<b>European Union<sup>3</sup></b> .....	100.000	135.5	136.4	3.3	0.2	0.3	0.7	0.7
Manufacturing.....	99.005	132.1	132.9	3.3	0.3	0.2	0.7	0.6
<b>France (Dec. 2003=100)</b> .....	100.000	127.5	128.3	6.0	0.1	0.0	1.3	0.6
<b>Germany (Dec. 2003=100)</b> .....	100.000	111.7	112.6	-0.6	0.0	-0.1	-3.0	0.8
<b>United Kingdom (Dec. 2003=100)</b> .....	100.000	120.1	120.5	2.4	0.3	0.1	0.8	0.3
<b>Latin America<sup>4</sup></b> .....	100.000	150.9	151.0	5.3	1.0	0.3	1.3	0.1
Nonmanufacturing.....	19.128	269.0	266.4	14.6	4.1	1.5	5.0	-1.0
Manufacturing.....	80.601	122.6	122.9	3.2	0.3	0.1	0.5	0.2
<b>Mexico (Dec. 2003=100)</b> .....	100.000	129.7	129.1	4.5	-0.2	0.2	0.5	-0.5
Nonmanufacturing (Dec. 2008=100).....	9.178	141.3	134.6	15.9	-2.8	2.6	3.4	-4.7
Manufacturing (Dec. 2008=100).....	90.575	89.1	89.0	3.4	0.2	-0.1	0.3	-0.1
<b>Pacific Rim (Dec. 2003=100)<sup>5</sup></b> .....	100.000	98.5	98.8	0.5	0.1	0.0	0.1	0.3
<b>China (Dec. 2003=100)</b> .....	100.000	100.1	100.3	0.3	0.3	0.0	0.0	0.2
<b>Japan</b> .....	100.000	96.0	96.2	-0.1	0.0	0.0	0.5	0.2
<b>Asian NICs<sup>6</sup></b> .....	100.000	88.1	88.2	3.9	-0.3	0.5	0.6	0.1
<b>ASEAN (Dec. 2003=100)<sup>7</sup></b> .....	100.000	98.3	98.4	0.7	-0.1	0.1	0.2	0.1
<b>Asia Near East (Dec. 2003=100)<sup>8</sup></b> .....	100.000	179.3	179.5	10.4	4.7	2.5	2.9	0.1

<sup>1</sup> Relative importance figures are based on 2016 trade values.

<sup>2</sup> Western Europe, Canada, Japan, Australia, New Zealand, and South Africa.

<sup>3</sup> European Union countries.

<sup>4</sup> Mexico, Central America, South America, and the Caribbean.

<sup>5</sup> China, Japan, Australia, Brunei, Indonesia, Macao, Malaysia, New Zealand, Papua New Guinea, Philippines, and the Asian Newly Industrialized Countries.

<sup>6</sup> Asian Newly Industrialized Countries - Hong Kong, Singapore, South Korea, and Taiwan.

<sup>7</sup> Association of Southeast Asian Nations - Brunei, Cambodia, Indonesia, Laos, Malaysia, Myanmar, Philippines, Singapore, Thailand, and Vietnam.

<sup>8</sup> Bahrain, Iran, Iraq, Israel, Jordan, Kuwait, Lebanon, Oman, Qatar, Saudi Arabia, Syria, United Arab Emirates, and Yemen.

NOTES: Data may be revised in each of the 3 months after original publication.

Regions are not mutually exclusive.

Dash = Not available

**Table 8. U.S. international price indexes and percent changes for selected transportation services: February 2017 to February 2018**

[2000=100, unless otherwise noted]

Description	Relative importance Jan. 2018 <sup>1</sup>	Index		Percent change				
		Jan. 2018	Feb. 2018	Annual	Monthly			
				Feb. 2017 to Feb. 2018	Oct. 2017 to Nov. 2017	Nov. 2017 to Dec. 2017	Dec. 2017 to Jan. 2018	Jan. 2018 to Feb. 2018
<b>Air Freight</b>								
<b>Import Air Freight</b> .....	100.000	177.2	180.1	11.4	6.9	-2.9	-2.4	1.6
Europe (Dec. 2003=100).....	24.755	144.6	151.0	10.6	0.5	0.1	0.4	4.4
Asia.....	62.731	168.2	168.8	13.7	10.5	-4.5	-3.9	0.4
<b>Export Air Freight</b> .....	100.000	167.8	168.1	7.1	1.8	-1.4	0.2	0.2
Europe (Dec. 2006=100).....	32.125	148.3	147.6	0.2	0.0	-0.8	-0.4	-0.5
<b>Inbound Air Freight</b> .....	100.000	169.8	168.1	9.9	5.5	-0.6	0.0	-1.0
Europe (Dec. 2003=100).....	25.377	133.0	140.3	5.6	-1.7	3.4	1.1	5.5
Asia.....	59.590	162.0	154.7	10.8	9.5	-2.2	-2.8	-4.5
<b>Outbound Air Freight</b> .....	100.000	140.8	137.5	-1.0	1.4	-0.9	-0.2	-2.3
Europe (Dec. 2003=100).....	32.941	144.6	143.5	-0.1	2.6	-2.0	0.0	-0.8
Asia.....	43.191	136.4	130.4	-2.7	2.1	-0.5	0.2	-4.4
<b>Air Passenger Fares</b>								
<b>Import Air Passenger Fares</b> .....	100.000	187.7	189.3	4.2	-2.3	6.5	-3.2	0.9
Europe.....	46.279	234.0	238.5	10.3	3.2	-1.0	7.9	1.9
Asia.....	22.081	135.1	127.6	-0.7	-4.6	17.6	-11.1	-5.6
Latin America/Caribbean.....	8.878	156.6	163.8	3.5	4.7	10.8	-13.0	4.6
<b>Export Air Passenger Fares</b> .....	100.000	166.1	151.4	1.2	0.5	3.3	4.7	-8.9
Europe.....	26.904	193.1	206.4	-4.0	1.0	-5.2	-5.1	6.9
Asia.....	27.864	151.0	129.2	4.5	2.8	12.5	12.5	-14.4
Latin America/Caribbean.....	25.120	181.8	165.6	4.6	2.4	3.4	7.3	-8.9

<sup>1</sup> Relative importance figures are based on 2016 trade values.

NOTES: Data may be revised in each of the 3 months after original publication.

Dash = Not available

## TECHNICAL NOTE

**Import and Export Merchandise and Services Price Indexes** - All indexes use a modified Laspeyres formula and are not seasonally adjusted. Price indexes are reweighted annually, with a 2-year lag in the weights. Published series use a base year of 2000=100 where possible. More detailed index series and additional information may be obtained at [www.bls.gov/mxp](http://www.bls.gov/mxp) or by calling (202) 691-7101.

**Merchandise Goods Classification Systems** - The merchandise price indexes are published using three classification systems. Items are classified by end use according to the Bureau of Economic Analysis Classification System, by industry according to the North American Industry Classification System (NAICS), and by product category according to the Harmonized System (HS). While classification by end use and product category are self-explanatory, some notes are in order for classifying items by industry. In the NAICS imports and exports tables, items are classified by output industry, not input industry. As an example, NAICS import index 326 (plastics and rubber products manufacturing) include outputs such as manufactured plastic rather than inputs such as petroleum. The NAICS classification structure also matches the classification system used by the Producer Price Index (PPI) to produce the NAICS primary products indexes.

**Import Price Indexes** - Products have been classified by the Harmonized Tariff Schedule of the United States Annotated (TSUSA). Import prices are based on U.S. dollar prices paid by the U.S. importer. The prices are generally either "free on board" (f.o.b.) foreign port or "cost, insurance, and freight" (c.i.f.) U.S. port transaction prices, depending on the practices of the individual industry. The index for crude petroleum is calculated from data collected by the U.S. Department of Energy.

**Export Price Indexes** - Products have been classified by the Harmonized Schedule B classification system of the U.S. Bureau of the Census. The prices used are generally either "free alongside ship" (f.a.s.) factory or "free on board" (f.o.b.) transaction prices, depending on the practices of the individual industry. Prices used in the grain index, excluding rice, are obtained from the U.S. Department of Agriculture.

**Services Price Indexes** - Starting in September 2008, the import air passenger fares indexes represent changes in the average revenue per passenger received by foreign carriers from U.S. residents and are calculated from data obtained from an airline consulting service. These data include tickets sold by travel agencies and travel websites. Tickets sold directly by the airlines are excluded, as are frequent flyer tickets generally. Starting in January 2008, the export air passenger fares indexes represent changes in the average revenue per passenger received by U.S. carriers from foreign residents and are calculated from data collected directly from airlines. These data include frequent flyer tickets and those sold by consolidators. Taxes and fees are included in the import air passenger fares indexes and excluded from the export air passenger fares indexes. The air freight indexes are calculated from data collected directly from airlines. These data exclude mail and passenger baggage. The scope of the service being priced is the movement of freight from airport to airport only, and does not include any ground transportation or port service. The air freight indexes are presented using two definitions: balance of payments (which represent transactions between U.S. and foreign residents) and international (which represent transactions inbound to and outbound from the U.S.). Fact sheets specifying detailed information for each services industry are available at [www.bls.gov/mxp](http://www.bls.gov/mxp) under "MXP Publications."

**Import Indexes by Locality of Origin** - Prices used in these indexes are a subset of the data collected for the import price indexes. Beginning with January 2002, the indexes are defined by locality of origin using a nomenclature based upon the North American Industry Classification System (NAICS). Nonmanufactured goods are defined as NAICS 11 and 21, and manufactured goods are defined as NAICS 31-33.

**Relative Importance** - A relative importance is a specific index's price-updated value share (expressed as a percentage) of overall imports or exports at a specific point in time. Relative importance values are affected by the trade weights at the point indexes are reweighted and index changes relative to other indexes since the reweight point. If an index is rising in value relative to other indexes over time, the relative importance will increase as well.

**Revision Policy** - To reflect the availability of late reports and corrections by respondents, monthly data may be revised in each of the 3 months after original publication. After 3 months, no further data revisions take place. For example, data first published in the January release will be subject to revision in the releases for February, March, and April.

**Uses of the Data** - The primary use of the indexes is to deflate trade statistics, notably the foreign trade sector of the National Income and Product Accounts (NIPA) constructed by the Department of Commerce. Other published indexes are useful for general market analysis. For trade in international services, balance of payments indexes are used for deflating NIPA, while international indexes are more appropriate for market analysis. Merchandise and services indexes also can be used to study U.S. competitiveness and to compute price elasticities, and the merchandise import indexes by country or region of origin are useful in terms of trade analysis.

**Email Subscription** - The U.S. import and export price indexes news release is available through an email subscription service at [www.bls.gov/bls/list.htm](http://www.bls.gov/bls/list.htm).

**Additional Information** - More detailed data are available on the Import/Export Price Indexes home page at [www.bls.gov/mxp](http://www.bls.gov/mxp). For import and export price indexes data requests, send an email to [mxpinfo@bls.gov](mailto:mxpinfo@bls.gov).

Information from this release will be made available to sensory impaired individuals upon request. Voice phone: (202)-691-5200; Federal Relay Service: 1-(800)-877-8339.