



**Transmission of material in this release is embargoed until
8:30 a.m. (EDT) Tuesday, July 18, 2017**

USDL-17-1010

Technical information: (202) 691-7101 • MXPinfo@bls.gov • www.bls.gov/mxp

Media contact: (202) 691-5902 • PressOffice@bls.gov

U.S. IMPORT AND EXPORT PRICE INDEXES – JUNE 2017

U.S. import prices declined 0.2 percent in June, the U.S. Bureau of Labor Statistics reported today, after a 0.1-percent decrease in May. Lower fuel prices drove the drop in June, which more than offset higher nonfuel prices. The price index for U.S. exports fell 0.2 percent in June following a 0.5-percent decline in May.

Chart 1. One-month percent change in the Import Price Index: June 2016 – June 2017

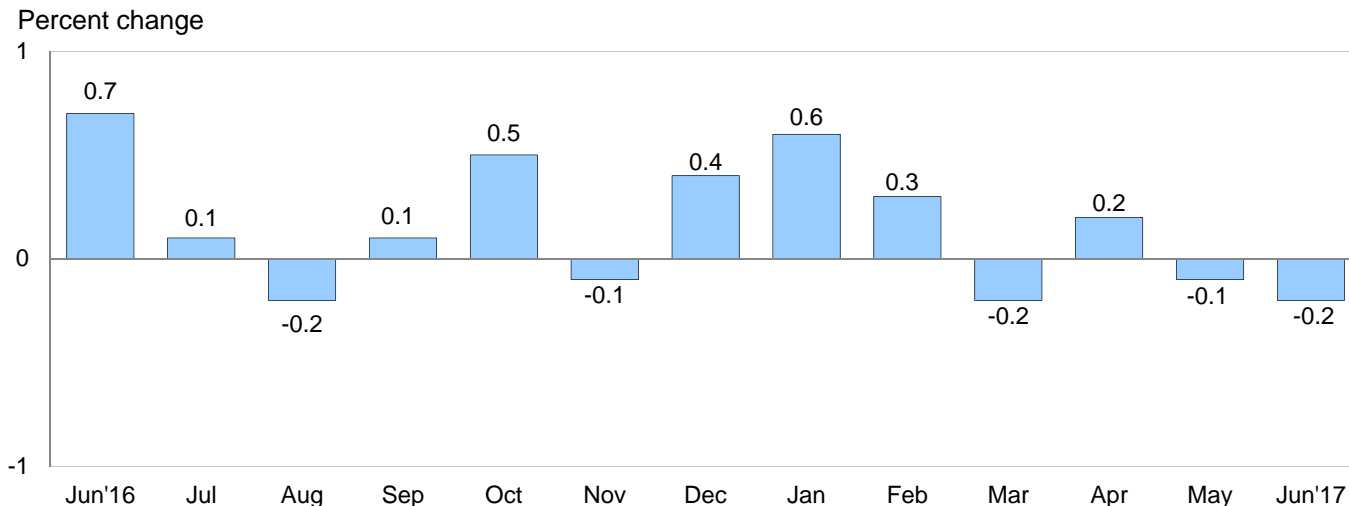
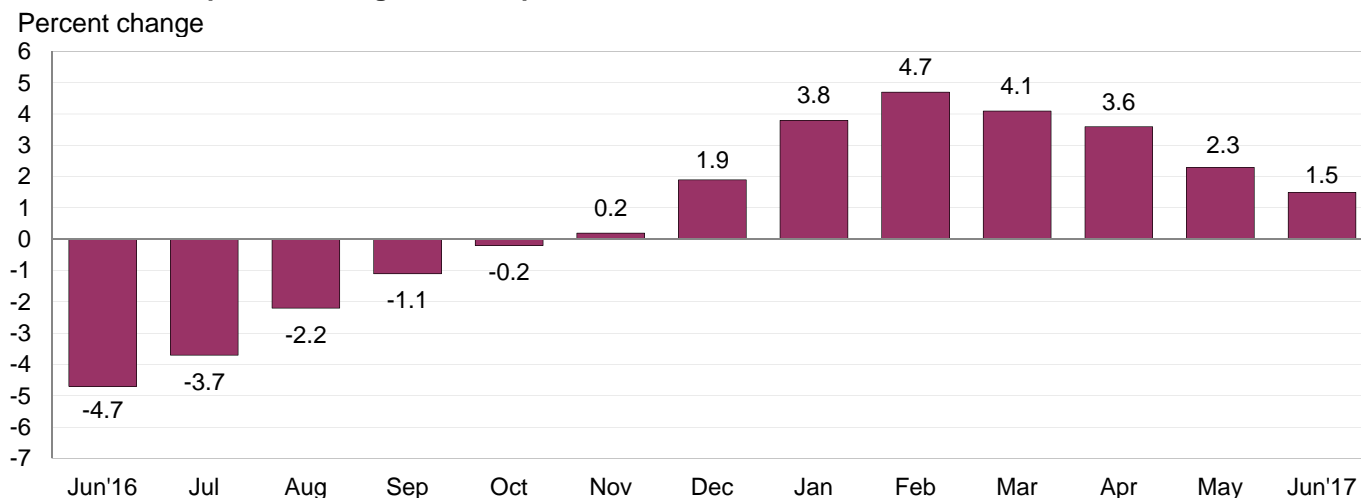


Chart 2. 12-month percent change in the Import Price Index: June 2016 – June 2017



All Imports: Import prices declined 0.2 percent in June. For the second consecutive month the decline was driven by lower fuel prices. Despite the monthly decrease in June, the price index for U.S. imports rose 1.5 percent over the past 12 months. The last over-the-year decline in import prices was a 0.2-percent decrease for the 12-month period ended in October.

Fuel Imports: The price index for fuel imports fell for a fourth consecutive month, declining 2.1 percent in June, after decreasing 4.6 percent over the previous 3 months. The main contributor to the drop was a 2.2-percent decline in petroleum prices. Natural gas prices also fell in June, decreasing 1.0 percent. Despite the recent drops, import fuel prices advanced 6.3 percent over the 12-month period ended in June. The import price index for petroleum increased 4.5 percent over the past year and natural gas prices rose 58.6 percent.

All Imports Excluding Fuel: Prices for nonfuel imports ticked up 0.1 percent in June after recording no change in May. The index for nonfuel imports has not recorded a monthly decline since a 0.1-percent dip in January. Higher import prices for foods, feeds, and beverages and capital goods more than offset lower prices for automotive vehicles, consumer goods, and nonfuel industrial supplies and materials. Prices for nonfuel imports advanced 1.0 percent over the past 12 months and the index has not recorded a 12-month decline since a 0.2-percent decrease in November. Rising prices for nonfuel industrial supplies and materials and foods, feeds, and beverages more than offset decreasing prices for capital goods and automotive vehicles over the 12-month period ended in June. Consumer goods prices recorded no change over the past year.

Table A. Percent change in Import and Export Price Indexes, selected categories

Month	IMPORTS			EXPORTS		
	All imports	Fuel imports	Nonfuel imports	All exports	Agricultural exports	Non-agricultural exports
2016						
June.....	0.7	10.5	-0.2	0.8	2.5	0.5
July.....	0.1	-2.1	0.3	0.2	-0.3	0.3
August.....	-0.2	-3.4	0.0	-0.8	-3.4	-0.6
September.....	0.1	1.3	0.0	0.3	-1.0	0.5
October.....	0.5	6.6	0.0	0.2	0.5	0.2
November.....	-0.1	-1.1	-0.1	0.1	0.7	0.0
December.....	0.4	5.8	0.0	0.4	-0.2	0.4
2017						
January.....	0.6	6.1	-0.1	0.2	0.4	0.2
February.....	0.3	0.3	0.3	0.3	1.4	0.3
March.....	-0.2	-3.0 ^r	0.2	0.1 ^r	1.1	0.0 ^r
April.....	0.2	-0.4 ^r	0.3	0.2	0.1	0.3
May.....	-0.1 ^r	-1.2 ^r	0.0	-0.5 ^r	-1.6	-0.4 ^r
June.....	-0.2	-2.1	0.1	-0.2	-1.5	0.0
June 2015 to 2016.....	-4.7	-24.5	-1.8	-3.5	-1.3	-3.8
June 2016 to 2017.....	1.5	6.3	1.0	0.6	-3.9	1.1

r Revised

Chart 3. One-month percent change in the Export Price Index: June 2016 – June 2017

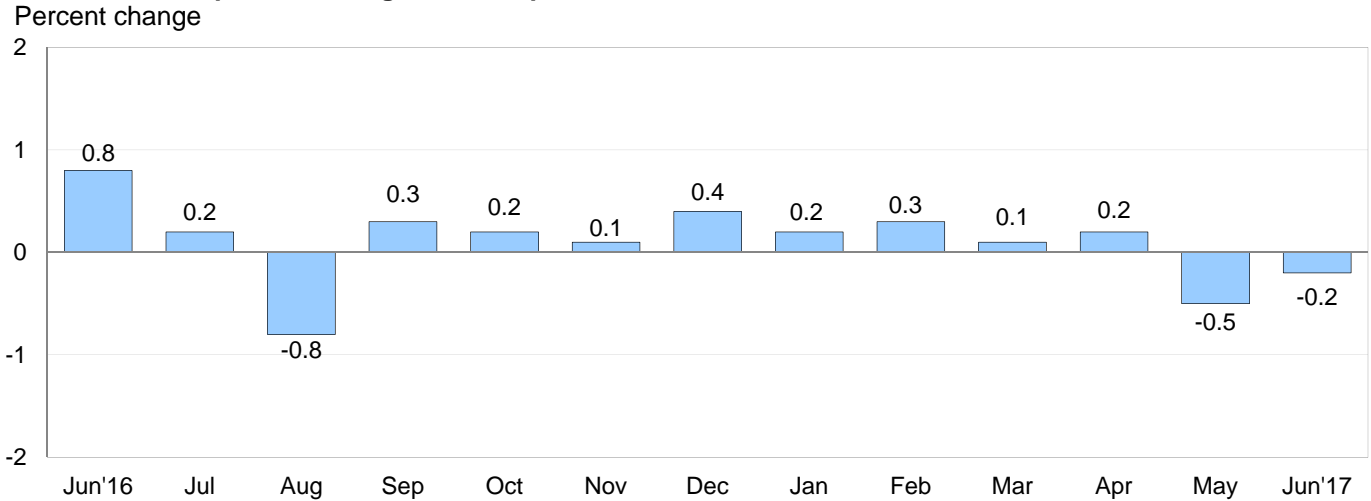
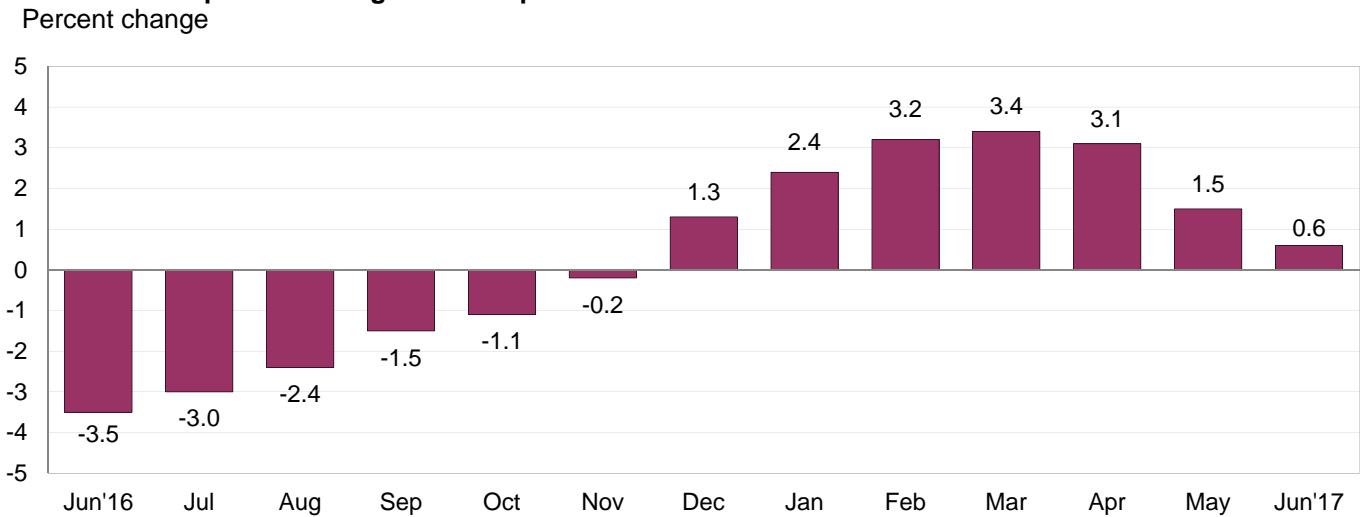


Chart 4. 12-month percent change in the Export Price Index: June 2016 – June 2017



All Exports: Prices for U.S. exports fell for a second consecutive month in June, declining 0.2 percent. Falling prices for agricultural exports drove the decrease as nonagricultural export prices recorded no change. U.S. export prices increased over the past year, advancing 0.6 percent. The price index for U.S. exports has not recorded a 12-month decline since a 0.2-percent fall in November.

Agricultural Exports: The price index for agricultural exports decreased 1.5 percent in June following a 1.6-percent drop in May. Falling prices for vegetables, soybeans, and fruit drove the June decrease, more than offsetting higher prices for meat. Prices for agricultural exports recorded a 3.9-percent decline over the 12-month period ended in June, the first over-the-year decrease since the index fell 0.3 percent for the year ended in December. Lower export prices for soybeans, fruit, and corn led the decrease in agricultural prices between June 2016 and June 2017.

All Exports Excluding Agriculture: Nonagricultural export prices recorded no change in June following a 0.4-percent decline in May. Advancing prices for nonagricultural industrial supplies and materials and consumer goods were offset by decreasing prices for automotive vehicles. Export prices for capital goods recorded no change in June. The price index for nonagricultural exports increased 1.1 percent over the past 12 months as higher prices for nonagricultural industrial supplies and materials and capital goods more than offset falling prices for consumer goods. Automotive vehicle prices recorded no change over the past year.

SELECTED JUNE HIGHLIGHTS

Import Prices

Imports by Locality of Origin: Import prices from China declined 0.1 percent in June. The price index for imports from China fell 1.0 percent over the past 12 months and has not recorded a 12-month increase since advancing 0.1 percent in October 2014. The price index for imports from Japan decreased 0.1 percent in June and increased 1.0 percent over the past year. Import prices fell 0.9 percent from Canada and decreased 0.2 percent from Mexico in June, after advancing 0.8 percent and 0.3 percent, respectively, the previous month. The price index for imports from the European Union rose 0.4 percent in June.

Nonfuel Industrial Supplies and Materials: Prices for nonfuel industrial supplies and materials decreased 0.2 percent in June, after falling 0.4 percent the previous month. A 0.8-percent drop in chemical prices and a 1.0-percent decrease in prices for building materials more than offset higher prices for gold and other precious metals.

Finished Goods: Major finished goods prices were mostly up in June. Import prices for capital goods increased 0.2 percent, after recording no change over the previous 3 months. The increase in capital goods prices was driven by a 0.4-percent advance in prices for computers, peripherals, and semiconductors. Prices for automotive vehicles fell 0.2 percent following increases of 0.1 percent in May and 0.5 percent in April. In contrast, consumer goods prices declined 0.1 percent.

Foods, Feeds, and Beverages: The price index for import foods, feeds, and beverages advanced 0.9 percent in June following a 1.0-percent rise in May and a 0.4-percent increase in April. Import prices for vegetables led the overall advance in June, rising 6.7 percent. Prices for meat imports also contributed to the overall advance in foods, feeds, and beverages prices, increasing 2.1 percent.

Transportation Services: Import air passenger fares advanced 3.7 percent in June. The increase was largely driven by a 10.9-percent rise in Asian fares and a 4.2-percent advance in European fares. Import air passenger fares declined 3.8 percent over the past 12 months. Import air freight prices fell 0.8 percent in June. Despite the decline, the index increased 11.8 percent over the past year, the largest 12-month advance since the index for import air freight rose 13.7 percent in September 2011.

Export Prices

Nonagricultural Industrial Supplies and Materials: Export prices for nonagricultural industrial supplies and materials rose 0.1 percent in June following a 1.4-percent decline in May. The June increase was driven by a 1.7-percent advance for other petroleum products and a 2.8-percent rise in nonmonetary gold prices.

Finished Goods: Price movements for major finished goods exports were mixed in June. Export consumer goods prices rose for the fourth consecutive month, advancing 0.2 percent led by a 0.4-percent increase for manufactured durable goods. The price index for export automotive vehicles fell 0.1 percent in June, after recording no change in May. Export prices for capital goods recorded no change in June.

Transportation Services: Export air passenger fares rose 4.9 percent in June, the largest monthly advance since a 7.9-percent rise in December. European fares drove the increase in June, advancing 7.7 percent. Export air passenger fares rose 2.3 percent for the year ended in June. Export air freight prices increased 0.4 percent in June and rose 4.3 percent over the past year, the largest 12-month increase since a 4.4-percent advance in April 2015.

Import and Export Price Index data for July 2017 are scheduled for release on Tuesday, August 15, 2017 at 8:30 a.m. (EDT).

Table 1. U.S. import price indexes and percent changes for selected categories of goods: June 2016 to June 2017

[2000=100, unless otherwise noted]

Description	End Use	Relative importance May 2017 ¹	Index		Percent change				
			May 2017	June 2017	Annual	Monthly			
					June 2016 to June 2017	Feb. 2017 to Mar. 2017	Mar. 2017 to Apr. 2017	Apr. 2017 to May 2017	May 2017 to June 2017
All commodities		100.000	122.7	122.5	1.5	-0.2	0.2	-0.1	-0.2
All imports excluding food and fuels (Dec. 2010=100)		84.716	98.9	98.9	0.8	0.2	0.2	0.0	0.0
All imports excluding petroleum		91.596	111.9	112.0	1.4	0.1	0.3	0.0	0.1
All imports excluding fuels (Dec. 2001=100)		90.942	115.9	116.0	1.0	0.2	0.3	0.0	0.1
Foods, feeds, & beverages	0	6.183	180.3	182.0	5.6	-0.2	0.4	1.0	0.9
Agricultural foods, feeds & beverages, excluding distilled beverages.....	00	4.832	197.5	199.7	6.6	-0.1	0.6	1.2	1.1
Nonagricultural foods (fish, distilled beverages).....	01	1.351	141.7	142.2	2.6	-0.4	-0.5	0.4	0.4
Industrial supplies & materials	1	22.610	168.6	167.1	5.7	-0.4	0.4	-0.8	-0.9
Industrial supplies & materials excluding petroleum.....		14.395	148.0	147.8	6.5	0.9	1.1	-0.5	-0.1
Industrial supplies & materials excluding fuels (Dec. 2001=100).....		13.586	167.6	167.3	5.2	1.5	0.9	-0.4	-0.2
Industrial supplies & materials, durable....		8.441	158.1	158.1	6.9	1.6	1.1	-0.4	0.0
Industrial supplies & materials nondurable excluding petroleum.....		5.765	135.4	134.8	5.8	0.0	1.0	-0.5	-0.4
Fuels & lubricants.....	10	9.058	172.0	168.4	6.3	-3.0	-0.4	-1.2	-2.1
Petroleum & petroleum products.....	100	8.404	185.0	180.9	4.5	-2.6	-0.7	-1.2	-2.2
Crude.....	10000	5.975	190.0	183.3	3.3	-3.3	-0.6	-0.2	-3.5
Fuels, n.e.s.-coals & gas.....	101	0.500	104.9	104.1	52.0	-10.2	6.1	-2.4	-0.8
Gas-natural.....	10110	0.377	83.6	82.8	58.6	-13.6	8.0	-3.1	-1.0
Paper & paper base stocks.....	11	0.543	106.9	107.4	0.0	-0.1	1.3	0.5	0.5
Materials associated with nondurable supplies & materials.....	12	4.636	154.3	153.5	2.9	1.4	0.4	-0.3	-0.5
Selected building materials.....	13	1.466	146.7	145.2	5.7	1.3	2.5	0.8	-1.0
Unfinished metals related to durable goods.....	14	3.495	213.2	213.8	12.9	2.8	0.9	-1.4	0.3
Finished metals related to durable goods.....	15	1.724	149.1	149.8	3.3	0.4	1.5	0.3	0.5
Nonmetals related to durable goods.....	16	1.687	109.0	108.8	0.1	0.6	0.1	-0.3	-0.2
Capital goods	2	27.433	88.7	88.9	-0.1	0.0	0.0	0.0	0.2
Electric generating equipment.....	20	3.315	116.3	116.8	0.8	0.2	-0.1	-0.1	0.4
Nonelectrical machinery.....	21	21.554	81.3	81.4	-0.1	0.1	0.2	0.0	0.1
Transportation equipment excluding motor vehicles (Dec. 2001=100).....	22	2.565	134.6	134.5	-1.5	-0.1	-1.5	0.1	-0.1
Automotive vehicles, parts & engines	3	16.340	110.7	110.5	-0.1	0.0	0.5	0.1	-0.2
Consumer goods, excluding automotives	4	27.434	107.0	106.9	0.0	-0.2	0.1	0.0	-0.1
Nondurables, manufactured.....	40	13.482	121.7	121.7	1.6	0.1	0.2	0.0	0.0
Durables, manufactured.....	41	12.620	93.0	93.0	-1.3	-0.1	-0.1	-0.1	0.0
Nonmanufactured consumer goods.....	42	1.332	116.4	115.0	-3.4	-3.0	1.2	0.1	-1.2

¹ Relative importance figures are based on 2015 trade values.

NOTES: Data may be revised in each of the 3 months after original publication.

Dash = Not available

Table 2. U.S. export price indexes and percent changes for selected categories of goods: June 2016 to June 2017

[2000=100, unless otherwise noted]

Description	End Use	Relative importance May 2017 ¹	Index		Percent change				
			May 2017	June 2017	Annual June 2016 to June 2017	Monthly			
						Feb. 2017 to Mar. 2017	Mar. 2017 to Apr. 2017	Apr. 2017 to May 2017	May 2017 to June 2017
All commodities.....		100.000	121.8	121.6	0.6	0.1	0.2	-0.5	-0.2
Agricultural commodities.....		9.453	177.5	174.8	-3.9	1.1	0.1	-1.6	-1.5
All exports excluding food and fuels (Dec. 2010=100).....		83.517	98.7	98.7	0.4	0.3	-0.1	-0.1	0.0
Nonagricultural commodities.....		90.547	117.6	117.6	1.1	0.0	0.3	-0.4	0.0
Foods, feeds, & beverages.....	0	8.778	179.2	176.3	-4.2	1.2	0.5	-2.0	-1.6
Agricultural foods, feeds & beverages, excluding distilled beverages.....	00	8.162	178.5	175.8	-4.8	1.0	0.3	-1.9	-1.5
Nonagricultural foods (fish, distilled beverages).....	01	0.616	197.3	191.0	3.3	3.2	3.4	-3.5	-3.2
Industrial supplies & materials.....	1	29.587	145.6	145.6	3.4	-0.1	0.3	-1.3	0.0
Industrial supplies & materials, durable....		10.667	158.1	157.6	3.9	1.2	-0.2	-0.6	-0.3
Industrial supplies & materials, nondurable.....		18.962	139.9	140.1	3.2	-0.8	0.6	-1.7	0.1
Agricultural industrial supplies & materials.....	10	1.292	176.7	174.3	2.5	1.3	-1.2	0.6	-1.4
Nonagricultural industrial supplies & materials.....		28.296	144.6	144.7	3.5	-0.1	0.4	-1.4	0.1
Fuels & lubricants.....	11	7.747	161.4	161.6	9.3	-3.0	3.5	-2.9	0.1
Nonagricultural supplies & materials excluding fuels & building materials.....	12	19.509	150.1	150.2	1.4	0.9	-0.8	-0.9	0.1
Selected building materials.....	13	1.040	120.2	119.9	3.9	1.6	0.4	0.5	-0.2
Capital goods.....	2	38.422	107.7	107.7	0.6	0.2	0.1	0.1	0.0
Electrical generating equipment.....	20	3.979	112.8	112.6	0.1	0.6	0.1	0.0	-0.2
Nonelectrical machinery.....	21	25.141	93.8	93.8	-0.4	0.1	0.1	0.0	0.0
Transportation equipment excluding motor vehicles (Dec. 2001=100).....	22	9.302	170.3	170.5	3.7	0.1	0.2	0.2	0.1
Automotive vehicles, parts & engines.....	3	10.380	113.3	113.2	0.0	0.0	0.2	0.0	-0.1
Consumer goods, excluding automotives.....	4	12.833	108.3	108.5	-1.5	0.2	0.3	0.1	0.2
Nondurables, manufactured.....	40	6.214	104.2	104.3	-1.6	0.0	0.7	0.1	0.1
Durables, manufactured.....	41	5.211	106.9	107.3	-0.5	0.1	0.0	0.1	0.4

¹ Relative importance figures are based on 2015 trade values.

NOTES: Data may be revised in each of the 3 months after original publication.

Dash = Not available

Table 3. U.S. import price indexes and percent changes for selected industries: June 2016 to June 2017
 [December 2005=100, unless otherwise noted]

Description	NAICS	Relative importance May 2017 ¹	Index		Percent change				
			May 2017	June 2017	Annual June 2016 to June 2017	Monthly			
						Feb. 2017 to Mar. 2017	Mar. 2017 to Apr. 2017	Apr. 2017 to May 2017	May 2017 to June 2017
Nonmanufacturing		8.675	95.5	93.7	8.2	-3.7	0.1	0.2	-1.9
Agriculture, forestry, fishing and hunting	11	2.068	185.4	187.2	14.3	-2.8	1.2	2.0	1.0
Crop production.....	111	1.650	197.9	200.8	15.7	-2.9	2.1	2.1	1.5
Animal production (Dec. 2014=100).....	112	0.212	81.2	82.5	2.6	-1.0	-1.1	3.4	1.6
Mining	21	6.607	84.9	82.5	6.3	-3.9	-0.4	-0.2	-2.8
Oil and gas extraction.....	211	6.328	84.3	81.5	5.6	-4.3	-0.1	-0.6	-3.3
Mining (except oil and gas) (Dec. 2006=100).....	212	0.280	110.2	118.9	25.2	2.3	-3.7	6.3	7.9
Manufacturing		91.041	109.9	109.9	0.8	0.3	0.2	-0.1	0.0
Manufacturing, part 1	31	11.956	124.2	124.5	0.5	0.1	0.1	0.2	0.2
Food manufacturing.....	311	3.501	156.0	156.9	2.3	0.3	0.2	0.7	0.6
Beverage and tobacco product manufacturing.....	312	1.062	118.3	118.6	-0.2	0.2	-0.1	0.1	0.3
Textile mills (Dec. 2011=100).....	313	0.399	98.1	98.2	-0.5	0.2	0.2	-0.3	0.1
Textile product mills.....	314	0.933	108.5	108.6	-0.1	0.4	0.0	0.0	0.1
Apparel manufacturing.....	315	4.208	110.9	111.0	-0.3	-0.1	0.0	-0.2	0.1
Leather and allied product manufacturing.....	316	1.852	123.1	123.2	-0.1	-0.1	0.0	0.2	0.1
Manufacturing, part 2	32	17.560	120.2	120.1	3.3	0.7	0.3	-0.5	-0.1
Wood product manufacturing.....	321	0.912	128.9	126.6	9.5	1.9	3.9	1.3	-1.8
Paper manufacturing.....	322	1.024	104.7	105.0	-0.6	-0.1	0.3	0.2	0.3
Printing and related support activities (Dec. 2016=100).....	323	0.223	100.1	100.1	-	0.0	0.0	0.0	0.0
Petroleum and coal products manufacturing.....	324	2.197	80.5	81.6	6.8	0.1	-0.7	-3.2	1.4
Chemical manufacturing.....	325	9.957	135.9	135.5	3.6	0.8	0.4	-0.2	-0.3
Plastics and rubber products manufacturing.....	326	2.238	117.9	117.8	0.5	0.8	0.3	-0.1	-0.1
Nonmetallic mineral product manufacturing.....	327	1.010	128.4	127.6	-1.6	-0.2	0.0	-0.1	-0.6
Manufacturing, part 3	33	61.524	103.5	103.6	0.3	0.1	0.2	-0.1	0.1
Primary metal manufacturing.....	331	4.171	141.0	141.1	11.8	2.4	0.6	-1.2	0.1
Fabricated metal product manufacturing... ..	332	3.094	122.3	122.6	0.4	0.1	0.8	0.0	0.2
Machinery manufacturing.....	333	7.082	116.1	116.4	-0.1	0.1	0.2	-0.2	0.3
Computer and electronic product manufacturing.....	334	17.621	75.8	75.9	-0.8	0.0	0.0	0.0	0.1
Electrical equipment, appliance, and component manufacturing.....	335	4.916	114.5	114.5	0.0	-0.2	0.4	-0.1	0.0
Transportation equipment manufacturing..	336	17.583	109.7	109.5	-0.3	0.0	0.2	0.1	-0.2
Furniture and related product manufacturing.....	337	1.735	115.3	115.3	0.0	0.0	0.1	0.0	0.0
Miscellaneous manufacturing.....	339	5.323	117.4	117.5	-1.9	0.1	-0.2	0.0	0.1

¹ Relative importance figures are based on 2015 trade values.

NOTES: Data may be revised in each of the 3 months after original publication.

Dash = Not available

Table 4. U.S. export price indexes and percent changes for selected industries: June 2016 to June 2017
 [December 2005=100, unless otherwise noted]

Description	NAICS	Relative importance May 2017 ¹	Index		Percent change				
			May 2017	June 2017	Annual	Monthly			
					June 2016 to June 2017	Feb. 2017 to Mar. 2017	Mar. 2017 to Apr. 2017	Apr. 2017 to May 2017	May 2017 to June 2017
Nonmanufacturing.....		7.451	132.7	129.0	1.8	-1.9	1.3	0.0	-2.8
Agriculture, forestry, fishing and hunting.....	11	4.601	154.2	148.5	-8.4	1.4	-0.1	-2.8	-3.7
Crop production.....	111	4.238	160.0	154.4	-9.2	1.1	-0.5	-2.7	-3.5
Mining.....	21	2.850	82.0	80.9	23.3	-7.4	3.9	4.9	-1.3
Mining (except oil and gas).....	212	1.243	102.6	101.7	32.1	-2.7	-3.9	3.2	-0.9
Manufacturing.....		91.051	111.9	112.0	0.6	0.2	0.3	-0.4	0.1
Manufacturing, part 1.....	31	7.111	137.7	137.8	1.7	0.9	-0.1	0.4	0.1
Food manufacturing.....	311	4.780	156.0	156.5	2.7	0.8	0.3	0.5	0.3
Beverage and tobacco product manufacturing.....	312	0.706	111.5	110.6	0.8	2.9	-1.8	1.2	-0.8
Textile mills (Dec. 2016=100).....	313	0.676	101.4	101.2	-	0.3	-0.3	-0.1	-0.2
Leather and allied product manufacturing (Dec. 2016=100).....	316	0.285	98.7	98.5	-	-0.2	-0.2	-1.2	-0.2
Manufacturing, part 2.....	32	23.671	105.8	106.0	-0.2	-0.1	0.7	-1.9	0.2
Paper manufacturing.....	322	1.616	115.7	115.9	-4.1	-2.5	2.3	-1.3	0.2
Petroleum and coal products manufacturing.....	324	4.988	89.7	90.4	3.8	-1.8	3.3	-6.6	0.8
Chemical manufacturing.....	325	13.128	112.7	112.7	-1.1	0.5	-0.2	-0.7	0.0
Plastics and rubber products manufacturing.....	326	2.312	114.6	114.4	-0.8	0.3	-0.5	0.3	-0.2
Nonmetallic mineral product manufacturing.....	327	0.848	113.4	113.6	1.2	1.1	-0.5	0.2	0.2
Manufacturing, part 3.....	33	60.268	111.9	111.9	0.8	0.2	0.2	0.1	0.0
Primary metal manufacturing.....	331	4.036	137.4	137.5	4.6	1.2	0.7	-0.3	0.1
Fabricated metal product manufacturing.....	332	3.333	138.2	138.1	6.1	0.0	0.0	0.6	-0.1
Machinery manufacturing.....	333	10.298	125.4	125.4	-0.6	0.0	0.2	0.0	0.0
Computer and electronic product manufacturing.....	334	14.215	82.6	82.6	-1.3	0.0	0.1	0.0	0.0
Electrical equipment, appliance, and component manufacturing.....	335	3.997	113.1	113.1	0.4	0.5	0.2	0.0	0.0
Transportation equipment manufacturing.....	336	18.562	124.3	124.4	1.8	0.1	0.1	0.1	0.1
Furniture and related product manufacturing (Dec. 2011=100).....	337	0.457	117.5	117.5	2.2	-0.2	0.1	0.0	0.0
Miscellaneous manufacturing.....	339	5.370	118.9	119.1	-0.5	0.3	0.1	0.0	0.2

¹ Relative importance figures are based on 2015 trade values.

NOTES: Data may be revised in each of the 3 months after original publication.

Dash = Not available

Table 5. U.S. import price indexes and percent changes for selected categories of goods: June 2016 to June 2017

[2000=100, unless otherwise noted]

Description	Harmonized system	Relative importance May 2017 ¹	Index		Percent change				
			May 2017	June 2017	Annual	Monthly			
					June 2016 to June 2017	Feb. 2017 to Mar. 2017	Mar. 2017 to Apr. 2017	Apr. 2017 to May 2017	May 2017 to June 2017
Live animals; animal products.....	I	1.518	196.0	198.7	4.9	-0.1	0.3	1.9	1.4
Meat and edible meat offal.....	02	0.455	250.1	254.8	8.0	1.1	1.9	2.5	1.9
Fish and crustaceans, molluscs and other aquatic invertebrates.....	03	0.755	143.9	144.3	3.2	-1.2	-0.8	0.7	0.3
Vegetable products.....	II	2.095	219.7	221.8	19.3	-2.6	2.5	1.5	1.0
Edible vegetables, roots, and tubers.....	07	0.374	425.9	469.8	15.5	-2.4	2.9	1.0	10.3
Edible fruit and nuts; peel of citrus fruit or melons.....	08	0.900	133.3	133.5	62.6	-0.6	4.0	3.7	0.2
Coffee, tea, mate and spices.....	09	0.358	229.9	226.2	-1.4	-0.9	-1.2	-1.1	-1.6
Animal or vegetable fats and oils (Dec. 2009=100).....	III	0.302	115.4	116.4	9.1	-4.9	-0.4	1.7	0.9
Prepared foodstuffs, beverages, and tobacco.....	IV	2.686	160.0	160.7	-1.8	0.8	-0.3	0.0	0.4
Sugars and sugar confectionary (Dec. 2012=100).....	17	0.187	86.9	87.6	1.2	-0.2	0.7	0.5	0.8
Cocoa and cocoa preparations (Dec. 2009=100).....	18	0.189	92.7	96.4	-16.2	0.8	-4.6	-1.7	4.0
Preparations of vegetables, fruit, nuts, or other parts of plants.....	20	0.355	164.8	164.6	6.0	4.2	-0.2	0.1	-0.1
Beverages, spirits, and vinegar.....	22	1.002	127.9	128.2	-0.4	0.2	-0.1	0.0	0.2
Mineral products.....	V	8.959	171.8	168.7	6.8	-2.8	-0.2	-1.0	-1.8
Mineral fuels, oils and residuals, bituminous substances and mineral waxes.....	27	8.712	169.5	165.9	6.7	-2.9	-0.1	-1.2	-2.1
Products of the chemical or allied industries.....	VI	9.367	152.1	151.8	3.4	0.5	0.0	-0.1	-0.2
Inorganic chemicals.....	28	0.568	285.1	276.5	5.9	5.8	1.2	-0.3	-3.0
Organic chemicals.....	29	2.410	124.5	124.1	3.2	1.2	0.2	0.0	-0.3
Pharmaceutical products.....	30	4.354	148.9	148.9	4.6	-0.4	-0.1	0.0	0.0
Fertilizers (Dec. 2009=100).....	31	0.258	73.0	72.7	-6.0	-1.1	-2.9	-4.1	-0.4
Tanning extracts; dye, pigments, varnish, paints & putty (Dec. 2011=100).....	32	0.192	107.0	108.6	10.4	0.0	5.0	0.1	1.5
Essential oils and resinoids (Dec. 2016=100).....	33	0.542	99.2	99.3	-	-0.2	-1.0	0.2	0.1
Miscellaneous chemical products.....	38	0.682	103.4	103.9	3.1	0.7	-0.2	-0.5	0.5
Plastics and articles thereof; rubber and articles thereof.....	VII	3.460	139.9	139.2	1.9	0.6	0.2	0.0	-0.5
Plastics and articles thereof.....	39	2.183	140.8	140.4	0.2	0.6	0.4	0.1	-0.3
Rubber and articles thereof.....	40	1.277	139.6	138.5	5.2	0.4	0.1	-0.1	-0.8
Raw hides, skins, leather, furskins, travel goods, etc.....	VIII	0.687	123.6	123.6	0.1	-0.1	-0.2	0.6	0.0
Articles of leather; travel goods, bags, etc. of various materials.....	42	0.656	128.8	128.8	-0.1	-0.1	-0.2	0.5	0.0
Wood, wood charcoal, cork, straw, basketware and wickerwork.....	IX	0.945	156.5	154.4	9.8	1.9	3.9	1.2	-1.3
Wood and articles of wood; wood charcoal (Dec. 2014=100).....	44	0.920	107.9	106.4	10.1	2.0	3.9	1.3	-1.4
Woodpulp, recovered paper, and paper products.....	X	1.091	110.3	110.6	0.6	0.0	0.3	0.3	0.3
Paper and paperboard; articles of paper pulp, paper or paperboard.....	48	0.721	103.0	102.9	-1.5	0.0	-0.6	-0.1	-0.1
Printed matter (Dec. 2015=100).....	49	0.221	106.1	106.1	5.8	0.0	0.0	0.1	0.0
Textile and textile articles.....	XI	5.359	113.1	113.1	-0.1	0.1	0.0	-0.1	0.0

See footnotes at end of table.

Table 5. U.S. import price indexes and percent changes for selected categories of goods: June 2016 to June 2017 — Continued

[2000=100, unless otherwise noted]

Description	Harmonized system	Relative importance May 2017 ¹	Index		Percent change				
			May 2017	June 2017	Annual June 2016 to June 2017	Monthly			
						Feb. 2017 to Mar. 2017	Mar. 2017 to Apr. 2017	Apr. 2017 to May 2017	May 2017 to June 2017
Articles of apparel and clothing accessories, knitted or crocheted.....	61	2.199	103.5	103.6	0.2	0.0	0.0	-0.3	0.1
Articles of apparel and clothing accessories, not knitted or crocheted.....	62	1.838	119.0	118.9	-0.8	-0.1	0.0	0.0	-0.1
Made-up or worn textile articles.....	63	0.654	103.8	103.8	0.9	0.4	0.0	0.1	0.0
Headgear, umbrellas, artificial flowers, etc.....	XII	1.525	122.3	122.3	-0.5	-0.1	0.0	0.0	0.0
Footwear and parts of such articles.....	64	1.291	121.4	121.4	-0.5	-0.1	0.0	0.0	0.0
Stone, plaster, cement, asbestos, ceramics, glass etc.....	XIII	0.942	129.8	129.1	-2.0	-0.2	0.0	-0.2	-0.5
Articles of stone, plaster, cement, asbestos, or mica (Dec. 2015=100).....	68	0.324	95.7	94.2	-5.3	-0.3	-0.1	-0.5	-1.6
Ceramic products.....	69	0.273	136.7	136.6	-0.4	-0.3	0.1	-0.1	-0.1
Glass and glassware.....	70	0.345	130.0	129.9	-0.1	0.1	0.1	0.2	-0.1
Pearls, stones, precious metals, imitation jewelry, and coins.....	XIV	2.796	168.5	170.6	1.8	1.3	0.4	-1.2	1.2
Base metals and articles of base metals. ...	XV	5.541	166.5	166.0	7.0	1.4	0.8	-0.5	-0.3
Iron and steel.....	72	1.367	197.8	195.5	15.3	3.0	1.6	-0.7	-1.2
Articles of iron or steel.....	73	1.664	141.1	142.0	2.9	0.3	1.2	0.4	0.6
Copper and articles thereof.....	74	0.378	266.3	266.2	10.4	0.9	-1.7	-1.8	0.0
Aluminum and articles thereof.....	76	0.812	129.4	128.4	6.2	3.0	0.9	-0.4	-0.8
Tools, implements, cutlery, spoons and forks, of base metal; parts thereof.....	82	0.435	122.7	122.4	0.1	0.1	0.1	-0.2	-0.2
Miscellaneous articles of base metal.....	83	0.522	136.6	136.5	-0.1	0.1	0.8	0.1	-0.1
Machinery, electrical equipment, TV image and sound recorders, parts, etc.....	XVI	29.837	80.4	80.4	-0.5	0.0	0.0	0.0	0.0
Machinery and mechanical appliances; parts thereof.....	84	14.824	85.7	85.8	0.0	0.1	0.1	0.0	0.1
Electrical machinery and equip, sound and TV recorders & reproducers, parts.....	85	15.014	75.3	75.3	-0.9	-0.1	-0.1	0.0	0.0
Vehicles, aircraft, vessels and associated transport equipment.....	XVII	14.669	114.3	114.2	0.0	0.0	0.4	0.0	-0.1
Motor vehicles and their parts.....	87	13.201	113.2	113.2	0.3	0.0	0.5	0.0	0.0
Aircraft, spacecraft, and parts thereof (Dec. 2002=100).....	88	1.336	116.1	115.8	-2.7	-0.2	-2.1	0.0	-0.3
Optical, photo, measuring, medical & musical instruments; & timepieces.....	XVIII	3.852	101.1	101.4	-1.9	-0.2	0.2	-0.2	0.3
Optical, photographic, measuring and medical instruments.....	90	3.524	97.8	98.0	-2.3	-0.2	0.2	-0.2	0.2
Clocks and watches and parts thereof.....	91	0.268	142.0	142.5	0.7	-0.1	0.2	0.0	0.4
Miscellaneous manufactured articles.....	XX	4.292	110.9	110.9	-1.2	0.1	-0.4	0.0	0.0
Furniture & stuffed furnishings; lamps & lighting fittings, nesoi; prefab bldgs.....	94	2.653	116.5	116.4	-0.3	0.0	0.0	0.1	-0.1
Toys, games and sports equipment; parts and accessories thereof.....	95	1.363	101.4	101.4	-2.1	0.0	-1.3	0.0	0.0
Miscellaneous manufactured articles.....	96	0.276	129.9	129.7	-4.3	0.1	0.0	0.1	-0.2

¹ Relative importance figures are based on 2015 trade values.

NOTES: Data may be revised in each of the 3 months after original publication.

Dash = Not available

Table 6. U.S. export price indexes and percent changes for selected categories of goods: June 2016 to June 2017

[2000=100, unless otherwise noted]

Description	Harmoni- zied system	Relative importance May 2017 ¹	Index		Percent change				
			May 2017	June 2017	Annual	Monthly			
					June 2016 to June 2017	Feb. 2017 to Mar. 2017	Mar. 2017 to Apr. 2017	Apr. 2017 to May 2017	May 2017 to June 2017
Live animals; animal products.....	I	1.895	203.4	206.6	10.9	2.7	1.0	-0.3	1.6
Meat & edible meat offal (Dec. 2006=100)...	02	1.112	162.1	166.2	11.2	5.3	0.8	1.6	2.5
Fish and crustaceans, mollusks and aquatic invertebrates (Dec. 2016=100).....	03	0.399	106.8	102.1	-	3.3	6.0	-6.7	-4.4
Vegetable products.....	II	4.301	194.5	187.1	-10.0	1.3	0.5	-4.9	-3.8
Edible fruit and nuts; peel of citrus fruit or melons.....	08	0.823	137.6	133.4	-15.7	2.1	-1.1	-3.1	-3.1
Cereals.....	10	1.203	175.2	177.4	-7.8	2.3	-4.7	0.9	1.3
Oilseeds and misc. grains, seeds, fruits, plants, straw and fodder.....	12	1.629	196.1	190.7	-13.4	1.6	-8.7	2.0	-2.8
Prepared foodstuffs, beverages, and tobacco.....	IV	3.102	148.7	147.3	-1.8	0.6	0.4	0.5	-0.9
Preparations of vegetables, fruit, nuts or other parts of plants (Dec. 2009=100)....	20	0.385	117.0	117.0	-1.6	0.1	0.2	0.1	0.0
Beverages, spirits, and vinegar (Dec. 2008=100).....	22	0.555	112.0	111.0	-0.1	1.4	1.0	-0.1	-0.9
Residues and waste from the food industries; prepared animal feed.....	23	0.723	196.3	191.9	-8.2	-1.0	-1.1	0.7	-2.2
Mineral products.....	V	8.058	191.7	191.7	14.4	-2.9	3.2	-2.3	0.0
Ores, slag and ash (Dec. 2012=100).....	26	0.544	91.4	89.5	17.9	-0.7	0.6	-2.1	-2.1
Mineral fuels, oils and residuals, bituminous substances and mineral waxes.....	27	7.320	183.0	183.3	14.5	-3.2	3.5	-2.5	0.2
Products of the chemical or allied industries.....	VI	10.778	133.1	132.7	-2.6	0.4	-0.7	-0.5	-0.3
Inorganic chemicals.....	28	0.808	168.3	160.3	-7.7	-0.3	-5.1	-0.2	-4.8
Organic chemicals.....	29	2.495	129.3	130.0	-2.3	1.6	-2.4	-2.1	0.5
Pharmaceutical products.....	30	3.171	104.5	104.7	-2.4	0.0	1.1	0.2	0.2
Fertilizers (Dec. 2016=100).....	31	0.254	109.8	107.7	-	3.8	4.1	1.9	-1.9
Tanning or dyeing extracts, dyes, paints varnish, putty, & inks (Dec. 2015=100)....	32	0.527	98.6	100.3	1.9	0.2	0.3	0.4	1.7
Essential oils and resinoids; perfumery cosmetic or toilet preparations.....	33	0.825	133.4	132.7	-1.3	0.1	1.1	-0.1	-0.5
Soap; lubricants; waxes, polishing or scouring products; candles, pastes.....	34	0.505	113.5	112.5	-3.4	-0.6	-1.1	-1.1	-0.9
Miscellaneous chemical products.....	38	1.758	144.4	143.5	-3.1	-0.2	-0.4	-0.3	-0.6
Plastics and articles thereof; rubber and articles thereof.....	VII	5.133	137.8	138.0	1.2	1.1	0.1	-1.1	0.1
Plastics and articles thereof.....	39	4.144	132.4	132.9	0.9	0.7	0.3	-0.5	0.4
Rubber and articles thereof.....	40	0.989	161.1	159.9	2.6	2.6	-0.5	-3.4	-0.7
Raw hides, skins, leather, furskins, travel goods, etc.....	VIII	0.348	122.0	121.1	1.5	0.7	-0.2	-1.4	-0.7
Wood, wood charcoal, cork, straw, baskets and wickerwork (Dec. 2014=100).....	IX	0.638	98.2	97.2	1.8	4.3	0.3	1.3	-1.0
Woodpulp, recovered paper, and paper products.....	X	2.100	123.9	126.7	4.5	2.4	-3.6	-0.3	2.3
Woodpulp and recovered paper.....	47	0.651	130.4	139.3	13.7	6.8	-11.7	-0.9	6.8
Paper and paperboard; articles of paper pulp, paper or paperboard.....	48	1.095	120.2	120.5	0.7	0.1	0.8	-0.1	0.2
Printed material (Dec. 2014=100).....	49	0.354	101.5	101.5	1.1	0.9	0.0	0.0	0.0
Textile and textile articles.....	XI	1.764	121.1	120.3	0.7	-0.6	0.1	0.0	-0.7
Cotton, including yarns and woven fabrics thereof.....	52	0.471	130.6	127.5	8.1	1.1	0.1	0.5	-2.4

See footnotes at end of table.

Table 6. U.S. export price indexes and percent changes for selected categories of goods: June 2016 to June 2017 — Continued

[2000=100, unless otherwise noted]

Description	Harmoni- zied system	Relative importance May 2017 ¹	Index		Percent change				
			May 2017	June 2017	Annual	Monthly			
					June 2016 to June 2017	Feb. 2017 to Mar. 2017	Mar. 2017 to Apr. 2017	Apr. 2017 to May 2017	May 2017 to June 2017
Stone, plaster, cement, asbestos, ceramics, glass etc.....	XIII	0.838	122.8	123.0	0.2	0.8	-0.6	0.2	0.2
Articles of stone, plaster, cement, asbestos, or mica (Dec. 2015=100).....	68	0.280	101.1	101.1	0.6	0.8	0.2	-0.1	0.0
Glass and glassware.....	70	0.429	99.2	99.1	-0.6	0.0	0.0	-0.1	-0.1
Pearls, stones, precious metals, imitation jewelry, and coins.....	XIV	4.192	230.5	233.5	1.7	1.8	0.3	-0.8	1.3
Base metals and articles of base metals. ...	XV	4.986	152.7	151.2	5.5	1.0	0.3	-0.1	-1.0
Iron and steel.....	72	1.045	157.3	153.4	6.0	2.3	-0.2	-0.7	-2.5
Copper and articles thereof.....	74	0.478	168.6	167.8	11.8	-0.4	0.2	-0.3	-0.5
Aluminum and articles thereof.....	76	0.862	113.9	111.3	6.3	2.9	0.9	0.2	-2.3
Tools, implements, cutlery, spoons and forks, of base metal (Dec. 2015=100).	82	0.350	99.5	99.5	-0.5	0.0	0.0	0.0	0.0
Miscellaneous articles of base metal.....	83	0.348	148.2	148.0	0.2	0.3	0.0	0.0	-0.1
Machinery, electrical equipment, TV image and sound recorders, parts, etc.....	XVI	28.848	96.1	96.1	0.2	0.1	0.1	0.1	0.0
Machinery and mechanical appliances; parts thereof.....	84	16.968	113.7	113.8	0.8	0.0	0.4	0.0	0.1
Electrical machinery and equipment and parts and accessories thereof.....	85	11.880	77.0	77.0	-0.6	0.1	0.0	0.0	0.0
Vehicles, aircraft, vessels and associated transport equipment.....	XVII	15.046	132.6	132.7	0.8	0.0	0.2	0.0	0.1
Motor vehicles and their parts.....	87	8.735	115.2	115.1	0.2	0.0	0.2	-0.1	-0.1
Optical, photo, measuring, medical & musical instruments; & timepieces.....	XVIII	6.074	106.4	106.7	0.6	0.0	0.0	0.1	0.3
Miscellaneous manufactured articles.....	XX	1.493	112.4	112.4	0.7	-0.2	-0.1	-0.1	0.0
Furniture; stuffed furnishings; lamps and lighting fittings nesoi;.....	94	0.903	128.4	128.4	1.7	-0.2	0.2	0.0	0.0
Toys, games and sports equipment; parts and accessories thereof.....	95	0.437	88.7	88.7	-0.6	-0.2	-0.7	0.0	0.0

¹ Relative importance figures are based on 2015 trade values.

NOTES: Data may be revised in each of the 3 months after original publication.

Dash = Not available

Table 7. U.S. import price indexes and percent changes by locality of origin: June 2016 to June 2017
 [2000=100, unless otherwise noted]

Description	Relative importance May 2017 ¹	Index		Percent change				
		May 2017	June 2017	Annual	Monthly			
				June 2016 to June 2017	Feb. 2017 to Mar. 2017	Mar. 2017 to Apr. 2017	Apr. 2017 to May 2017	May 2017 to June 2017
Industrialized Countries²	100.000	119.4	119.3	1.6	-0.3	0.2	0.2	-0.1
Nonmanufacturing.....	8.627	137.5	134.7	6.6	-4.0	-0.7	3.4	-2.0
Manufacturing.....	90.919	117.5	117.6	1.1	0.0	0.3	-0.1	0.1
Other Countries³	100.000	119.2	118.9	0.4	-0.2	0.2	-0.3	-0.3
Nonmanufacturing.....	8.798	194.4	190.9	9.0	-3.7	0.1	-0.9	-1.8
Manufacturing.....	90.996	102.8	102.7	-0.4	0.2	0.1	-0.2	-0.1
Canada	100.000	125.3	124.2	3.4	-1.1	-0.1	0.8	-0.9
Nonmanufacturing.....	23.900	131.8	128.5	6.5	-4.2	-0.8	3.4	-2.5
Manufacturing.....	75.318	127.4	126.9	2.4	-0.2	0.1	0.1	-0.4
European Union⁴	100.000	132.3	132.8	0.5	0.2	0.0	0.0	0.4
Manufacturing.....	99.459	129.0	129.4	0.5	0.2	0.1	0.0	0.3
France (Dec. 2003=100)	100.000	120.8	121.1	-1.2	0.3	-0.4	-0.1	0.2
Germany (Dec. 2003=100)	100.000	113.8	114.1	0.8	0.0	0.5	-0.1	0.3
United Kingdom (Dec. 2003=100)	100.000	117.3	117.7	-0.9	0.0	-0.5	0.2	0.3
Latin America⁵	100.000	143.3	142.6	2.3	-0.6	0.7	-0.2	-0.5
Nonmanufacturing.....	17.936	221.3	217.7	10.5	-4.8	0.9	-0.9	-1.6
Manufacturing.....	81.723	120.3	120.1	0.6	0.5	0.6	-0.1	-0.2
Mexico (Dec. 2003=100)	100.000	126.9	126.7	0.2	0.4	2.0	0.3	-0.2
Nonmanufacturing (Dec. 2008=100).....	8.845	123.5	123.4	15.3	2.2	1.0	3.0	-0.1
Manufacturing (Dec. 2008=100).....	90.846	88.1	88.0	-1.1	0.2	2.1	0.0	-0.1
Pacific Rim (Dec. 2003=100)⁶	100.000	98.4	98.3	-0.2	0.1	0.0	0.0	-0.1
China (Dec. 2003=100)	100.000	100.1	100.0	-1.0	0.2	-0.1	0.0	-0.1
Japan	100.000	96.4	96.3	1.0	0.2	-0.1	0.0	-0.1
Asian NICs⁷	100.000	85.8	85.9	1.9	0.4	0.7	0.0	0.1
ASEAN (Dec. 2003=100)⁸	100.000	98.0	98.0	0.8	0.1	0.1	0.1	0.0
Asia Near East (Dec. 2003=100)⁹	100.000	152.8	149.2	3.2	-1.5	-2.8	-1.8	-2.4

¹ Relative importance figures are based on 2015 trade values.

² Western Europe, Canada, Japan, Australia, New Zealand, and South Africa.

³ Eastern Europe, Latin America, OPEC countries, and other countries in Asia, Africa, and the Western Hemisphere.

⁴ European Union countries.

⁵ Mexico, Central America, South America, and the Caribbean.

⁶ China, Japan, Australia, Brunei, Indonesia, Macao, Malaysia, New Zealand, Papua New Guinea, Philippines, and the Asian Newly Industrialized Countries.

⁷ Asian Newly Industrialized Countries - Hong Kong, Singapore, South Korea, and Taiwan.

⁸ Association of Southeast Asian Nations - Brunei, Cambodia, Indonesia, Laos, Malaysia, Myanmar, Philippines, Singapore, Thailand, and Vietnam.

⁹ Bahrain, Iran, Iraq, Israel, Jordan, Kuwait, Lebanon, Oman, Qatar, Saudi Arabia, Syria, United Arab Emirates, and Yemen.

NOTES: Data may be revised in each of the 3 months after original publication.

Regions are not mutually exclusive.

Dash = Not available

Table 8. U.S. international price indexes and percent changes for selected transportation services: June 2016 to June 2017

[2000=100, unless otherwise noted]

Description	Relative importance May 2017 ¹	Index		Percent change				
		May 2017	June 2017	Annual June 2016 to June 2017	Monthly			
					Feb. 2017 to Mar. 2017	Mar. 2017 to Apr. 2017	Apr. 2017 to May 2017	May 2017 to June 2017
Air Freight								
Import Air Freight	100.000	166.2	164.8	11.8	0.6	1.5	0.7	-0.8
Europe (Dec. 2003=100).....	24.945	140.8	139.0	0.7	0.1	2.9	0.1	-1.3
Asia.....	62.050	152.9	151.9	18.6	1.1	1.6	0.3	-0.7
Export Air Freight	100.000	159.4	160.1	4.3	1.4	-0.3	0.5	0.4
Europe (Dec. 2006=100).....	35.971	146.9	146.9	1.0	-0.2	0.0	-0.1	0.0
Inbound Air Freight	100.000	155.6	155.7	9.8	0.3	0.7	0.8	0.1
Europe (Dec. 2003=100).....	26.720	132.3	132.7	-2.0	-0.5	0.9	-0.8	0.3
Asia.....	59.479	143.5	143.8	17.5	0.7	1.4	0.6	0.2
Outbound Air Freight	100.000	139.5	138.7	0.5	0.4	-1.6	1.8	-0.6
Europe (Dec. 2003=100).....	30.782	145.4	145.4	3.1	0.6	0.7	0.0	0.0
Asia.....	46.546	134.1	132.7	0.8	0.3	-4.0	4.0	-1.0
Air Passenger Fares								
Import Air Passenger Fares	100.000	175.3	181.7	-3.8	-4.0	-3.2	3.9	3.7
Europe.....	39.872	189.5	197.4	-11.9	-8.6	-7.5	3.7	4.2
Asia.....	22.573	136.2	151.1	2.3	-0.4	0.2	6.2	10.9
Latin America/Caribbean.....	9.746	156.0	162.7	6.8	2.4	0.9	-4.6	4.3
Export Air Passenger Fares	100.000	149.3	156.6	2.3	4.1	-6.0	1.9	4.9
Europe.....	30.587	192.9	207.7	-2.4	-4.5	-9.2	3.4	7.7
Asia.....	25.292	123.4	128.2	-4.2	2.2	-1.7	-0.6	3.9
Latin America/Caribbean.....	24.383	158.7	161.6	5.5	5.7	-3.0	-2.3	1.8

¹ Relative importance figures are based on 2015 trade values.

NOTES: Data may be revised in each of the 3 months after original publication.

Dash = Not available

TECHNICAL NOTE

Announcement - The Bureau of Labor Statistics is utilizing new index estimation and review systems for the import and export price indexes effective with the release of the June 2017 price data on July 18, 2017. The new estimation and index review systems, the first major improvement to the existing systems in over 20 years, are redesigned, state-of-the-art systems with improved flexibility and review capabilities. The changes to the systems will not have a significant effect on the estimates of price change for the U.S. import and export price indexes.

Import and Export Merchandise and Services Price Indexes - All indexes use a modified Laspeyres formula and are not seasonally adjusted. Price indexes are reweighted annually, with a 2-year lag in the weights. Published series use a base year of 2000=100 where possible. More detailed index series and additional information may be obtained at www.bls.gov/mxp or by calling (202) 691-7101.

Merchandise Goods Classification Systems - The merchandise price indexes are published using three classification systems. Items are classified by end use according to the Bureau of Economic Analysis Classification System, by industry according to the North American Industry Classification System (NAICS), and by product category according to the Harmonized System (HS). While classification by end use and product category are self-explanatory, some notes are in order for classifying items by industry. In the NAICS imports and exports tables, items are classified by output industry, not input industry. As an example, NAICS import index 326 (plastics and rubber products manufacturing) include outputs such as manufactured plastic rather than inputs such as petroleum. The NAICS classification structure also matches the classification system used by the Producer Price Index (PPI) to produce the NAICS primary products indexes.

Import Price Indexes - Products have been classified by the Harmonized Tariff Schedule of the United States Annotated (TSUSA). Import prices are based on U.S. dollar prices paid by the U.S. importer. The prices are generally either "free on board" (f.o.b.) foreign port or "cost, insurance, and freight" (c.i.f.) U.S. port transaction prices, depending on the practices of the individual industry. The index for crude petroleum is calculated from data collected by the U.S. Department of Energy.

Export Price Indexes - Products have been classified by the Harmonized Schedule B classification system of the U.S. Bureau of the Census. The prices used are generally either "free alongside ship" (f.a.s.) factory or "free on board" (f.o.b.) transaction prices, depending on the practices of the individual industry. Prices used in the grain index, excluding rice, are obtained from the U.S. Department of Agriculture.

Services Price Indexes - Starting in September 2008, the import air passenger fares indexes represent changes in the average revenue per passenger received by foreign carriers from U.S. residents and are calculated from data obtained from an airline consulting service. These data include tickets sold by travel agencies and travel websites. Tickets sold directly by the airlines are excluded, as are frequent flyer tickets generally. Starting in January 2008, the export air passenger fares indexes represent changes in the average revenue per passenger received by U.S. carriers from foreign residents and are calculated from data collected directly from airlines. These data include frequent flyer tickets and those sold by consolidators. Taxes and fees are included in the import air passenger fares indexes and excluded from the export air passenger fares indexes. The air freight indexes are calculated from data collected directly from airlines. These data exclude mail and passenger baggage. The scope of the service being priced is the movement of freight from airport to airport only, and does not include any ground transportation or port service. The air freight indexes are presented using two definitions: balance of payments (which represent transactions between U.S. and foreign residents) and international (which represent transactions inbound to and outbound from the U.S.). Fact sheets specifying detailed information for each services industry are available at www.bls.gov/mxp under "MXP Publications."

Import Indexes by Locality of Origin - Prices used in these indexes are a subset of the data collected for the import price indexes. Beginning with January 2002, the indexes are defined by locality of origin using a nomenclature based upon the North American Industry Classification System (NAICS). Nonmanufactured goods are defined as NAICS 11 and 21, and manufactured goods are defined as NAICS 31-33.

Revision Policy - To reflect the availability of late reports and corrections by respondents, monthly data may be revised in each of the 3 months after original publication. After 3 months, no further data revisions take place. For example, data first published in the January release will be subject to revision in the releases for February, March, and April.

Uses of the Data - The primary use of the indexes is to deflate trade statistics, notably the foreign trade sector of the National Income and Product Accounts (NIPA) constructed by the Department of Commerce. Other published indexes are useful for general market analysis. For trade in international services, balance of payments indexes are used for deflating NIPA, while international indexes are more appropriate for market analysis. Merchandise and services indexes also can be used to study U.S. competitiveness and to compute price elasticities, and the merchandise import indexes by country or region of origin are useful in terms of trade analysis.

Email Subscription - The U.S. import and export price indexes news release is available through an email subscription service at www.bls.gov/bls/list.htm.

Additional Information - More detailed data are available on the Import/Export Price Indexes home page at www.bls.gov/mxp. For import and export price indexes data requests, send an email to mxpinfo@bls.gov.

Information from this release will be made available to sensory impaired individuals upon request. Voice phone: (202)-691-5200; Federal Relay Service: 1-(800)-877-8339.