



**Transmission of material in this release is embargoed until
 8:30 a.m. (EDT) Friday, July 13, 2018**

USDL-18-1145

Technical information: (202) 691-7101 • MXPinfo@bls.gov • www.bls.gov/mxp
 Media contact: (202) 691-5902 • PressOffice@bls.gov

U.S. IMPORT AND EXPORT PRICE INDEXES – JUNE 2018

(NOTE: A problem occurred with the calculation of the U.S. export air passenger fares indexes that were released with the June 14, 2018, release of the May U.S Import and Export Price Indexes. The corrected data have been issued with this news release.)

U.S. import prices decreased 0.4 percent in June, the U.S. Bureau of Labor Statistics reported today, following a 0.9-percent advance in May. Lower prices for nonfuel and fuel imports contributed to the June decline. Prices for U.S. exports rose 0.3 percent in June, after rising 0.6 percent the previous month.

Chart 1. One-month percent change in the Import Price Index: June 2017 – June 2018

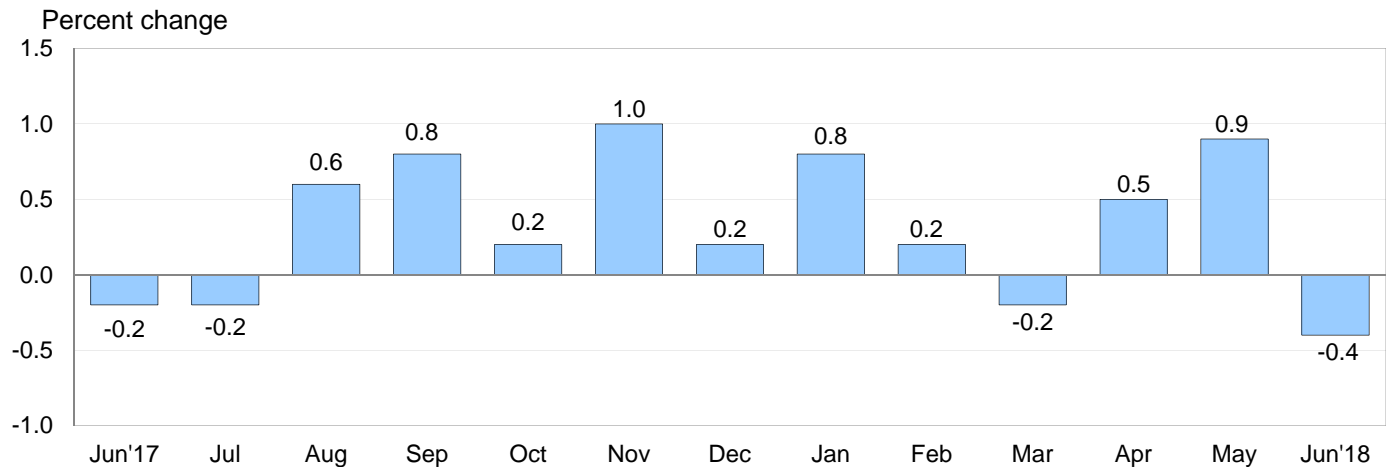
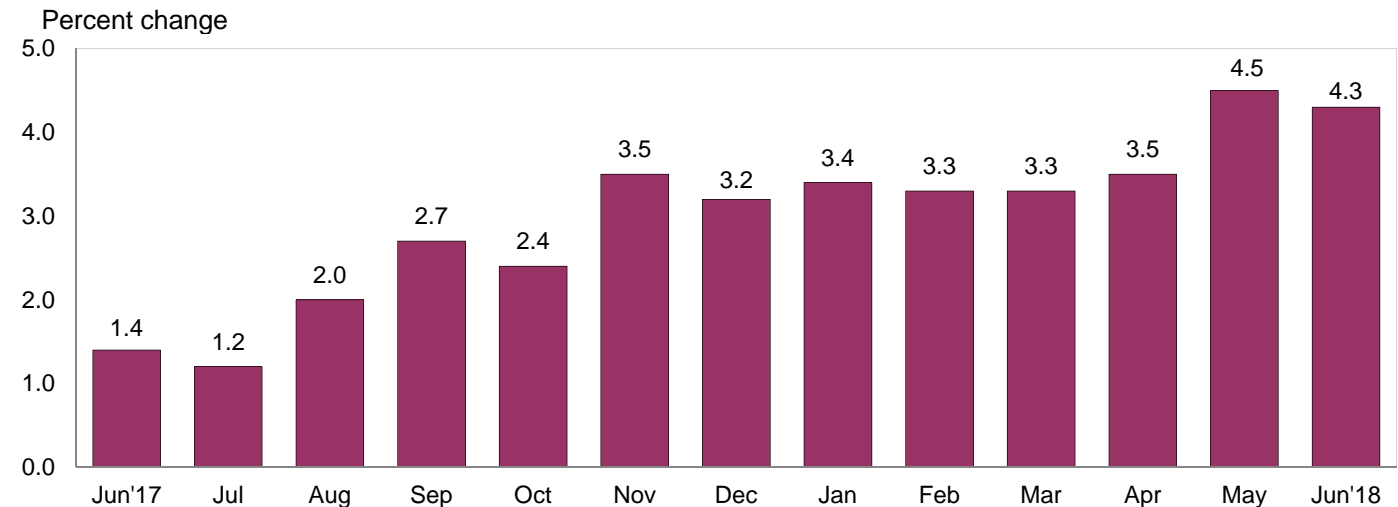


Chart 2. 12-month percent change in the Import Price Index: June 2017 – June 2018



All Imports: The price index for U.S. imports fell 0.4 percent in June, after increasing 0.9 percent in May and 0.5 percent in April. The June decline was the largest monthly drop since the index decreased 0.5 percent in February 2016. Despite the downturn in June, overall import prices advanced 4.3 percent between June 2017 and June 2018.

Fuel Imports: Import fuel prices decreased 0.7 percent in June, after a 6.1-percent advance in May and a 3.9-percent rise in April. Falling prices for both petroleum and natural gas contributed to the overall drop in June fuel prices. Prices for petroleum fell 0.8 percent in June following advances of 7.4 percent in May and 4.2 percent in April. Natural gas prices fell 6.0 percent in June, after a 24.7-percent drop the previous month. The price index for natural gas has not recorded a monthly increase since a 13.4-percent advance in January. Fuel prices rose 33.8 percent over the past 12 months, driven by a 37.8-percent increase in petroleum prices over the same period. In contrast, natural gas prices declined 27.8 percent over the past year, the largest 12-month drop since the index fell 34.8 percent for June 2016.

All Imports Excluding Fuel: Prices for nonfuel imports decreased 0.3 percent in June following a 0.2-percent increase in May. The June decline was led by lower prices for foods, feeds, and beverages; consumer goods; capital goods; and automotive vehicles which more than offset higher prices for nonfuel industrial supplies and materials. The price index for nonfuel imports advanced 1.5 percent for the year ended in June, driven by higher prices for nonfuel industrial supplies and materials; capital goods; and consumer goods.

Table A. Percent change in Import and Export Price Indexes, selected categories

Month	IMPORTS			EXPORTS		
	All imports	Fuel imports	Nonfuel imports	All exports	Agricultural exports	Non-agricultural exports
2017						
June.....	-0.2	-3.6	0.1	-0.1	-1.4	0.0
July.....	-0.2	-1.0	-0.1	0.5	1.8	0.3
August.....	0.6	4.0	0.3	0.6	0.0	0.7
September.....	0.8	5.7	0.3	0.8	-0.7	0.9
October.....	0.2	0.3	0.1	0.1	2.0	-0.1
November.....	1.0	9.8	0.0	0.5	-0.7	0.7
December.....	0.2	3.3	-0.2	0.1	-0.3	0.0
2018						
January.....	0.8	3.3	0.5	0.7	0.0	0.8
February.....	0.2	-1.8	0.4	0.2	0.6	0.2
March.....	-0.2	-2.6 ^r	0.1	0.4 ^r	3.2	0.1 ^r
April.....	0.5 ^r	3.9 ^r	0.1 ^r	0.5 ^r	-1.1 ^r	0.7
May.....	0.9 ^r	6.1 ^r	0.2	0.6	1.6	0.6 ^r
June.....	-0.4	-0.7	-0.3	0.3	-1.0	0.4
June 2016 to 2017.....	1.4	5.1	1.1	0.6	-3.8	1.0
June 2017 to 2018.....	4.3	33.8	1.5	5.3	5.4	5.4

r Revised

Chart 3. One-month percent change in the Export Price Index: June 2017 – June 2018

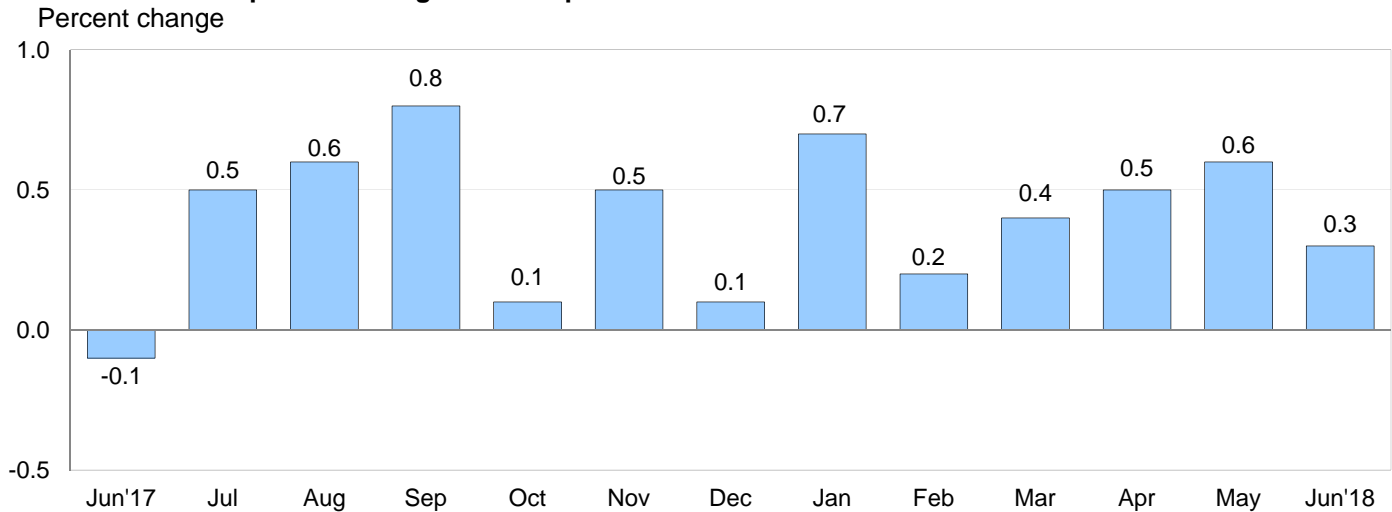
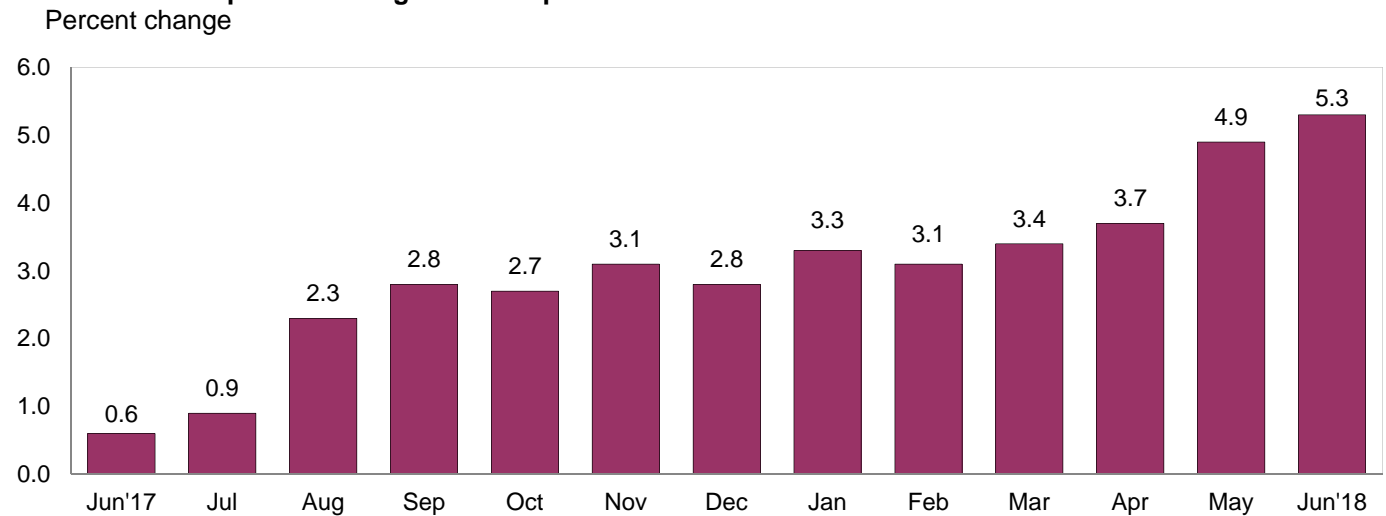


Chart 4. 12-month percent change in the Export Price Index: June 2017 – June 2018



All Exports: U.S. export prices increased 0.3 percent in June, after rising 0.6 percent the previous month. In June, higher nonagricultural prices more than offset decreasing prices for agricultural exports. Prices for overall exports advanced 5.3 percent over the past 12 months, the largest over-the-year increase since the index rose 6.3 percent in October 2011.

Agricultural Exports: Agricultural export prices fell 1.0 percent in June following a 1.6-percent increase in May and a 1.1-percent decrease in April. The largest contributors to the June decline were a 2.6-percent drop in soybeans prices and a 3.1-percent decrease in corn prices. A 6.4-percent rise in fruit prices partially mitigated the overall decrease in agricultural prices. Despite the declines in June and April, export agricultural prices increased 5.4 percent over the past 12 months.

All Exports Excluding Agriculture: The price index for nonagricultural exports increased 0.4 percent in June, after advancing 0.6 percent in May. Nonagricultural prices have not recorded a 1-month decline since the index edged down 0.1 percent in October 2017. In June, rising prices for nonagricultural industrial supplies and materials and capital goods more than offset lower consumer goods and automotive vehicles prices. Overall nonagricultural prices rose 5.4 percent over the past year, the largest 12-month advance for the index since prices increased 5.8 percent in October 2011.

SELECTED JUNE HIGHLIGHTS

Import Prices

Imports by Locality of Origin: Import prices from China recorded no change in June, after a 0.1-percent uptick the previous month. Prices for imports from China increased 0.5 percent over the past year, the largest 12-month advance for the index since a 0.6-percent rise between May 2013 and May 2014. In contrast, the price index for imports from Japan edged down 0.1 percent in June, the first monthly decline since the index fell 0.3 percent in October 2017. Import prices from the European Union, Canada, and Mexico all decreased in June, led in part by lower fuel prices. Prices for imports from the European Union and Canada decreased 0.3 percent, and the price index for imports from Mexico fell 0.5 percent.

Nonfuel Industrial Supplies and Materials: Nonfuel industrial supplies and materials prices increased 0.3 percent in June following a 0.8-percent advance in May. Higher prices for metals and paper drove the June advance.

Finished Goods: Prices for each of the major finished goods areas decreased in June. Consumer goods prices fell 0.3 percent in June, the first monthly decline since the index decreased 0.1 percent in December 2017 and the largest 1-month drop since the index fell 0.3 percent in November 2016. The price indexes for import capital goods and automotive vehicles each declined 0.1 percent in June.

Foods, Feeds, and Beverages: Foods, feeds, and beverages prices fell 2.6 percent in June, the largest monthly decline for the index since a 2.8-percent drop in February 2012. Falling prices for vegetables, fruit, and fish and shellfish all contributed to the decrease in June.

Transportation Services: Import air passenger fares increased 7.3 percent in June, after decreasing 2.5 percent the previous month. The June rise was driven by a 7.9-percent advance in European fares and a 12.6-percent increase in Asian fares. The index for import air passenger fares advanced 4.8 percent over the past year. Prices for import air freight fell 1.0 percent in June and increased 17.1 percent over the past 12 months.

Export Prices

Nonagricultural Industrial Supplies and Materials: Prices for nonagricultural industrial supplies and materials rose 1.3 percent in June following a 1.8-percent advance the previous month. Both increases were led by higher fuel prices which rose 3.2 percent in June and 5.1 percent in May.

Finished Goods: Export finished goods prices were mixed in June. Capital goods prices ticked up 0.1 percent for the second consecutive month in June and have not recorded a monthly decline since the index edged down 0.1 percent in October 2016. In contrast, the price indexes for export consumer goods and automotive vehicles declined 0.1 percent in June.

Transportation Services: Export air passenger fares rose 5.0 percent in June, after declining 0.7 percent in May and 3.7 percent in April. Higher European, Asian, and Latin American/Caribbean fares all contributed to the increase in June. Overall export air passenger fares rose 1.5 percent for the year ended in June. The price index for export air freight recorded no change in June and increased 1.4 percent over the past year.

Import and Export Price Index data for July are scheduled for release on Tuesday, August 14, 2018 at 8:30 a.m. (EDT).

New Locality of Destination and Terms of Trade Data

Beginning with the August news release on September 14, the BLS will introduce two new data series. Locality of Destination price indexes will measure export prices based on the country or region where items are exported. Terms of Trade indexes are based on the country or region and measure the relative price for imports in terms of export prices and are defined as the all-export price index divided by the respective all-import price index. For more information on Terms of Trade indexes, please see “U.S. Import and Export Prices and the Terms of Trade” at www.bls.gov/opub/btn/archive/us-import-and-export-price-indexes-and-the-terms-of-trade.pdf.

The Locality of Destination price indexes will be published at the all-export level and also include a breakdown by manufacturing industries and nonmanufacturing industries where possible. The countries and regions for which indexes will be published include the Industrialized Countries, the European Union, Latin America, the Pacific Rim, Canada, China, Germany, Japan, and Mexico. Indexes by manufacturing industries and nonmanufacturing industries will be available for all countries and regions except Canada and Germany.

Terms of Trade indexes will be available for all countries and regions where both the import Locality of Origin index and the export Locality of Destination index are published. These include the Industrialized Countries, the European Union, Latin America, the Pacific Rim, Canada, China, Germany, Japan, and Mexico.

The data series for both the Locality of Destination price indexes and the Terms of Trade indexes will begin in December 2017 when the indexes are first published on September 14.

In addition to the new indexes, the numbering of the tables in the Import and Export Price Index news release will be changing. Tables 1 through 7 will remain the same, and the new Locality of Destination data will be in table 8 and the new Terms of Trade data will be in table 9. The current table for Selected Transportation Services will change from table 8 to table 10. Other formatting changes to the text of the news release will be made. An example of the new format and tables will be provided before the September 14 release date.

Table 1. U.S. import price indexes and percent changes for selected categories of goods: June 2017 to June 2018

[2000=100, unless otherwise noted]

Description	End Use	Relative importance May 2018 ¹	Index		Percent change				
			May 2018	June 2018	Annual June 2017 to June 2018	Monthly			
						Feb. 2018 to Mar. 2018	Mar. 2018 to Apr. 2018	Apr. 2018 to May 2018	May 2018 to June 2018
All commodities		100.000	128.2	127.7	4.3	-0.2	0.5	0.9	-0.4
All imports excluding food and fuels (Dec. 2010=100)		82.500	100.8	100.7	1.8	0.2	0.1	0.2	-0.1
All imports excluding petroleum		89.177	113.9	113.6	1.4	0.0	0.1	0.1	-0.3
All imports excluding fuels (Dec. 2001=100)		88.567	118.1	117.8	1.5	0.1	0.1	0.2	-0.3
Foods, feeds, & beverages	0	6.066	183.0	178.3	-2.1	-0.9	-0.3	0.4	-2.6
Agricultural foods, feeds & beverages, excluding distilled beverages.....	00	4.763	200.7	195.5	-2.2	-1.4	-0.4	0.7	-2.6
Nonagricultural foods (fish, distilled beverages).....	01	1.303	143.1	139.6	-1.7	0.9	0.1	-0.3	-2.4
Industrial supplies & materials	1	25.906	198.2	198.0	18.8	-0.6	2.0	3.1	-0.1
Industrial supplies & materials excluding petroleum.....		15.140	159.3	159.9	8.0	0.6	0.6	0.1	0.4
Industrial supplies & materials excluding fuels (Dec. 2001=100).....		14.462	182.5	183.1	9.1	1.0	0.6	0.8	0.3
Industrial supplies & materials, durable....		9.263	174.7	175.5	10.7	1.2	0.3	1.4	0.5
Industrial supplies & materials nondurable excluding petroleum.....		5.820	139.9	140.2	3.9	-0.4	0.8	-2.0	0.2
Fuels & lubricants.....	10	11.433	224.3	222.7	33.8	-2.6	3.9	6.1	-0.7
Petroleum & petroleum products.....	100	10.823	248.1	246.2	37.8	-2.4	4.2	7.4	-0.8
Crude.....	10000	7.851	263.4	256.7	42.5	-1.9	5.6	8.4	-2.5
Fuels, n.e.s.-coals & gas.....	101	0.428	85.3	85.9	-16.8	-7.4	-1.0	-16.9	0.7
Gas-natural.....	10110	0.270	62.9	59.1	-27.8	-10.4	-1.9	-24.7	-6.0
Paper & paper base stocks.....	11	0.565	116.7	120.1	11.9	0.4	2.9	0.2	2.9
Materials associated with nondurable supplies & materials.....	12	4.707	162.9	162.7	5.7	0.4	0.8	-0.5	-0.1
Selected building materials.....	13	1.712	162.1	162.3	11.3	3.1	1.0	1.9	0.1
Unfinished metals related to durable goods.....	14	4.009	243.9	245.4	14.6	1.0	0.5	1.6	0.6
Finished metals related to durable goods.....	15	1.827	164.5	164.7	9.5	0.7	-0.4	1.8	0.1
Nonmetals related to durable goods.....	16	1.653	112.2	113.2	3.7	0.7	0.4	0.1	0.9
Capital goods	2	26.472	89.6	89.5	0.6	0.1	0.0	-0.1	-0.1
Electric generating equipment.....	20	3.219	118.2	117.9	1.4	0.0	0.1	0.3	-0.3
Nonelectrical machinery.....	21	21.036	82.1	81.9	0.5	0.2	0.0	-0.1	-0.2
Transportation equipment excluding motor vehicles (Dec. 2001=100).....	22	2.217	135.1	135.0	0.4	-0.1	-0.1	-0.3	-0.1
Automotive vehicles, parts & engines	3	15.649	110.5	110.4	0.0	-0.2	0.0	-0.1	-0.1
Consumer goods, excluding automotives	4	25.907	107.5	107.2	0.3	0.0	0.1	0.1	-0.3
Nondurables, manufactured.....	40	12.698	122.7	122.4	0.6	0.0	0.1	0.4	-0.2
Durables, manufactured.....	41	11.902	93.1	92.9	-0.1	0.2	0.0	-0.2	-0.2
Nonmanufactured consumer goods.....	42	1.306	117.4	114.9	-0.1	-2.6	0.7	0.7	-2.1

¹ Relative importance figures are based on 2016 trade values.

NOTES: Data may be revised in each of the 3 months after original publication.

Dash = Not available

Table 2. U.S. export price indexes and percent changes for selected categories of goods: June 2017 to June 2018

[2000=100, unless otherwise noted]

Description	End Use	Relative importance May 2018 ¹	Index		Percent change				
			May 2018	June 2018	Annual June 2017 to June 2018	Monthly			
						Feb. 2018 to Mar. 2018	Mar. 2018 to Apr. 2018	Apr. 2018 to May 2018	May 2018 to June 2018
All commodities.....		100.000	127.7	128.1	5.3	0.4	0.5	0.6	0.3
Agricultural commodities.....		10.144	186.1	184.3	5.4	3.2	-1.1	1.6	-1.0
All exports excluding food and fuels (Dec. 2010=100).....		80.581	101.8	101.8	3.1	0.2	0.4	0.2	0.0
Nonagricultural commodities.....		89.856	123.3	123.8	5.4	0.1	0.7	0.6	0.4
Foods, feeds, & beverages.....	0	9.442	186.9	185.2	4.9	3.3	-1.2	1.0	-0.9
Agricultural foods, feeds & beverages, excluding distilled beverages.....	00	8.813	185.6	184.1	4.7	3.2	-1.4	1.5	-0.8
Nonagricultural foods (fish, distilled beverages).....	01	0.629	214.3	207.9	8.0	4.0	1.7	-4.7	-3.0
Industrial supplies & materials.....	1	31.816	162.7	164.6	13.2	0.0	1.1	1.8	1.2
Industrial supplies & materials, durable....		10.484	168.3	168.9	7.4	0.5	0.5	0.0	0.4
Industrial supplies & materials, nondurable.....		21.332	160.4	162.8	16.3	-0.3	1.4	2.8	1.5
Agricultural industrial supplies & materials.....	10	1.331	196.4	192.2	10.3	2.8	0.7	2.7	-2.1
Nonagricultural industrial supplies & materials.....		30.485	161.6	163.7	13.3	-0.1	1.1	1.8	1.3
Fuels & lubricants.....	11	9.977	200.1	206.6	28.5	-1.8	2.8	5.1	3.2
Nonagricultural supplies & materials excluding fuels & building materials.....	12	19.489	160.9	161.4	7.5	0.7	0.4	0.2	0.3
Selected building materials.....	13	1.020	124.8	125.8	5.1	0.5	0.6	0.6	0.8
Capital goods.....	2	36.287	109.7	109.8	1.9	0.0	0.6	0.1	0.1
Electrical generating equipment.....	20	3.870	117.1	117.7	4.5	0.5	0.9	0.5	0.5
Nonelectrical machinery.....	21	23.338	94.7	94.7	1.1	-0.1	0.4	0.0	0.0
Transportation equipment excluding motor vehicles (Dec. 2001=100).....	22	9.079	176.2	176.4	3.5	0.2	0.6	0.2	0.1
Automotive vehicles, parts & engines.....	3	10.028	114.3	114.2	0.9	0.1	0.2	0.1	-0.1
Consumer goods, excluding automotives.....	4	12.426	110.0	109.9	1.3	0.0	0.2	0.0	-0.1
Nondurables, manufactured.....	40	6.068	107.0	106.6	2.2	0.3	0.5	-0.1	-0.4
Durables, manufactured.....	41	4.937	107.4	107.6	0.4	-0.1	-0.2	0.0	0.2

¹ Relative importance figures are based on 2016 trade values.

NOTES: Data may be revised in each of the 3 months after original publication.

Dash = Not available

Table 3. U.S. import price indexes and percent changes for selected industries: June 2017 to June 2018
 [December 2005=100, unless otherwise noted]

Description	NAICS	Relative importance May 2018 ¹	Index		Percent change				
			May 2018	June 2018	Annual June 2017 to June 2018	Monthly			
						June 2018 to Mar. 2018	Mar. 2018 to Apr. 2018	Apr. 2018 to May 2018	May 2018 to June 2018
Nonmanufacturing.....		10.378	120.0	115.9	25.2	-2.8	3.5	5.4	-3.4
Agriculture, forestry, fishing and hunting.....	11	2.019	186.0	172.8	-7.9	-4.1	-1.2	0.6	-7.1
Crop production.....	111	1.632	199.3	184.3	-8.6	-5.7	-1.3	1.7	-7.5
Animal production (Dec. 2014=100).....	112	0.198	80.6	75.1	-8.1	0.8	-1.4	1.4	-6.8
Mining.....	21	8.359	113.4	110.6	36.2	-2.5	4.8	6.6	-2.5
Oil and gas extraction.....	211	8.125	113.7	110.7	38.0	-2.6	5.0	6.8	-2.6
Manufacturing.....		89.335	112.6	112.6	2.4	0.0	0.3	0.3	0.0
Manufacturing, part 1.....	31	11.278	125.6	125.3	0.7	0.1	0.2	0.2	-0.2
Food manufacturing.....	311	3.420	158.7	156.5	-0.1	0.2	0.3	0.3	-1.4
Beverage and tobacco product manufacturing.....	312	1.090	121.6	121.8	2.6	0.2	0.6	0.2	0.2
Textile mills (Dec. 2011=100).....	313	0.380	100.2	100.2	2.0	0.1	0.1	-0.3	0.0
Textile product mills.....	314	0.917	110.1	109.8	1.1	0.5	-0.1	0.4	-0.3
Apparel manufacturing.....	315	3.813	111.5	111.8	0.8	-0.1	0.1	0.1	0.3
Leather and allied product manufacturing.....	316	1.657	123.4	123.5	0.3	0.0	0.0	0.5	0.1
Manufacturing, part 2.....	32	18.293	127.9	128.6	7.0	-0.2	0.8	1.0	0.5
Wood product manufacturing.....	321	1.088	147.6	147.5	16.6	4.1	1.2	3.1	-0.1
Paper manufacturing.....	322	1.020	109.6	112.4	6.9	0.3	1.7	0.2	2.6
Printing and related support activities (Dec. 2016=100).....	323	0.208	100.8	103.7	3.7	0.1	0.6	-0.1	2.9
Petroleum and coal products manufacturing.....	324	2.711	99.8	103.9	27.6	-3.0	1.4	4.8	4.1
Chemical manufacturing.....	325	10.107	140.7	140.0	3.2	0.1	0.5	0.4	-0.5
Plastics and rubber products manufacturing.....	326	2.180	119.7	119.6	1.5	0.2	0.4	0.1	-0.1
Nonmetallic mineral product manufacturing.....	327	0.980	130.5	130.5	1.7	0.5	0.2	0.2	0.0
Manufacturing, part 3.....	33	59.763	105.2	105.1	1.4	0.2	0.0	0.1	-0.1
Primary metal manufacturing.....	331	4.579	162.1	162.9	14.6	1.0	0.5	2.1	0.5
Fabricated metal product manufacturing.....	332	3.093	128.4	128.2	4.5	0.6	-0.2	0.3	-0.2
Machinery manufacturing.....	333	6.729	118.9	118.7	1.9	0.3	0.1	0.0	-0.2
Computer and electronic product manufacturing.....	334	16.828	75.3	75.2	-0.9	0.0	0.0	-0.4	-0.1
Electrical equipment, appliance, and component manufacturing.....	335	4.870	116.2	115.9	1.2	0.0	0.2	0.3	-0.3
Transportation equipment manufacturing.....	336	16.613	109.5	109.5	0.1	-0.2	0.0	-0.2	0.0
Furniture and related product manufacturing.....	337	1.757	116.9	117.3	1.7	0.5	-0.1	0.3	0.3
Miscellaneous manufacturing.....	339	5.295	119.1	119.0	1.3	0.3	0.1	0.2	-0.1

¹ Relative importance figures are based on 2016 trade values.

NOTES: Data may be revised in each of the 3 months after original publication.

Dash = Not available

Table 4. U.S. export price indexes and percent changes for selected industries: June 2017 to June 2018
 [December 2005=100, unless otherwise noted]

Description	NAICS	Relative importance May 2018 ¹	Index		Percent change				
			May 2018	June 2018	Annual June 2017 to June 2018	Monthly			
						Feb. 2018 to Mar. 2018	Mar. 2018 to Apr. 2018	Apr. 2018 to May 2018	May 2018 to June 2018
Nonmanufacturing.....		8.599	142.9	145.5	13.2	3.6	-1.5	2.1	1.8
Agriculture, forestry, fishing and hunting.....	11	5.367	164.4	161.7	8.9	5.8	-1.9	1.7	-1.6
Crop production.....	111	4.962	171.2	168.4	9.1	6.1	-2.3	2.5	-1.6
Mining.....	21	3.232	89.5	96.2	20.1	0.0	-0.6	2.6	7.5
Mining (except oil and gas).....	212	1.168	116.3	116.2	15.4	0.9	1.2	2.5	-0.1
Manufacturing.....		89.792	117.2	117.4	4.8	0.1	0.7	0.6	0.2
Manufacturing, part 1.....	31	6.954	141.7	141.4	2.4	0.6	0.1	0.5	-0.2
Food manufacturing.....	311	4.731	159.2	158.9	1.3	0.4	-0.1	0.2	-0.2
Beverage and tobacco product manufacturing.....	312	0.724	127.0	125.5	13.3	1.9	1.5	3.4	-1.2
Textile mills (Dec. 2016=100).....	313	0.632	103.8	104.9	3.7	0.5	0.9	0.0	1.1
Leather and allied product manufacturing (Dec. 2016=100).....	316	0.262	95.6	94.6	-4.3	-0.4	-0.5	-1.0	-1.0
Manufacturing, part 2.....	32	25.541	118.7	119.1	12.5	-0.2	1.3	1.8	0.3
Wood product manufacturing (Dec. 2017=100).....	321	0.545	105.2	106.0	–	1.2	0.9	0.5	0.8
Paper manufacturing.....	322	1.691	130.7	130.8	11.0	0.9	1.7	1.6	0.1
Petroleum and coal products manufacturing.....	324	6.813	121.3	122.4	35.2	-2.8	4.5	6.2	0.9
Chemical manufacturing.....	325	13.214	119.4	119.4	6.2	0.8	0.1	0.2	0.0
Plastics and rubber products manufacturing.....	326	2.210	115.2	115.3	1.1	0.3	0.1	0.2	0.1
Nonmetallic mineral product manufacturing.....	327	0.826	117.0	116.9	3.1	1.1	0.3	0.1	-0.1
Manufacturing, part 3.....	33	57.297	114.1	114.2	2.1	0.1	0.5	0.1	0.1
Primary metal manufacturing.....	331	3.953	147.3	147.8	7.5	0.4	1.2	-0.1	0.3
Fabricated metal product manufacturing.....	332	3.009	140.1	140.2	1.4	-0.1	1.1	0.1	0.1
Machinery manufacturing.....	333	8.875	127.0	127.0	1.2	-0.1	1.0	-0.1	0.0
Computer and electronic product manufacturing.....	334	13.919	83.4	83.2	0.6	-0.2	0.4	0.0	-0.2
Electrical equipment, appliance, and component manufacturing.....	335	3.823	117.5	118.8	5.0	0.6	0.7	0.7	1.1
Transportation equipment manufacturing.....	336	18.015	126.9	127.0	2.1	0.2	0.3	0.2	0.1
Furniture and related product manufacturing (Dec. 2011=100).....	337	0.396	118.7	119.0	1.3	0.0	-0.1	0.0	0.3
Miscellaneous manufacturing.....	339	5.308	120.0	120.5	1.6	-0.1	0.0	-0.1	0.4

¹ Relative importance figures are based on 2016 trade values.

NOTES: Data may be revised in each of the 3 months after original publication.

Dash = Not available

Table 5. U.S. import price indexes and percent changes for selected categories of goods: June 2017 to June 2018

[2000=100, unless otherwise noted]

Description	Harmonized system	Relative importance May 2018 ¹	Index		Percent change				
			May 2018	June 2018	Annual	Monthly			
					June 2017 to June 2018	Feb. 2018 to Mar. 2018	Mar. 2018 to Apr. 2018	Apr. 2018 to May 2018	May 2018 to June 2018
Live animals; animal products.....	I	1.387	198.0	191.5	-3.4	1.1	-0.9	0.3	-3.3
Meat and edible meat offal.....	02	0.376	251.7	250.1	-1.9	0.7	-1.3	0.8	-0.6
Fish and crustaceans, molluscs and other aquatic invertebrates.....	03	0.718	144.6	137.3	-4.6	1.4	-0.1	0.2	-5.0
Vegetable products.....	II	1.982	217.9	202.3	-9.1	-5.5	-1.9	1.0	-7.2
Edible vegetables, roots, and tubers.....	07	0.410	424.8	357.4	-23.6	-10.5	-10.1	-2.2	-15.9
Edible fruit and nuts; peel of citrus fruit or melons.....	08	0.853	131.6	125.1	-7.1	-3.7	0.7	2.3	-4.9
Coffee, tea, mate and spices.....	09	0.338	217.5	218.0	-3.8	0.2	-0.6	0.8	0.2
Animal or vegetable fats and oils (Dec. 2009=100).....	III	0.273	104.9	100.2	-13.0	-2.2	-2.1	-3.0	-4.5
Prepared foodstuffs, beverages, and tobacco.....	IV	2.805	167.8	167.3	4.1	0.7	1.5	0.5	-0.3
Sugars and sugar confectionary (Dec. 2012=100).....	17	0.194	88.1	88.0	1.6	-0.9	-1.0	-0.9	-0.1
Cocoa and cocoa preparations (Dec. 2009=100).....	18	0.214	103.7	101.5	5.3	4.7	1.7	2.3	-2.1
Preparations of vegetables, fruit, nuts, or other parts of plants.....	20	0.363	170.0	171.3	3.9	0.7	-0.4	0.9	0.8
Miscellaneous edible preparations (Dec. 2017=100).....	21	0.204	102.0	102.0	-	0.8	0.1	0.0	0.0
Beverages, spirits, and vinegar.....	22	1.033	131.8	132.0	2.8	0.3	0.6	0.2	0.2
Mineral products.....	V	11.234	224.1	222.7	33.7	-2.4	3.9	6.2	-0.6
Mineral fuels, oils and residuals, bituminous substances and mineral waxes.....	27	10.983	222.0	220.6	34.7	-2.6	4.1	6.3	-0.6
Products of the chemical or allied industries.....	VI	9.435	158.0	157.1	3.4	0.0	0.4	0.2	-0.6
Inorganic chemicals.....	28	0.590	301.9	300.0	7.1	-1.1	1.6	-4.3	-0.6
Organic chemicals.....	29	2.406	132.8	132.4	7.1	0.0	1.4	0.5	-0.3
Pharmaceutical products.....	30	4.443	152.4	151.0	1.2	-0.2	0.2	0.7	-0.9
Fertilizers (Dec. 2009=100).....	31	0.261	81.9	82.3	12.3	-0.1	-0.1	2.4	0.5
Tanning extracts; dye, pigments, varnish, paints & putty (Dec. 2011=100).....	32	0.181	107.2	108.0	-0.6	0.3	-0.2	-0.2	0.7
Essential oils and resinoids (Dec. 2016=100).....	33	0.574	103.3	102.6	3.3	0.2	-0.2	-0.3	-0.7
Miscellaneous chemical products.....	38	0.632	107.0	107.0	3.0	1.4	-0.5	-0.2	0.0
Plastics and articles thereof; rubber and articles thereof.....	VII	3.374	140.9	141.6	1.6	0.1	0.1	-0.1	0.5
Plastics and articles thereof.....	39	2.211	143.2	144.5	2.5	0.1	-0.2	-0.1	0.9
Rubber and articles thereof.....	40	1.164	138.2	137.8	-0.2	0.2	0.5	-0.3	-0.3
Raw hides, skins, leather, furskins, travel goods, etc.....	VIII	0.633	125.9	125.9	1.9	0.2	0.0	1.1	0.0
Articles of leather; travel goods, bags, etc. of various materials.....	42	0.599	131.6	131.5	2.1	0.2	0.1	1.2	-0.1
Wood, wood charcoal, cork, straw, basketware and wickerwork.....	IX	1.123	179.7	179.7	16.5	4.4	1.2	3.0	0.0
Wood and articles of wood; wood charcoal (Dec. 2014=100).....	44	1.100	124.3	124.3	16.9	4.5	1.3	3.1	0.0
Woodpulp, recovered paper, and paper products.....	X	1.079	116.0	118.8	7.5	0.3	1.8	0.3	2.4
Paper and paperboard; articles of paper pulp, paper or paperboard.....	48	0.708	107.0	109.0	5.8	0.2	1.3	0.3	1.9

See footnotes at end of table.

Table 5. U.S. import price indexes and percent changes for selected categories of goods: June 2017 to June 2018 — Continued

[2000=100, unless otherwise noted]

Description	Harmonized system	Relative importance May 2018 ¹	Index		Percent change				
			May 2018	June 2018	Annual June 2017 to June 2018	Monthly			
						Feb. 2018 to Mar. 2018	Mar. 2018 to Apr. 2018	Apr. 2018 to May 2018	May 2018 to June 2018
Printed matter (Dec. 2015=100).....	49	0.205	106.7	110.6	4.3	0.0	0.8	-0.1	3.7
Textile and textile articles.....	XI	4.965	114.4	114.5	1.2	0.3	0.1	0.0	0.1
Articles of apparel and clothing accessories, knitted or crocheted.....	61	1.985	104.1	104.4	0.9	-0.1	0.0	0.1	0.3
Articles of apparel and clothing accessories, not knitted or crocheted.....	62	1.677	119.5	120.0	0.9	0.1	0.1	0.1	0.4
Made-up or worn textile articles.....	63	0.632	104.2	103.9	0.2	0.1	0.0	0.0	-0.3
Headgear, umbrellas, artificial flowers, etc.....	XII	1.366	122.0	122.3	0.0	0.2	0.0	0.0	0.2
Footwear and parts of such articles.....	64	1.142	120.8	121.2	-0.2	0.0	0.0	0.0	0.3
Stone, plaster, cement, asbestos, ceramics, glass etc.....	XIII	0.920	132.2	132.2	1.7	0.7	0.2	0.1	0.0
Articles of stone, plaster, cement, asbestos, or mica (Dec. 2015=100).....	68	0.330	99.7	100.4	4.0	1.4	0.1	0.2	0.7
Ceramic products.....	69	0.254	135.2	135.1	-0.7	-0.1	0.4	0.1	-0.1
Glass and glassware.....	70	0.335	132.3	131.4	1.1	0.5	0.0	-0.1	-0.7
Pearls, stones, precious metals, imitation jewelry, and coins.....	XIV	3.045	173.8	174.2	2.1	-0.2	-0.1	-0.4	0.2
Base metals and articles of base metals. ...	XV	5.699	185.0	185.9	11.4	1.0	0.4	1.9	0.5
Iron and steel.....	72	1.359	231.4	230.8	17.5	2.6	3.7	1.5	-0.3
Articles of iron or steel.....	73	1.601	153.1	153.6	6.7	1.1	-0.2	0.3	0.3
Copper and articles thereof.....	74	0.438	319.0	328.6	23.5	-1.0	-1.6	8.0	3.0
Aluminum and articles thereof.....	76	0.972	144.0	144.0	12.1	1.0	-1.7	5.1	0.0
Tools, implements, cutlery, spoons and forks, of base metal; parts thereof.....	82	0.415	123.1	122.9	0.4	0.4	0.0	0.2	-0.2
Miscellaneous articles of base metal.....	83	0.513	137.6	136.9	0.3	0.1	0.1	0.1	-0.5
Machinery, electrical equipment, TV image and sound recorders, parts, etc.....	XVI	28.634	80.7	80.5	0.1	0.1	0.0	-0.1	-0.2
Machinery and mechanical appliances; parts thereof.....	84	14.021	87.0	86.9	1.3	0.2	0.0	-0.1	-0.1
Electrical machinery and equip, sound and TV recorders & reproducers, parts.....	85	14.613	74.8	74.6	-0.9	0.0	0.0	-0.1	-0.3
Vehicles, aircraft, vessels and associated transport equipment.....	XVII	13.858	114.3	114.3	0.2	-0.2	0.0	-0.2	0.0
Motor vehicles and their parts.....	87	12.671	113.4	113.3	0.2	-0.2	0.0	0.0	-0.1
Aircraft, spacecraft, and parts thereof (Dec. 2002=100).....	88	1.097	115.5	115.6	-0.3	-0.1	0.1	-0.8	0.1
Optical, photo, measuring, medical & musical instruments; & timepieces.....	XVIII	3.836	103.1	102.8	1.4	0.1	-0.2	-0.2	-0.3
Optical, photographic, measuring and medical instruments.....	90	3.548	99.6	99.4	1.4	-0.1	-0.2	-0.2	-0.2
Clocks and watches and parts thereof.....	91	0.228	143.8	141.5	-0.7	2.8	-0.7	-1.2	-1.6
Miscellaneous manufactured articles.....	XX	4.265	112.2	112.4	1.4	0.2	0.1	0.3	0.2
Furniture & stuffed furnishings; lamps & lighting fittings, nesoi; prefab bldgs.....	94	2.688	118.1	118.2	1.5	0.3	0.0	0.3	0.1
Toys, games and sports equipment; parts and accessories thereof.....	95	1.297	102.6	102.6	1.2	0.1	0.2	0.5	0.0
Miscellaneous manufactured articles.....	96	0.279	128.6	128.9	-0.6	0.0	0.0	0.0	0.2

¹ Relative importance figures are based on 2016 trade values.

NOTES: Data may be revised in each of the 3 months after original publication.

Dash = Not available

Table 6. U.S. export price indexes and percent changes for selected categories of goods: June 2017 to June 2018

[2000=100, unless otherwise noted]

Description	Harmoni- zied system	Relative importance May 2018 ¹	Index		Percent change				
			May 2018	June 2018	Annual	Monthly			
					June 2017 to June 2018	Feb. 2018 to Mar. 2018	Mar. 2018 to Apr. 2018	Apr. 2018 to May 2018	May 2018 to June 2018
Live animals; animal products.....	I	1.929	209.2	208.0	0.4	1.2	0.2	-1.0	-0.6
Meat & edible meat offal (Dec. 2006=100)...	02	1.168	166.2	164.5	-1.5	0.7	-0.8	-0.8	-1.0
Fish and crustaceans, mollusks and aquatic invertebrates (Dec. 2016=100).....	03	0.415	118.1	114.3	10.6	4.0	2.1	-5.3	-3.2
Dairy products, eggs and honey (Dec. 2017=100).....	04	0.270	99.4	103.9	-	-0.1	1.0	4.6	4.5
Vegetable products.....	II	4.953	206.3	203.6	8.8	5.7	-2.1	2.1	-1.3
Edible fruit and nuts; peel of citrus fruit or melons.....	08	0.875	139.4	143.3	7.6	1.8	-1.1	-5.6	2.8
Cereals.....	10	1.556	208.4	202.8	14.3	4.8	-1.8	5.5	-2.7
Oilseeds and misc. grains, seeds, fruits, plants, straw and fodder.....	12	2.068	217.0	212.3	11.5	6.6	-1.7	1.6	-2.2
Prepared foodstuffs, beverages, and tobacco.....	IV	3.120	154.8	153.9	4.2	1.0	-0.3	1.3	-0.6
Preparations of vegetables, fruit, nuts or other parts of plants (Dec. 2009=100)....	20	0.346	118.4	118.2	1.0	0.3	0.1	0.1	-0.2
Miscellaneous edible preparations (Dec. 2017=100).....	21	0.564	97.3	97.9	-	-1.7	-3.8	0.0	0.6
Beverages, spirits, and vinegar (Dec. 2008=100).....	22	0.537	111.0	110.7	-0.4	1.8	0.6	1.4	-0.3
Residues and waste from the food industries; prepared animal feed.....	23	0.784	234.5	229.0	19.0	4.8	1.6	4.3	-2.3
Mineral products.....	V	10.365	240.7	248.4	30.2	-1.8	2.6	5.0	3.2
Ores, slag and ash (Dec. 2012=100).....	26	0.552	110.0	109.8	22.0	-0.4	-1.8	-0.6	-0.2
Mineral fuels, oils and residuals, bituminous substances and mineral waxes.....	27	9.638	231.5	239.5	31.3	-1.9	3.0	5.4	3.5
Products of the chemical or allied industries.....	VI	10.681	138.6	138.2	4.1	0.5	-0.3	0.1	-0.3
Inorganic chemicals.....	28	0.736	166.7	166.8	4.1	0.4	0.0	-0.6	0.1
Organic chemicals.....	29	2.469	141.2	141.5	9.1	1.2	-2.5	0.0	0.2
Pharmaceutical products.....	30	3.218	108.0	107.1	2.2	0.3	0.5	0.1	-0.8
Fertilizers (Dec. 2016=100).....	31	0.260	122.5	120.3	11.6	1.0	3.2	0.5	-1.8
Tanning or dyeing extracts, dyes, paints varnish, putty, & inks (Dec. 2015=100)....	32	0.530	102.7	102.3	1.9	0.4	0.5	1.2	-0.4
Essential oils and resinoids; perfumery cosmetic or toilet preparations.....	33	0.802	130.4	130.9	-1.3	0.2	0.5	-0.8	0.4
Soap; lubricants; waxes, polishing or scouring products; candles, pastes.....	34	0.488	119.2	119.4	6.1	0.7	0.3	-0.3	0.2
Miscellaneous chemical products.....	38	1.796	152.3	152.1	5.7	0.2	0.5	0.3	-0.1
Plastics and articles thereof; rubber and articles thereof.....	VII	5.150	144.4	144.9	5.7	1.3	0.5	0.1	0.3
Plastics and articles thereof.....	39	4.266	140.7	141.3	6.7	1.1	0.5	0.0	0.4
Rubber and articles thereof.....	40	0.884	159.2	159.2	1.4	2.3	0.3	1.0	0.0
Wood, wood charcoal, cork, straw, baskets and wickerwork (Dec. 2014=100).....	IX	0.687	107.3	108.0	12.3	1.0	0.6	0.8	0.7
Woodpulp, recovered paper, and paper products.....	X	2.070	132.8	133.7	4.5	-0.2	2.9	1.8	0.7
Woodpulp and recovered paper.....	47	0.640	140.1	142.6	-0.8	-1.4	4.8	3.5	1.8
Paper and paperboard; articles of paper pulp, paper or paperboard.....	48	1.097	129.2	129.0	7.1	0.2	2.0	1.5	-0.2
Printed material (Dec. 2014=100).....	49	0.333	107.5	108.4	6.8	0.0	2.9	0.0	0.8
Textile and textile articles.....	XI	1.702	126.9	126.2	5.0	2.4	0.1	1.2	-0.6

See footnotes at end of table.

Table 6. U.S. export price indexes and percent changes for selected categories of goods: June 2017 to June 2018 — Continued

[2000=100, unless otherwise noted]

Description	Harmonized system	Relative importance May 2018 ¹	Index		Percent change				
			May 2018	June 2018	Annual	Monthly			
					June 2017 to June 2018	Feb. 2018 to Mar. 2018	Mar. 2018 to Apr. 2018	Apr. 2018 to May 2018	May 2018 to June 2018
Cotton, including yarns and woven fabrics thereof.....	52	0.487	145.4	141.6	11.1	6.8	0.3	2.8	-2.6
Stone, plaster, cement, asbestos, ceramics, glass etc.....	XIII	0.799	124.2	124.2	1.2	0.2	0.1	0.1	0.0
Articles of stone, plaster, cement, asbestos, or mica (Dec. 2015=100).....	68	0.268	102.2	102.1	1.0	0.3	0.2	0.1	-0.1
Glass and glassware.....	70	0.408	99.3	99.3	0.7	0.1	0.1	0.0	0.0
Pearls, stones, precious metals, imitation jewelry, and coins.....	XIV	4.048	238.4	238.8	2.3	-0.4	0.2	-0.9	0.2
Base metals and articles of base metals. . .	XV	4.986	164.2	165.1	9.1	0.9	1.2	0.2	0.5
Iron and steel.....	72	1.124	182.1	182.2	18.6	4.2	4.2	-0.1	0.1
Copper and articles thereof.....	74	0.555	197.2	206.6	23.3	-1.3	-0.7	-1.8	4.8
Aluminum and articles thereof.....	76	0.989	123.9	123.8	11.2	0.6	-1.6	2.8	-0.1
Tools, implements, cutlery, spoons and forks, of base metal (Dec. 2015=100). . . .	82	0.313	99.9	99.9	0.4	0.0	0.3	0.0	0.0
Miscellaneous articles of base metal.....	83	0.340	152.4	153.0	3.4	0.3	0.5	0.3	0.4
Machinery, electrical equipment, TV image and sound recorders, parts, etc.....	XVI	27.351	97.5	97.6	1.6	0.0	0.5	0.2	0.1
Machinery and mechanical appliances; parts thereof.....	84	15.698	115.0	115.0	1.1	0.0	0.7	0.1	0.0
Electrical machinery and equipment and parts and accessories thereof.....	85	11.653	78.7	78.8	2.3	-0.1	0.5	0.4	0.1
Vehicles, aircraft, vessels and associated transport equipment.....	XVII	14.185	135.2	135.2	1.9	0.1	0.2	0.1	0.0
Motor vehicles and their parts.....	87	8.240	116.4	116.3	1.0	0.1	0.2	0.1	-0.1
Optical, photo, measuring, medical & musical instruments; & timepieces.....	XVIII	5.916	109.4	109.3	2.8	0.2	-0.1	0.1	-0.1
Miscellaneous manufactured articles.....	XX	1.382	112.1	112.1	-0.3	0.0	0.0	-0.2	0.0
Furniture; stuffed furnishings; lamps and lighting fittings nesoi;.....	94	0.807	128.5	128.6	0.2	0.0	-0.1	-0.3	0.1
Toys, games and sports equipment; parts and accessories thereof.....	95	0.414	87.5	87.5	-1.4	-0.1	-0.3	-0.1	0.0

¹ Relative importance figures are based on 2016 trade values.

NOTES: Data may be revised in each of the 3 months after original publication.

Dash = Not available

Table 7. U.S. import price indexes and percent changes by locality of origin: June 2017 to June 2018
 [2000=100, unless otherwise noted]

Description	Relative importance May 2018 ¹	Index		Percent change				
		May 2018	June 2018	Annual	Monthly			
				June 2017 to June 2018	Feb. 2018 to Mar. 2018	Mar. 2018 to Apr. 2018	Apr. 2018 to May 2018	May 2018 to June 2018
Industrialized Countries²	100.000	126.2	125.8	5.6	-0.2	0.8	1.2	-0.3
Nonmanufacturing.....	9.368	166.4	161.5	22.4	-2.9	5.1	8.3	-2.9
Manufacturing.....	90.076	122.3	122.3	3.9	0.1	0.4	0.5	0.0
Canada	100.000	137.1	136.7	10.7	-0.5	1.5	3.1	-0.3
Nonmanufacturing.....	24.871	159.2	153.7	22.3	-2.9	5.3	9.0	-3.5
Manufacturing.....	74.187	134.7	135.6	6.9	0.2	0.4	1.4	0.7
European Union³	100.000	137.8	137.4	3.5	0.0	0.6	0.4	-0.3
Manufacturing.....	98.905	134.1	133.8	3.3	0.0	0.5	0.3	-0.2
France (Dec. 2003=100)	100.000	129.2	128.6	5.0	0.0	0.2	0.4	-0.5
Germany (Dec. 2003=100)	100.000	112.4	112.1	-1.8	-0.2	0.4	0.0	-0.3
United Kingdom (Dec. 2003=100)	100.000	121.9	122.2	3.9	0.4	0.2	0.4	0.2
Latin America⁴	100.000	152.3	150.9	5.8	-0.7	0.6	1.0	-0.9
Nonmanufacturing.....	19.531	277.2	267.2	22.6	-3.6	3.0	4.7	-3.6
Manufacturing.....	80.199	123.1	122.8	2.2	0.0	0.1	0.1	-0.2
Mexico (Dec. 2003=100)	100.000	129.2	128.6	1.5	-0.2	-0.1	0.4	-0.5
Nonmanufacturing (Dec. 2008=100).....	9.093	139.5	132.2	6.6	-1.2	0.1	4.7	-5.2
Manufacturing (Dec. 2008=100).....	90.659	88.8	88.8	0.9	-0.2	-0.1	0.0	0.0
Pacific Rim (Dec. 2003=100)⁵	100.000	99.3	99.3	0.9	0.2	0.3	0.1	0.0
China (Dec. 2003=100)	100.000	100.5	100.5	0.5	0.2	0.0	0.1	0.0
Japan	100.000	96.5	96.4	0.1	0.2	0.1	0.0	-0.1
Asian NICs⁶	100.000	89.6	89.5	3.9	0.5	0.5	0.4	-0.1
ASEAN (Dec. 2003=100)⁷	100.000	98.7	98.6	0.6	0.0	0.2	0.2	-0.1
Asia Near East (Dec. 2003=100)⁸	100.000	185.4	183.0	22.9	-0.2	1.3	2.1	-1.3

¹ Relative importance figures are based on 2016 trade values.

² Western Europe, Canada, Japan, Australia, New Zealand, and South Africa.

³ European Union countries.

⁴ Mexico, Central America, South America, and the Caribbean.

⁵ China, Japan, Australia, Brunei, Indonesia, Macao, Malaysia, New Zealand, Papua New Guinea, Philippines, and the Asian Newly Industrialized Countries.

⁶ Asian Newly Industrialized Countries - Hong Kong, Singapore, South Korea, and Taiwan.

⁷ Association of Southeast Asian Nations - Brunei, Cambodia, Indonesia, Laos, Malaysia, Myanmar, Philippines, Singapore, Thailand, and Vietnam.

⁸ Bahrain, Iran, Iraq, Israel, Jordan, Kuwait, Lebanon, Oman, Qatar, Saudi Arabia, Syria, United Arab Emirates, and Yemen.

NOTES: Data may be revised in each of the 3 months after original publication.

Regions are not mutually exclusive.

Dash = Not available

Table 8. U.S. international price indexes and percent changes for selected transportation services: June 2017 to June 2018

[2000=100, unless otherwise noted]

Description	Relative importance May 2018 ¹	Index		Percent change				
		May 2018	June 2018	Annual	Monthly			
				June 2017 to June 2018	Feb. 2018 to Mar. 2018	Mar. 2018 to Apr. 2018	Apr. 2018 to May 2018	May 2018 to June 2018
Air Freight								
Import Air Freight	100.000	194.8	192.9	17.1	4.1	6.9	1.7	-1.0
Europe (Dec. 2003=100).....	24.037	154.3	149.4	7.5	0.9	1.3	1.3	-3.2
Asia.....	64.148	189.0	188.4	24.0	6.6	10.2	2.2	-0.3
Export Air Freight	100.000	164.1	164.1	1.4	2.0	0.3	0.7	0.0
Europe (Dec. 2006=100).....	32.716	147.8	148.9	1.4	-0.5	0.9	0.0	0.7
Inbound Air Freight	100.000	175.7	175.3	13.0	1.7	4.7	1.5	-0.2
Europe (Dec. 2003=100).....	25.808	140.0	136.9	4.8	0.8	-0.1	1.2	-2.2
Asia.....	59.169	166.5	167.4	16.4	2.6	7.7	2.0	0.5
Outbound Air Freight	100.000	140.2	139.6	-1.0	3.4	-0.1	-1.4	-0.4
Europe (Dec. 2003=100).....	33.993	148.6	148.9	2.4	2.4	0.2	0.4	0.2
Asia.....	41.986	132.0	131.2	-4.5	5.8	-0.4	-3.7	-0.6
Air Passenger Fares								
Import Air Passenger Fares	100.000	177.4	190.4	4.8	-6.5	2.8	-2.5	7.3
Europe.....	42.432	202.9	218.9	10.9	-14.6	4.9	-5.0	7.9
Asia.....	24.090	139.4	157.0	3.9	0.1	2.9	6.1	12.6
Latin America/Caribbean.....	9.218	153.7	160.7	-1.2	2.3	-0.3	-8.0	4.6
Export Air Passenger Fares	100.000	151.4	158.9	1.5	3.5	-3.7	-0.7	5.0
Europe.....	30.539	199.8	212.5	2.3	2.2	-5.2	-0.1	6.4
Asia.....	25.776	127.4	136.3	6.3	2.1	-5.5	2.2	7.0
Latin America/Caribbean.....	23.772	156.8	163.1	1.6	0.1	-1.1	-5.3	4.0

¹ Relative importance figures are based on 2016 trade values.

NOTES: Data may be revised in each of the 3 months after original publication.

Dash = Not available

TECHNICAL NOTE

Import and Export Merchandise and Services Price Indexes - All indexes use a modified Laspeyres formula and are not seasonally adjusted. Price indexes are reweighted annually, with a 2-year lag in the weights. Published series use a base year of 2000=100 where possible. More detailed index series and additional information may be obtained at www.bls.gov/mxp or by calling (202) 691-7101.

Merchandise Goods Classification Systems - The merchandise price indexes are published using three classification systems. Items are classified by end use according to the Bureau of Economic Analysis Classification System, by industry according to the North American Industry Classification System (NAICS), and by product category according to the Harmonized System (HS). While classification by end use and product category are self-explanatory, some notes are in order for classifying items by industry. In the NAICS imports and exports tables, items are classified by output industry, not input industry. As an example, NAICS import index 326 (plastics and rubber products manufacturing) includes outputs such as manufactured plastic rather than inputs such as petroleum. The NAICS classification structure also matches the classification system used by the Producer Price Index (PPI) to produce the NAICS primary products indexes.

Import Price Indexes - Products have been classified by the Harmonized Tariff Schedule of the United States Annotated (TSUSA). Import prices are based on U.S. dollar prices paid by the U.S. importer. The prices are generally either "free on board" (f.o.b.) foreign port or "cost, insurance, and freight" (c.i.f.) U.S. port transaction prices, depending on the practices of the individual industry. The index for crude petroleum is calculated from data collected by the U.S. Department of Energy.

Export Price Indexes - Products have been classified by the Harmonized Schedule B classification system of the U.S. Bureau of the Census. The prices used are generally either "free alongside ship" (f.a.s.) factory or "free on board" (f.o.b.) transaction prices, depending on the practices of the individual industry. Prices used in the grain index, excluding rice, are obtained from the U.S. Department of Agriculture.

Services Price Indexes - Indexes for import and export air passenger fares calculate changes in the average revenue received per passenger by foreign carriers from U.S. residents and by U.S. carriers from foreign residents, respectively. Data are obtained from an airline consulting service and report on tickets sold by travel agencies, travel websites, and directly by the airlines. Taxes and fees are included in both the import and export air passenger fares indexes. Import air passenger fares data have used the airline consulting service source since September 2008. Before April 2018, the export air passenger fares data were collected directly by BLS from U.S. airlines. The air freight indexes are calculated from data collected directly from airlines. These data exclude mail and passenger baggage. The scope of the service being priced is the movement of freight from airport to airport only, and does not include any ground transportation or port service. The air freight indexes are presented using two definitions: balance of payments (which represents transactions between U.S. and foreign residents) and international (which represents transactions inbound to and outbound from the United States.) Fact sheets specifying detailed information for each services industry are available at www.bls.gov/mxp under "MXP Publications."

Import Indexes by Locality of Origin - Prices used in these indexes are a subset of the data collected for the import price indexes. Beginning with January 2002, the indexes are defined by locality of origin using a nomenclature based upon the North American Industry Classification System (NAICS). Nonmanufactured goods are defined as NAICS 11 and 21, and manufactured goods are defined as NAICS 31–33.

Relative Importance - A relative importance is a specific index's price-updated value share (expressed as a percentage) of overall imports or exports at a specific point in time. Relative importance values are affected by the trade weights at the point indexes are reweighted and index changes relative to other indexes since the reweight point. If an index is rising in value relative to other indexes over time, the relative importance will increase as well.

Revision Policy - To reflect the availability of late reports and corrections by respondents, monthly data may be revised in each of the 3 months after original publication. After 3 months, no further data revisions take place. For example, data first published in the January release will be subject to revision in the releases for February, March, and April.

Rounding Policy - Index values are rounded to the tenth decimal place after being calculated. All percent changes are then derived from the rounded index values and subsequently rounded to the tenth decimal place.

Uses of the Data - The primary use of the indexes is to deflate trade statistics, notably the foreign trade sector of the National Income and Product Accounts (NIPA) constructed by the Department of Commerce. Other published indexes are useful for general market analysis. For trade in international services, balance of payments indexes are used for deflating NIPA, while international indexes are more appropriate for market analysis. Merchandise and services indexes also can be used to study U.S. competitiveness and to compute price elasticities, and the merchandise import indexes by country or region of origin are useful in terms of trade analysis.

Email Subscription - The U.S. import and export price indexes news release is available through an email subscription service at www.bls.gov/bls/list.htm.

Additional Information - More detailed data are available on the Import/Export Price Indexes home page at www.bls.gov/mxp. For import and export price indexes data requests, send an email to mxpinfo@bls.gov.

Information from this release will be made available to sensory impaired individuals upon request. Voice phone: (202)-691-5200; Federal Relay Service: 1-(800)-877-8339.