

NEWS RELEASE

BUREAU OF LABOR STATISTICS
U. S. D E P A R T M E N T O F L A B O R



Transmission of material in this release is embargoed until
8:30 a.m. (EDT) Thursday, May 14, 2020

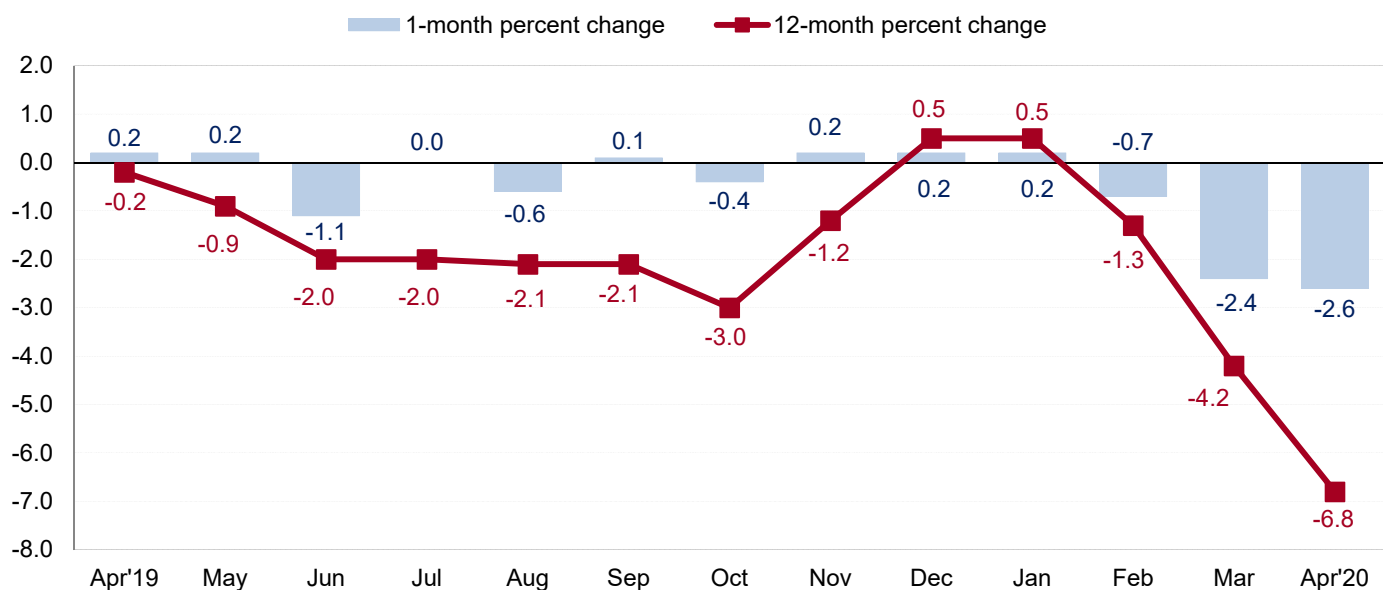
USDL-20-0921

Technical information: (202) 691-7101 • MXPinfo@bls.gov • www.bls.gov/mxp
Media contact: (202) 691-5902 • PressOffice@bls.gov

U.S. IMPORT AND EXPORT PRICE INDEXES – APRIL 2020

U.S. import prices declined 2.6 percent in April, the U.S. Bureau of Labor Statistics reported today, following a 2.4-percent decrease in March. Both monthly declines were led by falling fuel prices. Prices for U.S. exports fell 3.3 percent in April, after decreasing 1.7 percent the previous month.

Chart 1. One-month and 12-month percent changes in the Import Price Index: April 2019 – April 2020



Imports

U.S. import prices fell 2.6 percent in April, the largest monthly drop since the index declined 3.2 percent in January 2015. The April decrease followed a 2.4-percent drop in March and a 0.7-percent decline in February. Prices for U.S. imports also fell on a 12-month basis, decreasing 6.8 percent for the year ended in April. The decrease was the largest 12-month drop since the index declined 8.3 percent from December 2014 to December 2015. (See table 1.)

Coronavirus (COVID-19) Pandemic Impact on April 2020 Import and Export Price Index Data

The Bureau of Labor Statistics did not make any changes to either the collection method or estimation methodology for the April release of U.S. Import and Export Price Indexes. Survey response rates for April were 6.5 percentage points lower than those in April 2019. A small number of indexes that are normally published were not published in April. Additional information is available at www.bls.gov/bls/import-export-price-indexes-covid19-impacts-april-2020.htm.

Fuel Imports: Import fuel prices declined 31.5 percent in April, after decreasing 26.0 percent in March. The April decline was the largest 1-month drop since the index was first published monthly in September 1992. The decline in fuel prices was led by a 33.0-percent drop in the price index for import petroleum; natural gas prices also fell in April, decreasing 3.3 percent. Prices for import fuel declined 56.6 percent from April 2019 to April 2020, the largest 12-month drop since the index was first published in December 1984. Petroleum prices declined 58.5 percent over the past year, and more than offset a 5.9-percent advance in natural gas prices.

All Imports Excluding Fuel: Prices for imports excluding fuel fell 0.5 percent in April following no change the previous month. In April, the drop was driven by lower prices for industrial supplies and materials; foods, feeds, and beverages; and consumer goods, which more than offset rising prices for automotive vehicles and capital goods. Nonfuel import prices declined 1.0 percent over the past 12 months.

Nonfuel Industrial Supplies and Materials: Nonfuel industrial supplies and materials prices declined 3.2 percent in April, after rising 0.2 percent in March. The April decrease was led by lower prices for unfinished metals, selected building materials, and chemicals.

Finished Goods: Finished goods prices were mixed in April. Automotive vehicles prices rose 0.4 percent, driven by higher prices for passenger cars. Prices for capital goods ticked up 0.1 percent and have not declined since November. Despite the recent advances, prices for import capital goods fell 0.7 percent over the past 12 months. In contrast, the price index for consumer goods declined 0.2 percent in April.

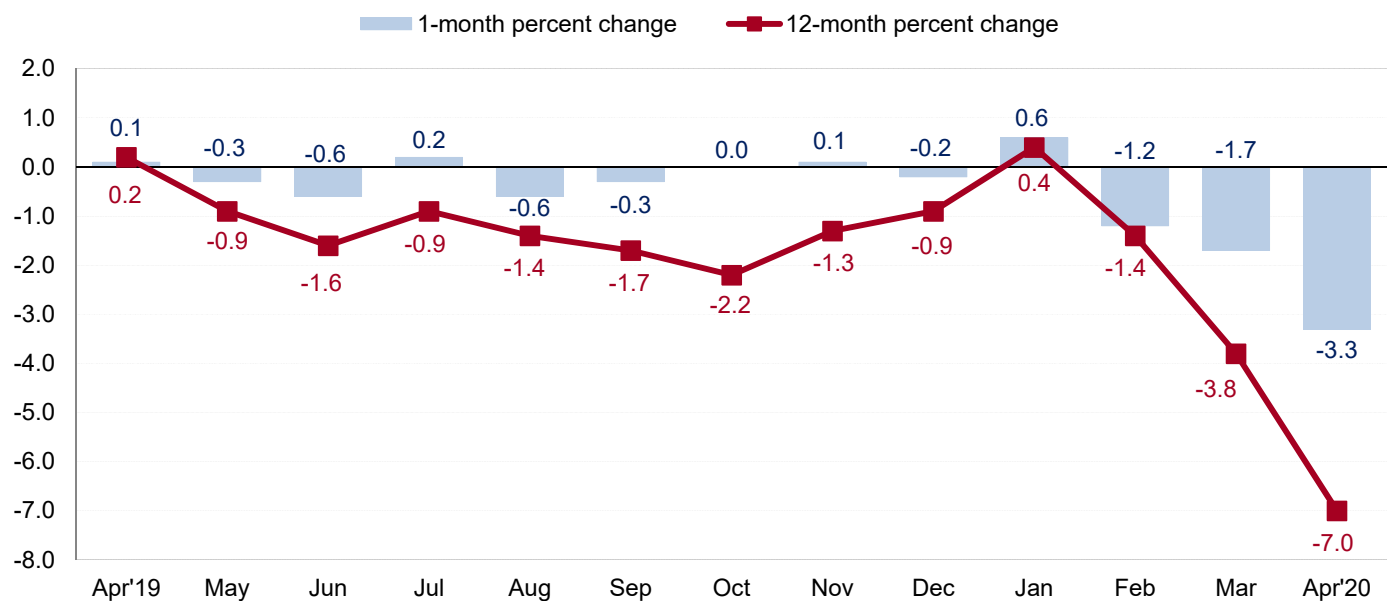
Foods, Feeds, and Beverages: Prices for foods, feeds, and beverages fell 1.3 percent in April, after declining 1.0 percent the previous month. The April drop was led by lower prices for fruit, meat, and food oils.

Table A. Percent change in Import and Export Price Indexes, selected categories

Month	IMPORTS			EXPORTS		
	All imports	Fuel imports	Nonfuel imports	All exports	Agricultural exports	Non-agricultural exports
2019						
April.....	0.2	1.9	-0.1	0.1	-1.4	0.2
May.....	0.2	3.6	-0.3	-0.3	-1.1	-0.2
June.....	-1.1	-7.8	-0.3	-0.6	2.4	-0.9
July.....	0.0	0.1	0.0	0.2	0.2	0.2
August.....	-0.6	-4.2	-0.1	-0.6	-2.4	-0.3
September.....	0.1	1.0	-0.1	-0.3	-1.6	-0.2
October.....	-0.4	-1.6	-0.3	0.0	1.7	-0.2
November.....	0.2	2.2	-0.1	0.1	2.4	-0.1
December.....	0.2	1.3	0.1	-0.2	-0.1	-0.2
2020						
January.....	0.2	-0.1	0.3	0.6	2.0 ^r	0.6
February.....	-0.7	-9.1 ^r	0.2 ^r	-1.2 ^r	-2.8 ^r	-1.1
March.....	-2.4 ^r	-26.0 ^r	0.0	-1.7 ^r	-1.5 ^r	-1.7 ^r
April.....	-2.6	-31.5	-0.5	-3.3	-3.1	-3.3
Apr. 2018 to 2019.....	-0.2	6.5	-0.9	0.2	-2.7	0.5
Apr. 2019 to 2020.....	-6.8	-56.6	-1.0	-7.0	-4.1	-7.3

r Revised

Chart 2. One-month and 12-month percent change in the Export Price Index: April 2019 – April 2020



Exports

The price index for U.S. exports decreased 3.3 percent in April following declines of 1.7 percent in March and 1.2 percent in February. The April drop was the largest 1-month decrease in export prices since the index was first published on a monthly basis in December 1988. Declining prices for both nonagricultural exports and agricultural exports contributed to the April decrease. Prices for U.S. exports fell 7.0 percent from April 2019 to April 2020, the largest over-the-year decline since a 7.3-percent drop for the year ended September 2015. (See table 2.)

Agricultural Exports: Prices for agricultural exports fell 3.1 percent in April, after decreasing 1.5 percent in March and 2.8 percent in February. The April drop was the largest decline since the index fell 5.2 percent in July 2018. Lower prices for corn, meat, cotton, fruit, soybeans, and nuts all contributed to the overall decline in April. The price index for agricultural exports decreased 4.1 percent over the past year, driven by falling prices for cotton, vegetables, corn, and meat.

All Exports Excluding Agriculture: Nonagricultural export prices decreased 3.3 percent in April following a 1.7-percent decline in March and a 1.1-percent drop in February. The April decrease was the largest decline since the index was first published on a monthly basis in December 1988. In April, the drop was driven by lower nonagricultural industrial supplies and materials prices; lower consumer goods prices also contributed to the decline. The price index for nonagricultural exports decreased 7.3 percent over the past 12 months, the largest over-the-year drop since the index was first published in March 1985.

Nonagricultural Industrial Supplies and Materials: Prices for nonagricultural industrial supplies and materials declined 10.0 percent in April, after a 4.8-percent drop in March. The April decrease was led by a 28.2-percent drop in fuel prices and was the largest decline in nonagricultural industrial supplies and materials prices since the index was first published monthly in September 1992.

Finished Goods: Prices for finished goods were down overall in April. Consumer goods prices declined 0.3 percent following a 0.6-percent drop in March. The April decline was driven by lower prices for medicinal, dental, and pharmaceutical materials. The price indexes for capital goods and automotive vehicles were unchanged in April.

Measures of Import and Export Prices by Locality

Imports by Locality of Origin: Prices for imports from China ticked up 0.1 percent in April, the first monthly advance since the index rose 0.2 percent in December 2019. The price index for imports from China declined 1.1 percent for the year ended in April, the smallest over-the-year decrease since the index declined 1.0 percent from March 2018 to March 2019. In contrast, import prices from Japan decreased 0.2 percent in April, the largest drop since the index fell 0.3 percent in October 2017. Prices for imports from Japan edged down 0.1 percent over the past year. Driven by lower petroleum prices, the price index for imports from Canada decreased 10.2 percent, the largest decline since the index was first published on a monthly basis in September 1992. Import prices from Canada fell 23.5 percent for the year ended in April. Prices for imports from the European Union decreased 0.7 percent in April and prices for imports from Mexico declined 0.4 percent. (See table 7.)

Exports by Locality of Destination: Export prices to China fell 2.1 percent in April, after decreasing 2.7 percent in March and 1.0 percent in February. Prices for exports to China declined 8.2 percent over the past 12 months, the largest over-the-year drop since the index was first published in December 2017. The price index for exports to Japan declined 3.9 percent in April following a 3.4-percent drop in March. Those were the 2 largest monthly decreases since the index was first published in December 2017. Export prices to Canada fell 2.6 percent in April, after a 2.5-percent drop the previous month. Those were the largest decreases since the index declined 2.9 percent in January 2019. Prices for exports to the European Union fell 2.4 percent in April and the price index for exports to Mexico decreased 5.2 percent. (See table 8.)

Terms of Trade Indexes: Terms of Trade indexes are based on country, region, or grouping and measure the change in the purchasing power of exports relative to imports. The index for U.S. terms of trade with China fell 2.2 percent in April following a 2.7-percent drop the previous month. The drop in April resulted from both a decrease in export prices to China and an increase in import prices from China. The U.S. terms of trade with Japan declined 3.6 percent in April, after a 3.4-percent drop in March. The indexes for U.S. terms of trade with the European Union and Mexico also fell in April, decreasing 1.7 percent and 4.8 percent, respectively. In contrast, the U.S. terms of trade with Canada increased 8.5 percent in April, and advanced 22.0 percent over the past year. (See table 9.)

Import and Export Services

Imports: Import air passenger fares fell 12.3 percent in April, after declining 9.8 percent the previous month. The April decrease was the largest drop since the index was first published monthly in December 2000. The decline in April was driven by a 26.0-percent decrease in European fares. Import air passenger fares fell 16.2 percent for the year ended in April, the largest over-the-year drop since the index decreased 19.5 percent from August 2008 to August 2009. Import air freight prices rose 38.5 percent in April, the largest advance since the index was first published monthly in December 2005. The price index for import air freight increased 40.4 percent over the past 12 months. (See table 10.)

Exports: Export air passenger fares fell 7.9 percent in April following decreases of 4.2 percent in March and 9.3 percent in February. The index for export air passenger fares declined 14.1 percent over the past year, the largest 12-month drop since the index fell 14.6 percent for the year ended December 2015. The price index for export air freight declined 2.6 percent in April and 3.3 percent over the past 12 months, the largest over-the-year decrease since the index fell 6.0 percent for the year ended January 2010.

Import and Export Price Index data for May are scheduled for release on Friday, June 12, 2020 at 8:30 a.m. (EDT).

Table 1. U.S. import price indexes and percent changes for selected categories of goods: April 2019 to April 2020

[2000=100, unless otherwise noted]

Description	End Use	Relative importance Mar. 2020 ¹	Index		Percent change				
			Mar. 2020	Apr. 2020	Annual Apr. 2019 to Apr. 2020	Monthly			
						Dec. 2019 to Jan. 2020	Jan. 2020 to Feb. 2020	Feb. 2020 to Mar. 2020	Mar. 2020 to Apr. 2020
All commodities		100.000	121.3	118.2	-6.8	0.2	-0.7	-2.4	-2.6
All imports excluding food and fuels (Dec. 2010=100)		86.848	99.1	98.7	-0.8	0.2	0.1	0.0	-0.4
All imports excluding petroleum		93.523	112.1	111.5	-1.1	0.1	0.2	-0.2	-0.5
All imports excluding fuels (Dec. 2001=100)		93.173	116.2	115.6	-1.0	0.3	0.2	0.0	-0.5
Foods, feeds, & beverages	0	6.325	178.9	176.5	-4.1	0.5	1.2	-1.0	-1.3
Agricultural foods, feeds & beverages, excluding distilled beverages.....	00	4.877	193.5	190.4	-6.0	0.1	1.1	-1.0	-1.6
Nonagricultural foods (fish, distilled beverages).....	01	1.448	146.8	145.9	2.7	1.8	1.5	-0.9	-0.6
Industrial supplies & materials	1	21.067	163.5	143.4	-26.4	0.1	-3.3	-10.1	-12.3
Industrial supplies & materials excluding petroleum.....		14.799	155.0	150.1	-3.2	-0.3	0.3	-0.3	-3.2
Industrial supplies & materials excluding fuels (Dec. 2001=100).....		14.258	176.1	170.5	-3.6	0.2	0.9	0.2	-3.2
Industrial supplies & materials, durable....		9.048	171.2	164.0	-2.1	0.7	1.6	0.6	-4.2
Industrial supplies & materials nondurable excluding petroleum.....		5.543	134.7	132.6	-5.1	-1.9	-1.6	-1.8	-1.6
Fuels & lubricants.....	10	6.827	142.7	97.8	-56.6	-0.1	-9.1	-26.0	-31.5
Petroleum & petroleum products.....	100	6.477	152.5	102.1	-58.5	0.4	-8.9	-26.5	-33.0
Crude.....	10000	3.953	138.8	86.7	-66.6	-0.3	-10.8	-33.1	-37.5
Fuels, n.e.s.-coals & gas.....	101	0.350	93.5	90.9	0.4	-10.5	-12.3	-13.4	-2.8
Gas-natural.....	10110	0.288	81.8	79.1	5.9	-12.8	-14.0	-15.7	-3.3
Paper & paper base stocks.....	11	0.514	108.9	107.5	-13.0	-1.2	-0.7	-0.5	-1.3
Materials associated with nondurable supplies & materials.....	12	4.679	153.5	151.2	-5.2	-0.6	-0.2	-0.5	-1.5
Selected building materials.....	13	1.602	148.4	141.5	-1.2	-0.1	1.7	1.9	-4.6
Unfinished metals related to durable goods.....	14	3.794	248.3	228.6	-3.2	2.1	3.5	1.2	-7.9
Finished metals related to durable goods.....	15	1.813	155.5	155.7	-2.0	0.1	-0.7	-0.7	0.1
Nonmetals related to durable goods.....	16	1.839	112.5	112.3	-0.8	-0.4	-0.2	-0.4	-0.2
Capital goods	2	29.261	87.8	87.9	-0.7	0.1	0.1	0.1	0.1
Electric generating equipment.....	20	3.722	120.9	120.9	1.7	0.2	0.1	0.2	0.0
Nonelectrical machinery.....	21	23.122	79.7	79.8	-1.1	0.1	0.1	0.1	0.1
Transportation equipment excluding motor vehicles (Dec. 2001=100).....	22	2.417	135.1	135.3	-0.4	-0.1	0.1	0.0	0.1
Automotive vehicles, parts & engines	3	16.057	110.4	110.8	0.9	0.5	0.0	0.2	0.4
Consumer goods, excluding automobiles	4	27.289	106.5	106.3	-0.6	0.0	0.0	-0.3	-0.2
Nondurables, manufactured.....	40	13.474	123.9	123.9	0.6	0.1	0.0	0.0	0.0
Durables, manufactured.....	41	12.575	90.8	91.1	-0.5	0.0	-0.1	-0.1	0.3
Nonmanufactured consumer goods.....	42	-	111.3	-	-	0.1	0.0	-4.5	-

¹ Relative importance figures are based on 2018 trade values.

NOTES: Data may be revised in each of the 3 months after original publication.

Dash = Not available

Table 2. U.S. export price indexes and percent changes for selected categories of goods: April 2019 to April 2020

[2000=100, unless otherwise noted]

Description	End Use	Relative importance Mar. 2020 ¹	Index		Percent change				
			Mar. 2020	Apr. 2020	Annual Apr. 2019 to Apr. 2020	Monthly			
						Dec. 2019 to Jan. 2020	Jan. 2020 to Feb. 2020	Feb. 2020 to Mar. 2020	Mar. 2020 to Apr. 2020
All commodities.....		100.000	122.2	118.2	-7.0	0.6	-1.2	-1.7	-3.3
Agricultural commodities.....		9.438	176.3	170.8	-4.1	2.0	-2.8	-1.5	-3.1
All exports excluding food and fuels (Dec. 2010=100).....		82.087	101.7	101.1	-0.7	0.4	0.3	0.0	-0.6
Nonagricultural commodities.....		90.562	118.1	114.2	-7.3	0.6	-1.1	-1.7	-3.3
Foods, feeds, & beverages.....	0	8.753	180.4	175.0	-3.2	2.3	-2.9	-1.6	-3.0
Agricultural foods, feeds & beverages, excluding distilled beverages.....	00	8.194	178.8	173.0	-3.2	2.3	-3.1	-1.4	-3.2
Nonagricultural foods (fish, distilled beverages).....	01	0.560	212.0	213.7	-2.0	2.1	-0.4	-3.9	0.8
Industrial supplies & materials.....	1	31.119	140.4	126.8	-20.5	0.9	-3.3	-4.7	-9.7
Industrial supplies & materials, durable....		10.868	170.6	167.4	0.5	1.3	1.7	-0.6	-1.9
Industrial supplies & materials, nondurable.....		20.251	127.8	110.1	-29.6	0.6	-5.7	-6.8	-13.8
Agricultural industrial supplies & materials.....	10	1.214	166.5	162.4	-9.4	0.3	-1.0	-2.1	-2.5
Nonagricultural industrial supplies & materials.....		29.904	139.5	125.6	-20.9	0.9	-3.4	-4.8	-10.0
Fuels & lubricants.....	11	9.160	134.9	96.8	-50.4	1.1	-10.7	-13.6	-28.2
Nonagricultural supplies & materials excluding fuels & building materials.....	12	19.799	157.4	154.2	-2.7	0.7	0.8	-0.4	-2.0
Selected building materials.....	13	0.945	117.8	117.8	-4.1	-0.6	0.0	1.5	0.0
Capital goods.....	2	37.500	111.6	111.6	0.8	0.4	0.3	0.3	0.0
Electrical generating equipment.....	20	3.880	120.0	120.0	1.7	0.7	1.6	0.0	0.0
Nonelectrical machinery.....	21	24.393	95.3	95.2	0.4	0.3	0.2	0.3	-0.1
Transportation equipment excluding motor vehicles (Dec. 2001=100).....	22	9.227	184.3	184.6	1.4	0.3	0.2	0.2	0.2
Automotive vehicles, parts & engines.....	3	10.046	114.4	114.4	-0.4	0.5	0.1	0.0	0.0
Consumer goods, excluding automotives.....	4	12.582	109.8	109.5	-0.7	0.1	0.1	-0.6	-0.3
Nondurables, manufactured.....	40	6.083	108.0	107.5	-0.4	0.1	0.0	-0.3	-0.5
Durables, manufactured.....	41	5.079	107.7	107.7	0.6	0.1	0.3	0.4	0.0
Nonmanufactured consumer goods (Dec. 2018=100).....	42	-	93.4	-	-	-0.1	-0.2	-5.4	-

¹ Relative importance figures are based on 2018 trade values.

NOTES: Data may be revised in each of the 3 months after original publication.

Dash = Not available

Table 3. U.S. import price indexes and percent changes for selected industries: April 2019 to April 2020
 [December 2005=100, unless otherwise noted]

Description	NAICS	Relative importance Mar. 2020 ¹	Index		Percent change				
			Mar. 2020	Apr. 2020	Annual	Monthly			
					Apr. 2019 to Apr. 2020	Dec. 2019 to Jan. 2020	Jan. 2020 to Feb. 2020	Feb. 2020 to Mar. 2020	Mar. 2020 to Apr. 2020
Nonmanufacturing		6.436	78.4	58.9	-52.3	-0.4	-7.9	-24.7	-24.9
Agriculture, forestry, fishing and hunting	11	1.908	174.9	169.9	-11.0	1.0	1.5	-1.8	-2.9
Crop production.....	111	1.551	185.2	179.8	-12.5	0.1	2.9	-1.1	-2.9
Mining	21	4.527	65.6	43.3	-62.9	-0.7	-10.3	-31.5	-34.0
Oil and gas extraction.....	211	4.267	63.9	40.8	-65.0	-0.7	-10.9	-32.5	-36.2
Manufacturing		93.257	110.4	109.2	-2.0	0.2	0.1	-0.5	-1.1
Manufacturing, part 1	31	11.657	125.5	125.1	-0.2	0.1	0.2	-0.2	-0.3
Food manufacturing.....	311	3.605	154.4	152.4	-2.5	0.1	0.0	-0.6	-1.3
Beverage and tobacco product manufacturing.....	312	1.207	129.3	129.3	4.5	0.4	2.1	0.2	0.0
Textile mills (Dec. 2011=100).....	313	0.375	97.8	97.0	-3.5	-0.1	-0.7	-0.7	-0.8
Textile product mills.....	314	0.958	107.0	106.8	-1.7	-0.6	0.2	0.2	-0.2
Apparel manufacturing.....	315	3.827	112.5	112.8	0.7	0.0	0.0	0.0	0.3
Leather and allied product manufacturing.....	316	1.685	124.2	124.2	0.9	0.3	0.1	0.0	0.0
Manufacturing, part 2	32	18.407	122.1	116.8	-7.7	0.2	-0.6	-1.9	-4.3
Wood product manufacturing (Dec. 2019=100).....	321	0.870	106.6	97.6	-	-0.3	3.1	3.7	-8.4
Paper manufacturing.....	322	1.014	107.2	105.8	-8.5	-0.6	-0.3	0.0	-1.3
Petroleum and coal products manufacturing.....	324	2.308	83.8	61.3	-39.5	2.4	-4.5	-13.3	-26.8
Chemical manufacturing.....	325	10.481	137.6	136.4	-2.2	-0.2	0.0	-0.3	-0.9
Plastics and rubber products manufacturing.....	326	2.430	118.6	118.7	-0.4	0.0	-0.3	-0.3	0.1
Nonmetallic mineral product manufacturing.....	327	1.105	131.2	131.3	0.1	0.2	-0.2	-0.1	0.1
Manufacturing, part 3	33	63.192	103.6	103.3	-0.6	0.2	0.2	0.0	-0.3
Primary metal manufacturing.....	331	4.319	163.0	152.6	-3.5	1.9	2.7	0.9	-6.4
Fabricated metal product manufacturing.....	332	3.295	125.9	126.3	-0.2	-0.4	0.0	-0.2	0.3
Machinery manufacturing.....	333	7.929	119.3	119.4	0.6	0.5	0.1	-0.1	0.1
Computer and electronic product manufacturing.....	334	17.455	71.8	72.1	-1.4	0.0	0.0	0.1	0.4
Electrical equipment, appliance, and component manufacturing.....	335	5.630	117.6	117.5	0.3	0.1	-0.1	0.2	-0.1
Transportation equipment manufacturing.....	336	17.120	109.5	109.8	0.6	0.5	0.0	0.1	0.3
Furniture and related product manufacturing.....	337	1.944	115.3	115.2	-2.0	0.0	0.0	-0.2	-0.1
Miscellaneous manufacturing.....	339	5.500	117.3	115.4	-2.5	-0.3	0.2	-1.4	-1.6

¹ Relative importance figures are based on 2018 trade values.

NOTES: Data may be revised in each of the 3 months after original publication.

Dash = Not available

Table 4. U.S. export price indexes and percent changes for selected industries: April 2019 to April 2020
 [December 2005=100, unless otherwise noted]

Description	NAICS	Relative importance Mar. 2020 ¹	Index		Percent change				
			Mar. 2020	Apr. 2020	Annual Apr. 2019 to Apr. 2020	Monthly			
						Dec. 2019 to Jan. 2020	Jan. 2020 to Feb. 2020	Feb. 2020 to Mar. 2020	Mar. 2020 to Apr. 2020
Nonmanufacturing.....		8.410	104.3	92.5	-32.4	0.2	-7.1	-12.9	-11.3
Agriculture, forestry, fishing and hunting.....	11	4.669	148.5	141.5	-6.4	3.5	-4.1	-1.5	-4.7
Crop production.....	111	4.318	155.7	147.6	-6.5	3.8	-4.0	-1.6	-5.2
Mining.....	21	3.742	52.8	42.5	-53.2	-2.5	-9.7	-24.0	-19.5
Mining (except oil and gas).....	212	1.209	96.1	95.0	-19.4	-4.5	-0.4	-1.0	-1.1
Manufacturing.....		90.298	115.7	112.8	-3.9	0.7	-0.6	-0.4	-2.5
Manufacturing, part 1.....	31	6.809	139.5	138.0	-1.8	0.9	-1.1	-1.3	-1.1
Food manufacturing.....	311	4.658	157.0	154.1	-2.2	0.9	-1.7	-1.8	-1.8
Beverage and tobacco product manufacturing.....	312	0.650	121.9	124.3	0.5	1.0	0.2	-0.7	2.0
Manufacturing, part 2.....	32	24.203	109.2	99.5	-15.2	1.0	-2.9	-1.0	-8.9
Wood product manufacturing (Dec. 2017=100).....	321	0.469	94.4	97.0	-3.4	-0.9	-0.2	1.8	2.8
Paper manufacturing.....	322	1.511	117.5	117.9	-7.6	-1.2	-0.3	-0.3	0.3
Petroleum and coal products manufacturing.....	324	5.384	93.3	61.4	-47.3	4.5	-11.5	-4.2	-34.2
Chemical manufacturing.....	325	13.393	116.4	113.8	-4.7	0.1	-0.1	-0.5	-2.2
Plastics and rubber products manufacturing.....	326	2.359	117.2	116.6	0.3	-0.1	0.3	0.1	-0.5
Nonmetallic mineral product manufacturing.....	327	0.881	122.7	122.0	3.6	0.1	0.2	5.2	-0.6
Manufacturing, part 3.....	33	59.287	116.2	116.0	0.8	0.5	0.5	0.0	-0.2
Primary metal manufacturing.....	331	4.388	160.6	158.4	7.2	2.4	3.5	-0.6	-1.4
Fabricated metal product manufacturing.....	332	3.134	150.1	149.7	2.1	0.7	0.1	-0.1	-0.3
Machinery manufacturing.....	333	10.031	130.8	130.7	0.8	0.5	0.1	0.2	-0.1
Computer and electronic product manufacturing.....	334	14.084	82.5	82.5	0.2	0.4	0.6	0.2	0.0
Electrical equipment, appliance, and component manufacturing.....	335	3.861	118.0	118.0	-0.2	0.0	0.3	0.2	0.0
Transportation equipment manufacturing.....	336	17.971	129.7	129.9	0.6	0.4	0.2	0.1	0.2
Furniture and related product manufacturing (Dec. 2011=100).....	337	0.408	124.8	124.8	1.9	0.0	1.0	0.9	0.0
Miscellaneous manufacturing.....	339	5.410	118.6	118.2	-1.6	0.0	0.2	-1.2	-0.3

¹ Relative importance figures are based on 2018 trade values.

NOTES: Data may be revised in each of the 3 months after original publication.

Dash = Not available

Table 5. U.S. import price indexes and percent changes for selected categories of goods: April 2019 to April 2020

[2000=100, unless otherwise noted]

Description	Harmoni- zied system	Relative importance Mar. 2020 ¹	Index		Percent change				
			Mar. 2020	Apr. 2020	Annual Apr. 2019 to Apr. 2020	Monthly			
						Dec. 2019 to Jan. 2020	Jan. 2020 to Feb. 2020	Feb. 2020 to Mar. 2020	Mar. 2020 to Apr. 2020
Live animals; animal products.....	I	1.382	193.6	190.6	-4.1	0.9	-1.2	-2.5	-1.5
Meat and edible meat offal.....	02	0.373	257.3	251.4	-5.3	-3.0	-1.0	-3.8	-2.3
Fish and crustaceans, molluscs and other aquatic invertebrates.....	03	0.747	139.8	138.2	-2.3	3.4	-1.7	-1.4	-1.1
Vegetable products.....	II	1.904	204.2	200.2	-11.5	0.1	2.9	-1.3	-2.0
Edible vegetables, roots, and tubers.....	07	0.406	421.1	430.4	-26.5	-1.4	1.9	-15.5	2.2
Edible fruit and nuts; peel of citrus fruit or melons.....	08	0.695	115.7	108.6	-15.7	1.5	6.9	6.8	-6.1
Coffee, tea, mate and spices.....	09	0.342	214.1	211.7	6.0	-1.8	3.7	-0.3	-1.1
Animal or vegetable fats and oils (Dec. 2009=100).....	III	0.260	89.2	84.3	-4.3	4.8	-0.8	-0.1	-5.5
Prepared foodstuffs, beverages, and tobacco.....	IV	3.099	170.5	169.5	2.1	0.2	0.9	0.4	-0.6
Cocoa and cocoa preparations (Dec. 2009=100).....	18	0.220	105.8	100.7	3.7	0.1	1.4	2.8	-4.8
Preparations of vegetables, fruit, nuts, or other parts of plants.....	20	0.377	170.7	170.7	0.8	-0.1	-0.3	-0.4	0.0
Beverages, spirits, and vinegar.....	22	1.157	140.5	140.1	4.6	0.5	2.3	0.2	-0.3
Mineral products.....	V	6.967	145.5	102.4	-54.5	-0.1	-8.5	-25.2	-29.6
Mineral fuels, oils and residuals, bituminous substances and mineral waxes.....	27	6.619	141.0	97.0	-56.4	-0.2	-9.1	-25.9	-31.2
Products of the chemical or allied industries.....	VI	9.855	156.2	154.6	-1.5	-0.1	0.1	-0.3	-1.0
Inorganic chemicals.....	28	0.497	288.0	276.4	-11.3	-3.5	-1.2	-1.4	-4.0
Organic chemicals.....	29	2.217	126.7	121.6	-4.9	0.1	0.8	-0.2	-4.0
Pharmaceutical products.....	30	5.041	154.3	154.5	1.2	0.3	-0.2	-0.1	0.1
Essential oils and resinoids (Dec. 2016=100).....	33	0.642	103.9	103.7	0.4	1.2	0.0	-0.5	-0.2
Miscellaneous chemical products.....	38	0.606	101.1	100.9	-2.4	-1.1	0.0	-0.3	-0.2
Plastics and articles thereof; rubber and articles thereof.....	VII	3.710	138.6	137.9	-1.9	-0.1	-0.4	-0.4	-0.5
Plastics and articles thereof.....	39	2.494	141.0	139.9	-2.6	-0.1	-0.4	-0.5	-0.8
Rubber and articles thereof.....	40	1.216	135.8	135.9	-0.4	0.0	-0.4	-0.4	0.1
Raw hides, skins, leather, furskins, travel goods, etc.....	VIII	0.637	125.0	124.9	0.2	0.2	0.5	0.2	-0.1
Articles of leather; travel goods, bags, etc. of various materials.....	42	0.610	131.8	131.8	0.5	0.2	0.5	0.2	0.0
Wood, wood charcoal, cork, straw, basketware and wickerwork.....	IX	0.897	154.9	141.9	-2.7	-0.3	3.2	3.8	-8.4
Wood and articles of wood; wood charcoal (Dec. 2019=100).....	44	0.872	106.9	97.7	-	-0.3	3.2	3.9	-8.6
Woodpulp, recovered paper, and paper products.....	X	1.046	112.7	110.8	-9.0	-1.0	-0.4	0.0	-1.7
Paper and paperboard; articles of paper pulp, paper or paperboard.....	48	0.729	107.5	105.7	-5.1	-0.6	-0.2	-0.2	-1.7
Textile and textile articles.....	XI	4.959	114.1	114.2	-0.2	-0.1	0.0	0.0	0.1
Articles of apparel and clothing accessories, knitted or crocheted.....	61	2.015	105.1	105.2	0.5	-0.2	0.1	-0.3	0.1
Articles of apparel and clothing accessories, not knitted or crocheted.....	62	1.656	121.3	121.8	1.3	0.5	-0.2	0.4	0.4
Made-up or worn textile articles.....	63	0.653	101.2	101.1	-2.4	-1.0	0.4	0.4	-0.1

See footnotes at end of table.

Table 5. U.S. import price indexes and percent changes for selected categories of goods: April 2019 to April 2020 — Continued

[2000=100, unless otherwise noted]

Description	Harmoni- zied system	Relative importance Mar. 2020 ¹	Index		Percent change				
			Mar. 2020	Apr. 2020	Annual	Monthly			
					Apr. 2019 to Apr. 2020	Dec. 2019 to Jan. 2020	Jan. 2020 to Feb. 2020	Feb. 2020 to Mar. 2020	Mar. 2020 to Apr. 2020
Headgear, umbrellas, artificial flowers, etc.....	XII	1.414	124.3	124.4	1.8	0.2	0.1	-0.1	0.1
Footwear and parts of such articles.....	64	1.183	122.7	122.7	1.3	0.3	0.1	0.0	0.0
Stone, plaster, cement, asbestos, ceramics, glass etc.....	XIII	0.992	132.1	132.2	0.0	0.0	-0.2	-0.2	0.1
Pearls, stones, precious metals, imitation jewelry, and coins.....	XIV	3.134	208.0	189.4	6.5	2.9	5.4	-0.3	-8.9
Base metals and articles of base metals. ...	XV	5.545	166.7	163.7	-8.3	0.1	-0.9	-0.7	-1.8
Iron and steel.....	72	1.144	200.5	196.4	-11.9	-0.1	1.1	-0.4	-2.0
Articles of iron or steel.....	73	1.714	145.8	146.3	-2.9	-0.3	-0.3	-0.5	0.3
Copper and articles thereof.....	74	0.405	253.8	236.2	-19.4	2.4	-7.2	-1.3	-6.9
Aluminum and articles thereof.....	76	0.907	124.4	120.4	-10.5	-0.2	-1.3	-0.7	-3.2
Tools, implements, cutlery, spoons and forks, of base metal; parts thereof.....	82	0.474	123.0	123.0	-0.6	0.0	0.2	0.0	0.0
Miscellaneous articles of base metal.....	83	0.544	133.9	134.2	-1.5	-0.3	-0.1	-0.4	0.2
Machinery, electrical equipment, TV image and sound recorders, parts, etc.....	XVI	31.219	78.8	79.0	-0.4	0.0	0.0	0.1	0.3
Machinery and mechanical appliances; parts thereof.....	84	15.831	84.3	84.5	-1.3	-0.2	0.1	0.4	0.2
Electrical machinery and equip, sound and TV recorders & reproducers, parts.....	85	15.388	73.6	73.8	0.4	0.3	-0.1	0.0	0.3
Vehicles, aircraft, vessels and associated transport equipment.....	XVII	14.165	114.2	114.7	1.0	0.6	0.0	0.1	0.4
Motor vehicles and their parts.....	87	13.015	113.4	113.9	1.2	0.6	0.0	0.2	0.4
Optical, photo, measuring, medical & musical instruments; & timepieces.....	XVIII	4.175	101.7	102.0	0.0	-0.1	0.0	-0.1	0.3
Optical, photographic, measuring and medical instruments.....	90	3.898	97.9	98.1	-0.4	-0.4	-0.1	0.0	0.2
Miscellaneous manufactured articles.....	XX	4.563	111.3	111.3	-1.0	-0.1	0.0	-0.1	0.0
Furniture & stuffed furnishings; lamps & lighting fittings, nesoi; prefab bldgs.....	94	2.870	117.0	116.8	-1.5	-0.1	0.1	-0.1	-0.2
Toys, games and sports equipment; parts and accessories thereof.....	95	1.417	102.1	102.2	0.0	-0.2	0.0	0.0	0.1
Miscellaneous manufactured articles.....	96	0.276	127.2	127.2	-1.2	0.1	0.0	0.0	0.0

¹ Relative importance figures are based on 2018 trade values.

NOTES: Data may be revised in each of the 3 months after original publication.

Dash = Not available

Table 6. U.S. export price indexes and percent changes for selected categories of goods: April 2019 to April 2020

[2000=100, unless otherwise noted]

Description	Harmoni- zied system	Relative importance Mar. 2020 ¹	Index		Percent change				
			Mar. 2020	Apr. 2020	Annual	Monthly			
					Apr. 2019 to Apr. 2020	Dec. 2019 to Jan. 2020	Jan. 2020 to Feb. 2020	Feb. 2020 to Mar. 2020	Mar. 2020 to Apr. 2020
Live animals; animal products.....	I	1.972	211.2	204.8	-3.1	0.8	-1.8	-1.4	-3.0
Meat & edible meat offal (Dec. 2006=100)...	02	1.177	164.1	155.6	-4.9	0.2	-2.4	0.1	-5.2
Fish and crustaceans, mollusks and aquatic invertebrates (Dec. 2016=100).....	03	0.347	115.1	117.6	-2.5	2.9	-1.2	-5.2	2.2
Vegetable products.....	II	4.284	192.6	184.8	-4.4	3.8	-4.6	-1.1	-4.0
Edible fruit and nuts; peel of citrus fruit or melons.....	08	0.981	137.2	129.0	-3.7	-5.3	0.1	-0.1	-6.0
Cereals.....	10	1.451	198.3	185.8	-1.5	3.5	-0.2	-1.0	-6.3
Oilseeds and misc. grains, seeds, fruits, plants, straw and fodder.....	12	1.465	190.5	186.6	-1.5	4.6	-5.4	1.2	-2.0
Prepared foodstuffs, beverages, and tobacco.....	IV	3.050	151.1	149.1	-2.9	0.4	-1.0	-2.8	-1.3
Preparations of vegetables, fruit, nuts or other parts of plants (Dec. 2019=100)....	20	0.335	98.6	97.9	-	-0.1	-0.8	-0.5	-0.7
Miscellaneous edible preparations (Dec. 2017=100).....	21	0.604	100.6	100.2	2.8	0.0	0.2	-0.1	-0.4
Beverages, spirits, and vinegar (Dec. 2008=100).....	22	0.542	101.4	93.2	-12.3	-4.4	0.9	-5.8	-8.1
Residues and waste from the food industries; prepared animal feed.....	23	0.710	211.2	214.7	-3.5	5.7	-4.2	-6.0	1.7
Mineral products.....	V	9.114	162.8	117.1	-50.2	1.2	-10.6	-13.5	-28.1
Ores, slag and ash (Dec. 2012=100).....	26	0.374	87.3	83.4	-17.1	-2.2	-0.8	-4.6	-4.5
Mineral fuels, oils and residuals, bituminous substances and mineral waxes.....	27	8.539	154.4	108.4	-52.1	1.3	-11.2	-14.1	-29.8
Products of the chemical or allied industries.....	VI	11.070	136.5	135.0	-3.4	0.1	-0.3	-0.4	-1.1
Inorganic chemicals.....	28	0.720	139.0	137.8	-7.7	0.6	-5.0	-0.7	-0.9
Organic chemicals.....	29	2.517	138.2	134.1	-8.8	0.2	0.1	-0.4	-3.0
Pharmaceutical products.....	30	3.207	107.4	106.3	-0.5	0.4	0.1	-0.7	-1.0
Tanning or dyeing extracts, dyes, paints varnish, putty, & inks (Dec. 2015=100)....	32	0.539	103.9	103.8	-0.1	-0.1	0.1	-1.0	-0.1
Essential oils and resinoids; perfumery cosmetic or toilet preparations.....	33	0.882	128.3	128.1	-3.4	-1.2	-0.5	0.1	-0.2
Soap; lubricants; waxes, polishing or scouring products; candles, pastes.....	34	0.503	125.6	125.6	1.3	0.4	0.1	0.1	0.0
Miscellaneous chemical products.....	38	2.063	158.1	157.4	-0.1	1.3	-0.1	0.0	-0.4
Plastics and articles thereof; rubber and articles thereof.....	VII	5.243	141.9	138.9	-3.1	0.1	0.4	0.0	-2.1
Plastics and articles thereof.....	39	4.341	138.9	136.0	-3.1	0.1	0.4	0.1	-2.1
Rubber and articles thereof.....	40	0.902	152.6	149.3	-3.4	0.4	0.3	-0.3	-2.2
Wood, wood charcoal, cork, straw, baskets and wickerwork (Dec. 2014=100).....	IX	0.575	92.9	95.7	-3.7	-0.4	-0.1	2.5	3.0
Woodpulp, recovered paper, and paper products.....	X	1.788	119.3	120.4	-4.8	-1.1	0.4	1.3	0.9
Woodpulp and recovered paper (Dec. 2019=100).....	47	0.454	106.2	110.0	-	-4.1	4.8	5.7	3.6
Paper and paperboard; articles of paper pulp, paper or paperboard.....	48	1.040	122.6	123.4	-2.1	-0.2	-1.1	0.0	0.7
Textile and textile articles.....	XI	1.709	119.1	116.1	-6.7	1.9	-0.6	-1.4	-2.5
Cotton, including yarns and woven fabrics thereof.....	52	0.474	114.2	102.4	-20.7	3.9	-1.6	-4.3	-10.3
Stone, plaster, cement, asbestos, ceramics, glass etc.....	XIII	0.856	132.1	131.8	3.4	-0.1	0.1	4.3	-0.2

See footnotes at end of table.

Table 6. U.S. export price indexes and percent changes for selected categories of goods: April 2019 to April 2020 — Continued

[2000=100, unless otherwise noted]

Description	Harmoni- zied system	Relative importance Mar. 2020 ¹	Index		Percent change				
			Mar. 2020	Apr. 2020	Annual	Monthly			
					Apr. 2019 to Apr. 2020	Dec. 2019 to Jan. 2020	Jan. 2020 to Feb. 2020	Feb. 2020 to Mar. 2020	Mar. 2020 to Apr. 2020
Glass and glassware (Dec. 2019=100).....	70	0.398	100.0	100.0	-	0.0	0.0	0.0	0.0
Pearls, stones, precious metals, imitation jewelry, and coins.....	XIV	4.849	272.4	270.3	10.8	1.9	4.4	-1.9	-0.8
Base metals and articles of base metals. ...	XV	4.664	155.4	150.4	-7.6	1.4	-1.1	-0.3	-3.2
Copper and articles thereof.....	74	0.489	170.6	150.9	-21.6	4.1	-5.1	-1.2	-11.5
Aluminum and articles thereof.....	76	0.699	99.2	94.3	-13.3	1.0	1.7	-1.8	-4.9
Miscellaneous articles of base metal.....	83	0.346	155.8	155.8	1.2	1.6	0.0	0.0	0.0
Machinery, electrical equipment, TV image and sound recorders, parts, etc.....	XVI	29.078	98.2	98.2	0.1	0.3	0.3	0.3	0.0
Machinery and mechanical appliances; parts thereof.....	84	17.383	116.5	116.5	0.1	0.3	0.2	0.5	0.0
Electrical machinery and equipment and parts and accessories thereof.....	85	11.694	78.5	78.7	0.4	0.4	0.4	0.0	0.3
Vehicles, aircraft, vessels and associated transport equipment.....	XVII	13.658	138.0	138.1	0.7	0.4	0.2	0.1	0.1
Motor vehicles and their parts.....	87	8.221	116.8	116.7	-0.1	0.4	0.2	0.0	-0.1
Optical, photo, measuring, medical & musical instruments; & timepieces.....	XVIII	6.170	110.7	110.2	1.1	0.2	0.3	-0.2	-0.5
Miscellaneous manufactured articles.....	XX	1.378	113.9	114.1	0.9	-0.2	0.9	0.2	0.2
Furniture; stuffed furnishings; lamps and lighting fittings nesoi;.....	94	0.770	133.0	133.5	1.8	0.5	0.5	0.9	0.4
Toys, games and sports equipment; parts and accessories thereof.....	95	0.449	88.4	88.2	-0.1	-1.1	1.7	-1.1	-0.2

¹ Relative importance figures are based on 2018 trade values.

NOTES: Data may be revised in each of the 3 months after original publication.

Dash = Not available

Table 7. U.S. import price indexes and percent changes by locality of origin: April 2019 to April 2020
 [2000=100, unless otherwise noted]

Description	Relative importance Mar. 2020 ¹	Index		Percent change				
		Mar. 2020	Apr. 2020	Annual Apr. 2019 to Apr. 2020	Monthly			
					Dec. 2019 to Jan. 2020	Jan. 2020 to Feb. 2020	Feb. 2020 to Mar. 2020	Mar. 2020 to Apr. 2020
Industrialized Countries²	100.000	122.7	118.2	-8.0	-0.2	-1.4	-1.7	-3.7
Nonmanufacturing.....	8.061	128.1	89.9	-56.8	-2.7	-12.8	-16.7	-29.8
Manufacturing.....	91.420	121.6	120.0	-1.0	0.2	-0.1	-0.2	-1.3
Canada	100.000	124.6	111.9	-23.5	-0.7	-4.5	-4.8	-10.2
Nonmanufacturing.....	24.052	123.1	84.6	-58.7	-2.9	-13.5	-17.2	-31.3
Manufacturing.....	75.053	128.9	124.5	-5.4	0.2	-0.5	-0.1	-3.4
European Union	100.000	137.3	136.4	-0.6	0.4	0.0	-0.2	-0.7
Manufacturing.....	98.579	133.6	132.9	-0.4	0.4	0.0	-0.1	-0.5
France (Dec. 2003=100)	100.000	127.3	126.1	-1.7	0.5	-0.2	-0.4	-0.9
Germany (Dec. 2003=100)	100.000	113.5	113.5	1.0	0.4	0.3	-0.2	0.0
United Kingdom (Dec. 2003=100)	100.000	124.3	117.2	-3.9	0.3	0.7	0.4	-5.7
Latin America³	100.000	140.6	137.2	-7.8	0.3	-0.9	-2.4	-2.4
Nonmanufacturing.....	12.029	197.0	159.7	-41.0	1.2	-6.6	-19.1	-18.9
Manufacturing.....	87.675	118.9	118.7	-1.6	0.1	0.2	0.4	-0.2
Mexico (Dec. 2003=100)	100.000	124.9	124.4	-3.5	-0.1	-0.2	-0.6	-0.4
Nonmanufacturing (Dec. 2008=100).....	6.962	113.9	94.1	-40.8	1.1	-3.1	-12.2	-17.4
Manufacturing (Dec. 2008=100).....	92.746	87.1	87.8	0.5	-0.1	0.0	0.5	0.8
Pacific Rim (Dec. 2003=100)⁴	100.000	97.5	97.5	-1.0	-0.1	0.0	-0.1	0.0
China (Dec. 2003=100)	100.000	98.0	98.1	-1.1	0.0	-0.2	0.0	0.1
Japan	100.000	96.8	96.6	-0.1	0.1	0.0	-0.1	-0.2
Taiwan (Dec. 2018=100)	100.000	98.6	97.5	-1.3	-0.1	0.1	-0.1	-1.1
Asian NICs⁵	100.000	85.7	85.1	-4.0	-0.2	-0.5	-0.2	-0.7
ASEAN (Dec. 2003=100)⁶	100.000	97.2	96.9	0.0	0.4	0.0	-0.4	-0.3
Asia Near East (Dec. 2003=100)⁷	100.000	135.3	115.7	-37.6	0.1	-2.7	-22.5	-14.5

¹ Relative importance figures are based on 2018 trade values.

² Western Europe, Canada, Japan, Australia, New Zealand, and South Africa.

³ Mexico, Central America, South America, and the Caribbean.

⁴ China, Japan, Australia, Brunei, Indonesia, Macao, Malaysia, New Zealand, Papua New Guinea, Philippines, and the Asian Newly Industrialized Countries.

⁵ Asian Newly Industrialized Countries - Hong Kong, Singapore, South Korea, and Taiwan.

⁶ Association of Southeast Asian Nations - Brunei, Cambodia, Indonesia, Laos, Malaysia, Myanmar, Philippines, Singapore, Thailand, and Vietnam.

⁷ Bahrain, Iran, Iraq, Israel, Jordan, Kuwait, Lebanon, Oman, Qatar, Saudi Arabia, Syria, United Arab Emirates, and Yemen.

NOTES: Data may be revised in each of the 3 months after original publication.

Regions are not mutually exclusive.

Dash = Not available

Table 8. U.S. export price indexes and percent changes by locality of destination: April 2019 to April 2020
 [December 2017=100, unless otherwise noted]

Description	Relative importance Mar. 2020 ¹	Index		Percent change				
		Mar. 2020	Apr. 2020	Annual	Monthly			
				Apr. 2019 to Apr. 2020	Dec. 2019 to Jan. 2020	Jan. 2020 to Feb. 2020	Feb. 2020 to Mar. 2020	Mar. 2020 to Apr. 2020
Industrialized Countries²	100.000	100.5	97.9	-5.5	0.5	-1.1	-1.9	-2.6
Nonmanufacturing.....	7.994	78.7	67.5	-41.9	0.4	-9.6	-17.6	-14.2
Manufacturing.....	90.710	103.2	101.7	-1.2	0.6	-0.2	-0.2	-1.5
Canada	100.000	100.8	98.2	-6.7	0.4	-1.5	-2.5	-2.6
European Union	100.000	102.1	99.7	-5.1	0.6	-0.9	-2.0	-2.4
Nonmanufacturing.....	7.198	73.4	65.0	-42.8	-1.3	-7.6	-20.4	-11.4
Manufacturing.....	91.386	105.3	103.7	-0.8	0.8	-0.3	0.0	-1.5
Germany	100.000	105.5	104.2	1.4	0.8	-0.2	0.3	-1.2
Latin America³	100.000	97.5	91.6	-11.0	1.6	-3.1	-0.9	-6.1
Nonmanufacturing.....	6.923	94.9	88.6	-17.0	1.8	-5.7	-4.8	-6.6
Manufacturing.....	92.580	97.7	91.8	-10.5	1.5	-3.0	-0.6	-6.0
Mexico	100.000	97.9	92.8	-8.8	1.2	-2.5	-0.6	-5.2
Nonmanufacturing.....	5.516	91.7	87.5	-12.3	1.8	-5.1	-1.5	-4.6
Manufacturing.....	93.897	98.3	93.0	-8.6	1.1	-2.3	-0.5	-5.4
Pacific Rim⁴	100.000	95.7	94.0	-6.7	0.4	-1.1	-2.8	-1.8
Nonmanufacturing.....	11.502	71.8	63.6	-37.8	1.5	-6.3	-21.0	-11.4
Manufacturing.....	86.721	100.5	100.2	-0.6	0.1	-0.2	0.1	-0.3
China	100.000	93.5	91.5	-8.2	-0.2	-1.0	-2.7	-2.1
Nonmanufacturing.....	9.926	67.9	54.4	-46.5	-0.1	-7.9	-22.3	-19.9
Manufacturing.....	87.842	99.4	99.3	-0.8	-0.3	0.1	-0.2	-0.1
Japan	100.000	95.9	92.2	-8.5	0.0	-1.2	-3.4	-3.9
Nonmanufacturing.....	16.531	74.9	61.4	-42.3	-0.6	-5.9	-18.9	-18.0
Manufacturing.....	81.387	100.3	99.5	0.3	0.1	-0.3	0.2	-0.8

¹ Relative importance figures are based on 2018 trade values.

² Western Europe, Canada, Japan, Australia, New Zealand, and South Africa.

³ Mexico, Central America, South America, and the Caribbean.

⁴ China, Japan, Australia, Brunei, Indonesia, Macao, Malaysia, New Zealand, Papua New Guinea, Philippines, and the Asian Newly Industrialized Countries.

NOTES: Data may be revised in each of the 3 months after original publication.

Regions are not mutually exclusive.

Dash = Not available

Table 9. U.S. terms of trade indexes and percent changes by locality: April 2019 to April 2020¹
 [December 2017=100, unless otherwise noted]

Description	Index		Percent change				
	Mar. 2020	Apr. 2020	Annual	Monthly			
			Apr. 2019 to Apr. 2020	Dec. 2019 to Jan. 2020	Jan. 2020 to Feb. 2020	Feb. 2020 to Mar. 2020	Mar. 2020 to Apr. 2020
Industrialized Countries²	100.3	101.4	2.7	0.8	0.3	-0.1	1.1
Canada	106.3	115.3	22.0	1.0	3.2	2.4	8.5
European Union	100.1	98.4	-4.6	0.1	-0.9	-1.8	-1.7
Germany	107.0	105.7	0.4	0.5	-0.5	0.5	-1.2
Latin America³	103.3	99.4	-3.5	1.3	-2.3	1.6	-3.8
Mexico	101.1	96.2	-5.5	1.3	-2.2	-0.1	-4.8
Pacific Rim⁴	96.6	94.9	-5.8	0.5	-1.1	-2.7	-1.8
China	95.5	93.4	-7.2	-0.2	-0.8	-2.7	-2.2
Japan	94.6	91.2	-8.3	-0.2	-1.1	-3.4	-3.6

¹ Terms of trade indexes are derived by dividing the export price index by the corresponding import price index and multiplying by 100.

² Western Europe, Canada, Japan, Australia, New Zealand, and South Africa.

³ Mexico, Central America, South America, and the Caribbean.

⁴ China, Japan, Australia, Brunei, Indonesia, Macao, Malaysia, New Zealand, Papua New Guinea, Philippines, and the Asian Newly Industrialized Countries.

NOTES: Data may be revised in each of the 3 months after original publication.

Regions are not mutually exclusive.

Dash = Not available

Table 10. U.S. international price indexes and percent changes for selected transportation services: April 2019 to April 2020

[2000=100, unless otherwise noted]

Description	Relative importance Mar. 2020 ¹	Index		Percent change				
		Mar. 2020	Apr. 2020	Annual Apr. 2019 to Apr. 2020	Monthly			
					Dec. 2019 to Jan. 2020	Jan. 2020 to Feb. 2020	Feb. 2020 to Mar. 2020	Mar. 2020 to Apr. 2020
Air Freight								
Import Air Freight	100.000	180.7	250.2	40.4	-2.3	-1.0	2.5	38.5
Europe (Dec. 2003=100).....	26.633	143.6	218.2	46.0	0.6	0.2	-0.6	51.9
Asia.....	59.410	171.9	242.7	46.1	-4.4	-1.7	4.6	41.2
Export Air Freight	100.000	164.4	160.2	-3.3	2.7	-1.4	-1.0	-2.6
Europe (Dec. 2006=100).....	32.017	154.6	150.8	-0.3	3.1	-1.1	-0.5	-2.5
Inbound Air Freight	100.000	164.3	202.9	22.5	-0.9	-0.9	0.9	23.5
Europe (Dec. 2003=100).....	28.443	132.4	165.8	21.5	1.3	-0.2	-0.2	25.2
Asia.....	57.353	151.9	194.1	26.9	-2.6	-1.3	1.6	27.8
Outbound Air Freight	100.000	153.2	157.2	8.9	1.6	27.2	-19.6	2.6
Europe (Dec. 2003=100).....	31.822	161.4	176.4	14.8	2.3	-0.6	0.1	9.3
Asia.....	47.995	152.2	151.3	10.0	1.3	59.0	-33.0	-0.6
Air Passenger Fares								
Import Air Passenger Fares	100.000	155.5	136.3	-16.2	-8.7	0.2	-9.8	-12.3
Europe.....	45.809	181.5	134.4	-26.3	0.8	0.6	-12.9	-26.0
Asia.....	20.941	112.3	125.5	0.6	-14.7	-7.2	-7.4	11.8
Latin America/Caribbean.....	8.817	150.7	144.8	-6.9	-19.2	8.7	-7.4	-3.9
Export Air Passenger Fares	100.000	137.1	126.3	-14.1	7.4	-9.3	-4.2	-7.9
Europe.....	29.012	171.7	143.5	-24.3	-0.9	-2.0	-4.3	-16.4
Asia.....	25.473	120.9	112.6	-9.7	14.4	-13.9	-5.0	-6.9
Latin America/Caribbean.....	27.062	150.7	148.8	-7.1	11.9	-13.0	-2.3	-1.3

¹ Relative importance figures are based on 2018 trade values.

NOTES: Data may be revised in each of the 3 months after original publication.

Dash = Not available

TECHNICAL NOTE

Import and Export Goods and Services Price Indexes - All indexes use a modified Laspeyres formula and are not seasonally adjusted. Price indexes are reweighted annually, with a 2-year lag in the weights. Published series use a base year of 2000=100 where possible. More detailed index series and additional information may be obtained at www.bls.gov/mxp or by calling (202) 691-7101.

Merchandise Goods Classification Systems - The merchandise price indexes are published using three classification systems. Items are classified by end use according to the Bureau of Economic Analysis Classification System, by industry according to the North American Industry Classification System (NAICS), and by product category according to the Harmonized System (HS). While classification by end use and product category are self-explanatory, some notes are in order for classifying items by industry. In the NAICS imports and exports tables, items are classified by output industry, not input industry. As an example, NAICS import index 326 (plastics and rubber products manufacturing) includes outputs such as manufactured plastic rather than inputs such as petroleum. The NAICS classification structure also matches the classification system used by the Producer Price Index (PPI) to produce the NAICS primary products indexes.

Import Price Goods Indexes - Items are classified by the Harmonized Tariff Schedule of the United States Annotated (TSUSA). Import prices are based on U.S. dollar prices paid by the U.S. importer. The prices are generally either "free on board" (f.o.b.) foreign port or "cost, insurance, and freight" (c.i.f.) U.S. port transaction prices, depending on the practices of the individual industry. The index for crude petroleum is calculated from data collected by the U.S. Department of Energy.

Export Price Goods Indexes - Items are classified by the Harmonized Schedule B classification system of the U.S. Bureau of the Census. The prices used are generally either "free alongside ship" (f.a.s.) factory or "free on board" (f.o.b.) transaction prices, depending on the practices of the individual industry. Prices used in the grain index, excluding rice, are obtained from the U.S. Department of Agriculture.

Services Price Indexes - Indexes for import and export air passenger fares calculate changes in the average revenue received per passenger by foreign carriers from U.S. residents and by U.S. carriers from foreign residents, respectively. Data are obtained from an airline consulting service and report on tickets sold by travel agencies, travel websites, and directly by the airlines. Taxes and fees are included in both the import and export air passenger fares indexes. Import air passenger fares data have used the airline consulting service source since September 2008. Before April 2018, the export air passenger fares data were collected directly by BLS from U.S. airlines. The air freight indexes are calculated from data collected directly from airlines. These data exclude mail and passenger baggage. The scope of the service being priced is the movement of freight from airport to airport only, and does not include any ground transportation or port service. The air freight indexes are presented using two definitions: balance of payments (which represents transactions between U.S. and foreign residents) and international (which represents transactions inbound to and outbound from the United States.) Fact sheets specifying detailed information for each services industry are available at www.bls.gov/mxp under "MXP Publications."

Import Price Indexes by Locality of Origin - Prices used in these indexes are a subset of the data collected for the import price indexes. The indexes are specific to a country, region, or grouping and, beginning with January 2002, are based on the North American Industry Classification System (NAICS) covering goods-producing industries. Nonmanufactured goods are defined as NAICS 11 and 21, and manufactured goods are defined as NAICS 31-33.

Export Price Indexes by Locality of Destination - Prices used in these indexes are a subset of the data collected for the export price indexes. The indexes are specific to a country, region, or grouping and are based on the North American Industry Classification System (NAICS) covering goods-producing industries. Nonmanufactured goods are defined as NAICS 11 and 21, and manufactured goods are defined as NAICS 31-33.

Terms of Trade Indexes - Terms of trade indexes measure the relative price of exports in terms of import prices for a specific country, region, or grouping. The indexes are calculated as one country, region, or grouping's all-export goods price index divided by the corresponding all-import goods price index on a scale of 100.

Relative Importance - A relative importance is a specific index's price-updated value share (expressed as a percentage) of overall imports or exports at a specific point in time. Relative importance values are affected by the trade weights at the point indexes are reweighted and index changes relative to other indexes since the reweight point. If an index is rising in value relative to other indexes over time, the relative importance will increase as well.

Revision Policy - To reflect the availability of late reports and corrections by respondents, monthly data may be revised in each of the 3 months after original publication. After 3 months, no further data revisions take place. For example, data first published in the January release will be subject to revision in the releases for February, March, and April.

Rounding Policy - Index values are rounded to the tenth decimal place after being calculated. All percent changes are then derived from the rounded index values and subsequently rounded to the tenth decimal place.

Uses of the Data - The primary use of the indexes is to deflate trade statistics, notably the foreign trade sector of the National Income and Product Accounts (NIPA) constructed by the Department of Commerce. Other published indexes are useful for general market analysis. For trade in international services, balance of payments indexes are used for deflating NIPA, while international indexes are more appropriate for market analysis.

Email Subscription - The U.S. import and export price indexes news release is available through an email subscription service at www.bls.gov/bls/list.htm.

Additional Information - More detailed data are available on the Import/Export Price Indexes home page at www.bls.gov/mxp. For import and export price indexes data requests, send an email to mxpinfo@bls.gov.

Information from this release will be made available to sensory impaired individuals upon request. Voice phone: (202)-691-5200; Federal Relay Service: 1-(800)-877-8339.