

FOR RELEASE AT 8:30 AM EDT, WEDNESDAY, OCTOBER 19, 2022

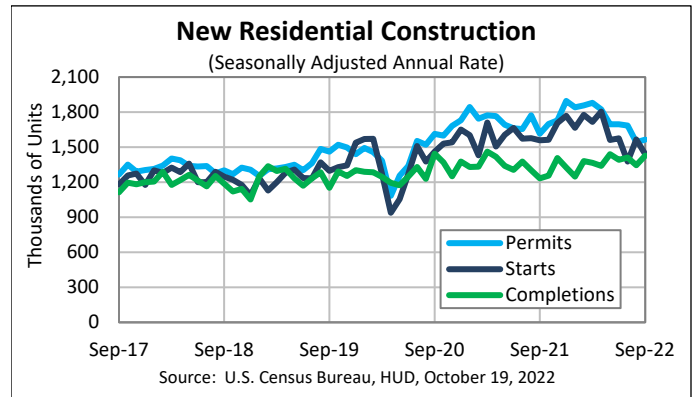
MONTHLY NEW RESIDENTIAL CONSTRUCTION, SEPTEMBER 2022

Release Number: CB22-174

Statement Regarding Natural Disasters: For information on the impact of natural disasters, including hurricanes, on the compilation of this report, please see the [Natural Disaster FAQs](#).

October 19, 2022 - The U.S. Census Bureau and the U.S. Department of Housing and Urban Development jointly announced the following new residential construction statistics for September 2022:

| NEW RESIDENTIAL CONSTRUCTION SEPTEMBER 2022 | |
|---|-----------|
| Building Permits: | 1,564,000 |
| Housing Starts: | 1,439,000 |
| Housing Completions: | 1,427,000 |
| Next Release: November 17, 2022 | |
| Seasonally Adjusted Annual Rate (SAAR) | |
| Source: U.S. Census Bureau, HUD, October 19, 2022 | |



Building Permits

Privately-owned housing units authorized by building permits in September were at a seasonally adjusted annual rate of 1,564,000. This is 1.4 percent above the revised August rate of 1,542,000, but is 3.2 percent below the September 2021 rate of 1,615,000. Single-family authorizations in September were at a rate of 872,000; this is 3.1 percent below the revised August figure of 900,000. Authorizations of units in buildings with five units or more were at a rate of 644,000 in September.

Housing Starts

Privately-owned housing starts in September were at a seasonally adjusted annual rate of 1,439,000. This is 8.1 percent (± 14.9 percent)* below the revised August estimate of 1,566,000 and is 7.7 percent (± 11.5 percent)* below the September 2021 rate of 1,559,000. Single-family housing starts in September were at a rate of 892,000; this is 4.7 percent (± 10.7 percent)* below the revised August figure of 936,000. The September rate for units in buildings with five units or more was 530,000.

Housing Completions

Privately-owned housing completions in September were at a seasonally adjusted annual rate of 1,427,000. This is 6.1 percent (± 11.0 percent)* above the revised August estimate of 1,345,000 and is 15.7 percent (± 13.1 percent) above the September 2021 rate of 1,233,000. Single-family housing completions in September were at a rate of 1,049,000; this is 3.2 percent (± 8.8 percent)* above the revised August rate of 1,016,000. The September rate for units in buildings with five units or more was 376,000.

Data Inquiries

Economic Indicators Division, Residential Construction Branch
301-763-5160
eid.rcb.customer.service@census.gov

Media Inquiries

Public Information Office
301-763-3030
pio@census.gov



U.S. Department of Commerce
U.S. CENSUS BUREAU
[census.gov](https://www.census.gov)



The October report is scheduled for release on November 17, 2022. View the full schedule in the Economic Briefing Room: <www.census.gov/economic-indicators/>. The full text and tables for this release can be found at <www.census.gov/construction/nrc/>.

EXPLANATORY NOTES

In interpreting changes in the statistics in this release, note that month-to-month changes in seasonally adjusted statistics often show movements which may be irregular. It may take three months to establish an underlying trend for building permit authorizations, six months for total starts, and six months for total completions. The statistics in Table 1 in this release are based on a non-probability sample and not subject to sampling error. They are, however, still subject to nonsampling error. On average the total quantity response rate for these estimates is 75.9%. The statistics in Tables 2-5 in this release are estimated from sample surveys and are subject to sampling variability as well as nonsampling error including bias and variance from response, nonreporting, and undercoverage. Estimated relative standard errors of the most recent data are shown in the tables. Whenever a statement such as “2.5 percent (± 3.2 percent) above” appears in the text, this indicates the range (-0.7 to +5.7 percent) in which the actual percentage change is likely to have occurred. All ranges given for percentage changes are 90 percent confidence intervals and account only for sampling variability. If a range does not contain zero, the change is statistically significant. If it does contain zero, the change is not statistically significant; that is, it is uncertain whether there was an increase or decrease. The same policies apply to the confidence intervals for percentage changes shown in the tables. On average, the preliminary seasonally adjusted estimates of total building permits, housing starts and housing completions are revised 2.7 percent or less. Explanations of confidence intervals and sampling variability can be found on our website. <www.census.gov/construction/nrc/how_the_data_are_collected/>

API

The Census Bureau’s application programming interface lets developers create custom apps to reach new users and makes key demographic, socio-economic and housing statistics more accessible than ever before.

<www.census.gov/developers/>

FRED Mobile App



Receive the latest updates on the nation’s key economic indicators by downloading the FRED App <<https://fred.stlouisfed.org/fred-mobile/>> for both Apple and Android devices. FRED, the signature database of the Federal Reserve Bank of St. Louis, now incorporates the Census Bureau’s 13 economic indicators.

###

* The 90 percent confidence interval includes zero. In such cases, there is insufficient statistical evidence to conclude that the actual change is different from zero.

Data Inquiries

Economic Indicators Division, Residential Construction Branch
301-763-5160
eid.rcb.customer.service@census.gov

Media Inquiries

Public Information Office
301-763-3030
pio@census.gov



U.S. Department of Commerce
U.S. CENSUS BUREAU
census.gov



New Privately-Owned Housing Units Authorized in Permit-Issuing Places

(Thousands of Units. Detail may not add to total because of rounding.)

Table 1a - Seasonally adjusted annual rate

| Period | United States | | | | Northeast | | Midwest | | South | | West | |
|--------------------------------|---------------|------------|--------------|-----------------|------------|-----------|------------|------------|------------|------------|------------|------------|
| | Total | 1 unit | 2 to 4 units | 5 units or more | Total | 1 unit | Total | 1 unit | Total | 1 unit | Total | 1 unit |
| 2021 | | | | | | | | | | | | |
| September | 1,615 | 1,054 | 48 | 513 | 121 | 54 | 215 | 128 | 879 | 630 | 400 | 242 |
| October | 1,698 | 1,077 | 52 | 569 | 136 | 61 | 233 | 134 | 894 | 643 | 435 | 239 |
| November | 1,729 | 1,111 | 48 | 570 | 151 | 60 | 214 | 143 | 918 | 653 | 446 | 255 |
| December | 1,896 | 1,118 | 68 | 710 | 272 | 74 | 260 | 152 | 941 | 657 | 423 | 235 |
| 2022 | | | | | | | | | | | | |
| January | 1,841 | 1,197 | 57 | 587 | 151 | 71 | 270 | 158 | 958 | 679 | 462 | 289 |
| February | 1,857 | 1,204 | 54 | 599 | 179 | 75 | 249 | 146 | 954 | 696 | 475 | 287 |
| March | 1,879 | 1,163 | 56 | 660 | 185 | 66 | 260 | 143 | 972 | 679 | 462 | 275 |
| April | 1,823 | 1,109 | 56 | 658 | 163 | 62 | 250 | 133 | 989 | 671 | 421 | 243 |
| May | 1,695 | 1,051 | 55 | 589 | 128 | 61 | 230 | 132 | 941 | 624 | 396 | 234 |
| June | 1,696 | 970 | 50 | 676 | 151 | 52 | 198 | 119 | 922 | 595 | 425 | 204 |
| July | 1,685 | 932 | 52 | 701 | 164 | 61 | 215 | 122 | 927 | 559 | 379 | 190 |
| August (r) | 1,542 | 900 | 47 | 595 | 138 | 56 | 202 | 111 | 826 | 540 | 376 | 193 |
| September (p) | 1,564 | 872 | 48 | 644 | 125 | 58 | 210 | 109 | 852 | 529 | 377 | 176 |
| Percent Change ¹ | | | | | | | | | | | | |
| Sep. 2022 from Aug. 2022 | 1.4% | -3.1% | 2.1% | 8.2% | -9.4% | 3.6% | 4.0% | -1.8% | 3.1% | -2.0% | 0.3% | -8.8% |
| Sep. 2022 from Sep. 2021 | -3.2% | -17.3% | 0.0% | 25.5% | 3.3% | 7.4% | -2.3% | -14.8% | -3.1% | -16.0% | -5.8% | -27.3% |

Table 1b - Not seasonally adjusted

| Period | United States | | | | Northeast | | Midwest | | South | | West | |
|--|---------------|--------------|--------------|-----------------|--------------|--------------|-------------|---------------|-------------|--------------|--------------|--------------|
| | Total | 1 unit | 2 to 4 units | 5 units or more | Total | 1 unit | Total | 1 unit | Total | 1 unit | Total | 1 unit |
| 2020 Annual | 1,471.1 | 979.4 | 47.2 | 444.5 | 134.8 | 56.3 | 202.1 | 128.0 | 776.3 | 568.5 | 358.0 | 226.7 |
| 2021 Annual | 1,737.0 | 1,115.4 | 52.9 | 568.8 | 164.8 | 65.0 | 227.6 | 142.9 | 917.5 | 655.2 | 427.1 | 252.2 |
| 2021 Year to date | 1,310.6 | 865.8 | 39.2 | 405.7 | 115.6 | 49.7 | 171.0 | 110.7 | 703.5 | 507.4 | 320.5 | 197.9 |
| 2022 Year to date | 1,314.6 | 799.7 | 39.9 | 474.9 | 112.4 | 47.0 | 173.6 | 98.8 | 713.3 | 474.2 | 315.3 | 179.8 |
| Year to date percent change¹ | 0.3% | -7.6% | 1.8% | 17.1% | -2.8% | -5.4% | 1.5% | -10.8% | 1.4% | -6.5% | -1.6% | -9.2% |
| 2021 | | | | | | | | | | | | |
| September | 136.2 | 88.2 | 4.2 | 43.8 | 10.5 | 4.9 | 20.4 | 12.1 | 72.8 | 51.4 | 32.4 | 19.8 |
| October | 137.7 | 86.4 | 4.6 | 46.7 | 10.6 | 5.2 | 22.1 | 12.0 | 70.3 | 50.8 | 34.7 | 18.4 |
| November | 133.4 | 81.1 | 3.9 | 48.4 | 12.7 | 4.8 | 17.0 | 10.7 | 69.2 | 47.6 | 34.5 | 18.1 |
| December | 155.3 | 82.1 | 5.2 | 68.0 | 25.9 | 5.3 | 17.6 | 9.6 | 74.5 | 49.5 | 37.4 | 17.7 |
| 2022 | | | | | | | | | | | | |
| January | 132.3 | 83.4 | 3.8 | 45.1 | 10.3 | 4.6 | 14.5 | 7.9 | 75.6 | 51.7 | 31.9 | 19.1 |
| February | 131.5 | 87.1 | 3.8 | 40.6 | 11.4 | 4.6 | 13.4 | 8.3 | 72.4 | 53.6 | 34.2 | 20.6 |
| March | 169.0 | 107.4 | 5.0 | 56.7 | 15.9 | 5.3 | 21.6 | 12.3 | 89.5 | 64.0 | 42.0 | 25.8 |
| April | 156.6 | 98.2 | 4.8 | 53.6 | 12.8 | 5.3 | 23.3 | 12.9 | 84.5 | 58.0 | 36.0 | 22.1 |
| May | 149.0 | 95.4 | 4.7 | 48.9 | 10.9 | 5.8 | 22.2 | 13.0 | 81.2 | 55.3 | 34.6 | 21.3 |
| June | 157.2 | 91.5 | 4.8 | 60.9 | 15.2 | 5.3 | 19.1 | 12.1 | 82.9 | 53.9 | 40.0 | 20.2 |
| July | 134.4 | 75.6 | 4.2 | 54.6 | 13.0 | 5.4 | 17.8 | 10.4 | 73.4 | 43.9 | 30.2 | 15.9 |
| August (r) | 139.0 | 81.0 | 4.5 | 53.4 | 11.4 | 5.2 | 19.9 | 11.0 | 75.7 | 47.1 | 32.0 | 17.7 |
| September (p) | 129.6 | 70.9 | 4.2 | 54.5 | 9.9 | 5.3 | 20.0 | 10.3 | 69.3 | 41.4 | 30.4 | 14.0 |

p Preliminary

r Revised

S Does not meet publication standards because tests for identifiable and stable seasonality do not meet reliability standards

X Not applicable

¹ Computed using unrounded data

Note: Year-to-date permits estimates reflect revisions not distributed to months.

Source: U.S. Census Bureau and U.S. Department of Housing and Urban Development, New Residential Construction, October 19, 2022. Additional information on the survey methodology may be found at www.census.gov/construction/nrc/how_the_data_are_collected/.

New Privately-Owned Housing Units Authorized, but Not Started, at End of Period

(Thousands of Units. Detail may not add to total because of rounding.)

Table 2a - Seasonally adjusted

| Period | United States | | | | Northeast | | Midwest | | South | | West | |
|---|---------------|--------------|--------------|-----------------|--------------|--------------|---------------|-------------|--------------|--------------|--------------|---------------|
| | Total | 1 unit | 2 to 4 units | 5 units or more | Total | 1 unit | Total | 1 unit | Total | 1 unit | Total | 1 unit |
| 2021 | | | | | | | | | | | | |
| September | 257 | 146 | S | 108 | 24 | 11 | 28 | 13 | 143 | 90 | 62 | 32 |
| October | 266 | 152 | S | 111 | 24 | 12 | 29 | 14 | 149 | 94 | 64 | 32 |
| November | 266 | 149 | S | 114 | 26 | 13 | 27 | 16 | 150 | 88 | 63 | 32 |
| December | 263 | 140 | S | 120 | 33 | 14 | 25 | 12 | 143 | 84 | 62 | 30 |
| 2022 | | | | | | | | | | | | |
| January | 274 | 149 | S | 122 | 37 | 15 | 25 | 14 | 150 | 90 | 62 | 30 |
| February | 276 | 151 | S | 121 | 37 | 14 | 26 | 14 | 149 | 92 | 64 | 31 |
| March | 290 | 152 | S | 134 | 38 | 13 | 24 | 14 | 160 | 94 | 68 | 31 |
| April | 288 | 151 | S | 132 | 40 | 14 | 25 | 14 | 158 | 94 | 65 | 29 |
| May | 285 | 147 | S | 134 | 37 | 13 | 24 | 14 | 156 | 91 | 68 | 29 |
| June | 286 | 143 | S | 139 | 39 | 13 | 23 | 12 | 151 | 89 | 73 | 29 |
| July (r) | 300 | 148 | S | 148 | 39 | 13 | 23 | 13 | 160 | 91 | 78 | 31 |
| August (r) | 291 | 144 | S | 143 | 38 | 14 | 23 | 13 | 157 | 89 | 73 | 28 |
| September (p) | 291 | 144 | S | 144 | 38 | 16 | 23 | 13 | 160 | 87 | 70 | 28 |
| Average RSE (%) ¹ | 4 | 5 | X | 8 | 15 | 21 | 10 | 11 | 6 | 7 | 9 | 9 |
| Percent Change ² | | | | | | | | | | | | |
| Sep. 2022 from Aug. 2022 | 0.0% | 0.0% | S | 0.7% | 0.0% | 14.3% | 0.0% | 0.0% | 1.9% | -2.2% | -4.1% | 0.0% |
| 90 percent confidence interval ³ | ± 3.3 | ± 4.3 | X | ± 4.9 | ± 9.8 | ± 23.1 | ± 12.1 | ± 17.3 | ± 4.1 | ± 4.9 | ± 5.5 | ± 5.8 |
| Sep. 2022 from Sep. 2021 | 13.2% | -1.4% | S | 33.3% | 58.3% | 45.5% | -17.9% | 0.0% | 11.9% | -3.3% | 12.9% | -12.5% |
| 90 percent confidence interval ³ | ± 13.5 | ± 8.0 | X | ± 30.0 | ± 23.8 | ± 56.7 | ± 24.0 | ± 41.3 | ± 12.5 | ± 10.6 | ± 29.8 | ± 10.2 |

Table 2b - Not seasonally adjusted

| Period | United States | | | | Northeast | | Midwest | | South | | West | |
|------------------------------------|---------------|--------------|--------------|-----------------|-------------|-------------|-------------|-------------|--------------|-------------|-------------|-------------|
| | Total | 1 unit | 2 to 4 units | 5 units or more | Total | 1 unit | Total | 1 unit | Total | 1 unit | Total | 1 unit |
| 2021 | | | | | | | | | | | | |
| September | 254.0 | 145.2 | 2.6 | 106.3 | 21.9 | 10.6 | 27.2 | 12.3 | 144.4 | 90.5 | 60.6 | 31.8 |
| October | 259.4 | 147.4 | 2.6 | 109.4 | 22.0 | 11.4 | 29.0 | 12.9 | 146.8 | 92.0 | 61.6 | 31.1 |
| November | 249.9 | 138.7 | 2.6 | 108.6 | 23.2 | 11.8 | 25.5 | 13.0 | 141.7 | 84.9 | 59.5 | 28.9 |
| December | 267.7 | 138.6 | 3.2 | 125.9 | 35.3 | 13.0 | 23.2 | 11.0 | 144.6 | 83.5 | 64.6 | 31.1 |
| 2022 | | | | | | | | | | | | |
| January | 270.0 | 141.5 | 3.3 | 125.2 | 37.4 | 13.9 | 22.5 | 11.8 | 148.5 | 86.9 | 61.6 | 28.9 |
| February | 273.2 | 147.0 | 4.3 | 121.9 | 39.6 | 14.1 | 23.6 | 13.1 | 146.8 | 89.7 | 63.2 | 30.1 |
| March | 298.4 | 158.0 | 4.3 | 136.1 | 40.6 | 14.2 | 25.6 | 15.3 | 160.9 | 95.3 | 71.3 | 33.2 |
| April | 293.1 | 155.0 | 4.8 | 133.3 | 40.5 | 13.9 | 29.0 | 16.6 | 156.9 | 94.9 | 66.7 | 29.7 |
| May | 289.0 | 151.4 | 4.2 | 133.4 | 38.6 | 13.8 | 24.8 | 15.1 | 156.8 | 93.2 | 68.7 | 29.3 |
| June | 294.6 | 149.1 | 4.3 | 141.2 | 40.5 | 13.9 | 22.5 | 12.9 | 156.3 | 91.4 | 75.3 | 30.9 |
| July (r) | 295.9 | 147.4 | 3.7 | 144.8 | 39.1 | 13.3 | 22.2 | 12.5 | 158.5 | 90.8 | 76.1 | 30.8 |
| August (r) | 290.5 | 145.8 | 3.7 | 141.0 | 36.1 | 14.2 | 23.1 | 12.3 | 158.7 | 90.5 | 72.6 | 28.8 |
| September (p) | 290.1 | 145.3 | 3.1 | 141.7 | 34.7 | 15.7 | 23.7 | 13.8 | 162.1 | 87.7 | 69.5 | 28.1 |
| Average RSE (%) ¹ | 4 | 5 | 25 | 8 | 15 | 21 | 10 | 11 | 6 | 7 | 9 | 9 |

p Preliminary

r Revised

S Does not meet publication standards because tests for identifiable and stable seasonality do not meet reliability standards

X Not applicable

¹ Average relative standard error for the latest 6-month period

² Computed using unrounded data

³ See the Explanatory Notes in the accompanying text for an explanation of 90 percent confidence intervals

Note: These data represent the number of housing units authorized in all months up to and including the last day of the reporting period and not started as of that date without regard to the months of original permit issuance. Cancelled, abandoned, expired, and revoked permits are excluded.

Source: U.S. Census Bureau and U.S. Department of Housing and Urban Development, New Residential Construction, October 19, 2022.

Additional information on the survey methodology may be found at <www.census.gov/construction/nrc/how_the_data_are_collected/>.

New Privately-Owned Housing Units Started

(Thousands of Units. Detail may not add to total because of rounding.)

Table 3a - Seasonally adjusted annual rate

| Period | United States | | | | Northeast | | Midwest | | South | | West | |
|---|---------------|---------------|--------------|-----------------|---------------|---------------|---------------|---------------|---------------|---------------|---------------|---------------|
| | Total | 1 unit | 2 to 4 units | 5 units or more | Total | 1 unit | Total | 1 unit | Total | 1 unit | Total | 1 unit |
| 2021 | | | | | | | | | | | | |
| September | 1,559 | 1,094 | S | 455 | 127 | 69 | 204 | 132 | 809 | 627 | 419 | 266 |
| October | 1,563 | 1,079 | S | 474 | 114 | 53 | 214 | 130 | 817 | 624 | 418 | 272 |
| November | 1,706 | 1,220 | S | 469 | 114 | 63 | 216 | 137 | 946 | 726 | 430 | 294 |
| December | 1,768 | 1,212 | S | 553 | 141 | 69 | 335 | 212 | 901 | 670 | 391 | 261 |
| 2022 | | | | | | | | | | | | |
| January | 1,666 | 1,157 | S | 499 | 105 | 48 | 196 | 142 | 919 | 661 | 446 | 306 |
| February | 1,777 | 1,213 | S | 532 | 134 | 71 | 234 | 157 | 999 | 681 | 410 | 304 |
| March | 1,716 | 1,191 | S | 511 | 211 | 64 | 239 | 161 | 846 | 674 | 420 | 292 |
| April | 1,805 | 1,173 | S | 619 | 133 | 52 | 219 | 154 | 1,025 | 679 | 428 | 288 |
| May | 1,562 | 1,073 | S | 459 | 130 | 55 | 230 | 141 | 860 | 625 | 342 | 252 |
| June | 1,575 | 1,013 | S | 554 | 127 | 47 | 206 | 140 | 875 | 617 | 367 | 209 |
| July (r) | 1,377 | 900 | S | 462 | 168 | 73 | 161 | 105 | 708 | 513 | 340 | 209 |
| August (r) | 1,566 | 936 | S | 610 | 168 | 62 | 187 | 130 | 855 | 523 | 356 | 221 |
| September (p) | 1,439 | 892 | S | 530 | 147 | 58 | 182 | 112 | 738 | 536 | 372 | 186 |
| Average RSE (%) ¹ | 6 | 5 | X | 12 | 16 | 18 | 11 | 10 | 7 | 7 | 13 | 11 |
| Percent Change ² | | | | | | | | | | | | |
| Sep. 2022 from Aug. 2022 | -8.1% | -4.7% | S | -13.1% | -12.5% | -6.5% | -2.7% | -13.8% | -13.7% | 2.5% | 4.5% | -15.8% |
| 90 percent confidence interval ³ | ± 14.9 | ± 10.7 | X | ± 31.5 | ± 40.8 | ± 37.2 | ± 26.6 | ± 19.6 | ± 22.6 | ± 16.4 | ± 24.2 | ± 17.5 |
| Sep. 2022 from Sep. 2021 | -7.7% | -18.5% | S | 16.5% | 15.7% | -15.9% | -10.8% | -15.2% | -8.8% | -14.5% | -11.2% | -30.1% |
| 90 percent confidence interval ³ | ± 11.5 | ± 8.1 | X | ± 37.4 | ± 29.8 | ± 24.2 | ± 23.9 | ± 12.7 | ± 15.0 | ± 12.9 | ± 20.9 | ± 14.1 |

Table 3b - Not seasonally adjusted

| Period | United States | | | | Northeast | | Midwest | | South | | West | |
|--|---------------|--------------|--------------|-----------------|-------------|---------------|--------------|--------------|-------------|--------------|--------------|--------------|
| | Total | 1 unit | 2 to 4 units | 5 units or more | Total | 1 unit | Total | 1 unit | Total | 1 unit | Total | 1 unit |
| 2020 Annual | 1,379.6 | 990.5 | 12.3 | 376.8 | 111.5 | 60.2 | 191.6 | 135.6 | 735.5 | 553.1 | 341.0 | 241.5 |
| 2021 Annual | 1,601.0 | 1,127.2 | 11.7 | 462.1 | 136.5 | 67.6 | 215.5 | 148.2 | 848.1 | 643.7 | 400.8 | 267.7 |
| RSE (%) | 2 | 2 | 19 | 7 | 7 | 7 | 2 | 2 | 2 | 3 | 4 | 3 |
| 2022 Year to date | 1,212.4 | 860.9 | 9.2 | 342.2 | 107.3 | 53.1 | 156.8 | 112.2 | 642.7 | 489.9 | 305.7 | 205.8 |
| 2022 Year to date | 1,227.7 | 812.3 | 13.3 | 402.0 | 111.5 | 44.5 | 154.9 | 103.2 | 665.9 | 471.6 | 295.4 | 193.0 |
| RSE (%) | 3 | 1 | 22 | 7 | 4 | 7 | 3 | 4 | 2 | 2 | 7 | 3 |
| Year to date percent change² | 1.3% | -5.6% | 44.7% | 17.5% | 3.9% | -16.2% | -1.2% | -7.9% | 3.6% | -3.7% | -3.4% | -6.2% |
| 90 percent confidence interval ³ | ± 3.5 | ± 3.7 | ± 56.1 | ± 10.1 | ± 10.5 | ± 5.5 | ± 5.7 | ± 7.7 | ± 3.7 | ± 4.8 | ± 8.5 | ± 4.1 |
| 2021 | | | | | | | | | | | | |
| September | 135.2 | 93.5 | 0.9 | 40.8 | 11.6 | 6.4 | 19.0 | 12.6 | 68.3 | 52.0 | 36.2 | 22.6 |
| October | 133.6 | 91.6 | 0.9 | 41.1 | 10.0 | 4.8 | 20.2 | 13.0 | 67.8 | 51.1 | 35.5 | 22.8 |
| November | 130.8 | 91.2 | 1.4 | 38.1 | 9.1 | 5.0 | 17.0 | 10.6 | 71.7 | 53.7 | 33.0 | 21.9 |
| December | 124.2 | 83.4 | 0.2 | 40.7 | 10.0 | 4.8 | 21.5 | 12.4 | 66.0 | 49.0 | 26.7 | 17.2 |
| 2022 | | | | | | | | | | | | |
| January | 121.0 | 81.6 | 0.8 | 38.6 | 7.4 | 3.1 | 11.0 | 6.9 | 69.5 | 49.5 | 33.0 | 22.2 |
| February | 126.1 | 85.0 | 2.4 | 38.8 | 8.2 | 3.6 | 13.2 | 7.5 | 75.1 | 51.9 | 29.7 | 22.0 |
| March | 142.6 | 100.1 | 1.2 | 41.3 | 16.8 | 5.0 | 17.5 | 11.1 | 72.7 | 58.7 | 35.6 | 25.3 |
| April | 164.3 | 109.7 | 1.1 | 53.5 | 11.8 | 4.8 | 19.7 | 14.1 | 92.7 | 62.9 | 40.0 | 27.9 |
| May | 140.6 | 96.7 | 2.7 | 41.2 | 11.7 | 4.9 | 23.0 | 15.0 | 76.0 | 54.9 | 29.9 | 21.9 |
| June | 144.9 | 96.9 | 0.7 | 47.4 | 11.6 | 4.8 | 20.7 | 15.0 | 79.7 | 57.6 | 33.1 | 19.5 |
| July (r) | 123.7 | 83.2 | 1.3 | 39.2 | 15.6 | 7.5 | 15.5 | 10.8 | 62.5 | 46.0 | 30.0 | 18.9 |
| August (r) | 140.1 | 83.6 | 1.8 | 54.7 | 15.0 | 5.5 | 17.6 | 12.5 | 75.3 | 45.5 | 32.1 | 20.0 |
| September (p) | 124.4 | 75.4 | 1.5 | 47.4 | 13.3 | 5.3 | 16.6 | 10.4 | 62.5 | 44.4 | 31.9 | 15.3 |
| Average RSE (%) ¹ | 6 | 5 | 38 | 12 | 16 | 18 | 11 | 10 | 7 | 7 | 13 | 11 |

p Preliminary

r Revised

S Does not meet publication standards because tests for identifiable and stable seasonality do not meet reliability standards

X Not applicable

¹ Average relative standard error for the latest 6-month period

² Computed using unrounded data

³ See the Explanatory Notes in the accompanying text for an explanation of 90 percent confidence intervals

Source: U.S. Census Bureau and U.S. Department of Housing and Urban Development, New Residential Construction, October 19, 2022. Additional information on the survey methodology may be found at www.census.gov/construction/nrc/how_the_data_are_collected/.

New Privately-Owned Housing Units Under Construction at End of Period

(Thousands of Units. Detail may not add to total because of rounding.)

Table 4a - Seasonally adjusted

| Period | United States | | | | Northeast | | Midwest | | South | | West | |
|---|---------------|--------------|--------------|-----------------|--------------|--------------|--------------|--------------|--------------|--------------|--------------|--------------|
| | Total | 1 unit | 2 to 4 units | 5 units or more | Total | 1 unit | Total | 1 unit | Total | 1 unit | Total | 1 unit |
| 2021 | | | | | | | | | | | | |
| September | 1,437 | 720 | S | 704 | 204 | 62 | 179 | 101 | 656 | 370 | 398 | 187 |
| October | 1,465 | 731 | S | 722 | 204 | 62 | 183 | 101 | 669 | 378 | 409 | 190 |
| November | 1,493 | 755 | S | 725 | 204 | 63 | 185 | 102 | 687 | 396 | 417 | 194 |
| December | 1,525 | 770 | S | 742 | 202 | 62 | 197 | 107 | 697 | 404 | 429 | 197 |
| 2022 | | | | | | | | | | | | |
| January | 1,553 | 790 | S | 750 | 199 | 61 | 202 | 109 | 713 | 416 | 439 | 204 |
| February | 1,582 | 798 | S | 769 | 201 | 61 | 206 | 111 | 728 | 418 | 447 | 208 |
| March | 1,629 | 812 | S | 803 | 212 | 63 | 216 | 112 | 739 | 424 | 462 | 213 |
| April | 1,668 | 828 | S | 827 | 213 | 61 | 219 | 115 | 765 | 437 | 471 | 215 |
| May | 1,677 | 828 | S | 834 | 216 | 61 | 223 | 113 | 771 | 440 | 467 | 214 |
| June | 1,687 | 827 | S | 845 | 218 | 59 | 225 | 113 | 778 | 444 | 466 | 211 |
| July (r) | 1,682 | 815 | S | 851 | 221 | 60 | 215 | 109 | 776 | 438 | 470 | 208 |
| August (r) | 1,702 | 809 | S | 876 | 222 | 60 | 212 | 108 | 794 | 435 | 474 | 206 |
| September (p) | 1,710 | 800 | S | 893 | 221 | 60 | 214 | 106 | 794 | 429 | 481 | 205 |
| Average RSE (%) ¹ | 3 | 3 | X | 6 | 6 | 6 | 4 | 6 | 3 | 4 | 5 | 5 |
| Percent Change ² | | | | | | | | | | | | |
| Sep. 2022 from Aug. 2022 | 0.5% | -1.1% | S | 1.9% | -0.5% | 0.0% | 0.9% | -1.9% | 0.0% | -1.4% | 1.5% | -0.5% |
| 90 percent confidence interval ³ | ± 0.8 | ± 1.1 | X | ± 1.1 | ± 1.9 | ± 2.0 | ± 2.4 | ± 1.9 | ± 1.1 | ± 1.5 | ± 1.6 | ± 1.6 |
| Sep. 2022 from Sep. 2021 | 19.0% | 11.1% | S | 26.8% | 8.3% | -3.2% | 19.6% | 5.0% | 21.0% | 15.9% | 20.9% | 9.6% |
| 90 percent confidence interval ³ | ± 3.6 | ± 5.1 | X | ± 6.1 | ± 7.3 | ± 5.5 | ± 9.4 | ± 11.7 | ± 6.1 | ± 7.3 | ± 4.3 | ± 4.1 |

Table 4b - Not seasonally adjusted

| Period | United States | | | | Northeast | | Midwest | | South | | West | |
|------------------------------------|----------------|--------------|--------------|-----------------|--------------|-------------|--------------|--------------|--------------|--------------|--------------|--------------|
| | Total | 1 unit | 2 to 4 units | 5 units or more | Total | 1 unit | Total | 1 unit | Total | 1 unit | Total | 1 unit |
| 2021 | | | | | | | | | | | | |
| September | 1,457.2 | 741.9 | 12.8 | 702.4 | 205.2 | 63.8 | 183.7 | 105.8 | 666.3 | 380.7 | 402.1 | 191.6 |
| October | 1,478.6 | 750.0 | 12.3 | 716.3 | 204.7 | 63.5 | 187.8 | 106.8 | 675.9 | 387.3 | 410.2 | 192.4 |
| November | 1,502.2 | 764.1 | 12.9 | 725.1 | 205.3 | 64.2 | 189.0 | 105.7 | 689.7 | 398.9 | 418.2 | 195.3 |
| December | 1,500.0 | 750.5 | 12.7 | 736.9 | 200.1 | 61.3 | 197.7 | 108.1 | 681.8 | 391.0 | 420.5 | 190.1 |
| 2022 | | | | | | | | | | | | |
| January | 1,529.4 | 767.0 | 12.7 | 749.8 | 198.3 | 60.3 | 199.3 | 106.3 | 700.3 | 403.5 | 431.5 | 196.8 |
| February | 1,558.1 | 773.0 | 14.5 | 770.6 | 199.1 | 58.8 | 199.1 | 104.3 | 718.8 | 408.3 | 441.0 | 201.6 |
| March | 1,609.6 | 789.9 | 13.7 | 806.0 | 210.2 | 60.6 | 207.7 | 103.7 | 732.6 | 416.7 | 459.2 | 208.9 |
| April | 1,664.0 | 818.8 | 13.5 | 831.7 | 213.9 | 61.1 | 212.9 | 108.1 | 764.2 | 433.9 | 473.0 | 215.8 |
| May | 1,686.1 | 829.6 | 15.4 | 841.1 | 218.1 | 61.4 | 221.8 | 111.1 | 774.5 | 440.8 | 471.7 | 216.3 |
| June | 1,701.4 | 839.0 | 15.4 | 846.9 | 219.2 | 59.8 | 226.4 | 114.5 | 785.9 | 450.5 | 469.9 | 214.2 |
| July (r) | 1,703.9 | 838.2 | 15.8 | 849.9 | 222.2 | 61.8 | 218.3 | 112.2 | 788.1 | 450.4 | 475.3 | 213.8 |
| August (r) | 1,721.5 | 831.5 | 16.5 | 873.5 | 222.4 | 60.6 | 216.9 | 113.6 | 804.6 | 446.6 | 477.6 | 210.7 |
| September (p) | 1,734.6 | 822.9 | 17.3 | 894.3 | 222.9 | 61.6 | 219.3 | 111.2 | 807.7 | 441.6 | 484.7 | 208.5 |
| Average RSE (%) ¹ | 3 | 3 | 17 | 6 | 6 | 6 | 4 | 6 | 3 | 4 | 5 | 5 |

p Preliminary

r Revised

S Does not meet publication standards because tests for identifiable and stable seasonality do not meet reliability standards

X Not applicable

¹ Average relative standard error for the latest 6-month period

² Computed using unrounded data

³ See the Explanatory Notes in the accompanying text for an explanation of 90 percent confidence intervals

Source: U.S. Census Bureau and U.S. Department of Housing and Urban Development, New Residential Construction, October 19, 2022.

Additional information on the survey methodology may be found at <www.census.gov/construction/nrc/how_the_data_are_collected/>.

New Privately-Owned Housing Units Completed

(Thousands of Units. Detail may not add to total because of rounding.)

Table 5a - Seasonally adjusted annual rate

| Period | United States | | | | Northeast | | Midwest | | South | | West | |
|---|---------------|--------------|--------------|-----------------|--------------|---------------|-------------|--------------|--------------|--------------|---------------|---------------|
| | Total | 1 unit | 2 to 4 units | 5 units or more | Total | 1 unit | Total | 1 unit | Total | 1 unit | Total | 1 unit |
| 2021 | | | | | | | | | | | | |
| September | 1,233 | 944 | S | 282 | 99 | 54 | 196 | 126 | 681 | 551 | 257 | 213 |
| October | 1,256 | 936 | S | 306 | 115 | 51 | 171 | 121 | 645 | 517 | 325 | 247 |
| November | 1,406 | 953 | S | 444 | 114 | 52 | 213 | 134 | 744 | 526 | 335 | 241 |
| December | 1,326 | 1,014 | S | 306 | 120 | 66 | 171 | 105 | 747 | 600 | 288 | 243 |
| 2022 | | | | | | | | | | | | |
| January | 1,247 | 929 | S | 305 | 84 | 51 | 139 | 125 | 670 | 517 | 354 | 236 |
| February | 1,380 | 1,076 | S | 296 | 133 | 85 | 196 | 142 | 759 | 626 | 292 | 223 |
| March | 1,366 | 1,052 | S | 303 | 108 | 61 | 192 | 143 | 793 | 624 | 273 | 224 |
| April | 1,339 | 1,013 | S | 311 | 99 | 59 | 170 | 118 | 734 | 567 | 336 | 269 |
| May | 1,440 | 1,043 | S | 392 | 104 | 67 | 174 | 145 | 789 | 586 | 373 | 245 |
| June | 1,391 | 1,006 | S | 379 | 101 | 61 | 195 | 133 | 773 | 586 | 322 | 226 |
| July (r) | 1,411 | 1,007 | S | 399 | 94 | 62 | 285 | 152 | 719 | 557 | 313 | 236 |
| August (r) | 1,345 | 1,016 | S | 322 | 126 | 63 | 201 | 128 | 669 | 566 | 349 | 259 |
| September (p) | 1,427 | 1,049 | S | 376 | 128 | 41 | 207 | 146 | 780 | 646 | 312 | 216 |
| Average RSE (%) ¹ | 6 | 5 | X | 16 | 20 | 16 | 14 | 10 | 7 | 7 | 13 | 12 |
| Percent Change ² | | | | | | | | | | | | |
| Sep. 2022 from Aug. 2022 | 6.1% | 3.2% | S | 16.8% | 1.6% | -34.9% | 3.0% | 14.1% | 16.6% | 14.1% | -10.6% | -16.6% |
| 90 percent confidence interval ³ | ± 11.0 | ± 8.8 | X | ± 33.9 | ± 42.5 | ± 12.9 | ± 33.5 | ± 19.7 | ± 14.9 | ± 14.3 | ± 16.4 | ± 15.2 |
| Sep. 2022 from Sep. 2021 | 15.7% | 11.1% | S | 33.3% | 29.3% | -24.1% | 5.6% | 15.9% | 14.5% | 17.2% | 21.4% | 1.4% |
| 90 percent confidence interval ³ | ± 13.1 | ± 16.5 | X | ± 42.4 | ± 71.9 | ± 30.1 | ± 32.1 | ± 23.3 | ± 17.7 | ± 26.9 | ± 22.0 | ± 19.7 |

Table 5b - Not seasonally adjusted

| Period | United States | | | | Northeast | | Midwest | | South | | West | |
|--|---------------|-------------|--------------|-----------------|--------------|--------------|-------------|-------------|-------------|-------------|-------------|-------------|
| | Total | 1 unit | 2 to 4 units | 5 units or more | Total | 1 unit | Total | 1 unit | Total | 1 unit | Total | 1 unit |
| 2020 Annual | 1,286.9 | 911.7 | 10.5 | 364.7 | 95.2 | 56.7 | 182.5 | 125.6 | 678.4 | 506.1 | 330.9 | 223.4 |
| 2021 Annual | 1,341.0 | 969.7 | 7.7 | 363.7 | 110.9 | 60.5 | 184.2 | 125.3 | 727.0 | 546.6 | 318.9 | 237.2 |
| RSE (%) | 2 | 1 | 22 | 6 | 8 | 8 | 3 | 3 | 3 | 2 | 4 | 3 |
| 2021 Year to date | 991.1 | 709.3 | 5.2 | 276.6 | 79.9 | 44.4 | 134.5 | 91.8 | 541.8 | 401.8 | 235.0 | 171.2 |
| 2022 Year to date | 1,013.4 | 747.9 | 5.9 | 259.7 | 79.3 | 43.6 | 145.4 | 99.2 | 550.0 | 432.4 | 238.6 | 172.7 |
| RSE (%) | 2 | 2 | 26 | 7 | 7 | 7 | 5 | 4 | 2 | 3 | 4 | 3 |
| Year to date percent change² | 2.2% | 5.4% | 12.4% | -6.1% | -0.6% | -1.8% | 8.1% | 8.0% | 1.5% | 7.6% | 1.5% | 0.9% |
| 90 percent confidence interval ³ | ± 4.1 | ± 4.3 | ± 59.5 | ± 8.2 | ± 19.6 | ± 8.2 | ± 10.3 | ± 9.7 | ± 5.9 | ± 7.0 | ± 7.4 | ± 7.0 |
| 2021 | | | | | | | | | | | | |
| September | 103.0 | 79.0 | 0.6 | 23.4 | 8.6 | 4.8 | 17.1 | 11.3 | 55.1 | 44.3 | 22.2 | 18.6 |
| October | 110.8 | 83.0 | 1.2 | 26.6 | 10.3 | 4.8 | 16.1 | 11.7 | 54.6 | 43.5 | 29.8 | 23.0 |
| November | 111.7 | 78.2 | 0.7 | 32.8 | 9.2 | 4.6 | 17.8 | 11.9 | 58.4 | 42.2 | 26.4 | 19.4 |
| December | 127.3 | 99.2 | 0.5 | 27.6 | 11.5 | 6.7 | 15.8 | 9.9 | 72.3 | 59.1 | 27.6 | 23.6 |
| 2022 | | | | | | | | | | | | |
| January | 87.1 | 65.6 | 0.9 | 20.6 | 5.8 | 3.6 | 9.4 | 8.5 | 48.1 | 37.7 | 23.8 | 15.9 |
| February | 98.6 | 78.6 | 0.5 | 19.5 | 8.6 | 5.5 | 13.4 | 9.8 | 56.1 | 47.3 | 20.5 | 16.0 |
| March | 112.7 | 87.9 | 0.9 | 23.9 | 7.9 | 4.2 | 14.9 | 11.0 | 68.7 | 55.3 | 21.3 | 17.4 |
| April | 107.4 | 81.2 | 1.2 | 25.0 | 7.5 | 4.3 | 13.5 | 9.4 | 60.0 | 46.6 | 26.4 | 21.0 |
| May | 120.9 | 87.1 | 0.5 | 33.3 | 8.3 | 5.1 | 14.3 | 11.8 | 66.8 | 49.6 | 31.5 | 20.6 |
| June | 122.4 | 87.5 | 0.6 | 34.3 | 9.5 | 5.8 | 17.2 | 11.6 | 66.2 | 49.2 | 29.5 | 20.9 |
| July (r) | 123.5 | 82.9 | 0.5 | 40.2 | 8.8 | 5.6 | 25.9 | 12.5 | 61.9 | 45.6 | 26.9 | 19.1 |
| August (r) | 121.1 | 88.8 | 0.7 | 31.6 | 12.2 | 6.0 | 18.4 | 11.2 | 58.3 | 48.2 | 32.3 | 23.5 |
| September (p) | 119.7 | 88.2 | 0.2 | 31.3 | 10.7 | 3.5 | 18.5 | 13.4 | 63.9 | 52.8 | 26.5 | 18.5 |
| Average RSE (%) ¹ | 6 | 5 | 59 | 16 | 20 | 16 | 14 | 10 | 7 | 7 | 13 | 12 |

p Preliminary

r Revised

S Does not meet publication standards because tests for identifiable and stable seasonality do not meet reliability standards

X Not applicable

¹ Average relative standard error for the latest 6-month period

² Computed using unrounded data

³ See the Explanatory Notes in the accompanying text for an explanation of 90 percent confidence intervals

Source: U.S. Census Bureau and U.S. Department of Housing and Urban Development, New Residential Construction, October 19, 2022. Additional information on the survey methodology may be found at www.census.gov/construction/nrc/how_the_data_are_collected/.