

FOR RELEASE AT 8:30 AM EST, THURSDAY, FEBRUARY 17, 2022

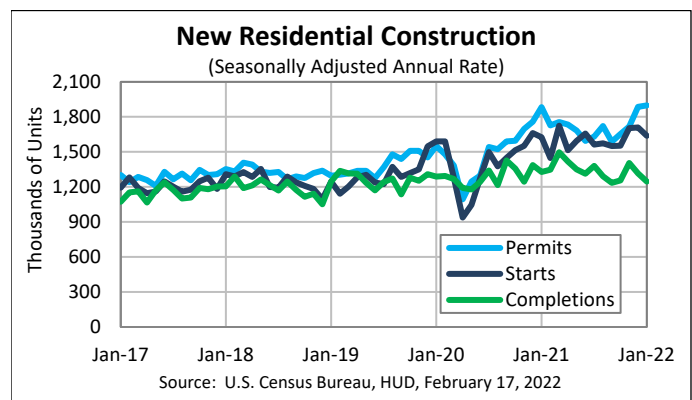
MONTHLY NEW RESIDENTIAL CONSTRUCTION, JANUARY 2022

Release Number: CB22-25

Special Notice: With the January 2022 data month, the monthly Building Permits Survey design has changed from a representative sample to a cut-off sample. This change allows complete local and county data on new housing units authorized by permits to be published monthly going forward. Initial summary level estimates for January 2022 are included in this release. Complete local, county and state estimates will be released at www.census.gov/construction/bps/ on February 24, 2022. For additional details on this change and the impact on New Residential Construction, see our updated [Methodology Change FAQs](#).

February 17, 2022 - The U.S. Census Bureau and the U.S. Department of Housing and Urban Development jointly announced the following new residential construction statistics for January 2022:

NEW RESIDENTIAL CONSTRUCTION JANUARY 2022	
Building Permits:	1,899,000
Housing Starts:	1,638,000
Housing Completions:	1,246,000
Next Release:	March 17, 2022
Seasonally Adjusted Annual Rate (SAAR) Source: U.S. Census Bureau, HUD, February 17, 2022	



Building Permits

Privately-owned housing units authorized by building permits in January were at a seasonally adjusted annual rate of 1,899,000. This is 0.7 percent above the revised December rate of 1,885,000 and is 0.8 percent above the January 2021 rate of 1,883,000. Single-family authorizations in January were at a rate of 1,205,000; this is 6.8 percent above the revised December figure of 1,128,000. Authorizations of units in buildings with five units or more were at a rate of 629,000 in January.

Housing Starts

Privately-owned housing starts in January were at a seasonally adjusted annual rate of 1,638,000. This is 4.1 percent (± 13.7 percent)* below the revised December estimate of 1,708,000, but is 0.8 percent (± 12.5 percent)* above the January 2021 rate of 1,625,000. Single-family housing starts in January were at a rate of 1,116,000; this is 5.6 percent (± 12.0 percent)* below the revised December figure of 1,182,000. The January rate for units in buildings with five units or more was 510,000.

Data Inquiries

Economic Indicators Division, Residential Construction Branch
301-763-5160
eid.rcb.customer.service@census.gov

Media Inquiries

Public Information Office
301-763-3030
pio@census.gov



U.S. Department of Commerce
U.S. CENSUS BUREAU
census.gov



Housing Completions

Privately-owned housing completions in January were at a seasonally adjusted annual rate of 1,246,000. This is 5.2 percent (± 8.0 percent)* below the revised December estimate of 1,315,000 and is 6.2 percent (± 10.0 percent)* below the January 2021 rate of 1,328,000. Single-family housing completions in January were at a rate of 927,000; this is 7.3 percent (± 6.8 percent) below the revised December rate of 1,000,000. The January rate for units in buildings with five units or more was 309,000.

The February report is scheduled for release on March 17, 2022. View the full schedule in the Economic Briefing Room: <www.census.gov/economic-indicators/>. The full text and tables for this release can be found at <www.census.gov/construction/nrc/>.

EXPLANATORY NOTES

In interpreting changes in the statistics in this release, note that month-to-month changes in seasonally adjusted statistics often show movements which may be irregular. It may take three months to establish an underlying trend for building permit authorizations, six months for total starts, and six months for total completions. The statistics in Table 1 in this release are based on a non-probability sample and not subject to sampling error. They are, however, still subject to nonsampling error. On average the total quantity response rate for these estimates is 76.1%. The statistics in Tables 2-5 in this release are estimated from sample surveys and are subject to sampling variability as well as nonsampling error including bias and variance from response, nonreporting, and undercoverage. Estimated relative standard errors of the most recent data are shown in the tables. Whenever a statement such as “2.5 percent (± 3.2 percent) above” appears in the text, this indicates the range (-0.7 to +5.7 percent) in which the actual percentage change is likely to have occurred. All ranges given for percentage changes are 90 percent confidence intervals and account only for sampling variability. If a range does not contain zero, the change is statistically significant. If it does contain zero, the change is not statistically significant; that is, it is uncertain whether there was an increase or decrease. The same policies apply to the confidence intervals for percentage changes shown in the tables. On average, the preliminary seasonally adjusted estimates of total building permits, housing starts and housing completions are revised 2.1 percent or less. Explanations of confidence intervals and sampling variability can be found on our website.

<www.census.gov/construction/nrc/how_the_data_are_collected/>

API

The Census Bureau’s application programming interface lets developers create custom apps to reach new users and makes key demographic, socio-economic and housing statistics more accessible than ever before.

<www.census.gov/developers/>

FRED Mobile App



Receive the latest updates on the nation’s key economic indicators by downloading the FRED App <<https://fred.stlouisfed.org/fred-mobile/>> for both Apple and Android devices. FRED, the signature database of the Federal Reserve Bank of St. Louis, now incorporates the Census Bureau’s 13 economic indicators.

###

* The 90 percent confidence interval includes zero. In such cases, there is insufficient statistical evidence to conclude that the actual change is different from zero.

Data Inquiries

Economic Indicators Division, Residential Construction Branch
301-763-5160
eid.rcb.customer.service@census.gov

Media Inquiries

Public Information Office
301-763-3030
pio@census.gov



U.S. Department of Commerce
U.S. CENSUS BUREAU
census.gov



New Privately-Owned Housing Units Authorized in Permit-Issuing Places

(Thousands of Units. Detail may not add to total because of rounding.)

Table 1a - Seasonally adjusted annual rate

Period	United States				Northeast		Midwest		South		West	
	Total	1 unit	2 to 4 units	5 units or more	Total	1 unit	Total	1 unit	Total	1 unit	Total	1 unit
2021												
January	1,883	1,268	55	560	195	79	245	175	956	711	487	303
February	1,726	1,145	48	533	170	78	250	172	863	609	443	286
March	1,755	1,194	58	503	155	78	253	174	908	661	439	281
April	1,733	1,148	50	535	168	76	228	159	918	649	419	264
May	1,683	1,134	58	491	156	71	223	138	898	678	406	247
June	1,594	1,066	49	479	135	64	205	129	878	641	376	232
July	1,630	1,048	54	528	130	58	213	126	857	629	430	235
August	1,721	1,050	41	630	155	67	217	126	907	608	442	249
September	1,586	1,041	49	496	124	55	216	126	849	619	397	241
October	1,653	1,074	51	528	129	63	234	133	859	639	431	239
November	1,717	1,106	48	563	143	62	219	141	906	647	449	256
December (r)	1,885	1,128	67	690	300	83	267	155	901	650	417	240
2022												
January (p)	1,899	1,205	65	629	155	71	265	161	1,004	677	475	296
Percent Change ¹												
Jan. 2022 from Dec. 2021	0.7%	6.8%	-3.0%	-8.8%	-48.3%	-14.5%	-0.7%	3.9%	11.4%	4.2%	13.9%	23.3%
Jan. 2022 from Jan. 2021	0.8%	-5.0%	18.2%	12.3%	-20.5%	-10.1%	8.2%	-8.0%	5.0%	-4.8%	-2.5%	-2.3%

Table 1b - Not seasonally adjusted

Period	United States				Northeast		Midwest		South		West	
	Total	1 unit	2 to 4 units	5 units or more	Total	1 unit	Total	1 unit	Total	1 unit	Total	1 unit
2020 Annual	1,471.1	979.4	47.2	444.5	134.8	56.3	202.1	128.0	776.3	568.5	358.0	226.7
2021 Annual (r)	1,729.9	1,111.4	52.0	566.5	167.9	67.2	232.0	144.3	903.5	645.8	426.5	254.1
RSE (%)	2	2	2	1	2	4	3	4	1	2	2	2
2021												
January	128.8	83.9	3.6	41.3	13.4	5.0	12.6	8.3	70.4	51.3	32.4	19.3
February	120.1	81.1	3.4	35.6	10.8	4.8	13.4	9.1	64.9	46.9	31.0	20.3
March	157.6	110.8	5.2	41.5	13.0	6.5	21.0	15.0	84.8	63.3	38.8	26.0
April	157.9	107.8	4.4	45.7	13.6	6.8	22.4	15.9	83.0	60.1	38.8	25.1
May	142.3	99.1	4.6	38.5	13.1	6.1	20.4	13.1	74.9	58.0	33.8	21.9
June	154.5	105.1	4.7	44.7	13.5	6.4	20.4	13.6	83.3	61.2	37.3	23.9
July	139.2	91.9	4.6	42.7	11.4	5.2	18.7	11.7	72.7	53.9	36.3	21.1
August	154.6	93.5	3.9	57.2	13.3	6.1	21.2	12.0	82.0	53.3	38.1	22.2
September	134.6	87.4	4.2	43.0	10.4	5.1	20.8	12.1	70.9	50.3	32.5	19.9
October	136.4	85.7	4.6	46.1	10.5	5.5	22.6	11.9	68.5	49.7	34.8	18.5
November	131.8	80.4	3.9	47.5	12.5	5.0	17.4	10.6	67.3	46.6	34.6	18.2
December (r)	153.2	81.3	5.2	66.6	25.4	5.9	18.2	9.6	71.7	47.7	37.8	18.1
2022												
January (p)	132.5	82.7	4.3	45.5	11.5	4.6	13.8	8.0	74.9	51.1	32.2	19.1

p Preliminary

r Revised

S Does not meet publication standards because tests for identifiable and stable seasonality do not meet reliability standards

X Not applicable

¹ Computed using unrounded data

Note: Year-to-date permits estimates reflect revisions not distributed to months.

Source: U.S. Census Bureau and U.S. Department of Housing and Urban Development, New Residential Construction, February 17, 2022. Additional information on the survey methodology may be found at <www.census.gov/construction/nrc/how_the_data_are_collected/>.

New Privately-Owned Housing Units Authorized, but Not Started, at End of Period

(Thousands of Units. Detail may not add to total because of rounding.)

Table 2a - Seasonally adjusted

Period	United States				Northeast		Midwest		South		West	
	Total	1 unit	2 to 4 units	5 units or more	Total	1 unit	Total	1 unit	Total	1 unit	Total	1 unit
2021												
January	204	114	S	87	23	12	13	9	111	66	57	27
February	217	122	S	92	25	12	16	12	118	71	58	27
March	229	130	S	97	24	12	18	13	126	76	61	29
April	242	139	S	101	24	12	22	14	135	82	61	31
May	246	146	S	97	23	12	21	12	140	90	62	32
June	245	148	S	94	22	11	21	13	141	93	61	31
July	247	145	S	99	23	11	22	12	140	92	62	30
August	261	149	S	109	23	12	27	13	144	90	67	34
September	257	146	S	108	23	11	28	13	143	90	63	32
October	269	154	S	112	25	12	29	14	150	95	65	33
November (r)	267	150	S	114	26	13	26	15	151	90	64	32
December (r)	267	143	S	121	36	14	25	12	143	86	63	31
2022												
January (p)	280	151	S	125	35	14	27	13	153	92	65	32
Average RSE (%) ¹	5	5	X	9	18	23	14	13	8	8	8	9
Percent Change ²												
Jan. 2022 from Dec. 2021	4.9%	5.6%	S	3.3%	-2.8%	0.0%	8.0%	8.3%	7.0%	7.0%	3.2%	3.2%
90 percent confidence interval ³	± 3.8	± 4.2	X	± 6.0	± 5.2	± 6.1	± 9.9	± 15.3	± 5.2	± 5.1	± 7.5	± 8.1
Jan. 2022 from Jan. 2021	37.3%	32.5%	S	43.7%	52.2%	16.7%	107.7%	44.4%	37.8%	39.4%	14.0%	18.5%
90 percent confidence interval ³	± 11.9	± 9.0	X	± 21.8	± 24.2	± 34.2	± 52.4	± 34.7	± 13.6	± 13.4	± 19.0	± 21.5

Table 2b - Not seasonally adjusted

Period	United States				Northeast		Midwest		South		West	
	Total	1 unit	2 to 4 units	5 units or more	Total	1 unit	Total	1 unit	Total	1 unit	Total	1 unit
2021												
January	201.9	109.7	3.0	89.3	22.8	11.0	12.3	7.7	109.1	64.2	57.7	26.8
February	215.7	119.1	3.1	93.6	25.8	12.4	16.2	11.1	116.4	68.6	57.3	27.0
March	236.3	135.9	2.3	98.2	24.7	12.3	21.5	14.3	127.7	78.7	62.5	30.7
April	253.0	148.5	2.5	102.0	23.8	12.6	26.5	17.4	138.1	85.1	64.5	33.4
May	250.5	149.7	2.6	98.1	24.2	12.5	21.3	13.9	141.4	91.3	63.5	32.0
June	254.4	155.5	2.7	96.2	24.0	11.4	22.7	14.8	145.4	96.3	62.3	33.0
July	247.2	148.5	2.6	96.0	24.3	11.8	21.5	12.1	139.9	94.1	61.4	30.6
August	258.1	149.0	2.7	106.3	23.4	11.6	26.7	12.6	142.6	91.2	65.3	33.6
September	254.0	145.2	2.6	106.3	21.9	10.6	27.2	12.3	144.4	90.5	60.6	31.8
October	259.4	147.4	2.6	109.4	22.0	11.4	29.0	12.9	146.8	92.0	61.6	31.1
November (r)	249.9	138.7	2.6	108.6	23.2	11.8	25.5	13.0	141.7	84.9	59.5	28.9
December (r)	271.6	140.4	3.4	127.8	36.7	13.2	24.1	10.9	145.0	84.7	65.9	31.6
2022												
January (p)	278.1	145.0	3.8	129.4	36.3	13.6	23.5	11.7	152.2	88.9	66.1	30.8
Average RSE (%) ¹	5	5	21	9	18	23	14	13	8	8	8	9

p Preliminary

r Revised

S Does not meet publication standards because tests for identifiable and stable seasonality do not meet reliability standards

X Not applicable

¹ Average relative standard error for the latest 6-month period

² Computed using unrounded data

³ See the Explanatory Notes in the accompanying text for an explanation of 90 percent confidence intervals

Note: These data represent the number of housing units authorized in all months up to and including the last day of the reporting period and not started as of that date without regard to the months of original permit issuance. Cancelled, abandoned, expired, and revoked permits are excluded.

Source: U.S. Census Bureau and U.S. Department of Housing and Urban Development, New Residential Construction, February 17, 2022. Additional information on the survey methodology may be found at www.census.gov/construction/nrc/how_the_data_are_collected/.

New Privately-Owned Housing Units Started

(Thousands of Units. Detail may not add to total because of rounding.)

Table 3a - Seasonally adjusted annual rate

Period	United States				Northeast		Midwest		South		West	
	Total	1 unit	2 to 4 units	5 units or more	Total	1 unit	Total	1 unit	Total	1 unit	Total	1 unit
2021												
January	1,625	1,143	S	469	204	79	209	163	811	642	401	259
February	1,447	1,069	S	365	109	69	136	108	771	581	431	311
March	1,725	1,255	S	448	165	95	288	217	891	676	381	267
April	1,514	1,061	S	439	158	74	180	144	782	582	394	261
May	1,594	1,098	S	486	139	63	263	164	810	596	382	275
June	1,657	1,161	S	485	147	79	198	131	871	667	441	284
July	1,562	1,112	S	439	69	42	183	145	900	668	410	257
August	1,573	1,088	S	478	166	67	196	129	884	674	327	218
September	1,550	1,089	S	452	127	69	203	132	804	624	416	264
October	1,552	1,074	S	468	114	54	213	130	814	623	411	267
November	1,703	1,222	S	464	113	63	216	138	945	727	429	294
December (r)	1,708	1,182	S	521	117	66	321	202	898	659	372	255
2022												
January (p)	1,638	1,116	S	510	120	49	200	144	880	628	438	295
Average RSE (%) ¹	6	6	X	14	16	18	13	9	8	8	12	12
Percent Change ²												
Jan. 2022 from Dec. 2021	-4.1%	-5.6%	S	-2.1%	2.6%	-25.8%	-37.7%	-28.7%	-2.0%	-4.7%	17.7%	15.7%
90 percent confidence interval ³	± 13.7	± 12.0	X	± 29.6	± 31.3	± 19.8	± 25.2	± 20.9	± 18.6	± 14.8	± 22.1	± 33.9
Jan. 2022 from Jan. 2021	0.8%	-2.4%	S	8.7%	-41.2%	-38.0%	-4.3%	-11.7%	8.5%	-2.2%	9.2%	13.9%
90 percent confidence interval ³	± 12.5	± 9.8	X	± 31.4	± 25.0	± 19.0	± 35.2	± 35.4	± 16.6	± 12.0	± 25.6	± 21.7

Table 3b - Not seasonally adjusted

Period	United States				Northeast		Midwest		South		West	
	Total	1 unit	2 to 4 units	5 units or more	Total	1 unit	Total	1 unit	Total	1 unit	Total	1 unit
2020 Annual	1,379.6	990.5	12.3	376.8	111.5	60.2	191.6	135.6	735.5	553.1	341.0	241.5
2021 Annual (r)	1,597.2	1,125.5	11.9	459.8	134.7	67.4	215.2	148.2	847.7	642.7	399.5	267.3
RSE (%)	2	2	19	7	7	7	2	2	2	3	4	3
2021												
January	115.2	77.9	1.0	36.2	14.7	5.0	11.3	7.8	60.7	47.6	28.5	17.5
February	102.1	74.6	1.0	26.5	6.3	3.4	7.1	5.1	57.6	43.8	31.1	22.4
March	140.6	102.8	1.7	36.0	12.8	7.2	20.4	14.7	75.3	58.0	32.1	22.9
April	135.5	97.2	1.2	37.0	13.8	6.7	16.1	13.1	70.1	53.2	35.5	24.3
May	145.7	100.5	0.9	44.3	12.5	5.6	26.6	17.6	71.9	52.5	34.6	24.9
June	154.3	111.6	1.0	41.7	14.4	8.5	19.6	13.8	79.5	61.9	40.9	27.4
July	143.9	104.6	1.0	38.3	6.7	4.3	18.5	15.1	81.3	61.0	37.6	24.1
August	140.0	98.0	0.6	41.4	14.6	6.1	18.1	12.3	78.1	59.9	29.2	19.8
September	135.2	93.5	0.9	40.8	11.6	6.4	19.0	12.6	68.3	52.0	36.2	22.6
October	133.6	91.6	0.9	41.1	10.0	4.8	20.2	13.0	67.8	51.1	35.5	22.8
November (r)	130.8	91.2	1.4	38.1	9.1	5.0	17.0	10.6	71.7	53.7	33.0	21.9
December (r)	120.5	81.7	0.3	38.4	8.3	4.6	21.2	12.4	65.6	48.0	25.4	16.8
2022												
January (p)	117.6	76.6	0.9	40.0	8.6	3.1	11.3	6.9	66.0	46.2	31.7	20.4
Average RSE (%) ¹	6	6	44	14	16	18	13	9	8	8	12	12

p Preliminary

r Revised

S Does not meet publication standards because tests for identifiable and stable seasonality do not meet reliability standards

X Not applicable

¹ Average relative standard error for the latest 6-month period

² Computed using unrounded data

³ See the Explanatory Notes in the accompanying text for an explanation of 90 percent confidence intervals

Source: U.S. Census Bureau and U.S. Department of Housing and Urban Development, New Residential Construction, February 17, 2022. Additional information on the survey methodology may be found at www.census.gov/construction/nrc/how_the_data_are_collected/.

New Privately-Owned Housing Units Under Construction at End of Period

(Thousands of Units. Detail may not add to total because of rounding.)

Table 4a - Seasonally adjusted

Period	United States				Northeast		Midwest		South		West	
	Total	1 unit	2 to 4 units	5 units or more	Total	1 unit	Total	1 unit	Total	1 unit	Total	1 unit
2021												
January	1,284	619	S	654	183	58	165	87	581	308	355	166
February	1,289	623	S	655	181	58	163	85	581	309	364	171
March	1,307	637	S	658	186	58	165	91	589	313	367	175
April	1,324	646	S	665	194	60	167	93	593	318	370	175
May	1,339	658	S	668	197	60	172	97	595	322	375	179
June	1,371	678	S	680	201	61	175	96	615	339	380	182
July	1,384	693	S	678	198	60	174	98	629	351	383	184
August	1,408	706	S	689	203	61	174	98	644	364	387	183
September	1,434	719	S	702	203	62	178	100	656	370	397	187
October	1,464	732	S	720	204	62	182	101	669	379	409	190
November (r)	1,490	754	S	723	204	63	185	102	686	396	415	193
December (r)	1,521	770	S	738	201	62	197	108	699	405	424	195
2022												
January (p)	1,543	785	S	745	200	62	204	111	710	414	429	198
Average RSE (%) ¹	3	3	X	6	6	5	3	4	4	5	5	6
Percent Change ²												
Jan. 2022 from Dec. 2021	1.4%	1.9%	S	0.9%	-0.5%	0.0%	3.6%	2.8%	1.6%	2.2%	1.2%	1.5%
90 percent confidence interval ³	± 0.8	± 1.0	X	± 1.2	± 1.8	± 2.4	± 2.2	± 1.9	± 1.1	± 1.4	± 1.5	± 2.1
Jan. 2022 from Jan. 2021	20.2%	26.8%	S	13.9%	9.3%	6.9%	23.6%	27.6%	22.2%	34.4%	20.8%	19.3%
90 percent confidence interval ³	± 2.9	± 4.1	X	± 4.8	± 6.6	± 13.2	± 7.2	± 7.8	± 5.6	± 7.5	± 4.3	± 8.4

Table 4b - Not seasonally adjusted

Period	United States				Northeast		Midwest		South		West	
	Total	1 unit	2 to 4 units	5 units or more	Total	1 unit	Total	1 unit	Total	1 unit	Total	1 unit
2021												
January	1,263.8	597.3	10.7	655.8	181.9	56.6	161.3	83.5	570.4	296.6	350.1	160.6
February	1,270.3	600.4	10.9	658.9	178.9	55.4	157.0	78.6	574.7	300.8	359.7	165.6
March	1,289.9	619.0	12.0	658.9	184.3	56.1	158.1	84.1	584.7	307.9	362.9	170.9
April	1,315.5	636.9	13.1	665.5	192.5	58.8	161.5	87.4	591.7	316.2	369.8	174.5
May	1,343.1	657.9	13.1	672.1	197.9	59.8	170.6	95.1	597.4	322.7	377.3	180.4
June	1,382.3	687.6	13.5	681.2	202.2	61.9	176.2	96.8	620.4	343.9	383.4	185.1
July	1,405.1	714.2	13.2	677.6	199.7	61.2	177.5	101.9	639.2	361.6	388.6	189.5
August	1,427.7	729.3	12.7	685.7	203.6	62.7	180.2	104.2	653.6	374.7	390.3	187.7
September	1,457.2	741.9	12.8	702.4	205.2	63.8	183.7	105.8	666.3	380.7	402.1	191.6
October	1,478.6	750.0	12.3	716.3	204.7	63.5	187.8	106.8	675.9	387.3	410.2	192.4
November (r)	1,502.2	764.1	12.9	725.1	205.3	64.2	189.0	105.7	689.7	398.9	418.2	195.3
December (r)	1,494.7	749.5	12.6	732.6	199.7	61.7	196.4	107.9	683.5	391.5	415.2	188.3
2022												
January (p)	1,519.5	759.6	12.5	747.4	198.9	60.6	199.4	106.5	697.7	400.8	423.6	191.7
Average RSE (%) ¹	3	3	20	6	6	5	3	4	4	5	5	6

p Preliminary

r Revised

S Does not meet publication standards because tests for identifiable and stable seasonality do not meet reliability standards

X Not applicable

¹ Average relative standard error for the latest 6-month period

² Computed using unrounded data

³ See the Explanatory Notes in the accompanying text for an explanation of 90 percent confidence intervals

Source: U.S. Census Bureau and U.S. Department of Housing and Urban Development, New Residential Construction, February 17, 2022.

Additional information on the survey methodology may be found at <www.census.gov/construction/nrc/how_the_data_are_collected/>.

New Privately-Owned Housing Units Completed

(Thousands of Units. Detail may not add to total because of rounding.)

Table 5a - Seasonally adjusted annual rate

Period	United States				Northeast		Midwest		South		West	
	Total	1 unit	2 to 4 units	5 units or more	Total	1 unit	Total	1 unit	Total	1 unit	Total	1 unit
2021												
January	1,328	1,012	S	311	108	71	175	146	740	568	305	227
February	1,347	1,017	S	320	121	63	188	152	723	563	315	239
March	1,497	1,034	S	457	134	85	214	125	814	596	335	228
April	1,417	994	S	421	99	49	176	119	791	565	351	261
May	1,350	966	S	379	72	52	191	121	780	565	307	228
June	1,312	922	S	382	109	68	171	133	700	487	332	234
July	1,380	945	S	422	107	56	189	122	711	513	373	254
August	1,291	945	S	340	132	61	165	113	688	536	306	235
September	1,235	944	S	284	100	55	198	128	681	549	256	212
October	1,255	933	S	308	115	51	172	121	643	514	325	247
November (r)	1,404	946	S	448	113	51	215	135	739	518	337	242
December (r)	1,315	1,000	S	309	121	67	170	106	729	580	295	247
2022												
January (p)	1,246	927	S	309	86	54	134	120	677	510	349	243
Average RSE (%) ¹	6	5	X	16	23	19	13	13	8	8	9	9
Percent Change ²												
Jan. 2022 from Dec. 2021	-5.2%	-7.3%	S	0.0%	-28.9%	-19.4%	-21.2%	13.2%	-7.1%	-12.1%	18.3%	-1.6%
90 percent confidence interval ³	± 8.0	± 6.8	X	± 25.6	± 26.7	± 19.8	± 15.2	± 21.9	± 9.7	± 9.1	± 19.4	± 15.1
Jan. 2022 from Jan. 2021	-6.2%	-8.4%	S	-0.6%	-20.4%	-23.9%	-23.4%	-17.8%	-8.5%	-10.2%	14.4%	7.0%
90 percent confidence interval ³	± 10.0	± 11.8	X	± 24.1	± 35.4	± 36.1	± 18.9	± 22.5	± 14.3	± 17.2	± 19.3	± 20.7

Table 5b - Not seasonally adjusted

Period	United States				Northeast		Midwest		South		West	
	Total	1 unit	2 to 4 units	5 units or more	Total	1 unit	Total	1 unit	Total	1 unit	Total	1 unit
2020 Annual	1,286.9	911.7	10.5	364.7	95.2	56.7	182.5	125.6	678.4	506.1	330.9	223.4
2021 Annual (r)	1,338.9	967.5	7.7	363.7	110.7	60.4	183.8	125.1	724.9	544.3	319.6	237.7
RSE (%)	2	1	22	6	8	8	3	3	3	2	4	3
2021												
January	93.7	72.2	0.3	21.1	7.9	5.4	11.9	10.0	53.4	41.8	20.5	15.1
February	94.6	72.5	0.6	21.5	8.0	4.1	12.6	10.2	51.7	41.0	22.4	17.3
March	120.5	83.9	0.5	36.1	9.9	6.1	16.4	9.4	67.7	50.4	26.4	17.9
April	112.4	78.9	0.2	33.3	7.4	3.4	14.1	9.6	63.8	45.9	27.1	20.0
May	112.0	80.3	0.4	31.4	5.7	4.0	15.4	9.7	65.3	47.5	25.6	19.1
June	115.9	80.9	0.7	34.4	10.3	6.5	15.2	11.8	59.9	40.8	30.6	21.8
July	121.4	78.5	1.3	41.5	9.9	4.9	16.4	9.8	62.7	43.2	32.3	20.6
August	117.6	83.0	0.6	34.0	12.2	5.1	15.2	10.0	62.2	47.0	28.0	20.9
September	103.0	79.0	0.6	23.4	8.6	4.8	17.1	11.3	55.1	44.3	22.2	18.6
October	110.8	83.0	1.2	26.6	10.3	4.8	16.1	11.7	54.6	43.5	29.8	23.0
November (r)	111.7	78.2	0.7	32.8	9.2	4.6	17.8	11.9	58.4	42.2	26.4	19.4
December (r)	125.2	97.0	0.5	27.7	11.3	6.5	15.4	9.7	70.1	56.8	28.3	24.0
2022												
January (p)	87.0	65.5	0.7	20.9	6.2	4.0	9.2	8.3	48.0	36.7	23.6	16.5
Average RSE (%) ¹	6	5	60	16	23	19	13	13	8	8	9	9

p Preliminary

r Revised

S Does not meet publication standards because tests for identifiable and stable seasonality do not meet reliability standards

X Not applicable

¹ Average relative standard error for the latest 6-month period

² Computed using unrounded data

³ See the Explanatory Notes in the accompanying text for an explanation of 90 percent confidence intervals

Source: U.S. Census Bureau and U.S. Department of Housing and Urban Development, New Residential Construction, February 17, 2022. Additional information on the survey methodology may be found at www.census.gov/construction/nrc/how_the_data_are_collected/.