



**Transmission of material in this release is embargoed until
 8:30 a.m. (EST) Friday, February 16, 2018**

USDL-18-0241

Technical information: (202) 691-7101 • MXPinfo@bls.gov • www.bls.gov/mxp
 Media contact: (202) 691-5902 • PressOffice@bls.gov

U.S. IMPORT AND EXPORT PRICE INDEXES – JANUARY 2018

U.S. import prices increased 1.0 percent in January, the U.S. Bureau of Labor Statistics reported today, after rising 0.2 percent in December. Higher prices for both nonfuel imports and fuel imports contributed to the January advance. Prices for U.S. exports rose 0.8 percent in January following a 0.1-percent increase the previous month.

Chart 1. One-month percent change in the Import Price Index: January 2017 – January 2018

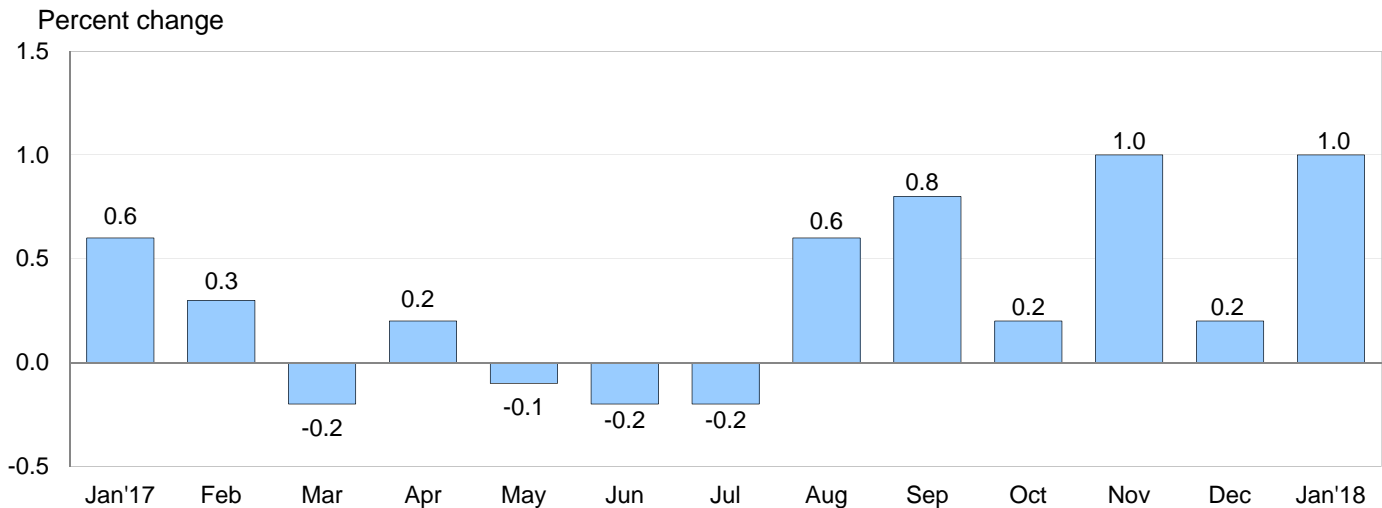
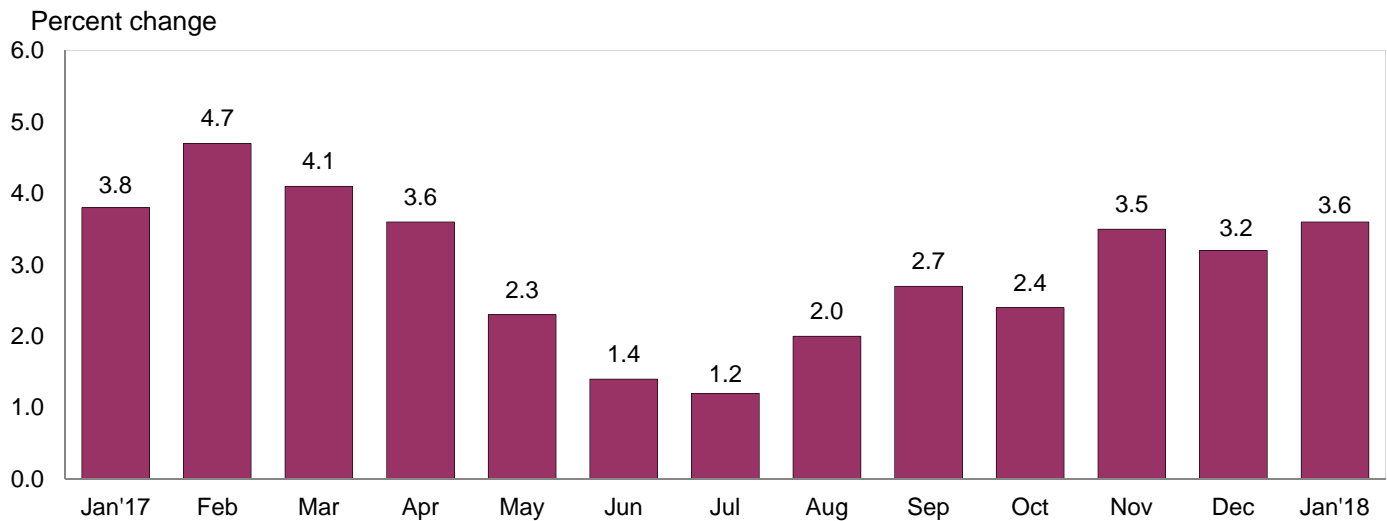


Chart 2. 12-month percent change in the Import Price Index: January 2017 – January 2018



All Imports: The price index for U.S. imports rose 1.0 percent in January, after increases of 0.2 percent in December and 1.0 percent in November. The 1.0-percent advances were the largest 1-month rises since the index increased 1.2 percent in May 2016. Import prices advanced 3.6 percent between January 2017 and January 2018.

Fuel Imports: Fuel prices increased 4.7 percent in January following a 2.9-percent advance in December and a 9.8-percent rise in November. Higher prices for petroleum and natural gas contributed to the increases in all 3 months. Prices for petroleum advanced 4.3 percent in January, after rising 2.3 percent the previous month and 9.5 percent in November. The price index for natural gas increased 20.7 percent in January following advances of 20.0 percent in December and 25.7 percent in November. Prices for fuel imports rose 19.7 percent over the past 12 months. Petroleum prices increased 20.9 percent for the year ended in January and prices for natural gas advanced 16.2 percent over the same period.

All Imports Excluding Fuel: Prices for nonfuel imports advanced 0.4 percent in January, after edging down 0.1 percent the previous month. The January increase was the largest monthly advance since the index rose 0.4 percent in March 2012. The last time the index increased more than 0.4 percent was a 0.8-percent rise in April 2011. Prices for nonfuel industrial supplies and materials; automotive vehicles; foods, feeds, and beverages; and capital goods all contributed to the January advance. The price index for nonfuel imports increased 1.9 percent over the past 12 months, the largest over-the-year rise since the index advanced 2.0 percent in March 2012. The January 12-month advance was primarily driven by rising prices for nonfuel industrial supplies and materials.

Table A. Percent change in Import and Export Price Indexes, selected categories

Month	IMPORTS			EXPORTS		
	All imports	Fuel imports	Nonfuel imports	All exports	Agricultural exports	Non-agricultural exports
2017						
January.....	0.6	6.1	-0.1	0.2	0.4	0.2
February.....	0.3	0.3	0.3	0.3	1.4	0.3
March.....	-0.2	-3.0	0.2	0.1	1.1	0.0
April.....	0.2	-0.4	0.3	0.2	0.1	0.3
May.....	-0.1	-0.9	0.1	-0.6	-1.6	-0.4
June.....	-0.2	-3.6	0.1	-0.1	-1.4	0.0
July.....	-0.2	-1.0	-0.1	0.5	1.8	0.3
August.....	0.6	4.0	0.3	0.6	0.0	0.7
September.....	0.8	5.7	0.3	0.8	-0.7	0.9
October.....	0.2	0.3	0.1 ^r	0.1	2.0	-0.1
November.....	1.0 ^r	9.8 ^r	0.0 ^r	0.5	-0.7 ^r	0.7 ^r
December.....	0.2 ^r	2.9 ^r	-0.1	0.1 ^r	-0.3 ^r	0.1 ^r
2018						
January.....	1.0	4.7	0.4	0.8	-0.1	0.9
Jan. 2016 to 2017.....	3.8	56.9	0.2	2.4	1.3	2.4
Jan. 2017 to 2018.....	3.6	19.7	1.9	3.4	1.4	3.7

r Revised

Chart 3. One-month percent change in the Export Price Index: January 2017 – January 2018

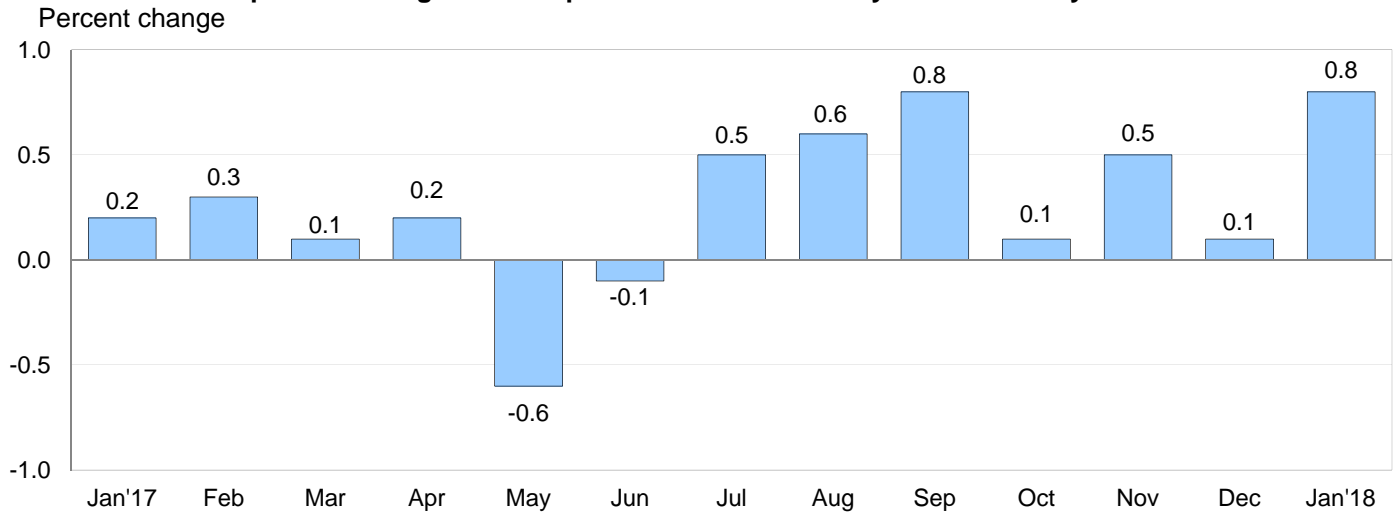
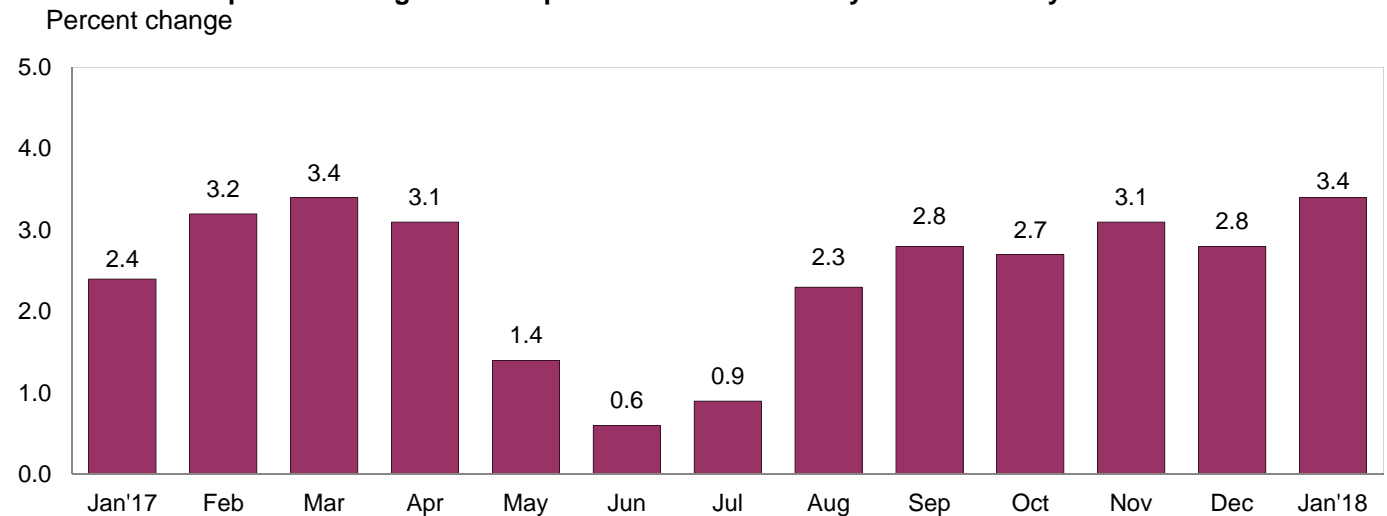


Chart 4. 12-month percent change in the Export Price Index: January 2017 – January 2018



All Exports: U.S. export prices increased 0.8 percent in January. The index has not risen by more than 0.8 percent since the index advanced 1.1 percent in May 2016. In January, the increase in nonagricultural prices more than offset a decline in agricultural prices. The price index for exports increased 3.4 percent over the past 12 months.

Agricultural Exports: Prices for agricultural exports edged down 0.1 percent in January, after falling 0.3 percent the previous month. The January drop was driven by a 5.8-percent decline in soybean and other oilseeds prices. Despite the recent decreases, prices for agricultural exports rose 1.4 percent over the past year. Rising meat prices were the primary contributor to the advance in agricultural prices for the year ended in January.

All Exports Excluding Agriculture: Nonagricultural export prices advanced 0.9 percent in January following a 0.1-percent rise in December. The price indexes for nonagricultural industrial supplies and materials; capital goods; automotive vehicles; and consumer goods all rose in January. Prices for nonagricultural export indexes advanced 3.7 percent from January 2017 to January 2018, the largest 12-month increase since a 4.0-percent rise for the year ended December 2011.

SELECTED JANUARY HIGHLIGHTS

Import Prices

Imports by Locality of Origin: Prices for imports from Japan increased 0.6 percent in January, after recording no change the previous month. The January advance was the first monthly rise since the index ticked up 0.1 percent in September and the largest 1-month advance since a 0.6-percent rise in January 2011. In January, import prices from China recorded no change for the second consecutive month. The price index for imports from China rose 0.2 percent for the year ended in January, the first 12-month advance since the index increased 0.1 percent in October 2014 and the largest since the index advanced 0.3 percent in July 2014. Higher fuel prices led the January increase for import prices from Canada, up 2.5 percent, and Mexico, up 0.7 percent. Prices for imports from the European Union also rose, increasing 0.5 percent.

Nonfuel Industrial Supplies and Materials: The price index for nonfuel industrial supplies and materials increased 1.8 percent in January following a 0.2-percent drop in December. The January rise was driven by higher metals prices and was the largest monthly advance since a 2.0-percent rise in March 2011.

Finished Goods: Finished goods prices were mostly up in January. Prices for automotive vehicles advanced 0.5 percent in January led by rising prices for passenger cars. The price index for capital goods also rose in January, ticking up 0.1 percent. Consumer goods prices recorded no change.

Foods, Feeds, and Beverages: Foods, feeds, and beverages prices rose 0.8 percent in January following a 0.9-percent decline in December. The January increase was driven by higher prices for fruit, bakery products, and vegetables.

Transportation Services: Import air passenger fares fell 3.2 percent in January, after increasing 6.5 percent in December. The January decline was led by an 11.1-percent drop in Asian fares and a 13.0-percent decrease in Latin American/Caribbean fares, which more than offset higher European fares. Despite the January decline, import air passenger fares rose 2.6 percent over the past year. The price index for import air freight prices decreased 3.0 percent in January and increased 8.7 percent over the past 12 months.

Export Prices

Nonagricultural Industrial Supplies and Materials: Nonagricultural industrial supplies and materials prices increased 2.1 percent in January, after edging down 0.1 percent in December. The January advance was driven by a 4.5-percent rise in fuel prices and a 3.0-percent increase in metals prices.

Finished Goods: Prices for each of the major finished goods categories increased in January. Capital goods prices advanced 0.5 percent. Higher prices for nonelectrical machinery, transportation equipment, and electrical machinery all contributed to the January advance. The price indexes for consumer goods and automotive vehicles also rose in January, each increasing 0.3 percent.

Transportation Services: Export air passenger fares advanced 5.6 percent in January following a 3.3-percent rise the previous month. Both increases were driven by higher Asian and Latin American/Caribbean fares which more than offset lower European fares in January and December. Despite the recent increases, export air passenger fares fell 1.0 percent for the year ended in January. Prices for export air freight increased 0.2 percent in January and 7.5 percent over the past year.

Import and Export Price Index data for February are scheduled for release on Thursday, March 15, 2018 at 8:30 a.m. (EDT).

Table 1. U.S. import price indexes and percent changes for selected categories of goods: January 2017 to January 2018

[2000=100, unless otherwise noted]

Description	End Use	Relative importance Dec. 2017 ¹	Index		Percent change				
			Dec. 2017	Jan. 2018	Annual	Monthly			
					Jan. 2017 to Jan. 2018	Sept. 2017 to Oct. 2017	Oct. 2017 to Nov. 2017	Nov. 2017 to Dec. 2017	Dec. 2017 to Jan. 2018
All commodities		100.000	125.5	126.7	3.6	0.2	1.0	0.2	1.0
All imports excluding food and fuels (Dec. 2010=100)		83.142	99.5	100.0	1.8	0.2	0.1	-0.1	0.5
All imports excluding petroleum		90.086	112.7	113.3	1.9	0.0	0.2	0.0	0.5
All imports excluding fuels (Dec. 2001=100)		89.319	116.7	117.2	1.9	0.1	0.0	-0.1	0.4
Foods, feeds, & beverages	0	6.126	181.0	182.5	3.1	-0.4	-1.0	-0.9	0.8
Agricultural foods, feeds & beverages, excluding distilled beverages.....	00	4.825	199.1	200.7	4.2	-0.7	-1.1	-1.2	0.8
Nonagricultural foods (fish, distilled beverages).....	01	1.301	139.9	141.0	-0.8	0.5	-0.7	0.0	0.8
Industrial supplies & materials	1	24.765	185.6	191.3	13.7	0.6	4.5	1.1	3.1
Industrial supplies & materials excluding petroleum.....		14.928	153.9	157.6	9.1	0.7	1.5	0.4	2.4
Industrial supplies & materials excluding fuels (Dec. 2001=100).....		14.074	173.9	177.1	9.3	0.8	0.9	-0.2	1.8
Industrial supplies & materials, durable....		8.894	164.3	168.1	10.8	0.2	0.7	-0.8	2.3
Industrial supplies & materials nondurable excluding petroleum.....		5.957	140.8	144.4	6.8	1.3	2.7	2.2	2.6
Fuels & lubricants.....	10	10.681	205.3	215.0	19.7	0.3	9.8	2.9	4.7
Petroleum & petroleum products.....	100	9.914	222.6	232.1	20.9	0.5	9.5	2.3	4.3
Crude.....	10000	6.998	230.0	243.3	25.4	3.0	9.4	2.6	5.8
Fuels, n.e.s.-coals & gas.....	101	0.585	114.1	130.4	6.2	-2.6	19.4	16.0	14.3
Gas-natural.....	10110	0.435	99.2	119.7	16.2	-2.4	25.7	20.0	20.7
Paper & paper base stocks.....	11	0.542	109.7	111.9	6.3	0.9	0.6	0.5	2.0
Materials associated with nondurable supplies & materials.....	12	4.714	159.8	161.3	6.8	1.7	1.4	0.8	0.9
Selected building materials.....	13	1.631	151.2	150.1	8.1	2.0	0.3	-1.0	-0.7
Unfinished metals related to durable goods.....	14	3.750	223.5	234.4	16.4	-0.8	1.5	-1.8	4.9
Finished metals related to durable goods.....	15	1.788	157.7	160.1	10.6	0.8	0.4	0.4	1.5
Nonmetals related to durable goods.....	16	1.660	110.4	110.6	2.6	0.4	0.0	0.1	0.2
Capital goods	2	26.916	89.3	89.4	0.9	0.1	-0.1	0.0	0.1
Electric generating equipment.....	20	3.250	116.9	116.9	0.8	0.0	0.1	-0.2	0.0
Nonelectrical machinery.....	21	21.403	81.8	81.9	1.1	0.1	-0.1	0.0	0.1
Transportation equipment excluding motor vehicles (Dec. 2001=100).....	22	2.263	135.0	135.7	-0.8	0.2	0.1	0.1	0.5
Automotive vehicles, parts & engines	3	15.948	110.3	110.8	0.6	0.0	0.0	0.0	0.5
Consumer goods, excluding automobiles	4	26.245	106.7	106.7	-0.2	-0.1	0.0	-0.1	0.0
Nondurables, manufactured.....	40	12.830	121.5	121.2	0.1	-0.2	0.1	0.1	-0.2
Durables, manufactured.....	41	12.111	92.8	92.9	-0.4	-0.1	0.0	-0.2	0.1
Nonmanufactured consumer goods.....	42	1.304	114.8	115.6	0.2	0.3	-0.3	0.2	0.7

¹ Relative importance figures are based on 2016 trade values.

NOTES: Data may be revised in each of the 3 months after original publication.

Dash = Not available

Table 2. U.S. export price indexes and percent changes for selected categories of goods: January 2017 to January 2018
 [2000=100, unless otherwise noted]

Description	End Use	Relative importance Dec. 2017 ¹	Index		Percent change				
			Dec. 2017	Jan. 2018	Annual Jan. 2017 to Jan. 2018	Monthly			
						Sept. 2017 to Oct. 2017	Oct. 2017 to Nov. 2017	Nov. 2017 to Dec. 2017	Dec. 2017 to Jan. 2018
All commodities.....		100.000	124.7	125.7	3.4	0.1	0.5	0.1	0.8
Agricultural commodities.....		9.969	178.5	178.3	1.4	2.0	-0.7	-0.3	-0.1
All exports excluding food and fuels (Dec. 2010=100).....		81.226	100.1	100.6	2.5	0.2	0.2	0.1	0.5
Nonagricultural commodities.....		90.031	120.6	121.7	3.7	-0.1	0.7	0.1	0.9
Foods, feeds, & beverages.....	0	9.345	180.5	180.2	1.5	2.2	-1.0	-0.5	-0.2
Agricultural foods, feeds & beverages, excluding distilled beverages.....	00	8.728	179.4	178.8	1.0	2.2	-1.0	-0.5	-0.3
Nonagricultural foods (fish, distilled beverages).....	01	0.617	204.9	208.2	8.6	1.7	-0.7	0.5	1.6
Industrial supplies & materials.....	1	30.990	154.7	157.8	7.6	-1.0	2.0	0.1	2.0
Industrial supplies & materials, durable....		10.347	162.1	164.5	6.1	-0.5	0.2	0.0	1.5
Industrial supplies & materials, nondurable.....		20.643	151.5	155.0	8.5	-1.2	3.1	0.1	2.3
Agricultural industrial supplies & materials.....	10	1.242	178.7	180.7	4.0	0.6	1.0	1.1	1.1
Nonagricultural industrial supplies & materials.....		29.748	153.9	157.1	7.8	-1.0	2.1	-0.1	2.1
Fuels & lubricants.....	11	9.429	184.5	192.8	13.9	-3.0	5.1	-0.5	4.5
Nonagricultural supplies & materials excluding fuels & building materials....	12	19.284	155.4	157.1	5.4	-0.3	0.9	0.2	1.1
Selected building materials.....	13	1.035	123.7	121.2	3.6	1.7	0.2	-0.2	-2.0
Capital goods.....	2	36.814	108.7	109.2	2.0	0.5	0.0	0.2	0.5
Electrical generating equipment.....	20	3.929	116.0	117.3	4.5	1.9	0.2	0.3	1.1
Nonelectrical machinery.....	21	23.791	94.3	94.6	1.2	0.3	-0.1	0.1	0.3
Transportation equipment excluding motor vehicles (Dec. 2001=100).....	22	9.094	172.3	173.2	2.7	0.2	0.1	0.3	0.5
Automotive vehicles, parts & engines.....	3	10.181	113.2	113.5	0.4	0.0	-0.1	-0.1	0.3
Consumer goods, excluding automotives.....	4	12.670	109.4	109.7	1.9	0.0	0.0	0.2	0.3
Nondurables, manufactured.....	40	6.150	105.8	106.6	3.2	0.0	0.1	0.4	0.8
Durables, manufactured.....	41	5.064	107.6	107.3	0.6	-0.1	-0.1	0.0	-0.3

¹ Relative importance figures are based on 2016 trade values.

NOTES: Data may be revised in each of the 3 months after original publication.

Dash = Not available

Table 3. U.S. import price indexes and percent changes for selected industries: January 2017 to January 2018
 [December 2005=100, unless otherwise noted]

Description	NAICS	Relative importance Dec. 2017 ¹	Index		Percent change				
			Dec. 2017	Jan. 2018	Annual Jan. 2017 to Jan. 2018	Monthly			
						Sept. 2017 to Oct. 2017	Oct. 2017 to Nov. 2017	Nov. 2017 to Dec. 2017	Dec. 2017 to Jan. 2018
Nonmanufacturing.....		9.735	110.2	116.4	19.6	1.8	6.7	2.0	5.6
Agriculture, forestry, fishing and hunting.....	11	2.046	184.5	188.7	4.6	-1.5	-2.4	-2.2	2.3
Crop production.....	111	1.662	198.7	202.8	6.1	-1.2	-3.3	-3.0	2.1
Animal production (Dec. 2014=100).....	112	0.191	76.0	78.0	-1.4	-3.0	3.1	0.7	2.6
Mining.....	21	7.689	102.1	108.8	24.1	2.8	9.5	3.1	6.6
Oil and gas extraction.....	211	7.463	102.3	109.2	24.9	3.0	9.9	3.4	6.7
Manufacturing.....		89.986	111.1	111.5	2.0	-0.1	0.5	0.0	0.4
Manufacturing, part 1.....	31	11.410	124.5	124.8	1.1	-0.1	-0.1	0.1	0.2
Food manufacturing.....	311	3.438	156.3	156.9	2.7	-0.1	-0.1	-0.1	0.4
Beverage and tobacco product manufacturing.....	312	1.094	119.4	120.1	1.9	0.2	-0.1	0.0	0.6
Textile mills (Dec. 2011=100).....	313	0.388	100.2	99.9	1.9	0.1	0.1	0.6	-0.3
Textile product mills.....	314	0.930	109.3	109.4	0.9	0.1	-0.2	0.1	0.1
Apparel manufacturing.....	315	3.873	110.9	111.2	0.1	-0.3	-0.1	0.1	0.3
Leather and allied product manufacturing.....	316	1.686	122.9	122.9	-0.1	0.1	0.2	0.0	0.0
Manufacturing, part 2.....	32	18.156	124.3	124.4	4.2	-0.2	1.8	0.4	0.1
Wood product manufacturing.....	321	1.007	133.8	132.1	12.0	3.0	0.5	-1.5	-1.3
Paper manufacturing.....	322	1.009	106.2	106.9	2.5	0.6	0.1	0.2	0.7
Printing and related support activities (Dec. 2016=100).....	323	0.208	98.9	98.9	-1.0	0.1	-0.1	0.0	0.0
Petroleum and coal products manufacturing.....	324	2.628	94.7	94.6	9.4	-6.4	10.7	1.5	-0.1
Chemical manufacturing.....	325	10.112	137.8	138.1	3.5	0.7	0.7	0.4	0.2
Plastics and rubber products manufacturing.....	326	2.201	118.3	118.2	1.3	-0.1	-0.1	0.1	-0.1
Nonmetallic mineral product manufacturing.....	327	0.990	129.1	129.7	0.6	0.3	0.1	0.2	0.5
Manufacturing, part 3.....	33	60.420	104.1	104.7	1.7	0.0	0.1	-0.2	0.6
Primary metal manufacturing.....	331	4.282	148.4	154.3	15.4	-0.2	1.3	-1.6	4.0
Fabricated metal product manufacturing.....	332	3.104	126.2	126.6	4.5	0.7	0.2	0.1	0.3
Machinery manufacturing.....	333	6.806	117.8	117.9	1.7	0.0	-0.1	0.1	0.1
Computer and electronic product manufacturing.....	334	17.242	75.6	75.5	-0.4	0.0	0.0	-0.1	-0.1
Electrical equipment, appliance, and component manufacturing.....	335	4.929	115.2	115.1	0.4	-0.1	0.3	-0.2	-0.1
Transportation equipment manufacturing.....	336	16.945	109.4	110.0	0.5	0.0	0.1	0.0	0.5
Furniture and related product manufacturing.....	337	1.777	115.8	116.0	0.8	0.1	0.0	0.0	0.2
Miscellaneous manufacturing.....	339	5.335	117.5	118.6	1.1	-0.3	0.0	-0.1	0.9

¹ Relative importance figures are based on 2016 trade values.

NOTES: Data may be revised in each of the 3 months after original publication.

Dash = Not available

Table 4. U.S. export price indexes and percent changes for selected industries: January 2017 to January 2018
 [December 2005=100, unless otherwise noted]

Description	NAICS	Relative importance Dec. 2017 ¹	Index		Percent change				
			Dec. 2017	Jan. 2018	Annual Jan. 2017 to Jan. 2018	Monthly			
						Sept. 2017 to Oct. 2017	Oct. 2017 to Nov. 2017	Nov. 2017 to Dec. 2017	Dec. 2017 to Jan. 2018
Nonmanufacturing.....		8.530	138.2	140.1	5.3	3.4	-0.1	0.4	1.4
Agriculture, forestry, fishing and hunting.....	11	5.138	153.4	155.1	1.5	4.1	-1.5	-0.8	1.1
Crop production.....	111	4.729	159.0	160.8	1.1	4.2	-1.7	-0.8	1.1
Mining.....	21	3.392	91.6	93.3	11.5	2.1	2.4	2.1	1.9
Mining (except oil and gas).....	212	1.116	108.3	110.4	8.7	0.6	0.8	0.2	1.9
Manufacturing.....		89.883	114.3	115.2	3.1	-0.1	0.4	0.0	0.8
Manufacturing, part 1.....	31	7.020	139.4	138.5	2.0	0.1	-0.1	0.3	-0.6
Food manufacturing.....	311	4.825	158.3	156.9	2.1	0.1	-0.3	0.3	-0.9
Beverage and tobacco product manufacturing.....	312	0.674	115.2	114.5	6.6	0.0	0.3	-0.2	-0.6
Textile mills (Dec. 2016=100).....	313	0.635	101.7	101.5	0.4	0.1	0.0	0.5	-0.2
Leather and allied product manufacturing (Dec. 2016=100).....	316	0.274	97.3	97.9	-2.2	-0.7	0.7	1.0	0.6
Manufacturing, part 2.....	32	24.826	112.5	114.5	6.8	-0.6	1.8	-0.2	1.8
Wood product manufacturing (Dec. 2017=100).....	321	0.528	100.0	99.4	-	-	-	-	-0.6
Paper manufacturing.....	322	1.650	124.3	124.7	5.5	1.9	0.7	-0.3	0.3
Petroleum and coal products manufacturing.....	324	6.095	105.7	112.2	16.1	-5.0	6.3	-1.7	6.1
Chemical manufacturing.....	325	13.241	116.6	117.4	4.7	0.7	0.5	0.5	0.7
Plastics and rubber products manufacturing.....	326	2.244	114.0	113.9	-0.5	0.0	-0.3	-0.1	-0.1
Nonmetallic mineral product manufacturing.....	327	0.829	114.5	114.2	1.3	0.4	-0.2	-0.1	-0.3
Manufacturing, part 3.....	33	58.037	112.6	113.2	1.9	0.2	-0.1	0.1	0.5
Primary metal manufacturing.....	331	3.846	139.7	142.9	7.1	-2.2	0.5	-0.1	2.3
Fabricated metal product manufacturing.....	332	3.034	137.7	138.3	3.2	0.0	-0.2	-0.1	0.4
Machinery manufacturing.....	333	9.009	125.7	125.9	0.6	-0.2	-0.2	0.2	0.2
Computer and electronic product manufacturing.....	334	14.259	83.3	83.6	1.2	0.8	-0.1	0.0	0.4
Electrical equipment, appliance, and component manufacturing.....	335	3.862	115.7	116.6	3.8	1.8	0.0	0.0	0.8
Transportation equipment manufacturing.....	336	18.193	124.9	125.5	1.5	0.1	0.0	0.1	0.5
Furniture and related product manufacturing (Dec. 2011=100).....	337	0.404	118.1	118.4	0.5	0.2	0.2	0.2	0.3
Miscellaneous manufacturing.....	339	5.429	119.6	119.7	1.4	-0.1	0.2	0.1	0.1

¹ Relative importance figures are based on 2016 trade values.

NOTES: Data may be revised in each of the 3 months after original publication.

Dash = Not available

Table 5. U.S. import price indexes and percent changes for selected categories of goods: January 2017 to January 2018

[2000=100, unless otherwise noted]

Description	Harmoni- zied system	Relative importance Dec. 2017 ¹	Index		Percent change				
			Dec. 2017	Jan. 2018	Annual	Monthly			
					Jan. 2017 to Jan. 2018	Sept. 2017 to Oct. 2017	Oct. 2017 to Nov. 2017	Nov. 2017 to Dec. 2017	Dec. 2017 to Jan. 2018
Live animals; animal products.....	I	1.366	191.0	193.6	2.1	-0.2	-0.1	-0.1	1.4
Meat and edible meat offal.....	02	0.374	245.6	247.4	7.4	0.4	-1.1	0.3	0.7
Fish and crustaceans, molluscs and other aquatic invertebrates.....	03	0.702	138.5	140.9	-3.8	0.5	-1.3	0.2	1.7
Vegetable products.....	II	2.049	220.7	224.4	5.9	-0.9	-2.6	-2.8	1.7
Edible vegetables, roots, and tubers.....	07	0.479	504.8	506.4	24.1	-3.1	16.9	-4.9	0.3
Edible fruit and nuts; peel of citrus fruit or melons.....	08	0.819	128.5	130.9	5.9	-0.3	-11.9	-3.7	1.9
Coffee, tea, mate and spices.....	09	0.332	217.2	218.3	-8.7	-2.0	-1.2	-2.2	0.5
Animal or vegetable fats and oils (Dec. 2009=100).....	III	0.309	116.3	114.4	-1.6	-1.0	0.2	-0.9	-1.6
Prepared foodstuffs, beverages, and tobacco.....	IV	2.767	162.2	162.7	2.3	-0.3	0.0	0.1	0.3
Sugars and sugar confectionary (Dec. 2012=100).....	17	0.195	86.6	90.8	5.6	1.3	-0.7	0.0	4.8
Cocoa and cocoa preparations (Dec. 2009=100).....	18	0.199	94.4	94.4	-6.3	0.0	0.6	-1.3	0.0
Preparations of vegetables, fruit, nuts, or other parts of plants.....	20	0.373	171.3	169.9	6.9	0.6	0.3	-0.2	-0.8
Miscellaneous edible preparations (Dec. 2017=100).....	21	0.204	100.0	99.5	-	-	-	-	-0.5
Beverages, spirits, and vinegar.....	22	1.034	129.2	130.1	2.0	0.2	-0.1	0.1	0.7
Mineral products.....	V	10.454	204.3	214.0	19.5	0.4	9.6	2.7	4.7
Mineral fuels, oils and residuals, bituminous substances and mineral waxes.....	27	10.211	202.2	212.0	19.8	0.3	10.0	2.8	4.8
Products of the chemical or allied industries.....	VI	9.434	154.8	155.8	3.9	0.5	0.8	0.8	0.6
Inorganic chemicals.....	28	0.604	302.8	313.1	19.4	4.5	3.7	7.3	3.4
Organic chemicals.....	29	2.401	129.8	131.2	7.9	0.8	1.6	1.6	1.1
Pharmaceutical products.....	30	4.410	148.2	148.2	0.3	-0.3	0.2	0.0	0.0
Fertilizers (Dec. 2009=100).....	31	0.261	80.4	81.5	6.5	9.0	3.2	-0.9	1.4
Tanning extracts; dye, pigments, varnish, paints & putty (Dec. 2011=100).....	32	0.183	106.3	107.0	5.1	-0.7	-0.5	0.9	0.7
Essential oils and resinoids (Dec. 2016=100).....	33	0.581	102.3	102.5	2.3	0.2	0.1	-0.3	0.2
Miscellaneous chemical products.....	38	0.638	105.8	107.1	4.0	0.3	0.3	0.1	1.2
Plastics and articles thereof; rubber and articles thereof.....	VII	3.431	140.3	139.9	1.5	0.3	-0.1	-0.1	-0.3
Plastics and articles thereof.....	39	2.251	142.8	142.6	2.6	0.6	0.2	-0.3	-0.1
Rubber and articles thereof.....	40	1.180	137.3	136.4	-0.4	-0.2	-0.7	0.4	-0.7
Raw hides, skins, leather, furskins, travel goods, etc.....	VIII	0.638	124.1	124.2	0.7	0.0	0.1	-0.1	0.1
Articles of leather; travel goods, bags, etc. of various materials.....	42	0.602	129.5	129.6	0.9	0.1	0.0	0.0	0.1
Wood, wood charcoal, cork, straw, basketware and wickerwork.....	IX	1.038	162.6	160.5	11.8	2.8	0.4	-1.6	-1.3
Wood and articles of wood; wood charcoal (Dec. 2014=100).....	44	1.014	112.2	110.7	12.2	2.8	0.4	-1.6	-1.3
Woodpulp, recovered paper, and paper products.....	X	1.058	111.4	112.5	2.6	0.5	0.3	0.2	1.0
Paper and paperboard; articles of paper pulp, paper or paperboard.....	48	0.696	103.1	103.8	0.2	0.2	0.0	0.0	0.7

See footnotes at end of table.

Table 5. U.S. import price indexes and percent changes for selected categories of goods: January 2017 to January 2018 — Continued
 [2000=100, unless otherwise noted]

Description	Harmoni- zied system	Relative importance Dec. 2017 ¹	Index		Percent change				
			Dec. 2017	Jan. 2018	Annual Jan. 2017 to Jan. 2018	Monthly			
						Sept. 2017 to Oct. 2017	Oct. 2017 to Nov. 2017	Nov. 2017 to Dec. 2017	Dec. 2017 to Jan. 2018
Printed matter (Dec. 2015=100).....	49	0.205	104.9	105.0	-0.8	0.2	0.0	0.0	0.1
Textile and textile articles.....	XI	5.029	113.5	113.7	0.5	-0.1	-0.2	0.3	0.2
Articles of apparel and clothing accessories, knitted or crocheted.....	61	2.040	103.5	103.9	0.0	-0.3	-0.1	0.0	0.4
Articles of apparel and clothing accessories, not knitted or crocheted.....	62	1.721	118.6	119.1	0.2	-0.3	-0.3	0.2	0.4
Made-up or worn textile articles.....	63	0.653	104.2	104.3	1.1	0.0	0.0	0.3	0.1
Headgear, umbrellas, artificial flowers, etc.....	XII	1.395	122.1	122.0	-0.3	0.1	0.1	0.2	-0.1
Footwear and parts of such articles.....	64	1.169	121.2	121.1	-0.3	0.1	0.2	0.1	-0.1
Stone, plaster, cement, asbestos, ceramics, glass etc.....	XIII	0.930	131.0	131.6	0.8	0.3	-0.1	0.1	0.5
Articles of stone, plaster, cement, asbestos, or mica (Dec. 2015=100).....	68	0.330	97.7	98.0	0.9	0.5	0.0	0.5	0.3
Ceramic products.....	69	0.263	136.7	136.7	-0.3	0.4	0.1	0.1	0.0
Glass and glassware.....	70	0.337	130.6	131.7	1.5	0.1	-0.2	-0.4	0.8
Pearls, stones, precious metals, imitation jewelry, and coins.....	XIV	3.056	171.0	175.1	6.2	-2.5	0.8	-0.6	2.4
Base metals and articles of base metals. ...	XV	5.470	173.9	177.2	9.9	0.9	0.7	-0.9	1.9
Iron and steel.....	72	1.218	203.1	209.4	13.4	1.8	0.1	-0.6	3.1
Articles of iron or steel.....	73	1.595	149.4	150.9	9.2	1.2	0.2	0.2	1.0
Copper and articles thereof.....	74	0.411	293.2	306.5	15.8	-2.9	2.8	-2.3	4.5
Aluminum and articles thereof.....	76	0.934	135.6	137.4	12.3	2.6	0.9	-1.4	1.3
Tools, implements, cutlery, spoons and forks, of base metal; parts thereof.....	82	0.419	121.8	122.1	-0.6	-0.8	0.0	-0.1	0.2
Miscellaneous articles of base metal.....	83	0.525	137.9	136.5	1.0	0.1	0.0	0.1	-1.0
Machinery, electrical equipment, TV image and sound recorders, parts, etc.....	XVI	29.211	80.6	80.5	0.1	0.1	0.0	-0.1	-0.1
Machinery and mechanical appliances; parts thereof.....	84	14.256	86.6	86.5	1.3	0.2	0.0	0.0	-0.1
Electrical machinery and equip, sound and TV recorders & reproducers, parts.....	85	14.955	75.0	74.8	-0.9	-0.1	0.0	-0.1	-0.3
Vehicles, aircraft, vessels and associated transport equipment.....	XVII	14.097	113.9	114.7	0.8	0.0	0.0	0.0	0.7
Motor vehicles and their parts.....	87	12.877	112.8	113.7	1.1	-0.1	0.0	0.0	0.8
Aircraft, spacecraft, and parts thereof (Dec. 2002=100).....	88	1.127	116.1	116.7	-1.8	0.2	0.2	0.2	0.5
Optical, photo, measuring, medical & musical instruments; & timepieces.....	XVIII	3.859	101.6	103.7	2.1	0.0	-0.3	-0.1	2.1
Optical, photographic, measuring and medical instruments.....	90	3.567	98.1	100.4	2.0	0.0	-0.3	-0.2	2.3
Clocks and watches and parts thereof.....	91	0.234	144.4	141.5	0.8	0.0	0.0	0.3	-2.0
Miscellaneous manufactured articles.....	XX	4.320	111.4	111.4	0.1	0.1	0.2	0.0	0.0
Furniture & stuffed furnishings; lamps & lighting fittings, nesoi; prefab bldgs.....	94	2.721	117.1	117.2	0.7	0.0	0.3	-0.1	0.1
Toys, games and sports equipment; parts and accessories thereof.....	95	1.311	101.6	101.7	-1.0	0.0	0.1	0.2	0.1
Miscellaneous manufactured articles.....	96	0.288	129.6	128.6	-0.8	0.0	0.0	-0.1	-0.8

¹ Relative importance figures are based on 2016 trade values.

NOTES: Data may be revised in each of the 3 months after original publication.

Dash = Not available

Table 6. U.S. export price indexes and percent changes for selected categories of goods: January 2017 to January 2018
 [2000=100, unless otherwise noted]

Description	Harmoni- zied system	Relative importance Dec. 2017 ¹	Index		Percent change				
			Dec. 2017	Jan. 2018	Annual Jan. 2017 to Jan. 2018	Monthly			
						Sept. 2017 to Oct. 2017	Oct. 2017 to Nov. 2017	Nov. 2017 to Dec. 2017	Dec. 2017 to Jan. 2018
Live animals; animal products.....	I	1.963	207.6	206.6	5.2	0.1	-1.1	0.5	-0.5
Meat & edible meat offal (Dec. 2006=100)...	02	1.201	166.6	167.0	11.4	0.1	-1.3	1.2	0.2
Fish and crustaceans, mollusks and aquatic invertebrates (Dec. 2016=100).....	03	0.406	112.8	114.4	8.8	2.5	-0.6	0.5	1.4
Dairy products, eggs and honey (Dec. 2017=100).....	04	0.276	100.0	93.3	-	-	-	-	-6.7
Vegetable products.....	II	4.746	192.8	195.1	1.0	4.9	-2.2	-1.5	1.2
Edible fruit and nuts; peel of citrus fruit or melons.....	08	0.936	146.1	147.6	0.2	1.9	2.6	-1.5	1.0
Cereals.....	10	1.378	180.7	183.5	5.3	2.7	0.7	0.4	1.5
Oilseeds and misc. grains, seeds, fruits, plants, straw and fodder.....	12	1.989	204.4	199.3	-2.1	-0.2	0.3	2.2	-2.5
Prepared foodstuffs, beverages, and tobacco.....	IV	3.088	149.3	149.7	1.9	0.0	-0.2	0.1	0.3
Preparations of vegetables, fruit, nuts or other parts of plants (Dec. 2009=100)....	20	0.352	117.2	117.7	0.9	0.6	0.0	0.0	0.4
Miscellaneous edible preparations (Dec. 2017=100).....	21	0.595	100.0	102.1	-	-	-	-	2.1
Beverages, spirits, and vinegar (Dec. 2008=100).....	22	0.527	106.3	105.5	-4.8	-0.5	-2.4	-2.7	-0.8
Residues and waste from the food industries; prepared animal feed.....	23	0.696	203.0	202.0	1.8	0.7	2.1	1.7	-0.5
Mineral products.....	V	9.809	222.1	232.4	17.0	-2.5	5.2	-0.2	4.6
Ores, slag and ash (Dec. 2012=100).....	26	0.542	105.4	109.0	23.9	1.5	2.1	0.3	3.4
Mineral fuels, oils and residuals, bituminous substances and mineral waxes.....	27	9.092	212.9	223.1	16.9	-2.8	5.5	-0.2	4.8
Products of the chemical or allied industries.....	VI	10.800	136.6	137.5	3.2	0.2	0.2	0.8	0.7
Inorganic chemicals.....	28	0.740	162.8	165.4	-8.0	0.6	0.4	2.6	1.6
Organic chemicals.....	29	2.463	136.8	139.0	7.9	-0.2	0.6	0.4	1.6
Pharmaceutical products.....	30	3.238	105.6	107.7	4.3	0.1	-0.5	0.6	2.0
Fertilizers (Dec. 2016=100).....	31	0.236	107.8	109.2	9.2	0.0	2.3	0.7	1.3
Tanning or dyeing extracts, dyes, paints varnish, putty, & inks (Dec. 2015=100)....	32	0.539	101.4	99.8	2.7	2.6	-0.1	-0.5	-1.6
Essential oils and resinoids; perfumery cosmetic or toilet preparations.....	33	0.840	132.7	129.0	-2.1	-0.3	0.4	0.1	-2.8
Soap; lubricants; waxes, polishing or scouring products; candles, pastes.....	34	0.533	126.7	126.6	8.2	-2.2	0.6	-0.2	-0.1
Miscellaneous chemical products.....	38	1.824	150.3	150.9	3.5	1.2	0.6	2.3	0.4
Plastics and articles thereof; rubber and articles thereof.....	VII	5.099	139.4	139.3	2.1	1.4	0.4	-0.7	-0.1
Plastics and articles thereof.....	39	4.227	135.9	135.9	3.3	1.4	0.8	-0.8	0.0
Rubber and articles thereof.....	40	0.872	153.1	152.5	-3.1	1.5	-1.5	-0.4	-0.4
Wood, wood charcoal, cork, straw, baskets and wickerwork (Dec. 2014=100).....	IX	0.681	103.7	101.7	8.3	2.9	0.8	-0.8	-1.9
Woodpulp, recovered paper, and paper products.....	X	2.049	128.2	127.9	2.2	-3.9	6.0	-0.2	-0.2
Woodpulp and recovered paper.....	47	0.638	136.1	135.0	-2.9	-15.6	19.9	0.5	-0.8
Paper and paperboard; articles of paper pulp, paper or paperboard.....	48	1.077	123.7	124.0	5.1	1.7	0.0	-0.6	0.2
Printed material (Dec. 2014=100).....	49	0.334	105.1	104.5	3.9	0.0	3.5	0.0	-0.6
Textile and textile articles.....	XI	1.660	120.7	122.1	0.9	0.0	0.3	0.5	1.2

See footnotes at end of table.

Table 6. U.S. export price indexes and percent changes for selected categories of goods: January 2017 to January 2018 — Continued
 [2000=100, unless otherwise noted]

Description	Harmonized system	Relative importance Dec. 2017 ¹	Index		Percent change				
			Dec. 2017	Jan. 2018	Annual	Monthly			
					Jan. 2017 to Jan. 2018	Sept. 2017 to Oct. 2017	Oct. 2017 to Nov. 2017	Nov. 2017 to Dec. 2017	Dec. 2017 to Jan. 2018
Cotton, including yarns and woven fabrics thereof.....	52	0.441	128.2	132.3	4.8	-1.5	1.9	2.2	3.2
Stone, plaster, cement, asbestos, ceramics, glass etc.....	XIII	0.815	123.4	123.2	0.7	0.2	-0.1	0.0	-0.2
Articles of stone, plaster, cement, asbestos, or mica (Dec. 2015=100).....	68	0.272	101.3	101.2	1.2	0.1	-0.1	0.0	-0.1
Glass and glassware.....	70	0.416	98.9	98.6	-1.0	0.3	-0.1	0.0	-0.3
Pearls, stones, precious metals, imitation jewelry, and coins.....	XIV	4.091	235.0	239.7	7.3	-2.5	0.3	-0.2	2.0
Base metals and articles of base metals. ...	XV	4.883	156.8	159.2	6.8	-0.2	-0.2	0.3	1.5
Iron and steel.....	72	1.022	161.4	168.0	7.4	-2.0	-3.9	1.5	4.1
Copper and articles thereof.....	74	0.569	197.2	204.4	23.0	1.0	2.6	0.8	3.7
Aluminum and articles thereof.....	76	0.966	118.1	118.2	10.6	0.1	2.7	-0.8	0.1
Tools, implements, cutlery, spoons and forks, of base metal (Dec. 2015=100). ...	82	0.319	99.5	99.8	0.0	0.0	0.0	0.0	0.3
Miscellaneous articles of base metal.....	83	0.339	148.1	149.3	1.1	0.0	0.0	-0.1	0.8
Machinery, electrical equipment, TV image and sound recorders, parts, etc.....	XVI	27.848	96.8	97.0	1.4	0.5	-0.1	0.2	0.2
Machinery and mechanical appliances; parts thereof.....	84	15.915	113.6	113.9	0.8	0.1	-0.2	-0.1	0.3
Electrical machinery and equipment and parts and accessories thereof.....	85	11.933	78.5	78.8	2.3	1.0	-0.1	0.6	0.4
Vehicles, aircraft, vessels and associated transport equipment.....	XVII	14.353	133.4	134.0	1.4	0.0	0.0	0.2	0.4
Motor vehicles and their parts.....	87	8.358	115.1	115.5	0.3	-0.1	-0.1	-0.1	0.3
Optical, photo, measuring, medical & musical instruments; & timepieces.....	XVIII	5.977	107.8	108.3	2.3	0.7	0.1	0.2	0.5
Miscellaneous manufactured articles.....	XX	1.417	112.1	112.4	-0.2	0.1	-0.1	-0.1	0.3
Furniture; stuffed furnishings; lamps and lighting fittings nesoi;.....	94	0.826	128.4	128.4	-0.1	0.1	-0.1	0.2	0.0
Toys, games and sports equipment; parts and accessories thereof.....	95	0.428	88.1	89.1	-0.4	0.1	0.0	-0.8	1.1

¹ Relative importance figures are based on 2016 trade values.

NOTES: Data may be revised in each of the 3 months after original publication.

Dash = Not available

Table 7. U.S. import price indexes and percent changes by locality of origin: January 2017 to January 2018
 [2000=100, unless otherwise noted]

Description	Relative importance Dec. 2017 ¹	Index		Percent change				
		Dec. 2017	Jan. 2018	Annual	Monthly			
				Jan. 2017 to Jan. 2018	Sept. 2017 to Oct. 2017	Oct. 2017 to Nov. 2017	Nov. 2017 to Dec. 2017	Dec. 2017 to Jan. 2018
Industrialized Countries²	100.000	122.5	124.3	4.7	0.0	1.1	0.6	1.5
Nonmanufacturing.....	9.104	157.1	168.0	22.2	0.8	8.9	4.2	6.9
Manufacturing.....	90.404	119.2	120.2	3.0	0.0	0.3	0.2	0.8
Canada	100.000	131.7	135.0	8.5	0.6	2.9	1.1	2.5
Nonmanufacturing.....	24.505	150.6	161.3	22.0	0.7	9.4	4.5	7.1
Manufacturing.....	74.648	130.1	131.3	4.2	0.7	0.9	-0.2	0.9
European Union³	100.000	134.7	135.4	2.4	-0.1	0.3	0.3	0.5
Manufacturing.....	99.016	131.3	131.9	2.4	-0.1	0.3	0.3	0.5
France (Dec. 2003=100)	100.000	125.9	127.4	5.0	0.3	0.1	0.0	1.2
Germany (Dec. 2003=100)	100.000	115.2	111.7	-1.2	0.2	0.0	-0.1	-3.0
United Kingdom (Dec. 2003=100)	100.000	119.8	121.1	3.1	0.3	0.7	0.3	1.1
Latin America⁴	100.000	149.2	151.3	6.3	0.5	1.2	0.3	1.4
Nonmanufacturing.....	18.437	256.3	269.7	18.2	-0.8	4.1	1.5	5.2
Manufacturing.....	81.287	122.2	122.9	3.6	0.8	0.5	0.1	0.6
Mexico (Dec. 2003=100)	100.000	129.3	130.2	5.9	-0.2	0.1	0.2	0.7
Nonmanufacturing (Dec. 2008=100).....	8.904	136.7	141.8	24.0	-6.1	-2.8	2.7	3.7
Manufacturing (Dec. 2008=100).....	90.849	89.1	89.4	4.2	0.5	0.5	0.0	0.3
Pacific Rim (Dec. 2003=100)⁵	100.000	98.4	98.5	0.3	-0.1	0.1	0.0	0.1
China (Dec. 2003=100)	100.000	100.1	100.1	0.2	0.0	0.3	0.0	0.0
Japan	100.000	95.5	96.1	-0.1	-0.3	0.0	0.0	0.6
Asian NICs⁶	100.000	87.6	87.9	4.1	0.2	-0.3	0.5	0.3
ASEAN (Dec. 2003=100)⁷	100.000	98.1	98.5	1.1	0.0	-0.1	0.1	0.4
Asia Near East (Dec. 2003=100)⁸	100.000	174.0	179.1	13.5	5.2	4.7	2.4	2.9

¹ Relative importance figures are based on 2016 trade values.

² Western Europe, Canada, Japan, Australia, New Zealand, and South Africa.

³ European Union countries.

⁴ Mexico, Central America, South America, and the Caribbean.

⁵ China, Japan, Australia, Brunei, Indonesia, Macao, Malaysia, New Zealand, Papua New Guinea, Philippines, and the Asian Newly Industrialized Countries.

⁶ Asian Newly Industrialized Countries - Hong Kong, Singapore, South Korea, and Taiwan.

⁷ Association of Southeast Asian Nations - Brunei, Cambodia, Indonesia, Laos, Malaysia, Myanmar, Philippines, Singapore, Thailand, and Vietnam.

⁸ Bahrain, Iran, Iraq, Israel, Jordan, Kuwait, Lebanon, Oman, Qatar, Saudi Arabia, Syria, United Arab Emirates, and Yemen.

NOTES: Data may be revised in each of the 3 months after original publication.

Regions are not mutually exclusive.

Dash = Not available

Table 8. U.S. international price indexes and percent changes for selected transportation services: January 2017 to January 2018

[2000=100, unless otherwise noted]

Description	Relative importance Dec. 2017 ¹	Index		Percent change				
		Dec. 2017	Jan. 2018	Annual	Monthly			
				Jan. 2017 to Jan. 2018	Sept. 2017 to Oct. 2017	Oct. 2017 to Nov. 2017	Nov. 2017 to Dec. 2017	Dec. 2017 to Jan. 2018
Air Freight								
Import Air Freight	100.000	181.6	176.1	8.7	-4.3	6.9	-2.9	-3.0
Europe (Dec. 2003=100).....	24.049	144.0	144.6	6.4	-3.0	0.5	0.1	0.4
Asia.....	63.701	175.0	166.4	11.2	-5.5	10.5	-4.5	-4.9
Export Air Freight	100.000	167.5	167.8	7.5	5.4	1.8	-1.4	0.2
Europe (Dec. 2006=100).....	32.331	148.9	148.3	1.2	1.5	0.0	-0.8	-0.4
Inbound Air Freight	100.000	169.8	169.9	10.6	-2.6	5.5	-0.6	0.1
Europe (Dec. 2003=100).....	25.119	131.6	133.0	0.5	-5.1	-1.7	3.4	1.1
Asia.....	61.343	166.7	162.1	15.0	-2.3	9.5	-2.2	-2.8
Outbound Air Freight	100.000	141.1	140.8	0.7	1.0	1.4	-0.9	-0.2
Europe (Dec. 2003=100).....	32.870	144.6	144.6	-0.9	0.0	2.6	-2.0	0.0
Asia.....	42.994	136.1	136.4	1.9	0.2	2.1	-0.5	0.2
Air Passenger Fares								
Import Air Passenger Fares	100.000	194.0	187.7	2.6	8.8	-2.3	6.5	-3.2
Europe.....	41.465	216.8	234.0	8.6	9.9	3.2	-1.0	7.9
Asia.....	24.028	152.0	135.1	0.9	0.3	-4.6	17.6	-11.1
Latin America/Caribbean.....	9.871	180.0	156.6	1.2	1.6	4.7	10.8	-13.0
Export Air Passenger Fares	100.000	158.7	167.6	-1.0	3.6	0.5	3.3	5.6
Europe.....	29.693	203.5	193.1	-5.4	3.1	1.0	-5.2	-5.1
Asia.....	25.917	134.2	151.0	-2.8	-2.4	2.8	12.5	12.5
Latin America/Caribbean.....	24.508	169.4	182.8	4.3	-1.7	2.4	3.4	7.9

¹ Relative importance figures are based on 2016 trade values.

NOTES: Data may be revised in each of the 3 months after original publication.

Dash = Not available

TECHNICAL NOTE

Import and Export Merchandise and Services Price Indexes - All indexes use a modified Laspeyres formula and are not seasonally adjusted. Price indexes are reweighted annually, with a 2-year lag in the weights. Published series use a base year of 2000=100 where possible. More detailed index series and additional information may be obtained at www.bls.gov/mxp or by calling (202) 691-7101.

Merchandise Goods Classification Systems - The merchandise price indexes are published using three classification systems. Items are classified by end use according to the Bureau of Economic Analysis Classification System, by industry according to the North American Industry Classification System (NAICS), and by product category according to the Harmonized System (HS). While classification by end use and product category are self-explanatory, some notes are in order for classifying items by industry. In the NAICS imports and exports tables, items are classified by output industry, not input industry. As an example, NAICS import index 326 (plastics and rubber products manufacturing) include outputs such as manufactured plastic rather than inputs such as petroleum. The NAICS classification structure also matches the classification system used by the Producer Price Index (PPI) to produce the NAICS primary products indexes.

Import Price Indexes - Products have been classified by the Harmonized Tariff Schedule of the United States Annotated (TSUSA). Import prices are based on U.S. dollar prices paid by the U.S. importer. The prices are generally either "free on board" (f.o.b.) foreign port or "cost, insurance, and freight" (c.i.f.) U.S. port transaction prices, depending on the practices of the individual industry. The index for crude petroleum is calculated from data collected by the U.S. Department of Energy.

Export Price Indexes - Products have been classified by the Harmonized Schedule B classification system of the U.S. Bureau of the Census. The prices used are generally either "free alongside ship" (f.a.s.) factory or "free on board" (f.o.b.) transaction prices, depending on the practices of the individual industry. Prices used in the grain index, excluding rice, are obtained from the U.S. Department of Agriculture.

Services Price Indexes - Starting in September 2008, the import air passenger fares indexes represent changes in the average revenue per passenger received by foreign carriers from U.S. residents and are calculated from data obtained from an airline consulting service. These data include tickets sold by travel agencies and travel websites. Tickets sold directly by the airlines are excluded, as are frequent flyer tickets generally. Starting in January 2008, the export air passenger fares indexes represent changes in the average revenue per passenger received by U.S. carriers from foreign residents and are calculated from data collected directly from airlines. These data include frequent flyer tickets and those sold by consolidators. Taxes and fees are included in the import air passenger fares indexes and excluded from the export air passenger fares indexes. The air freight indexes are calculated from data collected directly from airlines. These data exclude mail and passenger baggage. The scope of the service being priced is the movement of freight from airport to airport only, and does not include any ground transportation or port service. The air freight indexes are presented using two definitions: balance of payments (which represent transactions between U.S. and foreign residents) and international (which represent transactions inbound to and outbound from the U.S.). Fact sheets specifying detailed information for each services industry are available at www.bls.gov/mxp under "MXP Publications."

Import Indexes by Locality of Origin - Prices used in these indexes are a subset of the data collected for the import price indexes. Beginning with January 2002, the indexes are defined by locality of origin using a nomenclature based upon the North American Industry Classification System (NAICS). Nonmanufactured goods are defined as NAICS 11 and 21, and manufactured goods are defined as NAICS 31-33.

Relative Importance - A relative importance is a specific index's price-updated value share (expressed as a percentage) of overall imports or exports at a specific point in time. Relative importance values are affected by the trade weights at the point indexes are reweighted and index changes relative to other indexes since the reweight point. If an index is rising in value relative to other indexes over time, the relative importance will increase as well.

Revision Policy - To reflect the availability of late reports and corrections by respondents, monthly data may be revised in each of the 3 months after original publication. After 3 months, no further data revisions take place. For example, data first published in the January release will be subject to revision in the releases for February, March, and April.

Uses of the Data - The primary use of the indexes is to deflate trade statistics, notably the foreign trade sector of the National Income and Product Accounts (NIPA) constructed by the Department of Commerce. Other published indexes are useful for general market analysis. For trade in international services, balance of payments indexes are used for deflating NIPA, while international indexes are more appropriate for market analysis. Merchandise and services indexes also can be used to study U.S. competitiveness and to compute price elasticities, and the merchandise import indexes by country or region of origin are useful in terms of trade analysis.

Email Subscription - The U.S. import and export price indexes news release is available through an email subscription service at www.bls.gov/bls/list.htm.

Additional Information - More detailed data are available on the Import/Export Price Indexes home page at www.bls.gov/mxp. For import and export price indexes data requests, send an email to mxpinfo@bls.gov.

Information from this release will be made available to sensory impaired individuals upon request. Voice phone: (202)-691-5200; Federal Relay Service: 1-(800)-877-8339.