



**Transmission of material in this release is embargoed until  
 8:30 a.m. (EST) Thursday, December 14, 2017**

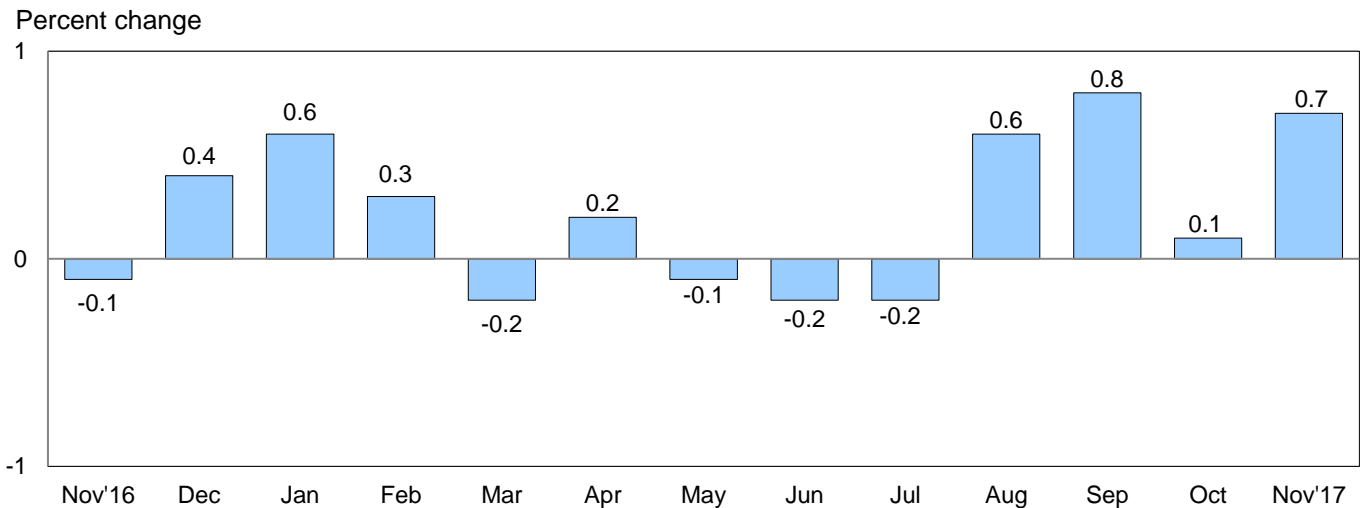
USDL-17-1645

Technical information: (202) 691-7101 • [MXPinfo@bls.gov](mailto:MXPinfo@bls.gov) • [www.bls.gov/mxp](http://www.bls.gov/mxp)  
 Media contact: (202) 691-5902 • [PressOffice@bls.gov](mailto:PressOffice@bls.gov)

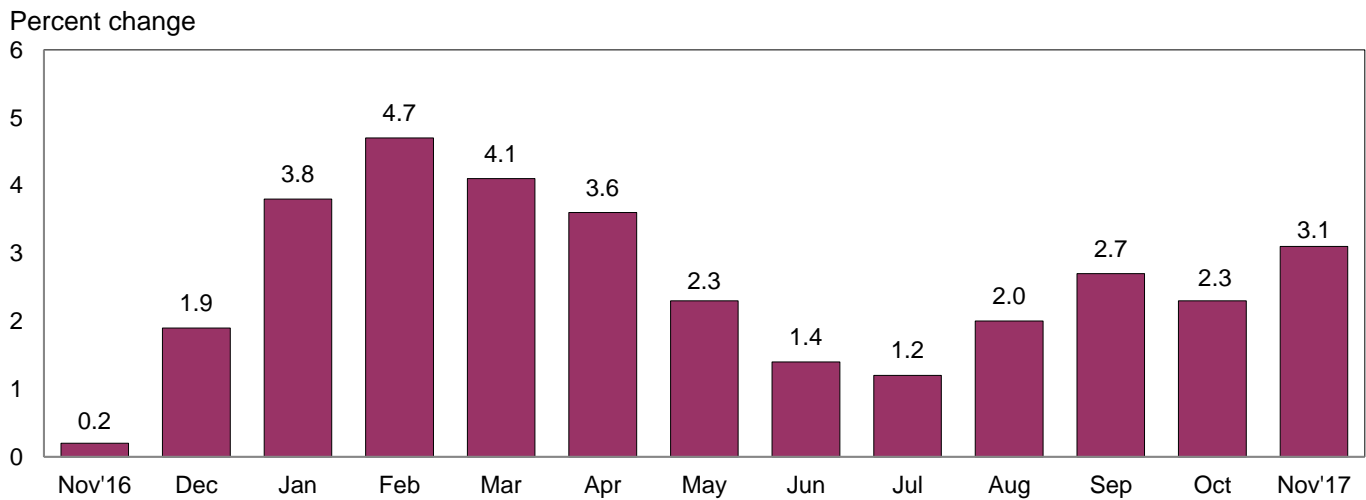
**U.S. IMPORT AND EXPORT PRICE INDEXES – NOVEMBER 2017**

U.S. import prices rose 0.7 percent in November, the U.S. Bureau of Labor Statistics reported today, after ticking up 0.1 percent in October. Higher prices for fuel drove the increase in November and nonfuel prices recorded no change. U.S. export prices increased 0.5 percent in November following a 0.1-percent advance the previous month.

**Chart 1. One-month percent change in the Import Price Index: November 2016 – November 2017**



**Chart 2. 12-month percent change in the Import Price Index: November 2016 – November 2017**



**All Imports:** Import prices advanced 0.7 percent in November following rises of 0.1 percent in October and 0.8 percent in September. Higher fuel prices were the main contributor to the overall advance in import prices for November. The import price index increased 3.1 percent over the past 12 months. U.S. import prices have not recorded an over-the-year decline since a 0.2-percent drop in October 2016.

**Fuel Imports:** The import price index for fuels rose 7.6 percent in November, after a 0.2-percent increase in October. Rising prices for import petroleum and natural gas contributed to the increase. Petroleum prices advanced 7.2 percent in November, the largest monthly rise since the index increased 7.5 percent in October 2016. Natural gas prices rose 26.3 percent, the first monthly advance since the index increased 8.0 percent in April and the largest rise since the index advanced 28.0 percent in July 2016. Import fuel prices rose 22.2 percent over the past year driven by a 24.1-percent increase in petroleum prices. In contrast, import prices for natural gas decreased 5.6 percent for the year ended in November.

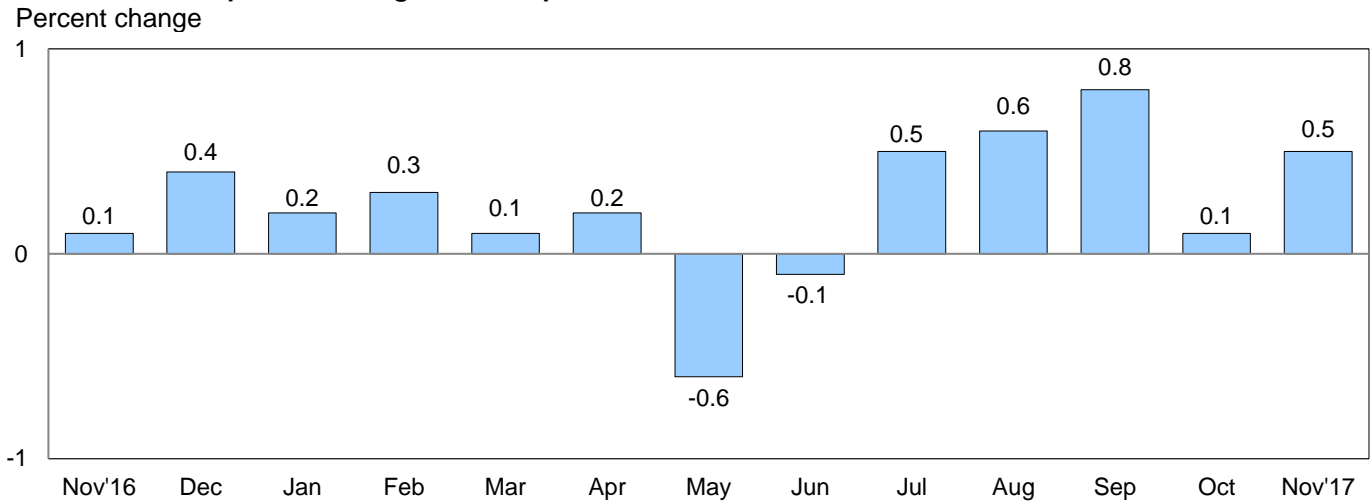
**All Imports Excluding Fuel:** Nonfuel import prices recorded no change in November following a 0.1-percent rise in October. Lower prices for foods, feeds, and beverages offset higher prices for nonfuel industrial supplies and materials, consumer goods, and automotive vehicles. Import capital goods prices recorded no change in November. The price index for nonfuel imports advanced 1.4 percent between November 2016 and November 2017. The 12-month increase was driven by higher prices for nonfuel industrial supplies and materials, capital goods, and consumer goods which more than offset lower prices for automotive vehicles and foods, feeds, and beverages. The last over-the-year decline in nonfuel import prices was a 0.2-percent decrease for the 12-month period ended November 2016.

**Table A. Percent change in Import and Export Price Indexes, selected categories**

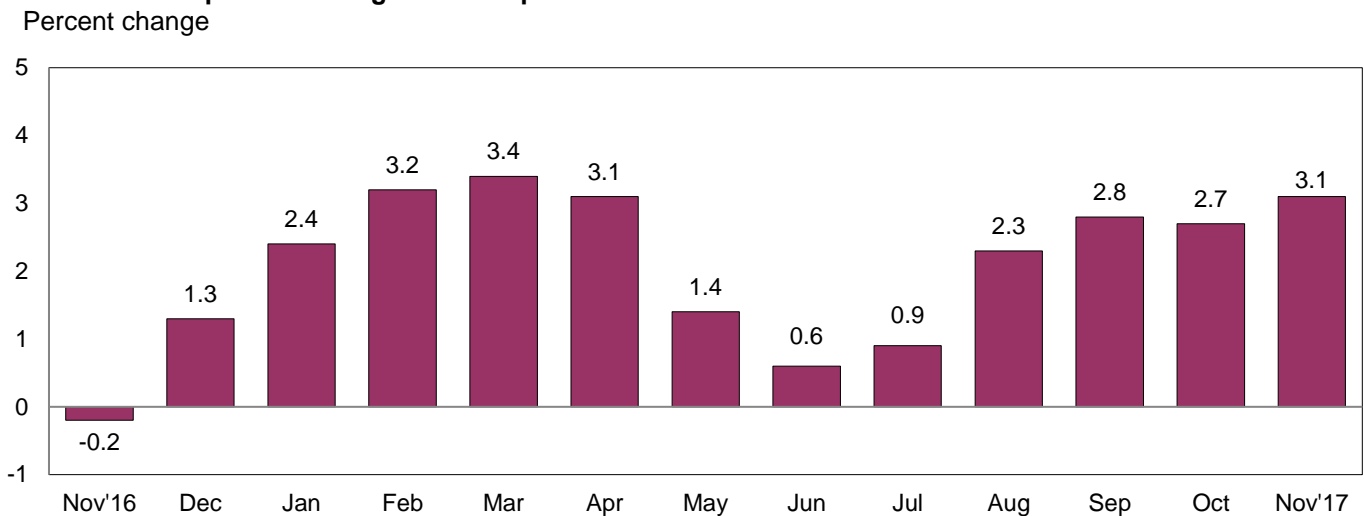
Month	IMPORTS			EXPORTS		
	All imports	Fuel imports	Nonfuel imports	All exports	Agricultural exports	Non-agricultural exports
<b>2016</b>						
November.....	-0.1	-1.1	-0.1	0.1	0.7	0.0
December.....	0.4	5.8	0.0	0.4	-0.2	0.4
<b>2017</b>						
January.....	0.6	6.1	-0.1	0.2	0.4	0.2
February.....	0.3	0.3	0.3	0.3	1.4	0.3
March.....	-0.2	-3.0	0.2	0.1	1.1	0.0
April.....	0.2	-0.4	0.3	0.2	0.1	0.3
May.....	-0.1	-0.9	0.1	-0.6	-1.6	-0.4
June.....	-0.2	-3.6	0.1	-0.1	-1.4	0.0
July.....	-0.2	-1.0	-0.1	0.5	1.8	0.3
August.....	0.6	4.0 <sup>r</sup>	0.3	0.6 <sup>r</sup>	0.0 <sup>r</sup>	0.7 <sup>r</sup>
September.....	0.8	5.7 <sup>r</sup>	0.3	0.8 <sup>r</sup>	-0.7	0.9
October.....	0.1 <sup>r</sup>	0.2 <sup>r</sup>	0.1 <sup>r</sup>	0.1 <sup>r</sup>	1.9	-0.1 <sup>r</sup>
November.....	0.7	7.6	0.0	0.5	-0.6	0.6
Nov. 2015 to 2016.....	0.2	6.1	-0.2	-0.2	-1.1	-0.2
Nov. 2016 to 2017.....	3.1	22.2	1.4	3.1	2.1	3.2

r Revised

**Chart 3. One-month percent change in the Export Price Index: November 2016 – November 2017**



**Chart 4. 12-month percent change in the Export Price Index: November 2016 – November 2017**



**All Exports:** The export price index rose 0.5 percent in November, after ticking up 0.1 percent in October and advancing 0.8 percent in September. In November, higher nonagricultural export prices offset lower prices for agricultural exports. U.S. export prices advanced 3.1 percent over the past 12 months and have not recorded an over-the-year decrease since the index fell 0.2 percent in November 2016.

**Agricultural Exports:** Agricultural export prices declined 0.6 percent in November following a 1.9-percent increase in October. Lower prices for vegetables and meats led the drop, more than offsetting higher prices for fruit. The agricultural export price index rose 2.1 percent for the year ended in November, driven by advancing prices for meat, wheat, and nuts.

**All Exports Excluding Agriculture:** The nonagricultural export price index increased 0.6 percent in November, after edging down 0.1 percent in October. Export nonagricultural industrial supplies and materials prices advanced in November, driving the monthly rise despite lower prices for capital goods and automotive vehicles. Export consumer goods prices recorded no change. Nonagricultural export prices increased 3.2 percent for the 12 months ended in November, continuing an upward trend since the index last fell on an over-the-year basis in November 2016. The price indexes for export nonagricultural industrial supplies and materials, capital goods, and automotive vehicles contributed to the 12-month advance.

## SELECTED NOVEMBER HIGHLIGHTS

### Import Prices

**Imports by Locality of Origin:** Prices for imports from China increased 0.3 percent in November, after recording no change in October. The price index for imports from China has not recorded an increase larger than 0.3 percent since advancing 0.4 percent in October 2011. Despite the rise, import prices from China edged down 0.1 percent over the past year. Import prices from Japan decreased 0.1 percent in November. Prices for imports from Japan fell 1.2 percent between November 2016 and November 2017, the largest 12-month drop since a 1.3-percent decline for the year ended April 2016. Prices for imports from Canada increased 2.2 percent in November, the largest monthly rise since the index increased 2.3 percent in June 2016. The price index for imports from the European Union ticked up 0.1 percent in November and import prices from Mexico edged down 0.1 percent.

**Nonfuel Industrial Supplies and Materials:** The import price index for nonfuel industrial supplies and materials advanced 0.9 percent in November, following a 0.8-percent increase in October. Higher prices for import chemicals and nonferrous metals drove the November advance. Nonfuel industrial supplies and materials import prices rose 8.8 percent over the past year, driven by higher prices for unfinished metals.

**Finished Goods:** Import finished goods prices were mixed in November. The price indexes for consumer goods and automotive vehicles each rose 0.1 percent. Import prices for capital goods recorded no change.

**Foods, Feeds, and Beverages:** The price index for import foods, feeds, and beverages declined 1.7 percent in November, after decreasing 0.4 percent in October. The drop was led by an 11.1-percent decrease in fruit prices and a 1.4-percent decline in fish and shellfish prices. Those decreases more than offset a 6.9-percent increase in vegetable prices.

**Transportation Services:** Import air passenger fares declined 2.3 percent in November, after an 8.8-percent increase in October. A 4.6-percent drop in Asian fares offset higher European and Latin America/Caribbean fares. Import air passenger fares declined 0.9 percent over the past 12 months. Import air freight prices increased 6.9 percent in November and rose 13.0 percent over the past year.

### Export Prices

**Nonagricultural Industrial Supplies and Materials:** Prices for nonagricultural industrial supplies and materials exports rose 2.1 percent in November. A 5.3-percent increase in fuel prices led the overall advance in November. Nonagricultural industrial supplies and materials prices increased 8.3 percent over the past year.

**Finished Goods:** Export prices for capital goods edged down 0.1 percent in November; the first decrease since the index fell 0.1 percent in October 2016. A 0.7-percent decline in telecommunications equipment prices led the November drop despite a 0.5-percent increase in computer peripherals, accessories and parts prices. Automotive vehicle prices fell 0.1 percent and prices for consumer goods recorded no change.

**Transportation Services:** Export air passenger fares rose 0.4 percent in November, led by increases in European, Latin America/Caribbean, and Asian fares. Despite the increase, export air passenger fares declined 1.7 percent for the year ended in November. The export air freight price index advanced 1.8 percent in November and increased 9.9 percent over the past year.

---

**Import and Export Price Index data for December 2017 are scheduled for release on Wednesday, January 10, 2018 at 8:30 a.m. (EST).**

**Table 1. U.S. import price indexes and percent changes for selected categories of goods: November 2016 to November 2017**

[2000=100, unless otherwise noted]

Description	End Use	Relative importance Oct. 2017 <sup>1</sup>	Index		Percent change				
			Oct. 2017	Nov. 2017	Annual	Monthly			
					Nov. 2016 to Nov. 2017	July 2017 to Aug. 2017	Aug. 2017 to Sept. 2017	Sept. 2017 to Oct. 2017	Oct. 2017 to Nov. 2017
<b>All commodities</b> .....		100.000	124.0	124.9	3.1	0.6	0.8	0.1	0.7
<b>All imports excluding food and fuels (Dec. 2010=100)</b> .....		84.225	99.4	99.5	1.4	0.2	0.2	0.1	0.1
<b>All imports excluding petroleum</b> .....		91.072	112.5	112.6	1.4	0.2	0.3	0.1	0.1
<b>All imports excluding fuels (Dec. 2001=100)</b> .....		90.535	116.7	116.7	1.4	0.3	0.3	0.1	0.0
<b>Foods, feeds, &amp; beverages</b> .....	0	6.260	184.6	181.5	-0.4	0.2	1.8	-0.4	-1.7
Agricultural foods, feeds & beverages, excluding distilled beverages.....	00	4.930	203.7	199.9	-0.3	0.4	2.3	-0.7	-1.9
Nonagricultural foods (fish, distilled beverages).....	01	1.329	140.9	139.6	-1.0	-0.4	-0.4	0.5	-0.9
<b>Industrial supplies &amp; materials</b> .....	1	23.277	175.5	181.8	14.1	2.1	3.2	0.6	3.6
Industrial supplies & materials excluding petroleum.....		14.523	150.9	153.2	8.2	0.8	1.2	0.5	1.5
Industrial supplies & materials excluding fuels (Dec. 2001=100).....		13.846	172.6	174.2	8.8	1.0	1.5	0.8	0.9
Industrial supplies & materials, durable....		8.686	164.4	165.6	10.6	1.5	2.1	0.2	0.7
Industrial supplies & materials nondurable excluding petroleum.....		5.663	134.1	137.6	4.8	-0.3	-0.1	1.1	2.6
Fuels & lubricants.....	10	9.465	181.6	195.4	22.2	4.0	5.7	0.2	7.6
Petroleum & petroleum products.....	100	8.928	198.6	212.8	24.1	4.6	6.5	0.5	7.2
Crude.....	10000	6.379	205.0	217.2	26.6	3.6	5.6	3.0	6.0
Fuels, n.e.s.-coals & gas.....	101	0.386	81.7	97.9	-4.5	-4.2	-6.4	-4.9	19.8
Gas-natural.....	10110	0.290	65.0	82.1	-5.6	-5.9	-7.9	-5.4	26.3
Paper & paper base stocks.....	11	0.546	108.6	109.3	4.7	-0.3	-0.1	0.9	0.6
Materials associated with nondurable supplies & materials.....	12	4.646	156.3	158.3	5.9	0.1	0.6	1.8	1.3
Selected building materials.....	13	1.508	152.6	153.5	12.5	1.9	-0.5	2.1	0.6
Unfinished metals related to durable goods.....	14	3.637	224.2	227.3	15.4	2.5	4.4	-0.8	1.4
Finished metals related to durable goods.....	15	1.785	156.0	156.3	8.3	0.7	1.8	0.7	0.2
Nonmetals related to durable goods.....	16	1.689	110.3	110.2	2.5	0.1	-0.1	0.4	-0.1
<b>Capital goods</b> .....	2	27.292	89.2	89.2	0.6	0.1	0.0	0.0	0.0
Electric generating equipment.....	20	3.297	117.0	117.3	1.1	0.2	0.2	0.0	0.3
Nonelectrical machinery.....	21	21.453	81.8	81.7	0.7	0.1	-0.1	0.1	-0.1
Transportation equipment excluding motor vehicles (Dec. 2001=100).....	22	2.541	134.7	134.9	-1.1	0.0	0.1	0.2	0.1
<b>Automotive vehicles, parts &amp; engines</b> .....	3	16.088	110.1	110.2	-0.5	0.1	0.1	-0.2	0.1
<b>Consumer goods, excluding automobiles</b> .....	4	27.084	106.7	106.8	0.2	0.1	-0.1	-0.2	0.1
Nondurables, manufactured.....	40	13.300	121.3	121.4	1.4	0.0	0.0	-0.2	0.1
Durables, manufactured.....	41	12.484	93.0	93.0	-0.7	0.2	-0.2	-0.1	0.0
Nonmanufactured consumer goods.....	42	1.300	114.9	114.6	-3.2	-0.4	0.2	0.3	-0.3

<sup>1</sup> Relative importance figures are based on 2015 trade values.

NOTES: Data may be revised in each of the 3 months after original publication.

Dash = Not available

**Table 2. U.S. export price indexes and percent changes for selected categories of goods: November 2016 to November 2017**

[2000=100, unless otherwise noted]

Description	End Use	Relative importance Oct. 2017 <sup>1</sup>	Index		Percent change				
			Oct. 2017	Nov. 2017	Annual	Monthly			
					Nov. 2016 to Nov. 2017	July 2017 to Aug. 2017	Aug. 2017 to Sept. 2017	Sept. 2017 to Oct. 2017	Oct. 2017 to Nov. 2017
<b>All commodities.....</b>		100.000	124.0	124.6	3.1	0.6	0.8	0.1	0.5
<b>Agricultural commodities.....</b>		9.430	180.2	179.1	2.1	0.0	-0.7	1.9	-0.6
<b>All exports excluding food and fuels (Dec. 2010=100).....</b>		82.894	99.8	99.9	1.6	0.3	0.4	0.2	0.1
<b>Nonagricultural commodities.....</b>		90.570	119.7	120.4	3.2	0.7	0.9	-0.1	0.6
<b>Foods, feeds, &amp; beverages.....</b>	0	8.811	183.1	181.2	2.2	0.1	-0.6	2.1	-1.0
Agricultural foods, feeds & beverages, excluding distilled beverages.....	00	8.181	182.1	180.2	2.0	0.0	-0.7	2.2	-1.0
Nonagricultural foods (fish, distilled beverages).....	01	0.630	205.3	203.9	6.0	0.5	0.5	1.7	-0.7
<b>Industrial supplies &amp; materials.....</b>	1	30.247	151.5	154.7	8.0	1.8	2.8	-1.0	2.1
Industrial supplies & materials, durable....		10.741	162.1	162.4	4.7	1.3	2.5	-0.3	0.2
Industrial supplies & materials, nondurable.....		19.527	146.8	151.4	9.9	2.0	2.8	-1.3	3.1
Agricultural industrial supplies & materials.....	10	1.249	174.0	177.8	3.1	-0.2	-0.3	-0.1	2.2
<b>Nonagricultural industrial supplies &amp; materials.....</b>		28.998	150.9	154.0	8.3	1.9	2.9	-1.0	2.1
Fuels & lubricants.....	11	8.316	176.4	185.7	21.2	5.0	6.1	-3.0	5.3
Nonagricultural supplies & materials excluding fuels & building materials.....	12	19.631	153.8	155.1	3.6	0.7	1.6	-0.3	0.8
Selected building materials.....	13	1.051	123.6	123.8	5.8	0.9	0.5	1.7	0.2
<b>Capital goods.....</b>	2	38.037	108.5	108.4	1.6	0.1	0.0	0.5	-0.1
Electrical generating equipment.....	20	4.003	115.5	115.4	3.2	0.2	0.1	2.0	-0.1
Nonelectrical machinery.....	21	24.832	94.3	94.2	0.5	0.1	0.0	0.3	-0.1
Transportation equipment excluding motor vehicles (Dec. 2001=100).....	22	9.201	171.5	171.6	4.1	0.1	0.1	0.2	0.1
<b>Automotive vehicles, parts &amp; engines.....</b>	3	10.205	113.4	113.3	0.4	0.2	0.0	0.0	-0.1
<b>Consumer goods, excluding automotives.....</b>	4	12.700	109.1	109.1	-0.7	0.3	0.0	-0.1	0.0
Nondurables, manufactured.....	40	6.162	105.2	105.2	-0.8	0.2	0.1	-0.1	0.0
Durables, manufactured.....	41	5.154	107.6	107.5	0.2	0.3	0.0	-0.2	-0.1

<sup>1</sup> Relative importance figures are based on 2015 trade values.

NOTES: Data may be revised in each of the 3 months after original publication.

Dash = Not available

**Table 3. U.S. import price indexes and percent changes for selected industries: November 2016 to November 2017**

[December 2005=100, unless otherwise noted]

Description	NAICS	Relative importance Oct. 2017 <sup>1</sup>	Index		Percent change				
			Oct. 2017	Nov. 2017	Annual Nov. 2016 to Nov. 2017	Monthly			
						July 2017 to Aug. 2017	Aug. 2017 to Sept. 2017	Sept. 2017 to Oct. 2017	Oct. 2017 to Nov. 2017
<b>Nonmanufacturing.....</b>		9.093	101.2	105.3	17.9	2.5	4.7	1.7	4.1
<b>Agriculture, forestry, fishing and hunting.....</b>	11	2.133	193.3	186.2	-1.2	0.6	4.9	-1.5	-3.7
Crop production.....	111	1.746	211.7	201.7	-2.7	0.5	6.5	-1.2	-4.7
Animal production (Dec. 2014=100).....	112	0.189	73.2	74.7	4.6	-0.1	-6.6	-3.0	2.0
<b>Mining.....</b>	21	6.961	90.4	96.2	24.5	3.1	4.8	2.7	6.4
Oil and gas extraction.....	211	6.677	89.9	96.0	24.8	3.3	4.9	2.7	6.8
Mining (except oil and gas) (Dec. 2006=100).....	212	0.283	112.9	110.9	15.9	-1.3	-1.0	1.7	-1.8
<b>Manufacturing.....</b>		90.614	110.5	111.0	1.8	0.4	0.5	-0.2	0.5
<b>Manufacturing, part 1.....</b>	31	11.856	124.5	124.2	0.2	0.1	0.1	-0.1	-0.2
Food manufacturing.....	311	3.477	156.6	155.8	1.0	0.0	0.0	-0.1	-0.5
Beverage and tobacco product manufacturing.....	312	1.061	119.5	119.4	1.2	-0.1	0.3	0.2	-0.1
Textile mills (Dec. 2011=100).....	313	0.400	99.5	99.4	1.5	0.6	0.5	0.1	-0.1
Textile product mills.....	314	0.930	109.3	109.1	0.1	0.0	0.3	0.0	-0.2
Apparel manufacturing.....	315	4.162	110.9	110.7	-0.4	0.1	0.1	-0.3	-0.2
Leather and allied product manufacturing.....	316	1.825	122.6	122.6	-0.3	0.0	-0.2	0.0	0.0
<b>Manufacturing, part 2.....</b>	32	17.565	121.6	123.8	5.9	0.8	1.2	-0.2	1.8
Wood product manufacturing.....	321	0.948	135.3	136.8	19.2	3.0	-0.8	3.0	1.1
Paper manufacturing.....	322	1.024	105.8	106.0	2.1	-0.1	-0.1	0.5	0.2
Printing and related support activities (Dec. 2016=100).....	323	0.218	99.0	98.9	-	-1.3	0.2	0.1	-0.1
Petroleum and coal products manufacturing.....	324	2.276	84.3	93.5	16.4	6.5	8.4	-6.4	10.9
Chemical manufacturing.....	325	9.875	136.2	137.1	4.8	-0.1	0.1	0.8	0.7
Plastics and rubber products manufacturing.....	326	2.223	118.3	118.2	0.8	0.2	-0.1	-0.1	-0.1
Nonmetallic mineral product manufacturing.....	327	1.002	128.8	128.8	-0.3	0.2	0.0	0.4	0.0
<b>Manufacturing, part 3.....</b>	33	61.192	104.1	104.2	1.0	0.3	0.2	0.0	0.1
Primary metal manufacturing.....	331	4.350	148.6	150.5	15.3	1.7	3.8	-0.3	1.3
Fabricated metal product manufacturing.....	332	3.146	125.7	125.7	3.5	0.5	0.8	0.7	0.0
Machinery manufacturing.....	333	7.103	117.7	117.6	1.1	0.7	0.3	-0.1	-0.1
Computer and electronic product manufacturing.....	334	17.379	75.6	75.5	-0.4	0.0	-0.5	0.0	-0.1
Electrical equipment, appliance, and component manufacturing.....	335	4.890	115.1	115.6	0.7	0.2	0.1	-0.1	0.4
Transportation equipment manufacturing.....	336	17.322	109.2	109.3	-0.5	0.0	0.1	-0.1	0.1
Furniture and related product manufacturing.....	337	1.724	115.8	115.8	1.0	0.2	0.1	0.1	0.0
Miscellaneous manufacturing.....	339	5.279	117.6	117.8	-1.1	0.2	0.2	-0.3	0.2

<sup>1</sup> Relative importance figures are based on 2015 trade values.

NOTES: Data may be revised in each of the 3 months after original publication.

Dash = Not available

**Table 4. U.S. export price indexes and percent changes for selected industries: November 2016 to November 2017**

[December 2005=100, unless otherwise noted]

Description	NAICS	Relative importance Oct. 2017 <sup>1</sup>	Index		Percent change				
			Oct. 2017	Nov. 2017	Annual Nov. 2016 to Nov. 2017	Monthly			
						July 2017 to Aug. 2017	Aug. 2017 to Sept. 2017	Sept. 2017 to Oct. 2017	Oct. 2017 to Nov. 2017
<b>Nonmanufacturing.....</b>		7.585	137.5	137.6	12.6	-1.6	0.7	3.2	0.1
<b>Agriculture, forestry, fishing and hunting.....</b>	11	4.591	156.6	154.2	1.1	-0.7	-0.9	3.8	-1.5
Crop production.....	111	4.230	162.7	159.8	0.6	-0.8	-1.0	4.0	-1.8
<b>Mining.....</b>	21	2.994	87.8	90.0	35.3	-2.9	3.1	2.2	2.5
Mining (except oil and gas).....	212	1.281	107.6	108.5	23.0	1.3	3.0	0.7	0.8
<b>Manufacturing.....</b>		90.911	113.8	114.3	2.5	0.7	0.8	-0.1	0.4
<b>Manufacturing, part 1.....</b>	31	7.053	139.1	139.1	3.0	0.4	-0.4	0.1	0.0
Food manufacturing.....	311	4.757	158.1	157.6	3.3	0.6	-0.5	0.1	-0.3
Beverage and tobacco product manufacturing.....	312	0.714	114.7	117.5	8.3	0.1	0.8	-0.3	2.4
Textile mills (Dec. 2016=100).....	313	0.663	101.2	101.2	–	-0.1	0.3	0.1	0.0
Leather and allied product manufacturing (Dec. 2016=100).....	316	0.271	95.6	95.8	–	-1.6	-0.5	-0.7	0.2
<b>Manufacturing, part 2.....</b>	32	24.300	110.6	112.5	5.4	2.2	2.4	-0.7	1.7
Paper manufacturing.....	322	1.698	123.8	124.9	5.9	0.2	0.6	1.9	0.9
Petroleum and coal products manufacturing.....	324	5.520	101.1	107.9	19.1	9.5	8.2	-5.0	6.7
Chemical manufacturing.....	325	13.194	115.3	115.5	1.2	0.2	0.8	0.6	0.2
Plastics and rubber products manufacturing.....	326	2.270	114.5	114.2	0.4	0.4	0.2	0.0	-0.3
Nonmetallic mineral product manufacturing.....	327	0.843	114.8	114.7	1.8	0.1	0.6	0.4	-0.1
<b>Manufacturing, part 3.....</b>	33	59.558	112.6	112.5	1.3	0.3	0.2	0.2	-0.1
Primary metal manufacturing.....	331	4.017	139.2	140.1	2.7	1.9	3.4	-2.1	0.6
Fabricated metal product manufacturing... ..	332	3.272	138.1	138.0	5.8	0.0	0.0	0.0	-0.1
Machinery manufacturing.....	333	10.130	125.7	125.4	-0.3	0.2	0.0	-0.2	-0.2
Computer and electronic product manufacturing.....	334	14.081	83.3	83.3	0.5	0.0	-0.1	0.7	0.0
Electrical equipment, appliance, and component manufacturing.....	335	4.019	115.8	115.4	3.0	0.2	0.0	1.8	-0.3
Transportation equipment manufacturing..	336	18.298	124.8	124.9	2.1	0.1	0.1	0.1	0.1
Furniture and related product manufacturing (Dec. 2011=100).....	337	0.449	117.6	117.5	-0.4	0.0	0.1	0.1	-0.1
Miscellaneous manufacturing.....	339	5.291	119.3	119.1	-0.6	0.3	0.2	-0.1	-0.2

<sup>1</sup> Relative importance figures are based on 2015 trade values.

NOTES: Data may be revised in each of the 3 months after original publication.

Dash = Not available



**Table 5. U.S. import price indexes and percent changes for selected categories of goods: November 2016 to November 2017**

[2000=100, unless otherwise noted]

Description	Harmoni- zied system	Relative importance Oct. 2017 <sup>1</sup>	Index		Percent change				
			Oct. 2017	Nov. 2017	Annual	Monthly			
					Nov. 2016 to Nov. 2017	July 2017 to Aug. 2017	Aug. 2017 to Sept. 2017	Sept. 2017 to Oct. 2017	Oct. 2017 to Nov. 2017
<b>Live animals; animal products.....</b>	I	1.467	191.4	191.0	1.2	-1.0	-1.5	-0.1	-0.2
Meat and edible meat offal.....	02	0.447	248.4	246.2	3.7	-2.5	0.2	0.8	-0.9
Fish and crustaceans, molluscs and other aquatic invertebrates.....	03	0.727	140.1	137.5	-5.4	-1.0	-0.7	0.6	-1.9
<b>Vegetable products.....</b>	II	2.200	233.1	223.5	-2.4	0.7	6.1	-0.9	-4.1
Edible vegetables, roots, and tubers.....	07	0.408	454.1	492.1	-0.7	-1.9	3.0	-3.1	8.4
Edible fruit and nuts; peel of citrus fruit or melons.....	08	1.046	151.5	133.9	-2.5	2.1	13.5	-0.3	-11.6
Coffee, tea, mate and spices.....	09	0.358	224.8	222.0	-9.4	0.3	-1.7	-2.0	-1.2
<b>Animal or vegetable fats and oils (Dec. 2009=100).....</b>	III	0.303	117.2	117.2	3.0	1.0	1.7	-1.0	0.0
<b>Prepared foodstuffs, beverages, and tobacco.....</b>	IV	2.690	161.9	161.5	0.8	0.4	0.1	-0.3	-0.2
Sugars and sugar confectionary (Dec. 2012=100).....	17	0.185	87.2	86.6	-1.6	-0.8	0.1	1.3	-0.7
Cocoa and cocoa preparations (Dec. 2009=100).....	18	0.191	95.0	94.5	-11.3	0.7	-0.5	0.0	-0.5
Preparations of vegetables, fruit, nuts, or other parts of plants.....	20	0.365	171.2	171.8	6.9	0.4	0.9	0.6	0.4
Beverages, spirits, and vinegar.....	22	1.002	129.2	129.0	0.9	-0.1	0.3	0.2	-0.2
<b>Mineral products.....</b>	V	9.359	181.4	194.8	22.3	3.9	5.5	0.3	7.4
Mineral fuels, oils and residuals, bituminous substances and mineral waxes.....	27	9.090	178.7	192.5	22.5	4.1	5.7	0.2	7.7
<b>Products of the chemical or allied industries.....</b>	VI	9.286	152.4	153.7	4.9	-0.1	0.0	0.7	0.9
Inorganic chemicals.....	28	0.537	272.5	283.2	13.9	-2.2	-3.9	4.6	3.9
Organic chemicals.....	29	2.408	125.7	128.0	6.8	0.2	1.1	0.8	1.8
Pharmaceutical products.....	30	4.282	148.0	148.1	3.9	0.0	-0.2	-0.2	0.1
Fertilizers (Dec. 2009=100).....	31	0.275	78.7	81.0	9.2	-3.2	1.3	10.8	2.9
Tanning extracts; dye, pigments, varnish, paints & putty (Dec. 2011=100).....	32	0.189	106.3	106.1	3.7	-0.1	-2.0	-0.4	-0.2
Essential oils and resinoids (Dec. 2016=100).....	33	0.556	102.8	102.8	-	0.7	1.0	0.4	0.0
Miscellaneous chemical products.....	38	0.687	105.2	105.3	3.0	0.1	0.1	0.1	0.1
<b>Plastics and articles thereof; rubber and articles thereof.....</b>	VII	3.441	140.6	140.4	2.3	0.4	0.3	0.3	-0.1
Plastics and articles thereof.....	39	2.193	143.0	143.2	2.4	0.2	0.2	0.6	0.1
Rubber and articles thereof.....	40	1.247	137.7	136.8	1.9	0.7	0.4	-0.2	-0.7
<b>Raw hides, skins, leather, furskins, travel goods, etc.....</b>	VIII	0.683	124.1	124.1	0.6	0.0	0.3	0.0	0.0
Articles of leather; travel goods, bags, etc. of various materials.....	42	0.653	129.5	129.4	0.5	0.0	0.3	0.1	-0.1
<b>Wood, wood charcoal, cork, straw, basketware and wickerwork.....</b>	IX	0.984	164.7	166.3	19.0	2.8	-0.7	2.9	1.0
Wood and articles of wood; wood charcoal (Dec. 2014=100).....	44	0.960	113.7	114.8	19.5	2.9	-0.6	3.0	1.0
<b>Woodpulp, recovered paper, and paper products.....</b>	X	1.085	110.9	111.2	2.2	-0.5	0.0	0.5	0.3
Paper and paperboard; articles of paper pulp, paper or paperboard.....	48	0.714	103.0	103.0	-0.6	0.1	-0.1	0.1	0.0
Printed matter (Dec. 2015=100).....	49	0.216	104.9	104.9	0.9	-1.5	0.2	0.2	0.0
<b>Textile and textile articles.....</b>	XI	5.312	113.3	113.1	-0.1	0.2	0.1	-0.2	-0.2

See footnotes at end of table.

**Table 5. U.S. import price indexes and percent changes for selected categories of goods: November 2016 to November 2017 — Continued**  
 [2000=100, unless otherwise noted]

Description	Harmoni- zied system	Relative importance Oct. 2017 <sup>1</sup>	Index		Percent change				
			Oct. 2017	Nov. 2017	Annual Nov. 2016 to Nov. 2017	Monthly			
						July 2017 to Aug. 2017	Aug. 2017 to Sept. 2017	Sept. 2017 to Oct. 2017	Oct. 2017 to Nov. 2017
Articles of apparel and clothing accessories, knitted or crocheted.....	61	2.195	103.6	103.4	-0.3	0.2	0.0	-0.3	-0.2
Articles of apparel and clothing accessories, not knitted or crocheted.....	62	1.827	118.7	118.4	-0.7	0.0	0.1	-0.3	-0.3
Made-up or worn textile articles.....	63	0.653	103.9	103.8	0.3	0.0	0.2	0.0	-0.1
<b>Headgear, umbrellas, artificial flowers, etc.....</b>	XII	1.501	121.6	121.7	-0.5	-0.1	-0.1	-0.1	0.1
Footwear and parts of such articles.....	64	1.271	120.8	120.7	-0.7	0.1	-0.2	0.0	-0.1
<b>Stone, plaster, cement, asbestos, ceramics, glass etc.....</b>	XIII	0.940	131.0	130.8	0.0	0.4	0.2	0.3	-0.2
Articles of stone, plaster, cement, asbestos, or mica (Dec. 2015=100).....	68	0.326	97.2	97.3	-0.4	0.0	0.1	0.5	0.1
Ceramic products.....	69	0.269	136.4	136.2	-0.7	0.4	0.2	0.4	-0.1
Glass and glassware.....	70	0.346	131.5	131.1	1.1	0.6	0.3	0.2	-0.3
<b>Pearls, stones, precious metals, imitation jewelry, and coins.....</b>	XIV	2.801	170.6	172.0	-0.5	2.0	2.5	-2.5	0.8
<b>Base metals and articles of base metals. ...</b>	XV	5.722	173.8	174.8	11.9	0.7	2.3	0.8	0.6
Iron and steel.....	72	1.395	204.0	203.7	21.4	1.1	1.7	1.7	-0.1
Articles of iron or steel.....	73	1.724	147.7	147.7	7.6	-0.8	1.4	1.0	0.0
Copper and articles thereof.....	74	0.410	292.0	301.2	21.2	5.1	5.3	-2.9	3.2
Aluminum and articles thereof.....	76	0.846	136.3	137.5	13.3	0.1	2.9	2.6	0.9
Tools, implements, cutlery, spoons and forks, of base metal; parts thereof.....	82	0.428	122.0	122.0	0.0	0.4	0.0	-0.8	0.0
Miscellaneous articles of base metal.....	83	0.521	137.7	137.8	1.7	0.3	0.6	0.1	0.1
<b>Machinery, electrical equipment, TV image and sound recorders, parts, etc.....</b>	XVI	29.603	80.6	80.6	0.1	0.1	-0.1	0.0	0.0
Machinery and mechanical appliances; parts thereof.....	84	14.820	86.6	86.5	1.3	0.3	0.1	0.2	-0.1
Electrical machinery and equip, sound and TV recorders & reproducers, parts.....	85	14.783	75.0	75.1	-0.9	0.0	-0.5	-0.1	0.1
<b>Vehicles, aircraft, vessels and associated transport equipment.....</b>	XVII	14.447	113.7	113.7	-0.5	0.1	0.1	-0.2	0.0
Motor vehicles and their parts.....	87	12.997	112.7	112.7	-0.2	0.1	0.1	-0.2	0.0
Aircraft, spacecraft, and parts thereof (Dec. 2002=100).....	88	1.319	115.8	115.9	-2.5	-0.3	0.1	0.3	0.1
<b>Optical, photo, measuring, medical &amp; musical instruments; &amp; timepieces.....</b>	XVIII	3.843	102.0	101.8	-0.7	0.2	0.2	0.0	-0.2
Optical, photographic, measuring and medical instruments.....	90	3.515	98.6	98.4	-0.9	0.1	0.3	0.0	-0.2
Clocks and watches and parts thereof.....	91	0.268	143.9	143.9	1.5	0.0	0.0	0.0	0.0
<b>Miscellaneous manufactured articles.....</b>	XX	4.256	111.2	111.4	-0.3	0.1	0.0	0.1	0.2
Furniture & stuffed furnishings; lamps & lighting fittings, nesoi; prefab bldgs.....	94	2.637	116.9	117.3	0.8	0.2	0.1	0.0	0.3
Toys, games and sports equipment; parts and accessories thereof.....	95	1.346	101.3	101.3	-1.9	-0.1	0.0	0.0	0.0
Miscellaneous manufactured articles.....	96	0.273	129.8	129.8	-1.5	0.0	0.1	0.0	0.0

<sup>1</sup> Relative importance figures are based on 2015 trade values.

NOTES: Data may be revised in each of the 3 months after original publication.

Dash = Not available

**Table 6. U.S. export price indexes and percent changes for selected categories of goods: November 2016 to November 2017**

[2000=100, unless otherwise noted]

Description	Harmoni- zied system	Relative importance Oct. 2017 <sup>1</sup>	Index		Percent change				
			Oct. 2017	Nov. 2017	Annual	Monthly			
					Nov. 2016 to Nov. 2017	July 2017 to Aug. 2017	Aug. 2017 to Sept. 2017	Sept. 2017 to Oct. 2017	Oct. 2017 to Nov. 2017
<b>Live animals; animal products.....</b>	I	1.910	208.8	206.4	7.2	0.2	-1.8	0.1	-1.1
Meat & edible meat offal (Dec. 2006=100)...	02	1.123	166.5	164.5	11.4	0.2	-2.7	0.0	-1.2
Fish and crustaceans, mollusks and aquatic invertebrates (Dec. 2016=100).....	03	0.415	112.9	112.2	-	0.5	0.5	2.5	-0.6
<b>Vegetable products.....</b>	II	4.347	200.0	195.5	0.7	-0.6	-0.6	4.8	-2.3
Edible fruit and nuts; peel of citrus fruit or melons.....	08	0.851	144.7	148.3	-2.2	1.9	1.4	2.0	2.5
Cereals.....	10	1.206	178.8	180.0	5.3	-5.2	-3.8	2.7	0.7
Oilseeds and misc. grains, seeds, fruits, plants, straw and fodder.....	12	1.624	199.0	199.5	-0.2	1.2	-0.3	-0.4	0.3
<b>Prepared foodstuffs, beverages, and tobacco.....</b>	IV	3.064	149.4	149.7	1.1	0.3	0.3	-0.1	0.2
Preparations of vegetables, fruit, nuts or other parts of plants (Dec. 2009=100)....	20	0.380	117.6	117.5	0.7	-0.1	-0.4	0.9	-0.1
Beverages, spirits, and vinegar (Dec. 2008=100).....	22	0.547	112.4	110.1	-1.7	0.6	0.4	-0.1	-2.0
Residues and waste from the food industries; prepared animal feed.....	23	0.703	194.5	201.4	0.0	-0.9	1.5	0.3	3.5
<b>Mineral products.....</b>	V	8.747	211.8	223.1	24.3	4.7	6.3	-2.4	5.3
Ores, slag and ash (Dec. 2012=100).....	26	0.607	103.7	105.9	23.4	3.1	6.9	1.8	2.1
Mineral fuels, oils and residuals, bituminous substances and mineral waxes.....	27	7.948	202.3	213.9	25.0	4.9	6.4	-2.8	5.7
<b>Products of the chemical or allied industries.....</b>	VI	10.768	135.4	135.4	-0.4	0.4	0.2	0.4	0.0
Inorganic chemicals.....	28	0.748	158.1	158.7	-9.7	1.1	-3.4	0.6	0.4
Organic chemicals.....	29	2.608	137.1	138.0	2.8	1.1	2.0	1.0	0.7
Pharmaceutical products.....	30	3.152	105.4	104.8	-3.1	0.4	0.1	0.0	-0.6
Fertilizers (Dec. 2016=100).....	31	0.239	104.4	106.2	-	-1.0	-1.4	-0.1	1.7
Tanning or dyeing extracts, dyes, paints varnish, putty, & inks (Dec. 2015=100)....	32	0.539	102.4	102.2	4.9	-1.7	1.1	3.0	-0.2
Essential oils and resinoids; perfumery cosmetic or toilet preparations.....	33	0.805	132.1	132.6	1.1	-0.2	0.2	-0.3	0.4
Soap; lubricants; waxes, polishing or scouring products; candles, pastes.....	34	0.552	125.8	126.4	8.8	0.1	-0.7	-2.4	0.5
Miscellaneous chemical products.....	38	1.737	144.7	144.4	-1.2	0.1	0.0	0.3	-0.2
<b>Plastics and articles thereof; rubber and articles thereof.....</b>	VII	5.114	139.7	139.8	2.0	-0.1	1.0	1.3	0.1
Plastics and articles thereof.....	39	4.173	135.7	136.4	2.9	0.1	1.1	1.2	0.5
Rubber and articles thereof.....	40	0.941	156.0	153.4	-1.9	-0.7	0.6	1.5	-1.7
<b>Raw hides, skins, leather, furskins, travel goods, etc.....</b>	VIII	0.321	114.7	114.9	-5.1	-2.3	-0.7	-1.4	0.2
<b>Wood, wood charcoal, cork, straw, baskets and wickerwork (Dec. 2014=100).....</b>	IX	0.661	103.7	104.4	11.1	0.8	1.6	2.9	0.7
<b>Woodpulp, recovered paper, and paper products.....</b>	X	2.015	121.1	128.6	4.6	-0.8	-2.6	-3.9	6.2
Woodpulp and recovered paper.....	47	0.553	112.9	136.0	4.0	-2.5	-7.9	-15.6	20.5
Paper and paperboard; articles of paper pulp, paper or paperboard.....	48	1.114	124.4	124.4	5.0	-0.1	0.1	1.7	0.0
Printed material (Dec. 2014=100).....	49	0.348	101.5	105.1	4.5	0.0	0.0	0.0	3.5
<b>Textile and textile articles.....</b>	XI	1.711	119.5	119.8	0.3	0.3	-0.4	-0.1	0.3
Cotton, including yarns and woven fabrics thereof.....	52	0.437	123.1	125.4	2.4	0.9	-1.8	-1.5	1.9

See footnotes at end of table.

**Table 6. U.S. export price indexes and percent changes for selected categories of goods: November 2016 to November 2017 — Continued**  
 [2000=100, unless otherwise noted]

Description	Harmoni- zied system	Relative importance Oct. 2017 <sup>1</sup>	Index		Percent change				
			Oct. 2017	Nov. 2017	Annual Nov. 2016 to Nov. 2017	Monthly			
						July 2017 to Aug. 2017	Aug. 2017 to Sept. 2017	Sept. 2017 to Oct. 2017	Oct. 2017 to Nov. 2017
<b>Stone, plaster, cement, asbestos, ceramics, glass etc.....</b>	XIII	0.828	123.5	123.5	0.3	-0.1	0.3	0.2	0.0
Articles of stone, plaster, cement, asbestos, or mica (Dec. 2015=100).....	68	0.275	101.4	101.3	0.0	0.2	0.0	0.1	-0.1
Glass and glassware.....	70	0.421	99.1	99.0	-0.8	-0.2	0.4	0.4	-0.1
<b>Pearls, stones, precious metals, imitation jewelry, and coins.....</b>	XIV	4.192	234.6	235.4	-0.2	1.7	2.9	-2.5	0.3
<b>Base metals and articles of base metals. ...</b>	XV	5.046	157.3	157.1	8.6	1.2	2.3	0.2	-0.1
Iron and steel.....	72	1.101	168.8	162.6	12.4	3.0	5.4	0.0	-3.7
Copper and articles thereof.....	74	0.531	190.7	195.3	24.6	4.3	5.2	1.0	2.4
Aluminum and articles thereof.....	76	0.861	115.9	119.0	11.9	1.3	3.7	0.1	2.7
Tools, implements, cutlery, spoons and forks, of base metal (Dec. 2015=100). ....	82	0.344	99.5	99.5	-0.5	0.0	0.0	0.0	0.0
Miscellaneous articles of base metal.....	83	0.342	148.2	148.2	0.3	0.0	0.1	0.0	0.0
<b>Machinery, electrical equipment, TV image and sound recorders, parts, etc.....</b>	XVI	28.542	96.7	96.6	1.4	0.1	-0.1	0.4	-0.1
Machinery and mechanical appliances; parts thereof.....	84	16.696	113.9	113.8	1.4	0.1	-0.2	0.1	-0.1
Electrical machinery and equipment and parts and accessories thereof.....	85	11.846	78.2	78.1	1.4	0.1	-0.1	1.2	-0.1
<b>Vehicles, aircraft, vessels and associated transport equipment.....</b>	XVII	14.847	133.2	133.3	1.2	0.2	0.2	0.0	0.1
Motor vehicles and their parts.....	87	8.590	115.3	115.3	0.5	0.1	0.1	-0.1	0.0
<b>Optical, photo, measuring, medical &amp; musical instruments; &amp; timepieces.....</b>	XVIII	6.008	107.2	107.0	0.8	0.3	0.1	0.4	-0.2
<b>Miscellaneous manufactured articles.....</b>	XX	1.464	112.2	110.8	-1.5	0.0	-0.1	0.0	-1.2
Furniture; stuffed furnishings; lamps and lighting fittings nesoi;.....	94	0.886	128.2	125.7	-2.3	-0.1	0.0	0.0	-2.0
Toys, games and sports equipment; parts and accessories thereof.....	95	0.429	88.8	88.8	-0.6	0.0	0.0	0.1	0.0

<sup>1</sup> Relative importance figures are based on 2015 trade values.

NOTES: Data may be revised in each of the 3 months after original publication.

Dash = Not available

**Table 7. U.S. import price indexes and percent changes by locality of origin: November 2016 to November 2017**  
 [2000=100, unless otherwise noted]

Description	Relative importance Oct. 2017 <sup>1</sup>	Index		Percent change				
		Oct. 2017	Nov. 2017	Annual	Monthly			
				Nov. 2016 to Nov. 2017	July 2017 to Aug. 2017	Aug. 2017 to Sept. 2017	Sept. 2017 to Oct. 2017	Oct. 2017 to Nov. 2017
<b>Industrialized Countries<sup>2</sup></b> .....	100.000	120.5	121.5	3.4	0.7	0.7	0.0	0.8
Nonmanufacturing.....	8.636	138.9	147.1	19.5	2.2	2.4	0.9	5.9
Manufacturing.....	90.888	118.5	118.9	2.0	0.5	0.5	-0.1	0.3
<b>Other Countries<sup>3</sup></b> .....	100.000	120.3	121.5	2.9	0.4	0.8	-0.1	1.0
Nonmanufacturing.....	9.401	209.6	215.9	19.4	2.4	6.3	0.7	3.0
Manufacturing.....	90.393	103.1	103.9	1.4	0.3	0.2	-0.2	0.8
<b>Canada</b> .....	100.000	126.9	129.7	8.3	1.1	1.0	0.9	2.2
Nonmanufacturing.....	23.662	132.1	140.3	19.2	2.3	2.0	0.8	6.2
Manufacturing.....	75.543	129.4	130.7	5.1	0.6	0.7	0.9	1.0
<b>European Union<sup>4</sup></b> .....	100.000	133.9	134.1	1.7	0.8	0.3	-0.1	0.1
Manufacturing.....	99.364	130.5	130.8	1.9	0.7	0.3	-0.1	0.2
<b>France (Dec. 2003=100)</b> .....	100.000	125.8	125.9	3.2	1.6	0.4	0.3	0.1
<b>Germany (Dec. 2003=100)</b> .....	100.000	115.4	115.2	2.8	0.4	0.2	0.3	-0.2
<b>United Kingdom (Dec. 2003=100)</b> .....	100.000	118.6	118.6	0.9	0.3	0.3	0.3	0.0
<b>Latin America<sup>5</sup></b> .....	100.000	146.8	147.9	6.3	0.6	1.5	0.5	0.7
Nonmanufacturing.....	19.181	242.5	246.6	19.8	2.8	7.9	-0.9	1.7
Manufacturing.....	80.481	121.5	122.1	3.6	0.2	0.1	0.8	0.5
<b>Mexico (Dec. 2003=100)</b> .....	100.000	128.8	128.7	3.4	0.5	1.4	-0.2	-0.1
Nonmanufacturing (Dec. 2008=100).....	9.640	136.6	131.5	10.9	3.2	14.1	-6.4	-3.7
Manufacturing (Dec. 2008=100).....	90.056	88.7	89.0	2.8	0.1	0.2	0.5	0.3
<b>Pacific Rim (Dec. 2003=100)<sup>6</sup></b> .....	100.000	98.3	98.4	0.0	0.0	-0.1	-0.1	0.1
<b>China (Dec. 2003=100)</b> .....	100.000	99.8	100.1	-0.1	0.0	-0.3	0.0	0.3
<b>Japan</b> .....	100.000	95.5	95.4	-1.2	-0.4	0.1	-0.3	-0.1
<b>Asian NICs<sup>7</sup></b> .....	100.000	87.6	87.5	3.8	0.2	0.7	0.3	-0.1
<b>ASEAN (Dec. 2003=100)<sup>8</sup></b> .....	100.000	98.1	98.0	0.9	0.1	0.2	0.0	-0.1
<b>Asia Near East (Dec. 2003=100)<sup>9</sup></b> .....	100.000	162.3	167.8	12.4	0.4	3.4	5.7	3.4

<sup>1</sup> Relative importance figures are based on 2015 trade values.

<sup>2</sup> Western Europe, Canada, Japan, Australia, New Zealand, and South Africa.

<sup>3</sup> Eastern Europe, Latin America, OPEC countries, and other countries in Asia, Africa, and the Western Hemisphere.

<sup>4</sup> European Union countries.

<sup>5</sup> Mexico, Central America, South America, and the Caribbean.

<sup>6</sup> China, Japan, Australia, Brunei, Indonesia, Macao, Malaysia, New Zealand, Papua New Guinea, Philippines, and the Asian Newly Industrialized Countries.

<sup>7</sup> Asian Newly Industrialized Countries - Hong Kong, Singapore, South Korea, and Taiwan.

<sup>8</sup> Association of Southeast Asian Nations - Brunei, Cambodia, Indonesia, Laos, Malaysia, Myanmar, Philippines, Singapore, Thailand, and Vietnam.

<sup>9</sup> Bahrain, Iran, Iraq, Israel, Jordan, Kuwait, Lebanon, Oman, Qatar, Saudi Arabia, Syria, United Arab Emirates, and Yemen.

NOTES: Data may be revised in each of the 3 months after original publication.

Regions are not mutually exclusive.

Dash = Not available

**Table 8. U.S. international price indexes and percent changes for selected transportation services: November 2016 to November 2017**

[2000=100, unless otherwise noted]

Description	Relative importance Oct. 2017 <sup>1</sup>	Index		Percent change				
		Oct. 2017	Nov. 2017	Annual Nov. 2016 to Nov. 2017	Monthly			
					July 2017 to Aug. 2017	Aug. 2017 to Sept. 2017	Sept. 2017 to Oct. 2017	Oct. 2017 to Nov. 2017
<b>Air Freight</b>								
<b>Import Air Freight</b> .....	100.000	175.5	187.6	13.0	0.2	0.4	-4.0	6.9
Europe (Dec. 2003=100).....	24.336	145.1	145.9	5.0	1.0	2.1	-1.8	0.6
Asia.....	63.756	165.9	183.3	18.9	-0.2	0.0	-5.5	10.5
<b>Export Air Freight</b> .....	100.000	166.9	169.9	9.9	-0.3	0.5	5.4	1.8
Europe (Dec. 2006=100).....	31.891	150.1	150.1	3.2	0.0	0.7	1.5	0.0
<b>Inbound Air Freight</b> .....	100.000	162.2	171.1	10.2	0.4	0.5	-2.5	5.5
Europe (Dec. 2003=100).....	25.263	130.4	128.3	-3.8	0.6	1.6	-4.5	-1.6
Asia.....	61.941	155.7	170.5	18.1	0.4	0.1	-2.3	9.5
<b>Outbound Air Freight</b> .....	100.000	140.4	142.4	4.4	-1.5	-1.4	1.0	1.4
Europe (Dec. 2003=100).....	30.259	143.8	147.5	2.9	0.0	-1.5	0.0	2.6
Asia.....	46.213	134.0	136.8	6.4	-3.1	-2.4	0.2	2.1
<b>Air Passenger Fares</b>								
<b>Import Air Passenger Fares</b> .....	100.000	186.4	182.2	-0.9	-10.6	8.5	8.8	-2.3
Europe.....	41.979	212.2	218.9	0.4	-12.4	18.8	9.9	3.2
Asia.....	21.124	135.5	129.2	3.6	-8.4	4.4	0.3	-4.6
Latin America/Caribbean.....	9.113	155.1	162.4	0.4	-2.5	-5.7	1.6	4.7
<b>Export Air Passenger Fares</b> .....	100.000	153.0	153.6	-1.7	-2.1	-8.2	3.6	0.4
Europe.....	32.889	212.6	214.7	5.3	-14.1	13.6	3.1	1.0
Asia.....	23.200	116.0	119.3	-11.4	16.4	-20.5	-2.4	2.8
Latin America/Caribbean.....	23.981	160.0	164.7	1.1	-1.5	-3.6	-1.7	2.9

<sup>1</sup> Relative importance figures are based on 2015 trade values.

NOTES: Data may be revised in each of the 3 months after original publication.

Dash = Not available

## TECHNICAL NOTE

**Import and Export Merchandise and Services Price Indexes** - All indexes use a modified Laspeyres formula and are not seasonally adjusted. Price indexes are reweighted annually, with a 2-year lag in the weights. Published series use a base year of 2000=100 where possible. More detailed index series and additional information may be obtained at [www.bls.gov/mxp](http://www.bls.gov/mxp) or by calling (202) 691-7101.

**Merchandise Goods Classification Systems** - The merchandise price indexes are published using three classification systems. Items are classified by end use according to the Bureau of Economic Analysis Classification System, by industry according to the North American Industry Classification System (NAICS), and by product category according to the Harmonized System (HS). While classification by end use and product category are self-explanatory, some notes are in order for classifying items by industry. In the NAICS imports and exports tables, items are classified by output industry, not input industry. As an example, NAICS import index 326 (plastics and rubber products manufacturing) include outputs such as manufactured plastic rather than inputs such as petroleum. The NAICS classification structure also matches the classification system used by the Producer Price Index (PPI) to produce the NAICS primary products indexes.

**Import Price Indexes** - Products have been classified by the Harmonized Tariff Schedule of the United States Annotated (TSUSA). Import prices are based on U.S. dollar prices paid by the U.S. importer. The prices are generally either "free on board" (f.o.b.) foreign port or "cost, insurance, and freight" (c.i.f.) U.S. port transaction prices, depending on the practices of the individual industry. The index for crude petroleum is calculated from data collected by the U.S. Department of Energy.

**Export Price Indexes** - Products have been classified by the Harmonized Schedule B classification system of the U.S. Bureau of the Census. The prices used are generally either "free alongside ship" (f.a.s.) factory or "free on board" (f.o.b.) transaction prices, depending on the practices of the individual industry. Prices used in the grain index, excluding rice, are obtained from the U.S. Department of Agriculture.

**Services Price Indexes** - Starting in September 2008, the import air passenger fares indexes represent changes in the average revenue per passenger received by foreign carriers from U.S. residents and are calculated from data obtained from an airline consulting service. These data include tickets sold by travel agencies and travel websites. Tickets sold directly by the airlines are excluded, as are frequent flyer tickets generally. Starting in January 2008, the export air passenger fares indexes represent changes in the average revenue per passenger received by U.S. carriers from foreign residents and are calculated from data collected directly from airlines. These data include frequent flyer tickets and those sold by consolidators. Taxes and fees are included in the import air passenger fares indexes and excluded from the export air passenger fares indexes. The air freight indexes are calculated from data collected directly from airlines. These data exclude mail and passenger baggage. The scope of the service being priced is the movement of freight from airport to airport only, and does not include any ground transportation or port service. The air freight indexes are presented using two definitions: balance of payments (which represent transactions between U.S. and foreign residents) and international (which represent transactions inbound to and outbound from the U.S.). Fact sheets specifying detailed information for each services industry are available at [www.bls.gov/mxp](http://www.bls.gov/mxp) under "MXP Publications."

**Import Indexes by Locality of Origin** - Prices used in these indexes are a subset of the data collected for the import price indexes. Beginning with January 2002, the indexes are defined by locality of origin using a nomenclature based upon the North American Industry Classification System (NAICS). Nonmanufactured goods are defined as NAICS 11 and 21, and manufactured goods are defined as NAICS 31-33.

**Relative Importance** - A relative importance is a specific index's price-updated value share (expressed as a percentage) of overall imports or exports at a specific point in time. Relative importance values are affected by the trade weights at the point indexes are reweighted and index changes relative to other indexes since the reweight point. If an index is rising in value relative to other indexes over time, the relative importance will increase as well.

**Revision Policy** - To reflect the availability of late reports and corrections by respondents, monthly data may be revised in each of the 3 months after original publication. After 3 months, no further data revisions take place. For example, data first published in the January release will be subject to revision in the releases for February, March, and April.

**Uses of the Data** - The primary use of the indexes is to deflate trade statistics, notably the foreign trade sector of the National Income and Product Accounts (NIPA) constructed by the Department of Commerce. Other published indexes are useful for general market analysis. For trade in international services, balance of payments indexes are used for deflating NIPA, while international indexes are more appropriate for market analysis. Merchandise and services indexes also can be used to study U.S. competitiveness and to compute price elasticities, and the merchandise import indexes by country or region of origin are useful in terms of trade analysis.

**Email Subscription** - The U.S. import and export price indexes news release is available through an email subscription service at [www.bls.gov/bls/list.htm](http://www.bls.gov/bls/list.htm).

**Additional Information** - More detailed data are available on the Import/Export Price Indexes home page at [www.bls.gov/mxp](http://www.bls.gov/mxp). For import and export price indexes data requests, send an email to [mxpinfo@bls.gov](mailto:mxpinfo@bls.gov).

Information from this release will be made available to sensory impaired individuals upon request. Voice phone: (202)-691-5200; Federal Relay Service: 1-(800)-877-8339.