



Transmission of material in this release is embargoed until 8:30 a.m. (EST) Tuesday, November 15, 2016

USDL-16-2164

Technical information: (202) 691-7101 • MXPinfo@bls.gov • www.bls.gov/mxp

Media contact: (202) 691-5902 • PressOffice@bls.gov

U.S. IMPORT AND EXPORT PRICE INDEXES – OCTOBER 2016

U.S. import prices advanced 0.5 percent in October, the U.S. Bureau of Labor Statistics reported today, after a 0.2-percent increase in September. The October increase was driven by higher fuel prices which more than offset declining nonfuel prices. The price index for U.S. exports increased 0.2 percent in October following a 0.3-percent advance the previous month.

Chart 1. One-month percent change in the Import Price Index: October 2015 – October 2016

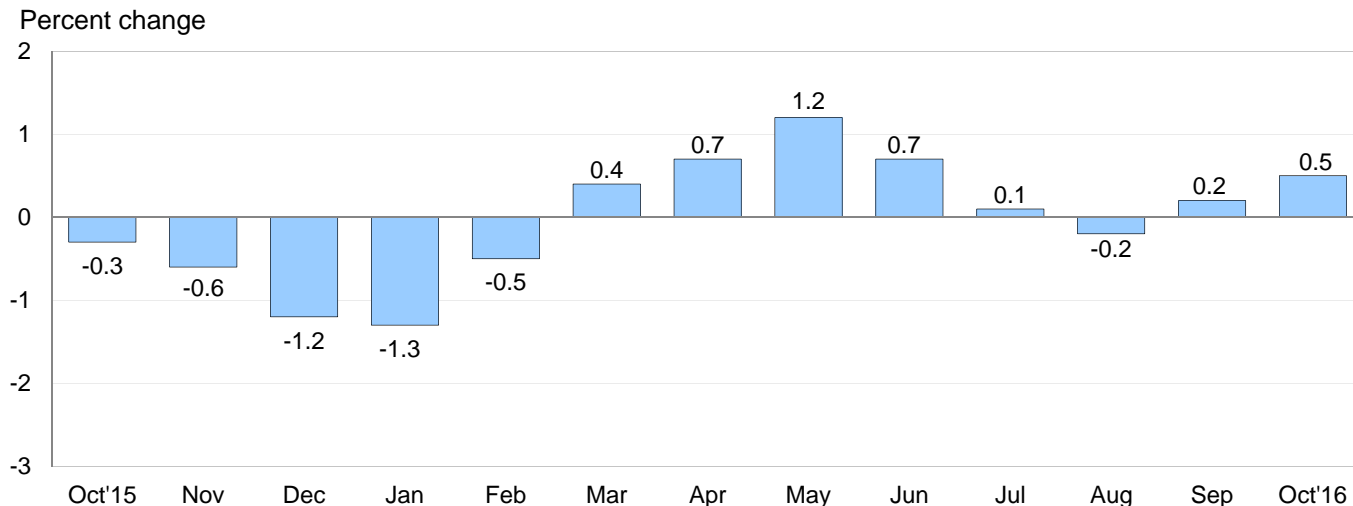
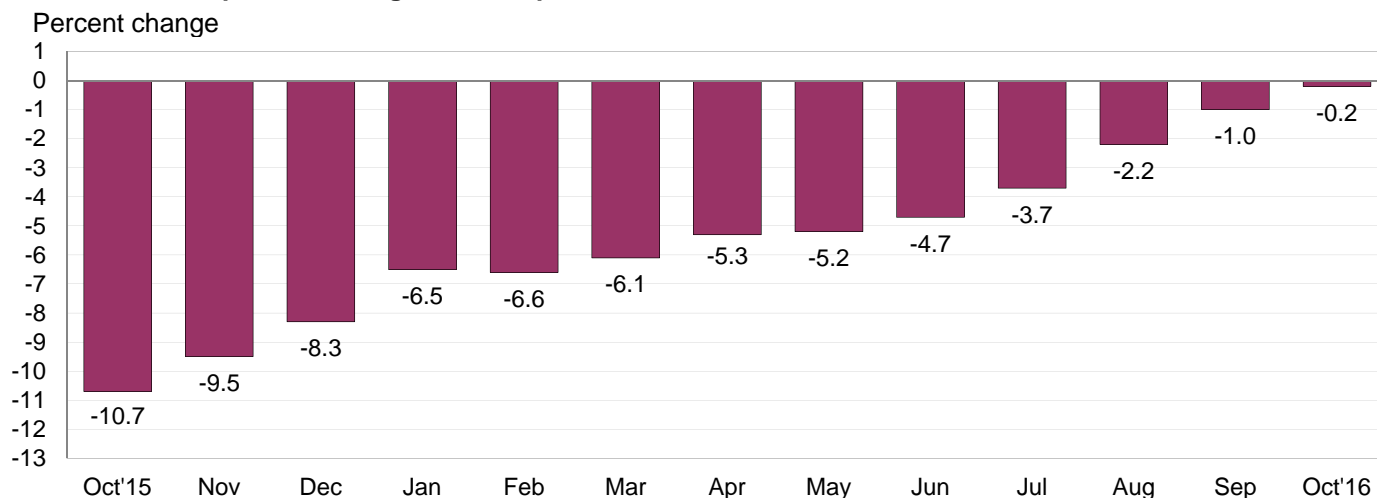


Chart 2. 12-month percent change in the Import Price Index: October 2015 – October 2016



All Imports: Prices for U.S. imports rose for the second consecutive month, advancing 0.5 percent in October following a 0.2-percent advance the previous month. Import prices fell 0.2 percent in August, the only monthly decline since February. Despite trending up over most of 2016, import prices edged down 0.2 percent for the year ended in October.

Fuel Imports: The price index for import fuel rose 7.2 percent in October, after a 1.5-percent advance in September and monthly declines in August and July. Both petroleum and natural gas contributed to the overall October rise in fuel prices, increasing 7.5 percent and 6.5 percent, respectively. Import fuel prices rose 3.8 percent over the past year, the first 12-month advance for the index since a 2.9-percent increase in July 2014. The October 12-month increase was led by a 4.5-percent rise in petroleum prices which more than offset a 2.8-percent drop in natural gas prices.

All Imports Excluding Fuel: In contrast, nonfuel prices fell 0.1 percent for the second consecutive month in October. The decline was driven by falling prices for nonfuel industrial supplies and materials; capital goods; and foods, feeds, and beverages which more than offset rising prices for automotive vehicles and consumer goods. The price index for nonfuel imports fell for the year ended in October, decreasing 0.4 percent. Prices over the past 12 months declined across all categories except two; foods, feeds, and beverages rose 4.0 percent and automotive vehicles recorded no change.

Table A. Percent change in Import and Export Price Indexes, selected categories

Month	IMPORTS			EXPORTS		
	All imports	Fuel imports	Nonfuel imports	All exports	Agricultural exports	Non-agricultural exports
2015						
October.....	-0.3	-0.4	-0.3	-0.2	0.1	-0.3
November.....	-0.6	-4.0	-0.3	-0.7	-0.9	-0.7
December.....	-1.2	-10.0	-0.3	-1.1	-0.9	-1.1
2016						
January.....	-1.3	-15.6	-0.1	-0.9	-1.3	-0.9
February.....	-0.5	-6.8	-0.1	-0.4	0.7	-0.6
March.....	0.4	8.5	-0.1	-0.1	-2.1	0.2
April.....	0.7	9.8	0.1	0.5	0.8	0.4
May.....	1.2	12.7	0.3	1.1	3.0	1.0
June.....	0.7	10.5	-0.2	0.8	2.5	0.5
July.....	0.1	-2.1	0.3	0.2	-0.3	0.3
August.....	-0.2	-3.4 ^r	0.1 ^r	-0.8	-3.5	-0.5 ^r
September.....	0.2 ^r	1.5 ^r	-0.1 ^r	0.3	-1.1 ^r	0.4
October.....	0.5	7.2	-0.1	0.2	0.4	0.2
Oct. 2014 to 2015.....	-10.7	-47.4	-3.2	-6.7	-11.8	-6.1
Oct. 2015 to 2016.....	-0.2	3.8	-0.4	-1.1	-3.0	-0.8

^r Revised

Chart 3. One-month percent change in the Export Price Index: October 2015 – October 2016

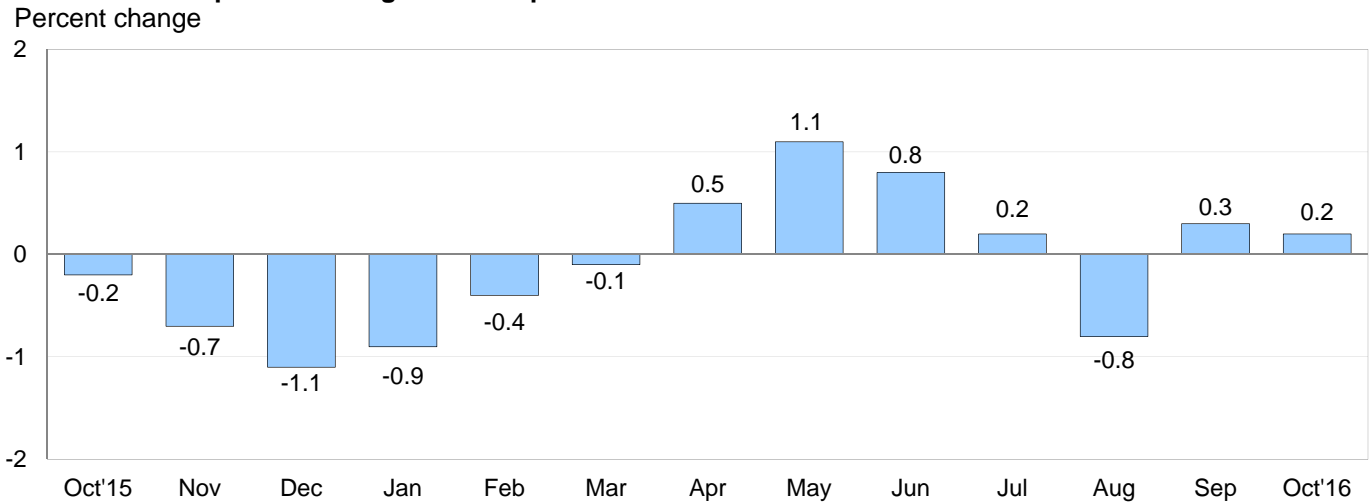
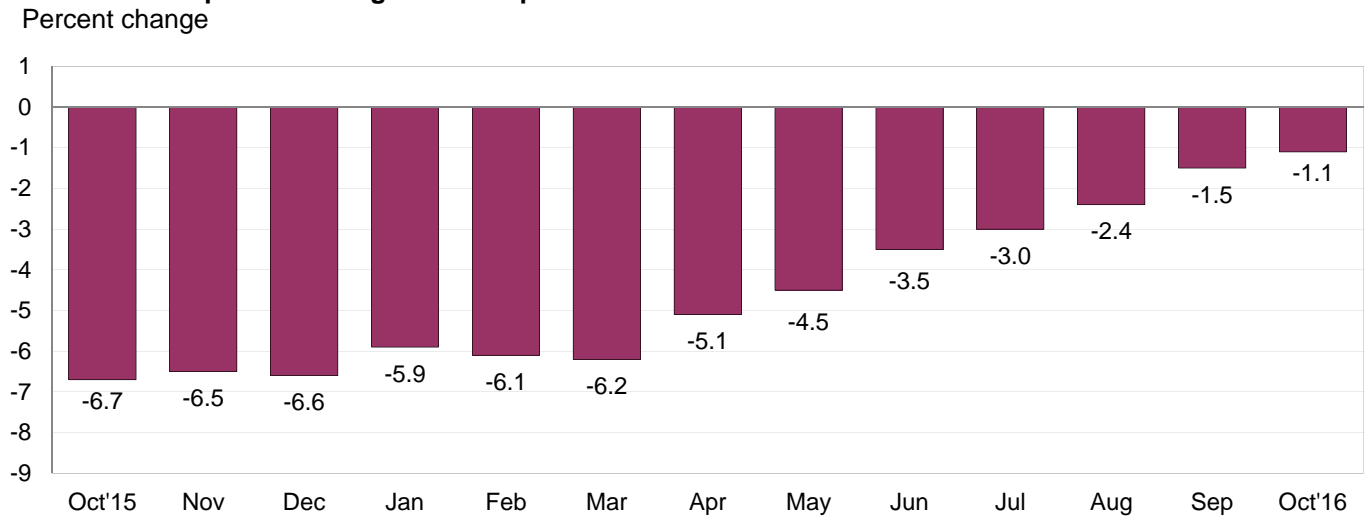


Chart 4. 12-month percent change in the Export Price Index: October 2015 – October 2016



All Exports: U.S. export prices increased 0.2 percent in October following a 0.3-percent advance in September. In October, higher agricultural and nonagricultural prices both contributed to the overall advance. Despite the recent increases, prices for U.S. exports fell over the past year, declining 1.1 percent. The over-the-year drop in export prices was the smallest 12-month decrease since the index fell 0.7 percent in October 2014.

Agricultural Exports: The price index for agricultural exports increased 0.4 percent in October, after decreasing 4.9 percent over the previous 3 months. The upturn in October was led by increasing prices for fruit, nuts, and wheat, which rose 4.4 percent, 5.1 percent, and 4.0 percent, respectively. Those increases more than offset a 3.1-percent drop in soybean prices which fell for the third consecutive month. Overall agricultural prices declined 3.0 percent for the year ended in October.

All Exports Excluding Agriculture: Nonagricultural prices increased 0.2 percent in October following a 0.4-percent rise the previous month. In October, higher prices for nonagricultural industrial supplies and materials and automotive vehicles more than offset falling prices for consumer goods and capital goods. Prices for nonagricultural exports declined 0.8 percent between October 2015 and October 2016.

SELECTED OCTOBER HIGHLIGHTS

Import Prices

Imports by Locality of Origin: Import prices from China recorded no change in October and declined 1.6 percent over the past year. Prices for imports from China have fallen or recorded no change on a monthly basis since December 2014 and on a 12-month basis since October 2014. The price index for imports from Japan continued a 4-month upward trend in October, rising 0.2 percent. Import prices from Japan rose 1.2 percent over the past 12 months, the largest over-the-year increase since September 2012. Price indexes rose in October for other major trading partners. Prices for imports from Canada rose 1.4 percent, driven by higher fuel prices. The price index for imports from the European Union advanced 0.2 percent and import prices from Mexico increased 0.1 percent.

Nonfuel Industrial Supplies and Materials: Prices for nonfuel industrial supplies and materials declined 0.7 percent for the second consecutive month in October. Lower prices for unfinished metals were the primary contributor to the monthly decreases in both October and September.

Finished Goods: Finished goods prices were mixed in October. Prices for automotive vehicles rose 0.3 percent, matching the largest 1-month advance since the index rose 0.7 percent in April 2012. Consumer goods also increased, ticking up 0.1 percent. In contrast, capital goods prices fell 0.2 percent driven by a 1.2-percent drop in computer prices.

Foods, Feeds, and Beverages: Foods, feeds, and beverages prices decreased 0.6 percent in October, led by a 3.8-percent decline in vegetable prices and a 2.7-percent drop in meat prices.

Transportation Services: Import air passenger fares rose 6.3 percent in October following a 4.2-percent rise the previous month. Higher European, Asian, and Latin American/Caribbean fares contributed to the overall October increase. Import air passenger fares advanced 0.2 percent for the year ended in October. The price index for import air freight increased 4.0 percent in October and fell 4.2 percent over the past year. The October advance was the largest monthly rise since the index increased 5.0 percent in October 2015.

Export Prices

Nonagricultural Industrial Supplies and Materials: Prices for nonagricultural industrial supplies and materials increased 0.9 percent in October, after rising 1.3 percent the previous month. Both increases were led by higher fuel prices which increased 5.3 percent in October and 5.9 percent in September.

Finished Goods: Export consumer goods prices fell 0.7 percent in October, the largest drop since the index declined 0.8 percent in January. Capital goods prices also decreased in October, edging down 0.1 percent. Automotive vehicle prices advanced 0.2 percent which was largely attributable to year-end model changeovers.

Transportation Services: Export air passenger fares increased 1.9 percent in October following an 11.1-percent decline the previous month. The index for export air passenger fares fell 3.6 percent over the past 12 months, driven by a 5.7-percent drop in Asian fares and a 3.6-percent decline in European fares. Prices for export air freight rose 0.7 percent in October and decreased 1.1 percent over the past year.

Import and Export Price Index data for November 2016 are scheduled for release on Tuesday, December 13, 2016 at 8:30 a.m. (EST).

Table 1. U.S. import price indexes and percent changes for selected categories of goods: October 2015 to October 2016

[2000=100, unless otherwise noted]

Description	End Use	Relative importance Sept. 2016 ¹	Index		Percent change				
			Sept. 2016	Oct. 2016	Annual Oct. 2015 to Oct. 2016	Monthly			
						June 2016 to July 2016	July 2016 to Aug. 2016	Aug. 2016 to Sept. 2016	Sept. 2016 to Oct. 2016
All commodities		100.000	120.7	121.3	-0.2	0.1	-0.2	0.2	0.5
All imports excluding food and fuels (Dec. 2010=100)		85.347	98.2	98.1	-0.7	0.2	0.0	-0.1	-0.1
All imports excluding petroleum		92.353	111.1	111.0	-0.4	0.5	0.1	0.0	-0.1
All imports excluding fuels (Dec. 2001=100)		91.727	115.2	115.1	-0.4	0.3	0.1	-0.1	-0.1
Foods, feeds, & beverages	0	6.380	180.8	179.8	4.0	3.1	1.4	0.4	-0.6
Agricultural foods, feeds & beverages, excluding distilled beverages.....	00	4.956	198.8	197.1	3.4	3.9	1.7	0.4	-0.9
Nonagricultural foods (fish, distilled beverages).....	01	1.424	140.2	140.8	6.2	0.1	0.1	0.9	0.4
Industrial supplies & materials	1	21.806	156.9	160.4	0.8	0.3	-1.2	0.2	2.2
Industrial supplies & materials excluding petroleum.....		14.159	141.7	140.9	-0.7	2.2	0.5	-0.6	-0.6
Industrial supplies & materials excluding fuels (Dec. 2001=100).....		13.533	161.0	159.8	-0.6	1.6	0.3	-0.7	-0.7
Industrial supplies & materials, durable....		8.294	151.3	149.3	1.2	2.5	0.7	-0.9	-1.3
Industrial supplies & materials nondurable excluding petroleum.....		5.239	129.6	130.2	-3.3	1.7	0.2	-0.2	0.5
Fuels & lubricants.....	10	8.273	152.0	162.9	3.8	-2.1	-3.4	1.5	7.2
Petroleum & petroleum products.....	100	7.647	163.5	175.8	4.5	-3.1	-4.1	1.6	7.5
Crude.....	10000	5.572	166.9	178.5	4.9	-3.0	-4.0	1.0	7.0
Fuels, n.e.s.-coals & gas.....	101	0.452	89.7	94.3	-3.4	20.7	8.0	0.4	5.1
Gas-natural.....	10110	0.362	74.1	78.9	-2.8	28.0	10.3	0.5	6.5
Paper & paper base stocks.....	11	0.567	105.7	104.7	-4.1	-0.5	0.1	-1.2	-0.9
Materials associated with nondurable supplies & materials.....	12	4.738	149.0	149.4	-3.0	0.5	-0.5	-0.1	0.3
Selected building materials.....	13	1.302	137.4	137.3	3.3	0.1	0.2	-0.3	-0.1
Unfinished metals related to durable goods.....	14	3.531	200.1	195.7	3.7	6.0	1.5	-1.8	-2.2
Finished metals related to durable goods.....	15	1.687	145.4	143.5	-3.0	0.7	0.4	-0.8	-1.3
Nonmetals related to durable goods.....	16	1.708	108.0	107.8	-1.1	-0.7	-0.2	0.3	-0.2
Capital goods	2	28.484	89.1	88.9	-1.4	-0.1	0.0	0.2	-0.2
Electric generating equipment.....	20	3.455	115.9	115.9	-1.0	-0.1	0.1	0.0	0.0
Nonelectrical machinery.....	21	22.333	81.6	81.4	-1.6	-0.1	0.0	0.2	-0.2
Transportation equipment excluding motor vehicles (Dec. 2001=100).....	22	2.696	136.3	136.3	-0.4	-0.1	-0.1	-0.1	0.0
Automotive vehicles, parts & engines	3	16.093	110.4	110.7	0.0	-0.2	-0.1	0.1	0.3
Consumer goods, excluding automobiles	4	27.237	106.6	106.7	-0.5	-0.1	-0.2	0.0	0.1
Nondurables, manufactured.....	40	13.006	119.3	119.2	0.0	-0.2	-0.1	-0.2	-0.1
Durables, manufactured.....	41	12.744	94.0	94.3	-1.2	0.0	-0.2	0.0	0.3
Nonmanufactured consumer goods.....	42	1.487	118.5	118.6	0.3	-0.6	-0.3	0.4	0.1

¹ Relative importance figures are based on 2014 trade values.

NOTES: Data may be revised in each of the 3 months after original publication.

Dash = Not available

Table 2. U.S. export price indexes and percent changes for selected categories of goods: October 2015 to October 2016

[2000=100, unless otherwise noted]

Description	End Use	Relative importance Sept. 2016 ¹	Index		Percent change				
			Sept. 2016	Oct. 2016	Annual Oct. 2015 to Oct. 2016	Monthly			
						June 2016 to July 2016	July 2016 to Aug. 2016	Aug. 2016 to Sept. 2016	Sept. 2016 to Oct. 2016
All commodities.....		100.000	120.5	120.7	-1.1	0.2	-0.8	0.3	0.2
Agricultural commodities.....		8.922	173.0	173.7	-3.0	-0.3	-3.5	-1.1	0.4
All exports excluding food and fuels (Dec. 2010=100).....		84.667	98.4	98.2	-0.9	0.3	-0.2	0.0	-0.2
Nonagricultural commodities.....		91.078	116.5	116.7	-0.8	0.3	-0.5	0.4	0.2
Foods, feeds, & beverages.....	0	8.360	174.8	175.4	-2.8	-0.5	-3.7	-0.9	0.3
Agricultural foods, feeds & beverages, excluding distilled beverages.....	00	7.654	173.9	174.5	-3.6	-0.6	-4.1	-1.2	0.3
Nonagricultural foods (fish, distilled beverages).....	01	0.706	193.0	193.2	6.2	0.9	0.6	2.9	0.1
Industrial supplies & materials.....	1	29.095	141.9	143.1	-1.0	0.8	-1.3	1.3	0.8
Industrial supplies & materials, durable....		10.750	154.8	153.1	0.3	1.8	0.2	0.0	-1.1
Industrial supplies & materials, nondurable.....		18.345	135.8	138.5	-1.7	0.2	-2.1	2.0	2.0
Agricultural industrial supplies & materials.....	10	1.268	172.8	174.2	1.4	1.6	0.3	-0.3	0.8
Nonagricultural industrial supplies & materials.....		27.827	140.8	142.0	-1.1	0.8	-1.3	1.3	0.9
Fuels & lubricants.....	11	6.973	148.3	156.2	0.2	-0.4	-5.0	5.9	5.3
Nonagricultural supplies & materials excluding fuels & building materials....	12	19.805	149.4	148.3	-2.0	1.2	-0.2	-0.1	-0.7
Selected building materials.....	13	1.049	116.9	117.2	3.5	0.1	0.3	0.9	0.3
Capital goods.....	2	38.949	106.9	106.8	-0.4	-0.2	-0.1	0.1	-0.1
Electrical generating equipment.....	20	3.964	112.2	111.9	-1.0	0.0	-0.2	-0.1	-0.3
Nonelectrical machinery.....	21	26.228	93.9	93.8	-1.0	-0.2	-0.2	0.1	-0.1
Transportation equipment excluding motor vehicles (Dec. 2001=100).....	22	8.757	164.9	165.1	1.9	0.1	0.1	0.1	0.1
Automotive vehicles, parts & engines.....	3	10.680	112.7	112.9	-0.7	0.0	-0.5	0.1	0.2
Consumer goods, excluding automotives.....	4	12.916	110.6	109.8	-1.9	0.5	-0.2	0.2	-0.7
Nondurables, manufactured.....	40	5.884	106.7	106.2	-1.4	0.9	-0.5	0.2	-0.5
Durables, manufactured.....	41	5.404	108.0	106.8	-2.8	0.0	0.1	0.1	-1.1

¹ Relative importance figures are based on 2014 trade values.

NOTES: Data may be revised in each of the 3 months after original publication.

Dash = Not available

Table 3. U.S. import price indexes and percent changes for selected categories of goods: October 2015 to October 2016

[December 2005=100, unless otherwise noted]

Description	NAICS	Relative importance Sept. 2016 ¹	Index		Percent change				
			Sept. 2016	Oct. 2016	Annual	Monthly			
					Oct. 2015 to Oct. 2016	June 2016 to July 2016	July 2016 to Aug. 2016	Aug. 2016 to Sept. 2016	Sept. 2016 to Oct. 2016
Nonmanufacturing.....		8.369	86.5	90.6	4.4	0.2	-1.4	1.1	4.7
Agriculture, forestry, fishing and hunting.....	11	2.147	185.9	182.2	5.6	6.8	4.7	1.5	-2.0
Crop production.....	111	1.776	204.2	200.1	8.0	8.8	5.8	2.3	-2.0
Animal production (Dec. 2014=100).....	112	0.198	76.1	70.3	-9.5	-2.7	1.5	-4.2	-7.6
Mining.....	21	6.222	74.4	79.6	4.2	-1.8	-3.3	0.9	7.0
Mining (except oil and gas) (Dec. 2006=100).....	212	0.239	95.3	95.9	-1.2	-0.4	0.0	0.7	0.6
Manufacturing.....		91.308	108.9	109.0	-0.6	0.1	-0.2	0.0	0.1
Manufacturing, part 1.....	31	12.192	123.8	123.8	0.3	0.0	-0.2	0.1	0.0
Food manufacturing.....	311	3.516	153.9	153.9	3.1	0.5	-0.6	0.5	0.0
Beverage and tobacco product manufacturing.....	312	1.088	117.8	118.3	0.0	-0.8	-0.1	0.1	0.4
Textile mills (Dec. 2011=100).....	313	0.402	97.8	97.7	-2.5	0.2	-1.2	0.1	-0.1
Textile product mills.....	314	0.902	109.6	109.5	-1.6	0.0	0.7	0.1	-0.1
Apparel manufacturing.....	315	4.368	111.2	111.2	-0.4	-0.1	0.0	0.0	0.0
Leather and allied product manufacturing.....	316	1.918	123.0	122.9	-1.3	-0.1	-0.1	-0.1	-0.1
Manufacturing, part 2.....	32	16.700	115.2	116.1	-0.7	-0.3	-0.9	0.2	0.8
Wood product manufacturing.....	321	0.790	115.7	115.7	5.8	0.2	0.4	-0.5	0.0
Paper manufacturing.....	322	1.065	104.4	104.0	-2.4	-0.3	0.0	-0.9	-0.4
Petroleum and coal products manufacturing.....	324	1.944	73.1	79.2	1.9	-3.3	-4.3	3.4	8.3
Chemical manufacturing.....	325	9.387	129.9	129.8	-1.2	0.2	-0.6	-0.2	-0.1
Plastics and rubber products manufacturing.....	326	2.280	117.6	117.0	-1.4	0.4	0.0	-0.1	-0.5
Nonmetallic mineral product manufacturing.....	327	1.032	129.4	129.4	-0.6	-0.2	-0.1	0.1	0.0
Manufacturing, part 3.....	33	62.415	103.5	103.4	-0.8	0.2	0.0	0.0	-0.1
Primary metal manufacturing.....	331	4.276	132.0	129.8	1.7	5.0	1.6	-1.9	-1.7
Fabricated metal product manufacturing.....	332	3.104	122.1	121.6	-2.6	0.0	0.0	0.0	-0.4
Machinery manufacturing.....	333	7.710	116.5	116.4	-1.7	0.0	-0.2	0.2	-0.1
Computer and electronic product manufacturing.....	334	17.994	76.3	76.3	-1.5	-0.1	-0.3	0.1	0.0
Electrical equipment, appliance, and component manufacturing.....	335	4.827	114.5	115.0	-1.6	-0.2	0.1	0.1	0.4
Transportation equipment manufacturing.....	336	17.305	109.6	109.9	0.1	-0.3	0.0	0.1	0.3
Furniture and related product manufacturing.....	337	1.663	115.0	115.0	-0.3	-0.1	-0.3	0.1	0.0
Miscellaneous manufacturing.....	339	5.536	119.8	119.3	0.2	0.2	0.0	-0.2	-0.4

¹ Relative importance figures are based on 2014 trade values.

NOTES: Data may be revised in each of the 3 months after original publication.

Dash = Not available

Table 4. U.S. export price indexes and percent changes for selected categories of goods: October 2015 to October 2016

[December 2005=100, unless otherwise noted]

Description	NAICS	Relative importance Sept. 2016 ¹	Index		Percent change				
			Sept. 2016	Oct. 2016	Annual Oct. 2015 to Oct. 2016	Monthly			
						June 2016 to July 2016	July 2016 to Aug. 2016	Aug. 2016 to Sept. 2016	Sept. 2016 to Oct. 2016
Nonmanufacturing.....		6.921	122.1	121.4	-2.6	0.7	-4.3	0.0	-0.6
Agriculture, forestry, fishing and hunting.....	11	4.485	149.0	150.6	-4.9	-1.5	-5.7	-1.0	1.1
Crop production.....	111	4.197	154.7	156.4	-4.9	-1.6	-6.1	-1.6	1.1
Mining.....	21	2.436	69.5	67.0	2.4	5.5	-1.6	2.1	-3.6
Mining (except oil and gas).....	212	1.167	80.4	85.2	6.6	0.6	2.5	1.3	6.0
Manufacturing.....		91.740	111.3	111.5	-0.9	0.2	-0.4	0.3	0.2
Manufacturing, part 1.....	31	6.780	135.3	134.7	-0.2	0.6	-0.1	-0.6	-0.4
Food manufacturing.....	311	4.548	151.9	151.2	-0.2	0.9	-0.5	-0.7	-0.5
Beverage and tobacco product manufacturing.....	312	0.647	112.9	112.0	5.1	2.0	1.6	-0.7	-0.8
Manufacturing, part 2.....	32	23.171	105.7	107.1	-1.8	-0.4	-1.5	1.4	1.3
Paper manufacturing.....	322	1.720	120.2	118.9	-3.9	-0.4	0.1	-0.2	-1.1
Printing and related support activities (Dec. 2015=100).....	323	0.268	100.0	100.0	-	0.0	0.0	0.0	0.0
Petroleum and coal products manufacturing.....	324	4.495	85.7	92.5	1.8	-3.2	-5.5	7.5	7.9
Chemical manufacturing.....	325	12.922	113.8	113.8	-3.0	0.7	-0.9	0.0	0.0
Plastics and rubber products manufacturing.....	326	2.364	114.3	113.8	-2.5	-0.8	-0.2	0.1	-0.4
Nonmetallic mineral product manufacturing.....	327	0.867	112.9	112.7	0.2	0.0	0.4	0.2	-0.2
Manufacturing, part 3.....	33	61.789	111.2	111.0	-0.6	0.4	-0.2	0.0	-0.2
Primary metal manufacturing.....	331	4.358	137.6	134.5	0.4	4.9	0.1	-0.4	-2.3
Fabricated metal product manufacturing...	332	3.300	130.4	130.3	0.5	0.1	0.2	0.0	-0.1
Machinery manufacturing.....	333	11.604	126.0	126.0	0.6	0.0	-0.1	0.0	0.0
Computer and electronic product manufacturing.....	334	14.366	83.2	82.8	-2.8	-0.2	-0.2	-0.1	-0.5
Electrical equipment, appliance, and component manufacturing.....	335	3.830	112.3	112.0	-1.2	-0.3	-0.3	0.2	-0.3
Transportation equipment manufacturing..	336	18.323	122.1	122.3	0.4	0.0	-0.2	0.1	0.2
Furniture and related product manufacturing (Dec. 2011=100).....	337	0.417	117.9	118.0	7.2	1.4	0.9	0.2	0.1
Miscellaneous manufacturing.....	339	5.590	119.7	119.6	-2.2	-0.2	0.1	0.1	-0.1

¹ Relative importance figures are based on 2014 trade values.

NOTES: Data may be revised in each of the 3 months after original publication.

Dash = Not available

Table 5. U.S. import price indexes and percent changes for selected categories of goods: October 2015 to October 2016

[2000=100, unless otherwise noted]

Description	Harmonized system	Relative importance Sept. 2016 ¹	Index		Percent change				
			Sept. 2016	Oct. 2016	Annual	Monthly			
					Oct. 2015 to Oct. 2016	June 2016 to July 2016	July 2016 to Aug. 2016	Aug. 2016 to Sept. 2016	Sept. 2016 to Oct. 2016
Live animals; animal products.....	I	1.494	191.6	189.8	5.9	0.2	0.8	0.2	-0.9
Meat and edible meat offal.....	02	0.389	238.8	236.3	6.2	0.2	1.3	-0.3	-1.0
Fish and crustaceans, molluscs and other aquatic invertebrates.....	03	0.802	145.0	145.8	12.0	1.2	0.8	1.7	0.6
Vegetable products.....	II	2.257	224.1	221.9	9.6	9.7	6.5	3.2	-1.0
Edible vegetables, roots, and tubers.....	07	0.579	525.8	503.3	0.9	1.1	5.3	21.5	-4.3
Edible fruit and nuts; peel of citrus fruit or melons.....	08	0.772	127.1	127.3	34.4	36.2	18.4	-4.0	0.2
Coffee, tea, mate and spices.....	09	0.372	235.4	234.5	2.6	2.4	-0.6	0.9	-0.4
Oilseeds & misc grains, seeds, plants, straw & fodder (Dec. 2015=100).....	12	0.155	95.1	97.1	-	-0.8	-2.9	-7.9	2.1
Animal or vegetable fats and oils (Dec. 2009=100).....	III	0.290	110.8	109.9	6.8	0.2	0.4	3.3	-0.8
Prepared foodstuffs, beverages, and tobacco.....	IV	2.783	160.8	160.9	0.8	-0.1	-1.6	-0.1	0.1
Sugars and sugar confectionary (Dec. 2012=100).....	17	0.192	86.8	87.2	2.2	0.0	0.5	-0.2	0.5
Cocoa and cocoa preparations (Dec. 2009=100).....	18	0.246	114.5	111.1	-2.5	0.1	-2.0	1.4	-3.0
Preparations of cereals, flour, starch or milk; bakers' wares (Dec. 2007=100).....	19	0.286	133.0	133.0	0.6	-0.1	-0.1	0.0	0.0
Preparations of vegetables, fruit, nuts, or other parts of plants.....	20	0.332	159.5	163.4	7.1	1.9	-0.2	0.9	2.4
Beverages, spirits, and vinegar.....	22	1.026	127.7	128.0	-0.2	-0.8	-0.1	0.1	0.2
Mineral products.....	V	8.302	151.4	162.3	3.0	-2.2	-3.4	1.4	7.2
Mineral fuels, oils and residuals, bituminous substances and mineral waxes.....	27	8.139	149.0	159.9	3.4	-2.1	-3.5	1.4	7.3
Products of the chemical or allied industries.....	VI	8.809	146.0	145.5	-0.8	0.1	-0.4	-0.2	-0.3
Inorganic chemicals.....	28	0.546	254.5	249.3	-13.3	-1.5	0.0	-1.2	-2.0
Organic chemicals.....	29	2.393	121.2	120.7	-0.4	0.2	0.2	0.3	-0.4
Pharmaceutical products.....	30	3.815	140.7	140.4	1.7	-0.4	-0.6	-0.3	-0.2
Fertilizers (Dec. 2009=100).....	31	0.258	70.2	69.8	-23.8	3.5	-8.3	-4.4	-0.6
Tanning extracts; dye, pigments, varnish, paints & putty (Dec. 2011=100).....	32	0.195	101.6	102.6	4.7	2.8	0.1	0.3	1.0
Miscellaneous chemical products.....	38	0.671	102.1	102.1	9.5	0.7	0.3	0.3	0.0
Plastics and articles thereof; rubber and articles thereof.....	VII	3.503	136.9	137.0	-1.2	0.4	-0.1	0.0	0.1
Plastics and articles thereof.....	39	2.243	140.1	139.9	-1.8	0.0	-0.1	0.1	-0.1
Rubber and articles thereof.....	40	1.260	132.6	133.2	-0.1	1.1	-0.2	-0.2	0.5
Raw hides, skins, leather, furskins, travel goods, etc.....	VIII	0.704	123.3	123.3	-3.0	0.0	-0.2	0.0	0.0
Articles of leather; travel goods, bags, etc. of various materials.....	42	0.671	128.6	128.6	-1.2	0.0	-0.2	-0.1	0.0
Wood, wood charcoal, cork, straw, basketware and wickerwork.....	IX	0.827	141.0	140.9	5.5	0.3	0.4	-0.4	-0.1
Wood and articles of wood; wood charcoal (Dec. 2014=100).....	44	0.788	96.9	96.9	5.9	0.3	0.4	-0.4	0.0
Woodpulp, recovered paper, and paper products.....	X	1.143	108.9	108.3	-2.3	-0.3	0.0	-0.6	-0.6
Paper and paperboard; articles of paper pulp, paper or paperboard.....	48	0.779	104.2	103.2	-1.9	0.1	0.0	-0.4	-1.0

See footnotes at end of table.

Table 5. U.S. import price indexes and percent changes for selected categories of goods: October 2015 to October 2016 — Continued
 [2000=100, unless otherwise noted]

Description	Harmoni- zied system	Relative importance Sept. 2016 ¹	Index		Percent change				
			Sept. 2016	Oct. 2016	Annual Oct. 2015 to Oct. 2016	Monthly			
						June 2016 to July 2016	July 2016 to Aug. 2016	Aug. 2016 to Sept. 2016	Sept. 2016 to Oct. 2016
Printed matter (Dec. 2015=100).....	49	0.212	100.9	100.7	-	0.3	0.0	0.3	-0.2
Textile and textile articles.....	XI	5.490	113.4	113.3	-0.6	0.0	0.1	0.1	-0.1
Articles of apparel and clothing accessories, knitted or crocheted.....	61	2.267	103.6	103.7	-0.3	0.0	0.1	0.1	0.1
Articles of apparel and clothing accessories, not knitted or crocheted.....	62	1.893	119.5	119.2	-0.4	-0.3	0.0	-0.1	-0.3
Made-up or worn textile articles.....	63	0.640	104.1	104.0	-1.3	-0.1	1.2	0.1	-0.1
Headgear, umbrellas, artificial flowers, etc.....	XII	1.527	122.4	122.4	-1.0	-0.2	-0.1	-0.1	0.0
Footwear and parts of such articles.....	64	1.303	121.5	121.5	-1.1	-0.2	-0.2	-0.1	0.0
Stone, plaster, cement, asbestos, ceramics, glass etc.....	XIII	0.958	131.0	130.9	-0.8	-0.4	-0.2	0.0	-0.1
Articles of stone, plaster, cement, asbestos, or mica (Dec. 2015=100).....	68	0.328	97.8	97.8	-	-1.0	-0.3	-0.4	0.0
Ceramic products.....	69	0.282	137.5	137.4	-0.6	-0.1	-0.1	0.4	-0.1
Glass and glassware.....	70	0.348	129.9	129.9	-0.1	-0.1	-0.2	0.2	0.0
Pearls, stones, precious metals, imitation jewelry, and coins.....	XIV	3.186	176.7	172.7	4.5	5.7	1.1	-1.3	-2.3
Base metals and articles of base metals. ...	XV	5.474	156.4	155.2	-2.3	1.0	0.4	-0.6	-0.8
Iron and steel.....	72	1.352	172.1	167.7	0.5	2.3	0.7	-1.5	-2.6
Articles of iron or steel.....	73	1.709	137.5	136.6	-5.5	0.0	0.1	-0.4	-0.7
Copper and articles thereof.....	74	0.360	241.9	239.1	-8.0	0.2	0.0	0.1	-1.2
Aluminum and articles thereof.....	76	0.713	119.1	120.3	-3.0	0.0	-0.2	-1.3	1.0
Tools, implements, cutlery, spoons and forks, of base metal; parts thereof.....	82	0.445	122.4	122.3	-3.8	0.0	0.0	0.1	-0.1
Miscellaneous articles of base metal.....	83	0.526	136.5	136.5	-0.7	-0.1	-0.1	0.0	0.0
Machinery, electrical equipment, TV image and sound recorders, parts, etc.....	XVI	30.583	80.8	80.8	-1.5	0.0	-0.2	0.2	0.0
Machinery and mechanical appliances; parts thereof.....	84	15.560	85.9	85.7	-1.6	0.1	-0.3	0.4	-0.2
Electrical machinery and equip, sound and TV recorders & reproducers, parts.....	85	15.023	75.8	76.1	-1.3	-0.1	-0.1	0.0	0.4
Vehicles, aircraft, vessels and associated transport equipment.....	XVII	14.365	113.9	114.3	-0.1	-0.3	0.0	0.0	0.4
Motor vehicles and their parts.....	87	12.874	112.6	113.0	0.0	-0.4	0.0	0.1	0.4
Aircraft, spacecraft, and parts thereof (Dec. 2002=100).....	88	1.417	118.8	118.9	-0.7	-0.1	-0.1	0.0	0.1
Optical, photo, measuring, medical & musical instruments; & timepieces.....	XVIII	4.027	103.5	103.2	0.1	-0.2	0.3	0.0	-0.3
Optical, photographic, measuring and medical instruments.....	90	3.695	100.3	100.0	0.0	-0.3	0.3	0.0	-0.3
Clocks and watches and parts thereof.....	91	0.268	142.3	142.2	1.1	0.1	-0.1	0.6	-0.1
Miscellaneous manufactured articles.....	XX	4.191	111.8	111.8	-0.5	-0.2	-0.1	-0.1	0.0
Furniture & stuffed furnishings; lamps & lighting fittings, nesoi; prefab bldgs.....	94	2.567	116.5	116.7	-0.3	-0.2	-0.2	0.1	0.2
Toys, games and sports equipment; parts and accessories thereof.....	95	1.347	103.2	103.3	-0.6	-0.2	0.0	-0.2	0.1
Miscellaneous manufactured articles.....	96	0.277	133.8	130.9	-2.3	-0.2	-0.2	-0.8	-2.2

¹ Relative importance figures are based on 2014 trade values.

NOTES: Data may be revised in each of the 3 months after original publication.

Dash = Not available

Table 6. U.S. export price indexes and percent changes for selected categories of goods: October 2015 to October 2016

[2000=100, unless otherwise noted]

Description	Harmoni- zied system	Relative importance Sept. 2016 ¹	Index		Percent change				
			Sept. 2016	Oct. 2016	Annual	Monthly			
					Oct. 2015 to Oct. 2016	June 2016 to July 2016	July 2016 to Aug. 2016	Aug. 2016 to Sept. 2016	Sept. 2016 to Oct. 2016
Live animals; animal products.....	I	1.777	191.2	191.8	4.2	1.2	-0.2	1.5	0.3
Meat & edible meat offal (Dec. 2006=100)...	02	1.020	146.4	146.7	3.6	0.2	-1.3	-0.9	0.2
Vegetable products.....	II	4.169	187.7	190.2	-5.7	-1.5	-6.7	-1.7	1.3
Edible fruit and nuts; peel of citrus fruit or melons.....	08	0.845	142.0	152.0	-12.9	-1.7	-6.7	-2.1	7.0
Cereals.....	10	1.143	164.3	168.9	-13.8	-8.6	-2.9	-3.7	2.8
Oilseeds and misc. grains, seeds, fruits, plants, straw and fodder.....	12	1.637	204.8	199.0	2.7	3.4	-8.2	-2.0	-2.8
Prepared foodstuffs, beverages, and tobacco.....	IV	2.966	148.9	147.9	-1.2	0.5	-0.1	-1.1	-0.7
Preparations of vegetables, fruit, nuts or other parts of plants (Dec. 2009=100)....	20	0.374	117.6	116.5	-1.8	-1.2	0.1	0.0	-0.9
Beverages, spirits, and vinegar (Dec. 2008=100).....	22	0.546	110.6	111.9	3.3	0.8	-1.6	0.4	1.2
Residues and waste from the food industries; prepared animal feed.....	23	0.684	206.9	204.0	0.4	2.9	0.0	-3.9	-1.4
Mineral products.....	V	6.998	172.1	179.1	1.2	0.7	-3.9	6.0	4.1
Ores, slag and ash (Dec. 2012=100).....	26	0.514	81.2	81.5	10.9	2.1	1.3	3.4	0.4
Mineral fuels, oils and residuals, bituminous substances and mineral waxes.....	27	6.280	163.9	171.4	0.6	0.6	-4.3	6.4	4.6
Products of the chemical or allied industries.....	VI	10.745	135.9	135.3	-3.4	0.4	-0.6	-0.1	-0.4
Inorganic chemicals.....	28	0.905	172.6	167.6	-8.6	0.9	-0.4	-1.0	-2.9
Organic chemicals.....	29	2.453	132.4	132.6	-3.4	-0.2	-0.5	0.2	0.2
Pharmaceutical products.....	30	2.968	108.9	108.7	-1.4	1.9	-0.7	0.4	-0.2
Tanning or dyeing extracts, dyes, paints varnish, putty, & inks (Dec. 2015=100)....	32	0.539	97.7	97.5	-	-0.2	-0.3	-0.2	-0.2
Essential oils and resinoids; perfumery cosmetic or toilet preparations.....	33	0.833	134.6	131.1	-3.2	0.0	0.1	0.0	-2.6
Soap; lubricants; waxes, polishing or scouring products; candles, pastes.....	34	0.514	115.8	116.4	3.6	-0.6	-0.1	0.2	0.5
Miscellaneous chemical products.....	38	1.848	146.6	146.1	-3.2	0.1	-0.9	-0.2	-0.3
Plastics and articles thereof; rubber and articles thereof.....	VII	5.101	136.5	136.6	-1.7	0.5	-0.7	0.3	0.1
Plastics and articles thereof.....	39	4.116	131.9	132.2	-1.9	0.8	-0.8	0.2	0.2
Rubber and articles thereof.....	40	0.985	156.3	155.5	-1.0	-0.3	0.0	0.6	-0.5
Raw hides, skins, leather, furskins, travel goods, etc.....	VIII	0.330	120.0	120.4	-3.5	0.2	-0.3	0.7	0.3
Raw hides and skins other than furskins and leather (Dec.2014=100).....	41	0.180	69.0	69.5	-4.8	0.1	-1.3	0.3	0.7
Wood, wood charcoal, cork, straw, baskets and wickerwork (Dec. 2014=100).....	IX	0.660	96.7	97.1	2.8	-0.4	0.5	1.2	0.4
Woodpulp, recovered paper, and paper products.....	X	2.151	122.9	122.7	-0.6	1.0	1.3	-0.9	-0.2
Woodpulp and recovered paper.....	47	0.645	130.0	129.6	2.5	4.1	5.1	-3.0	-0.3
Paper and paperboard; articles of paper pulp, paper or paperboard.....	48	1.125	118.9	118.6	-3.1	-0.4	-0.3	0.1	-0.3
Printed material (Dec. 2014=100).....	49	0.381	100.4	100.6	1.5	0.0	0.0	0.0	0.2
Textile and textile articles.....	XI	1.716	120.0	119.7	-1.1	0.9	-0.7	0.2	-0.3
Cotton, including yarns and woven fabrics thereof.....	52	0.410	122.1	122.3	4.1	5.9	-2.9	0.7	0.2

See footnotes at end of table.

Table 6. U.S. export price indexes and percent changes for selected categories of goods: October 2015 to October 2016 — Continued
 [2000=100, unless otherwise noted]

Description	Harmoni- zied system	Relative importance Sept. 2016 ¹	Index		Percent change				
			Sept. 2016	Oct. 2016	Annual Oct. 2015 to Oct. 2016	Monthly			
						June 2016 to July 2016	July 2016 to Aug. 2016	Aug. 2016 to Sept. 2016	Sept. 2016 to Oct. 2016
Stone, plaster, cement, asbestos, ceramics, glass etc.....	XIII	0.871	123.1	123.1	0.7	0.0	0.2	0.0	0.0
Articles of stone, plaster, cement, asbestos, or mica (Dec. 2015=100).....	68	0.295	101.2	101.2	–	0.0	0.7	0.0	0.0
Glass and glassware.....	70	0.440	99.7	99.7	0.6	0.0	0.0	0.0	0.0
Pearls, stones, precious metals, imitation jewelry, and coins.....	XIV	4.566	240.4	235.4	3.8	4.7	0.3	-0.3	-2.1
Base metals and articles of base metals. ...	XV	4.954	142.8	142.5	-2.3	-0.2	0.2	-0.3	-0.2
Iron and steel.....	72	1.009	142.7	140.7	-4.6	-2.8	2.1	-0.6	-1.4
Copper and articles thereof.....	74	0.416	149.6	152.9	-8.4	2.8	-0.1	-3.0	2.2
Aluminum and articles thereof.....	76	0.766	103.2	102.9	-3.4	0.1	-1.5	0.0	-0.3
Tools, implements, cutlery, spoons and forks, of base metal (Dec. 2015=100).	82	0.392	100.0	100.0	–	0.1	-0.1	0.0	0.0
Miscellaneous articles of base metal.....	83	0.355	147.8	147.8	-0.5	0.0	0.0	0.1	0.0
Machinery, electrical equipment, TV image and sound recorders, parts, etc.....	XVI	29.708	95.5	95.2	-1.3	-0.2	-0.2	0.0	-0.3
Machinery and mechanical appliances; parts thereof.....	84	17.757	112.3	112.2	-0.9	-0.3	-0.2	-0.1	-0.1
Electrical machinery and equipment and parts and accessories thereof.....	85	11.951	77.3	76.9	-2.0	-0.1	-0.1	0.0	-0.5
Vehicles, aircraft, vessels and associated transport equipment.....	XVII	15.184	131.6	131.9	0.6	0.0	-0.2	0.2	0.2
Motor vehicles and their parts.....	87	9.201	114.4	114.8	-0.2	0.0	-0.5	0.1	0.3
Optical, photo, measuring, medical & musical instruments; & timepieces.....	XVIII	6.195	106.0	105.9	-1.2	-0.1	0.0	0.0	-0.1
Miscellaneous manufactured articles.....	XX	1.562	112.4	112.5	0.8	0.5	0.1	0.1	0.1
Furniture; stuffed furnishings; lamps and lighting fittings nesoi;.....	94	0.941	128.5	128.7	3.3	1.1	0.5	0.2	0.2
Toys, games and sports equipment; parts and accessories thereof.....	95	0.472	89.2	89.2	-0.7	0.0	0.0	0.0	0.0

¹ Relative importance figures are based on 2014 trade values.

NOTES: Data may be revised in each of the 3 months after original publication.

Dash = Not available

Table 7. U.S. import price indexes and percent changes by locality of origin: October 2015 to October 2016
 [2000=100, unless otherwise noted]

Description	Relative importance Sept. 2016 ¹	Index		Percent change				
		Sept. 2016	Oct. 2016	Annual	Monthly			
				Oct. 2015 to Oct. 2016	June 2016 to July 2016	July 2016 to Aug. 2016	Aug. 2016 to Sept. 2016	Sept. 2016 to Oct. 2016
Industrialized Countries²	100.000	117.0	117.5	0.3	0.0	-0.4	0.1	0.4
Nonmanufacturing.....	7.414	120.1	126.1	3.0	-2.6	-2.8	0.3	5.0
Manufacturing.....	92.130	116.3	116.4	0.0	0.2	-0.3	0.1	0.1
Other Countries³	100.000	117.8	118.5	-0.9	-0.3	-0.3	0.1	0.6
Nonmanufacturing.....	8.737	174.5	183.2	2.1	1.2	-3.1	1.6	5.0
Manufacturing.....	91.011	102.6	102.7	-1.2	-0.3	-0.2	0.0	0.1
Canada	100.000	118.5	120.2	1.5	-0.1	-1.3	0.1	1.4
Nonmanufacturing.....	21.225	114.2	120.5	3.1	-2.8	-2.8	0.2	5.5
Manufacturing.....	77.974	123.7	124.2	1.0	0.6	-1.0	0.2	0.4
European Union⁴	100.000	131.2	131.5	-1.1	-0.4	-0.4	0.1	0.2
Manufacturing.....	99.526	127.9	128.1	-1.2	-0.4	-0.4	0.2	0.2
France (Dec. 2003=100)	100.000	122.4	122.4	0.7	0.0	-0.2	0.0	0.0
Germany (Dec. 2003=100)	100.000	112.9	112.2	-4.0	-0.1	-0.4	0.2	-0.6
United Kingdom (Dec. 2003=100)	100.000	117.7	117.4	-3.0	-0.1	0.1	-0.9	-0.3
Latin America⁵	100.000	139.6	140.6	-0.8	0.5	-0.5	0.1	0.7
Nonmanufacturing.....	16.754	199.4	207.6	3.1	2.0	-3.8	3.2	4.1
Manufacturing.....	82.748	119.2	119.2	-1.6	0.1	0.3	-0.5	0.0
Mexico (Dec. 2003=100)	100.000	125.9	126.0	-1.1	0.2	-0.6	0.0	0.1
Nonmanufacturing (Dec. 2008=100).....	9.086	114.8	114.9	5.3	13.3	-6.5	1.3	0.1
Manufacturing (Dec. 2008=100).....	90.453	88.1	88.1	-1.7	-1.0	0.0	0.0	0.0
Pacific Rim (Dec. 2003=100)⁶	100.000	98.6	98.6	-1.0	0.0	0.0	0.1	0.0
China (Dec. 2003=100)	100.000	100.7	100.7	-1.6	0.0	-0.2	-0.1	0.0
Japan	100.000	96.1	96.3	1.2	0.3	0.4	0.1	0.2
Asian NICs⁷	100.000	84.4	84.3	-1.9	-0.4	0.1	0.4	-0.1
ASEAN (Dec. 2003=100)⁸	100.000	96.9	97.0	-1.2	-0.4	-0.1	0.2	0.1
Asia Near East (Dec. 2003=100)⁹	100.000	143.4	149.5	1.2	0.3	-0.7	-0.4	4.3

¹ Relative importance figures are based on 2014 trade values.

² Western Europe, Canada, Japan, Australia, New Zealand and South Africa.

³ Eastern Europe, Latin America, OPEC countries, and other countries in Asia, Africa and the Western Hemisphere.

⁴ European Union countries.

⁵ Mexico, Central America, South America and the Caribbean.

⁶ China, Japan, Australia, Brunei, Indonesia, Macao, Malaysia, New Zealand, Papua New Guinea, Philippines and the Asian Newly Industrialized Countries.

⁷ Asian Newly Industrialized Countries - Hong Kong, Singapore, South Korea and Taiwan.

⁸ Association of Southeast Asian Nations - Brunei, Cambodia, Indonesia, Laos, Malaysia, Myanmar, Philippines, Singapore, Thailand and Vietnam.

⁹ Bahrain, Iran, Iraq, Israel, Jordan, Kuwait, Lebanon, Oman, Qatar, Saudi Arabia, Syria, United Arab Emirates and Yemen.

NOTES: Data may be revised in each of the 3 months after original publication.

Regions are not mutually exclusive.

Dash = Not available

Table 8. U.S. international price indexes and percent changes for selected transportation services: October 2015 to October 2016

[2000=100, unless otherwise noted]

Description	Relative importance Sept. 2016 ¹	Index		Percent change				
		Sept. 2016	Oct. 2016	Annual	Monthly			
				Oct. 2015 to Oct. 2016	June 2016 to July 2016	July 2016 to Aug. 2016	Aug. 2016 to Sept. 2016	Sept. 2016 to Oct. 2016
Air Freight								
Import Air Freight	100.000	153.0	159.1	-4.2	0.9	1.6	1.2	4.0
Europe (Dec. 2003=100).....	23.483	137.0	137.4	-6.6	-0.3	-1.3	0.9	0.3
Asia.....	62.647	136.3	144.9	-3.7	1.7	3.1	1.5	6.3
Export Air Freight	100.000	153.4	154.4	-1.1	-0.2	0.1	0.0	0.7
Europe (Dec. 2006=100).....	37.847	145.5	145.5	-2.3	0.0	0.0	0.0	0.0
Inbound Air Freight	100.000	146.3	152.7	-1.4	0.6	1.3	1.2	4.4
Europe (Dec. 2003=100).....	28.155	134.5	135.0	-2.0	-0.4	-0.5	0.2	0.4
Asia.....	57.420	129.8	139.5	-0.6	1.5	2.5	2.0	7.5
Outbound Air Freight	100.000	136.9	135.6	-6.9	-0.6	-0.3	0.1	-0.9
Europe (Dec. 2003=100).....	33.102	142.9	143.0	-9.7	0.4	0.4	0.6	0.1
Asia.....	42.890	128.2	125.3	-8.8	-1.4	-1.0	-0.2	-2.3
Air Passenger Fares								
Import Air Passenger Fares	100.000	177.8	189.0	0.2	-3.9	-6.0	4.2	6.3
Europe.....	44.436	206.5	220.7	-0.3	-8.4	-8.5	10.0	6.9
Asia.....	22.222	125.3	131.3	-7.7	-3.1	-7.2	-5.6	4.8
Latin America/Caribbean.....	9.277	148.3	154.5	3.7	3.0	0.2	-5.7	4.2
Export Air Passenger Fares	100.000	146.3	149.1	-3.6	2.8	4.6	-11.1	1.9
Europe.....	30.999	193.9	199.0	-3.6	-3.3	-6.2	0.5	2.6
Asia.....	27.770	125.0	126.5	-5.7	1.3	22.4	-24.7	1.2
Latin America/Caribbean.....	23.523	153.9	160.0	5.1	8.6	-1.9	-5.8	4.0

¹ Relative importance figures are based on 2014 trade values.

NOTES: Data may be revised in each of the 3 months after original publication.

Dash = Not available

TECHNICAL NOTE

Import and Export Merchandise and Services Price Indexes - All indexes use a modified Laspeyres formula and are not seasonally adjusted. Price indexes are reweighted annually, with a 2-year lag in the weights. Published series use a base year of 2000=100 where possible. More detailed index series and additional information may be obtained at www.bls.gov/mxp or by calling (202) 691-7101.

Merchandise Goods Classification Systems - The merchandise price indexes are published using three classification systems. Items are classified by end use according to the Bureau of Economic Analysis Classification System, by industry according to the North American Industry Classification System (NAICS), and by product category according to the Harmonized System (HS). While classification by end use and product category are self-explanatory, some notes are in order for classifying items by industry. In the NAICS imports and exports tables, items are classified by output industry, not input industry. As an example, NAICS import index 326 (plastics and rubber products manufacturing) include outputs such as manufactured plastic rather than inputs such as petroleum. The NAICS classification structure also matches the classification system used by the Producer Price Index (PPI) to produce the NAICS primary products indexes.

Import Price Indexes - Products have been classified by the Harmonized Tariff Schedule of the United States Annotated (TSUSA). Import prices are based on U.S. dollar prices paid by the U.S. importer. The prices are generally either "free on board" (f.o.b.) foreign port or "cost, insurance, and freight" (c.i.f.) U.S. port transaction prices, depending on the practices of the individual industry. The index for crude petroleum is calculated from data collected by the U.S. Department of Energy.

Export Price Indexes - Products have been classified by the Harmonized Schedule B classification system of the U.S. Bureau of the Census. The prices used are generally either "free alongside ship" (f.a.s.) factory or "free on board" (f.o.b.) transaction prices, depending on the practices of the individual industry. Prices used in the grain index, excluding rice, are obtained from the U.S. Department of Agriculture.

Services Price Indexes - Starting in September 2008, the import air passenger fares indexes represent changes in the average revenue per passenger received by foreign carriers from U.S. residents and are calculated from data obtained from an airline consulting service. These data include tickets sold by travel agencies and travel websites. Tickets sold directly by the airlines are excluded, as are frequent flyer tickets generally. Starting in January 2008, the export air passenger fares indexes represent changes in the average revenue per passenger received by U.S. carriers from foreign residents and are calculated from data collected directly from airlines. These data include frequent flyer tickets and those sold by consolidators. Taxes and fees are included in the import air passenger fares indexes and excluded from the export air passenger fares indexes. The air freight indexes are calculated from data collected directly from airlines. These data exclude mail and passenger baggage. The scope of the service being priced is the movement of freight from airport to airport only, and does not include any ground transportation or port service. The air freight indexes are presented using two definitions: balance of payments (which represent transactions between U.S. and foreign residents) and international (which represent transactions inbound to and outbound from the U.S.). Fact sheets specifying detailed information for each services industry are available at www.bls.gov/mxp under "MXP Publications."

Import Indexes by Locality of Origin - Prices used in these indexes are a subset of the data collected for the import price indexes. Beginning with January 2002, the indexes are defined by locality of origin using a nomenclature based upon the North American Industry Classification System (NAICS). Nonmanufactured goods are defined as NAICS 11 and 21, and manufactured goods are defined as NAICS 31-33.

Revision Policy - To reflect the availability of late reports and corrections by respondents, monthly data may be revised in each of the 3 months after original publication. After 3 months, no further data revisions take place. For example, data first published in the January release will be subject to revision in the releases for February, March, and April.

Uses of the Data - The primary use of the indexes is to deflate trade statistics, notably the foreign trade sector of the National Income and Product Accounts (NIPA) constructed by the Department of Commerce. Other published indexes are useful for general market analysis. For trade in international services, balance of payments indexes are used for deflating NIPA, while international indexes are more appropriate for market analysis. Merchandise and services indexes also can be used to study U.S. competitiveness and to compute price elasticities, and the merchandise import indexes by country or region of origin are useful in terms of trade analysis.

Email Subscription - The U.S. import and export price indexes news release is available through an email subscription service at www.bls.gov/bls/list.htm.

Additional Information - More detailed data are available on the Import/Export Price Indexes home page at www.bls.gov/mxp. For import and export price indexes data requests, send an email to mxpinfo@bls.gov.

Information from this release will be made available to sensory impaired individuals upon request. Voice phone: (202)-691-5200; Federal Relay Service: 1-(800)-877-8339.