



**Transmission of material in this release is embargoed until
 8:30 a.m. (EST) Thursday, November 16, 2017**

USDL-17-1505

Technical information: (202) 691-7101 • MXPinfo@bls.gov • www.bls.gov/mxp
 Media contact: (202) 691-5902 • PressOffice@bls.gov

U.S. IMPORT AND EXPORT PRICE INDEXES – OCTOBER 2017

U.S. import prices advanced 0.2 percent in October, the U.S. Bureau of Labor Statistics reported today, after increasing 0.8 percent in September. U.S. export prices recorded no change in October, after increasing 0.7 percent in September.

Chart 1. One-month percent change in the Import Price Index: October 2016 – October 2017

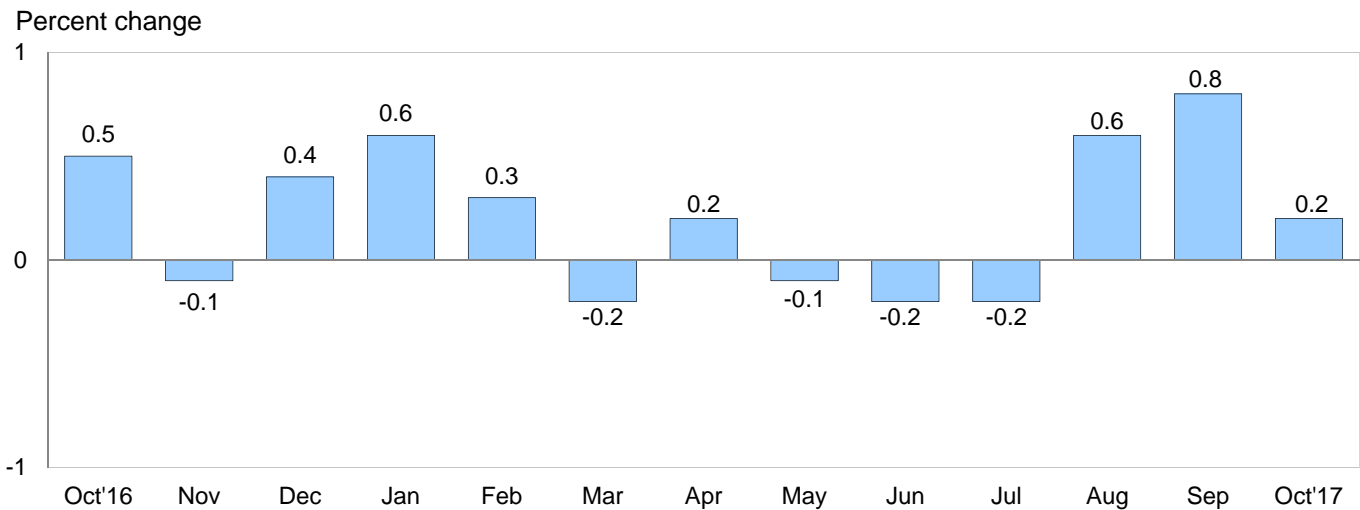
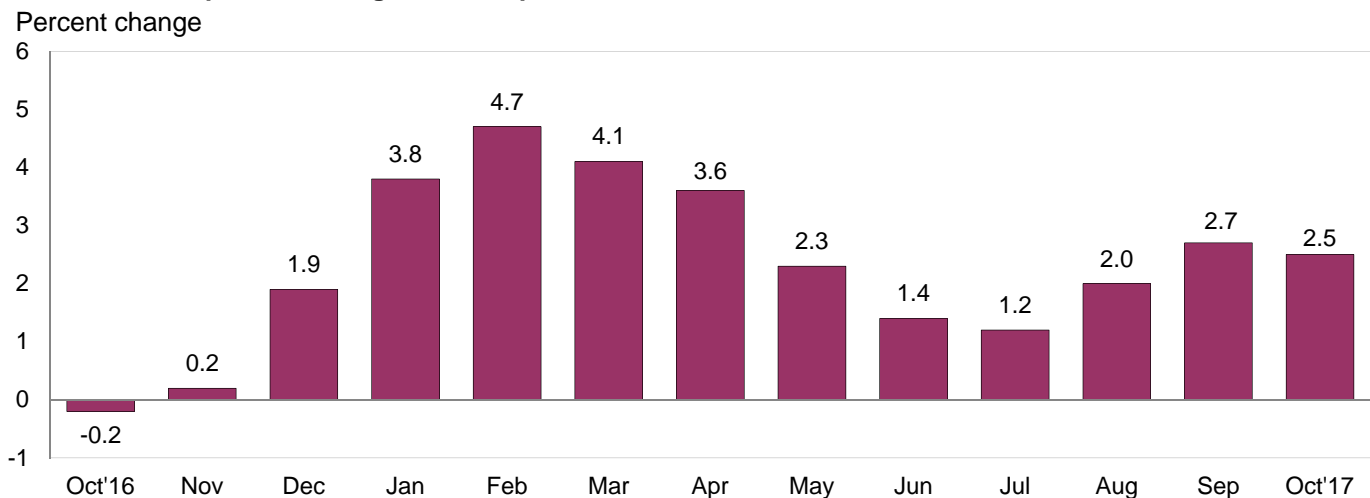


Chart 2. 12-month percent change in the Import Price Index: October 2016 – October 2017



Hurricane Maria: Hurricane Maria had an impact on the collection of the import and export price index data from Puerto Rico for October, but no change in the estimation procedures. For more information on the impact, please see <https://www.bls.gov/bls/hurricanes-harvey-irma-maria.htm>.

All Imports: Import prices increased 0.2 percent in October, after rising 0.8 percent in September. The price index for all imports rose 1.6 percent over the past 3 months. Higher prices for fuel and nonfuel imports contributed to the overall rise in import prices for October. U.S. import prices increased 2.5 percent for the year ended in October.

Fuel Imports: The price index for fuel imports advanced 1.4 percent in October following a 5.5-percent rise in September. Fuel import prices increased 11.1 percent over the past 3 months. The October increase was driven by higher petroleum prices which advanced 1.7 percent, more than offsetting a 6.7-percent drop in natural gas prices. Fuel import prices rose 13.2 percent over the past 12 months; petroleum prices were the primary contributor, advancing 14.9 percent. Import prices for natural gas fell 18.2 percent over the past year.

All Imports Excluding Fuel: Prices for nonfuel imports rose 0.2 percent in October following a 0.3-percent advance in September. The increase in October was driven by nonfuel industrial supplies and materials prices which advanced 0.9 percent; higher prices for capital goods also contributed to the overall increase. Import prices for automotive vehicles; consumer goods; and foods, feeds, and beverages all declined in October limiting the monthly advance. The price index for nonfuel imports rose 1.4 percent over the past 12 months, the largest over-the-year increase since a 2.0-percent advance for the year ended March 2012.

Table A. Percent change in Import and Export Price Indexes, selected categories

Month	IMPORTS			EXPORTS		
	All imports	Fuel imports	Nonfuel imports	All exports	Agricultural exports	Non-agricultural exports
2016						
October.....	0.5	6.6	0.0	0.2	0.5	0.2
November.....	-0.1	-1.1	-0.1	0.1	0.7	0.0
December.....	0.4	5.8	0.0	0.4	-0.2	0.4
2017						
January.....	0.6	6.1	-0.1	0.2	0.4	0.2
February.....	0.3	0.3	0.3	0.3	1.4	0.3
March.....	-0.2	-3.0	0.2	0.1	1.1	0.0
April.....	0.2	-0.4	0.3	0.2	0.1	0.3
May.....	-0.1	-0.9	0.1	-0.6	-1.6	-0.4
June.....	-0.2	-3.6	0.1	-0.1	-1.4	0.0
July.....	-0.2 ^r	-1.0 ^r	-0.1	0.5	1.8 ^r	0.3
August.....	0.6	3.9 ^r	0.3	0.7	0.1	0.8
September.....	0.8 ^r	5.5 ^r	0.3	0.7 ^r	-0.7	0.9 ^r
October.....	0.2	1.4	0.2	0.0	1.9	-0.3
Oct. 2015 to 2016.....	-0.2	3.1	-0.3	-1.1	-2.7	-0.8
Oct. 2016 to 2017.....	2.5	13.2	1.4	2.7	3.5	2.5

r Revised

Chart 3. One-month percent change in the Export Price Index: October 2016 – October 2017

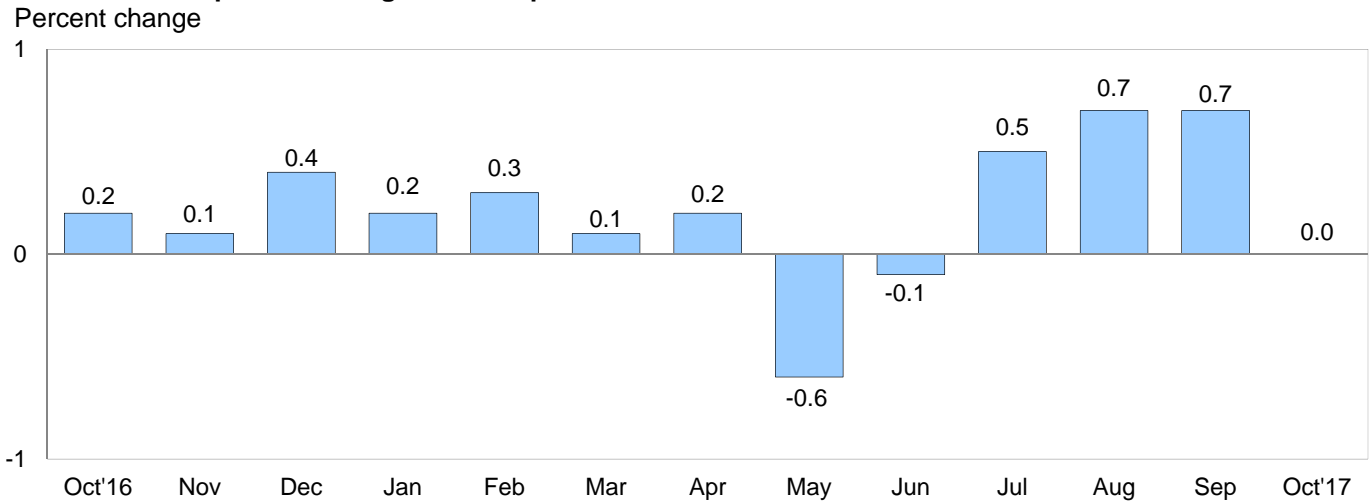
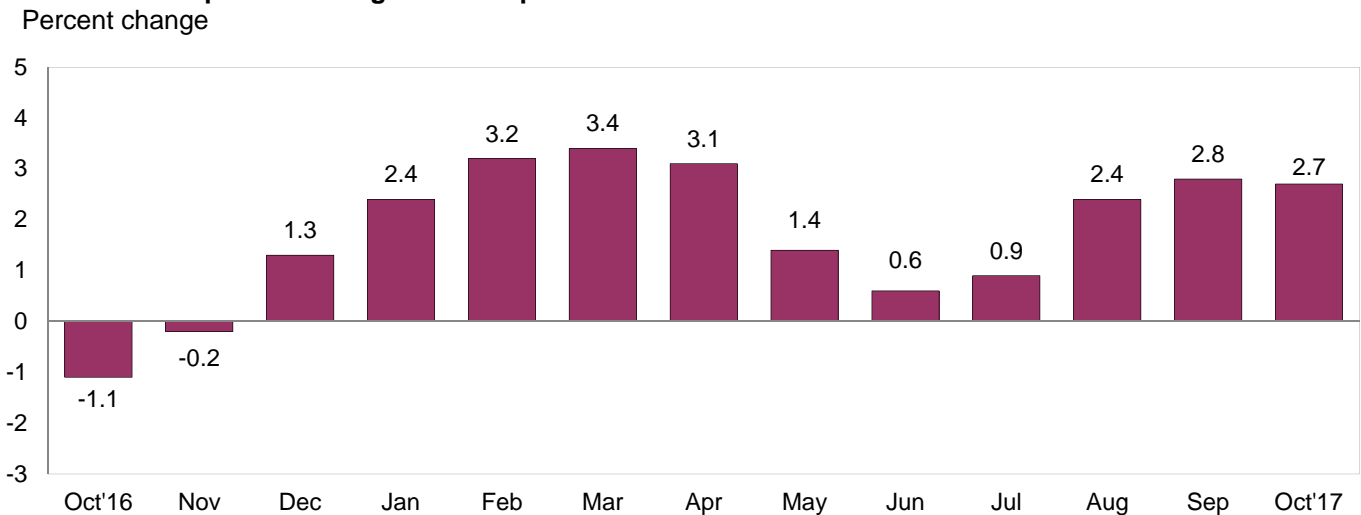


Chart 4. 12-month percent change in the Export Price Index: October 2016 – October 2017



All Exports: U.S. export prices recorded no change in October following 0.7-percent increases in September and August. The index has not recorded a decline since a 0.1-percent drop in June. Higher prices for agricultural exports were offset by lower prices for nonagricultural exports. The price index for exports advanced 2.7 percent over the past year.

Agricultural Exports: The price index for agricultural exports increased 1.9 percent in October, the largest monthly rise since a 2.5-percent advance in June 2016. Higher vegetable prices drove the October increase, more than offsetting lower prices for soybeans and meats. Agricultural export prices increased 3.5 percent over the past year. Increasing vegetable and meat prices were the primary contributors to the 12-month advance.

All Exports Excluding Agriculture: Nonagricultural export prices declined 0.3 percent in October following a 0.9-percent rise in September. In October, the index recorded the first monthly decline since a 0.4-percent decrease in May. Lower prices for nonagricultural industrial supplies and materials drove the decrease, and automotive prices also contributed to the overall decline. In contrast, capital goods and consumer goods prices increased in October. Despite the monthly decline in October, the price index for nonagricultural exports increased 2.5 percent over the past year. Higher nonagricultural industrial supplies and materials prices were the primary contributor to higher prices over the 12-month period.

SELECTED OCTOBER HIGHLIGHTS

Import Prices

Imports by Locality of Origin: Import prices from China recorded no change in October following a 0.3-percent decline in September. Over the past year prices from China fell 0.8 percent. The price index for imports from Japan fell 0.3 percent in October, after a 0.1-percent rise in September. Import prices from Japan decreased 0.8 percent over the past year, the largest 12-month decline since a 1.1-percent drop for the year ended in May 2016. Import prices from Canada rose 1.4 percent for the second consecutive month in October; those were the largest advances since a 2.0-percent rise in January. Import prices from the European Union rose 0.1 percent in October and prices for imports from Mexico fell 0.2 percent.

Nonfuel Industrial Supplies and Materials: Import prices for nonfuel industrial supplies and materials rose 0.9 percent in October following a 1.5-percent advance in September. The index increased 7.9 percent over the past 12 months, the largest over-the-year rise since an 8.1-percent advance in November 2011. Higher import prices for chemicals and selected building materials drove the October advance.

Finished Goods: Import prices for the major finished goods categories were mixed in October. The price index for capital goods rose 0.2 percent in October and recorded a 0.6-percent increase over the past year. Prices for automotive vehicles decreased 0.2 percent in October and consumer goods prices fell 0.1 percent.

Foods, Feeds, and Beverages: The import price index for foods, feeds, and beverages fell 0.2 percent in October. A 4.3-percent drop in prices for feedstuff and food grains and a 2.3-percent drop in vegetable prices were the main contributors to the decline.

Transportation Services: The index for import air passenger fares rose 8.8 percent in October following an 8.5-percent increase in September. The October advance was the largest monthly increase since the index rose 8.9 percent in June 2015. European air passenger fares rose 9.9 percent driving the overall advance. Despite the recent increases, import air passenger fares decreased 1.4 percent over the past year. The price index for import air freight fell 4.0 percent in October and recorded a 5.4-percent increase over the past 12 months.

Export Prices

Nonagricultural Industrial Supplies and Materials: Nonagricultural industrial supplies and materials export prices fell 1.1 percent in October, after increasing 2.8 percent in September. The October drop was the first decline since a 1.4-percent decrease in May. Lower prices for fuel and gold led the October decline.

Finished Goods: Export prices for capital goods rose 0.3 percent in October following a 0.1-percent advance the previous month. The October increase was driven by a 1.3-percent advance in the price index for computers, peripherals, and semiconductors. Export prices for automotive vehicles fell 0.2 percent in October and consumer goods prices ticked up 0.1 percent.

Transportation Services: Export air passenger fares increased 3.9 percent in October, driven by a 3.1-percent increase in European fares. The price index for export air passenger fares rose 2.3 percent over the past year. Export air freight prices advanced 3.0 percent in October and 5.4 percent over the past 12 months.

Import and Export Price Index data for November 2017 are scheduled for release on Thursday, December 14, 2017 at 8:30 a.m. (EST).

Table 1. U.S. import price indexes and percent changes for selected categories of goods: October 2016 to October 2017

[2000=100, unless otherwise noted]

Description	End Use	Relative importance Sept. 2017 ¹	Index		Percent change				
			Sept. 2017	Oct. 2017	Annual Oct. 2016 to Oct. 2017	Monthly			
						June 2017 to July 2017	July 2017 to Aug. 2017	Aug. 2017 to Sept. 2017	Sept. 2017 to Oct. 2017
All commodities		100.000	123.9	124.2	2.5	-0.2	0.6	0.8	0.2
All imports excluding food and fuels (Dec. 2010=100)		84.181	99.3	99.5	1.3	0.0	0.2	0.2	0.2
All imports excluding petroleum		91.137	112.5	112.6	1.4	-0.1	0.2	0.4	0.1
All imports excluding fuels (Dec. 2001=100)		90.579	116.6	116.8	1.4	-0.1	0.3	0.3	0.2
Foods, feeds, & beverages	0	6.300	185.6	185.2	3.1	-0.1	0.2	1.8	-0.2
Agricultural foods, feeds & beverages, excluding distilled beverages.....	00	4.974	205.3	204.2	3.7	0.0	0.4	2.3	-0.5
Nonagricultural foods (fish, distilled beverages).....	01	1.326	140.4	142.0	1.1	-0.4	-0.3	-0.4	1.1
Industrial supplies & materials	1	23.136	174.3	176.2	10.1	-0.6	2.1	3.1	1.1
Industrial supplies & materials excluding petroleum.....		14.449	150.1	151.0	7.1	-0.7	0.8	1.2	0.6
Industrial supplies & materials excluding fuels (Dec. 2001=100).....		13.749	171.3	172.8	7.9	-0.4	1.0	1.5	0.9
Industrial supplies & materials, durable....		8.677	164.1	164.5	10.1	-0.2	1.5	2.1	0.2
Industrial supplies & materials nondurable excluding petroleum.....		5.597	132.5	134.1	2.8	-1.4	-0.3	-0.2	1.2
Fuels & lubricants.....	10	9.421	180.6	183.1	13.2	-1.0	3.9	5.5	1.4
Petroleum & petroleum products.....	100	8.863	197.0	200.4	14.9	-0.6	4.4	6.3	1.7
Crude.....	10000	6.170	198.1	208.0	16.8	0.9	3.5	5.3	5.0
Fuels, n.e.s.-coals & gas.....	101	0.406	85.9	80.9	-13.8	-7.2	-4.2	-6.4	-5.8
Gas-natural.....	10110	0.306	68.7	64.1	-18.2	-3.1	-5.9	-7.9	-6.7
Paper & paper base stocks.....	11	0.542	107.6	108.4	3.2	0.7	-0.3	-0.1	0.7
Materials associated with nondurable supplies & materials.....	12	4.564	153.5	156.5	4.5	-0.9	0.1	0.6	2.0
Selected building materials.....	13	1.478	149.4	152.6	11.1	1.1	1.9	-0.5	2.1
Unfinished metals related to durable goods.....	14	3.670	226.1	224.3	14.6	-1.4	2.5	4.4	-0.8
Finished metals related to durable goods.....	15	1.776	155.0	156.1	8.6	0.5	0.7	1.8	0.7
Nonmetals related to durable goods.....	16	1.685	109.9	110.4	2.3	0.6	0.1	-0.1	0.5
Capital goods	2	27.304	89.2	89.4	0.6	0.1	0.1	0.0	0.2
Electric generating equipment.....	20	3.299	117.0	117.1	1.2	0.3	0.2	0.2	0.1
Nonelectrical machinery.....	21	21.457	81.7	81.8	0.6	0.2	0.1	-0.1	0.1
Transportation equipment excluding motor vehicles (Dec. 2001=100).....	22	2.548	135.0	135.6	-0.5	-0.1	0.3	0.2	0.4
Automotive vehicles, parts & engines	3	16.118	110.3	110.1	-0.5	-0.3	0.1	0.1	-0.2
Consumer goods, excluding automobiles	4	27.142	106.9	106.8	-0.1	0.0	0.1	-0.1	-0.1
Nondurables, manufactured.....	40	13.330	121.5	121.4	1.5	-0.2	0.0	0.0	-0.1
Durables, manufactured.....	41	12.513	93.1	93.0	-1.3	0.1	0.1	-0.1	-0.1
Nonmanufactured consumer goods.....	42	1.299	114.6	114.9	-3.1	-0.1	-0.4	0.2	0.3

¹ Relative importance figures are based on 2015 trade values.

NOTES: Data may be revised in each of the 3 months after original publication.

Dash = Not available

Table 2. U.S. export price indexes and percent changes for selected categories of goods: October 2016 to October 2017

[2000=100, unless otherwise noted]

Description	End Use	Relative importance Sept. 2017 ¹	Index		Percent change				
			Sept. 2017	Oct. 2017	Annual Oct. 2016 to Oct. 2017	Monthly			
						June 2017 to July 2017	July 2017 to Aug. 2017	Aug. 2017 to Sept. 2017	Sept. 2017 to Oct. 2017
All commodities.....		100.000	123.9	123.9	2.7	0.5	0.7	0.7	0.0
Agricultural commodities.....		9.263	177.0	180.3	3.5	1.8	0.1	-0.7	1.9
All exports excluding food and fuels (Dec. 2010=100).....		82.830	99.6	99.7	1.5	0.2	0.3	0.4	0.1
Nonagricultural commodities.....		90.737	119.9	119.6	2.5	0.3	0.8	0.9	-0.3
Foods, feeds, & beverages.....	0	8.635	179.4	183.3	4.2	2.2	0.1	-0.6	2.2
Agricultural foods, feeds & beverages, excluding distilled beverages.....	00	8.015	178.3	182.2	4.1	2.0	0.1	-0.7	2.2
Nonagricultural foods (fish, distilled beverages).....	01	0.620	201.9	206.5	6.8	3.8	0.5	0.5	2.3
Industrial supplies & materials.....	1	30.535	152.9	151.4	5.8	0.6	1.8	2.7	-1.0
Industrial supplies & materials, durable....		10.786	162.6	161.6	5.3	-0.5	1.3	2.5	-0.6
Industrial supplies & materials, nondurable.....		19.776	148.5	146.7	6.1	1.3	2.0	2.7	-1.2
Agricultural industrial supplies & materials.....	10	1.248	173.7	174.0	-0.1	0.5	-0.4	-0.4	0.2
Nonagricultural industrial supplies & materials.....		29.287	152.3	150.7	6.1	0.6	1.9	2.8	-1.1
Fuels & lubricants.....	11	8.562	181.5	175.8	13.2	1.6	5.0	5.9	-3.1
Nonagricultural supplies & materials excluding fuels & building materials....	12	19.692	154.2	153.7	3.4	0.3	0.7	1.6	-0.3
Selected building materials.....	13	1.034	121.5	123.6	6.0	0.1	0.9	0.5	1.7
Capital goods.....	2	37.904	108.1	108.4	1.6	0.2	0.1	0.1	0.3
Electrical generating equipment.....	20	3.924	113.2	113.0	1.0	0.3	0.2	0.1	-0.2
Nonelectrical machinery.....	21	24.786	94.1	94.5	0.9	0.2	0.2	0.0	0.4
Transportation equipment excluding motor vehicles (Dec. 2001=100).....	22	9.193	171.2	171.5	3.9	0.2	0.1	0.1	0.2
Automotive vehicles, parts & engines.....	3	10.209	113.4	113.2	0.4	0.0	0.1	0.1	-0.2
Consumer goods, excluding automotives.....	4	12.717	109.2	109.3	-0.7	0.4	0.3	0.0	0.1
Nondurables, manufactured.....	40	6.170	105.3	105.5	-0.7	0.7	0.2	0.1	0.2
Durables, manufactured.....	41	5.163	107.7	107.6	0.2	0.3	0.3	-0.1	-0.1

¹ Relative importance figures are based on 2015 trade values.

NOTES: Data may be revised in each of the 3 months after original publication.

Dash = Not available

Table 3. U.S. import price indexes and percent changes for selected industries: October 2016 to October 2017
 [December 2005=100, unless otherwise noted]

Description	NAICS	Relative importance Sept. 2017 ¹	Index		Percent change				
			Sept. 2017	Oct. 2017	Annual Oct. 2016 to Oct. 2017	Monthly			
						June 2017 to July 2017	July 2017 to Aug. 2017	Aug. 2017 to Sept. 2017	Sept. 2017 to Oct. 2017
Nonmanufacturing		8.917	99.2	102.2	13.1	0.1	2.4	4.5	3.0
Agriculture, forestry, fishing and hunting	11	2.166	196.3	193.4	5.9	-0.9	0.6	4.9	-1.5
Crop production.....	111	1.767	214.2	211.7	5.9	-0.8	0.5	6.5	-1.2
Animal production (Dec. 2014=100).....	112	0.195	75.5	73.2	1.4	-1.0	-0.1	-6.6	-3.0
Mining	21	6.750	87.6	91.6	15.4	0.4	2.9	4.4	4.6
Oil and gas extraction.....	211	6.472	87.1	91.1	15.2	0.6	3.1	4.7	4.6
Mining (except oil and gas) (Dec. 2006=100).....	212	0.279	111.0	116.1	21.4	-4.5	-1.3	-1.0	4.6
Manufacturing		90.783	110.7	110.6	1.5	-0.2	0.4	0.5	-0.1
Manufacturing, part 1	31	11.881	124.7	124.7	0.7	0.0	0.2	0.1	0.0
Food manufacturing.....	311	3.488	157.0	157.4	2.5	0.0	0.1	0.1	0.3
Beverage and tobacco product manufacturing.....	312	1.060	119.2	119.5	1.1	0.3	-0.1	0.3	0.3
Textile mills (Dec. 2011=100).....	313	0.399	99.0	99.1	1.4	0.1	0.2	0.5	0.1
Textile product mills.....	314	0.931	109.3	109.4	0.4	0.4	0.0	0.3	0.1
Apparel manufacturing.....	315	4.177	111.2	111.1	-0.1	0.1	0.1	0.1	-0.1
Leather and allied product manufacturing.....	316	1.826	122.6	122.6	-0.3	-0.2	0.0	-0.2	0.0
Manufacturing, part 2	32	17.621	121.9	121.6	4.6	-0.6	0.8	1.2	-0.2
Wood product manufacturing.....	321	0.920	131.3	135.4	17.0	1.7	3.0	-0.8	3.1
Paper manufacturing.....	322	1.019	105.3	105.7	1.6	0.4	-0.1	-0.1	0.4
Printing and related support activities (Dec. 2016=100).....	323	0.218	98.9	99.0	-	0.0	-1.3	0.2	0.1
Petroleum and coal products manufacturing.....	324	2.434	90.1	83.9	8.3	-4.2	6.4	8.6	-6.9
Chemical manufacturing.....	325	9.805	135.1	136.3	4.4	-0.4	-0.1	0.1	0.9
Plastics and rubber products manufacturing.....	326	2.226	118.4	118.3	0.9	0.4	0.2	-0.1	-0.1
Nonmetallic mineral product manufacturing.....	327	0.999	128.2	128.9	-0.3	-0.2	0.2	-0.1	0.5
Manufacturing, part 3	33	61.282	104.2	104.2	0.8	0.0	0.3	0.3	0.0
Primary metal manufacturing.....	331	4.366	149.1	148.6	14.4	-0.7	1.7	3.9	-0.3
Fabricated metal product manufacturing... ..	332	3.129	125.0	125.7	3.3	0.4	0.5	1.0	0.6
Machinery manufacturing.....	333	7.109	117.8	117.9	1.2	0.1	0.7	0.3	0.1
Computer and electronic product manufacturing.....	334	17.402	75.6	75.7	-0.8	0.1	0.0	-0.5	0.1
Electrical equipment, appliance, and component manufacturing.....	335	4.896	115.2	115.2	0.3	0.3	0.1	0.2	0.0
Transportation equipment manufacturing..	336	17.361	109.4	109.3	-0.5	-0.2	0.1	0.1	-0.1
Furniture and related product manufacturing.....	337	1.724	115.7	115.8	0.8	0.1	0.2	0.1	0.1
Miscellaneous manufacturing.....	339	5.295	117.9	117.7	-1.3	0.0	0.2	0.2	-0.2

¹ Relative importance figures are based on 2015 trade values.

NOTES: Data may be revised in each of the 3 months after original publication.

Dash = Not available

Table 4. U.S. export price indexes and percent changes for selected industries: October 2016 to October 2017
 [December 2005=100, unless otherwise noted]

Description	NAICS	Relative importance Sept. 2017 ¹	Index		Percent change				
			Sept. 2017	Oct. 2017	Annual Oct. 2016 to Oct. 2017	Monthly			
						June 2017 to July 2017	July 2017 to Aug. 2017	Aug. 2017 to Sept. 2017	Sept. 2017 to Oct. 2017
Nonmanufacturing.....		7.330	132.8	137.5	12.2	4.7	-1.6	0.3	3.5
Agriculture, forestry, fishing and hunting.....	11	4.422	150.8	156.7	4.0	3.2	-0.7	-0.9	3.9
Crop production.....	111	4.157	156.5	162.7	3.9	3.2	-0.8	-1.0	4.0
Mining.....	21	2.908	85.2	87.7	27.7	7.1	-2.9	2.3	2.9
Mining (except oil and gas).....	212	1.272	106.8	107.7	30.5	1.7	1.3	3.0	0.8
Manufacturing.....		91.087	113.9	113.7	2.0	0.2	0.7	0.8	-0.2
Manufacturing, part 1.....	31	7.055	139.0	139.0	2.8	0.7	0.4	-0.4	0.0
Food manufacturing.....	311	4.758	158.0	158.2	4.0	0.7	0.6	-0.5	0.1
Beverage and tobacco product manufacturing.....	312	0.713	114.6	114.1	2.1	2.9	-0.1	0.6	-0.4
Textile mills (Dec. 2016=100).....	313	0.663	101.1	101.1	-	-0.3	-0.1	0.3	0.0
Leather and allied product manufacturing (Dec. 2016=100).....	316	0.273	96.3	95.6	-	-0.4	-1.6	-0.5	-0.7
Manufacturing, part 2.....	32	24.487	111.4	110.7	3.4	0.6	2.2	2.4	-0.6
Paper manufacturing.....	322	1.669	121.6	127.0	7.0	2.4	0.2	0.6	4.4
Petroleum and coal products manufacturing.....	324	5.816	106.4	100.9	9.3	-0.8	9.5	8.2	-5.2
Chemical manufacturing.....	325	13.128	114.6	115.2	1.2	1.0	0.2	0.8	0.5
Plastics and rubber products manufacturing.....	326	2.268	114.4	114.3	0.6	-0.3	0.4	0.1	-0.1
Nonmetallic mineral product manufacturing.....	327	0.840	114.3	114.8	2.0	0.1	0.1	0.6	0.4
Manufacturing, part 3.....	33	59.545	112.5	112.5	1.4	0.0	0.3	0.3	0.0
Primary metal manufacturing.....	331	4.106	142.2	139.1	2.8	-1.8	1.9	3.4	-2.2
Fabricated metal product manufacturing..	332	3.276	138.2	138.3	6.1	-0.1	0.1	0.0	0.1
Machinery manufacturing.....	333	10.182	126.2	126.2	0.2	0.2	0.2	0.2	0.0
Computer and electronic product manufacturing.....	334	13.984	82.7	83.3	0.6	0.1	0.0	-0.1	0.7
Electrical equipment, appliance, and component manufacturing.....	335	3.950	113.7	113.8	1.5	0.4	0.2	0.0	0.1
Transportation equipment manufacturing..	336	18.298	124.7	124.7	2.0	0.1	0.1	0.1	0.0
Furniture and related product manufacturing (Dec. 2011=100).....	337	0.448	117.4	117.4	-0.5	-0.1	0.0	0.0	0.0
Miscellaneous manufacturing.....	339	5.300	119.4	119.3	-0.3	0.3	0.3	0.2	-0.1

¹ Relative importance figures are based on 2015 trade values.

NOTES: Data may be revised in each of the 3 months after original publication.

Dash = Not available

Table 5. U.S. import price indexes and percent changes for selected categories of goods: October 2016 to October 2017

[2000=100, unless otherwise noted]

Description	Harmoni- zied system	Relative importance Sept. 2017 ¹	Index		Percent change				
			Sept. 2017	Oct. 2017	Annual	Monthly			
					Oct. 2016 to Oct. 2017	June 2017 to July 2017	July 2017 to Aug. 2017	Aug. 2017 to Sept. 2017	Sept. 2017 to Oct. 2017
Live animals; animal products.....	I	1.470	191.7	192.3	2.1	-0.9	-1.0	-1.4	0.3
Meat and edible meat offal.....	02	0.444	246.6	250.9	6.8	-1.1	-2.5	0.3	1.7
Fish and crustaceans, molluscs and other aquatic invertebrates.....	03	0.723	139.4	140.6	-2.6	-1.5	-1.0	-0.6	0.9
Vegetable products.....	II	2.221	235.1	233.1	5.0	-1.1	0.7	6.1	-0.9
Edible vegetables, roots, and tubers.....	07	0.408	468.5	454.1	-9.8	-0.9	-1.9	3.0	-3.1
Edible fruit and nuts; peel of citrus fruit or melons.....	08	1.016	152.0	151.5	18.9	-2.7	2.1	13.5	-0.3
Coffee, tea, mate and spices.....	09	0.353	229.4	225.1	-3.9	2.6	0.3	-1.7	-1.9
Animal or vegetable fats and oils (Dec. 2009=100).....	III	0.307	118.4	116.4	5.9	0.1	1.0	1.7	-1.7
Prepared foodstuffs, beverages, and tobacco.....	IV	2.707	162.8	162.7	1.2	0.6	0.6	0.2	-0.1
Sugars and sugar confectionary (Dec. 2012=100).....	17	0.185	86.8	88.0	0.9	0.1	-0.8	0.9	1.4
Cocoa and cocoa preparations (Dec. 2009=100).....	18	0.192	95.0	96.2	-13.4	-1.7	0.7	-0.5	1.3
Preparations of vegetables, fruit, nuts, or other parts of plants.....	20	0.363	170.4	172.1	6.7	1.9	0.4	1.0	1.0
Beverages, spirits, and vinegar.....	22	1.000	128.9	129.1	0.9	0.2	-0.1	0.3	0.2
Mineral products.....	V	9.309	180.3	183.2	13.7	-1.0	3.8	5.3	1.6
Mineral fuels, oils and residuals, bituminous substances and mineral waxes.....	27	9.051	177.9	180.2	13.5	-1.0	4.0	5.5	1.3
Products of the chemical or allied industries.....	VI	9.233	151.4	152.5	4.2	-0.3	-0.1	0.0	0.7
Inorganic chemicals.....	28	0.520	259.9	273.8	9.7	-1.1	-2.2	-4.0	5.3
Organic chemicals.....	29	2.421	124.6	125.6	4.2	-0.4	0.2	1.1	0.8
Pharmaceutical products.....	30	4.354	148.3	148.0	4.1	-0.4	0.0	-0.2	-0.2
Fertilizers (Dec. 2009=100).....	31	0.252	71.0	78.7	12.1	-1.2	-3.2	1.3	10.8
Tanning extracts; dye, pigments, varnish, paints & putty (Dec. 2011=100).....	32	0.192	106.6	106.2	3.6	0.4	-0.1	-2.1	-0.4
Essential oils and resinoids (Dec. 2016=100).....	33	0.562	102.4	102.8	-	1.4	0.7	1.0	0.4
Miscellaneous chemical products.....	38	0.696	105.1	105.2	3.2	1.0	0.1	0.1	0.1
Plastics and articles thereof; rubber and articles thereof.....	VII	3.433	140.2	140.6	2.3	-0.1	0.4	0.3	0.3
Plastics and articles thereof.....	39	2.183	142.2	143.0	1.8	0.4	0.2	0.2	0.6
Rubber and articles thereof.....	40	1.250	138.0	137.7	3.1	-1.2	0.7	0.4	-0.2
Raw hides, skins, leather, furskins, travel goods, etc.....	VIII	0.683	124.1	124.1	0.6	0.1	0.0	0.3	0.0
Articles of leather; travel goods, bags, etc. of various materials.....	42	0.653	129.4	129.5	0.6	0.2	0.0	0.3	0.1
Wood, wood charcoal, cork, straw, basketware and wickerwork.....	IX	0.957	160.0	164.8	17.0	1.6	2.8	-0.7	3.0
Wood and articles of wood; wood charcoal (Dec. 2014=100).....	44	0.932	110.4	113.7	17.3	1.6	2.9	-0.6	3.0
Woodpulp, recovered paper, and paper products.....	X	1.080	110.3	110.8	1.8	0.3	-0.5	0.0	0.5
Paper and paperboard; articles of paper pulp, paper or paperboard.....	48	0.713	102.9	103.0	-0.5	-0.1	0.1	-0.1	0.1
Printed matter (Dec. 2015=100).....	49	0.216	104.7	104.9	2.3	0.1	-1.5	0.2	0.2
Textile and textile articles.....	XI	5.325	113.5	113.5	0.3	0.1	0.2	0.1	0.0

See footnotes at end of table.

Table 5. U.S. import price indexes and percent changes for selected categories of goods: October 2016 to October 2017 — Continued
 [2000=100, unless otherwise noted]

Description	Harmonized system	Relative importance Sept. 2017 ¹	Index		Percent change				
			Sept. 2017	Oct. 2017	Annual	Monthly			
					Oct. 2016 to Oct. 2017	June 2017 to July 2017	July 2017 to Aug. 2017	Aug. 2017 to Sept. 2017	Sept. 2017 to Oct. 2017
Articles of apparel and clothing accessories, knitted or crocheted.....	61	2.187	103.9	103.8	0.1	0.2	0.3	-0.1	-0.1
Articles of apparel and clothing accessories, not knitted or crocheted.....	62	1.819	119.0	118.9	-0.3	0.0	0.0	0.1	-0.1
Made-up or worn textile articles.....	63	0.648	103.9	103.9	0.6	0.0	0.0	0.2	0.0
Headgear, umbrellas, artificial flowers, etc.....	XII	1.502	121.7	121.6	-0.7	-0.3	-0.1	-0.1	-0.1
Footwear and parts of such articles.....	64	1.272	120.8	120.7	-0.7	-0.4	0.1	-0.2	-0.1
Stone, plaster, cement, asbestos, ceramics, glass etc.....	XIII	0.938	130.5	130.9	0.1	-0.2	0.4	0.2	0.3
Articles of stone, plaster, cement, asbestos, or mica (Dec. 2015=100).....	68	0.324	96.7	97.2	-0.6	0.1	0.0	0.1	0.5
Ceramic products.....	69	0.269	135.9	136.4	-0.5	-0.7	0.4	0.2	0.4
Glass and glassware.....	70	0.345	131.2	131.2	1.1	0.1	0.6	0.2	0.0
Pearls, stones, precious metals, imitation jewelry, and coins.....	XIV	2.873	174.9	170.6	-1.3	-1.9	2.0	2.5	-2.5
Base metals and articles of base metals. ...	XV	5.682	172.4	173.9	12.0	0.3	0.7	2.3	0.9
Iron and steel.....	72	1.373	200.7	204.3	22.0	-0.8	1.1	1.8	1.8
Articles of iron or steel.....	73	1.709	146.3	147.9	8.1	0.9	-0.8	1.5	1.1
Copper and articles thereof.....	74	0.423	300.7	290.9	21.6	2.1	5.1	5.3	-3.3
Aluminum and articles thereof.....	76	0.825	132.8	136.3	13.1	0.4	0.1	2.9	2.6
Tools, implements, cutlery, spoons and forks, of base metal; parts thereof.....	82	0.431	123.0	121.9	-0.3	0.1	0.4	0.0	-0.9
Miscellaneous articles of base metal.....	83	0.521	137.6	137.8	1.0	-0.1	0.3	0.6	0.1
Machinery, electrical equipment, TV image and sound recorders, parts, etc.....	XVI	29.627	80.6	80.7	-0.1	0.2	0.1	-0.1	0.1
Machinery and mechanical appliances; parts thereof.....	84	14.814	86.5	86.6	1.1	0.2	0.3	0.2	0.1
Electrical machinery and equip, sound and TV recorders & reproducers, parts.....	85	14.813	75.1	75.1	-1.3	0.3	0.0	-0.5	0.0
Vehicles, aircraft, vessels and associated transport equipment.....	XVII	14.474	113.9	113.8	-0.5	-0.4	0.1	0.1	-0.1
Motor vehicles and their parts.....	87	13.027	112.9	112.7	-0.3	-0.4	0.1	0.1	-0.2
Aircraft, spacecraft, and parts thereof (Dec. 2002=100).....	88	1.316	115.5	115.8	-2.6	-0.2	-0.3	0.1	0.3
Optical, photo, measuring, medical & musical instruments; & timepieces.....	XVIII	3.845	102.0	102.0	-0.9	0.2	0.2	0.2	0.0
Optical, photographic, measuring and medical instruments.....	90	3.517	98.6	98.6	-1.0	0.2	0.1	0.3	0.0
Clocks and watches and parts thereof.....	91	0.269	143.9	143.8	1.1	1.0	0.0	0.0	-0.1
Miscellaneous manufactured articles.....	XX	4.258	111.1	111.2	-0.4	0.1	0.1	0.0	0.1
Furniture & stuffed furnishings; lamps & lighting fittings, nesoi; prefab bldgs.....	94	2.638	116.9	116.9	0.3	0.2	0.2	0.1	0.0
Toys, games and sports equipment; parts and accessories thereof.....	95	1.347	101.3	101.3	-1.9	0.0	-0.1	0.0	0.0
Miscellaneous manufactured articles.....	96	0.273	129.8	129.8	-1.5	0.0	0.0	0.1	0.0

¹ Relative importance figures are based on 2015 trade values.

NOTES: Data may be revised in each of the 3 months after original publication.

Dash = Not available

Table 6. U.S. export price indexes and percent changes for selected categories of goods: October 2016 to October 2017

[2000=100, unless otherwise noted]

Description	Harmoni- zied system	Relative importance Sept. 2017 ¹	Index		Percent change				
			Sept. 2017	Oct. 2017	Annual	Monthly			
					Oct. 2016 to Oct. 2017	June 2017 to July 2017	July 2017 to Aug. 2017	Aug. 2017 to Sept. 2017	Sept. 2017 to Oct. 2017
Live animals; animal products.....	I	1.910	208.6	208.9	8.8	2.3	0.2	-1.8	0.1
Meat & edible meat offal (Dec. 2006=100)...	02	1.123	166.5	166.2	13.1	2.3	0.2	-2.7	-0.2
Fish and crustaceans, mollusks and aquatic invertebrates (Dec. 2016=100).....	03	0.405	110.1	113.9	-	5.5	0.5	0.5	3.5
Vegetable products.....	II	4.150	190.8	200.1	5.2	3.2	-0.6	-0.6	4.9
Edible fruit and nuts; peel of citrus fruit or melons.....	08	0.835	141.9	144.7	-4.7	3.1	1.9	1.4	2.0
Cereals.....	10	1.176	174.1	178.8	5.9	7.6	-5.2	-3.8	2.7
Oilseeds and misc. grains, seeds, fruits, plants, straw and fodder.....	12	1.632	199.8	199.0	-0.1	4.1	1.2	-0.3	-0.4
Prepared foodstuffs, beverages, and tobacco.....	IV	3.061	149.2	149.0	0.4	0.5	0.2	0.3	-0.1
Preparations of vegetables, fruit, nuts or other parts of plants (Dec. 2009=100).....	20	0.377	116.6	117.7	1.0	0.1	-0.1	-0.3	0.9
Beverages, spirits, and vinegar (Dec. 2008=100).....	22	0.548	112.4	111.3	-0.2	0.2	0.6	0.3	-1.0
Residues and waste from the food industries; prepared animal feed.....	23	0.697	192.7	192.9	-6.2	0.2	-1.6	1.5	0.1
Mineral products.....	V	8.951	216.6	211.4	17.9	2.2	4.7	6.1	-2.4
Ores, slag and ash (Dec. 2012=100).....	26	0.597	101.9	103.8	27.2	2.7	3.1	6.9	1.9
Mineral fuels, oils and residuals, bituminous substances and mineral waxes.....	27	8.163	207.6	201.9	17.7	2.2	4.9	6.1	-2.7
Products of the chemical or allied industries.....	VI	10.744	135.0	135.2	-0.4	1.1	0.4	0.3	0.1
Inorganic chemicals.....	28	0.742	157.1	158.4	-9.5	0.5	1.1	-3.4	0.8
Organic chemicals.....	29	2.575	135.7	135.7	2.1	1.5	1.1	2.0	0.0
Pharmaceutical products.....	30	3.148	105.5	105.9	-2.6	0.1	0.4	0.2	0.4
Fertilizers (Dec. 2016=100).....	31	0.238	104.5	104.4	-	-0.6	-1.0	-1.4	-0.1
Tanning or dyeing extracts, dyes, paints varnish, putty, & inks (Dec. 2015=100)....	32	0.523	99.4	102.4	5.0	-0.4	-1.7	1.1	3.0
Essential oils and resinoids; perfumery cosmetic or toilet preparations.....	33	0.805	132.5	132.1	0.8	-0.1	-0.2	0.2	-0.3
Soap; lubricants; waxes, polishing or scouring products; candles, pastes.....	34	0.564	128.9	125.8	8.2	15.3	0.1	-0.7	-2.4
Miscellaneous chemical products.....	38	1.726	144.2	144.8	-0.7	0.1	0.1	0.0	0.4
Plastics and articles thereof; rubber and articles thereof.....	VII	5.054	138.0	139.6	2.0	-0.3	0.0	1.0	1.2
Plastics and articles thereof.....	39	4.128	134.1	135.6	2.3	0.1	0.2	1.0	1.1
Rubber and articles thereof.....	40	0.926	153.5	156.0	0.8	-2.0	-0.8	0.5	1.6
Raw hides, skins, leather, furskins, travel goods, etc.....	VIII	0.326	116.3	114.6	-4.8	-0.9	-2.3	-0.7	-1.5
Wood, wood charcoal, cork, straw, baskets and wickerwork (Dec. 2014=100).....	IX	0.644	101.0	103.9	9.3	2.3	0.8	1.8	2.9
Woodpulp, recovered paper, and paper products.....	X	2.101	126.2	123.1	0.4	2.0	-0.8	-2.5	-2.5
Woodpulp and recovered paper.....	47	0.656	133.7	119.4	-7.7	3.6	-2.5	-7.9	-10.7
Paper and paperboard; articles of paper pulp, paper or paperboard.....	48	1.097	122.5	124.8	5.2	1.5	0.1	0.1	1.9
Printed material (Dec. 2014=100).....	49	0.348	101.5	101.5	0.9	0.0	0.0	0.0	0.0
Textile and textile articles.....	XI	1.713	119.6	119.3	-0.3	-0.3	0.3	-0.4	-0.3
Cotton, including yarns and woven fabrics thereof.....	52	0.444	125.0	123.1	0.7	-1.0	0.9	-1.8	-1.5

See footnotes at end of table.

Table 6. U.S. export price indexes and percent changes for selected categories of goods: October 2016 to October 2017 — Continued
 [2000=100, unless otherwise noted]

Description	Harmoni- zied system	Relative importance Sept. 2017 ¹	Index		Percent change				
			Sept. 2017	Oct. 2017	Annual Oct. 2016 to Oct. 2017	Monthly			
						June 2017 to July 2017	July 2017 to Aug. 2017	Aug. 2017 to Sept. 2017	Sept. 2017 to Oct. 2017
Stone, plaster, cement, asbestos, ceramics, glass etc.....	XIII	0.827	123.3	123.5	0.4	0.2	-0.1	0.3	0.2
Articles of stone, plaster, cement, asbestos, or mica (Dec. 2015=100).....	68	0.275	101.3	101.4	0.2	0.0	0.2	0.0	0.1
Glass and glassware.....	70	0.420	98.7	99.1	-0.6	-0.1	-0.2	0.4	0.4
Pearls, stones, precious metals, imitation jewelry, and coins.....	XIV	4.300	240.5	234.6	-0.3	-1.5	1.7	2.9	-2.5
Base metals and articles of base metals. ...	XV	5.037	156.9	156.3	9.5	0.2	1.2	2.3	-0.4
Iron and steel.....	72	1.098	168.1	163.9	16.5	1.2	2.5	5.5	-2.5
Copper and articles thereof.....	74	0.526	188.8	190.1	24.7	2.7	4.3	5.2	0.7
Aluminum and articles thereof.....	76	0.861	115.8	115.9	12.4	-0.9	1.3	3.7	0.1
Tools, implements, cutlery, spoons and forks, of base metal (Dec. 2015=100).	82	0.344	99.5	99.5	-0.5	0.0	0.0	0.0	0.0
Miscellaneous articles of base metal.....	83	0.343	148.2	148.2	0.3	0.0	0.0	0.1	0.0
Machinery, electrical equipment, TV image and sound recorders, parts, etc.....	XVI	28.455	96.4	96.6	1.5	0.2	0.1	0.0	0.2
Machinery and mechanical appliances; parts thereof.....	84	16.727	114.0	114.3	1.9	0.1	0.1	0.0	0.3
Electrical machinery and equipment and parts and accessories thereof.....	85	11.728	77.3	77.6	0.8	0.4	0.1	-0.1	0.4
Vehicles, aircraft, vessels and associated transport equipment.....	XVII	14.847	133.1	133.1	1.0	0.1	0.2	0.1	0.0
Motor vehicles and their parts.....	87	8.595	115.3	115.1	0.3	0.1	0.1	0.0	-0.2
Optical, photo, measuring, medical & musical instruments; & timepieces.....	XVIII	5.992	106.8	107.3	1.1	0.1	0.3	0.1	0.5
Miscellaneous manufactured articles.....	XX	1.465	112.2	112.1	-0.4	-0.1	0.0	-0.1	-0.1
Furniture; stuffed furnishings; lamps and lighting fittings nesoi;.....	94	0.886	128.2	128.1	-0.4	0.0	-0.1	0.0	-0.1
Toys, games and sports equipment; parts and accessories thereof.....	95	0.429	88.7	88.8	-0.4	0.0	0.0	0.0	0.1

¹ Relative importance figures are based on 2015 trade values.

NOTES: Data may be revised in each of the 3 months after original publication.

Dash = Not available

Table 7. U.S. import price indexes and percent changes by locality of origin: October 2016 to October 2017
 [2000=100, unless otherwise noted]

Description	Relative importance Sept. 2017 ¹	Index		Percent change				
		Sept. 2017	Oct. 2017	Annual	Monthly			
				Oct. 2016 to Oct. 2017	June 2017 to July 2017	July 2017 to Aug. 2017	Aug. 2017 to Sept. 2017	Sept. 2017 to Oct. 2017
Industrialized Countries²	100.000	120.7	121.0	2.8	-0.2	0.7	0.8	0.2
Nonmanufacturing.....	8.650	139.4	144.3	12.9	-0.3	2.2	3.7	3.5
Manufacturing.....	90.856	118.6	118.6	1.9	-0.3	0.5	0.5	0.0
Other Countries³	100.000	120.3	120.4	1.7	0.1	0.4	0.7	0.1
Nonmanufacturing.....	9.250	206.3	209.7	15.9	0.7	2.1	5.6	1.6
Manufacturing.....	90.541	103.3	103.2	0.4	0.1	0.3	0.2	-0.1
Canada	100.000	126.3	128.1	6.3	-0.2	1.1	1.4	1.4
Nonmanufacturing.....	23.922	132.9	137.6	12.7	-0.2	2.3	3.5	3.5
Manufacturing.....	75.267	128.3	129.3	4.1	-0.2	0.6	0.7	0.8
European Union⁴	100.000	134.0	134.1	1.7	-0.2	0.8	0.3	0.1
Manufacturing.....	99.386	130.6	130.7	1.8	-0.2	0.7	0.3	0.1
France (Dec. 2003=100)	100.000	125.4	125.8	3.1	0.3	1.6	0.4	0.3
Germany (Dec. 2003=100)	100.000	115.1	115.4	2.9	0.3	0.4	0.2	0.3
United Kingdom (Dec. 2003=100)	100.000	118.2	118.4	0.3	0.0	0.3	0.3	0.2
Latin America⁵	100.000	145.9	146.8	4.6	0.3	0.6	1.4	0.6
Nonmanufacturing.....	19.265	242.0	241.6	17.6	1.3	2.7	6.7	-0.2
Manufacturing.....	80.387	120.5	121.5	1.9	0.1	0.2	0.1	0.8
Mexico (Dec. 2003=100)	100.000	129.1	128.9	2.4	0.0	0.5	1.4	-0.2
Nonmanufacturing (Dec. 2008=100).....	10.237	145.4	137.4	20.7	-0.1	3.1	13.8	-5.5
Manufacturing (Dec. 2008=100).....	89.459	88.3	88.7	0.7	0.0	0.1	0.2	0.5
Pacific Rim (Dec. 2003=100)⁶	100.000	98.4	98.4	-0.2	0.1	-0.1	0.0	0.0
China (Dec. 2003=100)	100.000	99.8	99.8	-0.8	0.1	0.0	-0.3	0.0
Japan	100.000	95.8	95.5	-0.8	-0.2	-0.4	0.1	-0.3
Asian NICs⁷	100.000	87.3	87.5	3.8	0.5	0.2	0.7	0.2
ASEAN (Dec. 2003=100)⁸	100.000	98.1	98.2	1.1	-0.2	0.2	0.1	0.1
Asia Near East (Dec. 2003=100)⁹	100.000	153.0	165.1	11.3	-0.7	0.0	3.4	7.9

¹ Relative importance figures are based on 2015 trade values.

² Western Europe, Canada, Japan, Australia, New Zealand, and South Africa.

³ Eastern Europe, Latin America, OPEC countries, and other countries in Asia, Africa, and the Western Hemisphere.

⁴ European Union countries.

⁵ Mexico, Central America, South America, and the Caribbean.

⁶ China, Japan, Australia, Brunei, Indonesia, Macao, Malaysia, New Zealand, Papua New Guinea, Philippines, and the Asian Newly Industrialized Countries.

⁷ Asian Newly Industrialized Countries - Hong Kong, Singapore, South Korea, and Taiwan.

⁸ Association of Southeast Asian Nations - Brunei, Cambodia, Indonesia, Laos, Malaysia, Myanmar, Philippines, Singapore, Thailand, and Vietnam.

⁹ Bahrain, Iran, Iraq, Israel, Jordan, Kuwait, Lebanon, Oman, Qatar, Saudi Arabia, Syria, United Arab Emirates, and Yemen.

NOTES: Data may be revised in each of the 3 months after original publication.

Regions are not mutually exclusive.

Dash = Not available

Table 8. U.S. international price indexes and percent changes for selected transportation services: October 2016 to October 2017

[2000=100, unless otherwise noted]

Description	Relative importance Sept. 2017 ¹	Index		Percent change				
		Sept. 2017	Oct. 2017	Annual	Monthly			
				Oct. 2016 to Oct. 2017	June 2017 to July 2017	July 2017 to Aug. 2017	Aug. 2017 to Sept. 2017	Sept. 2017 to Oct. 2017
Air Freight								
Import Air Freight	100.000	182.8	175.5	5.4	10.3	0.2	0.4	-4.0
Europe (Dec. 2003=100).....	23.789	147.7	145.1	4.7	3.1	1.0	2.1	-1.8
Asia.....	64.790	175.6	165.9	7.0	15.8	-0.2	0.0	-5.5
Export Air Freight	100.000	158.3	163.0	5.4	-2.5	-0.3	0.5	3.0
Europe (Dec. 2006=100).....	33.138	147.9	150.1	3.2	0.0	0.0	0.7	1.5
Inbound Air Freight	100.000	166.3	161.0	4.2	6.3	0.4	0.5	-3.2
Europe (Dec. 2003=100).....	25.803	136.5	130.8	-3.0	2.3	0.6	1.6	-4.2
Asia.....	61.833	159.4	153.7	7.9	10.2	0.4	0.1	-3.6
Outbound Air Freight	100.000	139.0	140.4	2.4	1.5	-1.5	-1.4	1.0
Europe (Dec. 2003=100).....	30.570	143.8	143.8	0.2	0.4	0.0	-1.5	0.0
Asia.....	46.581	133.7	134.0	4.1	2.9	-3.1	-2.4	0.2
Air Passenger Fares								
Import Air Passenger Fares	100.000	171.3	186.4	-1.4	-2.8	-10.6	8.5	8.8
Europe.....	41.549	193.0	212.2	-3.9	-6.1	-12.4	18.8	9.9
Asia.....	22.904	135.1	135.5	3.2	-6.5	-8.4	4.4	0.3
Latin America/Caribbean.....	9.762	152.7	155.1	0.4	2.0	-2.5	-5.7	1.6
Export Air Passenger Fares	100.000	147.7	153.4	2.3	5.0	-2.1	-8.2	3.9
Europe.....	33.056	206.3	212.6	6.8	1.8	-14.1	13.6	3.1
Asia.....	24.633	118.9	116.0	-8.3	0.2	16.4	-20.5	-2.4
Latin America/Caribbean.....	25.264	162.7	159.3	-3.2	6.6	-1.5	-3.6	-2.1

¹ Relative importance figures are based on 2015 trade values.

NOTES: Data may be revised in each of the 3 months after original publication.

Dash = Not available

TECHNICAL NOTE

Import and Export Merchandise and Services Price Indexes - All indexes use a modified Laspeyres formula and are not seasonally adjusted. Price indexes are reweighted annually, with a 2-year lag in the weights. Published series use a base year of 2000=100 where possible. More detailed index series and additional information may be obtained at www.bls.gov/mxp or by calling (202) 691-7101.

Merchandise Goods Classification Systems - The merchandise price indexes are published using three classification systems. Items are classified by end use according to the Bureau of Economic Analysis Classification System, by industry according to the North American Industry Classification System (NAICS), and by product category according to the Harmonized System (HS). While classification by end use and product category are self-explanatory, some notes are in order for classifying items by industry. In the NAICS imports and exports tables, items are classified by output industry, not input industry. As an example, NAICS import index 326 (plastics and rubber products manufacturing) include outputs such as manufactured plastic rather than inputs such as petroleum. The NAICS classification structure also matches the classification system used by the Producer Price Index (PPI) to produce the NAICS primary products indexes.

Import Price Indexes - Products have been classified by the Harmonized Tariff Schedule of the United States Annotated (TSUSA). Import prices are based on U.S. dollar prices paid by the U.S. importer. The prices are generally either "free on board" (f.o.b.) foreign port or "cost, insurance, and freight" (c.i.f.) U.S. port transaction prices, depending on the practices of the individual industry. The index for crude petroleum is calculated from data collected by the U.S. Department of Energy.

Export Price Indexes - Products have been classified by the Harmonized Schedule B classification system of the U.S. Bureau of the Census. The prices used are generally either "free alongside ship" (f.a.s.) factory or "free on board" (f.o.b.) transaction prices, depending on the practices of the individual industry. Prices used in the grain index, excluding rice, are obtained from the U.S. Department of Agriculture.

Services Price Indexes - Starting in September 2008, the import air passenger fares indexes represent changes in the average revenue per passenger received by foreign carriers from U.S. residents and are calculated from data obtained from an airline consulting service. These data include tickets sold by travel agencies and travel websites. Tickets sold directly by the airlines are excluded, as are frequent flyer tickets generally. Starting in January 2008, the export air passenger fares indexes represent changes in the average revenue per passenger received by U.S. carriers from foreign residents and are calculated from data collected directly from airlines. These data include frequent flyer tickets and those sold by consolidators. Taxes and fees are included in the import air passenger fares indexes and excluded from the export air passenger fares indexes. The air freight indexes are calculated from data collected directly from airlines. These data exclude mail and passenger baggage. The scope of the service being priced is the movement of freight from airport to airport only, and does not include any ground transportation or port service. The air freight indexes are presented using two definitions: balance of payments (which represent transactions between U.S. and foreign residents) and international (which represent transactions inbound to and outbound from the U.S.). Fact sheets specifying detailed information for each services industry are available at www.bls.gov/mxp under "MXP Publications."

Import Indexes by Locality of Origin - Prices used in these indexes are a subset of the data collected for the import price indexes. Beginning with January 2002, the indexes are defined by locality of origin using a nomenclature based upon the North American Industry Classification System (NAICS). Nonmanufactured goods are defined as NAICS 11 and 21, and manufactured goods are defined as NAICS 31-33.

Relative Importance - A relative importance is a specific index's price-updated value share (expressed as a percentage) of overall imports or exports at a specific point in time. Relative importance values are affected by the trade weights at the point indexes are reweighted and index changes relative to other indexes since the reweight point. If an index is rising in value relative to other indexes over time, the relative importance will increase as well.

Revision Policy - To reflect the availability of late reports and corrections by respondents, monthly data may be revised in each of the 3 months after original publication. After 3 months, no further data revisions take place. For example, data first published in the January release will be subject to revision in the releases for February, March, and April.

Uses of the Data - The primary use of the indexes is to deflate trade statistics, notably the foreign trade sector of the National Income and Product Accounts (NIPA) constructed by the Department of Commerce. Other published indexes are useful for general market analysis. For trade in international services, balance of payments indexes are used for deflating NIPA, while international indexes are more appropriate for market analysis. Merchandise and services indexes also can be used to study U.S. competitiveness and to compute price elasticities, and the merchandise import indexes by country or region of origin are useful in terms of trade analysis.

Email Subscription - The U.S. import and export price indexes news release is available through an email subscription service at www.bls.gov/bls/list.htm.

Additional Information - More detailed data are available on the Import/Export Price Indexes home page at www.bls.gov/mxp. For import and export price indexes data requests, send an email to mxpinfo@bls.gov.

Information from this release will be made available to sensory impaired individuals upon request. Voice phone: (202)-691-5200; Federal Relay Service: 1-(800)-877-8339.