



News Release

Connect with DOL at <https://blog.dol.gov>



TRANSMISSION OF MATERIALS IN THIS RELEASE IS EMBARGOED UNTIL
8:30 A.M. (Eastern) Thursday, March 17, 2022

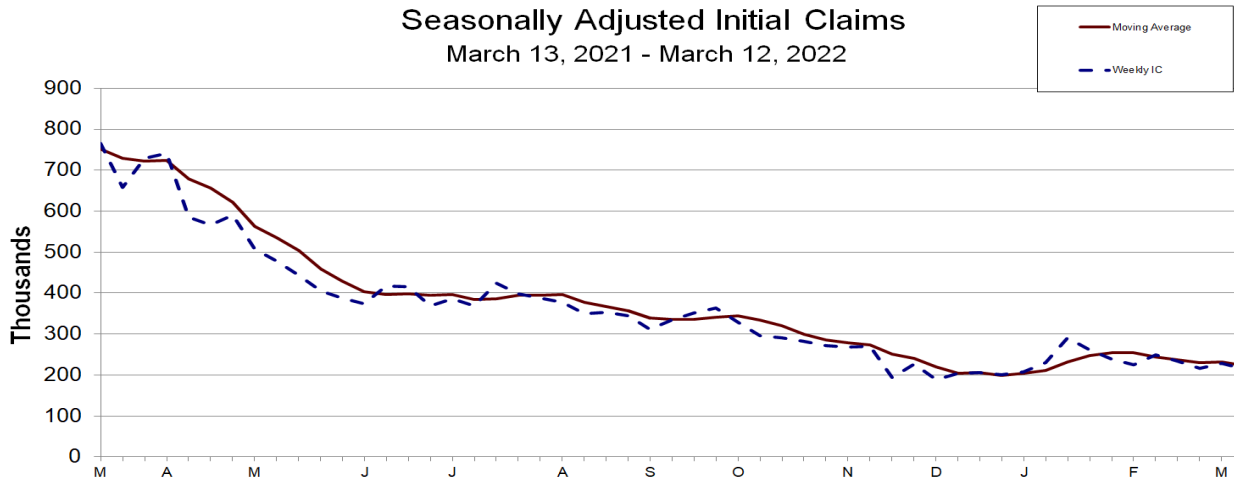
UNEMPLOYMENT INSURANCE WEEKLY CLAIMS

SEASONALLY ADJUSTED DATA

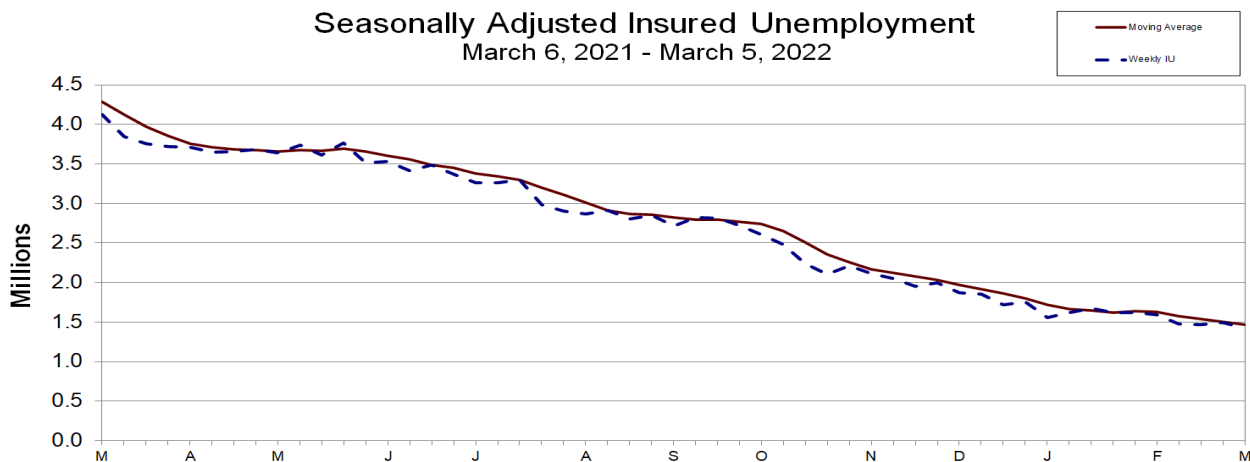
In the week ending March 12, the advance figure for seasonally adjusted **initial claims** was 214,000, a decrease of 15,000 from the previous week's revised level. The previous week's level was revised up by 2,000 from 227,000 to 229,000. The 4-week moving average was 223,000, a decrease of 8,750 from the previous week's revised average. The previous week's average was revised up by 500 from 231,250 to 231,750.

The advance seasonally adjusted **insured unemployment rate** was 1.0 percent for the week ending March 5, a decrease of 0.1 percentage point from the previous week's unrevised rate. The advance number for seasonally adjusted **insured unemployment** during the week ending March 5 was 1,419,000, a decrease of 71,000 from the previous week's revised level. This is the lowest level for insured unemployment since February 21, 1970 when it was 1,412,000. The previous week's level was revised down by 4,000 from 1,494,000 to 1,490,000. The 4-week moving average was 1,463,000, a decrease of 42,500 from the previous week's revised average. This is the lowest level for this average since March 21, 1970 when it was 1,456,750. The previous week's average was revised down by 1,000 from 1,506,500 to 1,505,500.

Seasonally Adjusted Initial Claims
March 13, 2021 - March 12, 2022



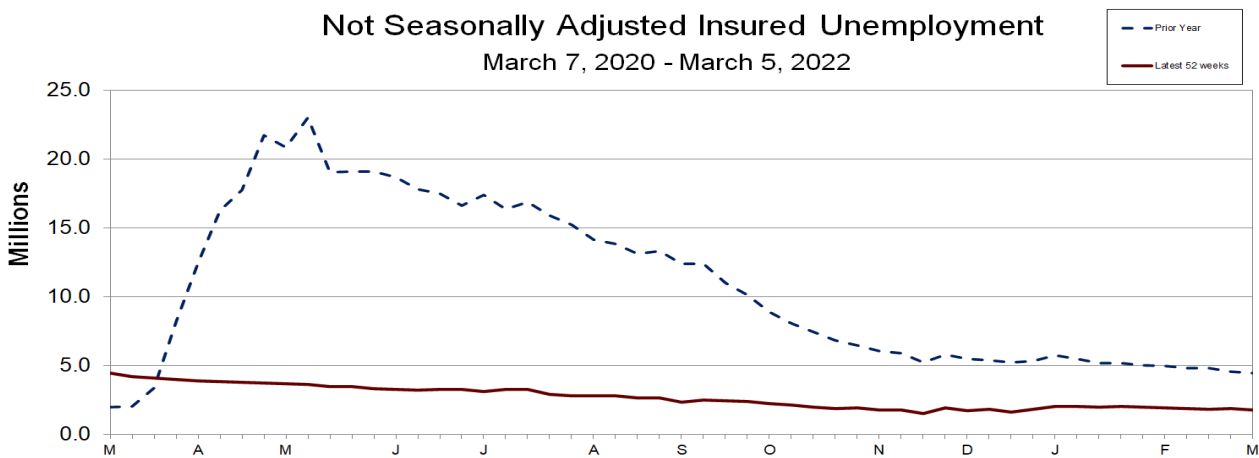
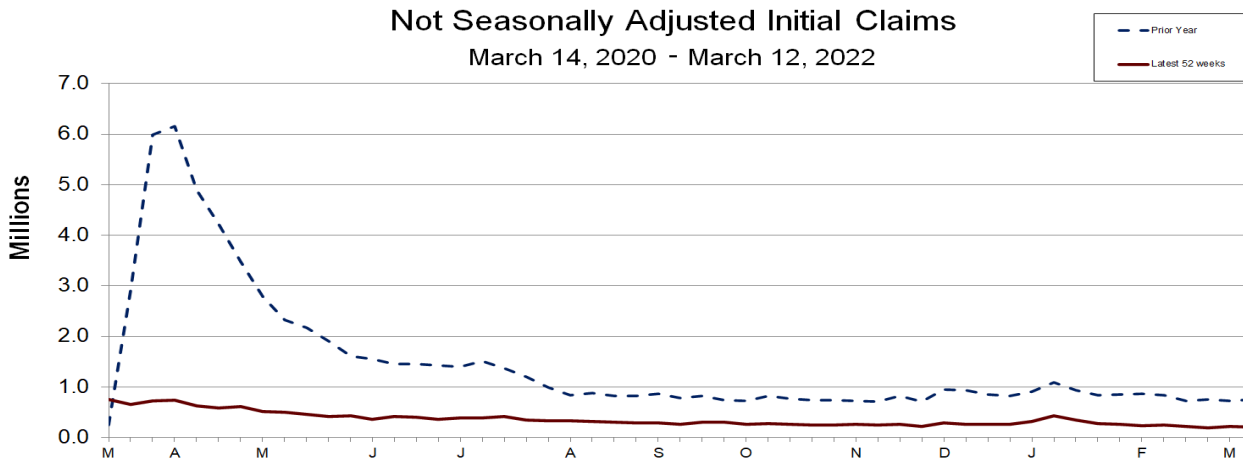
Seasonally Adjusted Insured Unemployment
March 6, 2021 - March 5, 2022



UNADJUSTED DATA

The advance number of actual initial claims under state programs, unadjusted, totaled 202,894 in the week ending March 12, a decrease of 16,981 (or -7.7 percent) from the previous week. The seasonal factors had expected a decrease of 1,486 (or -0.7 percent) from the previous week. There were 757,202 initial claims in the comparable week in 2021.

The advance unadjusted insured unemployment rate was 1.3 percent during the week ending March 5, a decrease of 0.1 percentage point from the prior week. The advance unadjusted level of insured unemployment in state programs totaled 1,805,752, a decrease of 106,417 (or -5.6 percent) from the preceding week. The seasonal factors had expected a decrease of 35,141 (or -1.8 percent) from the previous week. A year earlier the rate was 3.2 percent and the volume was 4,495,885.



The total number of continued weeks claimed for benefits in all programs for the week ending February 26 was 1,968,544, an increase of 59,516 from the previous week. There were 18,946,509 weekly claims filed for benefits in all programs in the comparable week in 2021.

During the week ending February 26, Extended Benefits were available in the following state: New Jersey.

Initial claims for UI benefits filed by former Federal civilian employees totaled 565 in the week ending March 5, an increase of 135 from the prior week. There were 410 initial claims filed by newly discharged veterans, an increase of 134 from the preceding week.

There were 10,700 continued weeks claimed filed by former Federal civilian employees the week ending February 26, an increase of 737 from the previous week. Newly discharged veterans claiming benefits totaled 4,683, an increase of 25 from the prior week.

The highest insured unemployment rates in the week ending February 26 were in Rhode Island (2.7), California (2.6), Alaska (2.4), New Jersey (2.4), Massachusetts (2.3), Minnesota (2.3), New York (2.3), Illinois (2.1), Connecticut (2.0), Georgia (1.9) and Montana (1.9).

The largest increases in initial claims for the week ending March 5 were in New York (+16,157), California (+5,470), Kentucky (+3,148), New Jersey (+2,381), and Ohio (+1,117), while the largest decreases were in Massachusetts (-2,315), Pennsylvania (-2,130), Missouri (-1,378), Tennessee (-1,356), and Rhode Island (-1,224).

UNEMPLOYMENT INSURANCE DATA FOR REGULAR STATE PROGRAMS

WEEK ENDING	March 12	March 5	Change	February 26	Prior Year¹
Initial Claims (SA)	214,000	229,000	-15,000	216,000	765,000
Initial Claims (NSA)	202,894	219,875	-16,981	196,047	757,202
4-Wk Moving Average (SA)	223,000	231,750	-8,750	230,750	751,750

WEEK ENDING	March 5	February 26	Change	February 19	Prior Year¹
Insured Unemployment (SA)	1,419,000	1,490,000	-71,000	1,469,000	4,123,000
Insured Unemployment (NSA)	1,805,752	1,912,169	-106,417	1,852,099	4,495,885
4-Wk Moving Average (SA)	1,463,000	1,505,500	-42,500	1,537,750	4,283,000
Insured Unemployment Rate (SA) ²	1.0%	1.1%	-0.1	1.1%	2.9%
Insured Unemployment Rate (NSA) ²	1.3%	1.4%	-0.1	1.3%	3.2%

INITIAL CLAIMS FILED IN FEDERAL PROGRAMS (UNADJUSTED)³

WEEK ENDING	March 5	February 26	Change	Prior Year¹
Federal Employees (UCFE)	565	430	+135	1,286
Newly Discharged Veterans (UCX)	410	276	+134	699

CONTINUED WEEKS CLAIMED FILED FOR UI BENEFITS IN ALL PROGRAMS (UNADJUSTED)³

WEEK ENDING	February 26	February 19	Change	Prior Year¹
Regular State	1,907,691	1,847,939	+59,752	4,547,892
Federal Employees	10,700	9,963	+737	19,647
Newly Discharged Veterans	4,683	4,658	+25	8,272
Extended Benefits ⁴	28,233	29,907	-1,674	1,104,427
State Additional Benefits ⁵	2,209	2,259	-50	1,807
STC / Workshare ⁶	15,028	14,302	+726	103,776
TOTAL⁷	1,968,544	1,909,028	+59,516	18,946,509

FOOTNOTES

SA - Seasonally Adjusted Data, NSA - Not Seasonally Adjusted Data Continued weeks claimed represent all weeks of benefits claimed during the week being reported, and do not represent weeks claimed by unique individuals.

1. Prior year is comparable to most recent data.
2. Most recent week used covered employment of 138,088,262 as denominator.
3. NOTICE: Ongoing claims for PUA and PEUC are no longer included in this news release. Any ongoing claims for these programs represent a activity for periods prior to the programs' expiration on September 6, 2021. Claims activity for these programs will continue to be posted online at: [Weekly Pandemic Program Claims](#)
4. Information on the EB program can be found here: [EB Program information](#)
5. Some states maintain additional benefit programs for those claimants who exhaust regular benefits, and when applicable, extended benefits. Information on states that participate, and the extent of benefits paid, can be found starting on page 4-5 of this link: [Extensions and Special Programs PDF](#)
6. Information on STC/Worksharing can be found starting on page 4-11 of the following link: [Extensions and Special Programs PDF](#)
7. Prior year total includes PUA and PEUC claims.

Advance State Claims - Not Seasonally Adjusted

STATE	Initial Claims Filed During Week Ended March 12			Insured Unemployment For Week Ended March 5		
	Advance	Prior Wk	Change	Advance	Prior Wk	Change
Alabama	1,919	1,703	216	2,987	4,387	-1,400
Alaska	1,043	969	74	6,385	6,698	-313
Arizona	2,554	2,508	46	11,426	13,198	-1,772
Arkansas	973	1,025	-52	7,403	8,649	-1,246
California	45,607	43,612	1,995	416,422	413,899	2,523
Colorado	1,368	1,453	-85	17,564	17,169	395
Connecticut	2,191	2,564	-373	29,419	30,321	-902
Delaware	303	468	-165	4,330	4,203	127
District of Columbia	1,411	2,422	-1,011	5,520	5,058	462
Florida	3,730	3,830	-100	34,127	37,393	-3,266
Georgia	3,820	4,627	-807	30,243	82,217	-51,974
Hawaii	1,209	1,312	-103	7,841	7,609	232
Idaho	905	977	-72	6,583	8,026	-1,443
Illinois	8,932	8,491	441	125,364	115,988	9,376
Indiana	3,604	3,295	309	25,705	26,578	-873
Iowa	1,630	1,376	254	20,343	21,905	-1,562
Kansas	3,062	3,140	-78	6,265	7,088	-823
Kentucky	7,065	6,890	175	15,067	13,727	1,340
Louisiana	1,442	1,347	95	10,743	12,871	-2,128
Maine	479	664	-185	7,416	7,945	-529
Maryland	1,510	1,991	-481	23,188	23,618	-430
Massachusetts	4,436	5,580	-1,144	71,421	77,475	-6,054
Michigan	9,807	7,696	2,111	61,057	65,276	-4,219
Minnesota	3,228	3,594	-366	62,467	61,461	1,006
Mississippi	816	846	-30	3,763	4,633	-870
Missouri	3,737	2,943	794	18,539	20,707	-2,168
Montana	647	747	-100	8,097	8,726	-629
Nebraska	594	755	-161	5,281	5,737	-456
Nevada	1,934	1,881	53	15,199	15,495	-296
New Hampshire	291	660	-369	2,923	2,970	-47
New Jersey	7,373	8,554	-1,181	89,905	89,461	444
New Mexico	570	594	-24	9,332	9,532	-200
New York	13,396	29,402	-16,006	180,351	198,585	-18,234
North Carolina	2,536	2,646	-110	13,198	14,666	-1,468
North Dakota	403	290	113	5,600	5,773	-173
Ohio	13,390	11,926	1,464	52,228	56,429	-4,201
Oklahoma	1,619	1,555	64	10,569	12,005	-1,436
Oregon	3,292	3,859	-567	26,532	26,415	117
Pennsylvania	7,419	7,283	136	98,203	99,753	-1,550
Puerto Rico	888	937	-49	12,772	12,816	-44
Rhode Island	749	817	-68	10,339	11,894	-1,555
South Carolina	1,531	1,722	-191	8,958	10,057	-1,099
South Dakota	148	158	-10	2,602	2,793	-191
Tennessee	1,804	1,936	-132	13,237	15,910	-2,673
Texas	13,432	13,338	94	92,790	98,806	-6,016
Utah	1,335	1,448	-113	7,805	8,356	-551
Vermont	352	387	-35	3,993	4,126	-133
Virgin Islands	25	46	-21	508	570	-62
Virginia	2,031	1,829	202	7,547	6,510	1,037
Washington	4,302	5,295	-993	48,610	48,261	349
West Virginia	604	708	-104	8,524	8,365	159
Wisconsin	5,063	5,371	-308	36,430	37,359	-929
Wyoming	385	408	-23	2,631	2,700	-69
US Total	202,894	219,875	-16,981	1,805,752	1,912,169	-106,417

Note: Advance claims are not directly comparable to claims reported in prior weeks. Advance claims are reported by the state liable for paying the unemployment compensation, whereas previous weeks reported claims reflect claimants by state of residence. In addition, claims reported as "workshare equivalent" in the previous week are added to the advance claims as a proxy for the current week's "workshare equivalent" activity.

Seasonally Adjusted US Weekly UI Claims (in thousands)

Week Ending	Initial Claims	Change from		Insured Unemployment	Change from		IUR
		Prior Week	4-Week Average		Prior Week	4-Week Average	
March 6, 2021	734	-27	772.25	4,123	-34	4,283.00	2.9
March 13, 2021	765	31	751.75	3,841	-282	4,126.00	2.7
March 20, 2021	658	-107	729.50	3,753	-88	3,968.50	2.6
March 27, 2021	729	71	721.50	3,717	-36	3,858.50	2.6
April 3, 2021	742	13	723.50	3,708	-9	3,754.75	2.7
April 10, 2021	586	-156	678.75	3,652	-56	3,707.50	2.6
April 17, 2021	566	-20	655.75	3,653	1	3,682.50	2.6
April 24, 2021	590	24	621.00	3,680	27	3,673.25	2.6
May 1, 2021	507	-83	562.25	3,640	-40	3,656.25	2.6
May 8, 2021	478	-29	535.25	3,738	98	3,677.75	2.7
May 15, 2021	444	-34	504.75	3,611	-127	3,667.25	2.6
May 22, 2021	405	-39	458.50	3,769	158	3,689.50	2.7
May 29, 2021	388	-17	428.75	3,517	-252	3,658.75	2.5
June 5, 2021	374	-14	402.75	3,528	11	3,606.25	2.5
June 12, 2021	418	44	396.25	3,412	-116	3,556.50	2.5
June 19, 2021	416	-2	399.00	3,484	72	3,485.25	2.5
June 26, 2021	368	-48	394.00	3,367	-117	3,447.75	2.4
July 3, 2021	386	18	397.00	3,265	-102	3,382.00	2.4
July 10, 2021	368	-18	384.50	3,262	-3	3,344.50	2.4
July 17, 2021	424	56	386.50	3,296	34	3,297.50	2.4
July 24, 2021	399	-25	394.25	2,980	-316	3,200.75	2.2
July 31, 2021	387	-12	394.50	2,899	-81	3,109.25	2.1
August 7, 2021	377	-10	396.75	2,865	-34	3,010.00	2.1
August 14, 2021	349	-28	378.00	2,908	43	2,913.00	2.1
August 21, 2021	354	5	366.75	2,805	-103	2,869.25	2.0
August 28, 2021	345	-9	356.25	2,852	47	2,857.50	2.1
September 4, 2021	312	-33	340.00	2,715	-137	2,820.00	2.0
September 11, 2021	335	23	336.50	2,820	105	2,798.00	2.1
September 18, 2021	351	16	335.75	2,811	-9	2,799.50	2.1
September 25, 2021	364	13	340.50	2,727	-84	2,768.25	2.0
October 2, 2021	329	-35	344.75	2,603	-124	2,740.25	1.9
October 9, 2021	296	-33	335.00	2,480	-123	2,655.25	1.8
October 16, 2021	291	-5	320.00	2,239	-241	2,512.25	1.7
October 23, 2021	283	-8	299.75	2,101	-138	2,355.75	1.6
October 30, 2021	271	-12	285.25	2,209	108	2,257.25	1.6
November 6, 2021	269	-2	278.50	2,109	-100	2,164.50	1.6
November 13, 2021	270	1	273.25	2,055	-54	2,118.50	1.5
November 20, 2021	194	-76	251.00	1,954	-101	2,081.75	1.4
November 27, 2021	227	33	240.00	1,999	45	2,029.25	1.5
December 4, 2021	188	-39	219.75	1,867	-132	1,968.75	1.4
December 11, 2021	205	17	203.50	1,856	-11	1,919.00	1.4
December 18, 2021	206	1	206.50	1,718	-138	1,860.00	1.3
December 25, 2021	200	-6	199.75	1,753	35	1,798.50	1.3
January 1, 2022	207	7	204.50	1,555	-198	1,720.50	1.1
January 8, 2022	231	24	211.00	1,624	69	1,662.50	1.2
January 15, 2022	290	59	232.00	1,672	48	1,651.00	1.2
January 22, 2022	261	-29	247.25	1,621	-51	1,618.00	1.2
January 29, 2022	239	-22	255.25	1,619	-2	1,634.00	1.2
February 5, 2022	225	-14	253.75	1,589	-30	1,625.25	1.2
February 12, 2022	249	24	243.50	1,474	-115	1,575.75	1.1
February 19, 2022	233	-16	236.50	1,469	-5	1,537.75	1.1
February 26, 2022	216	-17	230.75	1,490	21	1,505.50	1.1
March 5, 2022	229	13	231.75	1,419	-71	1,463.00	1.0
March 12, 2022	214	-15	223.00				

Extended Benefits (EB) Continued Claims - Not Seasonally Adjusted

STATE	EB Claims Filed During Weeks Ended:		
	February 26	February 19	Change
Alabama	0	0	0
Alaska	0	0	0
Arizona	6	3	3
Arkansas	0	0	0
California	1,612	1,527	85
Colorado	0	0	0
Connecticut	79	27	52
Delaware	0	0	0
District of Columbia	1	1	0
Florida	71	54	17
Georgia	0	0	0
Hawaii	1	1	0
Idaho	0	1	-1
Illinois	18	37	-19
Indiana	0	0	0
Iowa	2	4	-2
Kansas	14	10	4
Kentucky	0	0	0
Louisiana	1	1	0
Maine	2	3	-1
Maryland	5	26	-21
Massachusetts	0	0	0
Michigan	14	5	9
Minnesota	0	0	0
Mississippi	1	1	0
Missouri	4	3	1
Montana	1	1	0
Nebraska	0	0	0
Nevada	4	4	0
New Hampshire	1	1	0
New Jersey	25,911	26,142	-231
New Mexico	17	1,693	-1,676
New York	94	29	65
North Carolina	12	13	-1
North Dakota	0	0	0
Ohio	36	29	7
Oklahoma	0	0	0
Oregon	6	12	-6
Pennsylvania	77	61	16
Puerto Rico	77	35	42
Rhode Island	1	1	0
South Carolina	5	3	2
South Dakota	0	0	0
Tennessee	3	6	-3
Texas	153	168	-15
Utah	0	0	0
Vermont	0	0	0
Virgin Islands	1	0	1
Virginia	0	0	0
Washington	0	0	0
West Virginia	3	3	0
Wisconsin	0	2	-2
Wyoming	0	0	0
US Total	28,233	29,907	-1,674

Note: Information on the EB program can be found here: [EB Program information](#)

STATE NAME	INITIAL CLAIMS FILED DURING WEEK ENDED MARCH 5						INSURED UNEMPLOYMENT FOR WEEK ENDED FEBRUARY 26						ALL PROGRAMS EXCLUDING RAILROAD RETIREMENT
	STATE	CHANGE FROM		UCFE ¹	UCX ¹	STATE	(%) ²	CHANGE FROM		UCFE ¹	UCX ¹		
		LAST WEEK	YEAR AGO					LAST WEEK	YEAR AGO				
Alabama	1,703	-109	-11,889	9	8	4,387	0.2	-30	-12,592	49	19	4,455	
Alaska	969	64	-2,371	5	2	6,698	2.4	-92	-9,924	151	9	6,858	
Arizona	2,508	294	-1,736	4	1	13,198	0.5	-90	-47,073	184	11	13,393	
Arkansas	1,025	335	-2,781	0	1	8,649	0.7	740	-16,199	0	19	8,668	
California	43,612	5,470	-63,159	152	103	413,899	2.6	19,332	-291,164	2,543	1,021	417,463	
Colorado	1,453	-320	-2,994	7	3	17,169	0.7	-636	-32,250	235	246	17,650	
Connecticut	2,564	-18	-2,363	4	6	30,321	2.0	3,371	-49,318	65	38	30,424	
Delaware	468	-16	-1,259	1	1	4,203	1.0	-223	-8,390	12	0	4,215	
District of Columbia	2,422	467	1,229	4	0	5,058	1.0	931	-14,441	79	1	5,138	
Florida	3,830	502	-15,451	12	23	37,393	0.4	1,309	-104,091	178	134	37,705	
Georgia	4,627	-569	-20,347	34	16	82,217	1.9	49,256	-58,701	373	208	82,798	
Hawaii	1,312	252	-1,159	4	10	7,609	1.5	-396	-10,970	73	74	7,756	
Idaho	977	52	-3,221	11	1	8,026	1.1	0	-5,942	260	6	8,292	
Illinois	8,491	261	-48,992	8	6	115,988	2.1	-18,442	-133,268	478	163	116,629	
Indiana	3,295	-394	-5,942	4	3	26,578	1.0	-1,545	-42,765	71	50	26,699	
Iowa	1,376	-88	-3,806	6	2	21,905	1.5	-291	-22,108	34	19	21,958	
Kansas	3,140	-169	576	0	1	7,088	0.5	620	-15,145	24	14	7,126	
Kentucky	6,890	3,148	-2,387	0	0	13,727	0.7	-1,466	-30,973	102	63	13,892	
Louisiana	1,347	20	-5,753	4	0	12,871	0.7	-214	-35,145	49	18	12,938	
Maine	664	-2	-815	1	0	7,945	1.4	204	-8,397	32	9	7,986	
Maryland	1,991	228	-5,713	16	6	23,618	1.0	1,261	-37,616	154	114	23,886	
Massachusetts	5,580	-2,315	-11,390	7	12	77,475	2.3	3,878	-72,656	157	56	77,688	
Michigan	7,696	-1,047	-3,697	4	5	65,276	1.6	-6,061	-92,882	155	54	65,485	
Minnesota	3,594	454	-4,517	5	4	61,461	2.3	-7	-46,794	138	49	61,648	
Mississippi	846	79	-6,557	11	2	4,633	0.4	-113	-26,350	52	9	4,694	
Missouri	2,943	-1,378	-4,533	1	4	20,707	0.8	-675	-34,247	72	19	20,798	
Montana	747	-124	-716	17	5	8,726	1.9	386	-7,446	580	14	9,320	
Nebraska	755	91	-796	0	0	5,737	0.6	92	-8,701	17	5	5,759	
Nevada	1,881	-252	-8,667	1	1	15,495	1.2	-1,473	-56,563	102	35	15,632	
New Hampshire	660	272	-2,283	2	2	2,970	0.5	41	-22,081	6	2	2,978	
New Jersey	8,554	2,381	-1,303	18	18	89,461	2.4	40	-38,387	296	163	89,920	
New Mexico	594	73	-1,744	2	1	9,532	1.3	-297	-23,417	256	28	9,816	
New York	29,402	16,157	-18,822	33	18	198,585	2.3	14,655	-227,700	469	265	199,319	
North Carolina	2,646	48	-5,509	2	4	14,666	0.3	-424	-44,531	92	84	14,842	
North Dakota	290	-6	-291	1	2	5,773	1.5	31	-3,378	13	1	5,787	
Ohio	11,926	1,117	-116,266	4	3	56,429	1.1	-2,914	-126,391	83	90	56,602	
Oklahoma	1,555	116	-5,521	8	7	12,005	0.8	76	-22,528	75	43	12,123	
Oregon	3,859	529	-3,256	18	3	26,415	1.5	-302	-42,807	705	39	27,159	
Pennsylvania	7,283	-2,130	-13,554	22	8	99,753	1.8	2,144	-202,632	403	92	100,248	
Puerto Rico	937	95	-342	4	1	12,816	1.5	1,171	-14,318	158	53	13,027	
Rhode Island	817	-1,224	-4,009	2	2	11,894	2.7	1,386	-8,696	28	31	11,953	
South Carolina	1,722	858	-3,758	4	2	10,057	0.5	-213	-31,842	33	62	10,152	
South Dakota	158	7	-140	4	0	2,793	0.7	121	-2,878	40	4	2,837	
Tennessee	1,936	-1,356	-6,063	6	7	15,910	0.5	-1,463	-34,723	50	21	15,981	
Texas	13,338	936	-36,028	51	76	98,806	0.8	-2,090	-216,776	670	887	100,363	
Utah	1,448	116	-994	19	5	8,356	0.6	-195	-6,795	205	15	8,576	
Vermont	387	-220	-603	1	0	4,126	1.5	194	-8,069	6	0	4,132	
Virgin Islands	46	16	-117	1	0	570	1.6	86	-1,312	2	0	572	
Virginia	1,829	411	-11,907	2	4	6,510	0.2	-301	-55,759	42	38	6,590	
Washington	5,295	850	-6,939	12	19	48,261	1.5	254	-82,004	427	245	48,933	
West Virginia	708	-17	-6,835	1	0	8,365	1.4	-215	-13,113	53	29	8,447	
Wisconsin	5,371	-42	-6,845	11	1	37,359	1.4	-1,341	-62,799	108	12	37,479	
Wyoming	408	-75	-451	5	1	2,700	1.1	0	-2,497	61	2	2,763	
Totals	219,875	23,828	-494,786	565	410	1,912,169	1.4	60,070	-2,627,544	10,700	4,683	1,927,552	

Figures appearing in columns showing over-the-week changes reflect all revisions in data for prior week submitted by state agencies.

1. The Unemployment Compensation program for Federal Employees (UCFE) and the Unemployment Compensation for Ex-servicemembers (UCX) exclude claims filed jointly under other programs to avoid duplication.
2. Rate is not seasonally adjusted. The source of U.S. total covered employment is BLS.

UNADJUSTED INITIAL CLAIMS FOR WEEK ENDED MARCH 5, 2022

STATES WITH AN INCREASE OF MORE THAN 1,000

State	Change	State Supplied Comment
NY	+16,157	Layoffs in the transportation and warehousing, accommodation and food services, and educational services industries.
CA	+5,470	Layoffs in the services and agriculture, forestry, fishing, and hunting industries.
KY	+3,148	Layoffs in the automobile industry.
NJ	+2,381	No comment.
OH	+1,117	Layoffs in the manufacturing industry.

STATES WITH A DECREASE OF MORE THAN 1,000

State	Change	State Supplied Comment
MA	-2,315	No comment.
PA	-2,130	No comment.
MO	-1,378	Fewer layoffs in the manufacturing, arts, entertainment, and recreation, and educational services industries.
TN	-1,356	No comment.
RI	-1,224	No comment.
MI	-1,047	No comment.

TECHNICAL NOTES

This news release presents the weekly unemployment insurance (UI) claims reported by each state's unemployment insurance program offices. These claims may be used for monitoring workload volume, assessing state program operations and for assessing labor market conditions. States initially report claims directly taken by the state liable for the benefit payments, regardless of where the claimant who filed the claim resided. These are the basis for the advance initial claims and continued claims reported each week. These data come from ETA 538, Advance Weekly Initial and Continued Claims Report. The following week initial claims and continued claims are revised based on a second reporting by states that reflect the claimants by state of residence. These data come from the ETA 539, Weekly Claims and Extended Benefits Trigger Data Report.

A. Initial Claims

An initial claim is a claim filed by an unemployed individual after a separation from an employer. The claimant requests a determination of basic eligibility for the UI program. When an initial claim is filed with a state, certain programmatic activities take place and these result in activity counts including the count of initial claims. The count of U.S. initial claims for unemployment insurance is a leading economic indicator because it is an indication of emerging labor market conditions in the country. However, these are weekly administrative data which are difficult to seasonally adjust, making the series subject to some volatility.

B. Continued Weeks Claimed

A person who has already filed an initial claim and who has experienced a week of unemployment then files a continued claim to claim benefits for that week of unemployment. On a weekly basis, continued claims are also referred to as insured unemployment, as continued claims reflect a good approximation of the current number of insured unemployed workers filing for UI benefits. The count of U.S. continued weeks claimed is also a good indicator of labor market conditions. While continued claims are not a leading indicator (they roughly coincide with economic cycles at their peaks and lag at cycle troughs), they provide confirming evidence of the direction of the U.S. economy.

C. Seasonal Adjustments and Annual Revisions

Over the course of a year, the weekly changes in the levels of initial claims and continued claims undergo regularly occurring fluctuations. These fluctuations may result from seasonal changes in weather, major holidays, the opening and closing of schools, or other similar events. Because these seasonal events follow a more or less regular pattern each year, their influence on the level of a series can be tempered by adjusting for regular seasonal variation. These adjustments make trend and cycle developments easier to spot. At the beginning of each calendar year, the Bureau of Labor Statistics provides the Employment and Training Administration (ETA) with a set of seasonal factors to apply to the unadjusted data during that year. Concurrent with the implementation and release of the new seasonal factors, ETA incorporates revisions to the UI claims historical series caused by updates to the unadjusted data.

[Weekly Claims Archives](#)

[Weekly Claims Data](#)

U.S. Department of Labor news materials are accessible at <http://www.dol.gov>. The Department's [Reasonable Accommodation Resource Center](#) converts Departmental information and documents into alternative formats, which include Braille and large print. For alternative format requests, please contact the Department at (202) 693-7828 (voice) or (800) 877-8339 (federal relay).

U.S. Department of Labor
Employment and Training Administration
Washington, D.C. 20210
Release Number: USDL 22-486-NAT

Program Contacts:
Kevin Stapleton: (202) 693-3009
Media Contact: (202) 693-4676