



News Release

Connect with DOL at <http://blog.dol.gov>



TRANSMISSION OF MATERIALS IN THIS RELEASE IS EMBARGOED UNTIL
8:30 A.M. (Eastern) Thursday, July 14, 2016

UNEMPLOYMENT INSURANCE WEEKLY CLAIMS

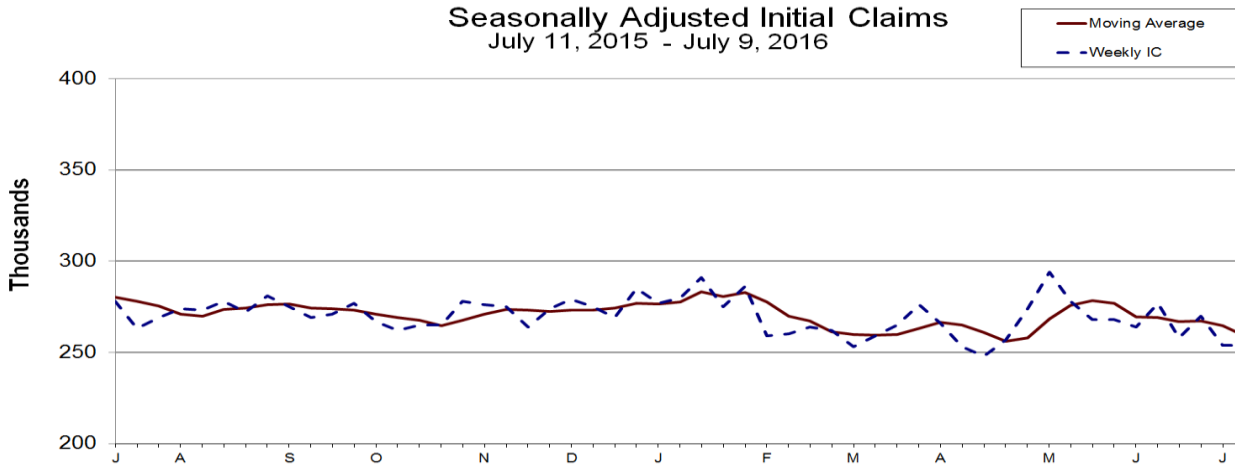
SEASONALLY ADJUSTED DATA

In the week ending July 9, the advance figure for seasonally adjusted **initial claims** was 254,000, unchanged from the previous week's unrevised level of 254,000. The 4-week moving average was 259,000, a decrease of 5,750 from the previous week's unrevised average of 264,750.

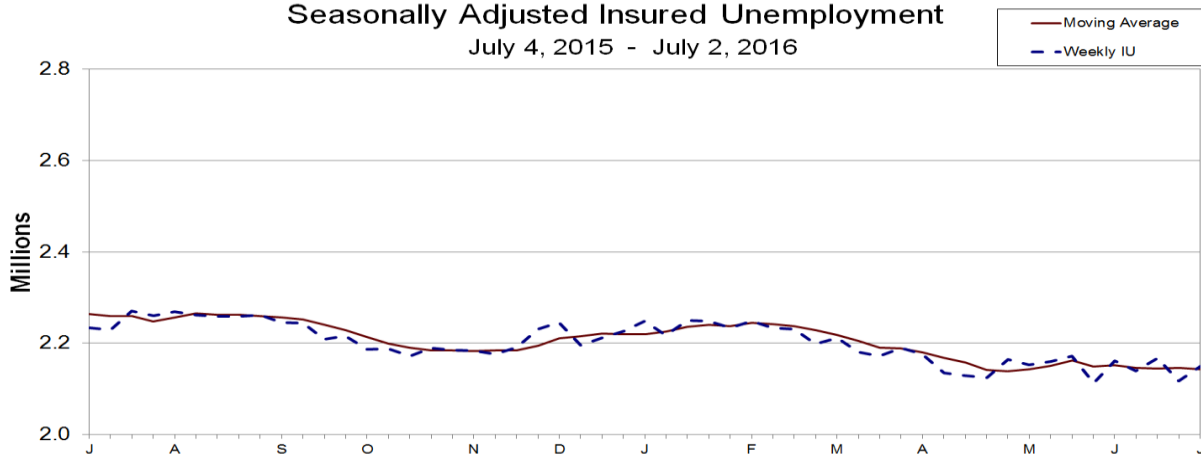
There were no special factors impacting this week's initial claims. This marks 71 consecutive weeks of initial claims below 300,000, the longest streak since 1973.

The advance seasonally adjusted **insured unemployment rate** was 1.6 percent for the week ending July 2, an increase of 0.1 percentage point from the previous week's revised rate. The previous week's rate was revised down by 0.1 from 1.6 to 1.5 percent. The advance number for seasonally adjusted **insured unemployment** during the week ending July 2 was 2,149,000, an increase of 32,000 from the previous week's revised level. The previous week's level was revised down by 7,000 from 2,124,000 to 2,117,000. The 4-week moving average was 2,143,000, a decrease of 3,250 from the previous week's revised average. The previous week's average was revised down by 2,000 from 2,148,250 to 2,146,250.

Seasonally Adjusted Initial Claims
July 11, 2015 - July 9, 2016



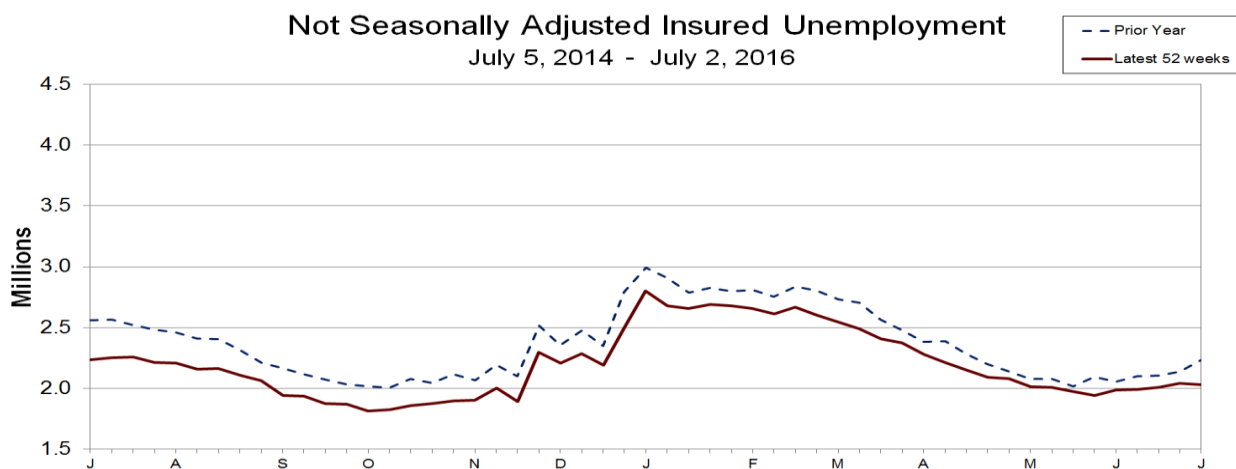
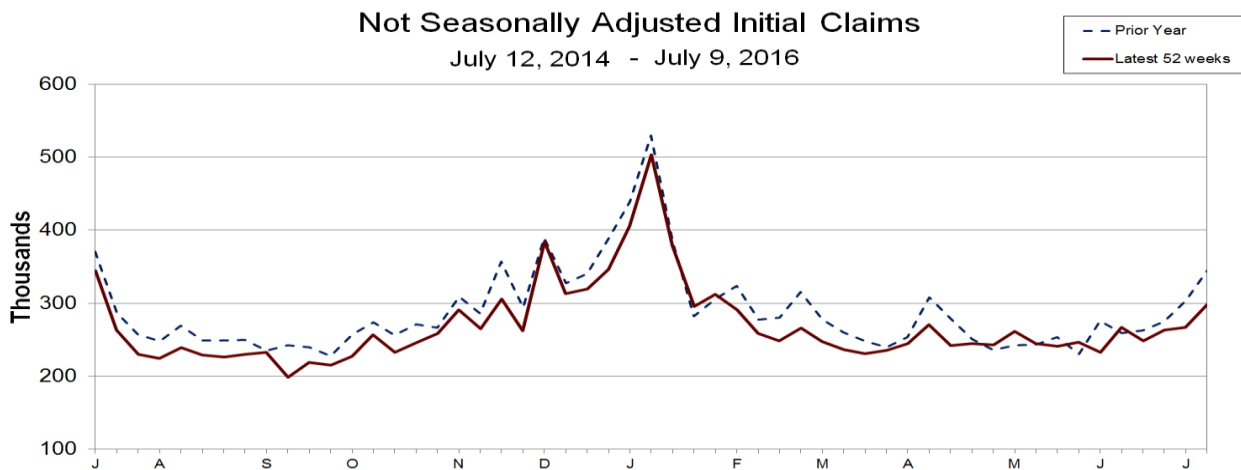
Seasonally Adjusted Insured Unemployment
July 4, 2015 - July 2, 2016



UNADJUSTED DATA

The advance number of actual initial claims under state programs, unadjusted, totaled 298,862 in the week ending July 9, an increase of 31,425 (or 11.8 percent) from the previous week. The seasonal factors had expected an increase of 31,747 (or 11.9 percent) from the previous week. There were 344,471 initial claims in the comparable week in 2015.

The advance unadjusted insured unemployment rate was 1.5 percent during the week ending July 2, unchanged from the prior week. The advance unadjusted number for persons claiming UI benefits in state programs totaled 2,032,539, a decrease of 12,077 (or -0.6 percent) from the preceding week. The seasonal factors had expected a decrease of 42,332 (or -2.1 percent) from the previous week. A year earlier the rate was 1.7 percent and the volume was 2,235,705.



The total number of people claiming benefits in all programs for the week ending June 25 was 2,083,364, an increase of 36,037 from the previous week. There were 2,181,870 persons claiming benefits in all programs in the comparable week in 2015.

No state was triggered "on" the Extended Benefits program during the week ending June 25.

Initial claims for UI benefits filed by former Federal civilian employees totaled 794 in the week ending July 2, an increase of 189 from the prior week. There were 1,116 initial claims filed by newly discharged veterans, an increase of 73 from the preceding week.

There were 7,419 former Federal civilian employees claiming UI benefits for the week ending June 25, an increase of 209 from the previous week. Newly discharged veterans claiming benefits totaled 13,350, an increase of 141 from the prior week.

The highest insured unemployment rates in the week ending June 25 were in Puerto Rico (3.2), Alaska (2.9), Connecticut (2.7), New Jersey (2.4), Pennsylvania (2.4), Wyoming (2.4), West Virginia (2.3), California (2.2), Illinois (2.0), and Rhode Island (2.0).

The largest increases in initial claims for the week ending July 2 were in Kentucky (+5,386), New York (+4,670), Ohio (+1,508), Illinois (+1,423), and South Carolina (+937), while the largest decreases were in California (-3,819), New Jersey (-1,859), Connecticut (-1,694), Maryland (-1,307), and Oregon (-1,230).

UNEMPLOYMENT INSURANCE DATA FOR REGULAR STATE PROGRAMS

WEEK ENDING	July 9	July 2	Change	June 25	<u>Prior Year</u> ¹
Initial Claims (SA)	254,000	254,000		270,000	278,000
Initial Claims (NSA)	298,862	267,437	+31,425	263,424	344,471
4-Wk Moving Average (SA)	259,000	264,750	-5,750	267,250	280,250
WEEK ENDING	July 2	June 25	Change	June 18	<u>Prior Year</u> ¹
Insured Unemployment (SA)	2,149,000	2,117,000	+32,000	2,167,000	2,233,000
Insured Unemployment (NSA)	2,032,539	2,044,616	-12,077	2,008,642	2,235,705
4-Wk Moving Average (SA)	2,143,000	2,146,250	-3,250	2,145,000	2,263,750
<u>Insured Unemployment Rate (SA)</u> ²	1.6%	1.5%	+0.1	1.6%	1.7%
<u>Insured Unemployment Rate (NSA)</u> ²	1.5%	1.5%	0.0	1.5%	1.7%

INITIAL CLAIMS FILED IN FEDERAL PROGRAMS (UNADJUSTED)

WEEK ENDING	July 2	June 25	Change	<u>Prior Year</u> ¹
Federal Employees (UCFE)	794	605	+189	1,066
Newly Discharged Veterans (UCX)	1,116	1,043	+73	1,413

PERSONS CLAIMING UI BENEFITS IN ALL PROGRAMS (UNADJUSTED)

WEEK ENDING	June 25	June 18	Change	<u>Prior Year</u> ¹
Regular State	2,039,263	2,003,351	+35,912	2,133,939
Federal Employees	7,419	7,210	+209	9,509
Newly Discharged Veterans	13,350	13,209	+141	18,021
<u>Extended Benefits</u> ³	0	0	0	0
<u>State Additional Benefits</u> ⁴	6,680	6,795	-115	6,957
<u>STC / Workshare</u> ⁵	16,652	16,762	-110	13,444
<u>TOTAL</u>	2,083,364	2,047,327	+36,037	2,181,870

FOOTNOTES

SA - Seasonally Adjusted Data, NSA - Not Seasonally Adjusted Data

1. Prior year is comparable to most recent data.
2. Most recent week used covered employment of 136,969,042 as denominator.
3. Information on the EB program can be found here: [EB Program information](#)
4. Some states maintain additional benefit programs for those claimants who exhaust regular, extended and emergency benefits. Information on states that participate, and the extent of benefits paid, can be found starting on page 4-5 of this link: [Extensions and Special Programs PDF](#)
5. Information on STC/Worksharing can be found starting on page 4-9 of the following link: [Extensions and Special Programs PDF](#)

Advance State Claims - Not Seasonally Adjusted

STATE	Initial Claims Filed During Week Ended July 9			Insured Unemployment For Week Ended July 2		
	Advance	Prior Wk	Change	Advance	Prior Wk	Change
Alabama	3,328	3,091	237	21,953	22,907	-954
Alaska	970	925	45	8,121	9,246	-1,125
Arizona	6,254	5,398	856	31,856	35,311	-3,455
Arkansas	3,330	2,032	1,298	16,495	17,930	-1,435
California	39,639	45,915	-6,276	325,236	354,923	-29,687
Colorado	2,259	2,338	-79	27,569	27,076	493
Connecticut	3,938	5,185	-1,247	44,266	43,772	494
Delaware	661	579	82	6,635	7,354	-719
District of Columbia	664	449	215	7,764	8,238	-474
Florida	10,300	8,914	1,386	46,964	53,758	-6,794
Georgia	7,098	5,706	1,392	30,821	31,280	-459
Hawaii	1,451	1,160	291	7,332	7,287	45
Idaho	982	996	-14	5,780	6,706	-926
Illinois	10,351	10,530	-179	112,240	112,072	168
Indiana	3,466	3,076	390	21,728	21,843	-115
Iowa	3,307	2,394	913	19,104	17,798	1,306
Kansas	4,947	2,282	2,665	13,513	13,245	268
Kentucky	6,591	7,950	-1,359	22,089	21,497	592
Louisiana	2,846	2,871	-25	27,256	27,224	32
Maine	644	748	-104	5,055	5,380	-325
Maryland	3,822	4,237	-415	34,840	37,941	-3,101
Massachusetts	6,292	8,730	-2,438	65,512	65,073	439
Michigan	17,365	8,326	9,039	49,853	46,474	3,379
Minnesota	4,187	3,601	586	35,353	32,582	2,771
Mississippi	2,045	2,288	-243	15,080	16,224	-1,144
Missouri	10,225	4,372	5,853	24,503	25,689	-1,186
Montana	817	778	39	5,668	6,588	-920
Nebraska	834	953	-119	5,264	4,967	297
Nevada	2,886	2,810	76	21,204	22,459	-1,255
New Hampshire	678	766	-88	4,798	4,974	-176
New Jersey	10,704	16,295	-5,591	101,732	92,645	9,087
New Mexico	960	1,160	-200	13,362	13,651	-289
New York	33,395	20,214	13,181	162,516	143,394	19,122
North Carolina	3,904	3,883	21	26,028	27,377	-1,349
North Dakota	1,149	475	674	6,325	4,242	2,083
Ohio	9,870	7,578	2,292	58,225	57,502	723
Oklahoma	2,137	1,807	330	23,912	24,650	-738
Oregon	3,788	3,494	294	26,728	27,481	-753
Pennsylvania	19,838	17,566	2,272	139,293	136,373	2,920
Puerto Rico	2,655	1,775	880	27,241	28,099	-858
Rhode Island	1,156	1,628	-472	9,826	9,363	463
South Carolina	3,331	3,486	-155	16,955	16,848	107
South Dakota	448	202	246	1,355	1,435	-80
Tennessee	3,808	3,721	87	22,091	22,959	-868
Texas	16,320	16,540	-220	188,785	190,291	-1,506
Utah	1,251	1,166	85	9,159	9,195	-36
Vermont	529	739	-210	4,303	4,087	216
Virgin Islands	24	35	-11	568	628	-60
Virginia	4,258	3,029	1,229	30,029	27,421	2,608
Washington	7,615	6,196	1,419	44,518	42,784	1,734
West Virginia	1,344	1,019	325	15,570	15,410	160
Wisconsin	7,670	5,653	2,017	34,301	34,348	-47
Wyoming	531	376	155	5,865	6,615	-750
US Total	298,862	267,437	31,425	2,032,539	2,044,616	-12,077

Note: Advance Claims are not directly comparable to claims reported in prior weeks. Advance claims are reported by the state liable for paying the unemployment compensation, whereas previous weeks reported reflect claimants by state of residence. In addition, claims reported as "workshare equivalent" in the previous week are added to the advance claims as a proxy for the current week's "workshare equivalent" activity.

Seasonally Adjusted US Weekly UI Claims (in thousands)

Week Ending	Initial Claims	Change from		Insured Unemployment	Change from		IUR
		Prior Week	4-Week Average		Prior Week	4-Week Average	
July 4, 2015	291	11	278.50	2,233	-71	2,263.75	1.7
July 11, 2015	278	-13	280.25	2,229	-4	2,259.50	1.7
July 18, 2015	263	-15	278.00	2,270	41	2,259.00	1.7
July 25, 2015	269	6	275.25	2,260	-10	2,248.00	1.7
August 1, 2015	274	5	271.00	2,269	9	2,257.00	1.7
August 8, 2015	273	-1	269.75	2,261	-8	2,265.00	1.7
August 15, 2015	278	5	273.50	2,259	-2	2,262.25	1.7
August 22, 2015	272	-6	274.25	2,259	0	2,262.00	1.7
August 29, 2015	281	9	276.00	2,261	2	2,260.00	1.7
September 5, 2015	275	-6	276.50	2,246	-15	2,256.25	1.7
September 12, 2015	269	-6	274.25	2,244	-2	2,252.50	1.7
September 19, 2015	271	2	274.00	2,208	-36	2,239.75	1.6
September 26, 2015	277	6	273.00	2,216	8	2,228.50	1.6
October 3, 2015	267	-10	271.00	2,186	-30	2,213.50	1.6
October 10, 2015	262	-5	269.25	2,188	2	2,199.50	1.6
October 17, 2015	265	3	267.75	2,171	-17	2,190.25	1.6
October 24, 2015	265	0	264.75	2,190	19	2,183.75	1.6
October 31, 2015	278	13	267.50	2,185	-5	2,183.50	1.6
November 7, 2015	276	-2	271.00	2,183	-2	2,182.25	1.6
November 14, 2015	275	-1	273.50	2,176	-7	2,183.50	1.6
November 21, 2015	264	-11	273.25	2,191	15	2,183.75	1.6
November 28, 2015	274	10	272.25	2,230	39	2,195.00	1.6
December 5, 2015	279	5	273.00	2,245	15	2,210.50	1.7
December 12, 2015	275	-4	273.00	2,195	-50	2,215.25	1.6
December 19, 2015	269	-6	274.25	2,212	17	2,220.50	1.6
December 26, 2015	285	16	277.00	2,226	14	2,219.50	1.6
January 2, 2016	277	-8	276.50	2,248	22	2,220.25	1.6
January 9, 2016	280	3	277.75	2,217	-31	2,225.75	1.6
January 16, 2016	291	11	283.25	2,250	33	2,235.25	1.7
January 23, 2016	275	-16	280.75	2,248	-2	2,240.75	1.6
January 30, 2016	286	11	283.00	2,234	-14	2,237.25	1.6
February 6, 2016	259	-27	277.75	2,249	15	2,245.25	1.7
February 13, 2016	260	1	270.00	2,233	-16	2,241.00	1.6
February 20, 2016	264	4	267.25	2,231	-2	2,236.75	1.6
February 27, 2016	262	-2	261.25	2,198	-33	2,227.75	1.6
March 5, 2016	253	-9	259.75	2,212	14	2,218.50	1.6
March 12, 2016	259	-6	259.50	2,180	-32	2,205.25	1.6
March 19, 2016	265	6	259.75	2,172	-8	2,190.50	1.6
March 26, 2016	276	11	263.25	2,189	17	2,188.25	1.6
April 2, 2016	266	-10	266.50	2,176	-13	2,179.25	1.6
April 9, 2016	253	-13	265.00	2,135	-41	2,168.00	1.6
April 16, 2016	248	-5	260.75	2,129	-6	2,157.25	1.6
April 23, 2016	257	9	256.00	2,124	-5	2,141.00	1.6
April 30, 2016	274	17	258.00	2,165	41	2,138.25	1.6
May 7, 2016	294	20	268.25	2,153	-12	2,142.75	1.6
May 14, 2016	278	-16	275.75	2,160	7	2,150.50	1.6
May 21, 2016	268	-10	278.50	2,172	12	2,162.50	1.6
May 28, 2016	268	0	277.00	2,112	-60	2,149.25	1.5
June 4, 2016	264	-4	269.50	2,162	50	2,151.50	1.6
June 11, 2016	277	13	269.25	2,139	-23	2,146.25	1.6
June 18, 2016	258	-19	266.75	2,167	28	2,145.00	1.6
June 25, 2016	270	12	267.25	2,117	-50	2,146.25	1.5
July 2, 2016	254	-16	264.75	2,149	32	2,143.00	1.6
July 9, 2016	254	0	259.00				

Initial Claims Filed During Week Ended July 2

Insured Unemployment For Week Ended June 25

STATE	INITIAL CLAIMS							INSURED UNEMPLOYMENT					ALL PROGRAMS EXCLUDING RAILROAD RETIREMENT
	STATE	CHANGE FROM			STATE	CHANGE FROM		STATE	CHANGE FROM		UCFE	UCX	
		LAST WEEK	YEAR AGO	UCFE		UCX	LAST WEEK		YEAR AGO	UCFE			
Alabama	3091	285	-449	13	15	22907	1.3	290	-1464	80	136	23123	
Alaska	925	41	130	2	2	9246	2.9	-259	1255	72	46	9364	
Arizona	5398	735	972	37	3	35311	1.4	780	187	234	140	35685	
Arkansas	2032	184	-935	11	5	17930	1.6	-638	-4406	60	105	18095	
California	45915	-3819	-8026	137	182	354923	2.2	12199	-17271	1237	2629	358789	
Colorado	2338	251	192	7	30	27076	1.1	-728	-1805	136	539	27751	
Connecticut	5185	-1694	377	6	11	43772	2.7	4421	1419	53	142	43967	
Delaware	579	-150	-54	0	1	7354	1.7	1009	-30	12	19	7385	
District of Columbia	449	-170	-3	2	0	8238	1.5	571	-157	250	12	8500	
Florida	8914	-134	-1910	16	73	53758	0.7	1535	-4769	186	293	54237	
Georgia	5706	-765	-1557	29	58	31280	0.8	-677	-7111	213	411	31904	
Hawaii	1160	34	88	5	24	7287	1.2	159	-59	65	141	7493	
Idaho	996	47	-105	3	3	6706	1.0	244	-608	32	41	6779	
Illinois	10530	1423	-90	10	15	112072	2.0	-814	-1117	362	374	112808	
Indiana	3076	229	-608	6	8	21843	0.8	-145	95	55	92	21990	
Iowa	2394	225	-1318	1	5	17798	1.2	-320	59	45	57	17900	
Kansas	2282	-46	-2	15	4	13245	1.0	112	-657	63	76	13384	
Kentucky	7950	5386	2228	26	9	21497	1.2	-601	-754	113	273	21883	
Louisiana	2871	-95	164	5	6	27224	1.4	285	620	62	40	27326	
Maine	748	-83	-194	1	2	5380	0.9	42	-1153	33	23	5436	
Maryland	4237	-1307	267	49	21	37941	1.6	2443	-2932	246	221	38408	
Massachusetts	8730	65	-1652	10	33	65073	1.9	4424	-815	133	254	65460	
Michigan	8326	-401	-9813	10	33	46474	1.1	317	-5312	106	163	46743	
Minnesota	3601	540	196	3	4	32582	1.2	-91	-345	60	128	32770	
Mississippi	2288	482	-91	8	3	16224	1.5	359	-72	89	46	16359	
Missouri	4372	546	-3231	21	10	25689	1.0	145	-8243	77	79	25845	
Montana	778	-9	73	2	4	6588	1.5	234	279	46	41	6675	
Nebraska	953	200	-450	2	1	4967	0.5	-31	-1605	18	15	5000	
Nevada	2810	301	-581	4	4	22459	1.8	40	-3775	64	108	22631	
New Hampshire	766	-391	-136	0	3	4974	0.8	565	-560	4	15	4993	
New Jersey	16295	-1859	835	13	18	92645	2.4	5953	-7645	195	360	93200	
New Mexico	1160	86	61	17	3	13651	1.8	-147	263	139	77	13867	
New York	20214	4670	-3132	39	44	143394	1.6	3893	-10264	355	601	144350	
North Carolina	3883	248	97	6	27	27377	0.7	115	-7354	93	317	27787	
North Dakota	475	31	-162	15	1	4242	1.0	-58	436	149	2	4393	
Ohio	7578	1508	-2276	11	42	57502	1.1	-1264	-1487	105	318	57925	
Oklahoma	1807	-96	214	6	21	24650	1.6	11	1160	54	135	24839	
Oregon	3494	-1230	-530	15	13	27481	1.6	-57	-1970	179	169	27829	
Pennsylvania	17566	-1147	-793	68	48	136373	2.4	3855	-2056	484	428	137285	
Puerto Rico	1775	-6	-1183	1	3	28099	3.2	239	-3101	79	170	28348	
Rhode Island	1628	-695	-594	3	1	9363	2.0	1499	-16	14	20	9397	
South Carolina	3486	937	488	4	19	16848	0.9	586	733	44	131	17023	
South Dakota	202	-18	39	6	1	1435	0.4	-10	-65	228	8	1671	
Tennessee	3721	698	-363	1	5	22959	0.8	-1210	-5460	60	257	23276	
Texas	16540	-641	454	92	207	190291	1.7	-763	10042	418	2338	193047	
Utah	1166	123	4	11	1	9195	0.7	-115	-938	106	26	9327	
Vermont	739	110	272	3	0	4087	1.4	15	202	18	5	4110	
Virgin Islands	35	-6	-14	0	0	628	1.7	34	-114	4	8	640	
Virginia	3029	-423	-791	9	12	27421	0.8	-1561	820	234	406	28061	
Washington	6196	-115	108	24	59	42784	1.4	151	410	140	784	43708	
West Virginia	1019	109	-32	0	5	15410	2.3	-1029	596	36	48	15494	
Wisconsin	5653	-140	-2398	8	11	34348	1.2	-309	-8382	58	53	34459	
Wyoming	376	-63	66	1	3	6615	2.4	51	1559	21	30	6666	
Totals	267437	3991	-36148	794	1116	2044616	1.5	35749	-93737	7419	13350	2065385	

Figures Appearing In columns showing Over-The-Week Changes reflect all revisions in data for prior week submitted by State agencies.

1. The Unemployment Compensation program for Federal Employees (UCFE) and the Unemployment Compensation for Ex-servicemembers (UCX) exclude claims filed jointly under other programs to avoid duplication.
2. Rate is not seasonally adjusted. The source of US total covered employment is BLS.

UNADJUSTED INITIAL CLAIMS FOR WEEK ENDED JULY 2, 2016

STATES WITH AN INCREASE OF MORE THAN 1,000

State	Change	State Supplied Comment
KY	+5,386	No comment.
NY	+4,670	Layoffs in the transportation and warehousing, educational service, and health care and social assistance industries.
OH	+1,508	Layoffs in the transportation and warehousing, and manufacturing industries.
IL	+1,423	Layoffs in the construction, administrative, support, waste management and remediation service, wholesale trade, and retail trade industries.

STATES WITH A DECREASE OF MORE THAN 1,000

State	Change	State Supplied Comment
CA	-3,819	Fewer layoffs in the service industry.
NJ	-1,859	Fewer layoffs in the educational service, transportation and warehousing, accommodation and food service, and public administration industries.
CT	-1,694	Fewer layoffs in the educational service industry.
MD	-1,307	No comment.
OR	-1,230	No comment.
PA	-1,147	Fewer layoffs in the transportation and warehousing, accommodation and food service, health care and social assistance, and manufacturing industries.

TECHNICAL NOTES

This news release presents the weekly unemployment insurance (UI) claims reported by each state's unemployment insurance program offices. These claims may be used for monitoring workload volume, assessing state program operations and for assessing labor market conditions. States initially report claims directly taken by the state liable for the benefit payments, regardless of where the claimant who filed the claim resided. These are the basis for the advance initial claims and continued claims reported each week. These data come from ETA 538, Advance Weekly Initial and Continued Claims Report. The following week initial claims and continued claims are revised based on a second reporting by states that reflect the claimants by state of residence. These data come from the ETA 539, Weekly Claims and Extended Benefits Trigger Data Report.

A. Initial Claims

An initial claim is a claim filed by an unemployed individual after a separation from an employer. The claimant requests a determination of basic eligibility for the UI program. When an initial claim is filed with a state, certain programmatic activities take place and these result in activity counts including the count of initial claims. The count of U.S. initial claims for unemployment insurance is a leading economic indicator because it is an indication of emerging labor market conditions in the country. However, these are weekly administrative data which are difficult to seasonally adjust, making the series subject to some volatility.

B. Continued Weeks Claimed

A person who has already filed an initial claim and who has experienced a week of unemployment then files a continued claim to claim benefits for that week of unemployment. Continued claims are also referred to as insured unemployment. The count of U.S. continued weeks claimed is also a good indicator of labor market conditions. Continued claims reflect the current number of insured unemployed workers filing for UI benefits in the nation. While continued claims are not a leading indicator (they roughly coincide with economic cycles at their peaks and lag at cycle troughs), they provide confirming evidence of the direction of the U.S. economy.

C. Seasonal Adjustments and Annual Revisions

Over the course of a year, the weekly changes in the levels of initial claims and continued claims undergo regularly occurring fluctuations. These fluctuations may result from seasonal changes in weather, major holidays, the opening and closing of schools, or other similar events. Because these seasonal events follow a more or less regular pattern each year, their influence on the level of a series can be tempered by adjusting for regular seasonal variation. These adjustments make trend and cycle developments easier to spot. At the beginning of each calendar year, the Bureau of Labor Statistics provides the Employment and Training Administration (ETA) with a set of seasonal factors to apply to the unadjusted data during that year. Concurrent with the implementation and release of the new seasonal factors, ETA incorporates revisions to the UI claims historical series caused by updates to the unadjusted data.

[Weekly Claims Archives](#)

[Weekly Claims Data](#)

U.S. Department of Labor news materials are accessible at <http://www.dol.gov>. The Department's [Reasonable Accommodation Resource Center](#) converts Departmental information and documents into alternative formats, which include Braille and large print. For alternative format requests, please contact the Department at (202) 693-7828 (voice) or (800) 877-8339 (federal relay).

U.S. Department of Labor
Employment and Training Administration
Washington, D.C. 20210
Release Number: USDL 16-1470-NAT

Program Contacts:
Brenda Loya (202) 693-3760
Tony Sznoluch (202) 693-3176
Media Contact: (202) 693-4676